



Santa Cruz County Regional Transportation Commission

AGENDA

**Thursday, April 7, 2016
9:00 a.m.**

**NOTE LOCATION THIS MONTH
County Board of Supervisors Chambers
701 Ocean St., 5th floor
Santa Cruz, CA**

NOTE

See the last page for details about access for people with disabilities and meeting broadcasts.

En Español

Para información sobre servicios de traducción al español, diríjase a la última página.

AGENDAS ONLINE

To receive email notification when the RTC meeting agenda packet is posted on our website, please call (831) 460-3200 or email info@sccrtc.org to subscribe.

COMMISSION MEMBERSHIP

| | |
|--|------------------|
| Caltrans (ex-officio) | Tim Gubbins |
| City of Capitola | Dennis Norton |
| City of Santa Cruz | Don Lane |
| City of Scotts Valley | Randy Johnson |
| City of Watsonville | Jimmy Dutra |
| County of Santa Cruz | Greg Caput |
| County of Santa Cruz | Ryan Coonerty |
| County of Santa Cruz | Zach Friend |
| County of Santa Cruz | John Leopold |
| County of Santa Cruz | Bruce McPherson |
| Santa Cruz Metropolitan Transit District | Karina Cervantez |
| Santa Cruz Metropolitan Transit District | Cynthia Chase |
| Santa Cruz Metropolitan Transit District | Ed Bottorff |

The majority of the Commission constitutes a quorum for the transaction of business.

1. Roll call
2. Review of items to be discussed in closed session

CLOSED SESSION

3. Conference with Real Property Negotiator Pursuant to Government Code 54956.8 for lease of property on the Santa Cruz Branch Rail Line.

Property: Santa Cruz Branch Rail Line

Agency Negotiator: George Dondero, Executive Director and Luis Mendez, Deputy Director

Negotiating Parties: RTC and Golden Gate Railroad Museum

Under Negotiation: Price and Terms

OPEN SESSION

4. Report on closed session
5. Oral communications

Any member of the public may address the Commission for a period not to exceed three minutes on any item within the jurisdiction of the Commission that is not already on the agenda. The Commission will listen to all communication, but in compliance with State law, may not take action on items that are not on the agenda.

Speakers are requested to sign the sign-in sheet so that their names can be accurately recorded in the minutes of the meeting.

6. Additions or deletions to consent and regular agendas

CONSENT AGENDA

All items appearing on the consent agenda are considered to be minor or non-controversial and will be acted upon in one motion if no member of the RTC or public wishes an item be removed and discussed on the regular agenda. Members of the Commission may raise questions, seek clarification or add directions to Consent Agenda items without removing the item from the Consent Agenda as long as no other Commissioner objects to the change.

MINUTES

7. Approve draft minutes of the March 3, 2016 Regional Transportation Commission meeting

8. Accept draft minutes of the March 9, 2016 Safe on 17/TOS Task Force meeting

POLICY ITEMS

No consent items

PROJECTS and PLANNING ITEMS

9. Approve Caltrans grant funded contract authorization for the Sustainable Transportation Prioritization Plan **(Resolution)**

BUDGET AND EXPENDITURES ITEMS

10. Accept status report on Transportation Development Act (TDA) revenues
11. Accept Fiscal Year (FY)15-16 SCCRTC Semi-Annual Internal Financial Statements

ADMINISTRATION ITEMS

12. Approve CalPERS Employer Paid Member Contributions Change **(Resolution)**
13. Approve the Bicycle Advisory Committee membership appointments

INFORMATION/OTHER ITEMS

14. Accept monthly meeting schedule
15. Accept correspondence log
16. Accept letters from RTC committees and staff to other agencies
 - a. Letter to the Santa Cruz Metropolitan Transit District regarding an invitation to attend the Elderly and Disabled Transportation Advisory Committee May 10, 2016 special meeting to discuss Santa Cruz Metro's service reduction, from the Elderly and Disabled Transportation Advisory Committee
 - b. Letter to Senator William Monning, Assemblymember Luis Alejo, and Assemblymember Mark Stone regarding the Strategic Growth Council's Affordable Housing and Sustainable Communities Program, from RTC Staff
17. Accept miscellaneous written comments from the public on RTC projects and transportation issues

18. Accept information items - *none*

REGULAR AGENDA

19. Commissioner reports – oral reports
20. Director’s Report – oral report
(*George Dondero, Executive Director*)
21. Caltrans report and consider action items
 - a. District Director’s report
 - b. Santa Cruz County project updates
22. City of Watsonville Rail Trail project update
(*Cory Caletti, Senior Transportation Planner*)
 - a. Staff report
 - b. Presentation – Murray Fontes, Principle Engineer, City of Watsonville
23. Elderly and Disabled Transportation Advisory Committee’s - Committee Report 2012-2015
(*Grace Blakeslee, Transportation Planner*)
 - a. Staff report
 - b. Elderly and Disabled Transportation Advisory Committee - 2012-2015 Report
24. User Oriented Transit Planning Project
(*Grace Blakeslee, Transportation Planner*)
 - a. Staff report
 - b. Resolution authorizing the Executive Director to enter into a contract for consultant services and approve an agreement with the Santa Cruz Metropolitan Transit District (METRO) to support development of the User Oriented Transit Planning Project
25. Highway 1 Corridor Environmental Document – Status Report
(*Kim Shultz, Senior Transportation Planner*)
 - a. Staff report
26. Review of items to be discussed in closed session

CLOSED SESSION

27. CONFERENCE WITH LEGAL COUNSEL-EXISTING LITIGATION. (Paragraph (1) of subdivision (d) of Section 54956.9 of the Government Code) Santa Cruz Superior Court Case No. CV182123
28. CONFERENCE WITH LEGAL COUNSEL-ANTICIPATED LITIGATION. Significant exposure to litigation pursuant to paragraph (2) of subdivision (d) of Section 54956.9 of the Government code: one case

OPEN SESSION

29. Report on closed session
30. Next meetings

The next RTC meeting is scheduled for Thursday, May 5, 2016 at 9:00 a.m. at the Capitola City Council Chambers, 420 Capitola Avenue, Capitola, CA.

The next Transportation Policy Workshop meeting is scheduled for Thursday, April 21, 2016 at 9:00 a.m. at the RTC Offices, 1523 Pacific Avenue, Santa Cruz, CA.

HOW TO REACH US

Santa Cruz County Regional Transportation Commission
1523 Pacific Avenue, Santa Cruz, CA 95060
phone: (831) 460-3200 / fax: (831) 460-3215

Watsonville Office
275 Main Street, Suite 450, Watsonville. CA 95076
phone: (831) 460-3205
email: info@sccrtc.org / website: www.sccrtc.org

COMMENTS FROM THE PUBLIC

Written comments for items on this agenda that are received at the RTC office in Santa Cruz by noon on the day before this meeting will be distributed to Commissioners at the meeting.

HOW TO STAY INFORMED ABOUT RTC MEETINGS, AGENDAS & NEWS

Broadcasts: Many of the meetings are broadcast live. Meetings are cablecast by Community Television of Santa Cruz. Community TV's channels and schedule can be found online (www.communitytv.org) or by calling (831) 425-8848.

Agenda packets: Complete agenda packets are available at the RTC office, on the RTC website (www.sccrtc.org), and at the following public libraries:

- Aptos Library
- Boulder Creek Library
- Branciforte Library
- Capitola Library
- Felton Library
- Garfield Park Library
- La Selva Beach Library
- Live Oak Library

- Santa Cruz Downtown Library
- Scotts Valley Library

- Watsonville Main Library

For information regarding library locations and hours, please check online at www.santacruzpl.org or www.watsonville.lib.ca.us.

On-line viewing: The SCCRTC encourages the reduction of paper waste and therefore makes meeting materials available online. Those receiving paper agendas may sign up to receive email notification when complete agenda packet materials are posted to our website by sending a request to info@sccrtc.org. Agendas are typically posted 5 days prior to each meeting.

Newsletters: To sign up for E-News updates on specific SCCRTC projects, go to www.sccrtc.org/enews.

HOW TO REQUEST

ACCOMMODATIONS FOR PEOPLE WITH DISABILITIES

The Santa Cruz County Regional Transportation Commission does not discriminate on the basis of disability and no person shall, by reason of a disability, be denied the benefits of its services, programs, or activities. This meeting location is an accessible facility. If you wish to attend this meeting and require special assistance in order to participate, please contact RTC staff at 460-3200 (CRS 800/735-2929) at least three working days in advance of this meeting to make arrangements. People with disabilities may request a copy of the agenda in an alternative format. As a courtesy to those person affected, Please attend the meeting smoke and scent-free.

SERVICIOS DE TRADUCCIÓN/ TRANSLATION SERVICES

Si gusta estar presente o participar en esta junta de la Comisión Regional de Transporte del Condado de Santa Cruz y necesita información o servicios de traducción al español por favor llame por lo menos con tres días laborables de anticipo al (831) 460-3200 para hacer los arreglos necesarios. (Spanish language translation is available on an as needed basis.) Please make advance arrangements (at least three days in advance) by calling (831) 460-3200.

TITLE VI NOTICE TO BENEFICIARIES

The RTC operates its programs and services without regard to race, color and national origin in accordance with Title VI of the Civil Rights Act. Any person believing to have been aggrieved by the RTC under Title VI may file a complaint with RTC by contacting the RTC at (831) 460-3212 or 1523 Pacific Avenue, Santa Cruz, CA 95060 or online at www.sccrtc.org. A complaint may also be filed directly with the Federal Transit Administration to the Office of Civil Rights, Attention: Title VI Program Coordinator, East Building, 5th Floor-TCR, 1200 New Jersey Ave., SE, Washington, DC 20590.

AVISO SOBRE EL TITULO VI A BENEFICIARIOS

La RTC conduce sus programas y otorga sus servicios sin considerar raza, color u origen nacional de acuerdo al Titulo VI del Acta Sobre los Derechos Civiles. Cualquier persona que cree haber sido ofendida por la RTC bajo el Titulo VI puede entregar queja con la RTC comunicándose al (831) 460-3212 o 1523 Pacific Avenue, Santa Cruz, CA 95060 o en línea al www.sccrtc.org. También se puede quejar directamente con la Administración Federal de Transporte en la Oficina de Derechos Civiles, Atención: Coordinador del Programa Titulo VI, East Building, 5th Floor-TCR, 1200 New Jersey Avenue, SE, Washington, DC 20590.



Santa Cruz County Regional Transportation Commission

MINUTES

**Thursday, March 3, 2016
9:00 a.m.**

**County Board of Supervisors Chambers
701 Ocean Street, 5th floor
Santa Cruz, CA**

1. Roll call

The meeting was called to order at: 9:02 a.m.

Members present:

| | |
|--------------------------|-----------------|
| Don Lane | Zach Friend |
| John Leopold | Greg Caput |
| Ryan Coonerty | Bruce McPherson |
| Cynthia Chase | Jimmy Dutra |
| Randy Johnson | Ed Bottorff |
| Karina Cervantez | Dennis Norton |
| Tim Gubbins (ex-officio) | |

Staff present:

| | |
|----------------|--------------------|
| George Dondero | Luis Mendez |
| Yesenia Parra | Jennifer Rodriguez |
| Ginger Dykaar | Cory Caletti |

2. Oral communications

Jack Nelson, Campaign for Sensible Transportation (CFST), said CFST would like to present an agenda item, regarding concerns with widening the highway and sustainable transportation options, at a future Commission meeting. Mr. Nelson also stated that according to what is being published in the news, we are noticeably living in an era of environmental consequences.

3. Additions or deletions to consent and regular agendas

Additional pages for Item 22 were distributed.

CONSENT AGENDA

Commissioner Leopold moved and Commissioner Coonerty seconded the consent agenda. The motion passed unanimously with Commissioners Lane, Friend, Caput, Coonerty, Leopold, McPherson, Norton, Bottorff, Dutra, Cervantez, Chase, and Johnson voting "aye".

Commissioner Friend thanked Art Thomae for painting the last mural on the railroad bridge abutment in Aptos and for setting the stage to have murals painted along the Santa Cruz Branch Rail Line.

MINUTES

4. Approved draft minutes of the February 4, 2016 Regional Transportation Commission meeting
5. Accepted draft minutes of the February 8, 2016 Bicycle Advisory Committee meeting
6. Accepted draft minutes of the February 9, 2016 Elderly and Disabled Transportation Advisory Committee meeting
7. Approved draft minutes of the February 18, 2016 Transportation Policy Workshop meeting
8. Accepted draft minutes of the February 18, 2016 Budget and Administration/ Personnel Committee meeting
9. Accepted draft minutes of the February 18, 2016 Interagency Transportation Advisory Committee meeting

POLICY ITEMS

10. Approved covenant to restrict use of Santa Cruz Branch Rail Line at one location in Watsonville

PROJECTS and PLANNING ITEMS

11. Approved mural for railroad bridge abutment in Aptos

BUDGET AND EXPENDITURES ITEMS

12. Accepted status report on Transportation Development Act (TDA) revenues

13. Approved amendments to the Fiscal Year (FY) 2015-16 Budget and Work Program **(Resolution 11-16)**
14. Approved City of Santa Cruz Article 8 Transportation Development Act allocation request **(Resolution 12-16)**

ADMINISTRATION ITEMS

No consent items

INFORMATION/OTHER ITEMS

15. Accepted monthly meeting schedule
16. Accepted correspondence log
17. Accepted letters from RTC committees and staff to other agencies
 - a. Letter to Caltrans District 5 regarding outstanding items related to Highway 1 rumble strips, from the RTC Bicycle Advisory Committee
 - b. Letter to the California Transportation Commission regarding the revised Santa Cruz County 2016 State Transportation Improvement Plan (STIP) proposal, from RTC staff
 - c. Letter to Senator William Monning, Assemblymember Luis Alejo, and Assemblymember Mark Stone regarding the transportation funding crisis and legislative action needed, from the RTC Chair
18. Accepted miscellaneous written comments from the public on RTC projects and transportation issues
19. Accepted information items
 - a. News Advisory from the California Transportation Commission (CTC) "State Body Slashes Transportation Funding"
 - b. **Article from NPR "Like Millennials, More Older Americans Steering Away From Driving" by David Schaper**
 - c. **Article from AAA News Room "Pothole Damage Costs U.S. Drivers \$3 Billion Annually" by Erin Stepp**
 - d. **News Release from the RTC "State Slashing Transportation Funding"**
 - e. **Article from the Sacramento Bee "AM Alert: California set to lower gas tax by 2.2 cents" by Alexei Koseff**

REGULAR AGENDA

20. Commissioner reports – oral reports

Commissioner Caput thanked Caltrans for their work on various projects in Watsonville and said he would welcome a presentation by the Campaign for Sensible Transportation (CFST) at a future RTC meeting.

21. Appointment of Commissioners to Budget and Administration/Personnel Committee – oral report

Chair Lane recommended the reappointment of Commissioners Friend, Caput, Coonerty, Leopold, and McPherson to the Budget and Administration/Personnel Committee. Commissioners Lane, Friend, Caput, Coonerty, Leopold, McPherson, Norton, Bottorff, Dutra, Cervantez, Chase, and Johnson concurred with the reappointments.

22. **Director's** report – oral report

George Dondero, Executive Director, reported on: the RTC continuing to sub-lease the Watsonville office until further notice; attending the annual Central Coast Coalition Legislative Day on March 9th in Sacramento with Commissioners Lane and Friend to advance the cause regarding the current funding crisis for transportation; and **the RTC's involvement in various** outreach activities, including the Santa Cruz Business Fair on March 16th at Coconut Grove. Mr. Dondero included fact sheets and charts, provided by the California State Association of Counties (CSAC), about transportation projects impacted by the recent reduction in state and federal funding, and also noted which counties passed a resolution **to support CSAC's efforts** to address these issues.

Commissioners discussed: the CSAC doing a tremendous job putting together a list of facts that are understandable, and proposals that address the current crisis our transportation system is in; the importance of supporting AB 1591 by Assembly Member Jim Frazier and SBX1-1 by Senator Jim Beall to address the need for increased funding for transportation improvements; and the state of California's surplus being earmarked and building up a reserve.

23. Caltrans report and consider action items

Tim Gubbins, Caltrans District 5 Director, reported that phase 1 of the Highway 1/17 interchange project is almost finished and phase 2 will be starting on the southbound median soon, as the rain permits. Mr. Gubbins noted that included in the packet is the semi-annual State Highway Operation and Protection Program (SHOPP) updates, and a map of Caltrans projects in the Watsonville area.

Commissioners discussed: the status of the Scott Creek bridge project; and their appreciation to Caltrans for their work on the interchange at 152 and Holohan in Watsonville, the lowered speed limits around Scotts Valley, and the safety improvements done on the fishhook project.

24. Fiscal Year (FY) 2016-17 proposed budget

Luis Mendez, Deputy Director, presented his staff report. Mr. Mendez noted the impact of transportation financial challenges with the cut in State Transportation Improvement Program (STIP) funding.

Commissioners discussed: the B&AP Committee's **process** for evaluating and monitoring project progress and achievements; having staff provide a detailed report on the outcome of the Cruz511 and rideshare programs as an agenda item at an upcoming meeting; the importance of supporting a ballot measure that would enable Santa Cruz County to have its own source of funding for transportation projects; the Commission's support to address environmental and sustainable transportation issues; the loss in State Transportation Assistance (STA) funding impacting the transit district; the importance of utilizing the allocated funds for cleanup along the rail line; and multi-year projects carrying over to the next fiscal years.

Commissioner Leopold moved and Commissioner Coonerty seconded the Budget and Administration/Personnel Committee and staff recommendation to adopt **(Resolution 13-16)**, approving the FY 2016-17 RTC budget. The motion passed with Commissioners Lane, Friend, Leopold, Caput, McPherson, Coonerty, Cervantez, Chase, Bottorff, Norton, and Dutra **voting "aye" and Commissioners Johnson voting "no"**.

25. 2040 Regional Transportation Plan (RTP) – draft goals, policies and targets

Ginger Dykaar, Transportation Planner, presented her staff report. Ms. Dykaar noted that the 2040 RTP contains minor updates to the goals, policies, and targets from the earlier 2014 RTP, with the most significant update to the plan being a reduction to the greenhouse gas emissions target. The long-range plan will be used to prioritize projects and identify funding within three main elements: policy, financial, and action. A complete project list of the transportation needs for Santa Cruz County will be brought to the Commission in June 2016 for input and approval.

Commissioners discussed: proposing a target goal of zero for traffic fatalities and looking at different concepts for preventing loss of life; performance monitoring, updates, and the frequency of reports on the progress of the RTP targets; resource constraints, budgeting accordingly, and correlating the budget for RTC projects to achieve the goals set in the RTP; having ambitious goals and setting thresholds higher for reducing green house gases; clarifying

the language in the RTP to be more inclusive when discussing components in the **County's per capita fuel consumption and alternative methods for reducing** green house gas emissions; the Commission having flexibility in meeting targets and addressing changing targets as things progress; and the different goals, targets, and policies addressing improvements of infrastructure to reduce traffic congestion.

Heather Adamson, Association of Monterey Bay Area Governments (AMBAG), stated that AMBAG has been holding off on bringing a revised target for greenhouse gas reduction to the board because new targets are coming from the state later this year. Ms. Adamson noted that the greenhouse gas target in the RTP under 1B-I is only related to land use changes.

Jack Nelson, said that we need to send a cultural signal to the County by being clear about sustainability goals and not be contradictory with projects and plans for reducing greenhouse gases.

Mark Abadi, Romero Institute, said that instead of waiting on instruction from the state, Santa Cruz County should set its own targets for reducing greenhouse gases and set in motion a domino effect for ambitious pursuits in being 100% renewable.

Commissioner Friend moved the staff recommendation with an amendment to modify the RTP to add a footnote to target 1B-I regarding land use decisions and to target 1B-II regarding other emerging technologies. Commissioner Leopold seconded the motion of the staff recommendation to approve the 2040 Regional Transportation Plan draft goals, policies, and targets as modified by the amendment by Commissioner Friend. The motion passed unanimously with Commissioners Lane, Friend, Caput, Coonerty, Leopold, McPherson, Norton, Bottorff, Dutra, Cervantez, Chase, and Johnson voting "aye".

26. Review of items to be discussed in closed session

CLOSED SESSION

27. CONFERENCE WITH LEGAL COUNSEL-EXISTING LITIGATION. (Paragraph (1) of subdivision (d) of Section 54956.9 of the Government Code) Santa Cruz Superior Court Case No. CV182123
28. CONFERENCE WITH LEGAL COUNSEL-ANTICIPATED LITIGATION. Significant exposure to litigation pursuant to paragraph (2) of subdivision (d) of Section 54956.9 of the Government code: one case

OPEN SESSION

29. Report on closed session – *No report*

30. Next meetings

The next RTC meeting is scheduled for Thursday, April 7, 2016 at 9:00 a.m. at the County Board of Supervisors Chambers, 701 Ocean Street, 5th floor, Santa Cruz, CA.

The next Transportation Policy Workshop meeting is scheduled for Thursday, March 17, 2016 at 9:00 a.m. at the RTC Offices, 1523 Pacific Avenue, Santa Cruz, CA.

The meeting adjourned at: 10:41 a.m.

Respectfully submitted,

Jennifer Rodriguez, Staff

Attendees:

Jack Nelson

Heather Adamson

Angela Aitken

Jordan Main

S. Marinshaw

Kirk Ance

Mike De Pala

Mark Adabi

Art Thomae

Eric Child

Carl Arnett

Paul Elerick

Jussie Arias

Eduardo Montecino

Campaign for Sensible Transportation

Association of Monterey Bay Area Governments

Santa Cruz Metro

Granite Construction

Community Bridges

Community Bridges

University of Santa Cruz

Romero Institute



JOINT MEETING OF
SANTA CRUZ COUNTY TRAFFIC OPERATIONS SYSTEMS (TOS) OVERSIGHT
COMMITTEE
AND
SAFE ON 17 TASK FORCE

DRAFT MINUTES

Wednesday, March 9, 2016
10:00am-12:00pm

**San Jose California Highway Patrol
2020 Junction Ave, San Jose**

Meeting Participants

Lt Scot Loetscher, San Jose CHP
Lt Ian Troxell, Santa Cruz CHP
Jennifer Wilson, Caltrans D5
Devin Porr, Caltrans D5
Jeff Bates, Redwood Estates Services Association
Farokh Parsijani, Caltrans D4
William Tyson, Office of Senator Beall
Angelica Torres, Office of Senator Beall
Stephanie Stuehler, Santa Clara County Fire Dept
Engine 84, Santa Clara County Fire Dept
Kieran Kelly, Office of Santa Clara County Supervisor Ken Yeager
Officer Grant Boles, Santa Cruz CHP
Officer Trista Drake, Santa Cruz CHP
Cliff Barber, American Civil Constructors
Angela Gile, Office of Assembly Member Mark Stone
Elaine Daniels, Redwood Estates Services Association
Kelly McClendon, Caltrans D5 Planning
Ray Kwan, Caltrans D4 Maintenance
Tom Barnett, Caltrans D5 Maintenance
Ramin Bolourchian, Caltrans D4 TMC
Brian Winterhalder, Santa Clara County Fire Department
Janet Wohlgemuth, California Conservation Corps
Jesse Morris, CalFire
Patty Ciesla, Santa Clara County FireSAFE Council
Gary Richards, San Jose Mercury News, (teleconference)
Rosemary Anderson, Office of Emergency Services, Santa Cruz County
(teleconference)
Luis Duazo, Caltrans D5 (teleconference)
Jacques van Zeventer, Caltrans D5 (teleconference)
Doug Hessing, Caltrans D5 (teleconference)
Ginger Dykaar, Santa Cruz County Regional Transportation Commission



1. **Introductions** – Introductions were made.
2. **Additions or Deletions to the Agenda** –added oral communications item for public to present information on topics not on agenda
3. **Oral Communications** - Cliff Barber, a member of the Hwy 17 community spoke about his concerns on the number of collisions on Hwy 17. He works for American Civil Constructors, and was involved in installing the high friction surface treatment (HFST) on Hwy 17 near Laurel Rd. He suggested implementing more engineering solutions along Hwy 17 particularly HFST.
4. **Reviewed and Accepted Minutes of the September 16, 2015 Joint TOS Oversight Committee and Safe on 17 Meeting**
5. **Received Information Items** - Ginger Dykaar presented the Freeway Service Patrol (FSP) Program Update. For FY 15/16, the allocation from Caltrans (CT) for Santa Cruz County (SCC) FSP is approximately \$33,000 less than previous years due primarily to a change in the way congestion is determined for Santa Cruz County. The allocation for FY16/17 will likely be a similar reduction. RTC has typically provided a match to the CT funds of 40 to 50% when only 25% is required but the amount of matching funds will likely be reduced as well given the reduction in gas prices and effects on available transportation funds for FSP. All of these reductions in funding add up to the need to reduce FSP hours on both Hwy 1 and 17. Caltrans will be installing 3 traffic volume detectors on Hwy 17 to measure congestion which should increase our funds from CT for FSP in the future.

Articles/Public Feedback –Ginger Dykaar discussed an article about the public outreach that CT has been doing for the Hwy 17 Access Mgmt Plan. There are some quotes from the public about the challenges with not being able to take a left turn onto Hwy 17. An article written by Gary Richards responding to questions from hwy 17 motorists concerned about dangerous driving on hwy 17 was discussed. An article about a mountain lion that was hit by a car on Hwy 17 near Lexington Reservoir was mentioned. The Land Trust spoke to the group at the September meeting about their interest in building a wildlife tunnel under Hwy 17 for habitat connectivity for mountain lions and other animals. They have been partnering with Caltrans on this project and continue to make progress towards this project becoming a reality.

6. **Received Update on California Highway Patrol Safe on 17 Program Statistics and Public Information Efforts** - Lt Scot Loetscher with San Jose CHP stated that there were no fatalities in 2015 on the Hwy 17 corridor. The number of injury collisions was higher than previous years. With improvements in the economy, the traffic volume is increasing which correlates to increases in



the number of collisions. The total number of extra enforcement hours on Hwy 17 by San Jose CHP was less than last year.

Officer Trista Drake from Santa Cruz CHP stated that having no fatalities on the Hwy 17 corridor is a significant achievement. The extent of injury for the 2015 collisions has not been analyzed and may show that many of the injuries were minor relative to previous years. The collisions may have also been solo vehicle collisions affecting less people. Officer Drake stressed that the number of citations does not fully reflect the work of CHP. The amount of CHP contact with the public that motivates motorists to obey the traffic rules is a better measurement. The number of January 2016 collisions are likely due to the stormy, wet weather.

Ginger Dykaar stated that the total number of injury and fatal collisions for 2015 is the highest since 1999, when the Office of Traffic Safety Grant was initiated. Similarly the total number of all collisions is the highest since 2005. This increase could be related to an increase in traffic on Highway 17. Only data that is currently available for assessing traffic trends is from CT traffic operations who estimate the traffic volumes on state highways. Data from Caltrans traffic count detectors on Hwy 17 once installed will provide a way to assess traffic trends. The number of extra enforcement hours was down in 2015 compared to other years and the number of total citations also decreased. CHP enforcement is extremely valuable for reducing the number of collisions. Optimizing your efforts by focusing your enforcement schedule (both regular and extra) to target times with higher collision rates is extremely important.

7. Received information on Santa Cruz County's New Emergency

Operations Center - Rosemary Anderson from the Office of Emergency Services, SCC introduced herself. Santa Cruz County has opened a new Emergency Operations Center on Chanticleer Avenue in mid-county. She has just recently started working for the county in this position. Once she has time to settle into her new position, she will come back to a future TOS meeting to discuss emergency operations for SCC.

8. Highway 17 Hazardous Fuel Reduction Project in Vicinity of Redwood Estates

- Patty Ciesla from Santa Clara County FireSafe Council discussed a proposed project to reduce wildfire risk along Hwy 17 near Redwood Estates. The excessive amounts of dead and diseased vegetation along the highway are a fire hazard. Vehicle fires could ignite roadside vegetation then move into residential areas. A wildfire originating outside the highway right of way (ROW) could blow across the highway trapping people in vehicles on a congested roadway. Santa Clara County FireSafe Council is partnering with Caltrans, Cal Fire, Santa Clara County Fire Dept and others to fund this project in order to remove vegetation along the



Highway 17 ROW and nearby Redwood Estates residential areas to reduce the risk of a wildfire along Hwy 17. If grant is awarded, work will start this summer.

9. Received Caltrans District 5 Highway 17 Project Update

Kelly McClendon discussed the Hwy 17 Access Management Study to improve mobility, access, safety and reduce conflict points along the Hwy 17 corridor in SCC. A website was launched in mid-November including an interactive mapping activity to promote public input on the project. To reach Hwy 17 users beyond the adjacent neighborhoods, a survey was used and input from public at the Santa Cruz farmer's market was solicited. Concerns expressed were a lack of convenient and accessible crossings and that more and more people are traveling fast through local road network to avoid Hwy 17 congestion. Public has expressed a desire for a truck ban, but truckers expressed importance of keeping Hwy 17 open to trucks. A Caltrans study has found that Hwy 17 is the most viable trucking route connecting the Bay area to Santa Cruz County.

Jennifer Wilson from CT D5 discussed the Hwy 17 Shoulder Widening and Concrete Guardrail project near Scotts Valley. The project runs from 0.4 miles south of Sugarloaf to 0.1 mile south of Laurel Rd. The project is planned to be completed by Fall 2016. Caltrans has also been working on a project to extend the merge lane from Hwy 1NB to Hwy 17 SB. This project is anticipated to be completed by Spring 2016. D5 maintenance will be paving sections of Hwy 17 at night mostly in SB direction.

10. Received Caltrans District 4 Highway 17 Project Update

Farokh Parsijani from Caltrans D4, presented the project update for Santa Clara County side of Hwy 17. On Hwy 17 near the City of Los Gatos, a project is planned for 2019/2020 to construct a safety light, shoulder rumble stripes, a guardrail system, dynamic speed warning signs, and enhanced wet-night visibility striping at targeted locations. Another project north of Hebard to I-280 is planned for 2019/2020 that includes cold planning and overlaying, guard rail and crash cushion upgrades, loop detector replacement, pavement delineation, drainage and dike improvement.

11. Received Traffic Operations Systems Updates

Traffic Management Center (TMC) Update - Ramin Bolourchian stated that if anyone sees any problems with the changeable message signs (CMSs), to please contact the TMC.

Jacques van Zeventer discussed the information in the packet on the traffic detectors on Hwy 1 that are and are not operational. He will check with his staff and let us know what detectors will be kept maintained. Ginger Dykaar stressed



the importance for having this traffic data and requested that if the detectors will not be kept operational, to consider removing from PeMs.

Caltrans will be installing 3 traffic detectors to Hwy 17. A traffic detector has already been added at Laurel Curve but has not yet been reporting to PeMs and two more detectors will be added – one north and one south of Laurel Curve.

12. Received Major Incident Review – none

13. Received Additional Items - none

14. Approved Next Meeting Date

Joint Safe on 17 Task Force & TOS Oversight Committee Meeting – Wednesday, September 14, 2014 10:00 to 12:00 at Santa Cruz County Regional Transportation Commission, 1523 Pacific Ave, Santa Cruz, CA 95060.

Respectively submitted by


Ginger Dykaar

Agenda: April 7, 2016

To: Santa Cruz County Regional Transportation Commission

From: Karena Pushnik, Senior Transportation Planner

Re: Caltrans Grant-Funded Contract Authorization for the Sustainable Transportation Prioritization Plan

RECOMMENDATION

Staff recommends that the Regional Transportation Commission (RTC) approve the attached resolution ([Attachment 1](#)) authorizing the Executive Director to enter into agreements and execute amendments to fund and implement the Caltrans grant-funded Sustainable Transportation Prioritization Plan.

BACKGROUND

The 2014 long range Regional Transportation Plan, adopted in June 2014, highlighted the **region's extensive transportation needs and** severe transportation funding deficiencies. In October 2014 the RTC submitted an application for a Caltrans Sustainable Transportation grant titled the Sustainable Transportation Prioritization Plan to engage the community using innovative, technologically advanced and effective techniques to stimulate a collective vision, establish common ground, and support deeper understanding and engagement in making transportation and land use decisions.

In April 2015 Caltrans notified the RTC that the proposed project was awarded \$229,735, with a local match of \$29,765 bringing the project total to \$259,500. Although administered by Caltrans, the source of funding for this grant is the federal Section 5304 program.

Goals for these funds mirror the state and federal transportation planning goals including: improve multimodal mobility and access for all people; preserve and efficiently utilize the multimodal transportation system; support a vibrant economy; improve public safety and security; foster livable and healthy communities; promote social equity; and practice environmental stewardship.

The RTC submitted a final scope of work and project timeline to Caltrans and in December 2015 Caltrans issued a Notice to Proceed, in addition to an amendment in the Overall Work Program Agreement to include the project.

DISCUSSION

Goals for this project include finding ways to optimize use of the existing street system through enhanced bicycle, pedestrian and transit amenities; use of the existing railroad corridor for a bicycle/pedestrian path and expanded transportation uses, reduction of pollution and personal spending on transportation thereby increasing the amount that can be reinvested into the local economy; and expansion of save mobility options for all members of the community. To understand more about current trends, RTC staff undertook research about the many community engagement and visualization

techniques available. In February 2016 the RTC issued two Requests for Proposals:

- Community Engagement Component – includes identifying key community interest representing the range of diverse geographic and demographic sectors, identifying meaningful engagement strategies, developing messages and graphics, conducting meetings/focus groups/charettes, providing presentations, employing visualizations, and participating in the development of the draft and final reports, and an engagement toolkit.
- Visualization Component – production of images that will function as interactive **scenario exploration tools to tell 'digital stories' based on potential future** transportation infrastructure choices, land uses, and energy and climate change (greenhouse gas reduction) strategies.

A review team consisting of representatives from RTC, UCSC and professional facilitation firm Emergent Systems reviewed the 5 proposals and conducted interviews. Based on the proposals, references and interviews, two firms were selected to receive the contracts.

MIG – Founded in 1982, MIG has over 30 years as a national leader with experience in design, infrastructure, engagement, Complete Streets, innovative visualization, and demonstrated results. Additionally, their team is augmented by local resident Matthew Thompson of Thacher & Thompson Architects, providing in-depth local knowledge. The MIG team will execute the engagement component and part of the visualization component for a total not to exceed \$90,000.

Owlized – Specializing in unique public outreach tools to provide 360-degree photorealistic visualizations including a mobile web application accessible on smart phones. The Owlized team will execute part of the visualization component for a total not to exceed \$40,000.

Attached are scopes of work for both MIG ([Attachment 2](#)) and Owlized ([Attachment 3](#)).

Staff recommends that the RTC approve resolutions authorizing the Executive Director to enter into agreements, and execute amendments as necessary, with MIG and Owlized to provide services to implement the Caltrans grant-funded Sustainable Transportation Prioritization Plan.

SUMMARY

The RTC received a competitively awarded Caltrans grant to conduct a Sustainable Transportation Prioritization Plan utilizing community engagement and visualization techniques. Following review of proposals, interviews and review of referrals, the review team selected MIG and Owlized to assist with implementation. By these resolutions, the RTC Executive Director will be authorized to enter into agreements and amendments.

- Attachments:**
1. Resolution authorizing RTC Director to execute contracts with MIG & Owlized
 2. Scopes of Work for MIG – Engagement and Visualization
 3. Scope of Work for Owlized - Visualization

S:\RTC\TC2016\TC0416\CONSENT GENDA\SUSTAINABLETRANSPCTGRANT\SR_SUSTAINABLETRANSTENGVIZ_CONTRACTS.DOCX

RESOLUTION NO.

Adopted by the Santa Cruz County Regional Transportation Commission
on the date of April 7, 2016
on the motion of Commissioner
duly seconded by Commissioner

A RESOLUTION AUTHORIZING THE EXECUTIVE DIRECTOR TO ENTER INTO AGREEMENTS
FOR IMPLEMENTATION OF THE CALTRANS GRANT-FUNDED SUSTAINABLE
TRANSPORTATION PRIORITIZATION PLAN

WHEREAS, the 2014 Regional Transportation Plan, identified immense transportation needs and severe transportation funding shortfalls; and,

WHEREAS, the RTC received a competitively awarded Caltrans grant to implement a Sustainable Transportation Prioritization Plan to engage the community to find common ground about transportation project and funding priorities;

WHEREAS, requests for proposals (RFP) were solicited for engagement and visualization services and a review team selected the most qualified consultant teams based on proposals, references, staff and interviews;

WHEREAS, the \$229,735 in grant funding from the grant will cover the consultant services and a portion of staff time;

THEREFORE, BE IT RESOLVED BY THE SANTA CRUZ COUNTY REGIONAL TRANSPORTATION COMMISSION THAT:

1. The Executive Director, or his designee, is authorized to enter into agreements with consulting firms MIG and Owlized, and other partners as needed, to implement the engagement and visualization components of the Sustainable Transportation Prioritization Plan project;
2. The Executive Director, or his designee, is authorized to enter into amendments to agreements or contracts as needed, as long as they are consistent with other RTC actions or approved budgets.

AYES: COMMISSIONERS

NOES: COMMISSIONERS

ABSTAIN: COMMISSIONERS

ABSENT: COMMISSIONERS

Don Lane, Chair

ATTEST:

George Dondero, Secretary

Distribution: RTC Fiscal
RTC Project Manager
MIG
Owlized

Sustainable Transportation Prioritization Plan

Scope of Work – Engagement Component



TASK 1: PROJECT COORDINATION AND KICK-OFF MEETING

Task 1.1—Convene Kick-off Meeting

The MIG Team will meet with RTC staff and Owlized to kick-off the project to review expectations, confirm roles and responsibilities. MIG and staff will also confirm the schedule, work products, review process and communications protocols.

DELIVERABLE

Meeting notes, final work plan and project schedule

Task 1.2—Project Coordination

The MIG Project Manager will communicate regularly with the project partners to ensure that expectations are being met and the project is staying on time and within budget. The MIG Team will recommend that a standing bi-weekly call be established to ensure key staff are available.

DELIVERABLE

Regular emails summarizing the key action items and agreements

TASK 2: DEVELOP PUBLIC ENGAGEMENT PLAN

Task 2.1—Identify Community Groups and Leaders

Relying on contacts provided by the RTC, MIG will develop a list of key stakeholders, opinion leaders and interested parties. These individuals represent agencies, organizations and constituencies whose input will provide critical direction to the RTC. We also anticipate that they will help leverage the RTC's outreach efforts and assist with sharing information and publicizing community outreach activities. MIG will continue to help RTC update this list throughout the project.

DELIVERABLE

List of stakeholders, opinion leaders and interested parties.

Task 2.2—Provide Input on Study Areas

The MIG Team will work with the project team to identify criteria that can be used to select 3-5 study areas. The criteria will reference the sustainability goals, potential for mobility improvements and other factors that help support and rationalize the selections.

DELIVERABLE

List of criteria and 3-5 sites that best fit them

Task 2.3—Identify Community Engagement Strategies

MIG will produce a community engagement plan (CEP) that identifies the outreach goals, methods (including visualization techniques), target audiences, strategies for reaching "hard to reach community members," key messages (from Task 2.4), schedule and performance metrics. The plan will be specific and implementable. We will draw on RTC's established communication channels, partner agency channels, local media and other communications tools. MIG monitors outreach results and participation throughout its processes and will make adjustments as needed to ensure that we have reached a broad cross-section of the community.

MIG will use input collected through task 3.1 to refine the draft CEP and provide input on 2.3.

DELIVERABLE

Draft and final Community Engagement Plan

Task 2.4—Develop Messages and Graphics

MIG will develop a consistent “look and feel” for the project that includes RTC’s logo and provides a standard template for the outreach materials. MIG will also develop key messages and related imagery that helps communicate the value and benefits of reduced VMT. The messages and images can serve as a stand-alone piece or be parceled out so the individual messages can be distributed through RTC channels such as social media and others. The key messages and suggested graphics will also be referenced in the CEP.

DELIVERABLE

Set of key messages and related graphics/imagery that can be used in outreach and community engagement activities as described in the CEP

TASK 3: CONDUCT PUBLIC ENGAGEMENT AND DOCUMENT RESULTS

Task 3.1—Hold Stakeholder, Charrette and/or Focus Group Meetings

Referencing the contacts identified Task 2.1, MIG will conduct individual interviews and focus groups to identify key issues and priorities, surface potential strategies and test messages for communicating results. MIG will interview 6-8 individuals to gain initial community insights and get their feedback on elements of the CEP.

MIG will also conduct up to four (4) focus groups that will help ensure the process receives input from hard to reach populations including senior, disabled, limited English proficient and other transit dependent-populations. The focus groups will have 10-12 participants and be about 90 min. in length. Participants will receive an incentive for participation. MIG will work with community organizations to recruit participants. MIG will work with RTC to determine an appropriate incentive which may include cash, gift card or transit pass. The focus groups will be interactive and designed to collect information about participant responsiveness to sustainability messages and to get their input on priorities.

The insights gained through the interviews and focus groups will help inform and finalize the CEP and refine community engagement activities.

Note: Charrettes will be addressed in Task 3.3

DELIVERABLE

Memorandum summarizing the individual interviews and focus group results

Task 3.2—Provide Presentations to Community Groups

We will create an outreach toolkit that allows the MIG Team, RTC staff, Project Partners and others to provide a similar consistent presentation to groups throughout the community. The outreach tool kit includes a user guide and provides information about the project, promotes upcoming outreach activities, and includes a short activity that allows participants to provide input on the spot. MIG will conduct a training session to demonstrate how the tool can be used and how the collection of the input received can be systematized. We also track participation to ensure that we are reaching a broad audience. MIG can also translate the materials into Spanish so that bilingual members of the Project Team can share information and collect feedback in Spanish. We will conduct at least four (4) presentations to various community groups as identified in the CEP. The CEP will also include a schedule and assignments for meeting with additional groups.



DELIVERABLE

Outreach tool kit, user guide, toolkit training session and at least 4 community presentations.

Task 3.3—Assist with Visualization Exercises and Pop-Up Events in Public Locations

MIG will conduct an interactive community charrette where we provide visualizations that help introduce certain concepts.



MIG will also conduct three (3) “pop-up events” where the visualization activity is converted into a format that can be conducted at existing community events. The pop-up would include information about the planning process, visualizations and related graphics/imagery, and an interactive exhibit that solicits feedback from community members. Outreach activities will also help publicize the Owlized viewfinders when they are available for use.

The outreach and visualization teams will combine resources to deliver these work products.

DELIVERABLE

Interactive community-wide charrette and 3 related “pop-up activities.” MIG will provide a written summary of the key findings and priorities that are identified at these meetings

Task 3.4—Employ Other Identified Engagement Strategies

All MIG outreach activities are described in the CEP. MIG will assist with publicizing the usage of the Owlized platform in its CEP identified activities.

TASK 4: CONTRIBUTE TO DRAFT, FINAL REPORT AND TOOLKIT

Task 4.1—Provide Materials for the Draft Public Engagement Report

MIG will analyze and compile the results of its outreach efforts. The report will document the approach and methodologies, key themes, issues and concerns, community preferences and priorities, and related imagery and visualizations. Where possible, MIG will quantify participation and feedback. The findings will be presented in a way that can be used by decision makers to support and inform short and long-term transportation planning projects.

DELIVERABLE

Draft Public Engagement Report

Task 4.2—Provide Input for the Tool Kit and Final Report

The MIG Team will describe and adapt the materials used to create the visualization engagement materials into a toolkit for use by other entities. The toolkit will highlight best practices, identify success factors and identify the major steps needed to transfer this technique to other communities.

The information will also be incorporated into the project Final Report.

DELIVERABLE

Tool Kit and Final Report

TASK 5: ADMINISTRATION

Task 5.1—Reports and Invoicing

The MIG Project Manager will prepare monthly progress reports and provide a brief progress report. MIG will provide supporting documentation as needed by RTC.

Task 5.2—Final Request for Funding/Grant Close-out

MIG will provide the final deliverables, related files and financial documentation needed to close-out the project and fulfill the final grant requirements.





Scope of Work – Visualization Component

TASK 1: PROJECT COORDINATION AND KICK-OFF MEETING

Task 1.1—Convene Kick-off Meeting

The MIG Team will meet with RTC staff and Owlize to kick-off the project to review expectations, confirm roles and responsibilities. MIG and staff will also confirm the schedule, work products, review process and communications protocols.

DELIVERABLE

Meeting notes, final work plan and project schedule

Task 1.2—Project Coordination

The MIG Project Manager will communicate regularly with the project partners to ensure that expectations are being met and the project is staying on time and within budget. The MIG Team will recommend that a standing bi-weekly call be established to ensure key staff are available. MIG may conduct meetings or calls directly with Owlize to coordinate responsibilities and work products.

DELIVERABLE

Regular emails summarizing the key action items and agreements

TASK 2: DEVELOP PUBLIC ENGAGEMENT PLAN

Task 2.1—Identify Community Groups and Leaders

In consultation with the project team, community leaders and others, MIG draw on existing stakeholder identification work done by SCCRTC and develop a list of key stakeholders, opinion leaders and interested parties. In this task, MIG will focus on identifying stakeholders with property located within the areas of possible visualizations so their interests are represented appropriately. We expect these individuals represent agencies, organizations and constituencies whose input will provide critical direction to the RTC. MIG will continue to add to this list throughout the project.

This task includes input and coordination on the activities in Task 2 in the Outreach RFP Scope of Work including outreach contacts and messaging.

DELIVERABLES

List of stakeholders, opinion leaders and interested parties.

Task 2.2—Provide Input on Study Areas

The MIG Team will work with the project team to identify criteria that can be used to select 3-5 study areas that will be the focus for developing project visualizations. The criteria will reference the sustainability goals, potential for mobility improvements and other factors that help support and rationalize the selections. The goal will be to ensure each study area represents a variety of different programming characteristics so the eventual visualization package fully articulates proposed changes along different corridors. This includes an initial assessment of the project area with study area recommendations provided from MIG. We will then hold a conference call with staff to review/confirm the different study areas. Following confirmation, MIG will take a series of base photographs for each study area during mid-morning hours (e.g., best light) that will be used as the starting point for all visualizations. MIG will also reference photos taken by the Owlized team to ensure our efforts are in alignment. MIG will coordinate with Owlize on the locations and perspectives of the photos to ensure they meet the project objectives and outreach needs.

DELIVERABLE

List of criteria and 3-5 sites that best fit the criteria and base imagery of each study area (JPEG)

Task 2.3—Develop Visualizations

MIG will develop a series of 2D and 3D visualization tools that will be used to articulate different design and sustainability concepts. Utilizing the base imagery for each study area taken during the previous task, MIG will create a progression of changes/improvements that includes roadway lane changes, bicycle enhancements, pedestrian and streetscape improvements, landscaping improvements and (if necessary) prototypical buildings and other development. This task may include the following visualizations depending on how these formats can be integrated with the Owlized platform:

- **Photosims:** MIG will prepare 3D photo simulations (photosims) for each of the study areas. The photosims will show realistic scenarios for future changes. They will be developed as a series of progressions that show existing conditions, small “tactical changes” and final full changes. This will allow the community to understand the progression of development/investment that can occur along the corridor.
- **Street Sections:** MIG will prepare before and after prototypical street sections for each study area. These will be 2D diagrams that show technical changes to roadway widths and building heights/setbacks (as appropriate).
- **Plan View Diagrams:** MIG will prepare before and after plan view diagrams for each study area. They will be 2D diagrams that show proposed changes to roadway alignments and land uses on an aerial base. Plan View diagrams are important for showing accurate dimension information, and in coordination with the photosims and street sections, will fully articulate planning and design concepts. We assume that RTC staff will provide high resolution aerial imagery MIG can use as a base image for these diagram.

Combined, these visualization tools will allow MIG and staff to fully articulate conceptual land use changes, transportation infrastructure enhancements, and urban design principles expressed in the Monterey Bay Area Complete Streets Guidebook, Sustainable Communities Strategy, Regional Transportation Plan and other appropriate sources.

In addition to the visualizations, MIG will also use existing County images, publically-available online images and MIG’s extensive in-house library of prototypical imagery to show real-world examples of different planning and mobility concepts. MIG will also test the draft visualizations with small groups to ensure they properly convey technical data and are easy to understand.

Throughout the process, MIG will coordinate with Owlized to ensure the format, scale and other features of the visualizations are compatible and adaptable with the Owlized platform.

DELIVERABLES

Photosims, Street Sections and Plan View Diagrams for each of the study areas (JPEG/PDF)



TASK 3: CONDUCT PUBLIC ENGAGEMENT AND DOCUMENT RESULTS

Task 3.1—Visualization Exercises and Pop-Up Events in Public Locations

MIG will conduct an interactive community charrette where we provide visualizations that help introduce certain concepts.

To extend the reach of the charrette, MIG will adapt the materials to be used at 3 “pop-up events throughout the County. MIG will also promote and direct participants to the Owlize viewers as part of these activities.

MIG will prepare a series of highly-visual posters that include the visualizations prepared in earlier tasks that can be used at different community pop-up workshops and intercept events. The posters will include a consistent project brand and theme, and will show proposed changes for each study area (e.g., one poster will be developed per study area). The posters will also be designed in such a way so that can be shown digitally on iPads and/or projected on to walls so the community can pace through the simulations in real time during events.

DELIVERABLES

Poster and JPEG Graphics showing the various simulations (5 hard copies/JPEG/PDF), Interactive planning charrette and 3 pop-up events

Task 3.4—Employ Other Identified Engagement Strategies

All MIG outreach activities are described in the Community Engagement Plan (CEP) prepared in Task 2.3 of the Engagement RFP Scope. Throughout the project, MIG will monitor participation in activities and track outreach results. In coordination with the RTC, MIG will identify potential adjustments needed to reach target audiences that are being successfully reached. Hours allocated to this task will be used to support the public education and data gathering achieved by the Owlize platform.

TASK 4: CONTRIBUTE TO DRAFT, FINAL REPORT AND TOOLKIT

Task 4.1—Provide Materials for the Draft Public Engagement Report

MIG will analyze and compile the results of its outreach efforts. The report will document the approach and methodologies. Key themes, issues and concerns, community preferences and priorities. Where possible, MIG will quantify participation and feedback. The findings will be presented in a way that can be used by decision makers to support and inform short and long-term transportation planning projects.

DELIVERABLE

Draft Public Engagement Report

Task 4.2—Provide Input for the Tool Kit and Final Report

The MIG Team will describe and adapt the materials used to create the visualization engagement materials into a toolkit for use by other entities. The toolkit will highlight best practices, identify success factors and identify the major steps needed to transfer this technique to other communities.

The information will also be incorporated into the project Final Report.

DELIVERABLE

Tool Kit and Final report (shared work product with the Engagement Scope)

TASK 5: ADMINISTRATION

Task 5.1—Reports and Invoicing

The MIG Project Manager will prepare monthly progress reports and provide a brief progress report. MIG will provide supporting documentation as needed by RTC.

Task 5.2—Final Request for Funding/Grant Close-out

MIG will provide the final deliverables, related files and financial documentation needed to close-out the project and fulfill the final grant requirements.





Sustainable Transportation Prioritization Plan Visualization Component/Tool Kit - Work Plan

Task 1: Project Initiation and Coordination

Activity: Owlized will send a project manager to attend the kick-off meeting and review expectations, coordination and confirm Owlized's role and responsibilities for the project. The project manager will review and refine project objectives, work plan, and schedule, as per "Attachment A: Scope of Work." Project Manager will also, throughout the duration of the project, communicate regularly with project partners, including weekly updates, to ensure tasks progress smoothly and are executed upon according to the schedule and budget. Project manager will resolve any issues that may rise in a timely manner.

Task 2: Develop Public Engagement Plan and Tools

Activity: Owlized project manager will work with SCCRTC staff to review constituents and stakeholders identified by engagement consultants and develop a "storyboard" for OWL devices targeted to that audience. The storyboard provides the creative and editorial direction for the OWL "user experience" (UX) will include a) visualizations, b) narrative text, c) narrative audio and d) a survey, and will be developed to reinforce the need for sustainable and multimodal transportation choices, per the Scope of Work.

Visualizations

Visualizations will be site-specific depictions of current and future conditions. To produce each visualization, Owlized project manager will visit site and shoot a series of still images which will be photo-stitched into a 360-degree sphere. That spherical image will serve as a) the "current" condition and b) the backplate upon which future conditions will be composited. Future conditions will be modeled in 3D using any combination of Autodesk software including AutoCAD, 3D Studio Max, Navisworks, Revit, Civil 3D, and Infraworks, as well as Rhino and SketchUp. Owlized will require project partners to provide source material for any project designs. Our visualization staff will then output photorealistic renderings to be included in OWL and Mobile OWL app.

Narrative Text

Owlized project manager will draft narrative text that appears as an overlay on top of visualization pages in OWL and Mobile OWL app. Each visualization will have accompanying narrative text.

Narrative Audio

Narrative audio will be scripted to match narrative text, above, and will be voiced by Owlized staff or, at the request of SCCRTC, a third party voice actor.

Survey

Project partners may select up to five survey questions. Each question and respective response options must be provided to Owlized by engagement consultants. Owlized project manager will provide best practices and editorial direction based on prior experience.

Prior to developing the aforementioned UX, project manager will work closely with SCCRTC and engagement consultants to identify three (3) to five (5) study areas designated as high-potential locations for improved transportation and land use applications that advance sustainability goals and targets in the RFP. The specific locations determined will significantly influence the aforementioned story components, particularly the visualizations.

Once locations and UX storyboard are determined, Owlized project manager will work with visualization staff to develop visualization content for OWL VR kiosks and Mobile OWL app. This process will yield up to **four (4)** renderings to be deployed in OWL kiosks and/or mobile OWL apps on any combination of projects, as directed by SCCRTC. Graphic tools will be identified at this time, and may include a) 360-degree renderings (aka “panos”) which depict project design alternatives and can be displayed in the OWL devices as well as on smartphones via the Mobile OWL app, and b) high resolution still images generated from the same source model as the 360-degree renderings.

Project design alternatives will include scenarios of land use changes, transportation infrastructure options, and application of known urban design principles expressed in the *Monterey Bay Area Complete Streets Guidebook, Sustainable Communities Strategy and Regional Transportation Plan*, as per the Scope Work.

Project design alternatives may include “before” and “after” visualizations which enable the user to vividly compare and understand the difference between present and future conditions. When placed inside OWL devices, these visualizations will be synced to the immediate surrounding physical environment so as to provide the user a truly *in situ* experience.

Visualizations will depict recognizable local corridors that incorporate *complete streets, walkable communities, safe bicycling amenities and transit integration*.

Whenever possible, visualization production will leverage existing material, be it in the form of 2D CAD drawings, 3D design files, hand drawn sketches, or any other material provided to Owlized by SCCRTC. Draft visualizations will be presented to SCCRTC first, and then in small groups, at their discretion, before broader dissemination through OWLs and/or the Mobile OWL app.

Task 3: Conduct Public Engagement and Document Results

Activity: After successful completion of OWL and Mobile OWL app content, including all visualizations and narrative text and audio, Owlized can support engagement consultants by offering the Mobile OWL app at pop-up or temporary public events in order to engage community members and expand public understanding of sustainable transportation and land use concepts, design, and benefits, as per Scope of Work requirements.

Both OWL and Mobile OWL app will be configured to include a survey tool which will gather valuable public input on the options presents therein. Survey questions will be determined by engagement consultants and SCCRTC.

Survey responses will be collected in realtime and streamed to a cloud-based dashboard for SCCRTC to monitor, as well as to a master spreadsheet, which will be delivered at the end of each public input period. The master spreadsheet will include a variety of data fields beyond just survey results, including time of use and length of use, and will enable deeper statistical analysis through cross-tabulation. Owlized can also further deploy OWL and Mobile OWL technology beyond pop-up events, in a strategic manner determined by engagement consultants, but any such arrangement must be agreed to separately and is not included in this scope of work.

Task 4: Contribute to Draft, Final Report and Toolkit

Activity: Throughout project duration, Owlized will document successes and public engagement lessons learned in order to synthesize into a Final Public Engagement Report. Success factors Owlized will report include but are not limited to:

- Number of total users, per project, per outreach modality (OWL and Mobile OWL app)
- Number of users who answered one survey question
- Number of users who completed all survey questions
- Charts and graphics illustrating user responses by question
- Average duration of time spent by each user, per project, per outreach modality

Owlized project manager will also provide feedback for the development of a draft investment prioritization plan, as per Scope of Work requirements, and will solicit review by Caltrans, project partners and stakeholders. Owlized project manager will also, in addition to aforementioned success factors and public engagement lessons, provide a succinct set of materials documenting how other entities may replicate the visualization engagement modalities provided by Owlized to SCCRTC. Such documentation will include but not be limited to:

- Instructions for outputting "panos" from industry-standard 3D design software
- Best practices for developing a project's "story", including a) site selection, b) visual composition, c) design alternatives selection, d) narrative text and audio, e) survey questions and f) deployment scheduling.

Finally, Owlized project manager will provide feedback based on community input in order to develop a transportation system priority plan to address sustainable community, state and federal goals, as per Scope of Work requirements.

Task 5: Administration

Activity: Throughout the project duration, Owlized project manager will monitor progress and deliver weekly reports to project partners. Invoicing will be submitted monthly and all expenditures and use of funds will be properly documented.

Upon completion and adoption of the final plan, a final invoice will be generated to facilitate grant closeout.

S:\Outreach\Viz\Contractors\OWL\OWL Visualization Proposal_Scope_2016Mar24.docx

Schedule and Milestones

| Tasks | Task Name | Deliverable | Duration |
|----------------|---|---|------------|
| Task 1 | Project Initiation and Coordination | Presentation of scope for OWL visualizations and software | 4 weeks |
| Task 1.1 | | Convene Kick-Off Meeting | |
| Task 1.2 | | Project Coordination | |
| Task 2 | Develop Public Engagement Plan and Tools | Develop project plan, Completed OWL renderings & visualizations, Configure OWL app | 12 Weeks |
| Task 2.1 | | Review key community groups, messages and graphics | 4 weeks |
| Task 2.2 | | Select Study Areas | 4 weeks |
| Task 2.3 | | Develop visualizations | 4 weeks |
| Task 3a | Conduct Public Engagement and Document Results | Deploy Two (2) OWLs and One (1) Mobile OWL in Location #1 and gather survey results | 8 weeks |
| Task 3.1a | | Visualization Exercises and Pop-Up events in public locations | |
| Task 3.2a | | Employ other Identified Engagement Strategies | |
| Task 3b | Conduct Public Engagement and Document Results | Deploy Two (2) OWLs and One (1) Mobile OWL in Location #2 and gather survey results | 8 weeks |
| Task 3.1b | | Visualization Exercises and Pop-Up events in public locations | |
| Task 3.2b | | Employ other Identified Engagement Strategies | |
| Task 3c | Conduct Public Engagement and Document Results | Deploy One (1) Mobile OWL in Location #3 and gather survey results | 8 weeks |
| Task 3.1c | | Visualization Exercises and Pop-Up events in public locations | |
| Task 3.2c | | Employ other Identified Engagement Strategies | |
| Task 3d | Conduct Public Engagement and Document Results | Deploy One (1) Mobile OWL in Location #4 and gather survey results | 8 weeks |
| Task 3.1d | | Visualization Exercises and Pop-Up events in public locations | |
| Task 3.2d | | Employ other Identified Engagement Strategies | |
| Task 4 | Contribute to Draft, Final Report and Toolkit | Document successes and public engagement lessons learned in order to synthesize into a Final Public Engagement Report | 4 weeks |
| Task 4.1 | | Provide Materials for the Draft Public Engagement Report | |
| Task 4.2 | | Provide input for the Toolkit and Final Report | |
| Task 4.3 | | Final Report including Sustainable Transportation Priority Plan | Milestone |
| Task 5 | Administration | Project management, unit setup, ongoing maintenance of OWL units | Concurrent |
| Task 5.1 | | Invoice and progress report packages | |
| Task 5.2 | | Final report, invoice and close out | |

**SANTA CRUZ COUNTY REGIONAL TRANSPORTATION COMMISSION
TDA REVENUE REPORT
FY 2015-2016**

| MONTH | FY14 - 15 ACTUAL REVENUE | FY15 - 16 ESTIMATE REVENUE | FY15 - 16 ACTUAL REVENUE | DIFFERENCE DIFFERENCE | DIFFERENCE AS % OF PROJECTION | CUMULATIVE % OF ACTUAL TO PROJECTION |
|--------------|---|---|---|----------------------------------|--|---|
| JULY | 591,100 | 602,922 | 601,300 | -1,622 | -0.27% | 99.73% |
| AUGUST | 788,200 | 803,964 | 801,800 | -2,164 | -0.27% | 99.73% |
| SEPTEMBER | 791,871 | 807,709 | 872,384 | 64,675 | 8.01% | 102.75% |
| OCTOBER | 616,700 | 629,034 | 617,500 | -11,534 | -1.83% | 101.74% |
| NOVEMBER | 822,300 | 838,746 | 823,300 | -15,446 | -1.84% | 100.92% |
| DECEMBER | 719,449 | 733,838 | 917,127 | 183,289 | 24.98% | 104.92% |
| JANUARY | 601,300 | 580,629 | 631,600 | 50,971 | 8.78% | 105.37% |
| FEBRUARY | 801,800 | 758,764 | 842,100 | 83,336 | 10.98% | 106.11% |
| MARCH | 739,331 | 835,900 | 763,406 | -72,494 | -8.67% | 104.23% |
| APRIL | 524,400 | 524,826 | 0 | | | |
| MAY | 699,200 | 699,732 | 0 | | | |
| JUNE | 853,689 | 812,340 | 0 | | | |
| TOTAL | 8,549,340 | 8,628,404 | 6,870,516 | 279,010 | 3.23% | 80% |

Note:

I:\FISCAL\TDA\MonthlyReceipts\[FY15 - 16.xlsx]FY2016

TO: Regional Transportation Commission
FROM: Daniel Nikuna, Fiscal Officer
RE: FY15-16 SCCRTC Semi-annual Annual Internal Financial Statements

RECOMMENDATIONS

Staff recommends that the Regional Transportation Commission review and accept the FY15-16 Semi-annual Financial Statements.

BACKGROUND

The interim financial statements provide an overview of the financial position of the Regional Transportation Commission (RTC) more frequently than does the annual audit report. The preparation of the semi-annual financial statements is an opportunity to reconcile prior year estimates and actual results realized in the current year.

DISCUSSION

The RTC currently has 12 funds, equally divided between Governmental (Operating) and Trust Funds types. Three Trust Funds – In Lieu of Social Security, PERS-Health, and Miscellaneous Deductions were set up to accumulate payroll funds transferred from the **“General Fund” pending final disbursement.** Of the three funds, only the PERS-Health remains significant; the other two funds are either inactive (In Lieu of Social Security) or increasingly less important as third party payments are increasingly being made electronically through the payroll account at Santa Cruz County Bank. The In Lieu of Social Security Fund will be closed by year end as funds will revert to the General Fund. The remaining trust funds (TDA, STA, and STP Exchange) are used to pass through funds to local jurisdictions.

In the detail sections of the financial report, actual revenues and expenditures are compared to the budget. The financial highlights are included in the transmittal. The statements are intended for internal use; however, they are available for review by the general public.

SUMMARY

The FY15-16 semi-annual internal financial statements have been completed and staff recommends review and acceptance by the Commission.

Attachment:

FY15-16 SCCRTC annual Semi-annual Internal Financial Statements

SANTA CRUZ COUNTY REGIONAL TRANSPORTATION COMMISSION
(SCCRTC)

FINANCIAL REPORTS

FY2015-2016

Period Ending December 31, 2015
(6 Months)

Table of Contents

| | | |
|--|--|-------|
| I. SUMMARY | | 1 |
| A. Combined Balance Sheet..... | | 2 |
| B. Combined Statement of Revenues, Expenditures and Change in Fund Balance..... | | 3 |
| II. GOVERNMENTAL (OPERATING) FUNDS | | 4 |
| 1. ADMINISTRATION, PLANNING, AND RIDESHARE | | 5 |
| A. Combined Balance Sheet..... | | 6 |
| B. Combined Revenues, Expenditures and Change in Fund Balance..... | | 7 |
| C. Revenues and Expenditures Detail | | 8 |
| 1. SCCRTC – Payroll..... | | 9 |
| 2. Rideshare..... | | 10 |
| 3. SCCRTC - General Operations | | 11-12 |
| 4. Rural Planning (State Subvention) | | 13-14 |
| 2. SERVICE AUTHORITY FOR FREEWAY EMERGENCIES (SAFE) FUND | | 15-16 |
| 3. FREEWAY SERVICE PATROL (FSP) FUND..... | | 17-18 |
| 4. RAIL/TRAIL AUTHORITY FUND | | 19-20 |
| 5. HIGHWAY 1 PA/ED FUND..... | | 21 |
| 6. HIGHWAY 1 AUX LANES CONSTRUCTION FUND..... | | 22-23 |
| III. TRUST/FIDUCIARY FUNDS | | 24-25 |
| 1. TRANSPORTATION DEVELOPMENT ACT (TDA) FUND | | 26-27 |
| 2. SURFACE TRANSPORTATION PROGRAM (STP) EXCHANGE | | 29-30 |
| 3. STATE TRANSIT ASSISTANCE FUND (STA)..... | | 29-30 |
| 4. OTHER TRUST FUNDS | | 29-30 |

March 28, 2016

To the Commissioners
Santa Cruz County Regional
Transportation Commission

Santa Cruz, California

Staff is pleased to present the FY 15-16 semi-annual internal financial statements of the Regional Transportation Commission (RTC). The following are the major highlights:

1. At mid-year, 54% of the projected TDA revenues have been realized; and the receipts for six months to December 31, 2015 are \$217,198 (4.9%) above budget. The revenues were \$72,494 (8.7%) off for the month of March, but the year to date receipts/revenues (\$6,591,340) are 4.2% higher than estimated. The STA revenues (page 27) are lower than expected due to lower fuel tax caused by decreased prices; and the allocation formula change by the State Controller. 100% of the STA revenue and the bulk of the TDA are paid to Santa Cruz Metro.
2. There are no new fixed assets. The value of the rail line is carried at the purchase price (\$14,200,000), but an adjustment is made in the audited financial statements for the bridge construction/rehabilitation costs.
3. The total payroll (\$1,111,284) is 46% of the budget (page 7).
4. The RTC General Fund continues to maintain \$532,305 in restricted reserves, which can only be spent by Board action. The restricted funds and the unspent advances previously received, which are reflected in the Deferred Revenues, help the General Fund maintain a good cash balance. Cash is high in the STP Exchange and TDA Funds due to unclaimed allocations by local jurisdictions.
5. The accounts receivables are mostly offset by the accounts payable; all funds show adequate liquidity to meet current liabilities.
6. FY2016 is the first year the RTC did not receive any FHWA Planning funds from AMBAG.
7. The Due From and Due To Other Funds for \$182,341 each represent largely the payroll costs (\$173,419) paid by the General Fund on behalf of other funds, which will be repaid after the statement date.
8. There were no inter-fund transfers in the first six months.

The major projects underway include the Highway 1 HOV PA/ED and the Monterey Bay Sanctuary Scenic Trail (MBSST). The financial statements are on accrual basis and reflect all costs of goods and services received through December 31, 2015 regardless when the bills were actually paid.

Overall, the financial statements show the RTC in a sound financial shape.

Sincerely,



Daniel Nikuna, Fiscal Officer

SUMMARY

SANTA CRUZ COUNTY REGIONAL TRANSPORTATION COMMISSION
 COMBINED BALANCE SHEET
 FY 2015-2016
 AS OF 12-31-2015

| | SPECIAL REVENUE (GOVERNMENTAL) FUNDS | | | | | | | | | | TRUST (FIDUCIARY) FUNDS | | | | | |
|---------------------------------------|--------------------------------------|----------------------|-----------------|----------------------------------|----------------|----------------|-------------------|------------------|------------------|---------------|----------------------------|----------------|----------------|-------------------|--|--|
| | ADMIN PLANNING RIDESHARE | RAIL/TRAIL AUTHORITY | HIGHWAY 1 PAVED | HIGHWAY 1 AUX LANES CONSTRUCTION | SAFE | FSP | TOTAL | TDA | STP EXCHANGE | PERS HEALTH | IN LIEU OF SOCIAL SECURITY | MISC DEDUCTION | STA | TOTAL | | |
| ASSETS: | | | | | | | | | | | | | | | | |
| 1 Cash | 728,173 | 425,422 | 346,214 | 265,785 | 547,477 | 52,363 | 2,365,434 | 2,486,769 | 9,622,173 | 30,541 | 9,227 | 6,574 | 29,951 | 12,195,235 | | |
| 2 Accounts Receivable | | 357,838 | | | | | 357,838 | | | | 198 | | | 198 | | |
| 3 Due From Other Funds | 178,321 | 20 | | | 4,000 | | 182,341 | | | | | | | | | |
| 4 Due From Other Agencies | 689,205 | 23,884 | | 36,310 | 35,351 | 85,598 | 870,348 | | | | | | 914,807 | 914,807 | | |
| 5 Fixed Assets | 3,534 | 14,200,000 | | | | | 14,203,534 | | | | | | | | | |
| TOTAL ASSETS | 1,599,233 | 15,007,165 | 346,214 | 302,095 | 586,827 | 137,961 | 17,979,495 | 2,486,769 | 9,622,173 | 30,541 | 9,425 | 6,574 | 944,758 | 13,100,241 | | |
| LIABILITIES & EQUITY: | | | | | | | | | | | | | | | | |
| 9 Accounts Payable | 143,357 | | 197,016 | | 6,940 | 37,205 | 384,519 | 193,533 | 5,733 | | 214 | | | 199,479 | | |
| 10 Due to Other Funds | 20 | 50,520 | 82,890 | 9,551 | 20,135 | 19,225 | 182,341 | | | | | | | | | |
| 11 Due to Other Agencies | 12,625 | 5,750 | | 2,625 | 36,032 | | 57,032 | | | | | | 944,551 | 944,551 | | |
| 12 Deferred Revenues | 153,370 | 560,064 | | 289,918 | | | 1,003,352 | | | | | | | | | |
| 13 Investment in Fixed Assets | 3,534 | 14,200,000 | | | | | 14,203,534 | | | | | | | | | |
| 14 Fund Balance: | | | | | | | | | | | | | | | | |
| 15 Reserved (1) | 532,305 | | | | | | 532,305 | | | | | | | | | |
| 16 Available | 754,022 | 190,832 | 66,309 | | 523,720 | 81,530 | 1,616,413 | 2,293,237 | 9,616,440 | 30,541 | 9,425 | 6,360 | 207 | 11,956,210 | | |
| Fund Balance | 1,286,327 | 190,832 | 66,309 | - | 523,720 | 81,530 | 2,148,718 | 2,293,237 | 9,616,440 | 30,541 | 9,425 | 6,360 | 207 | 11,956,210 | | |
| TOTAL LIABILITIES & EQUITY | 1,599,233 | 15,007,166 | 346,214 | 302,095 | 586,827 | 137,961 | 17,979,496 | 2,486,769 | 9,622,173 | 30,541 | 9,425 | 6,574 | 944,758 | 13,100,241 | | |

-0.0000

\\rsrv2\internal\FIN\AL\FINANCE\Internal Financials\FY2016\Sem1\Annual Financials.xlsx\OtherTrusts\Funds Rev_Exp

SANTA CRUZ COUNTY REGIONAL TRANSPORTATION COMMISSION
 COMBINED REVENUES, EXPENDITURES, AND CHANGE IN FUND BALANCE

FY 2015-2016
 PERIOD ENDING 12-31-2015

| | SPECIAL REVENUE (GOVERNMENTAL) FUNDS | | | | | | | | | | TOTAL | TDA | STP EXCHANGE | PERS HEALTH | IN LIEU OF SOCIAL SECURITY | MISC DEDUCTION | STA | TOTAL | |
|---|--------------------------------------|----------------------|-----------------|-------------------------------|---------|---------|-----------|-----------|--------------|-------------|-------|-------|--------------|-------------|----------------------------|----------------|-----|-------|----------------------------|
| | ADMIN PLANNING RIDESHARE | RAIL/TRAIL AUTHORITY | HIGHWAY 1 PAVED | HIGHWAY 1 AUX LANES CONSTRUCT | SAFE | FSP | TOTAL | TDA | STP EXCHANGE | PERS HEALTH | | | | | | | | | IN LIEU OF SOCIAL SECURITY |
| 1 REVENUES | | | | | | | | | | | | | | | | | | | |
| 2 Interest | 549 | 1,947 | 1,459 | 933 | 1,628 | 142 | 6,658 | 7,576 | 24,606 | - | 28 | - | 206 | 32,416 | | | | | |
| 3 Transportation Development Act (TDA) | 591,480 | | | | | | 591,480 | 4,633,411 | | | | | | 4,633,411 | | | | | |
| 4 State Transit Assistance (STA) | | | | 124,211 | | | 124,211 | | | | | | 914,807 | 914,807 | | | | | |
| 5 Department of Motor Vehicle (DMV) Fee | | | | | | | | | | | | | | | | | | | |
| 6 Caltrans | | | | 54,655 | | | 54,655 | | | | | | | | | | | | |
| 7 CMIA | | | | | | | | | | | | | | | | | | | |
| 8 STP Exchange | | | | | | 135,000 | 135,000 | | | | | | | | | | | | |
| 9 RSTP | 90,208 | | | | | | 90,208 | | | | | | | | | | | | |
| 10 Federal Earmark | 30,721 | | | | | | 30,721 | | | | | | | | | | | | |
| 11 Fed 5304 Partnership Planning (Unified Corridor) | 74,740 | | | | | | 74,740 | | | | | | | | | | | | |
| 12 State Partnership (Passenger Rail Study) | 13,362 | | | | | | 13,362 | | | | | | | | | | | | |
| 13 Rural Planning Assistance Funds | 146,301 | 47,772 | | | | | 146,301 | | | | | | | | | | | | |
| 14 Leases | | | | | | | 47,772 | | | | | | | | | | | | |
| 15 SC County - Unified Corridor | 100,000 | | | | | | 100,000 | | | | | | | | | | | | |
| 16 Land Trust of Santa Cruz | 45,727 | | | 17,040 | | | 45,727 | | | | | | | | | | | | |
| 17 Local Assistance | | | | | | | 17,040 | | | | | | | | | | | | |
| 18 Operating Transfers In | | | | | | | | | | | | | | | | | | | |
| 19 Other Revenues | 12,649 | | | | | | 12,649 | | | | | | | | | | | | |
| 20 TOTAL REVENUES | 1,105,737 | 49,719 | 1,459 | 55,588 | 143,875 | 220,739 | 1,577,118 | 4,640,987 | 24,606 | 183,771 | 28 | 9,361 | 915,013 | 5,773,766 | | | | | |
| 21 | | | | | | | | | | | | | | | | | | | |
| 22 EXPENDITURES | | | | | | | | | | | | | | | | | | | |
| 23 Salaries & Benefits | 827,221 | 66,831 | 115,475 | 23,471 | 53,172 | 24,709 | 1,110,879 | | | | | | | | | | | | |
| 24 Services and Supplies | 155,938 | 84,592 | 280,400 | 38,477 | 63,215 | 4,712 | 627,334 | | | | | | | | | | | | |
| 25 SCCRTC (Transportation Commission) | | | | | | | | 590,675 | 135,000 | | | | 944,551 | 725,675 | | | | | |
| 26 SCMTD (Transit District) | | | | | | | | 3,188,746 | 27 | | | | | 4,133,324 | | | | | |
| 27 Specialized Transit (CTSA/Community Bridges) | | | | | | | | 355,051 | | | | | | 355,051 | | | | | |
| 28 Volunteer Center | | | | | | | | 73,809 | | | | | | 73,809 | | | | | |
| 29 City of Santa Cruz | | | | | | | | 193,533 | | | | | | 193,533 | | | | | |
| 30 Towing | | | | | | | | | | | | | | | | | | | |
| 31 Unified Corridor | 153,839 | | | | | 125,854 | 125,854 | | | | | | | | | | | | |
| 32 Passenger Rail Study | 6,334 | | | | | | 6,334 | | | | | | | | | | | | |
| 33 Bike to Work | 21,951 | | | | | | 21,951 | | | | | | | | | | | | |
| 34 Community Traffic Safety Coalition | 44,709 | | | | | | 44,709 | | | | | | | | | | | | |
| 35 PERS - Health | | | | | | | | | 178,997 | | | | | 178,997 | | | | | |
| 36 Other Expenses | 2,136 | | | | | | 2,136 | | | | | | | 2,136 | | | | | |
| 37 TOTAL EXPENDITURES | 1,212,127 | 151,423 | 395,875 | 61,948 | 116,386 | 155,275 | 2,093,034 | 4,401,813 | 135,027 | 191,747 | - | 9,734 | 944,551 | 5,682,872 | | | | | |
| 38 | | | | | | | | | | | | | | | | | | | |
| 39 EXCESS OF REVENUES OVER EXPENDITURES | (106,390) | (101,704) | (394,415) | (6,360) | 27,489 | 65,464 | (515,916) | 239,174 | (110,421) | (7,977) | 28 | (372) | (29,638) | 90,894 | | | | | |
| 40 Beginning Balance | 1,392,717 | 292,536 | 460,724 | 6,360 | 496,231 | 16,066 | 2,664,634 | 2,054,063 | | 38,518 | 9,397 | 6,732 | 29,744 | 2,138,454 | | | | | |
| 41 Rounding Adjustment | | | | | | | | | | | | | | | | | | | |
| 42 ENDING FUND BALANCE | 1,286,327 | 190,832 | 66,309 | (0) | 523,720 | 81,530 | 2,148,718 | 2,293,237 | (110,421) | 30,541 | 9,425 | 6,360 | 206 | 2,229,348 | | | | | |

GOVERNMENTAL (OPERATING) FUNDS

ADMINISTRATION, PLANNING, AND RIDESHARE
COMBINED BALANCE SHEET
FY 2015-2016
AS OF 12-31-2015

| | FY 2015-2016 |
|--|------------------|
| 1 ASSETS: | |
| 2 Cash - County Account | 689,306 |
| 3 Cash with Santa Cruz Community Bank | 38,367 |
| 4 Petty Cash | 500 |
| 5 Due From Other Funds | 178,321 |
| 6 Due From Other Agencies | 689,205 |
| 7 Fixed Assets (Net) | 3,534 |
| 8 TOTAL ASSETS | 1,599,233 |
| 9 | |
| 10 LIABILITIES & EQUITY: | |
| 11 Accounts Payable | 143,357 |
| 12 Salaries Payable | |
| 13 Due to Other Funds | 20 |
| 14 Due to Other Agencies | 12,625 |
| 15 Deferred Revenues | 153,370 |
| 16 Investment in Fixed Assets | 3,534 |
| 17 Fund Balance: | |
| 18 Reserved (1) | 532,305 |
| 19 Available | 754,022 |
| 20 Fund Balance | 1,286,327 |
| 21 TOTAL LIABILITIES & EQUITY | 1,599,233 |

ADMINISTRATION, PLANNING, AND RIDESHARE
COMBINED REVENUES, EXPENDITURES AND CHANGE IN FUND BALANCE
FY 2015-2016
PERIOD ENDING 12-31-2015

| | FY 2015-2016 ACTUAL | FY 2015-2016 BUDGET | FY 2015-2016 ACTUAL % OF Budget |
|--|------------------------|------------------------|---------------------------------------|
| 1 REVENUES | | | |
| 2 Interest | 549 | | |
| 3 Federal Earmark (FHWA) | 30,721 | 45,526 | 67 |
| 4 Rural Planning Assistance Funds | 146,301 | 337,031 | 43 |
| 5 Fed 5305 Partnership Planning (Unified Corridor) | 74,740 | 74,668 | 100 |
| 6 RSTP Exchange | 0 | 222,554 | - |
| 7 RSTP | 90,208 | 150,000 | 60 |
| 8 Transportation Development Act (TDA) | 591,480 | 1,181,350 | 50 |
| 9 STIP | 0 | 175,000 | - |
| 10 Fed 5304 Transit Planning Grant - Pass Rail | 13,362 | 21,865 | 61 |
| 11 Land Trust of Santa Cruz | 45,727 | 0 | |
| 12 Transit for Sustainable Communities | | 119,995 | - |
| 13 SC County - Unified Corridor | 100,000 | 100,000 | 100 |
| 14 County of Santa Cruz (Unified Corridor) | | 114,868 | - |
| 15 Transfer In | 0 | 50,000 | - |
| 16 Other Revenues | 12,649 | 0 | |
| 17 TOTAL REVENUES | 1,105,737 | 2,592,857 | 43 |
| 18 | | | |
| 19 EXPENDITURES | | | |
| 20 Salaries & Benefits (Planning Services) | 827,221 | 1,789,400 | 46 |
| 21 Services and Supplies | 155,938 | 1,000,554 | 16 |
| 22 Bike to Work | 21,951 | 50,000 | 44 |
| 23 Community Traffic Safety Coalition | 44,709 | 100,000 | 45 |
| 24 Boltage | 0 | 10,280 | - |
| 25 Unified Corridor Investment | 153,839 | 153,860 | 100 |
| 26 Passenger Rail Study | 6,334 | 40,000 | |
| 27 Trail Master Plan Consultant (MBSST) | 0 | 50,000 | - |
| 28 Transfer Out | 0 | 110,000 | - |
| 29 Other Expenses | 2,136 | | |
| 30 TOTAL EXPENDITURES | 1,212,127 | 3,304,094 | 37 |
| 31 | | | |
| 32 EXCESS OF REVENUES OVER EXPENDITURES | (106,390) | (711,237) | |
| 33 Beginning Fund Balance | 1,392,717 | | |
| 34 Adjustment | 0 | | |
| 35 ENDING FUND BALANCE | 1,286,327 | | |

PAYROLL
REVENUES, EXPENDITURES, AND CHANGE IN FUND BALANCE
FY 2015-2016
PERIOD ENDING 12-31-2015

| | FY 2015-2016 ACTUAL | FY 2015-2016 BUDGET | FY 2015-2016 ACTUAL % OF Budget |
|--|--------------------------------|--------------------------------|--|
| 1 REVENUES | | | |
| 2 Other Revenues | 550 | | |
| 3 TOTAL REVENUES | 550 | 0 | 0 |
| 4 | | | |
| 5 EXPENDITURES | | | |
| 6 Regular pay - permanent | 684,754 | 1,575,319 | 43 |
| 7 Overtime | | 5,000 | 0 |
| 8 OASDI - Social Security | 34,481 | 80,175 | 43 |
| 9 PERS - Retirement | 127,340 | 275,164 | 46 |
| 10 Employee Medical Insurance | 252,244 | 403,056 | 63 |
| 11 Unemployment Insurance & Workers Comp | 2,607 | 59,629 | 4 |
| 12 Other Benefits | 9,857 | 32,768 | 30 |
| 13 Temp Workers | | 5,793 | 0 |
| 14 Intrafund Transfer | (1,111,284) | (2,436,904) | 46 |
| 15 Other Expenses | 406 | | |
| 16 TOTAL PAYROLL | 406 | 0 | |
| 17 | | | |
| 18 TEMPORARY CONTRACT SERVICES | | | |
| 19 TOTAL EXPENDITURES | 406 | 0 | 0 |
| 20 | | | |
| 21 EXCESS OF REVENUES OVER EXPENDITURES | 144 | 0 | |

RIDESHARE
REVENUES, EXPENDITURES, AND CHANGE IN FUND BALANCE
FY 2015-2016
PERIOD ENDING 12-31-2015

| | FY 2015-2016 ACTUAL | FY 2015-2016 BUDGET | FY 2015-2016 ACTUAL % OF Budget |
|---|------------------------|------------------------|---------------------------------------|
| 1 REVENUES | | | |
| 2 | | | |
| 3 CMAQ | | | |
| 4 RSTP | 90,208 | 150,000 | 60 |
| 5 RSTPX Exchange | | 149,676 | - |
| 6 Transfer In (From SAFE) | | 50,000 | - |
| 7 Other Revenues | | | |
| 8 TOTAL REVENUES | 90,208 | 349,676 | 26 |
| 9 | | | |
| 10 EXPENDITURES | | | |
| 11 Telephone | | 500 | - |
| 12 Membership | | 600 | - |
| 13 Postage | | 1,000 | - |
| 14 Office Expenses/Supplies | | 2,000 | - |
| 15 Salaries & Benefits | 90,208 | 205,566 | 44 |
| 16 Advertisement & Promotion | | 10,000 | - |
| 17 Travel / Education and Training | | 2,000 | - |
| 18 Technical Support/Programming | | 5,000 | - |
| 19 Park & Ride Lot Project | | 100,000 | - |
| 20 Cruz511 Technical Support | | 10,000 | - |
| 21 TOTAL EXPENDITURES | 90,208 | 336,666 | 27 |
| 22 | | | |
| 23 EXCESS OF REVENUES OVER EXPENDITURES | - | 13,010 | |

TRANSPORTATION COMMISSION OPERATIONS
REVENUES, EXPENDITURES, AND CHANGE IN FUND BALANCE
FY 2015-2016

PERIOD ENDING 12-31-2015

| | FY 2015-2016 ACTUAL | FY 2015-2016 BUDGET | FY 2015-2016 ACTUAL % OF Budget |
|---|--------------------------------|--------------------------------|--|
| 1 REVENUES | | | |
| 2 Interest | 549 | | |
| 3 STP Exchange | | 72,554 | |
| 4 Transportation Development Act (TDA) | 591,480 | 1,181,350 | 50 |
| 5 STIP | | 175,000 | |
| 6 Coastal Conservancy | | 150,000 | |
| 7 FHWA Earmark (wisst) | 30,721 | 45,526 | 67 |
| 8 Sust Transp Planning - Prioritization Plan | | 114,868 | |
| 9 FTA 5304 (Unified Corridor) | 74,740 | 74,668 | 100 |
| 10 Fed 5304 Transit Planning Grant (Passenger Rail Study) | 13,362 | 21,865 | 61 |
| 11 Transit for Sust Comm - User Oriented | | 119,995 | |
| 12 Land Trust of Santa Cruz | 45,727 | 0 | |
| 13 SC County - Unified Corridor | 100,000 | 100,000 | 100 |
| 14 Other Revenues (1) | 12,099 | | |
| 15 TOTAL REVENUES | 868,679 | 2,055,826 | 42 |
| 16 | | | |
| 17 EXPENDITURES | | | |
| 18 Telephone | 817 | 13,000 | 6 |
| 19 Other Insurance (Liability) | 11,789 | 14,000 | 84 |
| 20 Maintenance - Office Equipment | 3,433 | 6,500 | 53 |
| 21 Membership | 3,910 | 15,000 | 26 |
| 22 Sponsorship | 0 | 1,000 | |
| 23 Duplicating Services | 1,529 | 6,000 | 25 |
| 24 Computer Software | 460 | 12,000 | 4 |
| 25 Postage | 580 | 5,500 | 11 |
| 26 Supplies/Office Expense | 6,265 | 30,000 | 21 |
| 27 Accounting and Auditing Fees (County & Payroll Services) | 2,870 | 15,000 | 19 |
| 28 Custodial Services | 2,303 | 7,500 | 31 |
| 29 County Mainframe (Data Processing) | 640 | 6,000 | 11 |
| 30 Director's Fees | 3,700 | 11,000 | 34 |
| 31 Legal Fees | 12,625 | 40,000 | 32 |
| 32 Salaries & Benefits | 591,567 | 1,246,803 | 47 |
| 33 Prof & Special Services | 37,499 | 370,200 | 10 |
| 34 Rents & Leases - Offices | 44,415 | 89,000 | 50 |
| 35 Advertising and Promotion | 469 | 6,000 | 8 |
| 36 Special Expense/Contingencies | 5,955 | 50,000 | 12 |
| 37 Auto Rental/RTC Vehicle Maintenance | 238 | 4,000 | 6 |
| 38 Travel / Education / Training | 7,360 | 26,000 | 28 |
| 39 Utilities | 3,887 | 9,000 | 43 |
| 40 Bike to Work | 21,951 | 50,000 | 44 |
| 41 Bollage-Ecology Action | | 10,280 | |
| 42 Community Traffic Safety Coalition | 44,709 | 100,000 | 45 |
| 43 Office Equipment | 5,195 | 15,000 | 35 |
| 44 Traffic Monitoring | | 15,000 | |
| 45 MBSST Project - Services & Supplies | | 50,000 | |
| 46 Unified Corridor Investment | 153,839 | 153,860 | 100 |
| 47 Bike Signage Program | | 40,000 | |
| 48 User Oriented Transit Travel Plannng Materials | | 13,555 | |
| 49 Passenger Rail Study - Consultant | 6,334 | 34,199 | 19 |
| 50 Transfer Out - (Rail/Trail Authority) | | 110,000 | |
| 51 Environmental Document for MTP/RTP | | 5,000 | |
| 52 Printing & Pub Info Material/Documents | | 40,000 | |
| 53 Annual Report/Fact Sheets | | 10,000 | |
| 54 Other Expenses | 1,730 | 0 | |
| 55 TOTAL EXPENDITURES | 976,067 | 2,630,397 | 37 |
| 56 | | | |
| 57 | (107,388) | (574,571) | |

RURAL PLANNING ASSISTANCE FUNDS
REVENUES, EXPENDITURES, AND CHANGE IN FUND BALANCE
FY 2015-2016
PERIOD ENDING 12-31-2015

| | FY 2015-2016 ACTUAL | FY 2015-2016 BUDGET | FY 2015-2016 ACTUAL % OF Budget |
|--|------------------------|------------------------|---------------------------------------|
| 1 REVENUES | | | |
| 2 | | | |
| 3 Rural Planning Assistance Funds | 146,301 | 337,031 | 43 |
| 4 | | | |
| 5 TOTAL REVENUES | 146,301 | 337,031 | 43 |
| 6 | | | |
| 7 EXPENDITURES | | | |
| 8 | | | |
| 9 Salaries & Benefits | 145,446 | 337,031 | 43 |
| 10 | | | |
| 11 TOTAL EXPENDITURES | 145,446 | 337,031 | 43 |
| 12 | | | |
| 13 EXCESS OF REVENUES OVER EXPENDITURES | 855 | - | |

SERVICE AUTHORITY FOR FREEWAY EMERGENCIES (SAFE)
BALANCE SHEET
FY 2015-2016
AS OF 12-31-2015

| | | FY 2015-2016 |
|-----------|---------------------------------------|---------------------|
| 1 | ASSETS: | |
| 2 | Cash | 547,477 |
| 3 | Due From Other Funds | 4,000 |
| 4 | Due From Other Agencies | 35,351 |
| 5 | TOTAL ASSETS | 586,827 |
| 6 | | |
| 7 | LIABILITIES & EQUITY: | |
| 8 | Accounts Payable | 6,940 |
| 9 | Due to Other Funds | 20,135 |
| 10 | Due to Other Agencies | 36,032 |
| 11 | Fund Balance: | |
| 12 | Reserved (1) | |
| 13 | Available | 523,720 |
| 14 | Fund Balance | 523,720 |
| 15 | TOTAL LIABILITIES & EQUITY | 586,827 |

Note:

SERVICE AUTHORITY FOR FREEWAY EMERGENCIES (SAFE)
REVENUES, EXPENDITURES, AND CHANGE IN FUND BALANCE

FY 2015-2016

PERIOD ENDING 12-31-2015

| | FY 2015-2016 ACTUAL | FY 2015-2016 BUDGET | FY 2015-2016 ACTUAL % OF Budget |
|---|--------------------------------|--------------------------------|--|
| 1 REVENUES | | | |
| 2 Interest | 1,628 | 3,000 | 54 |
| 3 Department of Motor Vehicle (DMV) Fee | 124,211 | 238,000 | 52 |
| 4 Local Financial Assistance (MTC) | 17,040 | 50,000 | 34 |
| 5 Other Revenues | 997 | | |
| 6 TOTAL REVENUES | 143,875 | 291,000 | 49 |
| 7 EXPENDITURES | | | |
| 8 Other Insurance (Property) | 4,000 | 5,000 | 80 |
| 9 Supplies/Office Expense | 64 | 2,000 | 3 |
| 10 Legal Fees | 150 | 1,000 | 15 |
| 11 Salaries & Benefits | 53,172 | 129,507 | 41 |
| 12 Special Misc Expense - Service (Contingencies) | | 2,500 | - |
| 13 Travel / Education / Training | 47 | 2,000 | 2 |
| 14 Call Answering (Connections Communication) | 1,055 | 3,000 | 35 |
| 15 Utilities | 182 | 1,200 | 15 |
| 16 CHP Operations | | 600 | - |
| 17 Network Access Fees (AT&T) | 530 | 1,000 | 53 |
| 18 System Maintenance | 21,211 | 46,000 | 46 |
| 19 Safe on 17 | 35,976 | 100,000 | 36 |
| 20 Callbox Upgrade | | 100,000 | - |
| 21 Transfer Out to Rideshare 511 | | 50,000 | - |
| 22 TOTAL EXPENDITURES | 116,386 | 443,807 | 26 |
| 23 EXCESS OF REVENUES OVER EXPENDITURES | 27,489 | (152,807) | |
| 24 Beginning Fund Balance | 496,231 | | |
| 25 Prior Year Adjustment | | | |
| 26 ENDING FUND BALANCE | 523,720 | | |

FREeway SERVICE PATROL (FSP)
BALANCE SHEET
FY 2015-2016
AS OF 12-31-2015

| | | FY 2015-2016 |
|-----------|---------------------------------------|---------------------|
| 1 | ASSETS: | |
| 2 | Cash | 52,363 |
| 3 | Due From Other Agencies | 85,598 |
| 4 | | |
| 5 | TOTAL ASSETS | 137,961 |
| 6 | | |
| 7 | LIABILITIES & EQUITY: | |
| 8 | Accounts Payable | 37,205 |
| 9 | Due to Other Funds | 19,225 |
| 10 | Fund Balance: | |
| 11 | Reserved | |
| 12 | Available | 81,530 |
| 13 | Fund Balance | 81,530 |
| 14 | TOTAL LIABILITIES & EQUITY | 137,961 |

FREEMAN SERVICE PATROL (FSP)
COMBINED REVENUES, EXPENDITURES, AND CHANGE IN FUND BALANCE
FY 2015-2016
PERIOD ENDING 12-31-2015

| | FY 2015-2016 ACTUAL | FY 2015-2016 BUDGET | FY 2015-2016 ACTUAL % OF Budget |
|---|--------------------------------|--------------------------------|--|
| 1 REVENUES | | | |
| 2 Interest | 142 | 1,000 | 14 |
| 3 Caltrans | 85,598 | 170,598 | 50 |
| 4 STP Exchange | 135,000 | 285,000 | 47 |
| 5 Other Revenues | | | |
| 6 TOTAL REVENUES | 220,739 | 456,598 | 48 |
| 7 | | | |
| 8 EXPENDITURES | | | |
| 9 Telephone | 562 | 2,000 | 28 |
| 10 Other Insurance (Property) | 4,000 | 4,000 | 100 |
| 11 Supplies/Office Expense | 150 | 4,000 | 4 |
| 12 Legal Fees | | 1,000 | - |
| 13 Salaries & Benefits | 24,709 | 76,060 | 32 |
| 14 Special Misc Expense - Service (Contingencies) | | 5,000 | - |
| 15 Transportation/Travel/Education & Training | | 1,000 | - |
| 16 Towing | 125,854 | 285,000 | 44 |
| 17 TOTAL EXPENDITURES | 155,275 | 378,060 | 41 |
| 18 | | | |
| 19 EXCESS OF REVENUES OVER EXPENDITURES | 65,464 | 78,538 | |
| 20 Beginning Fund Balance | 16,066 | | |
| 21 Adjustment | | | |
| 22 ENDING FUND BALANCE | 81,530 | | |

RAIL/TRAIL AUTHORITY
BALANCE SHEET
FY 2015-2016
AS OF 12-31-2015

| | | FY 2015-2016 |
|----|---------------------------------------|-------------------|
| 1 | ASSETS: | |
| 2 | Cash | 425,422 |
| 3 | Accounts Receivable | 23,884 |
| 4 | Due From Other Funds | 20 |
| 5 | Due From Other Agencies | 357,838 |
| 6 | Fixed Assets | 14,200,000 |
| 7 | TOTAL ASSETS | 15,007,166 |
| 8 | | |
| 9 | LIABILITIES & EQUITY: | |
| 10 | Accounts Payable | |
| 11 | Due to Other Funds | 50,520 |
| 12 | Due to Other Agencies | 5,750 |
| 13 | Deferred Revenues | 560,064 |
| 14 | Investment in Fixed Assets | 14,200,000 |
| 15 | Fund Balance: | |
| 16 | Reserved (1) | 190,832 |
| 17 | Available | 190,832 |
| 18 | Fund Balance | 190,832 |
| 19 | TOTAL LIABILITIES & EQUITY | 15,007,166 |

RAIL/TRAIL AUTHORITY
REVENUES, EXPENDITURES, AND CHANGE IN FUND BALANCE
FY 2015-2016
PERIOD ENDING 12-31-2015

| | FY 2015-2016 ACTUAL | FY 2015-2016 BUDGET | FY 2015-2016 ACTUAL % OF Budget |
|--|------------------------|------------------------|---------------------------------------|
| 1 REVENUES | | | |
| 2 Interest | 1,947 | | |
| 3 Leases | 47,772 | 100,000 | 48 |
| 4 RSTP/RSTPX Exchange | | 567,822 | - |
| 5 Transfer In | | 110,000 | - |
| 6 Other Revenues | - | | |
| 7 TOTAL REVENUES | 49,719 | 777,822 | 6 |
| 8 | | | |
| 9 EXPENDITURES | | | |
| 10 Salaries & Benefits | 66,831 | 185,010 | 36 |
| 11 Liability Insurance | | 30,000 | - |
| 12 Rail Line ROW Clean Up, Maintenance & Signage | 6,429 | 55,000 | 12 |
| 13 Hazardous Materials & Pollution Insurance | | 10,000 | - |
| 14 Construction Legal Counsel | 6,839 | 30,000 | 23 |
| 15 Site Management | | 30,000 | - |
| 16 Consultant for Operations and Property Management | | 55,000 | - |
| 17 General Contingencies | 2,325 | 30,000 | 8 |
| 18 Other Expenses | | | |
| 19 Rail Line Rehabilitation | 69,000 | 615,000 | 11 |
| 20 TOTAL EXPENDITURES | 151,423 | 1,040,010 | 15 |
| 21 | | | |
| 22 EXCESS OF REVENUES OVER EXPENDITURES | (101,704) | (262,188) | |
| 23 Beginning Fund Balance | 292,536 | | |
| 24 Prior Year Adjustment | | | |
| 25 ENDING FUND BALANCE | 190,832 | | |

HIGHWAY I PA/ED
COMBINE BALANCE SHEET
FY 2015-2016
AS OF 12-31-2015

| | FY 2015-2016 |
|--|---------------------|
| 1 ASSETS: | |
| 2 Cash | 346,214 |
| 3 | |
| 4 TOTAL ASSETS | 346,214 |
| 5 | |
| 6 LIABILITIES & EQUITY: | |
| 7 Accounts Payable | 197,016 |
| 8 Due to Other Funds | 82,890 |
| 9 Fund Balance: | |
| 10 Reserved (1) | |
| 11 Available | 66,309 |
| 12 Fund Balance | 66,309 |
| 13 TOTAL LIABILITIES & EQUITY | 346,214 |

Note:

**HIGHWAY 1 PA/ED
(HOV Lane and Aux Lane Combined)
HIGHWAY 1 PA/ED HOV LANE**

FY 2015-2016

PERIOD ENDING 12-31-2015

| | FY 2015-2016 ACTUAL | FY 2015-2016 BUDGET | FY 2015-2016 ACTUAL % OF Budget |
|---|------------------------|------------------------|---------------------------------------|
| 1 REVENUES | | | |
| 2 Interest | 1,459 | | |
| 3 RSTPX HOV Lanes | | 870,000 | - |
| 4 RSTP Exchange (Mar Vista & Aux Lanes) | | 699,825 | - |
| 5 | | | |
| 6 TOTAL REVENUES | 1,459 | 1,569,825 | - |
| 7 | | | |
| 8 EXPENDITURES | | | |
| 9 Salaries & Benefits | 115,475 | 241,958 | 48 |
| 10 PAVED Public Information-Materials and Postage | 328 | 30,000 | 1 |
| 11 PAVED on Call Consultants (Dale) | - | 3,500 | - |
| 12 Nolte Associates | 279,548 | 938,744 | 30 |
| 13 ROW Consultant (Bender Rosenthal) | 523 | 30,100 | 2 |
| 14 Legal Fees - Aux Lanes | | 185,000 | - |
| 15 Reserve for Future Years | | 111,422 | - |
| 16 Hwy 1 Mar Vista Overcrossing PAIED | | 475,000 | - |
| 17 | | | |
| 18 TOTAL EXPENDITURES | 395,875 | 2,015,724 | 20 |
| 19 | | | |
| 20 EXCESS OF REVENUES OVER EXPENDITURES | (394,415) | (445,899) | |
| 21 Beginning Fund Balance | 460,724 | | |
| 22 Prior Year Adjustment | | | |
| 23 ENDING FUND BALANCE | 66,309 | | |

Note:

HIGHWAY 1 AUX LANES CONSTRUCTION
COMBINE BALANCE SHEET
FY 2015-2016
AS OF 12-31-2015

| | FY 2015-2016 |
|--|---------------------|
| 1 ASSETS: | |
| 2 Cash | 265,785 |
| 3 Due From Other Agencies | 36,310 |
| 4 TOTAL ASSETS | 302,095 |
| 5 | |
| 6 LIABILITIES & EQUITY: | |
| 7 Due to Other Funds | 9,551 |
| 8 Due to Other Agencies | 2,625 |
| 9 Deferred Revenues | 289,918 |
| 10 Fund Balance: | |
| 11 Reserved (1) | |
| 12 Available | 0 |
| 13 Fund Balance | 0 |
| 14 TOTAL LIABILITIES & EQUITY | 302,095 |

Note:

**HIGHWAY 1 AUX LANES CONSTRUCTION
REVENUES AND EXPENDITURES**

FY 2015-2016

PERIOD ENDING 12-31-2015

| | FY 2015-2016 ACTUAL | FY 2015-2016 BUDGET | FY 2015-2016 ACTUAL % OF Budget |
|---|--------------------------------|--------------------------------|--|
| 1 REVENUES | | | |
| 2 Interest | 933 | | |
| 3 CMA | 54,655 | 369,220 | 15 |
| 4 OTHER | | | |
| 5 TOTAL REVENUES | 55,588 | 369,220 | 15 |
| 6 | | | |
| 7 EXPENDITURES | | | |
| 8 Salaries & Benefits | 23,471 | 40,000 | 59 |
| 9 Legal Counsel | 20,269 | 158,745 | 13 |
| 10 Construction Design Support (Nolte) | 14,355 | 20,933 | 69 |
| 11 Construction Management Consultant (Parsons) | 2,397 | 10,244 | 23 |
| 12 Construction Contract With Contingency | 1,456 | 139,298 | 1 |
| 13 TOTAL EXPENDITURES | 61,948 | 369,220 | 17 |
| 14 | | | |
| 15 EXCESS OF REVENUES OVER EXPENDITURES | (6,360) | - | |
| 16 Beginning Fund Balance | 6,360 | | |
| 17 Adjustment | | | |
| 18 ENDING FUND BALANCE (1) | 0 | | |

Note: (1) The fund is drawing down the advance to fund expenditures

TRUST/FIDUCIARY FUNDS

**TRANSPORTATION DEVELOPMENT ACT (TDA)
BALANCE SHEET
FY 2015-2016
AS OF 12-31-2015**

| | FY 2015-2016 |
|--|---------------------|
| 1 ASSETS: | |
| 2 Cash | 2,486,769 |
| 3 | |
| 4 TOTAL ASSETS | 2,486,769 |
| 5 | |
| 6 LIABILITIES & EQUITY: | |
| 7 Account Payable (a) | 193,533 |
| 8 Fund Balance: | |
| 9 Reserved (1) | 2,293,237 |
| 10 Available | 2,293,237 |
| 11 Fund Balance | |
| 12 TOTAL LIABILITIES & EQUITY | 2,486,769 |

Notes:

(a) Due to the City of Santa Cruz

TRANSPORTATION DEVELOPMENT ACT (TDA)
REVENUES, EXPENDITURES, AND CHANGE IN FUND BALANCE
FY 2015-2016
PERIOD ENDING 12-31-2015

| | FY 2015-2016 ACTUAL | FY 2015-2016 BUDGET | FY 2015-2016 ACTUAL % OF Budget |
|---|--------------------------------|--------------------------------|--|
| 1 REVENUES | | | |
| 2 Interest | 7,576 | 12,000 | 63 |
| 3 Transportation Development Act (TDA) | 4,633,411 | 8,628,404 | 54 |
| 4 | | | |
| 5 TOTAL REVENUES | 4,640,987 | 8,640,404 | 54 |
| 6 | | | |
| 7 EXPENDITURES | | | |
| 8 City of Capitola | | 169,501 | |
| 9 City of Santa Cruz | 193,533 | 421,942 | 46 |
| 10 City of Scotts Valley | | 92,170 | - |
| 11 City of Watsonville | | 346,932 | - |
| 12 SCCRTC | 590,675 | 1,181,350 | 50 |
| 13 SCMTD | 3,188,746 | 6,377,491 | 50 |
| 14 County of Santa Cruz | | 783,753 | - |
| 15 Specialized Transit (CTSA/Community Bridges) | 355,051 | 626,561 | 57 |
| 16 Volunteer Center | 73,809 | 74,591 | 99 |
| 17 | | | |
| 18 TOTAL EXPENDITURES | 4,401,813 | 10,074,291 | 44 |
| 19 | | | |
| 20 EXCESS OF REVENUES OVER EXPENDITURES | 239,174 | (1,433,887) | |
| 21 Beginning Fund Balance | 2,054,063 | | |
| 22 | | | |
| 23 ENDING FUND BALANCE | 2,293,237 | | |

**STP EXCHANGE
BALANCE SHEET
FY 2015-2016
AS OF 12-31-2015**

| | | FY 2015-2016 |
|----|---------------------------------------|---------------------|
| 1 | ASSETS: | |
| 2 | Cash | 9,622,173 |
| 3 | TOTAL ASSETS | 9,622,173 |
| 4 | | |
| 5 | LIABILITIES & EQUITY: | |
| 6 | | |
| 7 | Accounts Payable | 5,733 |
| 8 | Fund Balance: | |
| 9 | Reserved (1) | |
| 10 | Available | 9,616,440 |
| 11 | Fund Balance | 9,616,440 |
| 12 | TOTAL LIABILITIES & EQUITY | 9,622,173 |

STP EXCHANGE
COMBINED REVENUES, EXPENDITURES, AND CHANGE IN FUND BALANCE
FY 2015-2016
PERIOD ENDING 12-31-2015

| | FY 2015-2016 ACTUAL | FY 2015-2016 BUDGET | FY 2015-2016 ACTUAL % OF Budget |
|---|------------------------|------------------------|---------------------------------------|
| 1 REVENUES | | | |
| 2 Interest | 24,606 | 30,000 | 82 |
| 3 TOTAL REVENUES | 24,606 | 30,000 | 82 |
| 4 | | | |
| 5 EXPENDITURES | | | |
| 6 City of Capitola | | 538,000 | - |
| 7 City of Santa Cruz | | 188,000 | - |
| 8 City of Scotts Valley | | 346,000 | - |
| 9 City of Watsonville | | 900,000 | - |
| 10 County of Santa Cruz | | 2,707,016 | - |
| 11 County of Santa Cruz Open Streets | | 22,934 | - |
| 12 SCCRTC - Park & Ride Lot | | 130,000 | - |
| 13 SCCRTC - Mar Vista Bike * Pedetrian Crossing | | 500,000 | - |
| 14 SCCRTC - Bike Route Signage | | 60,906 | - |
| 15 SCCRTC - FSP | 135,000 | 135,000 | 100 |
| 16 SCCRTC - MBSST | | 132,000 | - |
| 17 SCCRTC - Hwy 1 (HOV & Aux Lanes) | | 1,055,000 | - |
| 18 SCCRTC - Ecology Action Boltage | | 25,000 | - |
| 19 Santa Cruz Metro Maintenance Routes Runtimes | 27 | 15,385 | 0 |
| 20 TOTAL EXPENDITURES | 135,027 | 6,755,241 | 2 |
| 21 | | | |
| 22 EXCESS OF REVENUES OVER EXPENDITURES | (110,421) | (6,725,241) | |
| 23 Beginning Fund Balance | - | | |
| 24 Adjustment | - | | |
| 25 ENDING FUND BALANCE | (110,421) | | |

STATE TRANSIT ASSISTANCE (STA)
BALANCE SHEET
FY 2015-2016
AS OF 12-31-2015

| | | FY 2015-2016 |
|----|---------------------------------------|----------------|
| 1 | ASSETS: | |
| 2 | Cash | 29,951 |
| 3 | Due From Other Agencies | 914,807 |
| 4 | TOTAL ASSETS | 944,758 |
| 5 | | |
| 6 | LIABILITIES & EQUITY: | |
| 7 | Due to Other Agencies | 944,551 |
| 8 | Fund Balance: | |
| 9 | Reserved | |
| 10 | Available | 207 |
| 11 | Fund Balance | 207 |
| 12 | TOTAL LIABILITIES & EQUITY | 944,758 |

STATE TRANSIT ASSISTANCE (STA)
 COMBINED REVENUES, EXPENDITURES, AND CHANGE IN FUND BALANCE
 FY 2015-2016
 PERIOD ENDING 12-31-2015

| | FY 2015-2016 ACTUAL | FY 2015-2016 BUDGET | FY 2015-2016 ACTUAL % OF Budget |
|---|------------------------|------------------------|---------------------------------------|
| 1 REVENUES | | | |
| 2 | | | |
| 3 Interest | 206 | | |
| 4 State Transit Assistance (STA) | 914,807 | 2,861,896 | 32 |
| 5 | | | |
| 6 TOTAL REVENUES | 915,013 | 2,861,896 | 32 |
| 7 | | | |
| 8 EXPENDITURES | | | |
| 9 | | | |
| 10 SCMTD (Transit District) | 944,551 | 2,861,896 | 33 |
| 11 | | | |
| 12 TOTAL EXPENDITURES | 944,551 | 2,861,896 | 33 |
| 13 | | | |
| 14 EXCESS OF REVENUES OVER EXPENDITURES | (29,538) | - | |
| 15 Beginning Fund Balance | 29,744 | | |
| 16 Adjustment | | | |
| 17 ENDING FUND BALANCE | 206 | | |

Note:

OTHER TRUST FUNDS
BALANCE SHEET
FY 2015-2016
AS OF 12-31-2015

| PERS HEALTH FY 2015-2016 (Fund 636) | IN LIEU OF SOC. SECURITY FY 2015-2016 (Fund 637) | MISC DEDUCTIONS FY 2015-2016 (Fund 639) |
|--|---|--|
|--|---|--|

| | | | |
|--|---------------|--------------|--------------|
| 1 ASSETS: | | | |
| 2 Cash | 30,541 | 9,227 | 6,574 |
| 3 Accounts Receivable | | 198 | |
| 4 | | | |
| 5 TOTAL ASSETS | 30,541 | 9,425 | 6,574 |
| 6 | | | |
| 7 LIABILITIES & EQUITY: | | | |
| 8 Accounts Payable | | | 214 |
| 9 Fund Balance: | | | |
| 10 Reserved | 30,541 | 9,425 | 6,360 |
| 11 Available | 30,541 | 9,425 | 6,360 |
| 12 Fund Balance | 30,541 | 9,425 | 6,574 |
| 13 TOTAL LIABILITIES & EQUITY | | | |

OTHER TRUST FUNDS
COMBINED REVENUES, EXPENDITURES, AND CHANGE IN FUND BALANCE
FY 2015-2016
PERIOD ENDING 12-31-2015

| | PERS HEALTH FY 2015-2016 (Fund 636) | IN LIEU OF SOC. SECURITY FY 2015-2016 (Fund 637) | MISC DEDUCTIONS FY 2015-2016 (Fund 639) |
|--|---|---|--|
| 1 REVENUES | | | |
| 2 | | | |
| 3 Interest | | 28 | |
| 4 Transfer In | 14,058 | | |
| 5 Other Revenues | 169,712 | | 9,361 |
| 6 TOTAL REVENUES | 183,771 | 28 | 9,361 |
| 7 | | | |
| 8 EXPENDITURES | | | |
| 9 PERS - Health | 178,997 | | |
| 10 Other Benefits, Deduction, & AFLAC/Flex Account | 12,750 | | 9,734 |
| 11 | | | |
| 12 TOTAL EXPENDITURES | 191,747 | - | 9,734 |
| 13 | | | |
| 14 EXCESS OF REVENUES OVER EXPENDITURES | (7,977) | 28 | (372) |
| 15 Beginning Fund Balance | 38,518 | 9,397 | 6,732 |
| 16 Adjustment | | | - |
| 17 ENDING FUND BALANCE | 30,541 | 9,425 | 6,360 |

AGENDA: April 7, 2016

TO: Regional Transportation Commission (RTC)
FROM: Yesenia Parra, Administrative Services Officer
RE: CalPERS Employer Paid Member Contributions Change

RECOMMENDATIONS

Staff recommends that the Santa Cruz County Regional Transportation Commission (RTC) adopt the CalPERS resolution ([Attachment 2](#)) for the CalPERS retirement Employer Paid Member Contributions to change the contribution responsibility from the RTC to the Community of RTC Employees (CORE) consistent with the approved MOU side letter ([Attachment 1](#)).

BACKGROUND

The RTC approved a 3 year extension agreement for the memoranda of understanding (MOU's) of the RTC bargaining units, Community of RTC Employees (CORE) and the RTC Association of Middle Managers (RAMM) at its March 5, 2015 Commission meeting. One of the provisions of the extension to the Memorandum of understanding (MOU) for the Community of RTC Employees (CORE) only is that the CORE unit employees would contribute towards their retirement costs effective April 1, 2015. All other RTC employees have been paying the employee share of the retirement plan costs for many years.

DISCUSSION

To offset this contribution by CORE to the employee share of the retirement plan costs, a special adjustment was also approved as outlined below.

1. Special Adjustment as follows: effective April 1 or at the beginning of the pay period closest to April 1 of each year: 3.5% 2015; 3.5% 2016
2. Employees will pay 3.5% of the employees CalPERS retirement contribution beginning April 1, 2015 and the total 7% contribution beginning April 1, 2016 or the closest pay period to April 1st of each of those years

Effective March 28, 2016 (closest pay period to April 1), members of the CORE unit will contribute the additional 3.5% for a total of 7% of the cost for their CalPERS retirement plan and receive the last special adjustment to offset the retirement cost of 3.5% consistent with the approved MOU extension. CalPERS requires the approval of a specific resolution to shift the responsibility for payment of the

employee contribution from RTC to the employees. The resolution required by CalPERS is included as Attachment 2.

SUMMARY

Pursuant to the approval of the Memorandum of Understanding with the Community of RTC (CORE) Employees, the total cost of 7% for the CalPERS retirement benefit will be shifted to the employees effective March 28, 2016 (closest pay period to April 1). To offset this cost, employees will receive a special adjustment of 3.5% consistent with the approved MOU extension, Attachment 1. Therefore, staff recommends that the RTC approve the resolution required by CalPERS (Attachment 2) to shift the responsibility for payment for CalPERS retirement plan from the RTC to CORE employees.

Attachments:

1. Approved Memorandum of Understanding side letter for the RTC CORE unit.
2. Resoultion for CalPERS Employer Paid Member Contribution for Community of RTC Employees (CORE)

**SIDE LETTER AGREEMENT TO THE
MEMORANDUM OF UNDERSTANDING BETWEEN THE
SANTA CRUZ COUNTY REGIONAL TRANSPORTATION COMMISSION (RTC) AND THE COMMUNITY OF
RTC EMPLOYEES (CORE), SERVICE EMPLOYEES INTERNATIONAL UNION (SEIU) LOCAL 521
Effective April 1, 2015**

The Santa Cruz County Regional Transportation Commission (RTC) and Community of RTC Employees, represented by Service Employees International Union (SEIU) Local 521 (CORE) have met and conferred in good faith and agreed as follows:

1. The current Memorandum of Understanding (MOU) between RTC and CORE with effective dates September 11, 2007 through November 13, 2010 and the prior amendments to that MOU, including the Side Letter signed by the parties extending that MOU to March 31, 2015, shall be further extended to March 31, 2018.
2. The terms and conditions set forth in the MOU, including in any applicable Side Letters, shall continue in effect under this Side Letter extension of the MOU, except as set forth in paragraphs 3, 4, 5 and 6.
3. The RTC agrees to maintain the current level of all benefits for current and active employees and retirees. The RTC agrees to pay the same percentage of benefit premiums to active employees as outlined in the MOU using the 2015, 2016, 2017, and 2018 premium costs for each calendar year. As previously under this MOU, the RTC will increase the monthly medical premium contributions for retirees by \$50 for each calendar year 2016, 2017 and 2018, not to exceed the actual cost of the plan selected.
4. The RTC agrees to the following adjustments:
 - A. General Adjustment (Article 7.1 A):
The following language shall be added: CORE employees shall receive a cost of living adjustment (COLA) effective on the following dates:
 - o 2% COLA on April 1, 2015 or on the first day of the pay period closest to that date
 - o 2% COLA on April 1, 2016 or on the first day of the pay period closest to that date
 - o 2% COLA on April 1, 2017 or on the first day of the pay period closest to that date
5. The RTC agrees to the following general equity offset/PERS contributions adjustments:
 - A. Special Adjustments (Article 7.1 B)
The following language shall be added: As a general equity offset, each step in the salary range for all employees shall be increased by 3.5% effective April 1, 2015, or on the first day of the pay period closest to that date.

Each step in the salary range for all employees shall be increased by 3.5% effective April 1, 2016, or on the first day of the pay period closest to that date.

B. Retirement (PERS) – Local Miscellaneous Members (Article 9.1)

A. Pension Formula for Current and Legacy Employees

A.1. Contributions to Pension for Current and Legacy Employees: Replace with the following language: Effective April 1, 2015, or on the first day of the pay period closest to this date, these employees shall pay 3.5% toward the member contributions to their retirement plan and the RTC shall pay 3.5% toward the member contributions also known as the Employer Pick-up of Member Contribution. Effective April 1, 2016, or on the first day of the pay period closest to this date, these employees shall contribute an additional 3.5% (for a total contribution of 7%) toward the member contributions to their retirement plan. RTC will continue to pay the employer contributions on behalf of current and legacy employees covered under the PERS Local Miscellaneous Plan.

6. Compensation Study (Article 21.4)

Both the RTC and SEIU agree to postpone conducting a compensation study by 36 months. A joint compensation study will start October 1, 2017 and be finalized no later than January 14, 2018.

For the SCCRTC

For the Union

George Dondero
Executive Director
SCCRTC

Veronica Rodriguez
SEIU 521

Yesenia Parra
Administrative Services Officer
SCCRTC

Tegan Speiser
CORE Negotiating Team

Ginger Dykaar
CORE Negotiating Team

Date

Nathan Luedtke
CORE Negotiating Team

RESOLUTION NO.

Adopted by the Santa Cruz County Regional Transportation Commission

on the date of April 7, 2016
on the motion of Commissioner
duly seconded by Commissioner

A RESOLUTION FOR EMPLOYER PAID MEMBER CONTRIBUTIONS

WHEREAS, the governing body of the Santa Cruz County Regional Transportation Commission (RTC) has authority to implement Government Code Section 20691; and

WHEREAS, the governing body of the Santa Cruz County Regional Transportation Commission has a written labor policy or agreement which specifically provides for the normal member contributions to be paid by the employer; and

WHEREAS, one of the steps in the procedures to implement Section 20691 is the adoption by the governing body of the Santa Cruz County Regional Transportation Commission of a Resolution to commence said Employer Paid Member Contributions (EPMC);

WHEREAS, the governing body of the Santa Cruz County Regional Transportation Commission has identified the following conditions for the purpose of its election to pay EPMC;

- This benefit shall apply to all employees of the Community of RTC employee unit (CORE)
- This benefit shall consist of paying zero (Percent) of the normal member contributions as EPMC.
- The effective date of this Resolution shall be March 28, 2016.

NOW, THEREFORE, BE IT RESOLVED that the governing body of the Santa Cruz County Regional Transportation Commission elects to pay EPMC, as set forth above.

AYES: COMMISSIONERS:

NOES: COMMISSIONERS:

ABSTAIN: COMMISSIONERS

ABSENT: COMMISSIONERS

Don Lane Chair

ATTEST:

George Dondero, Secretary

Distribution: RTC Fiscal
RTC Administrative Services Officer
CalPERS

TO: Regional Transportation Commission
FROM: Cory Caletti, Senior Transportation Planner/Bicycle Coordinator
RE: Bicycle Advisory Committee Membership Appointments

RECOMMENDATIONS

Staff recommends that the Regional Transportation Commission make the following appointments to the Santa Cruz County Regional Transportation Commission's Bicycle Advisory Committee:

1. Grace Voss (voting) and Kem Akol (alternate) to represent District 1;
 2. Peter Scott (voting) and William Menchine (alternate) to represent District 3;
 3. Rick Hyman (voting) to represent District 5; and
 4. Emily Gomez (voting) and Piet Canin (alternate) to represent Bike to Work.
-

BACKGROUND

Seats on the Regional Transportation Commission's Bicycle Advisory Committee correspond to City and Supervisorial District seats on the Regional Transportation Commission (RTC). Commissioners may nominate individuals for RTC consideration. Two additional seats for Bike to Work and the Community Traffic Safety Coalition also exist and nominations are made by the respective agency. Seats for three-year terms on the Bicycle Committee expire on a rotating basis. This March 2016, positions expire for Districts 1, 3 and 5, as well as that for Bike to Work.

The Bicycle Advisory Committee's description, role and membership are in the 2014 RTC Rules and Regulations ([Attachment 1](#)). A draft roster is also included as [Attachment 2](#).

DISCUSSION

Seats on the Regional Transportation Commission's Bicycle Advisory Committee for Districts 1, 3, 5 and Bike to Work expire on March 31st, 2016. With one exception, all current Bicycle Committee members and alternates representing those jurisdictions expressed interest in reappointment and their requests were forwarded to the respective Commissioners. With the one exception, applications are on file and available for review upon request. Vacancies exist for alternate seats representing Districts 4 and 5; as well as voting and alternate seats for the City of Watsonville. Staff has been working to recruit applicants to fill vacancies and welcomes recommendations from Commissioners.

District 1 – New applicant Grace Voss is seeking appointment as is current voting member Kem Akol. Since Ms. Voss is a new applicant, her application is attached. Mr. Akol has served actively on the Committee since 1993 and his application is on file. Staff forwarded the nomination requests to Commissioner Leopold who nominated Ms. Voss and Mr. Akol for the voting and alternate seats, respectively, for three year terms ([Attachment 3-a and 3-b](#)).

District 3 - For District 3, voting member Peter Scott, who was first appointed in 2007, and Will Menchine, member since 2002, indicated interest in continuing service on the Bicycle Advisory Committee. Their requests were forwarded to Commissioner Coonerty who nominated Mr. Scott and Mr. Menchine for District 3 voting and alternate seats, respectively, for three year terms ([Attachment 3-c](#)).

District 5 – Rick Hyman, District 5 voting representative since 1989, reapplied for appointment to the same position. His request and application was forwarded to Commissioner McPherson who nominated Mr. Hyman to continue service for another three-year term ([Attachment 3-d](#)).

Bike to Work – Emily Gomez (nee Glanville), voting member since 2014, and Piet Canin, member since 2002, each requested that the RTC reappoint them voting and alternate members, respectively. Piet Canin, as Ecology Action's Vice President of Transportation, has the authority to make the nomination. Mr. Canin's nomination is attached ([Attachment 3-e](#)).

Staff recommends that the Regional Transportation Commission approve nominations submitted by Commissioners Leopold, Coonerty, McPherson, and Bike to Work to serve on the RTC's Bicycle Committee.

SUMMARY

Seats on the Regional Transportation Commission's Bicycle Advisory Committee expire March 31, 2016 for Districts 1, 3, and 5, as well as Bike to Work. A new application and reappointment requests were submitted and forwarded to respective Commissioners. Staff recommends that the Regional Transportation Commission appoint the individuals nominated to fill those seats.

Attachments:

1. SCCRTC Rules and Regulations: Exhibit 4 – Bicycle Advisory Committee description
2. Draft Bicycle Committee roster
3. Nomination letters and attachments

Exhibit 3

Committee: **BICYCLE ADVISORY COMMITTEE**

Committee Objectives: Serves in an advisory capacity to the Regional Transportation Commission and its member agencies on bicycle-related issues, policies, plans, programs and projects.

1. Reviews claims submitted to the Commission that deal with bicycle facilities;
2. Reviews recommendations for the bicycle section of the Regional Transportation Plan, including policies, programs and capital improvement projects;
3. Reviews the bicycle sections of other studies, programs and plans prepared by the Commission;
4. Provide input into development of the Monterey Bay Sanctuary Scenic Trail Network as outlined in the adopted Master Plan. Review design and engineering plans for segments at the conceptual and design levels whether the RTC or another entity is the implementing body.
5. Reviews and advises implementing agencies in a timely manner on transportation capital improvement projects with bicycle elements for projects which are either funded by the SCCRTC or are otherwise major, regional level transportation projects. Project review by the Bicycle Advisory Committee involves review of the proposed concept and proposed design for the bicycle features of the transportation project. Local implementing agencies may seek the advice of the Bicycle Committee for more localized, locally funded bicycle projects at their discretion.
6. Advises the local jurisdictions' Public Works and Planning departments and Santa Cruz Metro, at their request, in their other functions as they relate to bicycling, including bicycle plans, policies and ordinances and bikeway maintenance activities.
7. Advises local agencies and the Commission on the implementation of bicycle promotion, safety or outreach programs funded by Commission funds;
8. Reviews and approves applications for Bikes Secure bike parking grant applications;
9. Assists in the pursuit of local, state and federal funds for bicycle projects and advises the Commission on project priorities for funding and grant applications for bicycle projects;
10. Serves as advocates on behalf of the bicycling population regarding bicycle related issues before the Commission.

Committee Membership:

| | |
|--|-------|
| One person representing each of the five supervisorial districts | 5 |
| One person representing each of the four cities | 4 |
| A representative of Bike to Work | 1 |
| A representative of the Community Traffic Safety Coalition | 1 |
| | <hr/> |
| Total | 11 |

Appointments: Members representing agencies specified above are appointed by that agency and accepted by the Commission; all other members are appointed by the Commission based on recommendations of the Bicycle Advisory Committee and via open application process. The cities and the County Supervisors nominate individuals for Committee and Commission consideration.

Quorum: A quorum is six members, assuming that there are no vacant positions. If there are vacant positions, a quorum will be half plus one of the number of filled positions.

Meeting Frequency and Time: Set meeting time as 2nd Monday of every other month, or as needed from 6:00-8:30pm. The time may be changed by the Committee with a majority vote.

Meeting Location: Preferably, at least one meeting annually will be scheduled for an appropriate location outside of the City of Santa Cruz and in proximity to a major transit route.

BICYCLE ADVISORY COMMITTEE ROSTER – April, 2016 DRAFT

| Representing | Member Name/Contact Info | Appointment Dates |
|---|---|--|
| District 1 - Voting Soquel, Live Oak, part of Capitola | Grace Voss 462-4884 gracevoss@sbcglobal.net | First Appointed: 2016 Term Expires: 3/19 |
| Alternate | Kem Akol 247-2944 kemakol@msn.com | First Appointed: 1993 Term Expires: 3/19 |
| District 2 - Voting Aptos, Corralitos, part of Capitola, Nisene Marks, Freedom, PajDunes | David Casterson, Chair 588-2068 dbcasteron@gmail.com | First Appointed: 2005 Term Expires: 3/18 |
| Alternate | Jim Cook 345-4162 wookiv@comcast.net | First Appointed: 12/13 Term Expires: 3/18 |
| District 3 - Voting Big Basin, Davenport, Bonny Doon, City of Santa Cruz | Peter Scott 423-0796 drip@ucsc.edu | First Appointed: 2007 Term Expires: 3/19 |
| Alternate | William Menchine (Will) 426-3528 menchine@cruzio.com | First Appointed: 4/02 Term Expires: 3/19 |
| District 4 - Voting Watsonville, part of Corralitos | Amelia Conlen 425-0665 director@peoplepowersc.org | First Appointed: 5/13 Term Expires: 3/18 |
| Alternate | Vacant | Term Expires: 3/18 |
| District 5 - Voting SL Valley, Summit, Scotts Valley, part of Santa Cruz | Rick Hyman bikerick@att.net | First Appointed: 1989 Term Expires: 3/19 |
| Alternate | Vacant | Term Expires: 3/19 |
| City of Capitola - Voting | Andy Ward 462-6653 Andrew.ward@plantronics.com | First Appointed: 2005 Term Expires: 3/17 |
| Alternate | Daniel Kostelec 325-9623 dnlkostelec@yahoo.com | First Appointed: 4/02 Term Expires: 3/17 |
| City of Santa Cruz - Voting | Melissa Ott Melissaott4@gmail.com | First Appointed: 3/15 Term Expires: 3/18 |
| Alternate | Wilson Fieberling anbfieb@yahoo.com | First Appointed: 2/97 Term Expires: 3/18 |
| City of Scotts Valley - Voting | Lex Rau 419-1817 lexrau@sbcglobal.net | First Appointed: 2007 Term Expires: 3/17 |
| Alternate | Gary Milburn 427-3839 hm g.milburn@sbcglobal.net/438-2888 ext 210 wk | First Appointed: 1997 Term Expires: 3/17 |
| City of Watsonville - Voting | Vacant | Term Expires: 3/19 |
| Alternate | Vacant | Term Expires: 3/19 |
| Bike To Work - Voting | Emily Granville 415-637-2744 eglanville@ecoact.org | First Appointed: 4/14 Term Expires: 3/19 |
| Alternate | Piet Canin 426-5925 ext. 127 pcanin@ecoact.org | First Appointed: 4/02 Term Expires: 3/19 |
| Community Traffic Safety Coalition - Voting | Leo Jed, Vice-Chair 425-2650 leojed@gmail.com | First Appointed: 3/09 Term Expires: 3/18 |
| Alternate | Jim Langley 423-7248 jim@jimlangley.net | First Appointed: 4/02 Term Expires: 3/18 |

All phone numbers have the (831) area code unless otherwise noted.



County of Santa Cruz

BOARD OF SUPERVISORS

701 OCEAN STREET, SUITE 500, SANTA CRUZ, CA 95060-4069
(831) 454-2200 • FAX: (831) 454-3262 TDD: (831) 454-2123

JOHN LEOPOLD
FIRST DISTRICT

ZACH FRIEND
SECOND DISTRICT

RYAN COONERTY
THIRD DISTRICT

GREG CAPUT
FOURTH DISTRICT

BRUCE MCPHERSON
FIFTH DISTRICT

March 29, 2016

Santa Cruz County Regional Transportation Commission
1523 Pacific Avenue
Santa Cruz, CA 95060

Dear Members of the Commission:

I recommend the appointment of Grace Voss to the Regional Transportation Commission's Bicycle Committee, as the voting member, and Kem Alcol as the alternate, both representing the First District.

Thank you for your consideration.

Sincerely,

A handwritten signature in black ink, appearing to read "John Leopold".

JOHN LEOPOLD, Supervisor
First District

JL:fh

COMMITTEE APPOINTMENT APPLICATION

Santa Cruz County Regional Transportation Commission (SCCRTC) Bicycle Committee

Meetings are currently held the second Monday of every other month at 6:30 p.m. in the Santa Cruz County Regional Transportation Commission conference room, located at 1523 Pacific Avenue in downtown Santa Cruz. At least one meeting each year will be scheduled for an alternate location. Please refer to the Committee description, bylaws and recruitment process for more information.

If you are interested in serving on this committee, please complete this application, and return it to the Regional Transportation Commission office.

Please type or print clearly

Name: _____

Home address: _____

Mailing address (if different): _____

Phone: (home) _____ (business/message/mobile) _____

E-mail: _____

Length of residence in Santa Cruz County: _____

Position(s) I am applying for: Any appropriate position

_____ _____

Previous experience on a government commission or committee (please specify)

Relevant Work or Volunteer Experience

| Organization | Town or Address | Position | Dates |
|--------------|-----------------|----------|-------|
| | | | |
| | | | |
| | | | |
| | | | |

Statement of Qualifications: Please attach a brief statement indicating why you are interested in serving on this committee and why you are qualified for the appointment. If you have served on this committee in the past, please summarize your accomplishments on the committee and indicate which of the committee’s potential future endeavors most interest you.

Certification: I certify that the above information is true and correct and I authorize the verification of the information in the application in the event I am a finalist for the appointment.

Signature

Date

Return Application to: SCCRTC
Bicycle Committee
1523 Pacific Avenue
Santa Cruz, CA 95060
fax: (831) 460-3215 or email: ccaletti@sccrtc.org

Questions or Comments: Call Cory Caletti at (831) 460-3201 or by email at ccaletti@sccrtc.org



County of Santa Cruz

BOARD OF SUPERVISORS

701 OCEAN STREET, SUITE 500, SANTA CRUZ, CA 95060-4069
(831) 454-2200 • FAX: (831) 454-3262 TDD: (831) 454-2123

JOHN LEOPOLD
FIRST DISTRICT

ZACH FRIEND
SECOND DISTRICT

RYAN COONERTY
THIRD DISTRICT

GREG CAPUT
FOURTH DISTRICT

BRUCE MCPHERSON
FIFTH DISTRICT

March 29, 2016

Santa Cruz County Regional Transportation Commission
1523 Pacific Avenue
Santa Cruz, CA 95060

Dear Members of the Commission:

I recommend the reappointment of Peter Scott to the Regional Transportation Commission's Bicycle Committee, as the voting member, and William Menchine as the alternate, both representing the Third District.

Thank you for your consideration.

Sincerely,

A handwritten signature in black ink, appearing to read "Ryan Coonerty".

RYAN COONERTY, Supervisor
Third District

RC:fh



County of Santa Cruz

BOARD OF SUPERVISORS

701 OCEAN STREET, SUITE 500, SANTA CRUZ, CA 95060-4069
(831) 454-2200 • FAX: (831) 454-3262 TDD: (831) 454-2123

JOHN LEOPOLD
FIRST DISTRICT

ZACH FRIEND
SECOND DISTRICT

RYAN COONERTY
THIRD DISTRICT

GREG CAPUT
FOURTH DISTRICT

BRUCE MCPHERSON
FIFTH DISTRICT

March 28, 2016

George Dondero, Executive Director
Santa Cruz County Regional Transportation Commission
1523 Pacific Avenue
Santa Cruz, CA 95060

RE: NOMINATION OF RICK HYMAN - RTC BICYCLE ADVISORY COMMITTEE

Dear Mr. Dondero:

I am pleased to nominate Rick Hyman to be reappointed as a voting member of the Regional Transportation Commission's Bicycle Advisory Committee. Mr. Hyman is a daily cyclist and is very knowledgeable regarding the needs of the cycling community. He has served on this committee for a number of years and brings extensive institutional experience to the committee's work.

Thank you for your time and consideration.

Sincerely,

BRUCE MCPHERSON, Supervisor
Fifth District

BAM:fh

Attachment 3-e

From: [Piet Canin](#)
To: [Cory Caletti](#)
Cc: [Emily Gomez](#)
Subject: RTC bike committee reappointment
Date: Friday, February 19, 2016 4:31:49 PM

Hi Cory,

I am writing to request Emily Gomez be reappointed to the Bike To Work seat on the RTC Bicycle Advisory Committee and myself as the alternate seat.

Thank you for your consideration.

Piet Canin | Vice President Transportation
EcologyAction | [EcoAct.org](#)
Direct (831) 515-1327 | Cell (831) 227-8987

**Santa Cruz County Regional Transportation Commission
THREE MONTH MEETING SCHEDULE**

**April 2016
Through
June 2016**

**All meetings are subject to cancellation when there are no action items to be considered by
the board or committee**

**Please visit our website for meeting agendas and locations
www.sccrtc.org/meetings/**

| Meeting Date | Meeting Day | Meeting Type | Meeting Time | Meeting Place |
|---------------------|--------------------|---|---------------------|--------------------------------------|
| 4/7/16 | Thursday | Regional Transportation Commission | 9:00 am | County Board of Supervisors Chambers |
| 4/11/16 | Monday | Bicycle Advisory Committee | 6:00 pm | Commission Offices |
| 4/12/16 | Tuesday | Elderly & Disabled Transportation Advisory Committee | 1:30 pm | Watsonville Community Room |
| 4/14/16 | Thursday | Budget & Administration/Personnel Committee | 3:00 pm | CAO Conference Room |
| 4/21/16 | Thursday | Transportation Policy Workshop | 9:00 am | Commission Offices |
| 4/21/16 | Thursday | Interagency Technical Advisory Committee | 1:30 pm | Commission Offices |
| 5/5/16 | Thursday | Regional Transportation Commission | 9:00 am | City of Capitola Council Chambers |
| 5/10/16 | Tuesday | <u>Special Meeting:</u> Elderly & Disabled Transportation Advisory Committee | 1:30 am | Commission Offices |
| 5/19/16 | Thursday | Transportation Policy Workshop | 9:00 am | Commission Offices |
| 5/26/16* | Thursday | Interagency Technical Advisory Committee *Note meeting to be held one week later | 1:30 pm | Commission Offices |
| 6/2/16 | Thursday | Regional Transportation Commission | 9:00 am | City of Watsonville Council Chambers |
| 6/6/16* | Monday | Bicycle Advisory Committee *Note Special Date | 6:00 pm | Commission Offices |
| 6/9/16 | Thursday | Budget & Administration/Personnel Committee | 3:00 pm | CAO Conference Room |
| 6/14/16 | Tuesday | Elderly & Disabled Transportation Advisory Committee | 1:30 pm | Commission Offices |
| 6/16/16 | Thursday | Transportation Policy Workshop | 9:00 am | Commission Offices |
| 6/16/16 | Thursday | Interagency Technical Advisory Committee | 1:30 pm | Commission Offices |

Commission Offices – 1523 Pacific Ave., Santa Cruz, CA

Board of Supervisors Chambers/CAO/RDA Conference room – 701 Ocean St-5th floor, Santa Cruz, CA

City of Capitola Council Chambers – 420 Capitola Ave, Capitola, CA

City of Santa Cruz Council Chambers – 809 Center St, Santa Cruz, CA

City of Scotts Valley Council Chamber – 1 Civic Center Dr, Scotts Valley, CA

City of Watsonville Council Chambers/Community Room – 275 Main St, Ste 400, Watsonville, CA

Correspondence Log
April 7, 2016

| Date Letter Rec'd/Sent | Format | Incoming/Outgoing | Response | TO | | | FROM | | | Subject |
|------------------------|--------|-------------------|----------------|---|---|---|-----------|----------|---------------------------------|---|
| | | | | First | Last | Organization | First | Last | Organization | |
| 02/23/16 | Letter | I | | George | Dondero | SCCRTC | Terry | Corwin | Land Trust of Santa Cruz County | North Coast Rail Trail Project |
| 02/23/16 | Letter | I | | George | Dondero | SCCRTC | Richard A | Stedman | MBUAPCD | Sublease for Watsonville Office |
| 02/24/16 | Email | I | KS 02/24/16 | | | SCCRTC | Kym | DeWitt | | Highway 1 Corridor Investment Program |
| 02/25/16 | Email | I | CJ 02/26/16 | | | SCCRTC | Theresa A | Mantz | | Trail Now |
| 02/29/16 | Letter | O | | Dody | Anderson | Watsonville Public Library | Rachel | Moriconi | SCCRTC | Rail Transit Feasibility Study - Final Report |
| 02/29/16 | Letter | O | | Jennifer | Cockerill | Santa Cruz Public Library | Rachel | Moriconi | SCCRTC | Rail Transit Feasibility Study - Final Report |
| 02/29/16 | Letter | O | | Paia Rich Juliana Taylor Suzi Barrow | Levine Grunow Rebagliati Bateman Merriam Emerson | County of Santa Cruz City of Capitola City of Santa Cruz City of Scotts Valley City of Watsonville SCMTD | Rachel | Moriconi | SCCRTC | Rail Transit Feasibility Study - Final Report |
| 02/29/16 | Email | I | CJ 03/01/16 | | | SCCRTC | Kristen | Rice | | Trail Now |

Correspondence Log
April 7, 2016

| Date Letter Rec'd/Sent | Format | Incoming/Outgoing | Response | TO | | | FROM | | | Subject |
|------------------------|--------|-------------------|---------------------------|-------|----------|----------------------|-----------|---------|-----------------------|--|
| | | | | First | Last | Organization | First | Last | Organization | |
| 03/01/16 | Letter | O | | Alex | Clifford | SCMTD | Veronica | Elsa | SCCRTC, E&D TAC Chair | May 10, 2016 Special Meeting of the Elderly & Disabled Transportation Advisory Committee - Santa Cruz Metro Service Reductions |
| 03/01/16 | Email | I | CJ 03/01/16 | | | SCCRTC | David | Eselius | | Corruption |
| 03/03/16 | Email | I | CJ 03/03/16 | | | SCCRTC | Katherine | Bell | | Trail Now |
| 03/03/16 | Email | I | CJ 03/03/16 | | | SCCRTC | David | Eselius | | Global Warming Future |
| 03/03/16 | Email | I | SC Caltrans (03/03/16) | | | Caltrans, District 5 | David | Eselius | | Highway 1 Information |
| 03/03/16 | Email | I | CJ 03/28/16 | | | SCCRTC | Cindy | Melter | | Excursion Rail in Santa Cruz |
| 03/04/16 | Email | I | CJ 03/07/16 | | | SCCRTC | David | Eselius | | Methane Emission |
| 03/07/16 | Email | I | CJ 03/07/16 | | | SCCRTC | Bob | Landry | | Trail Now |

Correspondence Log
April 7, 2016

| Date Letter Rec'd/Sent | Format | Incoming/Outgoing | Response | TO | | | FROM | | | Subject |
|------------------------|------------|-------------------|----------------|--|---------------------------|---|--------|---------|--------------|--|
| | | | | First | Last | Organization | First | Last | Organization | |
| 03/08/16 | Memorandum | O | | Hon. William Hon. Luis Hon. Mark | Monning Alejo Stone | California Senate California Assembly California Assembly | George | Dondero | SCCRTC | Strategic Growth Council's Affordable Housing and Sustainable Communities Program |
| 03/09/16 | Email | I | CJ 03/09/16 | | | SCCRTC | Jay | Hicks | | Trail Now |
| 03/10/16 | Email | I | CJ 03/10/16 | | | SCCRTC | John | Leonard | | Trail Now |
| 03/15/16 | Email | I | CJ 03/15/16 | | | SCCRTC | David | Eselius | | SCCRTC Transportation is Few |
| 03/16/16 | Letter | O | | Kelly | McClendon | Caltrans, District 5 | George | Dondero | | Final and Progress Billing Invoice #6 for the Santa Cruz County Unified Corridor Investment Plan |
| 03/16/16 | Letter | O | | Kathy | Previsich | County of Santa Cruz | George | Dondero | SCCRTC | Reimbursement for Unified Corridor Project |
| 03/20/16 | Letter | I | | George | Dondero | SCCRTC | Susan | Wright | | Facts About the Proposed Santa Cruz County Passenger Train |
| 03/20/16 | Email | I | CJ 03/21/16 | | | SCCRTC | Jackie | Whiting | | Trail Now |

Correspondence Log
April 7, 2016

| Date Letter Rec'd/Sent | Format | Incoming/Outgoing | Response | TO | | | FROM | | | Subject |
|------------------------|--------|-------------------|----------------|-------|-----------|--|--------|------------|--|--|
| | | | | First | Last | Organization | First | Last | Organization | |
| 03/20/16 | Email | I | CJ 03/21/16 | | | SCCRTC | Lisa | Rispaud | | Trail Now |
| 03/21/16 | Letter | I | | | | Metro Board Members | Rick | Longinotti | The Campaign for Sensible Transportation | Metro Service Cuts |
| 03/21/16 | Letter | O | | John | Leopold | Santa Cruz County Board of Supervisors | Cory | Caletti | SCCRTC | Appointments to the RTC Bicycle Advisory Committee |
| 03/21/16 | Letter | O | | Ryan | Coonerty | Santa Cruz County Board of Supervisors | Cory | Caletti | SCCRTC | Appointments to the RTC Bicycle Advisory Committee |
| 03/21/16 | Letter | O | | Bruce | McPherson | Santa Cruz County Board of Supervisors | Cory | Caletti | SCCRTC | Appointments to the RTC Bicycle Advisory Committee |
| 03/21/16 | Email | I | KP 03/28/16 | | | SCCRTC | David | Sciplin | | Safe on 17 - "Simple" Traffic Fix |
| 03/21/16 | Email | I | CJ 03/22/16 | | | SCCRTC | Ben | Beames | | Golden Gate Railroad Museum |
| 03/21/16 | Email | I | CJ 03/22/16 | | | SCCRTC | Trevor | Park | | Golden Gate Railroad Museum |

Correspondence Log
April 7, 2016

| Date Letter Rec'd/Sent | Format | Incoming/Outgoing | Response | TO | | | FROM | | | Subject |
|------------------------|--------|-------------------|----------------|-------|------|--------------|-----------------|----------|--------------|-----------------------------|
| | | | | First | Last | Organization | First | Last | Organization | |
| 03/21/16 | Email | I | CJ 03/22/16 | | | SCCRTC | Paul | Nolan | | Golden Gate Railroad Museum |
| 03/21/16 | Email | I | CJ 03/22/16 | | | SCCRTC | Don | Buchholz | | Golden Gate Railroad Museum |
| 03/21/16 | Email | I | CJ 03/22/16 | | | SCCRTC | Paul | Deis | | Golden Gate Railroad Museum |
| 03/21/16 | Email | I | CJ 03/22/16 | | | SCCRTC | Millitaryforman | | | Golden Gate Railroad Museum |
| 03/21/16 | Email | I | CJ 03/22/16 | | | SCCRTC | Ben | Kletzer | | Golden Gate Railroad Museum |
| 03/22/16 | Email | I | CJ 03/22/16 | | | SCCRTC | Michael | Ninneman | | Golden Gate Railroad Museum |
| 03/22/16 | Email | I | CJ 03/22/16 | | | SCCRTC | Jesse | Costa | | Golden Gate Railroad Museum |
| 03/24/16 | Email | I | CJ 03/24/16 | | | SCCRTC | Chris | Scalzo | | Golden Gate Railroad Museum |

Correspondence Log
April 7, 2016

| Date Letter Rec'd/Sent | Format | Incoming/Outgoing | Response | TO | | | FROM | | | Subject |
|------------------------|--------|-------------------|----------------|-------|------|--------------|---------|-----------|--------------|-----------------------------|
| | | | | First | Last | Organization | First | Last | Organization | |
| 03/24/16 | Email | I | CJ 03/25/16 | | | SCCRTC | Jim | McGowan | | Golden Gate Railroad Museum |
| 03/24/16 | Email | I | CJ 03/25/16 | | | SCCRTC | Gary | Plomp | | Golden Gate Railroad Museum |
| 03/24/16 | Email | I | CJ 03/25/16 | | | SCCRTC | Robert | Hedgecock | | Golden Gate Railroad Museum |
| 03/24/16 | Email | I | CJ 03/25/16 | | | SCCRTC | William | Eldredge | | Golden Gate Railroad Museum |
| 03/24/16 | Email | I | CJ 03/25/16 | | | SCCRTC | David | Van Brink | | Golden Gate Railroad Museum |
| 03/24/16 | Email | I | CJ 03/25/16 | | | SCCRTC | Andres | Martinez | | Golden Gate Railroad Museum |
| 03/25/16 | Email | I | CJ 03/28/16 | | | SCCRTC | David | Lieby | | Golden Gate Railroad Museum |
| 03/25/16 | Email | I | CJ 03/28/16 | | | SCCRTC | Richard | Sugg | | Golden Gate Railroad Museum |

Correspondence Log
April 7, 2016

| Date Letter Rec'd/Sent | Format | Incoming/Outgoing | Response | TO | | | FROM | | | Subject |
|------------------------|--------|-------------------|----------------|-------|------|--------------|---------------|----------|--------------|-----------------------------|
| | | | | First | Last | Organization | First | Last | Organization | |
| 03/25/16 | Email | I | CJ 03/28/16 | | | SCCRTC | Paul | Iverson | | Golden Gate Railroad Museum |
| 03/25/16 | Email | I | CJ 03/28/16 | | | SCCRTC | Kristin | Tosello | | Trail Now |
| 03/25/16 | Email | I | CJ 03/28/16 | | | SCCRTC | Nathan | York | | Trail Now |
| 03/25/16 | Email | I | CJ 03/28/16 | | | SCCRTC | Rachel | Adney | | Trail Now |
| 03/26/16 | Email | I | CJ 03/28/16 | | | SCCRTC | Joseph | Morici | | Trail Now |
| 03/26/16 | Email | I | CJ 03/28/16 | | | SCCRTC | Douglas | Jones | | Trail Now |
| 03/26/16 | Email | I | CJ 03/28/16 | | | SCCRTC | Barbara | Lawrence | | Widening Highway 1 |
| 03/27/16 | Email | I | CJ 03/28/16 | | | SCCRTC | Daniel Robert | Firth | | Trail Now |

Correspondence Log
April 7, 2016

| Date Letter Rec'd/Sent | Format | Incoming/Outgoing | Response | TO | | | FROM | | | Subject |
|------------------------|--------|-------------------|----------------|-------|------|--------------|---------|----------|--------------|-----------------------------|
| | | | | First | Last | Organization | First | Last | Organization | |
| 03/28/16 | Email | I | CJ 03/29/16 | | | SCCRTC | Tom | Haid | | Trail Now |
| 03/28/16 | Email | I | CJ 03/29/16 | | | SCCRTC | Beverly | Menehan | | Trail Now |
| 03/28/16 | Email | I | CJ 03/29/16 | | | SCCRTC | Elissa | Wagner | | Shift Funds to Metro |
| 03/28/16 | Email | I | CJ 03/29/16 | | | SCCRTC | Gina | Colfer | | Trail Now |
| 03/28/16 | Email | I | CJ 03/29/16 | | | SCCRTC | Phil | Reader | | Golden Gate Railroad Museum |
| 03/29/16 | Email | I | CJ 03/30/16 | | | SCCRTC | Kathy | Sinnott | | Trail Now |
| 03/29/16 | Email | I | CJ 03/30/16 | | | SCCRTC | Teresa | Barsanti | | Trail Now |
| 03/29/16 | Email | I | CJ 03/30/16 | | | SCCRTC | Sergey | Frolov | | Trail Now |

S:\Correspondence Logs\correslogfy1516\1604.xlsx]Sheet1



SANTA CRUZ COUNTY REGIONAL TRANSPORTATION COMMISSION

1523 Pacific Ave., Santa Cruz, CA 95060-3911 • (831) 460-3200 FAX (831) 460-3215 EMAIL info@sccrtc.org

March 1, 2016

Alex Clifford
Santa Cruz Metropolitan Transit District
110 Vernon St.
Santa Cruz, CA 95060

RE: May 10, 2016 Special Meeting of the Elderly & Disabled Transportation Advisory Committee -
Santa Cruz Metro Service Reductions

Dear Mr. Clifford:

The Elderly & Disabled Transportation Advisory Committee (E&D TAC) advises the Santa Cruz County Regional Transportation Commission (RTC), the Santa Cruz Metropolitan Transit District (Metro), and other service providers on transportation needs for people with disabilities, seniors and persons with limited means.

At its meeting on February 9, 2016, the E&D TAC discussed the 2016 Meeting Calendar and meeting topics. The E&D TAC took action to schedule a special May 10, 2016 meeting and request that the Santa Cruz Metro come to present proposed transit service changes on May 10, 2016 at a public meeting of the E&D TAC. The Santa Cruz Metro website states that the initial proposal for reducing bus network/system will be presented to the Metro Board of Directors at their March 25th meeting, with further consideration at their April and May meetings with a final decision to be made at their June 24th meeting. According to the Comprehensive Operational Analysis schedule, the time frame from April through early May is to include numerous outreach opportunities for the public and advisory committees. A May 10, 2016 special meeting of the E&D TAC will allow for timely consideration of input regarding potential transit service changes from E&D TAC members and members of the public attending the E&D TAC meeting.

The purpose of this letter is to invite Santa Cruz Metro to the May 10, 2016 special meeting of the E&D TAC to provide information about the proposed Santa Cruz Metro service reductions.

Sincerely,

Veronica Elsea, Chair
Elderly and Disabled Transportation Advisory Committee

i:\e&dtac\letters-outgoing\2016\2016-feb-metro-servicereductionsdiscussion.docx



SANTA CRUZ COUNTY REGIONAL TRANSPORTATION COMMISSION

1523 Pacific Ave., Santa Cruz, CA 95060-3911 • (831) 460-3200 FAX (831) 460-3215 EMAIL info@sccrtc.org

MEMORANDUM

DATE: March 8, 2016

TO: Senator William Monning
Assemblymember Luis Alejo
Assemblymember Mark Stone

FROM: George Dondero, Executive Director
Santa Cruz County Regional Transportation Commission (SCCRTC)

RE: Strategic Growth Council's Affordable Housing and Sustainable Communities Program

On behalf of the Santa Cruz County Regional Transportation Commission (SCCRTC), we are seeking your assistance in addressing some of our concerns regarding the Strategic Growth Council's Affordable Housing and Sustainable Housing Program (AHSC), which is funded from Cap and Trade auctions. Agencies in Santa Cruz County are currently unlikely to receive funds from this and most other cap-and-trade transportation programs, but these funds are needed to help reduce greenhouse gas emissions from transportation in Santa Cruz County.

State law (SB 842) apportions 20% of Greenhouse Gas Reduction Fund annual proceeds to the AHSC Program (approximate \$400 million in FY15/16). This continuous appropriation is expected to grow each year. Unfortunately, agencies in Santa Cruz County, and the Central Coast region as a whole, will not secure any of this funding unless important changes are made to the program. The following is a summary of our concerns with the program:

1. The guidelines, application, and scoring process are overly complex. Greater simplicity and flexibility is needed in order to ensure important projects that meet the policy goals to reduce greenhouse gases while increasing affordable housing are implemented. Especially in smaller jurisdictions, the quantity of data and documentation required for applications places local agencies at a competitive disadvantage due to funding, staffing, and modeling constraints.
2. The definition of "disadvantaged" is too limiting and will result in inequitable distribution of funds. Currently, only a small section of Santa Cruz County south of Main Street in Watsonville is identified as a "disadvantaged community". However, as you are well aware, affordable housing and improved bus service is needed throughout Santa Cruz County.
3. Consistent with SB862 and SB375, there should be a strong role for regional agencies in the project selection process, especially given that all regions need funding to create more sustainable communities.
4. The match requirements are too high and prevent important projects from moving forward in areas that do not have abundant local or private funds.

We Need Your Help to Address Concerns Regarding the AHSC Program

Support geographic equity. The SGC's guidelines for this program, the CalEPA definition of "disadvantaged communities", and the cumbersome application and scoring process have resulted in most

of the funds directed to large urbanized areas. The criteria make competing for these funds almost impossible for communities in Santa Cruz County that desperately need more affordable housing and better transportation access between homes and jobs. Since all regions contribute to the cap-and-trade auctions, all regions deserve to benefit from the AHSC program - not just the larger urban areas.

We urge you to reach out to the Strategic Growth Council (SGC) and support legislation that would ensure that Cap and Trade revenues will help reduce greenhouse gas emissions from transportation in Santa Cruz County. For instance, a significant portion of the AHSC funds could be distributed via formula to ensure all regions receive a portion of the funds. An estimated \$0.10 of each gallon of gas purchased contributes to the cap-and-trade program. In 2012, retail gas sales from the Monterey Bay region totaled 272 million gallons which totals roughly \$27.2 million. Given that the AHSC Program receives 20% of the annual apportionment, this equates to the Association of Monterey Bay Area Governments (AMBAG)-region contributing \$5.4 million annually to the AHSC Program, yet prospects for the region receiving funding in the statewide competitive process are slim. In the first year of the AHSC Program, agencies in the Monterey Bay Area submitted four applications requesting \$19.7 million in AHSC funding but received \$0. This is expected to continue this year and in future years due to stringent guidelines.

Thank you for your consideration of these comments and suggestions. If you have any further questions, please contact Maura Twomey at the Association of Monterey Bay Area of Governments (AMBAG) at (831) 264-5100.

Enclosure: AHSC Fact Sheet

cc: Maura F. Twomey, Executive Director, AMBAG

-----Original Message-----

From: Kym DeWitt

Sent: Wednesday, February 24, 2016 7:06 AM

To: info@scrtc.org

Subject: Highway 1 Corridor Investment Program

Dear Kim:

We are looking at purchasing a parcel that will be affected by the next likely Tier II project, which has been identified as an auxiliary lane project between Park Ave – Bay/Porter.

We are curious what the right of way plan is and how that will affect our development of the property or if funding might be available to purchase the right of way now in coordination with our purchase.

We are also interested in what the plan is for the relocation of the businesses on that block, specifically Carpo's, Beer Thirty, Sunnyside Produce and the Fish Lady. How does the right of way work for them? Do you buy them out of their leases or only compensate the property owner.

This is of particular interest to me as I am in the process of buying in to Beer Thirty and want to know how this plan will impact that business.

I look forward to your reply.

Thank you,

Kym DeWitt

Hello Kym,

It was good speaking with you this afternoon regarding the Park Ave-to-Bay/Porter Auxiliary Lane Project and longer term Highway 1 Corridor project.

Below is my contact information. Please do not hesitate to contact me directly with any questions regarding the Highway 1 project.

Regards,
Kim

.....
Kim Shultz, Highway 1 Project Manager/Senior Planner Regional Transportation
Commission
831.460.3208

From: David Eselius
Sent: Thursday, March 03, 2016 11:43 AM
To: DOT D05Info D5
Subject: Highway 1 Information

Subject: **Highway 1 Information**

Many years ago the Santa Cruz County and cities lost the perspective of how important transportation is to its residents and prosperity. The Santa Cruz County Regional Transportation Commission (SCCRTC) leadership cabal has directed the purpose of transportation to enabling political benefits that come with access to large sums of funding.

There is a problem that the corrupt political leadership cabal also controls output of local media. When advancing critical issues of transportation, the needs of the residents of Santa Cruz County and cities become bicycle paths and trains and unproductive alternative transportation. The media needs Santa Cruz County and cities transportation facts.

One approach to correcting the situation is for the independent Caltrans to publish a "Santa Cruz County and Cities Transportation Q&A Fact Sheet."

To provide visibility for the information Fact Sheet it should be easily accessible to the public on Caltrans website.

The information Fact Sheet explains the need for Highway 1 south widening to six (6) lanes. In addition, it is necessary to explain the two (2) Aptos RR Bridges.

The information Fact Sheet should also be informative as to Highway 1 transportation needs of: Highway 1 and Highway 17 intersection, Highway 1 and Highway 9 intersection, and north. An explanation of impact of poor traffic flow upon greenhouse gases would be of interests.

From: Cruz, Susana@DOT [<mailto:susana.z.cruz@dot.ca.gov>]
Sent: Thursday, March 03, 2016 2:39 PM
To: David Eselius
Cc: Karena Pushnik; George Dondero; McClendon, Kelly D@DOT
Subject: RE: Highway 1 Information
Importance: High

Mr. Eselius,

Thank you for your comments, they will be made available to the project team. As you may know, the environmental document for the Highway 1 Corridor Improvement Program included a review period from November 4, 2015 to January 25, 2016. Caltrans and its partners are evaluating comments received from this review. Please refer to the project website at <http://sccrtc.org/projects/streets-highways/hwy1corridor/> for updates.

Susana Z. Cruz
Caltrans District 5
Public Information Officer /
Portavoz de Relaciones Públicas
para Caltrans en el Distrito 5
805. 549.3138
805.549.3326--fax

-----Original Message-----

From: Cindy Melter
Sent: Thursday, March 03, 2016 7:20 PM
To: gdondero@sccrtc.org
Cc: info@sccrtc.org; Cindy Melter
Subject: Excursion Rail in Santa Cruz

Hello George,

I was recently made aware that the SCCRTC is considering running excursion rail through neighborhoods on the West Side of Santa Cruz. While I understand that some tourists may be interested in rail excursions, I feel strongly that the inconvenience and traffic impact that such a service would cause is an unnecessary burden for the residents of Santa Cruz. From reading the SCCRTC web site, my understanding is that the charter of the commission is to improve mobility and quality of life within the county, and running excursions through our crowded intersections and neighborhoods for a small number of tourists seems contrary to that mission. If there is a large, demonstrated demand for such a tourist attraction, I would ask that you please consider starting the service on the edge of the city limits, to minimize the impact on neighborhood residents.

Thank you for your time,
Cindy Melter

Dear Ms. Melter,

Thank you for your comments. They will be made available to the Commission for their review.

Please visit the SCCRTC website at www.sccrtc.org for information on the Commission and its activities.

Thank you,

.....

Cathy Judd, Administrative Assistant, Art Exhibit Coordinator

Santa Cruz County Regional Transportation Commission

1523 Pacific Avenue | Santa Cruz, CA 95060

Main Office 831.460.3200 | Watsonville 831.460.3205

Follow our social networks for the latest RTC news

From: David Eselius
Sent: Tuesday, March 15, 2016 12:40 PM
To: SCCRTC members
Subject: SCCRTC Transportation is Few

Subject: **SCCRTC Transportation is Few**

The most important goal ignored by the Santa Cruz County Regional Transportation Commission (SCCRTC) is providing six (6) Highway 1 travel lanes from the Fish Hook (Highway 1/17 interchange) past Aptos' two (2) "rail with bicycle trail" railway bridges that cross Highway 1. The SCCRTC own the Aptos RR Bridges and therefore are obligated for their rebuilding. Estimated rebuilding cost for Aptos bridges exceeds \$100 million. There is also the SCCRTC obligation cost exceeding \$100 million of the Federal required replacement of Capitola's RR Bridge. Liability responsibility for the "rail with bicycle trail" railway is a SCCRTC liability. The SCCRTC is in very deep funding trouble, obligations, and liability issues with their "rail with bicycle trail" railway right of way.

Known by the SCCRTC members for more than 10-years are the issues of the "rail with bicycle trail" railway.

Rather than fighting reality, the most effective goal for improving people's transportation is for the SCCRTC forget about promoting the "rail with bicycle trail" and cooperatively plan transportation with Caltrans.

The most mindful improvement to global warming greenhouse gases petroleum and natural-methane gas hydrocarbons is widening Highway 1 to six (6) travel lanes from Fish Hook to past the two (2) Aptos RR Bridges. Six (6) travel lanes reduce "peak hour" traffic at all points on the state highway system. Increasing speed of "peak hour" traffic improves miles per gallon for all vehicles, which reduces hydrocarbon greenhouse gas.

Transportation hydrocarbons (petroleum and natural-methane gas) comprise 14% of 2010 global greenhouse gas (carbon and methane) emissions. Almost all (95%) of the world's transportation energy comes from petroleum-based fuels, largely gasoline and diesel. Improvement in greenhouse gas reductions "goals" are beyond the capability of all Regional Transportation Commissions.

Greenhouse gas reductions are national and international political issues involving energy corruption and saving human races. The major resource to reduce global greenhouse gases (and reduce global warming) is increasing nuclear energy reactor use, which replaces carbon fossil fuel (lignite-coal, oil, and natural-methane gas) greenhouse gas emissions.

Global carbon and methane emissions from fossil fuels have significantly increased since 1900. Since 1970, carbon dioxide emissions have increased by about 90%, with emissions from fossil fuel combustion and industrial processes contributing about 78% of the total greenhouse gas (carbon and methane) emission increase from 1970 to 2011. Agriculture, deforestation, Arctic Ocean methane hydrates, and other land use changes have been the second-largest contributors. According to 2011 global carbon dioxide emissions from fossil fuel combustion and some industrial processes, the United States contributed 16% of the emissions.

Nothing is more important to the public benefits than having SCCRTC members quit lying about their funding intentions. Since year 2000, the SCCRTC members have badly managed transportation needs, funding, and obligations.

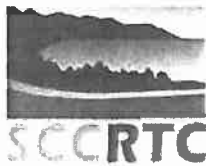
Dear Mr. Eselius,

Thank you for your comments. They will be made available to the Commission for their review.

Please visit the SCCRTC website at www.sccrtc.org for information on the Commission and its activities.

Thank you,

.....



Cathy Judd, Administrative Assistant, Art Exhibit Coordinator
Santa Cruz County Regional Transportation Commission

1523 Pacific Avenue | Santa Cruz, CA 95060
Main Office 831.460.3200 | Watsonville 831.460.3205



Follow our social networks for the latest RTC news



March 21, 2016

Dear Board Members,

We believe that the current budgetary crisis at Metro calls for our leaders to step up to the challenge of prioritizing public transit in our County. Thus far, the Metro Board's response to budgetary constraints is to create a service reduction plan. What we need is a Transit First Policy such as was adopted by the San Francisco Board of Supervisors in 1973. If our community can decide to make public transit a priority, the long-term economic, social, and environmental benefits to our community will be profound.

The following are two steps that you can take immediately in your role as elected leaders to prioritize transit and reduce the need for Metro service cuts.

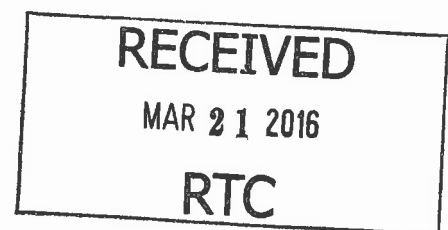
1. Increase Metro's portion of the transportation sales tax for November, 2016. The 15% of the revenue allocated to Metro is inadequate. It would reduce Metro's \$6.5 million annual deficit by \$2.2 million. To gut Metro service at the same time as allocating funds for an ineffectual widening of Highway 1 worsens social inequity in our County. This runs counter to our deeply held community value for social justice.

The EIR on the Highway 1 projects estimates that the congestion relief for the proposed TSM Alternative will be "very slight". The TSM Alternative is a much larger project than the widening project envisioned in the proposed sales tax measure. So there is no credible evidence that the smaller highway project that could be funded by the sales tax measure will have any measurable impact on traffic congestion.

2. Implement a plan for comprehensive Transportation Demand Management that includes free or discounted employee bus passes. For example, UCSC provides bus passes for employees for \$10 per month. We urge you to campaign for a similar program at all large employers in the County as well as all businesses in Downtown Santa Cruz where bus passes could be funded by the Downtown Parking District.

For CFST,

Rick Longinotti, Outreach Coordinator



From: Barbara Lawrence
Sent: Saturday, March 26, 2016 10:26 PM
To: transportation committee
Subject: Widening Highway 1

I would like to protest any widening of Highway 1 in Santa Cruz County. This is a bad idea. Congestion is already bad, inviting more cars will make it worse. Please use any monies available for mass transit both short term for the Metro and long term for light rail. Let's look ahead and find good solutions.

Please forward my comments to the RTC.

Thank you,
Barbara Lawrence

Dear Ms. Lawrence,

Thank you for your comments. They will be made available to the Commission for their review.

Please visit the SCCRTC website at www.sccrtc.org for information on the Commission and its activities.

Thank you,



Cathy Judd, Administrative Assistant, Art Exhibit Coordinator
Santa Cruz County Regional Transportation Commission
1523 Pacific Avenue | Santa Cruz, CA 95060
Main Office 831.460.3200 | Watsonville 831.460.3205



Follow our social networks for the latest RTC news

From: David Sciplin
Sent: Monday, March 21, 2016 1:39 AM
To: info@sccrtc.org
Cc: mrroadshow@mercurynews.com
Subject: Safe On 17 - "Simple" Traffic Fix

I was reading the recent article titled Highway 17 Crashes Hit a 10-year High and after numerous conversations with people that live in Santa Cruz, the fix is a simple solution; reduce the traffic over the hill. The term simple does not imply cheap or getting the Santa Cruz County Board of Supervisors to see logic. Santa Cruz is not the isolated community it once was. I'm sure the very slow moving traffic on Summer weekends that backs up from Ocean and Soquel to Hamilton Ave in San Jose is worth a serious discussion. A discussion to add a commuter train route from San Jose to Santa Cruz. The tracks exist though very old are in place.

Conversations with long time Santa Cruz resident seem to suggest certain board members want to keep the San Jose people out. Allowing them easy access will raise property values and destroy the charm of Santa Cruz. Property values are already high and the local culture hasn't changed much over the years.

Technology and building techniques have greatly improved since the tracks were last used in the 1940's and 1950's. I've driven to Santa Cruz several times a week for the past 8 years. As the heat rises the traffic gets longer. Regular commute traffic now adds 20 to 45 minutes to non-commute drives. All the reasons outlined in the article are valid. Speeds and distracted driving are big problems. The bigger problem is the only way South from San Jose is by motorized transportation. The buses on weekends don't run frequent enough to make a difference. However, one accident makes the bus irrelevant and no better than a car. I personally feel it's getting to a point where not having the discussion and developing a plan is irresponsible on many different levels.

And yes, it will cost several Billion dollars to complete. And as time passes, the price only gets higher.

Thanks for your time.

David Sciplin

Hello David Schiplin –

Your email titled [Safe of 17 – "Simple" Traffic Fix](#) was received and will be made available to the Regional Transportation Commission board for their consideration.

As you may know, a large storm in 1940 closed the over-the-hill train route of the Suntan Special trail service. That same year, the line was abandoned and the Suntan Special service resumed traveling around-the-hill through Pajaro and Watsonville. Currently the train tracks over the hill are no longer continuous and many sections have reverted to private property. The RTC analyzed this route a decade or so ago and found it unfeasible, primarily due to costs.

However, two new train services include a stop at the station at Pajaro station just over the county line. One is an extension of the Capital Corridor service between Sacramento and San Jose to Salinas. This service could be used by business or leisure travel. In addition, a new Amtrak service called the Coast Daylight is planned between Los Angeles and San Francisco with a stop at Pajaro.

The challenge is to address existing travel and plan for future mobility needs with dwindling revenues. Based on a lengthy development and community engagement process, the Regional Transportation Commission has approved a Transportation Improvement Plan (TRIP) and this summer will consider placing it on the November 2016 ballot. Included are transportation projects ranging from maintaining the existing transportation infrastructure network to safety projects to planning for mobility in the next decade. For more information, please visit the TRIP webpage: sccrtc.org/move.

Thank you.

.....



Karena Pushnik, Senior Planner/Public Information Coordinator
Santa Cruz County Regional Transportation Commission
Santa Cruz Office (main) 831.460.3210
1523 Pacific Avenue | Santa Cruz, CA 95060



Follow our social networks for the latest RTC news

From: Beverly Menehan
Sent: Monday, March 28, 2016 3:42 PM
To: john.leopold@co.santa-cruz.ca.us; info@sccrtc.org
Subject: Trail Now - Beverly Menehan

Mass transportation can be a wonderful thing, but only if it is designed and implemented correctly. I support TRAIL NOW, an organization that is promoting using our existing rail corridor for a trail, without a train. The corridor is simply not suited for efficient rail transportation. It's not correctly positioned geographically. The corridor could be used to build a pedestrian and bike trail that we can be proud of trail that our kids can enjoy, a trail designed and used by the disabled and our Senior citizens. A trail that connects our neighborhoods, not separates them. A world-class trail from Watsonville to Santa Cruz. I respectfully ask you to halt the passenger train idea. I respectfully ask you to build a trail. Now.

Sincerely,
Beverly Menehan

From: info@sccrtc.org
To: Beverly Menehan
Subject: RE: Trail Now - Beverly Menehan
Date: Tue, 29 Mar 2016 08:36:25 -0700

Dear Ms. Menehan,

Thank you for your comments. Please note that 8 miles, one quarter of the rail line length, of rail trail projects are being designed now and will be constructed within the next 2 years. Keeping options open for future consideration of potential rail service does not preclude the trail project from moving forward, as is happening now. Keeping reliable transit and travel options open for the future is sound policy and paramount to providing mobility for all, regardless of ability or travel distance.

Please read our [Frequently Asked Questions](#) for more information, community benefits, the ability to move the trail project forward while leaving rail and transit options open for the future, and for insight into the public process that led to the RTC's current policy.

Your comments will be made available to the Commission for their review. Please visit the RTC website at www.sccrtc.org for information on the Commission and its activities. Also, please indicate if you would like to be added to the RTC's rail trail e-news list.

Thank you,



Cathy Judd, Administrative Assistant, Art Exhibit Coordinator
Santa Cruz County Regional Transportation Commission
1523 Pacific Avenue | Santa Cruz, CA 95060

Main Office 831.460.3200 | Watsonville 831.460.3205

Follow our social networks for the latest RTC news

From: Beverly Menahan
Sent: Tuesday, March 29, 2016 9:15 AM
To: info@sccrtc.org
Subject: RE: Trail Now - Beverly Menahan

Dear Ms. Judd:

Thank you for the information below. Will the residents of Santa Cruz County be voting on having a train running from Watsonville to Davenport?

Sincerely,
Beverly Menahan

Hello Ms. Menahan –

The Regional Transportation Commission is putting forth a **Transportation Investment Plan**, based on the infrastructure needs identified in the long-range 2014 Regional Transportation Plan. Projects included would provide traffic relief; support and expand active transportation options; protect transportation for seniors, veterans, and people with disabilities; preserve critical existing infrastructure; plan for transportation needs of future generations; reduce reliance on Sacramento and Washington for transportation funds; and create jobs. **The plan does include \$68 million for additional sections of the Coastal Rail Trail and does not include funding for any new rail service.** This summer, the Regional Transportation Commission will make a decision about placing the Transportation Investment Plan on the November 2016 ballot.

For more information, please see the Transportation Improvement Plan (TRIP) webpage: sccrtc.org/move
Thank you.



Karena Pushnik, Senior Planner/Public Information Coordinator
Santa Cruz County Regional Transportation Commission
Santa Cruz Office (main) 831.460.3210
1523 Pacific Avenue | Santa Cruz, CA 95060



Follow our social networks for the latest RTC news

From: Elissa Wagner
Sent: Monday, March 28, 2016 3:53 PM
To: info@sccrtc.org
Subject: Shift funds to Metro

Santa Cruz County Regional Transportation Commission:

Please shift the sales tax plans for adding Hwy 1 auxiliary lanes over to the Metro. This \$100 million will go a long way to helping the bus system truly be a service to the public.

Thank you.

Elissa Wagner
Aptos, CA 95003

Dear Ms. Wagner,

Thank you for your comments. They will be made available to the Commission for their review.

Please visit the SCCRTC website at www.sccrtc.org for information on the Commission and its activities.

Thank you,



Cathy Judd, Administrative Assistant, Art Exhibit Coordinator
Santa Cruz County Regional Transportation Commission

1523 Pacific Avenue | Santa Cruz, CA 95060

Main Office 831.460.3200 | Watsonville 831.460.3205



Follow our social networks for the latest RTC news

Attached is one of 20 emails received from *Trail Now* with identical messages and responses as the wording in the email included here from Theresa A. Mantz.

The 20 emails were received from February 25, 2016 through March 30, 2016.

Trail Now emails received from:

Theresa A. Mantz

Kristen Rice

Katherine Bell

Bob Landry

Jay Hicks

John Leonard

Jackie Whiting

Lisa Rispaud

Rachel Adney

Kristen Tosello

Nathan York

Douglas Jones

Joseph Morici

Daniel Firth

Gina Colfer

Tom Haid

Beverly Menehan

Teresa Barsanti

Sergey Frolov

Kathy Sinnott

From: Theresa A Mantz
Sent: Thursday, February 25, 2016 4:00 PM
To: john.leopold@co.santa-cruz.ca.us; info@sccrtc.org
Subject: Trail Now - Theresa A Mantz

Mass transportation can be a wonderful thing, but only if it is designed and implemented correctly. I support TRAIL NOW, an organization that is promoting using our existing rail corridor for a trail, without a train. The corridor is simply not suited for efficient rail transportation. It's not correctly positioned geographically. The corridor could be used to build a pedestrian and bike trail that we can be proud of—a trail that our kids can enjoy, a trail designed and used by the disabled and our Senior citizens. A trail that connects our neighborhoods, not separates them. A world-class trail from Watsonville to Santa Cruz. I respectfully ask you to halt the passenger train idea. I respectfully ask you to build a trail. Now.

Sincerely,
Theresa A Mantz

Dear Ms. Mantz,

Thank you for your comments. Please note that 8 miles, one quarter of the rail line length, of rail trail projects are being designed now and will be constructed within the next 2 years. Keeping options open for future consideration of potential rail service does not preclude the trail project from moving forward, as is happening now. Keeping reliable transit and travel options open for the future is sound policy and paramount to providing mobility for all, regardless of ability or travel distance.

Please read our [Frequently Asked Questions](#) for more information, community benefits, the ability to move the trail project forward while leaving rail and transit options open for the future, and for insight into the public process that led to the RTC's current policy.

Your comments will be made available to the Commission for their review. Please visit the RTC website at www.sccrtc.org for information on the Commission and its activities. Also, please indicate if you would like to be added to the RTC's rail trail e-news list.

Thank you,



Cathy Judd, Administrative Assistant, Art Exhibit Coordinator
Santa Cruz County Regional Transportation Commission

1523 Pacific Avenue | Santa Cruz, CA 95060
Main Office 831.460.3200 | Watsonville 831.460.3205



Follow our social networks for the latest RTC news



Highway 1 near Big Sur in Monterey County

WINTER 2016

District Director's Report

A quarterly publication for our transportation partners



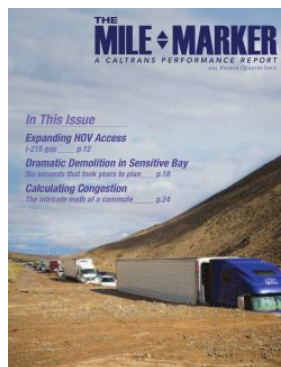
Preparing for El Niño

Maintaining rapid and appropriate response to storm damages and keeping the traveling public informed are top priorities for the Caltrans Maintenance Division. This year's efforts are a bit more extensive than during an average rainy season, according to Senior Maintenance Engineer Lance Gorman, P.E.

Highway 1 at Big Sur frequently sustains winter storm damage, especially between San Carpoforo Creek, just south of Ragged Point in San Luis Obispo County, and the Carmel River Bridge in Monterey County. This location has a high concentration of endangered and protected resources requiring multi-agency emergency preparation. Every year, Maintenance crews diligently prepare for winter storms by doing the following:

- Keeping the public informed.

- Monitoring, clearing and repairing all highway culverts and drainage structures.
- Coordinating with emergency responders to expediently open closed roadways.
- Working collaboratively with local resource agencies on specific area needs.
- Providing a uniform approach regarding maintenance forces overseeing a major damage site.



Mile Marker

Winter Edition Released

The Mile Marker: A Caltrans Performance Report is now available online. This edition features closing the carpool lane gap on Interstate 215 in Southern California, the demolition of the largest pier on the old Bay Bridge and the new 2015 Strategic Highway

Please Submit Maintenance Service Requests at the Following Link: <http://www.dot.ca.gov/hq/maint/mrsrsubmit/>

Caltrans District 5



District Director

Timothy Gubbins

Provide a safe, sustainable, integrated and efficient transportation system to enhance California's economy and livability.

Safety Plan addressing reduced fatalities and severe injuries on all public roads. For more information:

<http://www.dot.ca.gov/MileMarker/2015-4/index.html>.

Rosales leads Program Project Management



Deputy District Director
Richard Rosales

Richard Rosales is the new Deputy District Director of Program Project Management. He has served Caltrans for more than 29 years, including 15 years as a project manager in four of the District's five counties. He's experienced in encroachment permits, construction, design and hydraulics, and holds a Bachelor's degree in civil engineering from CSU-Cal Poly, Pomona. He enjoys spending time with his family, basketball, hunting, and golfing.



Highway 17 Access Management Plan

Addressing mobility, access and safety in coordination and partnership are the main goals for the multi-agency *Highway 17 Access Management Plan*. The study presents unique challenges as it considers access in a rural area carrying heavy traffic with mountainous terrain. So far, Caltrans has hosted three workshops in the communities of Happy



Valley, Loma Prieta and Scotts Valley, garnering public comment from those traversing the highway daily.

The second round of workshops, scheduled in the spring, will present potential concepts for addressing the public's identified needs and issues from the earlier sessions.

The plan focuses on preserving both the function and operation of the highway corridor and local road network, reducing conflict points, and coordinating land use



and transportation planning. Ultimately, the plan will allow Caltrans and its partners to proactively manage the highway's existing and future access from the Granite Creek Road interchange to the Santa Cruz-Santa Clara county line.

Caltrans' partners on this planning effort include Santa Cruz County Supervisor John Leopold, District 1; Santa Cruz County Supervisor Bruce McPherson, District 5; Santa Cruz County; Santa Cruz County Regional Transportation Commission; California Highway Patrol; and the City of Scotts Valley. Caltrans invites public input on this plan, which is available online at:

<http://www.ca-hwy17amp.org/>.



Concrete pavement for Highway 46

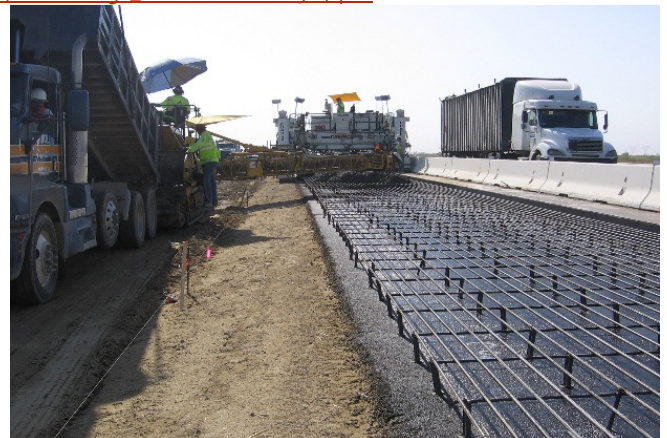
The Highway 46 East (Whitley 2B) project will widen the highway to four lanes for more than four miles near Shandon in San Luis Obispo County. This is District 5's first project to feature Continuously Reinforced Concrete Pavement, which provides the following major benefits:

- Sustainable and minimal maintenance.
- Reduced worker safety risks, future maintenance costs and traffic closures.

- Tighter transverse cracks and fewer joints, resulting in smoother pavement and reduced water penetration and potential base damage.
- Lower life cycle costs despite higher initial costs.
- Ability to handle heavier truck loading and volumes.

Concrete pavement is now being installed across the nation and around the world, according to the Federal Highway Administration. It has the potential to provide a sustainable, long-term, *zero maintenance*, service life under heavy traffic loadings and challenging environmental conditions. Currently, the \$47 million project is being advertised for construction. It is scheduled for completion in summer 2018. More information on concrete pavement is available at:

http://www.dot.ca.gov/hq/maint/Pavement/Offices/Pavement_Engineering/PDF/CRCPC-Design_Const-Guide-Jun-5-07.pdf.





PROJECT UPDATE – SANTA CRUZ COUNTY

PREPARED FOR THE APRIL 7, 2016 SANTA CRUZ COUNTY REGIONAL TRANSPORTATION COMMISSION MEETING

| CONSTRUCTION PROJECTS | | | | | | | | | | |
|-----------------------|---|--|---|---|-------------------|----------------|---------------------|-------------------------------------|--|--|
| | Project | Location | Description | Construction Timeline | Construction Cost | Funding Source | Implementing Agency | Project Manager (Resident Engineer) | Contractor | Comments |
| 1. | Hwy. 1/17 Shoulder Widening (1A870) | On Route 1 from the NB merge with Route 17 to the NB off-ramp to Ocean Street (PM 16.9-17.2) | Extend the SR 1 NB #1 lane to extend the merge with the SR 17 SB #2 lane | January 4, 2016-Summer 2017 | \$1.1 Million | SHOPP | Caltrans | Luis Duazo (KB) | Granite Construction, Watsonville, CA | Phase 1 complete, Phase 2 in progress with 2 lanes on NB Hwy 1 (Fishhook) and 1 lane on SB Hwy 17. |
| 2. | Hwy. 1 North County Pavement Preservation and Rumble Strips (1C8604) | Near City of Santa Cruz from Western Drive to San Mateo C/L (PM 20.2-37.4) | Pavement preservation and install rumble strips | May 13, 2015 – March 31, 2016 | \$10.7 Million | SHOPP | Caltrans | Doug Hessing (PD) | Granite Construction, Watsonville, CA | Construction expected to be completed and accepted by March 31. |
| 3. | Hwy. 9 Pollution Source Control (0Q5904) | At and near Boulder Creek at various locations from 0.9 mile south of Glengarry Rd to 0.2 mile north of McGaffigan Mill Rd (PM 3.7-18.7) | Construct retaining wall & viaduct structure. Replace drainage pipes. Rehab maintenance turnaround. | Winter 2014-September 5, 2015 (One year plant establishment starting Nov. 2015) | \$1.8 Million | SHOPP | Caltrans | Doug Hessing (KB) | Granite Rock Company, San Jose, CA | Construction completed on Sept. 5, 2015. Plant establishment beginning in November for one year. |
| 4. | Monterey-Santa Cruz ADA (0R5104) | On SR 1 and SR 9 at various locations (other locations in Monterey County) | Construct curb ramps, sidewalks, and modify signal and lightings | Fall 2015 – Fall 2016 | \$1.2 Million | SHOPP | Caltrans | Kathy DiGrazia (BR) | Pacific Infrastructure, Vacaville, CA | SCR County locations: SR 1 at Freedom Blvd SR 1 at Graham Hill Rd SR 9 at SLV High School |
| 5. | Hwy. 17 Shoulder Widening and Concrete Guardrail (0T9804) | In Santa Cruz County near Scotts Valley from 0.4 mile South of Sugarloaf to 0.1 mile South of Laurel Road (PM 8.3-9.4) | Shoulder widening and concrete guardrail | Winter 2015-Summer 2017 | \$6.2 Million | SHOPP | Caltrans | Doug Hessing (DP) | Granite Construction Inc. of Watsonville | Construction scheduled to begin mid-May. Work will consist of shoulder widening and drainage improvements. |



PROJECT UPDATE – SANTA CRUZ COUNTY

PREPARED FOR THE APRIL 7, 2016 SANTA CRUZ COUNTY REGIONAL TRANSPORTATION COMMISSION MEETING

CONSTRUCTION PROJECTS (CONT.)

| | Project | Location | Description | Construction Timeline | Construction Cost | Funding Source | Implementing Agency | Project Manager (Resident Engineer) | Contractor | Comments |
|----|---|--|---------------------------------------|-----------------------|-------------------|----------------|---------------------|-------------------------------------|--------------------------------------|---|
| 6. | Hwy. 129 Curve Realignment (0T540) | East of Watsonville between 0.4 mile west of Old Chittenden Rd and 0.1 mile east of Chittenden underpass (PM 9.5-10.0) | Curve realignment | Spring, 2016 | \$5 Million | SHOPP | Caltrans | Doug Hessing (KB) | Graniterock Company, Watsonville, CA | Most of the roadwork will be done with one-way signal traffic control with about 7-10 days of full closures at the end of the project. Construction to begin April 4. |
| 7. | Hwy. 152 Accessible Pedestrian Signals (1G280) | 14 intersections in Santa Cruz County | Install accessible pedestrian signals | Winter, 2016 | \$1.3 Million | SHOPP | Caltrans | Kathy DiGrazia (LB) | PTM Engineering, Riverside, CA | Equipment order pending. Locations: SR 1 in Santa Cruz (3) SR 17 in Scotts Valley (2) SR 129 in Watsonville (3) SR 152 in Watsonville (6) |

PROJECTS IN DEVELOPMENT

| | Project | Location | Description | Construction Timeline | Estimated Construction Cost | Funding Source | Implementing Agency | Project Manager | Phase | Comments |
|----|--|---|---|-----------------------|-----------------------------|----------------|---------------------|-----------------|--|---|
| 8. | Hwy. 129/Carlton Rd Intersection Improvements (1F350) | Near Watsonville from 0.1 mile west to 0.2 mile east of Carlton Rd (PM 3.2-3.5) | Construct accel/decel and 2-way left turn lanes | 2018 | \$2 Million | SHOPP | Caltrans | Doug Hessing | Project Approval & Env. Document (PA&ED) | On schedule for completion of Environmental Document in July, 2016. |
| 9. | Hwy. 152 ADA (1E020) | Near Watsonville from Wagner Avenue to south of Holohan Road (PM 1.3-R2.0) | ADA compliance (install sidewalks) | 2018 | \$1.9 Million | SHOPP | Caltrans | Kathy DiGrazia | PS&E/ROW | Environmental Document finalized in February, 2016. |

Agenda: April 7, 2016

To: Santa Cruz County Regional Transportation Commission
From: Cory Caletti, Senior Transportation Planner
Re: City of Watsonville Rail Trail Project Update

RECOMMENDATION

Staff recommends that the Regional Transportation Commission (RTC) receive a presentation from the City of Watsonville on preliminary designs for the 1.2 mile rail trail project being developed and provide feedback.

BACKGROUND

At its November 2013 meeting, the RTC adopted a Master Plan for the Monterey Bay Sanctuary Scenic Trail (MBSST) Network and certified the final Environmental Impact Report. The Master Plan defines the “coastal rail trail,” a proposed bicycle and pedestrian trail adjacent to the tracks on the 32-mile Santa Cruz branch rail line right-of-way, as the spine of a broader network of trails that will provide connections to activity centers, coastal access points, and other key destinations. The Master Plan has since received four awards for planning excellence and has been adopted by all the local jurisdictions through which the project traverses.

Since that time, three significant additional projects have been funded:

- 1) City of Santa Cruz from Natural Bridges Drive to Pacific Ave - The \$5.3M project will develop a 2.1-mile bicycle and pedestrian rail trail. Funding was committed by the RTC (\$4,060,000), the City of Santa Cruz (\$1,080,000), the California Coastal Conservancy through the RTC (\$50,000), and collectively Ecology Action, Friends of the Rail and Trail, and Bike Santa Cruz County committed \$100,000.
- **The City of Watsonville’s** 1.2 mile rail trail from Walker Street to Lee Road is funded by the RTC (\$1,040,000), the Land Trust of Santa Cruz County (\$335,000), the state Active Transportation Program (\$600,000), the City of Watsonville (\$64,000) and Friends of the Rail and Trail (\$11,000).
- A 5-mile north coast project received \$6,300,000 in Federal Access Lands Program (FLAP) funds and will be implemented by Federal Highway Administration’s **Central Federal Lands division**. Additional funding was provided by the Land Trust of Santa Cruz County (\$3,300,000) and the California Coastal Conservancy (\$950,000).

In total, 8 miles of rail trail projects have been funded and are being developed with construction scheduled for 2017 and 2018.

In February, 2016, the RTC received a presentation of preliminary designs for the City of Santa Cruz rail trail project. The RTC also received a status report on other projects and authorized entering into contracts or agreements and amendments as necessary to implement current and future rail trail projects.

DISCUSSION

The City of Watsonville has been working closely with the RTC to design a 1.2-mile bicycle and pedestrian rail trail project from Lee Road to Walker Street as defined in the Monterey Bay Sanctuary Scenic Trail Network Master Plan. The project is identified in the Master Plan as Segment 18 of the 20-segment project. Funding was secured such that there are two parts to the project.

On December 5, 2013, the Santa Cruz County Regional Transportation Commission (RTC) awarded Watsonville \$1,040,000 in State Transportation Improvement Program funds to develop a 0.8-mile length of Segment 18 that extends from the City limits at Lee Road to the Watsonville Slough trail head and is referred to as the Rail Trail Lee Road project. The overall project cost is \$1,300,000. The City also secured a \$260,000 donation from the Land Trust of Santa Cruz County.

On October 21, 2015, the State awarded Watsonville an Active Transportation Program (ATP) grant to develop the remaining 0.4 miles of Segment 18 from the Watsonville Slough trail head to Walker Street and is known as the Rail Trail Walker Street project. The grant included \$600,000 for construction. The overall project cost for the trail was \$750,000 of which \$150,000 will be utilized for safety training for pedestrians and bicyclists in the surrounding area to be performed by the Santa Cruz County Health Services Agency. (The \$150,000 is not included in the RTC reporting of the project total since it accounts for ancillary education programs and not the trail itself.) The City also secured a \$75,000 donation from the Land Trust of Santa Cruz County; \$11,000 in donations collected by Ecology Action; and will contribute \$64,000 toward the project.

The City hopes to construct the entirety of the project at one time. To facilitate that objective, the City combined the two parts for preparation of the environmental document and the preliminary plans.

The trail is being designed as a 12-foot wide, paved pedestrian and bike trail with **the minimum 8'6" setback the length of the project.** The City developed preliminary plans and held an open house for public review and comment on Monday, 03/28/16. The preliminary design shall be presented to the Commission by City of Watsonville Principal Engineer Murray Fontes.

Staff recommends that the RTC receive a presentation on the City of Watsonville rail trail project.

SUMMARY

The City of Watsonville is implementing a 1.2-mile bicycle pedestrian rail trail project, from Lee Road to Walker Street, as defined in the Monterey Bay Sanctuary Scenic Trail Network Master Plan. Preliminary designs for the 12-foot paved path are available and staff recommends that the RTC receives a presentation of the City of Watsonville project.

TO: Regional Transportation Commission

FROM: Grace Blakeslee, Transportation Planner

RE: Elderly & Disabled Transportation Advisory Committee's-
Committee Report - 2012-2015

RECOMMENDATIONS

The Elderly & Disabled Transportation Advisory Committee and staff recommend that the Commission accept the Committee Report- 2012-2015 ([Attachment 1](#)) for the Elderly & Disabled Transportation Advisory Committee.

BACKGROUND

The Elderly and Disabled Transportation Advisory Committee (E&D TAC) has a host of responsibilities, which consist of monitoring specialized transportation needs in Santa Cruz County, providing input and advocacy for specialized transportation projects, funding oversight, developing the list of unmet needs, and internal committee functions such as maintaining membership, encouraging broad participation, and chair/vice chair elections. A Committee Report outlines the E&D TAC's accomplishments and activities.

DISCUSSION

The E&D TAC effectively participated in activities related to transportation services and planning, public information, and funding oversight during the four- year period. Some accomplishments from the Committee Report- 2012-2015 include:

- Identified the most serious unmet paratransit and transit needs in Santa Cruz County;
- Supported pedestrian improvements in Watsonville, Aptos, Scotts Valley, Santa Cruz and San Lorenzo Valley and development of a multi-use trail network;
- Conducted extensive outreach to inform the public about what makes a good sidewalk and maintenance responsibilities;
- Created and distributed 'What Pedestrian and Motorists Want Each other to Know' brochure;
- Analyzed Transportation Development Act claims for the Santa Cruz Metropolitan Transit District, Community Bridges/Lift Line and the Volunteer Center;
- Conducted extensive outreach to ensure broad representation and to recruit Committee members; and,
- Examined the benefits of transportation projects for seniors and people with disabilities.

The E&D TAC and staff recommend that RTC receive the 2012-2015 Committee Report from its Elderly & Disabled Transportation Advisory Committee.

SUMMARY

As a way to provide a snapshot to the RTC of the activities and accomplishments of its advisory committees, Committee Reports are prepared. Attached is the Elderly and Disabled Transportation Advisory Committee's report highlighting the committee's actions from 2012-2015.

Attachments:

1: Elderly & Disabled Transportation Advisory Committee – 2012-2015 Report

I:\E&DTAC\ANNREPOR\2015\2015Rep-RTC-Apr16.docx



Santa Cruz County Regional Transportation Commission
**The Santa Cruz County Elderly & Disabled
 Transportation Advisory Committee**

A Review of the Work Accomplished (2012-2015)

The Elderly & Disabled Transportation Advisory Committee's Regional Role

The Santa Cruz County Regional Transportation Commission's Elderly & Disabled Transportation Advisory Committee -- also serving as the state-designated Social Services Transportation Advisory Council -- is a group of members of the public, transportation providers, and social service agency representatives who meet every two months to determine planning, funding, and policy for specialized transportation to serve Santa Cruz County's seniors and people with physical, mental and/or economic disabilities.

One of the essential functions of this advisory committee is to provide broad and significant insight to the Regional Transportation Commission, the Santa Cruz Metropolitan Transit District and Community Bridges about the transportation needs, policies and issues affecting seniors and individuals living with disabilities. Meeting the specialized transportation needs of diverse populations in a mixed rural and urban county can be extremely challenging, and the Elderly & Disabled Transportation Advisory Committee is actively engaged in monitoring existing services, from public and non-profit to private, for-profit services.

Members of this committee have direct and personal experience with quality-of-life concerns related to maintaining full and independent lives through access to mobility assistance. Members are the voice for the approximately 10% of the population that are seniors of which approximately half are disabled and over 7% are below the poverty line. The population of seniors in Santa Cruz County will grow to make up close to 20% of the population by 2035. As this population group continues to grow, planning activities for specialized transportation services throughout the region will become even more important.

Among the specialized transportation service providers in Santa Cruz County, there are: the Americans With Disabilities Act -Mandated Paratransit program; ParaCruz, operated by Metro; the countywide Lift Line transportation by Community Bridges - the designated Consolidated Transportation Services Agency; various private operators, including taxi companies and for-profit medical transport service; and a collection of informal and volunteer efforts to provide vital and personal transportation services to individuals whose mobility needs would otherwise be unmet.



Geographical information for each project or action is noted as follows: A – All the county, S–Santa Cruz, V–Scotts Valley, C–Capitola, W–Watsonville, I–unincorporated county areas.

Transportation Services & Projects

The Elderly & Disabled Transportation Advisory Committee identified the most serious unmet paratransit and transit needs in Santa Cruz County and communicated priorities to the public and decision makers. (A) The Committee identified the need for:

- ❖ Fixed-route transit and paratransit service to areas with high concentrations of seniors, disabled and low income individuals, particularly in south county;
- ❖ Increase frequency and span of transit service in densely populated areas;
- ❖ Paratransit service to areas outside ADA mandated paratransit service area;
- ❖ Sidewalks and pedestrian improvements that provide universal access between transit stops and activity centers;
- ❖ Easy to understand information about transit and specialized transportation services; and,
- ❖ Bus stop improvements.



The Committee supported pedestrian improvements in Watsonville, Aptos, Scotts Valley, Santa Cruz, San Lorenzo Valley to repair and install sidewalks, curb cuts, crosswalks, bus stops, and construct dedicated pedestrian and bicycles paths. (S,V,W,I)

The Committee provided input to the development of the Monterey Bay Scenic Sanctuary Trail to support universal access to open spaces and separated pedestrian and bicycle facilities. (S, I)

The Committee participated in the design of the Santa Cruz Metro Pacific Station to encourage the use of design features that create convenient and comfortable access for seniors and people with disabilities. (S)

The Committee endorsed new paratransit vehicles for use by Santa Cruz Metro to support comfortable and convenient transport for riders. (A)

The Committee reviewed the Metro's ParaCruz Customer Guide & Fixed Route Discount Fare Program to attest to the experience of seniors and people with disabilities using transit services. (A)

Public Information & Outreach

The Pedestrian Safety Work Group, a subcommittee of the E&D TAC, conducted extensive outreach activities to inform the public about what makes good sidewalks, maintenance responsibilities, and pedestrian and motorist safety. Local radio programs aired a public service announcement, developed by the Pedestrian Safety Workgroup, to promote safe travel for all users and highlight the needs of elderly and disabled pedestrians. (A)



The Pedestrian Safety Work Group wrote, released and distributed copies of the [‘What Pedestrians and Motorists Want Each Other to Know’](#) brochure in English and Spanish. New partnerships with stakeholders and community groups were developed through this effort. Caltrans Accessibility Advisory Committee recognized the brochure and the report has been a model for similar efforts throughout California. (A)

The Pedestrian Safety Work Group informed the public about how to report a sidewalk hazard using the [RTC’s Hazard Report Form](#). Posters identifying the RTC’s hazard report form were designed and placed on Santa Cruz Metro buses and paratransit vehicles. (A)

The Committee worked with the Community Traffic Safety Coalition’s [Bicycle and Pedestrian Construction Safety Guidelines](#) to protect all users during construction by providing a list of construction hazards and recommended safety and access measures. The Committee emphasized the needs of those with disabilities who must navigate through construction zones. (A)

The Committee conveyed ideas to the Open Streets Event coordinator to increase participation of seniors and people living with disabilities in events that foster individual and community health through the creative use of public spaces. (S, W)

The Committee provided input on the Monterey Bay Public Participation Plan which includes outreach strategies to encourage broad and effective public input for use by transportation agencies in the Monterey Bay Area. (A)



The Committee assisted with the **Bus Use of Aging and Disabled Adults and Transit Ridership Survey** in order to garner broad participation and effective data collection. The survey findings suggest that older adults may prefer the use of a car, yet a significant portion still utilize the bus to fulfill some travel needs. Carrying packages, weather, locations of transit service, and distances to bus stops were barriers to transit use. (A)

The Committee conducted extensive outreach to recruit new and fill vacant positions. The RTC seeks a broad representation of people from different geographic locations in Santa Cruz County to advise on transportation policy, planning and funding. (A)

Transportation Planning

The Committee engaged in long range transportation planning to ensure the benefits and impacts of transportation projects on seniors and people with disabilities were effectively measured, and priority projects included. (A)

The Committee engaged in short range transit planning to identify transit and paratransit priorities as part of development of **Santa Cruz Metro’s Short Range Transit Plan**. (A)

The Pedestrian Safety Work Group developed the “[Improving the Safety and Accessibility of Sidewalks in Santa Cruz County](#)” report. The comprehensive report reviewed local jurisdiction and property owner sidewalk responsibilities and practices. The Pedestrian Safety Work Group presented the report to the Watsonville City Council and was recognized by California Walks.

The Committee reviewed the Monterey Bay Area Complete Streets Guidebook to establish complete street project designs that take into consideration the use of transportation facilities by seniors and people living with disabilities, with special attention given to pedestrian crossings. (A)

The Committee participated in the development of the Monterey Bay Coordinated Public Transit and Human Services Plan to identify the availability of services that meet the needs of Santa Cruz County seniors and people with disabilities in Santa Cruz, San Benito and Monterey Counties. (A)

The Committee provided input on rail transit service as part of development of the RTC Rail Feasibility Study to communicate the perspective of seniors and people living with disabilities, including the importance of providing transportation connections to and from rail transit stations. (A)

The Committee monitored the RTC’s State and Federal Legislative Program to identify areas of critical concern for seniors and people living with disabilities in Santa Cruz County in the areas of transportation funding and project design.

The Committee participated in the statewide discussion regarding Class IV bikeway design as part of the Caltrans committee, insuring a voice for pedestrians with disabilities who may interact with these bikeways. (A)

Funding Oversight



Members approved Transportation Development Act claims for transit and paratransit services including, but not limited to: rides to medical appointments, Meals on Wheels, senior dining centers, taxi voucher programs and other paratransit services provided by the Volunteer Center, Community Bridges and the Santa Cruz Metro. The claims were analyzed in detail including cost per ride, number of rides, the degree to which unmet needs were addressed, and cost efficiencies. (A)

Members approved Transportation Development Act claims for pedestrian projects located in the cities and county unincorporated area. Project designs were carefully reviewed to ensure convenient and comfortable access for seniors and people living with disabilities. (A)

The Committee carefully reviewed and scored three local Section 5310 grant applications to forward the most competitive local projects to the California Department of Transportation to be considered for funding. Applications for two new minivans and mobile commuters, four paratransit buses, door-to-door same day paratransit services, and accessible transportation services to a Boulder Creek camp and other Monterey Bay Area recreational facilities were reviewed. Funding was awarded to all, but three paratransit buses. (A)

Members provided recommendations about the highest priority projects to receive funding for grants from the Active Transportation Program, the Regional Surface Transportation Program, and potential new local funding sources to make certain the transportation needs of seniors and people living with disabilities were considered. (A)

The Committee communicated how changes to funding for paratransit and transit services would impact seniors and people living with disabilities as part of Santa Cruz Metro's discussion about how to address its structural deficit.

Internal Committee Issues

Members elected John Daugherty (Metro), Michael Molesky (Social Service Provider-County) and Veronica Elsea (Third District) to serve as the Committee Chairpersons during the 2012 to 2015 time frame. Ms. Elsea also served as the Chair of the E&D TAC's Pedestrian Safety Work Group from 2012-2015. Officers are elected annually.

One or two meetings were held annually in mid-county/Aptos and Watsonville at accessible facilities on a bus line.

Karena Pushnik was appreciated for her years as RTC Staff to the E&D TAC. **Grace Blakeslee** was assigned as the new RTC Staff to the E&D TAC.

Members completed a survey to evaluate the Committee structure and effectiveness. The survey findings resulted in improvements to how agenda materials are presented, increased awareness of membership activities, and recommendations to increase engagement with RTC Commissioners and the public.

Santa Cruz County Regional Transportation Commission

1523 Pacific Avenue, Santa Cruz, CA 95060-3911

* Tel: (831) 460-3200 * Website: www.sccrtc.org

AGENDA: April 7, 2016

TO: Regional Transportation Commission (RTC)
FROM: Grace Blakeslee, Transportation Planner
RE: User Oriented Transit Planning Project

RECOMMENDATIONS

Staff recommends that the Regional Transportation Commission (RTC):

1. Adopt a resolution ([Attachment 1](#)) authorizing the Executive Director to execute a Memorandum of Understanding between RTC and Santa Cruz Metro to support the development of the User Oriented Transit Planning Project and reimburse Santa Cruz Metro for up to \$10,000 for its advisory work;
 2. Release a Request for Proposals for consultant services to advise RTC in the design of the User Oriented Transit Planning Project to ensure consistency with industry standards and to complete an analysis of project effectiveness; and,
 3. Adopt a resolution ([Attachment 1](#)) authorizing the Executive Director to negotiate and execute an agreement between RTC and the selected consultant to advise on the User Oriented Transit Planning Project design and to complete an analysis of project effectiveness.
-

BACKGROUND

The Santa Cruz County Regional Transportation Commission (RTC) was awarded a Transit Planning for Sustainable Communities grant of \$150,000 from Caltrans to conduct a User-Oriented Transit Travel Planning Project to test an individualized marketing program in Santa Cruz County that encourages solo-drivers to switch transportation modes, with a special emphasis on attracting new transit riders. The project will employ best practices for applying individualized marketing techniques to travel behavior **and follow guidance from Federal Transit Administration's Individualized Marketing Project Demonstration Program.**

DISCUSSION

The purpose of the User Oriented Transit Planning Project is to test the effect of individualized marketing on **changing an individual's transportation choice from solo-driving to transit, bicycling, walking or carpooling in Santa Cruz County.** The User Oriented Transit Planning Project will apply individualized marketing techniques to: identify people who are interested in making changes in their travel behavior, provide interested individuals with customized information about travel choices; and encourage participants to make a change from driving to transit, bicycling, walking or carpooling. The project is designed to identify tools that are successful in increasing the use of

alternative modes of transportation, especially transit, by Santa Cruz County residents. The User Oriented Transit Planning Project will provide the information necessary to understand if individualized marketing is an effective strategy for advancing Santa Cruz County's regional transportation goals, including a reduction in vehicle miles traveled and greenhouse gases and, a shift from driving to alternative modes.

The User Oriented Transit Planning Project involves:

- selecting neighborhoods for testing individualized marketing techniques;
- developing customized materials to provide information about access to transit, bicycling and walking services in each targeted neighborhood;
- identifying individuals most likely to change behavior through expressed interest;
- conducting personalized outreach to interested individuals;
- collecting before and after data to measure the change in the frequency participants use transportation modes, and, awareness and attitudes about alternatives to solo-driving;
- **using performance measures to analyze the project's effectiveness;** and,
- documenting the project activities and results.

The project final report will document the **pilot project's** research, methodology, materials, techniques and outcomes. A toolkit for conducting a full-scale individualized transit marketing program in Santa Cruz County will be developed based on the project findings.

RTC staff is proposing to conduct outreach to households within ¼ mile of transit corridors in two neighborhoods in Santa Cruz County. One neighborhood proposed for targeted outreach includes the 2,300 households within ¼ mile of Soquel Avenue between Ocean Street and Water Street. The other neighborhood proposed for targeted outreach includes the 2,600 households within ¼ mile of Freedom Boulevard between South Green Valley Boulevard and Main Street. Both neighborhoods contain a mix of single-family housing and multi-family housing and are located near commercial corridors.

Memorandum of Understanding

The RTC will work in partnership with the Santa Cruz Metro to develop the User Oriented Transit Travel Planning Project. As the transit service provider for Santa Cruz County, the Santa Cruz Metro will advise the RTC on project design, customized outreach materials, and review the project findings. As an incentive to encourage solo-drivers to shift to transit, Santa Cruz Metro will provide RTC with free transit day passes for participants interested in transit. Ten thousand dollars is included in the project budget for Santa Cruz Metro to complete these activities. **RTC staff recommends that the RTC adopt a resolution (Attachment 1) authorizing the Executive Director to execute an agreement between RTC and Santa Cruz Metro to support development of the User Oriented Transit Planning Project.** The Santa Cruz Metro Board of Directors is scheduled to consider entering into this Memorandum of Understanding with the RTC at their April 22, 2016 meeting.

Request for Proposals

RTC staff recommends that the RTC engage a qualified consultant experienced in individualized marketing programs and techniques to advise RTC on the project

methodology including: market segmentation, outreach strategies, survey design and customer resource management, to ensure consistency with industry practice and standards. The qualified consultant will also be responsible for analyzing the project effectiveness including participation rates, data collected from project surveys, and resource requirements. Up to \$20,000 is included in the project budget for consultant services to complete these activities.

Pending RTC approval, a request for proposals for consultant services to support development of the User Oriented Transit Planning Project will be released on April 8, 2016. Proposals will be due May 3, 2016 and a contract initiated by June 2016. The request for proposals will be noticed on the RTC website, on RFPdb.com, and emailed to consultants in the RTC mailing database and the Caltrans Disadvantaged Business Enterprise database.

RTC staff recommends that the RTC release a request for proposals for consultant services to support development of the User Oriented Transit Planning Project and adopt a resolution (Attachment 1) authorizing the Executive Director to negotiate and enter into a consultant agreement in an amount not to exceed \$20,000 with the contractor that presents the proposal that, in the opinion of the RTC staff, is the most advantageous to the RTC based on the evaluation criteria. Proposals will be evaluated on the technical ability to complete tasks, experience with similar projects, qualifications of the proposed team, and cost to complete the work.

Project Schedule

- Project Initiation & Design: February-March 2016
- Project Development: April-June 2016
- Procurement for Professional Services: April-May 2016
- Stakeholder Meeting #1: June 2016
- Project Implementation: August 2016-November 2016
- Project Analysis: December 2016-January 2017
- Project Report and Toolkit Development: February 2017-May 2017
- Stakeholder Meeting #2, Review Draft Report and Toolkit: March 2017

SUMMARY

The RTC was awarded a Transit Planning for Sustainable Communities grant of \$150,000 from Caltrans to conduct a User Oriented Transit Travel Planning Project to test an individualized marketing program in Santa Cruz County that encourages solo-drivers to switch transportation modes. Staff recommends that the RTC enter into a memorandum of understanding with the Santa Cruz Metro, release a request for proposals for consultant services and authorize the Executive Director to award a consultant contract to support development of the User Oriented Transit Planning Project.

Attachment 1: Resolution Authorizing the Executive Director to Enter into a Memorandum of Understanding with Santa Cruz Metro and to Enter into a Consultant Agreement

RESOLUTION NO.

Adopted by the Santa Cruz County Regional Transportation Commission
on the date of April 7, 2016
on the motion of Commissioner
duly seconded by Commissioner

A RESOLUTION AUTHORIZING THE EXECUTIVE DIRECTOR TO ENTER INTO A CONTRACT FOR CONSULTANT SERVICES AND APPROVE AN AGREEMENT WITH THE SANTA CRUZ METROPOLITAN TRANSIT DISTRICT (METRO) TO SUPPORT DEVELOPMENT OF THE USER ORIENTED TRANSIT PLANNING PROJECT

WHEREAS, the Regional Transportation Commission (RTC) is working to increase the number of transit, bicycle, walking and carpool trips, reduce vehicle miles traveled and reduce greenhouse gas emissions;

WHEREAS, Caltrans has awarded RTC an FTA 5304 Transit Planning for Sustainable Communities grant in the amount of \$150,000 for a User Oriented Transit Planning Project;

WHEREAS, individualized marketing of transportation options is a strategy to shift automobile trips to trips by transit, bicycling, walking and carpooling;

WHEREAS, the User Oriented Transit Planning Project will plan, develop and test an individualized marketing program for Santa Cruz County that encourages solo-drivers to switch modes with a special emphasis on attracting new transit riders;

WHEREAS, the Santa Cruz METRO is the public bus transit service provider in Santa Cruz County;

WHEREAS, the Santa Cruz METRO and the RTC have a cooperative working relationship planning and implementing transportation projects and programs in Santa Cruz County;

WHEREAS, the RTC is the lead implementing agency responsible for managing the contractual and administrative aspects of the agreements with the project consultant;

WHEREAS, a consultant team with experience with individualized marketing will advise the RTC on methodology used to implement the User Oriented Transit Planning Project in Santa Cruz County and analyzing the project effectiveness; and,

WHEREAS, the evaluation team will review the proposals and identify the contractor that presents the proposal that, in the opinion of the RTC staff, is the most advantageous to the RTC based on the evaluation criteria.

NOW BE IT RESOLVED BY THE SANTA CRUZ COUNTY REGIONAL TRANSPORTATION COMMISSION:

1. The RTC Executive Director is hereby authorized to enter into an Agreement with Santa Cruz Metropolitan Transit District (METRO) in order to distribute up to \$10,000 of the FTA 5304 grant funds to Santa Cruz METRO on a reimbursement basis for its participation in development of this project.
2. The Executive Director is authorized to negotiate and enter into a contract in an amount not to exceed \$20,000 to support development of the User Oriented Transit Planning Project with the

firm that presents the proposal that, in the opinion of the RTC staff, is the most advantageous to the RTC based on the evaluation criteria.

3. The Executive Director is authorized to negotiate and execute amendments to the agreements identified above provided that the amendments are within the intended scope of services to complete the project and are consistent with the adopted RTC budget.

AYES: COMMISSIONERS

NOES: COMMISSIONERS

ABSENT: COMMISSIONERS

ABSTAIN: COMMISSIONERS

Don Lane, Chair

ATTEST:

George Dondero, Secretary

Distribution: RTC Fiscal
RTC User Oriented Transit Planning Project Contract Manager

TO: Regional Transportation Commission

FROM: Kim Shultz, Senior Transportation Planner

RE: Highway 1 Corridor Environmental Document - Status Report

RECOMMENDATIONS

Staff recommends that the Regional Transportation Commission (RTC) receive information on the status of the Draft Tiered Environmental Document for the Highway 1 Corridor Investment Program.

BACKGROUND

The Draft Tiered Environmental Document for the Highway 1 Corridor Investment Program was released for public comment on November 4, 2015. The draft environmental document included a program level vision for the long term improvement of Highway 1, between Morrissey Boulevard and San Andreas/Larkin Valley Road (Tier I project), and project level analysis for the construction of auxiliary lanes between 41st Avenue and Soquel Drive and a bike/pedestrian overcrossing at Chanticleer Drive (Tier II project). The RTC conducted a comprehensive outreach effort to notify the public as to the availability of the draft environmental document and technical studies through online social media, RTC's webpage, email messages to interested parties, direct mailers to residents and businesses in proximity of the Tier 2 project area, and a public meeting to highlight the findings of the environmental studies. The public comment period for the draft environmental document was closed on Monday, January 25, 2016.

RTC's FY 2014-2015 budget provided funds carried into the current fiscal year to conduct the activities identified above.

DISCUSSION

Caltrans received a total of 263 letters, emails, and recorded comments from individuals, organizations, and public agencies on the draft environmental document. This correspondence generated over 900 separate comments for which responses are required as part of the final environmental document. The consultant team has begun the process to document each of the comments received and categorize those comments by subject area. Caltrans, together with staff and the consultant team have initiated the process to review all the comments received to identify the appropriate response to each.

In anticipation of this work, the FY 2015-2016 budget included a limited amount of funds to begin the work to respond to public comments, updating the technical studies, and advance consultation with state and federal resource agencies. To allow work to proceed in a timely manner staff has negotiated a \$250,000 contract amendment authorized in the FY 2015-2016 budget. While the final scope of work to complete the environmental document is not yet determined, the project team has identified a need to update the air quality, natural environment, and traffic operations studies. Update of these studies is required due to changes in regulatory guidelines and requirements since review of the draft environmental analysis began in fall 2014 and to properly respond to the comments received on the draft studies.

The amended scope also includes funds for preparation of a Biological Assessment of the Tier 2 project to the Federal Fish and Wildlife Service (USFWS) and the National Oceanic Administration National Marine Fisheries Service (NOAA Fisheries). Consultation with the federal resource agencies currently takes 135 days so it is important to begin this process as soon as possible based on the most current field observations of biotic activity to avoid delays in the environmental review process.

The current contract amendment is expected to maintain progress in responding to public comments and updating technical studies through July 2016, however, additional funds will be needed to complete the final environmental document. Once a work scope and budget to complete the Final Environmental Document is determined, staff will bring a contract and budget amendment to the RTC for approval. The current project schedule anticipates completion of the Final Environmental Document in Summer 2017.

SUMMARY

Caltrans received over 900 comments from individuals, organizations, and public agencies on the Draft Tiered Environmental Document for the Highway 1 Corridor Investment Program. Staff has negotiated a contract amendment with the consultant team in the amount of \$250,000 authorized in the FY 2015-2016 budget. This amendment will cover the cost of updating the air quality, natural environmental, and traffic operations technical studies. This work is due to changes in regulatory guidelines and requirements and to properly respond to comments received on the draft studies. Additional funds will be needed to complete the final environmental document currently anticipated in Summer 2017.