



Santa Cruz County Regional Transportation Commission's
Interagency Technical Advisory Committee (ITAC)

AGENDA
Thursday, November 19, 2015
1:30 p.m.
RTC Conference Room
1523 Pacific Avenue, Santa Cruz, CA

1. Call to Order
2. Introductions
3. Oral communications

The Committee will receive oral communications during this time on items not on today's agenda. Presentations must be within the jurisdiction of the Committee, and may be limited in time at the discretion of the Chair. Committee members will not take action or respond immediately to any Oral Communications presented, but may choose to follow up at a later time, either individually, or on a subsequent Committee agenda.

4. Additions or deletions to consent and regular agendas

CONSENT AGENDA

All items appearing on the consent agenda are considered to be minor or non-controversial and will be acted upon in one motion if no member of the Committee or public wishes an item be removed and discussed on the regular agenda. Members of the Committee may raise questions, seek clarification or add directions to Consent Agenda items without removing the item from the Consent Agenda as long as no other committee member objects to the change.

5. Approve Minutes of the August 20, 2015 ITAC meeting – Page “

REGULAR AGENDA

6. Status of ongoing transportation projects, programs, studies and planning documents - Verbal updates from project sponsors
7. Highway 1 Project – Tier I and Tier II Draft Environmental Impact Report/Environmental Assessment -- Page +
 - a. Copy of November 5, 2015 Staff Report to RTC Board
 - b. Presentation Slides (11/5)
 - c. Document and December 3 public forum information online: www.sccrtc.org/hwy1
8. 2016 Regional Transportation Improvement Program (RTIP) – Page “%
 - a. Staff report
 - b. STIP project changes
 - c. Summary of amendments

9. 2040 Santa Cruz County Regional Transportation Plan Update -- *Page 8*)
 - a. Staff Report
 - b. 2040 RTP Work Plan
 - c. 2040 RTP Schedule
 - d. Draft Goals, Policies and Targets
 - e. 2014 RTP Project List (**bring a copy to meeting** with projects crossed out that should not be carried over into new RTP)
10. Funding Program Updates - Verbal
 - i. Caltrans Planning Grants – Application due date extended to December 31. Information online: <http://www.dot.ca.gov/hq/tpp/grants.html>
 - ii. Regional Surface Transportation Program (RSTP) – anticipated RTC “Call for Projects” early 2016
 - iii. Active Transportation Program (ATP) – Caltrans/California Transportation Commission (CTC) Cycle 3 Call for Projects anticipated Spring 2016.
 - iv. Affordable Housing and Sustainable Communities Program (AHSC) –Strategic Growth Council (SGC) Guidelines scheduled for approval December 17, 2015; call for projects anticipated January 2016
 - v. FY15/16 Low Carbon Transit Operations Program applications due February 1, 2016
 - vi. Others
11. Consider moving January 2016 ITAC meeting up one week to 1/14/16
12. Adjourn. The next ITAC meeting is scheduled for 1:30pm on December 17, 2015 in the SCCRTC Conference Room, 1523 Pacific Avenue, Santa Cruz, CA.

HOW TO REACH US: Santa Cruz County Regional Transportation Commission
1523 Pacific Avenue, Santa Cruz, CA 95060; phone: (831) 460-3200 / fax (831) 460-3215
email: info@sccrtc.org / website: www.sccrtc.org

AGENDAS ONLINE: To receive email notification when the Committee meeting agenda packets are posted on our website, please call (831) 460-3200 or email rmoriconi@sccrtc.org to subscribe.

ACCOMMODATIONS FOR PEOPLE WITH DISABILITIES: The Santa Cruz County Regional Transportation Commission does not discriminate on the basis of disability and no person shall, by reason of a disability, be denied the benefits of its services, programs, or activities. This meeting location is an accessible facility. If you wish to attend this meeting and require special assistance in order to participate, please contact RTC staff at 460-3200 (CRS 800/735-2929) at least three working days in advance of this meeting to make arrangements. People with disabilities may request a copy of the agenda in an alternative format. As a courtesy to those person affected, Please attend the meeting smoke and scent-free.

SERVICIOS DE TRADUCCIÓN/ TRANSLATION SERVICES: Si gusta estar presente o participar en juntas de la Comisión Regional de Transporte del condado de Santa Cruz y necesita información o servicios de traducción al español por favor llame por lo menos con tres días laborables de anticipo al (831) 460-3200 para hacer los arreglos necesarios. (Spanish language translation is available on an as needed basis. Please make advance arrangements at least three days in advance by calling (831) 460-3200.)

TITLE VI NOTICE: The RTC operates its programs and services without regard to race, color and national origin in accordance with Title VI of the Civil Rights Act. Any person believing to have been aggrieved by the RTC under Title VI may file a complaint with RTC by contacting the RTC at (831) 460-3212 or 1523 Pacific Avenue, Santa Cruz, CA 95060 or online at www.sccrtc.org. A complaint may also be filed directly with the Federal Transit Administration to the Office of Civil Rights, Attention: Title VI Program Coordinator, East Building, 5th Floor-TCR, 1200 New Jersey Ave., SE, Washington, DC 20590.

S:\ITAC\2015\Nov2015\Nov15ITACagenda.docx



**Santa Cruz County
Regional Transportation Commission
Interagency Technical Advisory Committee (ITAC)**

DRAFT MINUTES

Thursday, August 20, 2015, 1:30 p.m.
SCCRTC Conference Room
1523 Pacific Ave, Santa Cruz, CA

ITAC MEMBERS PRESENT

Eliza Yu, AMBAG
Taylor Bateman, Scotts Valley Planning
Teresa Buika, UCSC
Erich Friedrich, Santa Cruz Metropolitan Transit District (Metro)
Scott Hamby, Scotts Valley Public Works
Steve Jesberg, Capitola Public Works and Planning Proxy
Kelly McClendon, Caltrans District 5
Joshua Spangrud, Santa Cruz Public Works and Planning Proxy
Steve Wiesner, County Public Works and Planning Proxy

STAFF PRESENT

Ginger Dykaar
Rachel Moriconi
Kim Shultz

OTHERS PRESENT

Eric Child, Santa Cruz Resident
Gina Schmidt, AMBAG

-
1. **Call to Order:** Chair Wiesner called the meeting to order at 1:30pm.
 2. **Introductions:** Self introductions were made.
 3. **Oral Communications:** None.
 4. **Additions/Changes to consent and regular agenda:** None.

CONSENT AGENDA

5. Approved minutes of the June 18, 2015 ITAC meeting. *Hamby moved and Spangrud seconded approval of the minutes. The motion passed with Hamby, Jesberg, McClendon, Spangrud, Wiesner, and Yu voting "yes". Buika and Friedrich abstained.*
6. Received State Highway Operation and Protection Program (SHOPP) Semi-Annual List of Programmed/Funded Projects

REGULAR AGENDA

7. **Status of ongoing transportation projects, programs, studies and planning documents - Verbal updates from project sponsors**

UCSC: Teresa Buika reported that project design for the Active Transportation Program - funded (ATP) bicycle path safety project is underway.

Caltrans: Kelly McClendon reported that the Highway 1 rumble strip and paving project from Western Drive to the San Mateo County line is scheduled to be completed in winter 2016. Highway 9 construction is scheduled for completion in mid-October. Highway 1/17 shoulder widening and northbound SR 1 merge lane extension will start construction in October. Highway 152 paving is completed; ADA upgrades on Highway 152 near Holohan/College and pedestrian facility upgrades on Highway 9 near San Lorenzo Valley High School, Highway 1 near Graham Hill Road, and Highway 1 near Freedom Boulevard are anticipated this fiscal year. Erich Friedrich requested that Caltrans coordinate with METRO on planned construction near San Lorenzo Valley schools.

City of Santa Cruz: Josh Spangrud reported that surveying and environmental review for Segment 7 of the Rail Trail is underway. Speed feedback signs near Gault and Westlake schools, and Rectangular Rapid Flashing Beacons (RRFB) at Broadway and Riverside Drive have been installed. Paving projects are planned for later this year. Lighting will be added on the river levy. In response to questions from Teresa Buika, it was noted that water projects that include traffic control and a PG&E project on Mission Street are anticipated to be completed by September 17. Mr. Spangrud shared information and a flyer about the Corridor Planning project and Active Transportation Plan development and meetings.

METRO: Erich Friedrich reported that the concept design for Pacific Station is done and that METRO's board is anticipated to approve a conceptual design for the Watsonville Transit Center in September. The Green Valley bus stop improvement project is also done. On the operations side, METRO is starting a comprehensive system evaluation and will look at high quality transit corridors, possibly consolidating and eliminating some routes.

Capitola: Steve Jesberg reported that the Capitola/Bay Avenue Roundabout is at 30% design, with right-of-way utility undergrounding anticipated to take one year. Rail pathway conceptual design work is done, with construction scheduled for Spring 2016. Paving work citywide is also in process.

Scotts Valley: Scott Hamby reported that design work for storm damage repairs in the Caltrans right-of-way are underway. The city is revising its Transportation Development Act (TDA) claim in response to comments from the Elderly and Disabled Transportation Advisory Committee (E&D TAC) in order to include audible RRFB at three crosswalks.

AMBAG: Eliza Yu reported on the Planning Director's Forum and Sustainable Communities Strategy (SCS) implementation and the Metropolitan Transportation Plan (MTP)/SCS update. She reported that AMBAG provided comments on the Cap-and-Trade Affordable Housing and Sustainable Communities Program (AHSC), noting the application and scoring process was complicated and not transparent, and that guidelines on how disadvantaged communities are defined should be revised.

Bateman arrived.

RTC: Staff reported that the RTC received extensive input on the Draft Passenger Rail Feasibility Study. The Highway 1 tiered environmental document is scheduled for circulation this fall. Work continues on the county-level travel demand model. The RTC received a \$6.3 million Federal Lands Access Program (FLAP) grant for a north coast section of the Rail Trail.

County Planning: Steve Wiesner reported that several storm damage repair projects are under construction, that San Lorenzo Water District pipeline work on Graham Hill Road and 17th Avenue/Felt slurry seal work are nearing completion, and that PG&E is conducting gas main testing throughout the county. The county is also working on a full bridge replacement on Old County Road, and will be going to bid for the new Felton Covered Bridge roof and the Twin Lakes beachfront project. Kim Shultz commended the County on the Nelson Road storm damage project.

8. Stand Alone Bike Model Tool

Gina Schmidt provided an overview and demonstration of the AMBAG Bike Model Tool, which allows entities to look at the comparative vehicle miles traveled and greenhouse gas benefits of bicycle projects, utilizing information on topography, travel surveys, and the regional travel demand model. ITAC members expressed appreciation for the tool which can be of assistance in development of funding applications.

9. 2040 Metropolitan Transportation Plan (MTP)/Sustainable Communities Strategy (SCS) Update

Eliza Yu, AMBAG provided information on the MTP/SCS update and provided an overview of the Draft Public Involvement Plan. She requested that Committee members submit comments on the plan by the end of August. Teresa Buika suggested AMBAG edit the document to differentiate between environmental justice and involvement of underserved communities. She also requested that colleges and universities be included in the list of stakeholders. In response to questions, it was noted that the timeline was included in the March 2015 ITAC packet. AMBAG is currently collecting input from local jurisdictions for the growth forecast.

10. METRO's Draft Bus Stop Guide

Erich Friedrich reported that METRO has developed a draft Bus Stop Guide to provide guidance to local jurisdictions and developers on design, construction and placement of amenities at bus stops. He requested input on the draft and requested the "Development Review Checklist for Consideration of Transit" (Appendix A-1) be provided to developers and local jurisdiction encroachment permit staff. He noted that the draft was reviewed by the Metro Advisory Committee (MAC). ITAC members expressed appreciation for having the information in a consolidated document. Mr. Friedrich noted that the guide is a "living" document and requested feedback on the document.

11. Caltrans Transportation Concept Report Updates

Kelly McClendon reported that Caltrans Transportation Concept Reports for State Routes 35 and 236 focus on maintenance, include a discussion about possible relinquishment to the County or State Parks if desired, and recommend small-scale modifications. Committee members discussed some of the benefits and challenges of changing state routes to local roads and Caltrans' efforts to bring permitting and route plans in line with the state strategic plans.

12. Funding Program Updates

The Committee received updates on several state and local funding programs:

- Caltrans Planning Grants – Call for Projects August 17, applications due October 30
Information will be online: <http://www.dot.ca.gov/hq/tpp/grants.html>
- State Transportation Improvement Program (STIP) – currently no STIP capacity for the two new years of STIP; many projects to be re-spread (delayed) statewide
- Regional Surface Transportation Program (RSTP) – anticipated RTC “Call for Projects” Fall 2015
- Active Transportation Program (ATP) – CTC Staff Recommendations available by September 15, program adoption October 21-22, 2015
- AB2766 – Air District approval scheduled for September 16, 2015
- Affordable Housing and Sustainable Communities Program (AHSC) – Draft Revised Guidelines anticipated Fall 2015, call for projects anticipated January 2016
- FY15/16 Low Carbon Transit Operations Program applications due November 1, 2015

13. Adjournment: The meeting adjourned at 3:21 p.m.

Minutes prepared by: Rachel Moriconi

S:\ITAC\2015\Aug2015\ITACminAug2015.docx

AGENDA: November 5, 2015

TO: Regional Transportation Commission

FROM: Kim Shultz, Senior Transportation Planner

RE: Highway 1 Project – Tier I and Tier II Draft Environmental Impact Report/Environmental Assessment

RECOMMENDATIONS

Staff recommends that the Regional Transportation Commission (RTC) receive information on the Highway 1 Tier I and Tier II Draft Environmental Impact Report/Environmental Assessment and efforts to obtain public comment on the proposed projects.

BACKGROUND

In September 2003, the RTC, in partnership with Caltrans, and the Federal Highway Administration (FHWA), initiated preliminary design and environmental studies to add high occupancy vehicle (HOV) lanes to Highway 1 from Morrissey Boulevard in Santa Cruz to Larkin Valley/San Andreas Road in Aptos. Progress on the project was hampered by the need to update right-of-way monument surveys on the central section of the project, delays in the availability of the regional travel demand model, resolution of project design elements among all affected parties, and a decision to subordinate work on the HOV lane study in order to advance progress on the environmental document for the Soquel/Morrissey Auxiliary Lanes project.

In the summer of 2011, the FHWA advised the project team that changes in the emphasis and scrutiny of federal environmental regulations, combined with the absence of committed revenues to construct the HOV Lane project, required a change in the format of the environmental document to maintain eligibility to use federal funds on the project. In late 2011, the RTC adopted a revised approach to the project best described as a combined tiered environmental document that consists of two components:

- Tier I – A long term, program level analysis for the future of the entire Highway 1 corridor from Santa Cruz to Aptos. The Tier I concept would be built over time through a series of smaller incremental projects (referred to as Tier II projects).
- Tier II – Project level analysis for smaller incremental projects within the Tier I corridor which would move forward based on available funding, each with independent utility to the highway.

The first Tier II project under review in the draft environmental documents is auxiliary lanes between 41st Avenue and Soquel Drive and a pedestrian/bicycle overcrossing of Highway 1 at Chanticleer Avenue.

DISCUSSION

The Highway 1 Tier I and Tier II Draft Environmental Impact Report/Environmental Assessment has undergone extensive review through Caltrans and the FHWA and as of this writing is scheduled for release to the public, resource agencies, and stakeholders on November 4, 2015. Attachment 1 is the summary of the draft environmental documents including a summary of the environmental impacts – both adverse and beneficial.

The project consultants will present an overview of the draft environmental document including design features of the respective project alternatives under analysis and an overview of significant environmental findings related to traffic operations, visual impacts, noise, wetland resources, and right-of-way impacts.

Staff is updating the RTC Highway 1 webpage to provide information on the draft environmental documents and will upload the entire document for access through the internet, with links to specific topic areas within the 600 page document. The technical studies prepared to support the environmental documents will also be available on RTC's website.

Staff is placing display ads in prominent newspapers throughout the county in compliance with Caltrans standards announcing the availability of the environmental documents. As part of this outreach effort staff is also issuing press releases and E-news messages to interested parties. Staff is also issuing direct mail flyers to all residents and businesses within a ¼ mile radius of the Tier II project limits (between 41st Avenue and Soquel Drive). Interested parties will be directed to RTC's website or to the Aptos, Capitola, Central, Live Oak, and Watsonville libraries and RTC's office to view the draft environmental documents.

As part of the public notification information, staff will be publicizing an Open Forum Public Hearing scheduled for Thursday, December 3, 2015, between 6:00 – 8:30 p.m. This public meeting will be held at the Live Oak Elementary School, Multi Purpose Room, located at 1916 Capitola Road (at 17th Avenue) in Live Oak. Caltrans, RTC staff and consultant engineering and environmental staff will be in attendance at the meeting to provide information and record questions and comments from the public. There will be a court reporter at the meeting to document oral comments offered by participants and an interpreter to assist Spanish language speakers.

Caltrans has agreed to extend the comment period for a total of 75 days from the scheduled document release date, in response to RTC's request, with the deadline for public and agency comments currently set for Monday, January 18, 2016. Comments are to be directed to Caltrans as the lead agency for compliance with the

California Environmental Quality Act (CEQA). The consultant team will prepare a Public Meeting Record to document all public outreach efforts and comments received.

All comments will be addressed in the final environmental document and any changes made to the project as a result of those comments will be highlighted in the final documents. Staff anticipates the response to public comments to take 3-4 months depending on the volume of comments received and then the final environmental document is subject to multiple reviews by Caltrans and FHWA prior to adoption.

SUMMARY


As of this writing, the Highway 1 Tier I and Tier II Draft Environmental Impact Report/Environmental Assessment is scheduled for release on November 4, 2015. Attachment 1 is the summary of the draft environmental document including a summary of the environmental impacts. The project consultants will present an overview of the draft environmental document including design features of the respective project alternatives under analysis and an overview of significant environment findings. Interested parties are to be directed to RTC's website or to the Aptos, Capitola, Central, Live Oak, and Watsonville libraries and RTC's office to view the draft environmental document.

An Open Forum Public Hearing is scheduled for Thursday, December 3, 2015, between 6:00 – 8:30 p.m. to be held at Live Oak Elementary School, Multi-Purpose Room, located at 1916 Capitola Road (at 17th Avenue) in Live Oak. The deadline to submit public comments is set for Monday, January 18, 2016.

Attachments:

1. Executive Summary – Highway 1 Tier I/II Draft Environmental Impact Report/Environmental Assessment - Online: www.sccrtc.org/hwy1

\\Rtcserv2\shared\RTC\TC2015\TC1115\Hwy1\StaffReport-151105.docx



Highway 1 Corridor Investment Program

Highway 1 Tier I/II DEIR/EA

Project Update November 2015

November 2015

Agenda

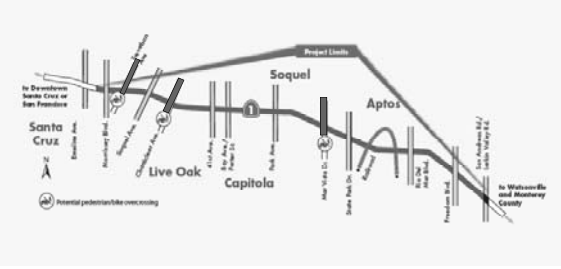
- **Project Overview**
- **Engineering**
- **Environmental review process**

Note: refer to acronym sheet at the end of presentation

2

Corridor Limits

- Planned Improvements - 9 miles on Highway 1 – San Andreas to Morrissey



3

Purpose and Need

- Purpose of the Highway 1 Corridor Environmental Analysis**
 - Reduce congestion
 - Encourage carpooling and use of alternative transportation modes as means to increase capacity
 - Improve safety

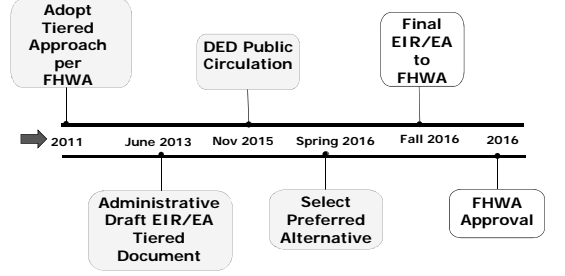
4

Purpose and Need

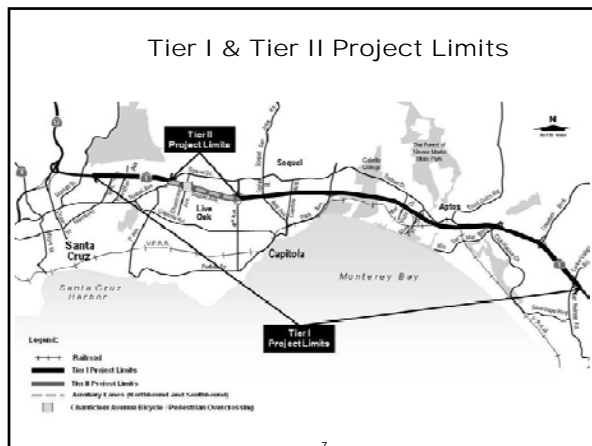
- Existing and Anticipated Needs to Address**
 - Recurrent congestion
 - Existing and future delays for commuters, commerce, and emergency vehicles
 - Disincentives to use transit; congestion prevents cost-effective transit service
 - No incentives to carpool and lack of supporting facilities
 - Accident rates exceed statewide averages
 - “Cut-Through” traffic on local streets

5

Project Timeline



6



Tier I Corridor - Alternatives Under Consideration

- **No Build Alternative**
 - Does not address corridor purpose and need but offers comparison with impacts of other alternatives
- **Transportation System Management (TSM) Alternative**
 - Lower cost improvements to partly address corridor purpose and need without adding capacity
- **High Occupancy Vehicle Lane (HOV) Alternative**
 - Designed to fully address corridor purpose and need

November 2015

Tier I Corridor : Engineering - Alternatives Development

- **Key Issues**
 - Geometric constraints
 - Interchange review process
 - Engineering design-
 - Optimize local circulation
 - Caltrans standard design and right of way impacts
- ✓ Caltrans conceptual agreement on corridor footprint

9

Tier I Corridor : Engineering - Special Studies

- **Sustainable Design Elements**
 - Incorporate sustainable design elements
- **Mobility Assessment**
 - Transit Market Analysis (access and usage)
 - Mainline vehicular movements
 - Vehicular movements at ramp termini (safety)
 - Pedestrian movements at interchanges and overcrossings

10

Tier II : Engineering - Project Limits

- Standard Auxiliary Lanes
- Chanticleer Ped/Bike Overcrossing
- Total Project Cost **\$28M** Final Design, ROW, & Construction
 - Auxiliary Lanes \$21M, Bike/Ped OC - \$7M

11

November 2015

Chanticleer Bike/Ped Overcrossing

12

Project Status

Environmental Review Status

13

Environmental Document Overview

- Joint CEQA/NEPA document
 - California Environmental Quality Act (CEQA)
 - National Environmental Policy Act (NEPA)
- Environmental Impact Report/ Environmental Assessment
- Combined Tier I and Tier II document



14

What Is Tiering?

- Phased approach to implement project over an extended time period
 - Tier I: **Program**-level review (corridor)
 - Tier II: **Project**-level review (segment)
- Future Tier II projects subject to project level environmental analysis



15

Key Environmental Topics

- Right of way acquisition
- Traffic operations
- Visual impacts
- Noise
- Impacts to wetlands, threatened and endangered species



16

Right of Way Acquisition

Number of Displaced Units by Land Use Type

Land Use Type	Tier I Alternatives		Tier II Auxiliary Lane Alternative
	TSM Alternative	HOV Alternative	
Residential Units	0	8	0
Business Units	0	12	0

Note: Partial acquisitions are required for all alternatives

Proposed mitigation:

- Financial compensation for property acquisition
- Relocation assistance

17

Traffic Operations

- Both Tier I build alternatives would
 - Improve average speeds in the corridor
 - Reduce traffic on parallel streets
- Tier II Auxiliary Lane Alternative would result in
 - Operational improvements, primarily in the northbound direction
 - Improved weaving/merging conditions through the busiest section of Highway 1 in Santa Cruz



18

Visual Impacts

Visual Changes Resulting from Alternatives

Tier I Build Alternatives	Tier II Auxiliary Lane Alternative
<ul style="list-style-type: none"> ▪ New lanes ▪ New pedestrian/bike overcrossings ▪ New retaining walls and sound walls ▪ Removal of mature vegetation ▪ Bridge widening ▪ Ramp reconstruction 	<ul style="list-style-type: none"> ▪ New lanes ▪ New pedestrian/bike overcrossing ▪ New retaining walls ▪ Removal of mature vegetation

19

Visual Simulation Of Tier II Improvements



Existing view



Visual simulation

View from Soquel Ave. sidewalk, looking east toward Chanticleer Ave.

20

Visual Impact Measures

- Avoidance, minimization, and mitigation measures would include
 - Save and protect as much existing vegetation as feasible
 - Landscape and revegetate disturbed areas to the greatest extent feasible
 - Include skyline trees in the planting palette
 - Apply aesthetic treatments to retaining walls and bridges



21

Noise Impacts

Number of Receptors Where Noise Would Approach or Exceed Abatement Criteria

Tier I Alternatives		Tier II Auxiliary Lane Alternative
TSM Alternative	HOV Alternative	
108	130	7

- Tier II analyses will identify "feasible and reasonable" abatement per Caltrans protocol
- Tier II Auxiliary Lane Alternative
 - Noise insulation of 1 residence
 - Sound walls found to be feasible but not reasonable

22

Wetland Impacts

Permanent Wetland Impacts (acres)

	Tier I Alternatives		Tier II Auxiliary Lane Alternative
	TSM Alternative	HOV Alternative	
Army Corps wetlands	0.23	0.78	0
Army Corps other waters	0.10	0.15	0.22
Local Coastal Plan jurisdiction	2.20	3.22	0
CA Dept. of Fish & Wildlife jurisdiction	3.58	8.98	0.15

Note: There is some overlap among the various jurisdictions

23

Impacts to Threatened and Endangered Species

- Tier I build alternatives may potentially affect
 - Tidewater goby
 - California Coast steelhead
 - California red-legged frog
 - Santa Cruz long-toed salamander
 - California tiger salamander
 - White-tailed kite
 - Tricolored blackbird
- Tier II Auxiliary Lane Alternative may affect
 - Tidewater goby
 - California red-legged frog

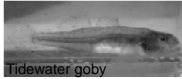


California red-legged frog

24

Wetland & Species Impacts: Measures

- Avoidance, minimization, and mitigation measures for impacts would include:
 - Measures to avoid and minimize impact during construction
 - Compensatory mitigation would include in-kind, on-site and/or off-site replacement of vegetation



Tidewater goby



Tidewater goby

25

Environmental Review Process

- Environmental review process for Tier I/Tier II EIR/EA
 - Public comment period: November 4, 2015 – January 18, 2016
 - Open forum public hearing on December 3, 2015
 - Response to comments/preparation of Final EIR/EA: Fall 2016
 - Certify Final EIR/Sign Finding of No Significant Impact: Winter 2016/2017

26

Questions and Answers

27

Acronyms

APE	area of potential effect
CMIA	corridor mobility improvement account
EA	environmental assessment
ED	environmental document
FHWA	federal highway administration
HOV	high occupancy vehicle
IS	initial study
PDT	project development team
TSM	transportation system management
ACOE	army corps of engineers
HQ	headquarter (Caltrans)
GHG	green house gas
PS&E	plan, specifications and estimate
CM	construction management
RFP	request for proposal
STIP	surface transportation improvement program

28

Right of Way Acquisition

Number of Partial and Full Acquisitions
by Land Use Type

Land Use Type	Tier I Alternatives				Tier II Auxiliary Lane Alternative	
	TSM Alternative	HOV Alternative	Partial	Full	Partial	Full
Residential Properties	2	0	9	5	1	0
Commercial Properties	9	0	30	4	4	0

Note: In some cases there are multiple units on individual properties

29

Visual Simulation Of Tier I Improvements



Existing view

Visual simulation

View from NB Route 1, looking west toward South Aptos Railroad crossing

30

Noise Abatement

- Caltrans' Noise Analysis Protocol requires noise abatement to be both "feasible and reasonable"
- "Feasible" relates to engineering:
 - Must achieve 5-decibel reduction in future noise level
 - Considers topography, access requirements, other noise sources, and safety
- "Reasonable" relates to cost and other factors:
 - Cost per benefited unit
 - Acceptance by residents
 - Absolute noise level
 - Build versus existing noise

31

Noise Impact

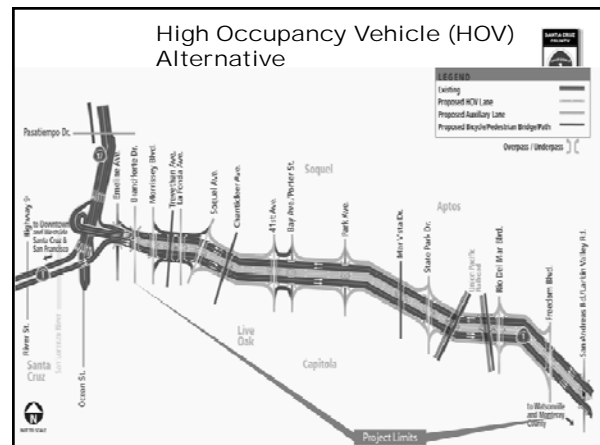
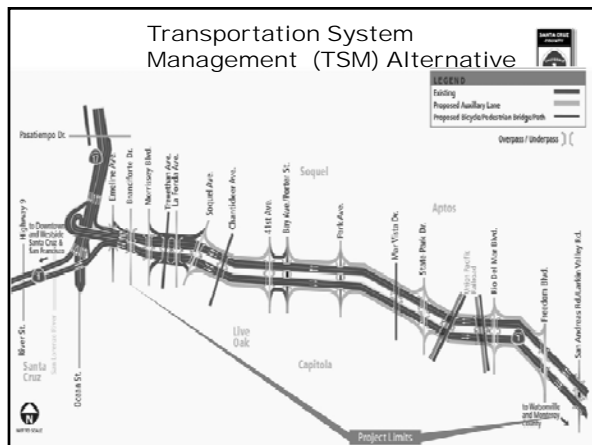
Noise impact occurs when:

- Project results in a substantial increase in noise level (12-decibel or more increase) OR
- Future noise level with the project approaches or exceeds noise abatement criteria

Approaching the noise abatement criteria is defined as:

- Coming within one decibel of the noise abatement criteria

32



High Occupancy Vehicle (HOV) Alternative

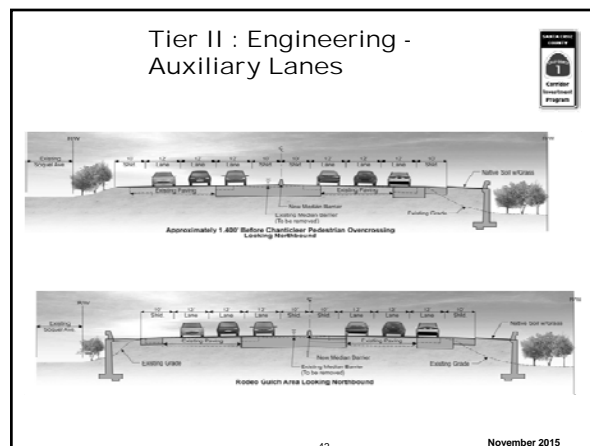
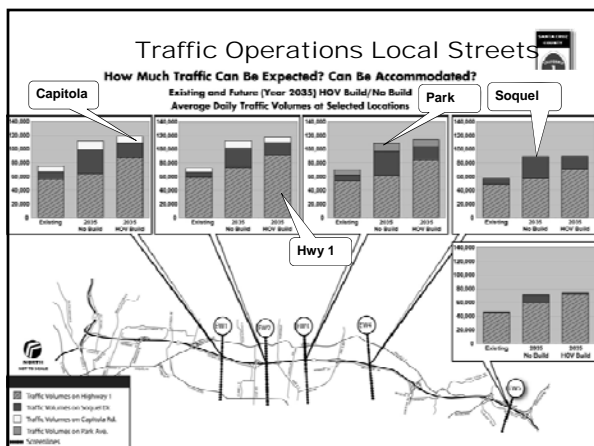
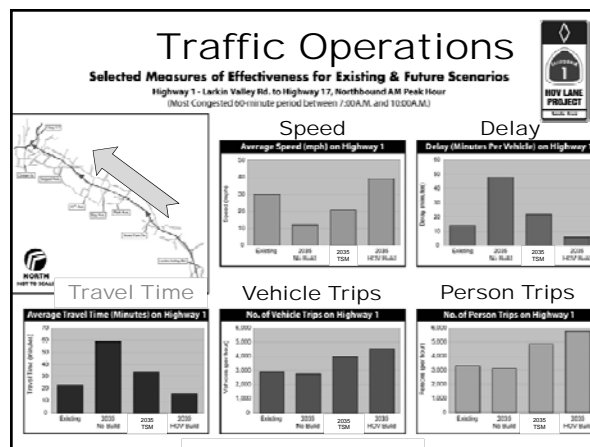
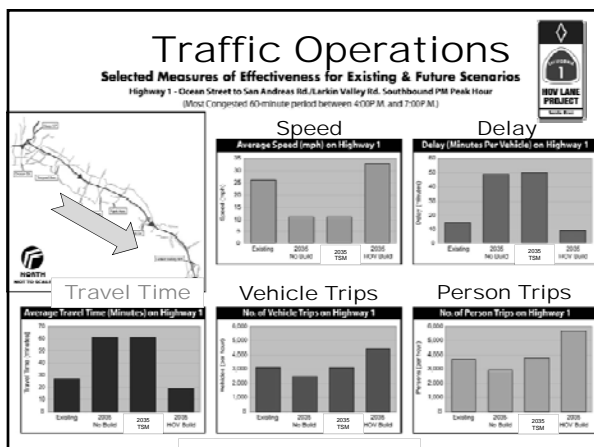
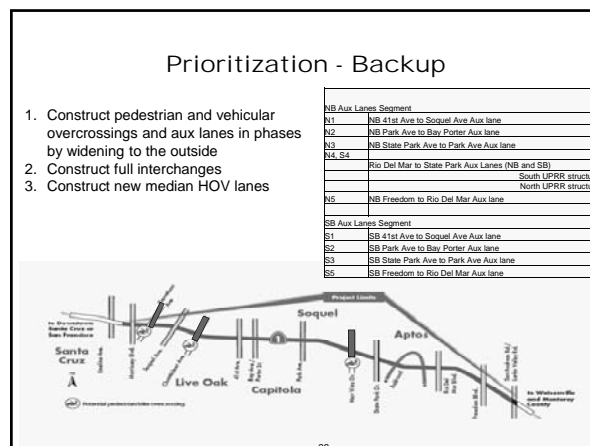
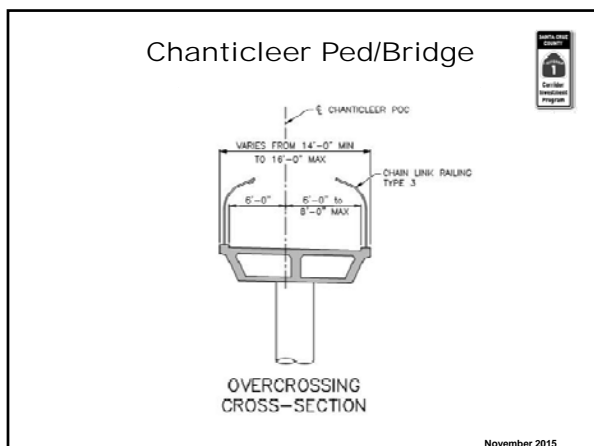
- High Occupancy Vehicle Lanes in Median of Hwy 1
 - Designed for exclusive use of carpool/vanpool and transit vehicles during peak commute periods
- Improved Ramp Design - Improved Mobility for Vehicles, Pedestrians, Bicyclists and Buses
- Transit Service Enhancements - Proposed Freeway Oriented Bus Stops Adjacent to Park and Ride Lots
- Ramp Metering and Transportation Operation

November 2015

Transportation System Management (TSM) Alternative

- Add Auxiliary Lanes Between Interchanges
 - Auxiliary lane is designed to separate vehicles entering and exiting freeway from mainline; not designed for through traffic
- Ramp Metering and some Ramp Geometry Improvements
- Transportation Operations System (TOS) Features
- NO Additional Through or High Occupancy Vehicle (HOV) Lanes

November 2015



Combined Tier I/II Document

- Evaluates Tier I alternatives at the program level
 - 9-mile corridor
- Evaluates the current Tier II build alternative at the project level
 - 1.4-mile Auxiliary Lane Alternative
 - Includes pedestrian/bicycle overcrossing at Chanticleer Avenue



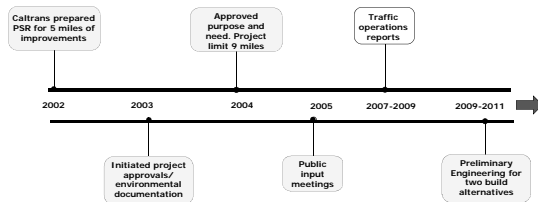
43

Tiering of Hwy 1 Corridor

- **Tier I Corridor: Morrissey to San Andreas**
 - Focus on broad issues
 - Establish logical termini & independent utility for HOV
 - Present preliminary project funding and phasing plan
 - Cumulative impacts
- **First Tier II Project: Soquel to 41st + Chanticleer Ped/Bike Overcrossing**
 - Construction-level details
 - Demonstrate operational independence
 - Document environmental impact
 - Identify mitigation measures

44

Project Timeline



45

TO: Interagency Technical Advisory Committee (ITAC)

FROM: Rachel Moriconi, Sr. Transportation Planner

RE: *2016 Regional Transportation Improvement Program*

RECOMMENDATION:

Staff recommends that the Interagency Technical Advisory Committee (ITAC):

1. Recommend that the Regional Transportation Commission (RTC) approve changes to previously programmed projects to reflect current project scopes, costs and schedules, as recommended by staff and project sponsors (Attachments 2 and 3) for the *2016 Regional Transportation Improvement Program (RTIP)*.
-

BACKGROUND

The Santa Cruz County Regional Transportation Commission (RTC), as the state-designated Regional Transportation Planning Agency (RTPA) for Santa Cruz County, is responsible for selecting projects to receive certain state and federal transportation revenues, including State Transportation Improvement Program (STIP) funds. STIP funds can be used on a variety of projects, as outlined in the California Transportation Commission's (CTC) STIP Guidelines. These include: highway, local street and road, rail, transit and paratransit capital, bicycle, pedestrian, carpool, safety, and bridge projects. The RTC programs funds to specific projects through its *Regional Transportation Improvement Program (RTIP)*. Consistent with California Transportation Commission (CTC) guidelines, the RTIP must be based on the Regional Transportation Plan (RTP) and a region wide assessment of transportation needs and deficiencies. Programming in the RTIP cannot be based on a formula distribution of funds among agencies.

Every two years a new RTIP and STIP is adopted by the RTC and CTC respectively. Caltrans develops and the California Transportation Commission (CTC) adopts a Fund Estimate showing anticipated revenues available for STIP projects over the next five-years. While each county in the state is designated a share of funds to program (based on formulas established under SB45 in 1997), STIP projects selected by the RTC are subject to concurrence from the California Transportation Commission (CTC), which makes the final determination on which projects are programmed statewide, what year they are programmed, and when to release (allocate) funds to individual projects. Each new RTIP includes projects carried forward from the previous RTIP and any amendments (including new projects when funding is available), based on proposals from project sponsors.

In addition to serving as its proposal to the CTC for STIP funds, the Santa Cruz County RTIP also provides information about projects the RTC has approved to receive the region's shares of Regional Surface Transportation Program (RSTP) funds and is used as a tool to assist in monitoring projects to ensure state and federal delivery deadlines are met. Projects approved for federal funds and regionally-significant projects must also be listed in the Federal Transportation Improvement Program (FTIP) produced by the Association of Monterey Bay Area Governments (AMBAG).

DISCUSSION

Typically in the fall of odd years the RTC issues a "call for projects" soliciting applications for transportation projects to receive the county's formula share of STIP funds. Historically, Santa Cruz County's share of STIP funds has been \$3 to \$5 million per year. However, as discussed at prior meetings, for the 2016 State Transportation Improvement Program (STIP), no new funding is available for programming and instead most projects previously programmed will be delayed to later years through FY20/21. The shortfall in STIP funds is the result of the reduction of the state excise tax on gasoline that went into effect on July 1, 2015, the so-called "gas tax swap" of 2010 - under which transportation bond debt service is repaid off the top from the excise tax on gasoline, and CTC decisions to prioritize the State Highway Operation and Protection Program (SHOPP) for other flexible state and federal transportation revenues. Attachment 1 is a chart prepared by Caltrans showing how the shortfall impacts the STIP year to year, starting in FY15/16.

Given the severe STIP funding shortfalls, instead of programming new STIP funds the 2016 RTIP carries forward and updates scope, schedule, and cost information on previously approved projects. Staff has worked with project sponsors to review their STIP-funded projects and **recommends that the ITAC recommend the RTC request that the California Transportation Commission (CTC) shift funds for some STIP projects to later years, based on current project schedules (Attachment 2).**

In the event that the CTC is not able to accommodate all of the projects in the years proposed by project sponsors (Attachment 2) and instead proposes to delay projects, staff recommends that priority for STIP be given to local projects based on project readiness and in consideration of construction timing constraints. For example, projects that have already completed environmental review, design, and/or right-of-way and that have all matching funds secured (and budgeted) would be prioritized. The Freedom Boulevard Cape Seal project, which the County of Santa Cruz needs to construct over the summer in order to minimize impacts to Aptos High School and avoid cost increases, would be a priority for FY15/16.

While the current situation for State Transportation Improvement Program (STIP) funding is dismal, the CTC, RTC staff, cities, counties, and other transportation agencies statewide continue to urge the Legislature and Governor to increase funding for the STIP and other transportation programs through the "Extraordinary Session on Transportation and Infrastructure."

Other Project Amendments

In addition to schedule changes for STIP projects, **staff and project sponsors recommend that the 2016 Santa Cruz County Regional Transportation Improvement Program (RTIP) reflect updated scope, schedule, cost and minor administrative changes to projects previously approved for other funds (Attachment 3)**. All of the projects listed in the RTIP were originally approved for funding by the RTC following a public hearing and evaluation by RTC advisory committees.

Next Steps

The RTC will consider recommendations for STIP projects and amendments to other previously programmed projects at its December 3, 2015 meeting as part of option of the 2016 Regional Transportation Improvement Program (RTIP). The RTC's proposed amendments to State Transportation Improvement Program (STIP) projects, is due to the California Transportation Commission (CTC) by December 15, 2015. The CTC will hold a hearing on STIP proposals in January 2016. Based upon proposals submitted statewide, CTC staff will inform RTC staff if they propose to delay projects by February 19, 2016. The CTC is scheduled to adopt the 2016 STIP on March 17, 2016.

RTC staff intends to return to the RTC in early 2016 with a recommendation to issue a call for projects for up to \$6 million in new Regional Surface Transportation Program (RSTP) funds, which are not subject to CTC concurrence.

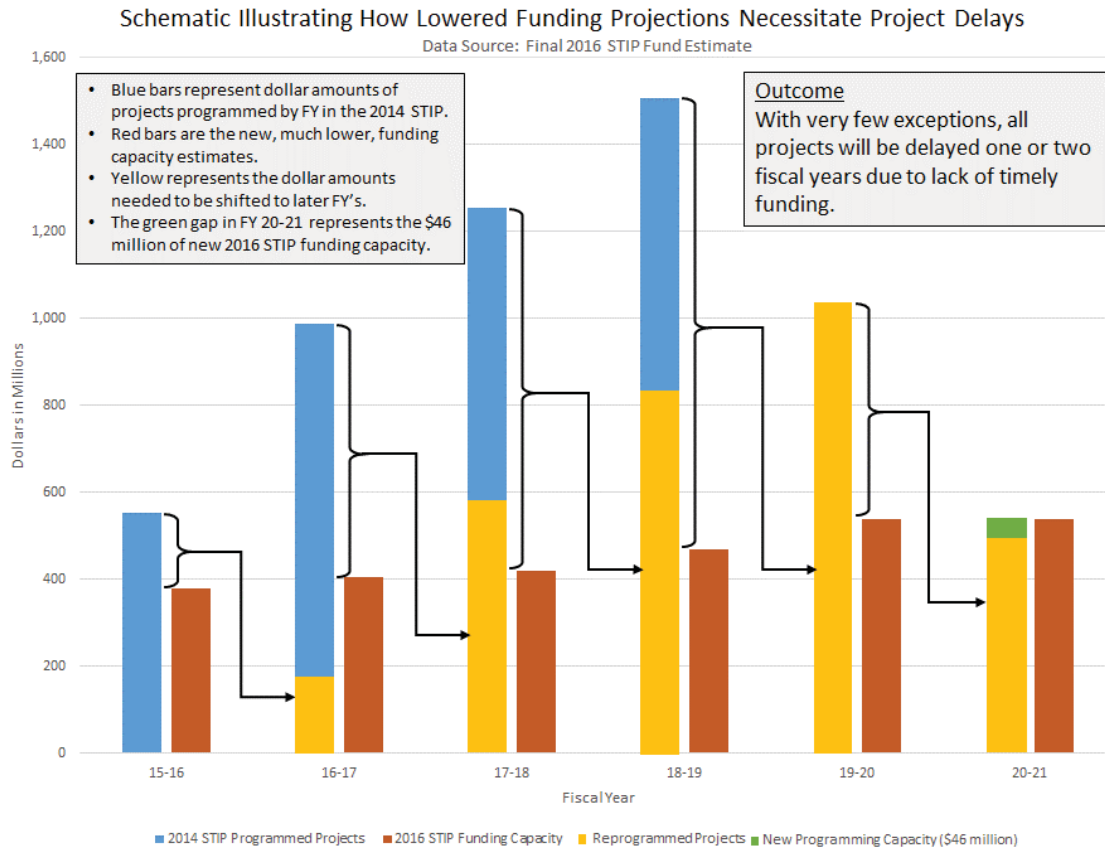
SUMMARY

Every other year the RTC prepares a Regional Transportation Improvement Program (RTIP) which identifies projects to receive certain state and federal funds. Due to state funding shortfalls because of lowered gas tax revenues and diversion of transportation funds to repay state bond debt service, no new State Transportation Improvement Program (STIP) funding is available for programming and instead the California Transportation Commission (CTC) has asked regions to shift some projects to later years of the STIP. Staff recommends that the ITAC recommend the RTC approve updated project schedule, scope, and funding information for the 2016 Regional Transportation Improvement Program (RTIP) (Attachments 2 and 3), as requested by project sponsors.

Attachments:

1. 2016 STIP Funding Shortfalls
2. Recommendations for Previously Approved STIP Projects
3. Amendments to Other Projects

S:\ITAC\2015\Nov2015\RTIP2016\itac.doc



Caltrans - Transportation Programming

August 27, 2015

Figure 1: STIP Funding Projection

In 2014, when the last STIP was adopted, the surprising drop in fuel costs had yet to be foreseen. Revenues were calculated and projected, and projects were programmed against assumed higher revenues, as represented by the blue bars in Figure 1. The red bars represent current revenue forecasts. The yellow bars represent projects that will have to be reprogrammed (delayed) from their current programming year to a future year.

Since revenues limit what can be funded, projects will need to slip to the future due to a lack of timely funding.

Santa Cruz County 2016 STIP Proposal

Some projects need to be respread (delayed) through 2020/21

All figures in 000's (thousands)

Agency	RTIP #	Project	TOTAL STIP	Current STIP by Fiscal Year						Totals by Component			
				15-16	16-17	17-18	18-19	19-20	20-21	R/W	Const	E&P	PS&E
Santa Cruz	SC 25	Rt 1/9 Intersection modifications	1,329	0	1,329	0	0			0	1,329	0	0
		<i>Schedule: Subject to completing Right-of-Way</i>			<i>Alloc. 10/16</i>					<i>end 10/16</i>		<i>done</i>	<i>end 10/16</i>
Santa Cruz	TRL07SC	Monterey Bay Sanctuary Scenic Trail Network: Segment 7 Natural Bridges Dr to Pacific Ave	805	0	805	0	0			0	805	0	0
		<i>Schedule: No changes anticipated</i>			<i>Alloc. 9/16</i>					<i>underway</i>	<i>Fall 2016</i>	<i>end 5/16</i>	<i>end 9/16</i>
Santa Cruz Co	CO 73	Cassery Rd Bridge Replacement	125	0	(125)	125	0			0	125	0	0
		<i>Schedule: some risk, dependent on matching local gas tax revenue availability</i>									<i>FY17/18</i>	<i>est. 6/16</i>	<i>est. 6/16</i>
Santa Cruz Co	CO 74	Freedom Blvd Cape Seal (Hwy 1 to Pleasant Vly Rd)	800	800	0	0	0			0	800	0	0
		<i>Schedule: Constrained by school schedule</i>		<i>Alloc 3/16</i>							<i>Alloc 3/16</i>		
Watsonville	WAT 01	Rt 1 Harkins Slough Rd interchange (10S-041)	7,340	0	(462)	(6878)	462	6,878		462	6,878	0	0
		<i>Schedule: TBD once PID done/funds to be shifted; most at risk of schedule slip</i>								<i>Alloc 7/18</i>	<i>Alloc 2/20</i>		
Watsonville	WAT 38	Airport Blvd at Freedom Blvd modifications	850	(850)	850	0	0			0	850	0	0
		<i>Schedule: Project is currently delayed</i>			<i>Alloc 12/16</i>						<i>Ad 1/17</i>	<i>est 6/16</i>	<i>end 1/17</i>
Watsonville	WAT 40	Airport Boulevard Improvements (east of Westgate Drive/Larkin Valley Road to east of Hanger Way)	1,195	0	1,195	0	0			0	1,195	0	0
		<i>Schedule: No changes anticipated</i>			<i>Alloc 1/17</i>						<i>Alloc 1/17</i>		
Watsonville	WAT 41	Sidewalk Infill Harkins Slough Road and Main Street	120	(120)	120	0	0			0	120	0	0
		<i>Schedule: R/W issues causing slight delay</i>			<i>Alloc 8/16</i>					<i>done 8/16</i>	<i>start 9/16</i>	<i>end 3/16</i>	<i>end 5/16</i>
Watsonville	TRL18L	Monterey Bay Sanctuary Scenic Trail Network: Lee Rd to Slough Trail Connection	1,040	90	950	0	0			0	950	0	90
		<i>Schedule: Future LT match at risk if not on time. Very high priority for community</i>		<i>Alloc Jan or Mar</i>	<i>Alloc 8/16</i>					<i>3/16-9/16</i>	<i>ad 9/16</i>	<i>done 3/16</i>	<i>3/16-9/16</i>
SCCRTC	RTC 04	Planning, programming, and monitoring	524		175	175	174			0	524	0	0
		<i>Schedule: ongoing</i>									<i>ongoing</i>		
SCCRTC	RTC 01	Freeway Service Patrol	150		150	0	0			0	150	0	0
		<i>Schedule: ongoing</i>											

Santa Cruz County 2016 STIP Proposal

Some projects need to be respread (delayed) through 2020/21

All figures in 000's (thousands)

Agency	RTIP #	Project	TOTAL STIP	Current STIP by Fiscal Year						Totals by Component			
				15-16	16-17	17-18	18-19	19-20	20-21	R/W	Const	E&P	PS&E
SCCRTC	RTC 30	Rt 1 Mar Vista bike/ped overcrossing	6,564	<u>(500)</u>	<u>(1635)</u>	<u>1,635</u>	<u>4,929</u>			1,060	4,929	0	575
		<i>Schedule: Could swap RSTP currently programmed for Construction with STIP in FY15/16</i>		<i>use RSTP</i>		<i>Alloc 3/18</i>	<u><i>\$500</i></u> <i>from E&P</i>			<i>4/18-12/20</i>	<i>1/21 ad-12/21</i>	<i>3/16-3/18</i>	<i>4/18-12/20</i>
SCCRTC	RTC 24F	Rt 1, 41st Ave/Soquel Av Aux Lns & bike/ped bridge; could maybe shift design	4,000	0	4,000	0	0		Reserve \$2M	1,430	reserve below	0	2,570
		<i>Schedule: Needs more STIP for construction; very high priority project</i>			<i>Alloc 1/17</i>					<i>start 1/17</i>	<i>est 18/19</i>	<i>Draft EIR 11/15</i>	<i>3/17 (or 17/18)</i>
Proposed 2016 STIP			24,842	890	9,574	1,935	5,565	6,878	\$2.5M res				
Current 2014 STIP			24,842	2,360	10,826	11,482	174	0	0				
Change			0	-1,470	-1,252	-9,547	5,391	6,878					

Acronyms:

Components - R/W: Right-of-way; Const: Construction; E&P: Environmental and Project Report; PS&E: Plans, Specifications, and Engineering (design)

RTIP: Regional Transportation Improvement Program (RTIP)

STIP: State Transportation Improvement Program (STIP)

Bold & Underline = funds moved to later years

2016 Regional Transportation Improvement Program (RTIP)
Proposed Amendments to Previously Approved Projects
For consideration at December 3, 2015 RTC meeting

Project #	Project	Proposed Amendment
CO 66	East Cliff Dr. Cape Seal (12th-17th Ave)	Shift Construction funds to FY 16/17 to match current schedule/coordination with sanitation project (Summer 2017).
CO 73	Cassery Rd. Bridge Replacement	Shift Construction funds to FY 17/18. Delayed due to drop in local gas tax revenues. (Summer 2017)
CO 74	Freedom Blvd Cape <u>Chip</u> Seal (Hwy 1 to Pleasant Valley)	Will request CTC allocation in Spring 2016, however, reducing scope to chip seal and maybe shorter limits depending on final cost and local gas tax revenues.
TRL 9bCO	Twin Lakes Beachfront (5th-7th Ave)	Shift Construction funds to FY 16/17 to match current schedule. Delayed due to funding. (Summer 2016)
CAP 11	Clares Street Traffic Calming	Shift RSTPX Construction to FY16/17 to match current schedule (Fall 2016). Waiting for completion of utility work.
CAP 12	38th Ave Reconstruction, sidewalk and bicycle lanes	Shift RSTPX Construction to FY15/16 to match current schedule (Spring 2016). Right-of-way deleted from project.
CAP 17	Upper Pacific Cove Parking Lot Pedestrian Trail and Depot Park Transit Stop	Shift RSTP Construction funds to FY 15/16 to match current schedule (Spring 2016).
SC 42	Soquel Ave at Frederick St. Intersections Modifications	Shift RSTPX Construction funds to FY16/17 to match current schedule (Fall 2016). Delayed due to limited staff resources.
SV 27	Mt. Hermon/Scotts Valley Dr/Whispering Pines Dr. Intersection Operations Project	Amend project scope based on traffic study findings: <u>Extend length of</u> Add a left turn lane from northbound Mt. Hermon Rd. to eastbound Whispering Pines Dr <u>and add a third through lane on Mt. Hermon Rd.</u> , modify existing signal, construct curb, gutter, sidewalk and curb ramps, modify striping and pavement markings, <u>improve bicycle facilities</u> , resynchronize intersection timing, and repave intersection area.
WAT 01	Hwy 1/ Harkins Slough Road Interchange	Shift \$7.3 million STIP funds to FY18/19 and 19/20. Anticiapte City will request to shift funds to separate bicycle/pedestrian bridge following completion of project initiation document.
WAT 38	Airport Blvd Improvements (Freedom Blvd to City Limits)	Request CTC shift FY15/16 STIP Construction funds (\$850k) to FY16/17. Environmental review delayed.
WAT 41	Sidewalk Infill Harkins Slough Road and Main Street	Request CTC shift FY15/16 STIP Construction funds (\$120k) to FY16/17. Environmental review and right-of-way delayed
RTC 24f	Hwy 1: 41st to Soquel Av Auxiliary Lanes and Chanticleer Bike/Ped Bridge	Update to separate out right-of-way support costs from ROW capital
RTC 30	Hwy 1 Bicycle/Ped Overcrossing at Mar Vista	In order to avoid project delays despite statewide STIP shortfalls - shift \$500k RSTP currently programmed for Construction to environmental in order to initial environmental review; move \$500k STIP currently programmed for environmental to construction. Exchange the \$500k RSTP for RSTPX. Shift design and right-of-way to FY17/18 and construction to FY18/19 to match updated schedule.

AGENDA: November 19, 2015

TO: Interagency Technical Advisory Committee

FROM: Ginger Dykaar, Transportation Planner

RE: 2040 Santa Cruz County Regional Transportation Plan

RECOMMENDATIONS

Staff recommends that the Interagency Technical Advisory Committee (ITAC):

1. Receive information on the development of the 2040 Regional Transportation Plan (RTP);
 2. Provide input on the draft goals, policies and targets of the 2040 RTP;
 3. Review the 2014 Regional Transportation Plan (RTP) project list to identify projects that have been completed or should not be included in the 2040 Regional Transportation Plan.
-

BACKGROUND

As the regional transportation planning agency (RTPA) for Santa Cruz County, the Regional Transportation Commission (RTC) is responsible for developing, implementing and regularly updating the Regional Transportation Plan (RTP) for Santa Cruz County. The RTP is a state-mandated plan that identifies transportation needs in Santa Cruz County over the next twenty-plus years. It estimates the amount of funding that will be available over this timeframe and identifies a financially constrained priority list of projects. This planning effort is a critical component to project implementation as it provides a forum for setting the direction of transportation in our county over the next 20 plus years, it positions our community to receive federal, state or local funding for projects, and helps facilitate collaboration on projects. Individual projects listed in the RTP can only be implemented as local, state and federal funds become available.

The RTPs adopted by RTPAs in Santa Cruz, Monterey, and San Benito Counties are incorporated into the federally-mandated Metropolitan Transportation Plan/state-mandated Sustainable Communities Strategy (MTP/SCS), which is prepared by the Association of Monterey Bay Area Governments (AMBAG). The current RTP was adopted by RTC in June 2014 at the same time as the MTP/SCS was adopted by AMBAG and the 2014 RTPs by Transportation Agency for Monterey County (TAMC) and San Benito Council of Governments (SbCOG).

DISCUSSION

The next Santa Cruz County RTP and AMBAG MTP/SCS are scheduled for adoption in June 2018. These documents will provide transportation plans through 2040 and will be referred to as the 2040 RTP and 2040 MTP/SCS. The RTP and AMBAG MTP/SCS are being updated after four years based on state law requirements to update the RTP every four or five years and SB 375 requirements to sync the adoption of the regional housing element (RHNA) that occurs every 8 years with the adoption of the MTP.

2040 RTP Work Plan

The Santa Cruz County Regional Transportation Plan consists of three main elements; the Policy Element, the Financial Element, and the Action Element.

- The Policy Element identifies the goals, policies, and measurable outcomes/targets that guide transportation funding decisions and prioritization.
- The Financial Element identifies funds anticipated to be available for transportation projects and the outstanding funding needs over the next 20 plus years.
- The Action Element of the RTP identifies specific projects and programs that could be funded within the projected funds identified in the Financial Element (Constrained) and which projects/programs would require new revenues above and beyond those anticipated over the next twenty-plus years (Unconstrained).

The Santa Cruz County Regional Transportation Plan underwent a major update in 2014. Given the significant re-visioning of the RTP for 2014, the 2040 RTP will be a minor update. The draft work plan for the 2040 RTP is outlined in **Attachment 1** and the schedule in **Attachment 2**.

Policy Element

The 2014 Santa Cruz County Regional Transportation Plan included a major re-visioning of the goals and policies. The RTC voluntarily adopted a sustainability framework for the 2014 RTP using the Sustainable Transportation Analysis and Rating System (STARS). Goals, policies, and targets were identified to achieve a more sustainable transportation system.

The draft goals, policies and targets for the 2040 RTP (**Attachment 3**) are a minor revision of the 2014 RTP goals, policies and targets to incorporate lessons learned from the 2014 RTP. **Staff recommends that the Interagency Technical Advisory Committee provide input on the Goals, Policies and Targets of the 2040 RTP.**

Project Solicitation

The Action Element includes the complete list of transportation needs in the region. The transportation needs for the 2040 RTP and 2040 MTP will be solicited from the

project sponsors December through April, 2016. Project ideas will also be solicited from the Elderly and Disabled Technical Advisory Committee, the Bicycle Committee and the public. Any project ideas received from the public will be provided to the jurisdiction that is responsible for transportation projects in the location of interest.

Project sponsors should propose projects for inclusion in the RTP and MTP that advance the transportation plan goals and targets (**Attachment 3**), as well as address the SB375-mandated Sustainable Communities Strategy and Complete Streets needs.

As a first step towards developing the 2040 RTP and MTP project list, **RTC staff requests that the ITAC identify any projects on the 2014 RTP project list (**Attachment 4**) that will not be carried over to the 2040 RTP and MTP. Please provide the reason for removing the project from the list (e.g. project completed, no longer under consideration, not financially feasible, duplicate etc).**

SUMMARY

The RTC is responsible for developing the Regional Transportation Plan for Santa Cruz County. The next RTP will be a minor update to the 2014 RTP and is planned for adoption in June 2018 in coordination with AMBAG and the 2040 MTP/SCS. RTC staff would like input from ITAC on the draft goals, policies and targets for the 2040 RTP. RTC staff will be soliciting project sponsors in the coming weeks for updates to the transportation needs list based on the 2014 RTP project list. Staff recommends that ITAC members identify any projects on the 2010 RTP project list that will not be carried over to the 2014 RTP and MTP.

Attachments:

1. 2040 RTP Work Plan
2. 2040 RTP Schedule
3. Draft Goals, Policies and Targets
4. 2014 RTP Project List (project sponsors should bring a copy of list with projects crossed out that should not be carried over to 2040 RTP and MTP) -
Distributed to project sponsors separately

S:\RTP\2018-RTP\Staff Reports\ITAC\20151119

2040 Santa Cruz County Regional Transportation Plan Work Plan

1. *Coordination with Partner Agencies*
 - a. Meet regularly with Association of Monterey Bay Area Governments (AMBAG), Transportation Agency for Monterey County (TAMC), and San Benito Council of Governments (SbCOG) to discuss development of the 2040 Regional Transportation Plans (RTPs) and 2040 Metropolitan Transportation Plan/Sustainable Communities Strategy (MTP/SCS)
 - b. Provide data to AMBAG as necessary to incorporate Santa Cruz County projects into the AMBAG regional travel demand model (RTDM) and the AMBAG region 2040 MTP/SCS
 - c. Review draft 2040 MTP/SCS produced by AMBAG
2. *Public Outreach and Involvement*
 - a. Utilize the 2015 Public Participation Plan as developed by AMBAG that meets requirements of the California Transportation Commission RTP guidelines, SB 375 and MAP-21 requirements for public participation
 - b. Develop outreach materials throughout RTP development including fact sheets, web pages, web news, email notices, news releases
 - c. Encourage public participation on the main elements of the RTP, includes soliciting input from RTC Advisory Committees, interest groups, and the general public
 - d. Consult with resource agencies as required by the RTP Guidelines
 - e. Consult with local jurisdictions and other project sponsors
 - f. Coordinate public outreach effort with work on “Sustainable Transportation Prioritization Plan for Santa Cruz County” as funded by Caltrans through the Sustainable Communities grant funds
 - g. Coordinate public workshops with AMBAG regarding investment priorities for 2040 MTP/SCS
 - h. Analyze feedback and respond to comments received
 - i. Attend local and regional community events and meetings
3. *Review Policy Element - Goals, Policies and Targets*
 - a. Incorporate lessons learned from 2014 RTP
 - b. Incorporate MAP 21 performance measures as appropriate
 - c. Ensure policies are consistent with SCS
 - d. Review goals and policies with RTC, RTC committees, and the public
 - e. Recommend changes to goals and policies based on input received
 - f. Approve draft goals and policies and provide to AMBAG and EIR Consultant
4. *Update Financial Element – Revenue and Cost Projections*
 - a. Identify funding sources available (dedicated and discretionary), including sources used by project sponsors to operate, maintain, and construct transportation projects and programs
 - b. Identify any new funding options
 - c. Coordinate with AMBAG, TAMC and SbCOG to establish assumptions for financial projections
 - d. Update financial projections through 2040
 - e. Escalate project and services costs to expected year of delivery
 - f. Review funding projections and assumptions with RTC board
 - g. RTC provide input and approve draft financial element
 - h. Provide financial projections to AMBAG and EIR consultant

- i. Include updated discussion about state and federal funding eligibility trends based on reductions in gas consumptions and greenhouse gas emissions

5. *Update Action Element – Project List*

- a. Solicit project ideas and costs from local jurisdictions, public, RTC Advisory Committees
- b. Work with AMBAG to provide input on new database for organizing project lists and update project list database
- c. Develop complete list of projects (both constrained and unconstrained)
- d. Evaluate projects for consistency with goals and policies, SCS, and local plans
- e. RTC approves 2040 RTP complete project list
- f. Work with AMBAG on scenario analysis to differentiate financially constrained and unconstrained projects
- g. Create draft Constrained and Unconstrained Project Lists, with input from RTC
- h. Coordinate with AMBAG on public workshops for public input on constrained project list
- i. Seek input from local jurisdictions and RTC Advisory Committees on draft constrained project list
- j. RTC provide input and approve constrained project list
- k. Assign projects to five year time frames included in plan
- l. Map projects

6. *Plan Performance*

- a. The 2014 RTP included an analysis of how well the plan performed in advancing the goals/targets of the plan based on the financially constrained project list
- b. For the 2040 MTP/SCS, VMT and GHG measures will be analyzed by AMBAG using the regional travel demand model (RTDM) to assess ability to meet revised SB 375 targets for the AMBAG region
- c. Santa Cruz County VMT and GHG reductions will be provided by AMBAG from the RTDM results to assess performance of the 2040 RTP
- d. Baseline performance monitoring based on available data will be considered
- e. Other targets in RTP will not be analyzed for how well the plan performs as the 2040 RTP will be a minor update

7. *2040 RTP Document*

- a. Minor updates and revisions will be made to the 2014 RTP document, including name change to reflect target year to be consistent with the regional MTP
- b. Discuss revised California Air Resource Board Targets for AMBAG region
- c. Information from new transportation and related studies will be incorporated, where appropriate
- d. Previously collected data will be updated, as needed
- e. Revise text to address new state and federal requirements
- f. Release draft for public review
- g. Recommend changes for Final based on input received
- h. Prepare Final RTP

8. *Environmental Impact Report (EIR) Preparation*

- a. Agreement with AMBAG for EIR for the 2040 MTP/SCS and RTPs of Santa Cruz County, Monterey County and San Benito County
- b. Meet regularly with AMBAG, TAMC, SBCOG and consultant to discuss development of EIR for 2040 MTP/SCS and RTPs
- c. Review notice of preparation (NOP) for EIR
- d. Review draft EIR

9. *RTP and EIR Release and Distribution*

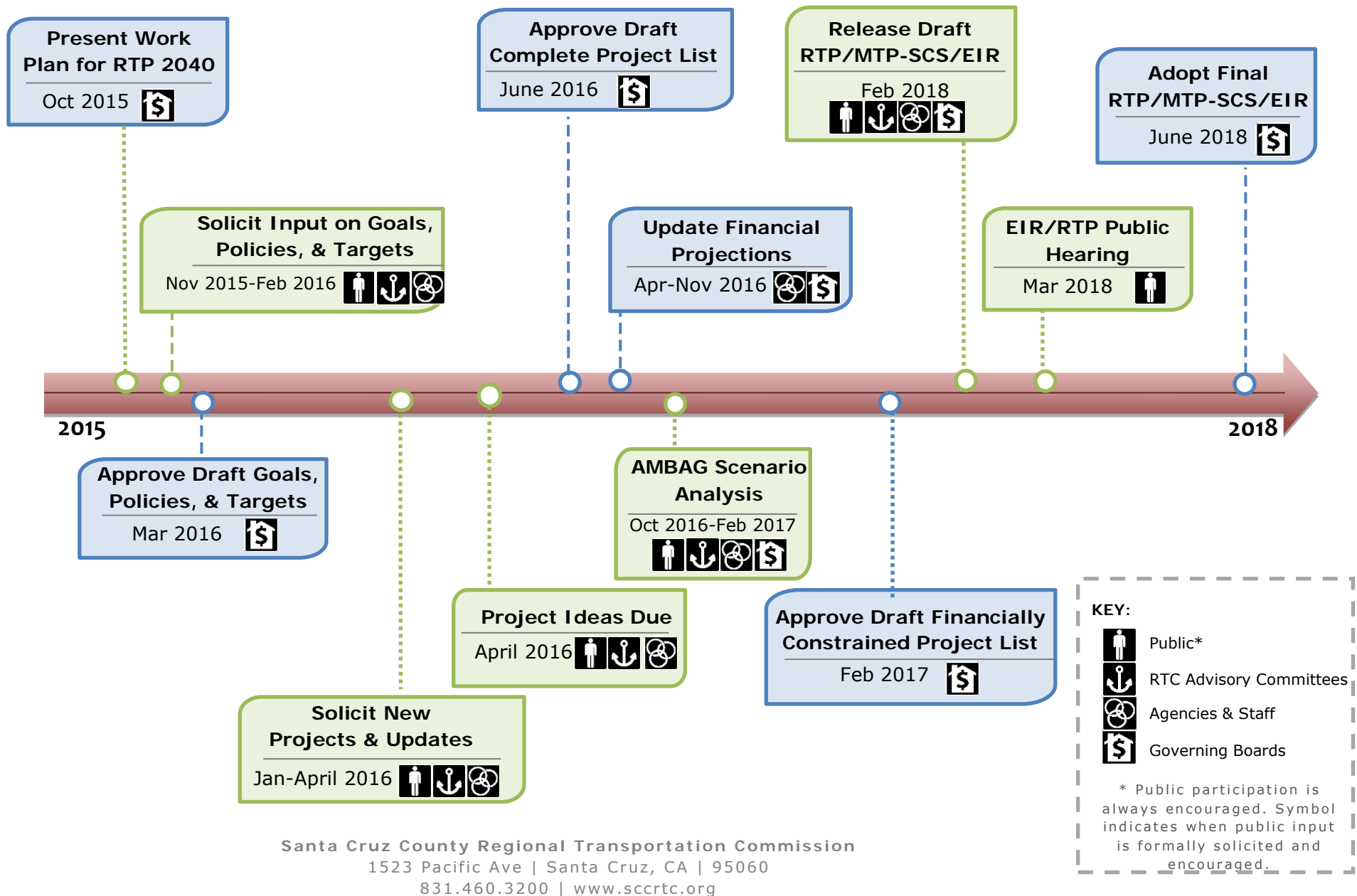
- a. Update distribution lists
- b. Send notice of availability to interested parties
- c. Focus on electronic distribution (web, email)
- d. Provide a minimum of 30 day review period
- e. Review draft RTP and EIR with RTC and RTC Committees
- f. Hold public hearing on RTP
- g. Receive and incorporate comments
- h. Present Final RTP/EIR Adoption
- i. Complete Notice of Determination

S:\RTP\2018-RTP\Staff Reports\RTCMarchAttachment_WorkPlanDraft.doc



2040 REGIONAL TRANSPORTATION PLAN

KEY MILESTONES



2040 Santa Cruz County Regional Transportation Plan Goals, Targets¹ and Policies

Note: The underline and strikethrough are the RTC staff recommended changes from the 2014 Regional Transportation Plan goals, policies, and targets.

➤ **GOAL 1. Improve people's access to jobs, schools, health care and other regular needs in ways that improve health, reduce pollution and retain money in the local economy.**

There is a strong relationship between meeting targets and achieving access, health, economic benefit, climate and energy goals. In many cases actions to achieve one goal or target will assist in achieving other goals and targets. For example, providing more carpool, transit and bicycle trips reduces fuel consumption, retains money in the local Santa Cruz County economy and reduces congestion.

TARGETS:

Improve people's ability to meet most of their daily needs without having to drive. Improve access and proximity to employment centers.

1A. Increase the percentage of people that can travel to key destinations² within a 30-minute walk, bike or transit trip by 20 percent by 2020 and ~~40-47~~ percent by ~~2035~~2040.³

Re-invest in the local economy by reducing transportation expenses from vehicle ownership, operation and fuel consumption. Reduce smog-forming pollutants and greenhouse gas emissions.

1B. Reduce per capita fuel consumption and greenhouse gas emissions by 1 percent by 2020, ~~and 5~~ percent by 2035 and 6 percent by 2040.⁴

1C. Re-invest in the local economy \$5 million/year⁵ by 2020 and ~~\$10-12~~ million/year by ~~2035~~2040 from savings resulting from lower fuel consumption due to a reduction in vehicle miles traveled.⁶

Improve the convenience and quality of trips, especially for walk, bicycle, transit, freight and carpool/vanpool trips.

1Di. Improve travel time reliability⁷ for vehicle trips.⁸

¹ Base years have been identified for most targets to allow for a comparative analysis. Base years vary by target between 2001 and 2010, depending on available data. Base years for the 2040 RTP are the same as the base years determined for the 2014 RTP.

² Key destinations consider employment and population centers, and multimodal trip destinations.

³ The targets are relative to the 2010 maximum population within the key destinations and will close the gap between the baseline population and maximum population by 20% by 2020 and 40% by 2035.

⁴ Through a reduction in vehicle miles traveled and improved speed consistency. These values may change based on the requirements of the California Air Resources Board for the AMBAG region.

⁵ 2012 dollars.

⁶ 10 million per year equates to \$100 per household per year. Assumes \$4 per gallon.

1Dii. Improve multimodal network quality⁹ for walk and bicycle trips to and within key destinations.¹⁰

Improve health by increasing the percentage of trips made using active transportation options, including bicycling, walking and transit.

1E. ~~Increase the number of active transportation trips by 5 percent of total trips by 2020 and by 20% of total trips by 2040. Decrease single occupancy mode share by 4 percent by 2020 and by 8 percent by 2035.~~¹¹

POLICIES:

- 1.1 *Transportation Demand Management (TDM):* Expand demand management programs that decrease the number of vehicle miles traveled and result in mode shift.
- 1.2 *Transportation System Management:* Implement Transportation System Management programs and projects on major roadways across Santa Cruz County that increases the efficiency of the existing transportation system.
- 1.3 *Transportation Infrastructure:* Improve multimodal access to and within key destinations.
- 1.4 *Transportation Infrastructure:* Ensure network connectivity by closing gaps in the bicycle, pedestrian and transit networks.
- 1.5 *Land Use:* Support land use decisions that locate new facilities close to existing services, particularly those that service transportation disadvantaged populations.

➤ **GOAL 2. Reduce transportation related fatalities and injuries for all transportation modes.**

⁷ Travel time reliability is important since being late to work, an appointment, or for a delivery has substantial repercussions for travelers and businesses. Literature from the Federal Highway Administration (FHWA) and many academic journals cite travel time reliability as a more important measure than average travel time between destinations because people must try to plan around the unpredictable nature of travel.

⁸ Qualitative target to be further developed in future planning effort.

⁹ Multimodal network quality for walk and bike trips considers roadways speeds, presence of bicycle and pedestrian facilities and buffers from traffic.

¹⁰ Qualitative target to be further developed in future planning effort.

¹¹ ~~The active transportation trip mode share for Santa Cruz County estimated from the 2012 California Household Travel Survey for all trips is 20%. The target is to double the active transportation mode share to 40% by 2040. An 8 percent decrease in single occupancy vehicle mode share includes increasing bicycle trip mode share to 10 percent and pedestrian mode share to 14 percent by 2035 and bicycle trip mode share to 6 percent and pedestrian trip mode share to 8 percent by 2020.~~

Safety is a fundamental outcome from transportation system investments and operations. Across the United States, pedestrians and bicyclists (vulnerable users) are killed and injured at a significantly higher rate than the percentage of trips they take.

TARGETS:

Improve transportation safety, especially for the most vulnerable users.

2A. Reduce injury and fatal collisions by mode by 20 percent by 2020 and by ~~50-60~~ percent by ~~2035~~2040.

2B. Reduce total number of high collision locations.¹²

POLICIES:

2.1 *Safety:* Prioritize funding for safety projects and programs that will reduce fatal or injury collisions.

2.2 *Safety:* Encourage projects that improve safety for youth, vulnerable users, and transportation disadvantaged.

2.3 *Emergency Services:* Support projects that provide access to emergency services.

2.4 *System Design:* Reduce the potential for conflict between bicyclists, pedestrians and vehicles.

➤ **GOAL 3. Deliver access and safety improvements cost effectively, within available revenues, equitably and responsive to the needs of all users of the transportation system, and beneficially for the natural environment.**

The manner in which access and safety outcomes referenced in Goal 1 and Goal 2 are delivered can impact cost-effectiveness, distribution of benefits amongst population groups, and ecological function.

TARGETS:

Maintain the existing system and improve the condition of transportation facilities.

3A. Increase the average local road pavement condition index to 57 by 2020 and ~~70-72~~ by ~~2035~~2040.

3B. Reduce the number of transportation facilities in “distressed” condition¹³ by 3 percent by 2020 and 5 percent by 2035.

Enhance healthy, safe access to key destinations for transportation-disadvantaged populations.

3C. Reduce travel times and increase travel options for people who are transportation disadvantaged due to income, age, race, disability or of limited English proficiency by

¹² Qualitative target to be further developed in future planning effort.

¹³ Includes street (pavement, sidewalks, bike lanes, and other road components) and transit facilities. “Distressed” pavement has a Pavement Condition Index under 50.

increasing the percentage that are within a 30-minute walk, bike or transit trip to key destinations by 20% by 2020 and ~~40~~47% by ~~2035~~2040.¹⁴

3D. Ensure transportation services (and impacts) are equitably distributed to all segments of the population.

Solicit broad public input.

3E. Maximize participation from diverse members of the public in RTC planning and project implementation activities.¹⁵

POLICIES:

- 3.1 *Cost Effectiveness & System Maintenance:* Maintain and operate the existing transportation system cost-effectively and in a manner that adapts the current transportation system to maximize existing investments.
- 3.2 *Coordination:* Improve coordination between agencies in a manner that improves efficiencies and reduces duplication (e.g. paratransit and transit; road repairs; signal synchronization; TDM programs).
- 3.3 *System Financing:* Support new or increased taxes and fees that reflect the cost to operate and maintain the transportation system.
- 3.4 *Equity:* Demonstrate that planned investments will reduce disparities in safety and access for transportation disadvantaged populations.
- 3.5 *Ecological Function:* Deliver transportation investments in a way that increases tree canopy, where appropriate, improves habitat and water quality, and enhances sensitive areas.
- 3.6 *Public Engagement:* Solicit broad public input on all aspects of regional and local transportation plans, projects and funding actions.

¹⁴ The targets are relative to the 2010 maximum population within the key destinations and will close the gap between the baseline population and maximum population by 20% by 2020 and 40% by 2035.

¹⁵ Qualitative target to be further developed in future planning effort.

2014 Regional Transportation Plan Project List

Constrained and Unconstrained Projects - Not Escalated

Projects listed by lead agency, in alphabetical order by project name.

Project IDs without the letter "P" in front of the number have been also included in the Regional Transportation Improvement Program.

"Constrained" represents amount of project cost that could be funded with revenues anticipated through 2035.

While some projects have secured funding, this amount does not typically represent committed funds. "Unconstrained" represents amount of project cost that would need additional funding in order to be implemented.

All Figures in year 2013, '000s (thousands of dollars)

Project Title	ID	Project Description/Scope	Est total cost	Constrained	Unconstrained
Caltrans					
Collision Reduction & Emergency Projects	CT-P46	Various SHOPP projects that address collision reduction, mandates (including stormwater mandates) and emergency projects. (Constrained=30% of total cost).	\$592,000	\$163,000	\$429,000
District 5 Vista Point Interpretive Display	CT-P44	Development and installation of interpretive displays at various vista point locations (EA05-0T500).	\$693	\$0	\$693
Hwy 17 Access Management/Corridor Study	CT-P41	Prepare a SR 17 study to determine long-range solutions to access, operations and safety on this route. Cost Est. TBD.	\$0	\$0	\$0
Hwy 17/Granite Creek Interchange Reconstruction	SV-P08	Realign/reconfigure the Granite Creek Road over crossing, add bike lanes and sidewalks. (EA 05-49380)	\$8,000	\$0	\$8,000
Hwy 9 Operational & Safety Improvements	CT-P09e	Corridor study to identify need for shoulder widening, turnouts for buses, and turn lanes at spot locations in SLV. Cost Est. TBD.	\$0	\$0	\$0
Minors	CT-P47	Various small SHOPP projects (less than \$1 million) that reduce/enhance maintenance efforts by providing minor operational, pavement rehab, drainage, intersection, electrical upgrades, landscape and barrier improvements. (Constrained=30% of total cost).	\$140,000	\$42,000	\$98,000
State Highway Preservation (bridge, roadway, roadside)	CT-P45	Various SHOPP projects that address bridge preservation, roadway & roadside preservation and limited mobility improvements. (Constrained=30% of cost to maintain).	\$428,000	\$128,000	\$300,000
Caltrans Total			\$1,168,693	\$333,000	\$835,693
CHP - California Highway Patrol					
Hwy 129 Safety Program	CHP-P03	Added CHP enforcement and public education campaign on Highway 129.	\$500	\$0	\$500
Hwy 17 Safety Program	CHP-P01	Continuation of Highway 17 Safety Program in Santa Cruz County at \$100/year. Includes public education and awareness, California Highway Patrol (CHP) enhancement, pilot cars, electronic speed signs.	\$2,200	\$2,200	\$0
Traffic Management	CHP-P02	Patrol of state route system and unincorporated roadways aimed at minimizing traffic collisions and traffic delays; and provide assistance to motorists. COST EST TBD.	\$0	\$0	\$0
CHP - California Highway Patrol Total			\$2,700	\$2,200	\$500
City of Capitola					
38th Ave (Capitola Rd to City limit to south)- Bike lanes/Traffic Calming	CAP-P45	38th Ave - Add bike treatments (such as buffered and/or painted bike lanes, bike boxes, bike signals), traffic calming and wayfinding signage from Capitola Mall to City Limit to south, and bike/ped priority crossing of Capitola Rd to Mall.	\$15	\$15	\$0

Project Title	ID	Project Description/Scope	Est total cost	Constrained	Unconstrained
40th Ave (at Deanes Ln)Bike/Ped connection	CAP-P46	40th Avenue N/S bike/pedestrian connection at Deanes Lane.	\$5	\$5	\$0
40th Ave/Clares St Intersection Improvements	CAP-P38	Widen intersection and signalize.	\$1,500	\$0	\$1,500
41st Ave (Soquel to Brommer) Signal Synchronization	CAP-P49	Update synchronization of signals on 41st. Coordinate synchronization of 41st Ave with Portola, Soquel, Capitola and Hwy 1 ramps with County.	\$15	\$15	\$0
41st Ave (Soquel to Portola) Crosswalks	CAP-P47	Evaluate and if found necessary, increase number of crosswalks on 41st to closer to every 300 ft.	\$15	\$15	\$0
41st Ave/Capitola Road Intersection Improvements	CAP-P37	Widen intersection and reconfigure signal phasing.	\$500	\$0	\$500
46th/47th Ave (Clares to Cliff Dr) Bike Lanes/Traffic Calming	CAP-P40	46th/47th from Clares to Portola/Cliff - Add traffic calming and wayfinding signage to connect to Brommer and MBSST.	\$15	\$15	\$0
47th Avenue Traffic Calming and Greenway	CAP-P30	Traffic calming and traffic dispersion improvements along 47th Ave from Capitola Rd to Portola Drive and implementation of greenway, which gives priority to bicycles and pedestrians on low volume, low speed streets including, pedestrian facilities, way finding and pavement markings, bicycle treatments to connect to MBSST.	\$100	\$100	\$0
Auto Plaza Drive Extension to Bay Avenue	CAP-P35	Extend Auto Plaza Drive over Soquel Creek to Bay Avenue. Includes improvements to Auto Plaza Drive.	\$10,000	\$0	\$10,000
Bay Avenue Traffic Calming and Bike/Ped Enhancements	CAP-P29	Traffic calming features along Bay Avenue from Highway 1 to Monterey Avenue, including left turn pocket, buffered pedestrian facilities and bicycle treatments (such as buffered and/or painted bike lanes, bike boxes, bike signals) to address speed inconsistency between bicyclists and vehicles.	\$400	\$400	\$0
Bay Avenue/Capitola Avenue Intersection Modifications/Roundabout	CAP 16	Multimodal improvements to intersection. Roundabout.	\$700	\$700	\$0
Bay Avenue/Hill Street Intersection	CAP-P07	Intersection improvements to improve traffic flow. Roundabout.	\$200	\$0	\$200
Bay Avenue/Monterey Avenue Intersection Modification	CAP-P32	Multimodal improvements to the intersection. Include signalization or roundabout along with pedestrian, bicycle treatments (such as buffered and/or painted bike lanes, bike boxes, bike signals) and transit access.	\$300	\$300	\$0
Brommer/Jade/Topaz St Bike Lanes/Traffic Calming (Western City Limit on Brommer to 47thAve)	CAP-P41	Add buffered bike lanes, traffic calming and wayfinding signage and bike/ped priority crossing at 41st Ave, connecting the two N/S neighborhood greenways.	\$15	\$15	\$0
Capitola Intra-City Rail Trolley	CAP-P18	Construct & Operate Weekend Rail Trolley Service. Project includes installation of 3 stations.	\$14,000	\$0	\$14,000
Capitola Jitney Transit Service	CAP-P15	Purchase and operate local transit service.	\$1,000	\$0	\$1,000
Capitola Mall (Capitola Rd to Clares) Bike Path	CAP-P48	Separated bicycle facility through Capitola Mall parking lot to connect 38th Ave bike lanes and 40th Ave.	\$50	\$50	\$0
Capitola Village Enhancements: Capitola Ave	CAP-P34	Multimodal enhancements along Capitola Avenue.	\$1,000	\$1,000	\$0
Capitola Village Multimodal Enhancements - Phase 2/3	CAP-P04b	Multimodal enhancements in Capitola Village along Stockton Ave, Esplande, San Jose Ave, & Monterey Av. Includes sidewalks, bike lanes, bike lockers, landscaping, improve transit facilities, parking, pavement rehab and drainage.	\$3,000	\$2,000	\$1,000

Project Title	ID	Project Description/Scope	Est total cost	Constrained	Unconstrained
Capitola-wide HOV priority	CAP-P50	Evaluate HOV priority at signals and HOV queue bypass.	\$40	\$40	\$0
Citywide Bike Projects	CAP-P52	Bike projects based on needs identified through the Bicycle Plan. These projects are in addition to projects listed individually in the RTP.	\$1,000	\$500	\$500
Citywide General Maintenance and Operations	CAP-P06	Ongoing maintenance, repair, and operation of road/street system within the City limits. (Const=\$400K/yr; Unconst=\$400K/yr).	\$17,600	\$17,600	\$0
Citywide Sidewalk Program	CAP-P51	Install sidewalks to fill gaps. Annual Cost \$50k/yr.	\$1,000	\$500	\$500
Citywide Traffic Calming	CAP-P17	Install traffic calming/neighborhood livability improvements.	\$1,400	\$0	\$1,400
Clares St Bike Lanes/Sharrows (Capitola Rd to 41st Ave)	CAP-P42	Evaluate and if found necessary, add bike lanes/sharrows to Clares.	\$5	\$5	\$0
Clares St/41st Ave Bicycle Intersection Improvement	CAP-P43	Bike treatments (such as buffered and/or painted bike lanes, bike boxes, bike signals) at Clares across 41st.	\$5	\$5	\$0
Clares Street Pedestrian Crossing west of 40th Ave	CAP-P16	Construct signalized ped x-ing 0.20 miles west of 40th Ave.	\$500	\$500	\$0
Clares Street Traffic Calming	CAP 11	Implementation of traffic calming measures: chicanes, center island median, new bus stop, and road edge landscape treatments to slow traffic. Construct new safe, accessible ped x-ing at 42nd and 46th Av.	\$425	\$425	\$0
Cliff Drive Improvements (combine with CAP 31 and 33)	CAP-P05	Installation of sidewalks, pedestrian crossing and slope stabilization of embankment including seawall.	\$1,500	\$0	\$1,500
Gross/41st Ave Bicycle Intersection Improvement	CAP-P44	Bike treatments (such as buffered and/or painted bike lanes, bike boxes, bike signals) from Gross E/B to 41st N/B.	\$15	\$15	\$0
Hwy 1/41st Avenue Interchange	CAP-P01	Implement 41st Avenue & Bay Ave/Porter Ave single interchange improvements as detailed and expensed in Hwy 1 HOV project (RTC 24) as a stand alone project if the RTC project does not proceed. (\$117M)	\$0	\$0	\$0
Monterey Avenue at Depot Hill	CAP-P28	Improve vehicle ingress and egress to Depot Hill along Escalona Ave and improve pedestrian facilities.	\$250	\$0	\$250
Monterey Avenue Multimodal Improvements	CAP-P12	Installation of sidewalks and bike lanes in area near school and parks.	\$350	\$350	\$0
Park Avenue Sidewalks	CAP 15	Installation of sidewalks, plus crosswalks at Cabrillo and Washburn to improve access to transit stops. Links Cliffwood Heights neighborhood to Capitola Village. Currently only 4 short segments of sidewalk exist.	\$500	\$500	\$0
Park Avenue/Kennedy Drive Improvements	CAP-P09	Construct intersection improvements. Traffic signal	\$350	\$0	\$350
Stockton Ave Bridge Rehab	CAP-P07p	Replace bridge with wider facility that includes standard bike lanes and sidewalks.	\$2,500	\$0	\$2,500
Upper Capitola Avenue Improvements	CAP-P03	Installation of bike lanes and sidewalks on Capitola Av. (Bay Av.-SR 1) and sidewalks on Hill St. from Bay Av. to Capitola Av.	\$1,300	\$1,300	\$0
Upper Pacific Cove Parking Lot Pedestrian Trail and Depot Park Metro Development	CAP 17	Construct 4 foot wide pedestrian pathway along City owned Upper Pacific Cove Parking lot, adjacent to rail line (680'). Includes new signal for ped crossing over Monterey Avenue. Includes a new metro shelter located and landscaped setting along the rail corridor/Park Ave.	\$300	\$300	\$0
Wheelchair Access Ramps	CAP-P27	Install wheelchair access/curb cut ramps on sidewalks citywide.	\$25	\$25	\$0

Project Title	ID	Project Description/Scope	Est total cost	Constrained	Unconstrained
City of Capitola Total			\$61,895	\$26,695	\$35,200
City of Santa Cruz					
Arana Gulch Bicycle/Pedestrian Connection (at Agnes St)	SC-P106	Bike and Pedestrian multi-purpose trail from Agnes to the Arana Gulch N-S Trail.	\$500	\$500	\$0
Arroyo Seco Trail (Medar St to Grandview St)	SC-P107	Pave exiting gravel trail and widen and pave connection to Grandview St.	\$280	\$0	\$280
Bay Street Corridor Modifications	SC-P77	Intersection modifications on Bay St Corridor from Mission St to Escalona Dr, including widening at the Mission St northeast corner and widening on Bay. Improve bike lanes and add sidewalks to west side of Bay.	\$4,000	\$4,000	\$0
Bay/California Traffic Signals	SC-P96	Install traffic signals for safety and capacity improvements.	\$500	\$250	\$250
Bay/High Intersection Modification	SC-P109	Install a roundabout or modify the traffic signal to include protected left-turns and new turn lanes. Revise sidewalks, access ramps and bike lanes as appropriate.	\$2,000	\$800	\$1,200
Beach/Cliff Intersection Signalization	SC-P93	Signalize intersection for pedestrian and train safety.	\$200	\$200	\$0
Branciforte Creek Bike/Ped Crossing	SC 46	Install a Class 1 bicycle/pedestrian bridge over Branciforte Creek and multi-use paths connecting the levee paths in the vicinity of San Lorenzo Park and Soquel Avenue	\$2,740	\$2,740	\$0
Branciforte Creek Pedestrian Path Connections	SC-P95	Fill gaps in pedestrian and bike paths along and across Branciforte Creek in the Ocean-Lee-Market-May Streets area.	\$3,300	\$1,650	\$1,650
Brookwood Drive Bike and Pedestrian Path	SC-P21	Provide 2-way bicycle and pedestrian travel.	\$1,000	\$1,000	\$0
Chestnut St. Pathway	SC-P22	Install a Class 1 bicycle/pedestrian facility to connect the east side of Neary Lagoon Park with the Depot Park path.	\$550	\$550	\$0
Chestnut Street Bike Lanes	SC-P47	Install Class 2 bike lanes to provide connection from existing bike lanes on Laurel Street and upper Chestnut Street to proposed Class 1 bike path connections to Bay Street and Pacific Avenue/Beach Street.	\$550	\$550	\$0
Citywide Operations and Maintenance	SC-P07	Ongoing maintenance, repair, and operation of street system within the City limits. (Const=\$3.0M/yr; Unconst=\$4.2M/yr)	\$158,400	\$106,420	\$51,980
Delaware Avenue Bike Lanes	SC-P23	Fill gaps in bicycle lanes.	\$50	\$50	\$0
High St/Moore St Intersection Modification	SC-P90	Add a protected left turn to existing signalized intersection along High St at city arterial. Project is located in high pedestrian and bicycle use activity area.	\$100	\$100	\$0
Hwy 1 - Harvey West Area Alternative Access	SC-P108	Development of an on/off ramp from NB Highway 1 to Harvey West Boulevard/Evergreen St, to improve access, especially during peak congestion times and emergencies.	\$4,000	\$0	\$4,000
Hwy 1 Sound Wall	SC-P03	Install sound wall on Hwy 1: River to Chestnut.	\$500	\$0	\$500

Project Title	ID	Project Description/Scope	Est total cost	Constrained	Unconstrained
Hwy 1/9 Intersection Modifications	SC 25	Intersection modifications including new turn lanes, bike lanes/shoulders. Includes adding second left-turn lane on Highway 1 southbound to Highway 9 northbound; second northbound through lane and shoulder on northbound Highway 9, from Highway 1 to Fern Street; a right-turn lane and shoulder on northbound Highway 9; through-left turn lane on northbound River St; replace channelizers on Highway 9 at the intersection of Coral Street; sufficient lane width along the northbound through/left turn lane on Highway 9 from Fern Street to Encinal Street; new sidewalk along the east side of Highway 9 from Fern Street north to Encinal Street; new through/left turn lane on southbound Highway 9; Traffic Signal interconnect to adjacent signals. (Caltrans project ID - EA05-46580)	\$6,200	\$6,200	\$0
Hwy 1/Mission St at Chestnut/King/Union Intersection Modification	SC-P81	Modify design of existing intersections to add lanes and upgrade the traffic signal operations to add capacity, reduce delay and improve safety. Provide access ramps and bike lanes on King and Mission. Includes traffic signal coordination.	\$4,500	\$4,500	\$0
Hwy 1/San Lorenzo Bridge Replacement	SC 38	Replace the Highway 1 bridge over San Lorenzo River to increase capacity, improve safety and improve seismic stability, from Highway 17 to the Junction of 1/9. Reduce flooding potential and improve fish passage. Caltrans project ID - EA05-0P460	\$15,800	\$2,355	\$13,445
King Street Bike Lanes (entire length)	SC-P59	Install Class 2 bike lanes on residential collector street which includes some parking and landscape strip removals, and some drainage inlet modifications.	\$2,000	\$2,000	\$0
King/Laurel Intersection Modification	SC-P114	Modify unsignalized intersection to add eastbound right turn lane.	\$100	\$50	\$50
Laurent/High Intersection Improvements	SC-P97	Install Traffic Signal.	\$400	\$200	\$200
Lump Sum Bike Projects	SC-P75	Bike projects based on needs identified through the Major Transportation Study and bike plan updates. These are in addition to projects listed individually in the RTP.	\$4,000	\$0	\$4,000
Market Street Sidewalks and Bike Lanes	SC-P105	Completion of sidewalks and bicycle lanes. Includes retaining walls, right-of-way, tree removals, and a bridge modification.	\$1,000	\$1,000	\$0
Measure H Road Projects	SC-P104	Road rehabilitation and reconstruction projects citywide to address backlog of needs using Measure H sales tax revenues. (Some Measure H funds anticipated to fund specific projects listed in the RTP).	\$23,000	\$23,000	\$0
Mission (Hwy 1)/Laurel Intersection Modification	SC-P112	Modify traffic signal to add right-turn from Mission to Laurel and signal overlap phase.	\$1,000	\$750	\$250
Mission (Hwy 1)/Swift Intersection Modification	SC-P113	Modify traffic signal to add Swift right-turn lane and signal overlap phase.	\$100	\$50	\$50
Morrissey Blvd. Bike Path over Hwy 1	SC-P29	Install a Class 1 bicycle and pedestrian facility on freeway overpass.	\$90	\$90	\$0
Morrissey/Poplar/Soquel Intersection Modification	SC-P12	Modify the roadway configuration in the Morrissey/Poplar/Soquel triangle area to improve traffic circulation and safety for all modes.	\$2,000	\$0	\$2,000
Mott St (at Hiawatha) Bike/Ped Connections	SC-P118	Add bike/ped connection from end of Mott to MBSST.	\$20	\$20	\$0
Murray St Bridge Replacement	SC 37	Seismic retrofit of existing Murray St. bridge (36C0108) over Woods Lagoon at harbor and associated approach roadway improvements and replacement of barrier rail. Includes wider bike lanes and sidewalk on ocean side. Include access paths to harbor if eligible.	\$11,070	\$11,070	\$0
Murray St to Harbor Path Connection	SC-P30	Install a Class 1 bicycle/pedestrian facility.	\$200	\$200	\$0
Neighborhood Traffic Management Improvements	SC-P73	Install traffic control devices and roadway design features to manage neighborhood traffic.	\$2,500	\$625	\$1,875

Project Title	ID	Project Description/Scope	Est total cost	Constrained	Unconstrained
North Branciforte/Water Intersection Modification	SC-P115	Modify traffic signal and add additional lanes per traffic study.	\$2,000	\$1,500	\$500
Ocean Street Corridor Multiuse Transit Lane	SC-P122	Consider restricting parking to develop business access and transit (BAT) lane to serve tourism and improving transit facilities.	\$400	\$400	\$0
Ocean St and San Lorenzo River Levee Bike/Ped Connections (Felker, Kennan, Blain, Barson Streets)	SC-P120	Improve pedestrian and bicycle facilities on side streets to connect Ocean Street with San Lorenzo River Levee path system.	\$600	\$600	\$0
Ocean St Pavement Rehabilitation (and Felker St)	SC 48	Pavement rehabilitation using cold-in-place recycling process; includes new curb ramps, restriping of bicycle lanes and crosswalks.	\$1,000	\$1,000	\$0
Ocean St Streetscape and Intersection, Plymouth to Water	SC-P86	Implement this phase of the Ocean Street plan and modify Plymouth St to provide separate turn lanes and through lanes, widen sidewalks, pedestrian islands/bulbouts, transit improvements, street trees, street lighting and medians landscaping improvements. This includes pedestrian and bicycle crossing improvements and detection and connectivity to the pedestrian and bicycle path on the San Lorenzo River and adjacent neighborhoods. Include Gateway treatment.	\$4,000	\$4,000	\$0
Ocean St Streetscape and Intersection, Water to Soquel	SC-P84	Implement this phase of the adopted Ocean Street plan including adding turn lanes on Ocean Street at the Water Street intersections, wider sidewalks, pedestrian crossing islands/bulbouts, transit improvements, street trees, pedestrian scale street lights, and medians improvements, way finding, and pedestrian and bicycle connectivity to San Lorenzo Park and neighborhoods.	\$6,000	\$6,000	\$0
Ocean Street Widening from Soquel to East Cliff	SC-P66	Implement this phase of the Ocean Street plan that includes utility undergrounding, bike lanes, wider sidewalks, pedestrian crossing islands/bulbouts, transit improvements, pedestrian scale street lights, street trees and left turn lanes at Broadway and a right-turn lane at San Lorenzo Blvd. This includes pedestrian and bicycle crossing improvements and detection and connectivity to the pedestrian and bicycle path on the San Lorenzo River and adjacent neighborhoods.	\$5,000	\$5,000	\$0
Ocean Street/San Lorenzo River Levee Area Wayfinding	SC-P124	Install signage on the bike/ped scale to bike/ped facilities connecting key destinations.	\$150	\$0	\$150
Park & Ride Lots	SC-P14	Construct park and ride lots within City limits.	\$20,000	\$0	\$20,000
Rail Trail: Segment 7 (Natural Bridges to Pacific Ave)	TRL 07SC	2.4 miles of Monterey Bay Sanctuary Scenic Trail Network (MBSST) Segment 7 (excluding Moore Creek rail trestle bridge and trail to Natural Bridges Drive) along rail line. One water crossing at Neary Lagoon (not a bridge), one rail crossing near Rankin Street and two at the Neary Lagoon "Y". Retaining structures adjacent to the Wastewater Treatment Facility and fifteen street crossings.	\$5,300	\$5,300	\$0
River (Rte 9)/Encinal Intersection Modification	SC-P111	Modify traffic signal to include new lane assignments on primarily on Encinal.	\$300	\$150	\$150
River (Rte 9)/Fern Intersection Modification	SC-P110	Install traffic signal, sidewalk and new access ramps. Provide bikelanes on Fern.	\$500	\$250	\$250
Riverside Ave/Second St Intersection Modification.	SC-P13	Modify intersection to reduce congestion and improve pedestrian crossing.	\$75	\$75	\$0
Riverside Avenue (Barson to Soquel)	SC-P121	Implement pedestrian and bicycle facilities on this low volume, low speed street to better connect and provide an alternative to Ocean Street. This could include way finding, pavement markings, bicycle treatments, and a ped/bike activated flashers at Riverside and Broadway.	\$200	\$200	\$0

Project Title	ID	Project Description/Scope	Est total cost	Constrained	Unconstrained
RiverSt/River Street South Intersection Modification	SC-P116	Install a roundabout or traffic signal to improve access and safety to the Downtown core, integrating bike and pedestrian facilities.	\$500	\$500	\$0
San Lorenzo River Bike/Ped Path at RR Bridge	SC-P31	Install a Class 1 bicycle/pedestrian facility to connect the east end of the Beach Street Pathway with East Cliff Drive at the location of the current railroad bridge over the San Lorenzo River and to connect the east and west banks of the San Lorenzo River Pathway. The crossing currently only accommodates pedestrians.(Expensed under RTC-27a, cost for standalone project is \$3,225K).	\$0	\$0	\$0
San Lorenzo River Levee Path Connection	SC-P35	Install a Class 1 bicycle/pedestrian facility connecting the end of the San Lorenzo River Levee path on the eastern side of the river, up East Cliff Drive near Buena Vista Ave.	\$2,000	\$2,000	\$0
Seabright Avenue Bike Lanes (Pine-Soquel)	SC-P69	Install Class 2 bike lanes on arterial street to complete the Seabright Avenue bike lane corridor and connect to bike lane corridor on Soquel Avenue and Murray. Includes removal of some parking and some landscape strips.	\$2,000	\$2,000	\$0
Seabright/Murray Traffic Signal Modifications	SC-P100	Remove split phasing on Seabright and add right-turn lane northbound.	\$1,000	\$1,000	\$0
Seabright/Water Intersection Improvements	SC-P99	Modify unsignalized intersection to add northbound right and extend left-turn pocket.	\$100	\$100	\$0
Shaffer Rd/Hwy 1 Signalization	SC-P92	Signalization of intersection of State Route 1 and Shaffer Rd. Project may includes some widening of Route 1 to accommodate a left turn lane.	\$500	\$0	\$500
Shaffer Road Widening and Railroad Crossing	SC-P91	Construction of a new crossing of the Railroad line at Shaffer Rd. and widening at the southern leg of Shaffer in conjunction with development. Complete sidewalks and bike lanes.	\$500	\$500	\$0
Sidewalk Program	SC-P09	Install and maintain sidewalks and access ramps.	\$20,000	\$8,000	\$12,000
Soquel Ave at Frederick St Intersection Modifications	SC 42	Widen to improve eastbound through-lane transition on Soquel Ave and lengthen right-turn pocket and bicycle lane on Frederick St. Upgrade access ramps.	\$300	\$300	\$0
Soquel Ave Corridor Widening (Branciforte-Morrissey)	SC-P87	Minor widening and signal modifications along Soquel Ave corridor from Branciforte to Morrissey Blvd to widen sidewalks, transit improvements, improve pedestrian and bicycle detection and crossings, add a travel lane, maintain some commercial parking and improve exiting bike lanes. Replacing the split phasing with protected left-turns at Branciforte to reduce delays for all modes of travel and GHG.	\$2,250	\$500	\$1,750
Soquel/Branciforte/Water (San Lorenzo River to Branciforte) Bike Lane Treatments	SC-P123	Consider bike treatments (such as buffered and/or painted bike lanes, bike boxes, bike signals) to address speed inconsistency and parking conflicts between bicyclists and vehicles.	\$400	\$400	\$0
Soquel/Water (Branciforte to Morrissey) Crosswalks	SC-P119	Evaluate and if found necessary implement additional crosswalks on Soquel/Water striving for 300 ft distance between crosswalks with consideration for safety, update crosswalks to more visible pattern (block).	\$100	\$100	\$0
Storey/King Street Intersection Left-Turn Lane	SC-P76	Remove parking and modify striping for second southbound left turn lane.	\$100	\$0	\$100
Swift/Delaware Intersection Roundabout or Traffic Signal	SC-P101	Install Traffic Signal or Roundabout at Intersection to improve capacity and safety.	\$1,000	\$500	\$500
Water St (add Branciforte and Center) Signal Synchronization	SC-P117	Synchronize signals on Water to include Branciforte and Center to existing synchronized signals.	\$200	\$200	\$0
West Cliff Path Minor Widening (Lighthouse to Swanton)	SC 23	Improve existing path.	\$500	\$500	\$0

Project Title	ID	Project Description/Scope	Est total cost	Constrained	Unconstrained
West Cliff/Bay Street Modifications	SC-P83	Signalization at all-way stop controlled intersections.	\$300	\$225	\$75
City of Santa Cruz Total			\$329,925	\$212,220	\$117,705
City of Scotts Valley					
Bean Creek Rd Sidewalks (SVMS to Blue Bonnet)	SV-P35	Fill gaps in sidewalks on Bean Creek Rd.	\$400	\$400	\$0
Bean Creek Road Realignment	SV-P16	Realign Bean Creek Road to intersect Scotts Valley Drive farther North to create a four way intersection.	\$2,750	\$0	\$2,750
Bike Rest Stops in Scotts Valley	SV-P38	Bike rest stops (including racks, water) at Camp Evers Park and Skypark.	\$225	\$0	\$225
Bluebonnet Lane Bike Lanes	SV-P32	Add bike lanes on Bluebonnet (Bean Ck, through Skypark to Mt. Hermon/Lockwood).	\$150	\$150	\$0
Citywide Access Ramps	SV-P06	Place handicap ramps at various locations. Avg annual cost: \$8K/yr.	\$200	\$200	\$0
Citywide Bike Lanes	SV-P41	Construction of additional bike lanes and paths citywide (including Green Hills).	\$3,000	\$0	\$3,000
Citywide General Maintenance and Operations	SV-P27	Ongoing maintenance, repairs, and operation of road/street system within the City limits. (\$400K/yr const; \$250/yr unconst).	\$14,300	\$12,400	\$1,900
Citywide Sidewalk Program	SV-P05	Install sidewalks to fill gaps. Annual Cost \$50k/yr	\$5,000	\$1,250	\$3,750
Civic Center Dr Bike Lanes	SV-P33	Add bike lanes to narrow road.	\$400	\$0	\$400
El Pueblo Rd Ext North	SV-P14	Connect El Pueblo Road via Janis Way to Victor Square, crossing Carbonero Creek.	\$1,200	\$0	\$1,200
El Pueblo Rd Extensions	SV-P15	Connect El Pueblo Road to Disc Drive.	\$400	\$0	\$400
El Rancho Dr Bike Lanes	SV-P36	Add bike lanes on El Rancho within city limits.	\$325	\$0	\$325
Emergency Access Granite Creek/Hwy 17	SV-P24	Connect Granite Creek Rd to SR 17 via Navarra Drive to Sucinto Drive, for emergency access.	\$550	\$0	\$550
Emergency Access SV DR/Upper Willis Dr	SV-P25	Connect Scotts Valley Drive to Upper Willis Road for emergency access.	\$1,000	\$0	\$1,000
Emergency Access Whispering Pines	SV-P26	Connect Whispering Pines Drive to Manana Woods for emergency access.	\$50	\$0	\$50
Emergency Access-Bethany/Glenwood	SV-P23	Connect Bethany Drive to Glenwood Drive.	\$200	\$0	\$200
Emergency Access-Sundridge/Pueblo	SV-P22	Connect Sunridge Drive to Disc Drive for emergency access.	\$400	\$0	\$400
Erba Lane/Terrace View/SV Drive Realignment	SV-P10	Realign Terrace View to access Scotts Valley Drive via Erba Lane.	\$500	\$0	\$500
Glen Canyon Rd Bike Lanes	SV-P29	Class 2 Bike lanes from Flora Lane to Green Hills. Oak Creek to Flora Ln are already complete.	\$1,000	\$0	\$1,000
Glenwood Dr Bike Lanes	SV-P39	Widen road to accommodate bike lanes from Scotts Valley High School to City limits.	\$500	\$500	\$0
Green Hills Road Bike Lanes	SV-18A	'Bike lanes from Green Hills Est. to Sequoia. Serves: Baymonte Chrn, Vine Hill ES, Scotts Vly MS, HS, & Brook Knoll Schools.	\$700	\$700	\$0
Hwy 17/Midtown Interchange	SV-P01	Construct new SR17 interchange midway between Mt. Hermon Rd and Granite Creek Rd. Will require right-of-way.	\$30,000	\$0	\$30,000

Project Title	ID	Project Description/Scope	Est total cost	Constrained	Unconstrained
Kings Village Rd/Town Center Entrance Traffic Signal	SV-P52	Install new traffic signal at the intersection of Kings Village Rd and new Town Center entrance (near transit center) with protected pedestrian crossings and transit signal priority. New Signalization of the intersection on Kings Village Rd at the transit center exit and future Plan street connection would provide a location for protected pedestrian crossings, and would allow transit operators to easily exit the transit center and maintain operating schedules.	\$200	\$100	\$100
Lockhart Gulch Rd Bike Lanes	SV-P37	Add Class 2 bike lanes to narrow, primarily residential street.	\$700	\$0	\$700
Lockwood Lane Sidewalk and Bike Lanes	SV-P40	Construct Bike Lanes and add sidewalk on the west side from Mt. Hermon to the City limit.	\$500	\$500	\$0
Lockwood Ln Pedestrian Signal Near Golf Course	SV-P21	Construct a pedestrian signal at unprotected ped crossing on Lockwood Lane.	\$50	\$50	\$0
Mt Hermon Rd and Scotts Valley Drive - Crosswalks	SV-P49	Increase number of crosswalks on Mt Hermon/Scotts Valley Dr, update crosswalks to block pattern, add pedestrian treatments where necessary at intersections to decrease distance across using refuge islands. Add crosswalks to all sides of intersections (particularly an issue on Scotts Valley Dr). Add HAWK signals to provide a low delay signalized crossing opportunity at select locations. Examples include the Safeway Driveway on Mt. Hermon Rd, at Victor Square/Scotts Valley Dr., and at Trammel Way/Scotts Valley Dr.	\$1,000	\$500	\$500
Mt Hermon Rd to El Rancho Drive Bike/Ped Connection	SV-P53	New bike/ped connection between Mt Hermon Road and El Rancho Drive which could include improved bike/ped facilities on existing interchange or new bike/ped crossing.	\$1,000	\$0	\$1,000
Mt Hermon Rd/ Spring Hill Road Pedestrian Intersection Improvements	SV-P54	Improve pedestrian crossing at Spring Hills Drive and Mt. Hermon Road.	\$50	\$50	\$0
Mt Hermon Road Sidewalk Connections	SV-P30A	Add sidewalks to fill gaps in business district.	\$500	\$500	\$0
Mt Hermon, Lockwood, Springs Lake Widening	SV-P13	Widen, reconstruct and improve portions of roadway and intersection.	\$4,000	\$0	\$4,000
Mt Hermon/King's Village Rd-Transit Signal priority	SV-P46	Transit signal priority at Kings Village Rd/Mt Hermon Rd.	\$75	\$75	\$0
Mt Hermon/Scotts Valley - Intersection Improvements for Bicycle Treatment	SV-P50	Add bicycle treatments at Mt Hermon/Scotts Valley Dr intersection.	\$10	\$10	\$0
Mt Hermon/Scotts Valley - Transit Queue Jump	SV-P47	Evaluate and if found to be beneficial, remove right turn islands at Mt Hermon Rd/Scotts Valley Road to add transit queue jump lanes/signals.	\$600	\$600	\$0
Mt. Hermon Rd Circulation Master Plan	SV-P09	Provides various circulation and access improvements to the Mount Herman corridor.	\$3,500	\$0	\$3,500
Mt. Hermon Rd./Hwy 17 Ramps Intersection Operations Improvement Project	SV-P44	Add lane to SB off-ramp at Mt. Hermon/SR-17 interchange.	\$1,000	\$0	\$1,000
Mt. Hermon Rd/Scotts Valley Dr/Whispering Pines Dr Intersection Operations Improvement Project	SV 27	Add a left turn lane from northbound Mt. Hermon Rd. to eastbound Whispering Pines Dr, modify existing signal, construct curb, gutter, sidewalk and curb ramps, modify striping and pavement markings, resynchronize intersection timing, and repave intersection area.	\$434	\$434	\$0

Project Title	ID	Project Description/Scope	Est total cost	Constrained	Unconstrained
Mt. Hermon Road/Town Center Entrance Traffic Signal	SV-P51	Install new traffic signal at the intersection of the future Town Center road that will accommodate increased pedestrian travel. Add a right-turn lane on the westbound approach. New signalization of the intersection at the future Town Center's primary access point on Mt. Hermon Road would provide protected pedestrian crossing, ADA accessible curb ramps and detectable surfaces on all intersection corners. Permitted left-turn phasing shall be used for the northbound and southbound approaches, while protected left-turn phasing shall be provided on the eastbound and westbound Mt. Hermon Road approaches.	\$250	\$125	\$125
N. Navarra Dr-Sucinto Dr Bike Lanes	SV-P34	Add bike lanes to developing area behind commercial.	\$600	\$0	\$600
Neighborhood Traffic Calming	SV-P28	Citywide traffic calming devices.	\$750	\$750	\$0
Scotts Valley Town Center Bicycle/Pedestrian Facilities	SV-P45	Bicycle and pedestrian facilities and circulation elements within planned development.	\$4,000	\$2,000	\$2,000
Scotts Valley-wide - Greenway Signage	SV-P48	Add signage for neighborhood greenways.	\$20	\$0	\$20
Sky Park Commercial Area Circulation	SV-P11	Construct infrastructure improvement for Skypark commercial area.	\$2,000	\$0	\$2,000
Synchronize Traffic Signals along Mt. Hermon Road	SV-P42	Re-time to coordinate traffic signals along Mt. Hermon Road.	\$100	\$100	\$0
City of Scotts Valley Total			\$84,589	\$21,394	\$63,195
City of Watsonville					
2nd/Maple Ave (Lincoln to Walker) Traffic Calming and Greenway	WAT-P49	Evaluate and if found necessary, add traffic calming/bicycle traffic priority with wayfinding signage to provide access to MBSST and create low stress grid around downtown.	\$15	\$15	\$0
5th St (Lincoln to Walker) - Traffic Calming and Greenway	WAT-P50	Evaluate and if found necessary, add traffic calming/bicycle traffic priority with wayfinding signage to provide access to MBSST and create low stress grid around downtown.	\$15	\$15	\$0
Airport Blvd Improvements (Freedom Blvd to City Limits)	WAT 38	Road widening to accommodate extension of bicycle lane and portion of travel lane, installation of bus pull out, new sidewalks and curb ramps, refuge island, rectangular flashing beacan, striping, and roadway rehab.	\$1,286	\$1,286	\$0
Airport Blvd Modifications (Hanger Way to Ross Ave)	WAT-P34	Reconstruct or repave roadway and bikelanes; repair, replace and install curb, gutter, sidewalk and curb ramps; replace and upgrade signage and striping.	\$500	\$0	\$500
Airport Boulevard Improvements: Westgate/Larkin to Hanger Way	WAT 40	Reconstruct roadway, install new sidewalk, upgrade curb ramps and driveway crossings, install median islands, modify traffic signals to include add'l ped crossing and install rectangular rapid flashing beacon at crosswalk.	\$1,500	\$1,500	\$0
Alley Improvements	WAT-P36	Repair & reconstruct some alleys.	\$50	\$50	\$0
Bridge Maintenance	WAT-P35	Maintenance of bridges	\$100	\$100	\$0
Buena Vista/Calbasas/Freedom Connection	WAT-P30	Construction of roadway connection from Buena Vista area to Freedom Blvd. Reconstruct Via Nicola.	\$5,000	\$0	\$5,000
Citywide General Maintenance and Operations	WAT-P06	Ongoing maintenance, repair, and operation of road/street system, including bicycle and pedestrian facilities.(Total Need = \$2,500/year, constr=\$2000/yr)	\$55,000	\$48,000	\$7,000
Citywide Pedestrian Facilities	WAT-P15	Construct sidewalks and curb ramps where necessary. This work is usually combined with the annual road rehabilitation and maintenance projects. Avg annual cost: \$100/yr.	\$2,000	\$1,000	\$1,000

Project Title	ID	Project Description/Scope	Est total cost	Constrained	Unconstrained
Citywide Transportation Projects	WAT-P24	Lump sum of transportation projects to be identified in the future. Including major rehabilitation and operational improvements (\$1.2M/yr).	\$24,000	\$0	\$24,000
Crestview/Wagner Extension	WAT-P29	Construction of roadway connection from Atkinson Lane area to SR 152. Reconstruct/widen Wagner St.	\$4,000	\$0	\$4,000
Downtown Watsonville Universal Streets	WAT-P59	Evaluate and if feasible, implement universal streets, which are designed for pedestrians and restrict vehicular access, which facilitate new ped access.	\$500	\$500	\$0
East Fifth St (Main St to Lincoln St)	WAT-P39	Repair, replace and install curb, gutter, sidewalk and curb ramps; replace and upgrade signage and striping.	\$250	\$250	\$0
East Lake/Hwy 152 Widening (Martinelli-Holohan)	CT-P33	Widen East Lake Av. (SR 152) from 2 to 4 lanes (Martinelli St-Holohan).	\$1,000	\$0	\$1,000
East Lake/Madison - ped crossing	WAT-P57	Evaluate and if feasible, add pedestrian crossing (HAWK signal if ped volume warrants) at E Lake & Madison for better access to Hall Middle School.	\$250	\$250	\$0
Freedom Blvd (Green Valley Rd to Davis) Bicycle and Pedestrian Improvements	WAT-P61	Evaluate and if feasible, install bike treatments (such as buffered and/or painted bike lanes, bike boxes, bike signals) to address speed inconsistency between bicyclists and vehicles. Complete sidewalks, including pedestrian buffer, and pedestrian islands at crossings.	\$250	\$250	\$0
Freedom Blvd Improvements (Green Valley Rd to Compton Terrace)	WAT-P11	Pavement reconstruction, operation improvements (turn lanes), installation of bike lanes, sidewalks, signing and striping. Evaluate and if feasible, install bike treatments (such as buffered and/or painted bike lanes, bike boxes, bike signals) to address speed inconsistency between bicyclists and vehicles. Complete sidewalks, including pedestrian buffer, and pedestrian islands at crossings.	\$5,000	\$2,000	\$3,000
Freedom Blvd Pedestrian Crossings (Airport to Lincoln)	WAT-P62	Evaluate and if feasible, install new and improve existing uncontrolled pedestrian crossings at Roach Road, Davis Avenue, Clifford Lane, Mariposa Avenue, Alta Vista Street, Crestview Drive, Martinelli Street and Marin Street).	\$500	\$500	\$0
Freedom Blvd Reconstruction - Phase 3 (Alta Vista to Davis)	WAT-P33	Pavement reconstruction, operation improvements (turn lanes), installation of bike lanes, sidewalks, signing and striping. Evaluate and if feasible, install bike treatments (such as buffered and/or painted bike lanes, bike boxes, bike signals) to address speed inconsistency between bicyclists and vehicles. Complete sidewalks, including pedestrian buffer, and pedestrian islands at crossings.	\$2,500	\$0	\$2,500
Freedom Blvd Reconstruction (Broadis St to Alta Vista Ave)	WAT 39	Full depth rehab (reuse existing materials), relocate utilities, concrete pads at bus stop, signage and striping, ADA upgrades to curbs and driveways. Evaluate and if feasible, install bike treatments (such as buffered and/or painted bike lanes, bike boxes, bike signals) to address speed inconsistency between bicyclists and vehicles. Complete sidewalks, including pedestrian buffer, and pedestrian islands at crossings.	\$1,000	\$1,000	\$0
Freedom Blvd Undergrounding	WAT-P38	Underground existing overhead utilities.	\$1,230	\$1,230	\$0
Freedom Blvd/Green Valley Rd Neighborhood Bike/Ped Connections	WAT-P64	Evaluate and if feasible, implement greenway, which gives priority to bicycles and pedestrians on low volume, low speed streets including, pedestrian facilities, way finding and pavement markings, bicycle treatments to connect neighborhoods to goods and services on Freedom Blvd.	\$1,500	\$0	\$1,500
Green Valley Rd Modifications (Freedom Blvd to City Limit)	WAT-P45	Reconstruct or repave roadway and bikelanes; repair, replace and install curb gutter, sidewalk and curb ramps; replace and upgrade striping. Evaluate and if feasible, including pedestrian buffer and bike treatments (such as buffered and/or painted bike lanes, bike boxes, bike signals).	\$1,750	\$1,750	\$0

Project Title	ID	Project Description/Scope	Est total cost	Constrained	Unconstrained
Green Valley Rd Modifications (Struve Slough to Freedom Blvd)	WAT-P44	Reconstruct or repave roadway and bikelanes; repair, replace and install curb, gutter, sidewalk and curb ramps; replace and upgrade signage and striping.	\$1,400	\$1,400	\$0
Hillside Ave to Freedom Blvd Ped/Bike Connection	WAT-P60	Evaluate and if feasible, install new bike/ped connection from Carey Avenue to Freedom Boulevard between Roache Road and Green Valley Road to connect neighborhood to goods, services and transit on Freedom Boulevard. Include new crossing from new bicycle/pedestrian facility to east side of Freedom Boulevard.	\$300	\$0	\$300
Hwy 1/Harkins Slough Road Corridor Improvements	WAT 01A	Installation of a signal at the northbound Highway 1 Off ramp at Harkins Slough Road; Signal modifications and operational improvements along Harkins Slough Road/Green Valley Road corridor, beginning at Highway 1 Off ramp to Main Street (SR 125); Construction of Pedestrian/Bicycle Bridge over Highway 1. (formerly part of Caltrans Project ID - EA05-44130 and WAT 01).	\$8,600	\$8,600	\$0
Kearney/Rodriguez - Ped Crossing	WAT-P53	Evaluate and if found necessary, add pedestrian crossing at Kearney and Rodriguez with traffic calming for access to Radcliffe Elementary.	\$25	\$25	\$0
Lower Watsonville Slough Trail	WAT-P46	Install bicycle/pedestrian trail	\$650	\$650	\$0
Lump Sum Bicycle Projects	WAT-P19	Update the City Bicycle Plan and construction of additional routes and paths (250k/yr).	\$5,000	\$0	\$5,000
Main St - 3 HAWK Signals	WAT-P54	Evaluate and if found necessary, add Hawk signals in 3 locations on Main St.	\$750	\$750	\$0
Main St (Freedom to Riverside) Ped/Bike Enhancements	WAT-P58	Evaluate and if feasible improve ped facilities and bike treatments (such as buffered and/or painted bike lanes, bike boxes, bike signals) and bike boxes and bicycle priority at intersections on Main Street intersections.	\$750	\$750	\$0
Main St Modifications (500 Block: Fifth St to East Lake Ave)	WAT-P40	Repair, replace and install curb, gutter, and curb ramps; replace and upgrade signage and striping. Evaluate and if feasible, provide bike treatments (such as buffered and/or painted bike lanes, bike boxes, bike signals), and buffered sidewalk.	\$600	\$600	\$0
Main St Modifications (City Limit to Lake Ave)	WAT-P47	Repave roadway and bike lanes; repair, replace and install curb, gutter, sidewalk and curb ramps; replace and upgrade signage and striping. Evaluate and if feasible, provide bike treatments (such as buffered and/or painted bike lanes, bike boxes, bike signals) and buffered sidewalks.	\$1,400	\$1,400	\$0
Main St. (Hwy 152)/Freedom Blvd Roundabout	WAT 27a	Installation of a roundabout to replace the currently signalized intersection with safety considerations for bike/ped. Caltrans Project ID - EA05-0T150.	\$1,250	\$1,250	\$0
Main/Beach/Lake Ave Bike Facilities	CT-P38	Bicycle facilities - Main St (GV Rd to Mont Co line), Beach St (Walker to Lincoln) and Lake Ave (Main St to fairgrounds). County/City Project - Cost unknown.	\$0	\$0	\$0
Main/Rodriguez/Union/Brennan (Freedom to Riverside) - Crosswalks	WAT-P55	Evaluate and if found necessary, increase the number of crosswalks on Main St, Rodriguez, and Union/Brennan to aim for 300 ft distance between crossings. Update pattern of crosswalks to block pattern.	\$100	\$100	\$0
MBSST Rail Trail: Lee Road, 4000 feet east to City Slough Trail connection	TRL 18L	Construction of 4000-foot long pathway parallel to the railroad tracks: eight-foot width asphalt (hma) and two-foot base rock shoulders on each side. A 500 foot long retaining wall up to three foot tall with fence will be needed near Lee Road. A four foot by six foot railroad building at the Ohlone Parkway will need to be relocated. A drainage structure east of Ohlone Parkway will need to be modified. Connection to Lee Road shall require installation of pathway or sidewalk to link to the existing sidewalk. At grade crossing at Ohlone Parkway and at a spur line located between Lee Road and Highway 1.	\$1,300	\$1,300	\$0

Project Title	ID	Project Description/Scope	Est total cost	Constrained	Unconstrained
Neighborhood Traffic Plan	WAT-P04	Plan to identify and address concerns regarding speeding, bicycle and pedestrian access and safety, and other neighborhood traffic issues (\$5k/yr).	\$100	\$100	\$0
Neighborhood Traffic Plan Implementation	WAT-P13	Address concerns about traffic complaints through Education, Enforcement, and Engineering solutions. Install traffic calming devices that do not impede bicyclist access (\$20k/yr).	\$400	\$400	\$0
Ohlone Parkway Improvements - Phase 2 (UPRR to West Beach)	WAT-P31	Roadway, pedestrian, and bicycle facilities.	\$500	\$500	\$0
Pajaro Lane to Freedom Blvd Ped/Bike Connection	WAT-P63	Evaluate and if feasible, new bike/ped connection from Pajaro Lane to Freedom Blvd to connect neighborhood to goods, services and transit on Freedom Boulevard. Include new crossing from new bicycle/pedestrian facility to west side of Freedom Boulevard.	\$300	\$0	\$300
Pajaro Valley High School Connector Trail	WAT-P42	Install bicycle/pedestrian trail (this trail connects Pajaro Valley High School to Airport Blvd).	\$600	\$600	\$0
Pennsylvania Dr/Clifford St Roundabout	WAT-P37	Installation of roundabout at existing stop sign controlled intersection.	\$250	\$250	\$0
Riverside Bike Facilities	CT-P39	Bicycle facilities - Lee to Lakeview Road. County/City Project -Cost Unknown.	\$0	\$0	\$0
Riverside Drive/Hwy 129 Widening (Union-Bridge St)	CT-P32	Widen Riverside Drive (SR 129) from 2 to 4 lanes, reconstruct existing street (Union St to Bridge St.)	\$8,000	\$0	\$8,000
Rodriguez St (Main St to Riverside)-Buffered Bike Lane	WAT-P51	Evaluate and if found necessary, improve bike lane striping, add buffered lanes on Rodriguez St to delineate bike lane from vehicle parking and traffic.	\$10	\$10	\$0
Sidewalk Infill Harkins Slough Road and Main Street	WAT 41	Harkins Slough: 6 ft wide x 180 ft long sidewalks on south side of Harkins Slough Rd and east of Ohlone Pkwy; Main St: 6 ft wide x 450 ft long sidewalks on north side of Main St from Pennsylvania Dr-Pacifica Blvd	\$200	\$200	\$0
Union/Brennan (Freedom to Riverside) - Sharrows	WAT-P52	Evaluate and if found necessary, add sharrows to Union/Brennan.	\$5	\$5	\$0
Upper Struve Slough Trail	WAT-P65	Construction of 450 foot long pedestrian/bicycle path along upper Struve Slough from Green Valley Road to Pennsylvania Drive. The trail shall consist of a twelve-foot wide by one foot deep aggregate base section with the center eight feet covered with a chip seal. Additional improvements include installing a 130-length of modular concrete block retaining wall, reinforcing a 160-foot length of slough embankment with rock slope protection and installing a 175-foot long by eight foot wide boardwalk.	\$450	\$0	\$450
Upper Watsonville Slough Trail	WAT-P43	Install bicycle/pedestrian trail.	\$650	\$650	\$0
Walker St Modifications (Beach St to Watsonville Slough)	WAT-P48	Repave roadway and bikelanes; repair, replace and install curb, gutter, sidewalk and curb ramps; replace and upgrade signage and striping	\$2,700	\$0	\$2,700
Watsonville Shuttle	WAT-P27	Year round public transit service.	\$250	\$0	\$250
Watsonville-wide HOV priority	WAT-P56	Evaluate HOV priority at signals and HOV queue bypass.	\$50	\$50	\$0
West Lake Ave Modifications (Main St to Rodriguez St)	WAT-P41	Repair, replace and install curb, gutter, sidewalk and curb ramps; replace and upgrade signage and striping	\$200	\$0	\$200
City of Watsonville Total			\$145,986	\$79,286	\$66,700

Project Title	ID	Project Description/Scope	Est total cost	Constrained	Unconstrained
Consolidated Transportation					
Countywide Specialized Transportation	CTSA-P01	Non-ADA mandated paratransit and other specialized transportation service for seniors and people with disabilities. Includes medical service rides, Elderday, out-of-county rides, Sr. Meal Site, Taxi Script, etc. Current avg annual need \$2.5M. Constrained=\$1.4M.	\$55,000	\$32,460	\$22,540
Lift Line Maintenance/Operations Center	CTSA-P02	Construct a permanent maintenance center/consolidated operations facility for paratransit program (currently Lift Line).	\$15,000	\$0	\$15,000
Medically Fragile Specialized Transportation	CTSA-P04	Non-emergency same day transportation service for medically fragile individuals. Includes operations and capital.	\$13,000	\$0	\$13,000
Non-ADA Paratransit Service Expansion	CTSA-P03	Expansion of non-ADA paratransit system to meet needs of growing elderly and disabled populations. May include pre/post natal transport to medical appointments.	\$21,000	\$0	\$21,000
Consolidated Transportation Total			\$104,000	\$32,460	\$71,540
County Health Services Agency					
Santa Cruz County Health Service Agency - Traffic Safety Education	CO 50	Ongoing education program to decrease the risk and severity of collisions. Includes bicycle and pedestrian programs: Community Traffic Safety Coalition, South County coalition, and Ride n' Stride Bicycle/Pedestrian Education Program.	\$6,250	\$2,138	\$4,113
Santa Cruz County Open Streets	VAR 01	Community events promoting alternatives to driving alone as part of a sustainable, healthy, and active life-style. Temporarily opens roadways to bicycle and pedestrian travel only, diverting automobiles to other roadways.(Average annual cost - \$100k/yr)	\$2,000	\$500	\$1,500
County Health Services Agency Total			\$8,250	\$2,638	\$5,613
County of Santa Cruz					
17th Ave Cape Seal (Brommer to East Cliff)	CO 65	Pavement maintenance, isolated section digout and asphalt replacement and cape seal on entire roadway.	\$363	\$363	\$0
26th Ave Improvements (entire length-Portola Dr to end)	CO-P31a	Roadway and roadside improvements on various Major Collectors including sidewalks, bike lanes, transit turnouts, left turn pockets, merge lanes and intersection improvements.	\$2,500	\$0	\$2,500
26th to 30th (at Lode/Quartz) Bike/Ped Connection	CO-P78	New bike/ped connection from Lode and Quartz to Moran Trail, which connects to 30th.	\$500	\$0	\$500
35th to 41st (at Roland Way) New Ped/Bike Connection	CO-P76	New bike/ped connection between 34th and 41st Avenue at Roland Street to connect upper Pleasure Point neighborhood to goods and services near Lower 41st Avenue.	\$500	\$0	\$500
37th/38th Ave (Brommer to Eastcliff) Multimodal Circulation Improvements and Greenway	CO-P27a	Evaluate and if feasible improve vehicle and transit access on 38th Avenue from East Cliff to Brommer and develop greenway on 37th Avenue from East Cliff to Portola. Roadway improvements may include roadway and roadside improvements including sidewalks, bike treatments (such as buffered and/or painted bike lanes, bike boxes, bike signals), transit turnouts, left turn pockets, and intersection improvement.	\$2,000	\$500	\$1,500
41st Ave (Portola to Eastcliff) Bike/Ped Enhancement	CO-P79	Install buffered sidewalks on south side of 41st Avenue between Portola and Eastcliff and bicycle treatments (such as buffered and/or painted bike lanes, bike boxes, bike signals) on 41st Avenue between Portola and Eastcliff.	\$200	\$200	\$0
41st Ave Improvements Phase 2 (Hwy 1 Interchange to Soquel Dr)	CO-P26a	Roadway and roadside improvements including bike lanes, sidewalks, transit turnouts, left turn pockets, merge lanes and intersection improvements.	\$1,200	\$300	\$900
Airport Blvd Improvements (City limits to Green Valley Rd)	CO-P02	Major rehab, addition of bike lanes, transit facilities, merge lanes, intersection improvements, sidewalks, drainage, and landscaping.	\$1,200	\$1,200	\$0

Project Title	ID	Project Description/Scope	Est total cost	Constrained	Unconstrained
Alba Rd Improvements (Empire Grade to State Hwy 9)	CO-P30b	Roadwork includes major rehabilitation and maintenance of the road and roadsides.	\$1,700	\$0	\$1,700
Amesti Road Multimodal Improvements (Green Valley to Brown Valley Rd)	CO-P03	Roadway rehab and reconstruction, left turn pockets at Green Valley Road, Pioneer Road/Varni Road. Add bike lanes, transit turnouts, sidewalks, merge lanes, landscaping, and intersection improvements.	\$6,000	\$600	\$5,400
Aptos Beach Dr Improvements (Esplande to Rio Del Mar Blvd)	CO-P27b	Roadway and roadside improvements on various Major Collectors including bike lanes, transit turnouts, left turn pockets, merge lanes and intersection improvement.	\$1,200	\$0	\$1,200
Aptos Village Plan Improvements	CO 64	Modifications to ped, bike, and auto traffic. Add pedestrian facilities on both sides of Soquel Dr; maintain existing bike lanes; new bus pullout and shelter on north side. Trout Gulch: Replace sidewalks with standard sidewalks on east side, ADA upgrades to west side sidewalks. Install traffic signals at Soquel Dr/Aptos Creek Rd & Soq/Trout Gulch. RR crossing modifications - new crossing arms, concrete panels for vehicle and pedestrian crossings. New RR xing at Parade St. Phase 1: Trout Gulch Rd improvements w/traffic signal and upgraded RR xg at Soquel Dr.	\$3,377	\$3,377	\$0
Beach Road Improvements (City limits to Pajaro Dunes)	CO-P26b	Roadway and roadside improvements including bike lanes, sidewalks, transit turnouts, left turn pockets, merge lanes and intersection improvements.	\$1,200	\$300	\$900
Bean Creek Rd Improvements (Scotts Valley City Limits to Glenwood Dr)	CO-P28a	Roadway and roadside improvements on various Minor Arterials including addition of bike lanes, transit turnouts, left turn pockets, merge lanes and intersection improvements. Roadwork includes major rehabilitation and maintenance of the road.	\$1,700	\$425	\$1,275
Bear Creek Rd Surface Seal (PM 4.75-PM 7.0)	CO 71	3-layer slurry seal and restriping to rehabilitate the roadway surface.	\$834	\$500	\$334
Bear Creek Road Improvements (Hwy 9 to Hwy 35)	CO-P04	Major rehab, add bike lanes, turnouts, merge lanes, and intersection improvements. Some landscaping and drainage improvements also.	\$4,600	\$690	\$3,910
Bonita Dr Improvements (entire length)	CO-P29b	Improvements of roadways and roadsides on various Minor Collectors including addition of bike lanes, transit turnouts, left turn pockets, merge lanes and intersection improvements. Roadwork includes major rehabilitation and maintenance of the road.	\$1,200	\$0	\$1,200
Bonny Doon Rd Improvements (Hwy 1 to Pine Flats Rd)	CO-P43	Construction of a Class 1 bike lane facility, addition of transit stops, intersection improvements, major road rehabilitation, road maintenance, and drainage improvements.	\$8,000	\$0	\$8,000
Bowker Rd Improvements (entire length- Buena Vista Dr to Freedom Blvd)	CO-P33a	Roadway and roadside improvements on various Minor Collectors including addition of bike lanes, transit turnouts, left turn pockets, merge lanes and intersection improvements. Roadwork includes major rehabilitation and maintenance of the road.	\$600	\$0	\$600
Branciforte Dr Improvements (City of Santa Cruz to Vine Hill Rd)	CO-P30c	Improvements of roadways and roadsides on various Major Arterials including addition of bike lanes, transit turnouts, left turn pockets, merge lanes and intersection improvements. Roadwork includes major rehabilitation and maintenance of the road and roadsides.	\$1,700	\$0	\$1,700
Brommer and Portola Bike/Ped Connection (atThompson and Vanessa Ln)	CO-P81	New bike/ped connection between Thompson and Vanessa Lane across rail line as alternative route to 30th for low stress bicycle riders.	\$300	\$300	\$0
Brown Valley Rd Improvements (Corralitos Rd to Redwood Rd)	CO-P26d	Roadway and roadside improvements including bike lanes, sidewalks, transit turnouts, left turn pockets, merge lanes and intersection improvements.	\$1,200	\$300	\$900
Buena Vista Rd Improvements (San Andreas to Freedom Blvd)	CO-P26e	Roadway and roadside improvements including bike lanes, sidewalks, transit turnouts, left turn pockets, merge lanes and intersection improvements.	\$2,900	\$725	\$2,175
Bulb Ave Road Improvements (Garden St to Capitola City Limits)	CO-P65	Roadway and roadside improvements including curb, gutter, sidewalk, bike lanes, left turn lanes, intersection improvements and roadway rehabilitation.	\$750	\$0	\$750

Project Title	ID	Project Description/Scope	Est total cost	Constrained	Unconstrained
Cabrillo College Dr Improvements (Park Ave to Twin Lakes Church)	CO-P30d	Improvements of roadways and roadsides on various Major Arterials including addition of bike lanes, transit turnouts, left turn pockets, merge lanes and intersection improvements. Roadwork includes major rehabilitation and maintenance of the road and roadsides.	\$1,200	\$300	\$900
Capitola Rd Ext Improvements (Capitola Rd to Soquel Ave)	CO-P31b	Roadway and roadside improvements on various Major Collectors including bike lanes, transit turnouts, left turn pockets, merge lanes and intersection improvements.	\$1,200	\$0	\$1,200
Capitola Road Slurry Seal (30th-17th Ave)	CO 72	Double fiberized slurry seal and restriping to rehabilitate the roadway surface.	\$326	\$326	\$0
Carlton Rd Traffic Improvements for Trucks (Lakeview Intersection)	CO-P56	Roadway and roadside improvements including bike lanes, left turn lanes, intersection improvements and roadway rehabilitation.	\$750	\$0	\$750
Carol Way/Lompico Creek Bridge Replacement	CO-P49	Replace existing single span-two lane bridge construction of steel girders and long deck with new 30 ft wide single span flat sale concrete bridge. Include (2) 11 ft lanes and (2) 4 ft shoulders.	\$1,200	\$0	\$1,200
Cassery Rd Bridge Replacement	CO 73	Replace existing bridge in poor condition over a tributary of Green Valley Creek near Smith Rd intersection	\$903	\$903	\$0
Cassery Rd Improvements (Hwy 152 to Green Valley Rd)	CO-P26g	Roadway and roadside improvements including bike lanes, sidewalks, transit turnouts, left turn pockets, merge lanes and intersection improvements.	\$750	\$188	\$563
Cathedral Dr Improvements (entire length)	CO-P33b	Roadway and roadside improvements on Minor Collector. Roadwork includes major rehabilitation and maintenance of the road.	\$600	\$0	\$600
Center Ave/Seacliff Dr Improvements (Broadway to Aptos Beach Dr)	CO-P26h	Roadway and roadside improvements including bike lanes, sidewalks, transit turnouts, left turn pockets, merge lanes and intersection improvements.	\$1,200	\$300	\$900
Chanticleer Ave Improvements (Hwy 1 to Soquel Dr)	CO-P26i	Roadway and roadside improvements including bike lanes, sidewalks, drainage and intersection improvements.	\$1,200	\$300	\$900
Cliff Dr Improvements (Rio Del Mar to Railroad Crossing)	CO-P29c	Improvements of roadways and roadsides on various Minor Collectors including addition of bike lanes, transit turnouts, left turn pockets, merge lanes and intersection improvements. Roadwork includes major rehabilitation and maintenance of the road.	\$600	\$0	\$600
Clubhouse Drive Improvements (Sumner Av to Rio Del Mar Blvd)	CO-P32a	Road rehabilitation and maintenance. Roadside improvements: left lane pockets, sidewalks, bike lanes and transit turnouts.	\$1,400	\$0	\$1,400
College Road Improvements (Hwy 152 to Lakeview Rd)	CO-P23	Major road rehab, add left turn pocket at Cutter Drive. Also add bike lanes, transit turnouts, sidewalks, landscaping. Drainage improvements, merge lanes, and intersection improvements may also be needed.	\$1,700	\$0	\$1,700
Commercial Way Improvements (Mission Dr. to Soquel Dr.)	CO-P28c	Roadway and roadside improvements on various Minor Arterials including addition of bike lanes, transit turnouts, left turn pockets, merge lanes and intersection improvements. Roadwork includes major rehabilitation and maintenance of the road.	\$600	\$150	\$450
Corcoran Ave Improvements (Alice St to Felt St)	CO-P27c	Roadway and roadside improvements on various Major Collectors including bike lanes, transit turnouts, left turn pockets, merge lanes and intersection improvement.	\$600	\$150	\$450
Corralitos Road Rehab and Improvements (Freedom Blvd to Hames Rd)	CO-P08	Major rehab, transit, bike, and ped facilities. May also include drainage, merge lanes, landscaping and intersection improvements.	\$600	\$600	\$0
Countywide Access Ramps	CO-P37	Construction of handicapped access ramps countywide.	\$1,200	\$600	\$600
Countywide Bike Projects	CO-P71	Bike projects based on needs identified through the Santa Cruz County Bicycle Plan and plan updates. These are in addition to projects listed individually in the RTP.	\$4,000	\$0	\$4,000

Project Title	ID	Project Description/Scope	Est total cost	Constrained	Unconstrained
Countywide General Road Maintenance and Operations	CO-P35	Ongoing maintenance, repair, and operation of road/street system within the unincorporated areas of the county. (Need \$14M/yr. Const=\$7.4M/yr)	\$473,000	\$304,904	\$168,096
Countywide Sidewalks	CO-P41	Install sidewalks.	\$70,000	\$7,000	\$63,000
Day Valley Rd Improvements (entire length-Freedom Blvd to Valencia Rd)	CO-P31c	Roadway and roadside improvements on various Major Collectors including bike lanes, transit turnouts, left turn pockets, merge lanes and intersection improvements.	\$1,200	\$0	\$1,200
East Cliff (26th to Moran Way) Sidewalk Improvement	CO-P77	Install sidewalk from 26th south to link to Moran Way.	\$400	\$0	\$400
East Cliff Dr Pedestrian Pathway (5th-7th Ave)	CO-P50	Construct pedestrian pathway on East Cliff.	\$1,700	\$1,700	\$0
East Cliff Drive Cape Seal (12th-17th)	CO 66	Pavement maintenance, isolated section digout and asphalt replacement and cape seal on entire roadway.	\$222	\$222	\$0
East Cliff Drive Improvements (32nd Ave to Harbor)	CO-P09	Roadway rehab, add left turn pockets at 26th and 30th Ave, fill gaps in bikeways and sidewalks, add transit turnouts, intersection improvements. Some landscaping and drainage improvements.	\$4,600	\$2,300	\$2,300
East Zayante Rd Improvements (Lompico Rd to just before Summit Rd)	CO-P26j	Roadway and roadside improvements including bike lanes, sidewalks, transit turnouts, left turn pockets, merge lanes and intersection improvements.	\$1,700	\$425	\$1,275
Either Way Ln Bridge Replacement Project	CO-P88	The project will consist of completely replacing the existing narrow one lane structure and roadway approaches with a two lane clear span precast voided concrete slab bridge and standard bridge approaches.	\$2,114	\$2,114	\$0
El Dorado Ave Road Improvements (Capitola Rd to RR)	CO-P67	Roadway and roadside improvements including curb, gutter, buffered sidewalk, bike treatments (such as buffered and/or painted bike lanes, bike boxes, bike signals), left turn lanes, intersection improvements and roadway rehabilitation.	\$1,750	\$0	\$1,750
El Rancho Dr Improvements (Mt. Hermon/Hwy 17 to SC city limits)	CO-P26k	Roadway and roadside improvements including bike lanes, sidewalks, transit turnouts, left turn pockets, merge lanes and intersection improvements.	\$2,300	\$575	\$1,725
Empire Grade 2-layer Seal (130' north of Heller Dr to 0.79 mi north of Heller)	CO 67B	Asphalt digout, 2-layer seal, and restriping to rehabilitate the roadway surface.	\$211	\$211	\$0
Empire Grade 2-Layer Seal (SC city limits to 130' N of Heller Dr)	CO 67	Pavement maintenance, isolated section digout and asphalt replacement and 2-layer seal on entire roadway.	\$328	\$328	\$0
Empire Grade Improvements	CO-P10	Road rehab and maintenance, left turn pocket at Felton Empire Road, add bike lanes, transit facilities, some sidewalks, landscaping. Drainage improvements, merge lanes, and intersection improvements may also be needed.	\$4,600	\$1,150	\$3,450
Esplanade Improvements (entire loop: Aptos Beach Dr to Moosehead/Aptos Beach Dr)	CO-P33c	Roadway and roadside improvements on various Minor Collectors including addition of bike lanes, traffic circles, transit turnouts, left turn pockets, merge lanes and intersection improvements. Roadwork includes major rehabilitation and maintenance of the road.	\$1,200	\$0	\$1,200
Eureka Canyon Rd Improvements (Hames Rd to Buzzard Lagoon Rd)	CO-P26l	Roadway and roadside improvements including bike lanes, sidewalks, transit turnouts, left turn pockets, merge lanes and intersection improvements.	\$2,300	\$575	\$1,725
Felton Empire Road Improvements (entire length to State Hwy 9)	CO-P28d	Roadway and roadside improvements on various Minor Arterials including addition of bike lanes, transit turnouts, left turn pockets, merge lanes and intersection improvements. Roadwork includes major rehabilitation and maintenance of the road.	\$2,300	\$575	\$1,725

Project Title	ID	Project Description/Scope	Est total cost	Constrained	Unconstrained
Fern Dr @ San Lorenzo River Bridge Replacement Project	CO-P90	The project will consist of completely replacing the existing three span single lane structure and roadway approaches with a new two lane clear span reinforced concrete box girder bridge and standard bridge approaches.	\$2,739	\$2,739	\$0
Forest Hill Dr @ Bear Creek Bridge Replacement Project	CO-P86	The Project will consist of completely replacing existing steel girder bridge crossing Bear Creek with a new precast concrete voided slab bridge.	\$1,981	\$1,981	\$0
Freedom Blvd Cape Seal (Hwy 1 to Pleasant Vly Rd)	CO 74	Asphalt Digout, Cape Seal, and restriping to rehabilitate the roadway surface.	\$1,384	\$1,384	\$0
Freedom Blvd Multimodal Improvements (Bonita Dr to City of Watsonville)	CO-P11	Add bike lanes, sidewalks on some segments, transit turnouts, signalization. Left turn pockets at Bowker, Day Valley, White Rd, and Corralitos Rd. Also includes merge lanes, intersection improvements, landscaping, major rehabilitation and maintenance, drainage improvements.	\$3,000	\$750	\$2,250
Glen Arbor Rd Improvements (State Hwy 9 to State Hwy 9)	CO-P30f	Improvements of roadways and roadsides on various Major Arterials including addition of bike lanes, transit turnouts, left turn pockets, merge lanes and intersection improvements. Roadwork includes major rehabilitation and maintenance of the road and roadsides.	\$1,200	\$0	\$1,200
Glen Canyon Rd Improvements (Branciforte Dr to City of Scotts Valley)	CO-P26m	Roadway and roadside improvements including bike lanes, sidewalks, transit turnouts, left turn pockets, merge lanes and intersection improvements.	\$5,800	\$1,450	\$4,350
Glen Coolidge Drive/Hwy 9 Bike Path	CO-P40	Class 1 bike facility from Glen Coolidge Dr to Hwy 9 to provide eastern access to UCSC.	\$2,300	\$0	\$2,300
Glenwood Cutoff General Improvements (Glenwood Dr to Hwy 17)	CO-P61	Roadway and roadside improvements including bike lanes, left turn lanes, intersection improvements and roadway rehabilitation.	\$3,000	\$0	\$3,000
Glenwood Dr. Improvements (Scotts Valley city limits to State Hwy 17)	CO-P26n	Roadway and roadside improvements including bike lanes, sidewalks, transit turnouts, left turn pockets, merge lanes and intersection improvements.	\$2,900	\$725	\$2,175
Graham Hill Road Multimodal Improvements (City of SC to Hwy 9)	CO-P12	Bike lanes, sidewalks, transit turnouts, left turn pockets, merge lanes, traffic signals. Major rehabilitation and maintenance. Drainage improvements. Signal upgrade at SR9.	\$6,800	\$1,700	\$5,100
Granite Creek Rd Improvements (Branciforte Dr to City of Scotts Valley)	CO-P30h	Improvements of roadways and roadsides on various Major Arterials including addition of bike lanes, transit turnouts, left turn pockets, merge lanes and intersection improvements. Roadwork includes major rehabilitation and maintenance of the road and roadsides.	\$1,700	\$0	\$1,700
Green Valley Rd 3-Layer Seal: Devon Ln to Melody Ln (0.58 mi)	CO 68	Pavement maintenance, isolated section digout and asphalt replacement and 3-layer seal on entire roadway.	\$260	\$260	\$0
Green Valley Rd Bridge Replacement Project	CO-P85	The project will consist of completely replacing the existing two lane structure and roadway approaches with a two lane clear span concrete slab bridge and standard bridge approaches.	\$2,047	\$2,047	\$0
Green Valley Rd Pedestrian Safety Project	CO 42b	Build 6-foot wide sidewalk with some curb and gutter on NW side of Green Valley Rd from Airport Blvd to Amesti Rd (1800 ft).	\$375	\$375	\$0
Green Valley Road Improvements	CO-P13	Add two-way left turn lanes from Mesa Verde to Pinto Lake on Green Valley Rd. Also includes some road rehab and maintenance, bike lanes, sidewalks, transit facilities, landscaping, and merge lanes.	\$4,000	\$1,000	\$3,000
Hames Rd Improvements (entire length-Freedom Blvd to Eureka Canyon Rd)	CO-P32b	Road rehab and maint. Roadside improvements--left lane pockets, sidewalks, bike lanes and transit turnouts.	\$3,500	\$0	\$3,500
Harkins Slough Rd. Improvements (entire length-Buena Vista Dr to State Hwy 1)	CO-P32c	Road rehab and maint. Roadside improvements--left lane pockets, sidewalks, bike lanes and transit turnouts.	\$1,700	\$0	\$1,700

Project Title	ID	Project Description/Scope	Est total cost	Constrained	Unconstrained
Harper St Improvements (entire length-El Dorado Ave to ECM)	CO-P33d	Roadway and roadside improvements on various Minor Collectors including addition of bike lanes, transit turnouts, left turn pockets, merge lanes and intersection improvements. Roadwork includes major rehabilitation and maintenance of the road.	\$1,200	\$300	\$900
Holohan Rd and Highway 152 Intersection Safety Improvement Project	CO-P92	Pedestrian and bicycle safety improvements. Intersection capacity enhancements and signal modifications.	\$1,600	\$1,600	\$0
Huntington Dr Improvements (Monroe Ave to Valencia Rd.)	CO-P32d	Road rehab and maint. Roadside improvements--left lane pockets, sidewalks, bike lanes and transit turnouts.	\$2,300	\$0	\$2,300
Jamison Cr Rd Improvements (entire length-Empire Grade to Hwy 236)	CO-P32e	Road rehab and maint. Roadside improvements--left lane pockets, sidewalks, bike lanes and transit turnouts.	\$600	\$0	\$600
La Madrona Dr Improvements (El Rancho Dr to City of Scotts Valley)	CO-P14	Bike lanes, sidewalks, transit turnouts, left turn pockets at Sims Road, Highway 17, and El Rancho Road), merge lanes, and intersection improvements. Also includes major rehabilitation, drainage and maintenance.	\$3,500	\$875	\$2,625
Lakeview Road Improvements	CO-P15	Major road rehab, add left turn pocket at College Road, intersection improvements at Carlton Rd. Also add bike lanes, new transit facilities, landscaping. Drainage improvements, merge lanes, and intersection improvements may also be needed.	\$1,200	\$0	\$1,200
Larkin Valley Rd Improvements (San Andreas Rd to Buena Vista Dr)	CO-P30i	Improvements of roadways and roadsides on various Major Arterials including addition of bike lanes, transit turnouts, left turn pockets, merge lanes and intersection improvements. Roadwork includes major rehabilitation and maintenance of the road and roadsides.	\$600	\$0	\$600
Larkspur Bridge @San Lorenzo River	CO-P91	The project will consist of completely replacing the existing narrow one lane structure and roadway approaches with a two lane bridge and standard bridge approaches.	\$3,809	\$3,809	\$0
Laurel Glen Rd Improvements (Soquel-San Jose Rd to Mt. View/Rodeo Gulch Rd)	CO-P30j	Improvements of roadways and roadsides on various Major Arterials including addition of bike lanes, transit turnouts, left turn pockets, merge lanes and intersection improvements. Roadwork includes major rehabilitation and maintenance of the road and roadsides.	\$1,200	\$0	\$1,200
Ledyard Way Improvements (entire length-Soquel Dr to Soquel Dr)	CO-P31d	Roadway and roadside improvements on various Major Collectors including bike lanes, transit turnouts, left turn pockets, merge lanes and intersection improvements.	\$600	\$0	\$600
Lockhart Gulch Improvements (Scotts Valley City limits to end)	CO-P31e	Roadway and roadside improvements on various Major Collectors including bike lanes, transit turnouts, left turn pockets, merge lanes and intersection improvements.	\$1,200	\$0	\$1,200
Lockwood Lane Improvements (Graham Hill Rd to SV limits)	CO-P24	Major road rehab, add bicycle lanes, sidewalks, some transit facilities, landscaping, and intersection improvements.	\$850	\$213	\$638
Lomond St, Laurel St & Harmon St Pedestrian Safety Improvements (Boulder Creek Elementary School)	CO-P60	Roadway and roadside improvements including curb, gutter, sidewalk, bike lanes, left turn lanes, intersection improvements and roadway rehabilitation near Boulder Creek Elementary School.	\$582	\$582	\$0
Lompico Rd Improvements (E Zayante Rd. to end)	CO-P30k	Improvements of roadways and roadsides on various Major Arterials including addition of bike lanes, transit turnouts, left turn pockets, merge lanes and intersection improvements. Roadwork includes major rehabilitation and maintenance of the road and roadsides.	\$600	\$0	\$600
Maciel Ave Improvements (Capitola Rd to Mattison Ln)	CO-P29e	Improvements of roadways and roadsides on various Minor Collectors including addition of bike lanes, transit turnouts, left turn pockets, merge lanes and intersection improvements. Roadwork includes major rehabilitation and maintenance of the road.	\$1,400	\$350	\$1,050
Main St Improvements (Porter St to Cherryvale Ave)	CO-P27e	Roadway and roadside improvements on Major Collector including bike lanes, transit turnouts, left turn pockets, merge lanes and intersection improvement.	\$1,700	\$1,700	\$0

Project Title	ID	Project Description/Scope	Est total cost	Constrained	Unconstrained
Manfre Rd Improvements (entire length-Larkin Valley Rd to Buena Vista Dr)	CO-P33e	Roadway and roadside improvements on various Minor Collectors including addition of bike lanes, transit turnouts, left turn pockets, merge lanes and intersection improvements. Roadwork includes major rehabilitation and maintenance of the road.	\$600	\$0	\$600
Mar Monte Ave Improvements (San Andreas Rd to State Hwy 1)	CO-P30l	Improvements of roadways and roadsides on various Major Arterials including addition of bike lanes, transit turnouts, left turn pockets, merge lanes and intersection improvements. Roadwork includes major rehabilitation and maintenance of the road and roadsides.	\$600	\$0	\$600
Mar Vista Dr Improvements (entire length-just before Seaciff Dr to Soquel Dr)	CO-P33f	Roadway and roadside improvements on various Minor Collectors including addition of bike lanes, buffered sidewalks, transit turnouts, left turn pockets, merge lanes and intersection improvements. Roadwork includes major rehabilitation and maintenance of the road.	\$290	\$0	\$290
Mar Vista to State Park Dr New Ped/Bike Connection	CO-P72	New bike/ped connection from Mar Vista to State Park (via Sailfish or Caterberry) to connect neighborhood to State Park goods, services and transit.	\$500	\$0	\$500
Mattison Ln Improvements (Chanticleer Ave to Soquel Ave)	CO-P26p	Roadway and roadside improvements including bike lanes, sidewalks, transit turnouts, left turn pockets, merge lanes and intersection improvements.	\$1,400	\$350	\$1,050
McGregor Dr Improvements (Capitola city limits to Searidge Rd)	CO-P33g	Roadway and roadside improvements on various Minor Collectors including addition of bike lanes, transit turnouts, left turn pockets, merge lanes and intersection improvements. Roadwork includes major rehabilitation and maintenance of the road.	\$1,200	\$0	\$1,200
Mesa Dr Improvements (Vienna Drive to Ledyard Way)	CO-P31f	Roadway and roadside improvements on various Major Collectors including bike lanes, transit turnouts, left turn pockets, merge lanes and intersection improvements.	\$1,200	\$0	\$1,200
Mill St Improvements (entire length)	CO-P27f	Roadway and roadside improvements on various Major Collectors including bike lanes, transit turnouts, left turn pockets, merge lanes and intersection improvement.	\$350	\$350	\$0
Mountain View Rd Improvements (Branciforte Dr to Rodeo Gulch Rd)	CO-P27g	Roadway and roadside improvements on various Major Collectors including bike lanes, transit turnouts, left turn pockets, merge lanes and intersection improvement.	\$1,200	\$0	\$1,200
Mt. Hermon Rd Pavement Preservation: Graham Hill to 1000' N of Locatelli Ln	CO 69	Pavement maintenance, isolated section digout and asphalt replacement and 3-layer seal.	\$857	\$857	\$0
Mt. Hermon Rd. Improvements (Lockhart Gulch to Graham Hill Rd)	CO-P26q	Roadway and roadside improvements including bike lanes, sidewalks, transit turnouts, left turn pockets, merge lanes and intersection improvements.	\$2,900	\$725	\$2,175
Murphy Crossing Improvements	CO-P39	Bikeway on Murphy Crossing (Hwy 129 to Monterey Co line), major rehabilitation and maintenance of road, drainage improvements may also be needed.	\$1,200	\$0	\$1,200
Nelson Rd PM 2.0 Storm Damage Repair	CO 62	Build permanent bypass around 350 ft. debris that closed road in 2010.	\$1,500	\$1,500	\$0
Old County Rd Bridge Replacement Project	CO-P84	The project will consist of completely replacing the existing one lane structure and roadway approaches with a one lane clear span concrete box girder bridge and standard bridge approaches.	\$2,489	\$2,489	\$0
Opal Cliff Dr Improvements (41st Av to Capitola City Limits)	CO-P31g	Roadway, roadside and intersection improvements including sidewalks, bike treatments (such as buffered and/or painted bike lanes), designed to accommodate the number of users and link to East Cliff Drive.	\$1,200	\$300	\$900
Pajaro River Bike Path System	CO-P38	Construction of a Class 1 bike path along the levees and a Class 2 bikeway on Thurwatcher Road and Beach Road.	\$9,200	\$9,200	\$0
Pajaro Valley High School Access Improvements	CO-P93	Provide improved and/or additional access to Pajaro Valley High School.	\$1,500	\$0	\$1,500

Project Title	ID	Project Description/Scope	Est total cost	Constrained	Unconstrained
Paul Minnie Ave. Improvements (Rodriguez St to Soquel Ave)	CO-P29f	Improvements of roadways and roadsides on various Minor Collectors including addition of bike lanes, transit turnouts, left turn pockets, merge lanes and intersection improvements. Roadwork includes major rehabilitation and maintenance of the road.	\$1,200	\$300	\$900
Paul Sweet Road Improvements (Soquel Dr to end)	CO-P22	Major road rehab and maintenance. Also adds bike lanes, sidewalks, landscaping. Drainage improvements, merge lanes, and intersection improvements, and new transit facilities may also be needed.	\$1,200	\$300	\$900
Paulsen Rd Improvements (Green Valley Rd to Whiting Rd)	CO-P27h	Roadway and roadside improvements on various Major Collectors including bike lanes, transit turnouts, left turn pockets, merge lanes and intersection improvement.	\$1,200	\$300	\$900
Pine Flat Rd Improvements (Bonny Doon Rd to Empire Grade Rd)	CO-P28f	Roadway and roadside improvements on various Minor Arterials including addition of bike lanes, transit turnouts, left turn pockets, merge lanes and intersection improvements. Roadwork includes major rehabilitation and maintenance of the road.	\$2,300	\$575	\$1,725
Pinehurst Dr Improvements (entire length)	CO-P27i	Roadway and roadside improvements on various Major Collectors including bike lanes, transit turnouts, left turn pockets, merge lanes and intersection improvement.	\$850	\$213	\$638
Pioneer Rd Improvements (Amesti Rd to Green Valley Rd)	CO-P31h	Roadway and roadside improvements on various Major Collectors including bike lanes, transit turnouts, left turn pockets, merge lanes and intersection improvements.	\$850	\$0	\$850
Polo Dr Improvements (Soquel Dr to end)	CO-P29g	Improvements of roadways and roadsides on various Minor Collectors including addition of bike lanes, transit turnouts, left turn pockets, merge lanes and intersection improvements. Roadwork includes major rehabilitation and maintenance of the road.	\$1,400	\$0	\$1,400
Porter St Improvements (Soquel Dr to Paper Mill Rd)	CO-P26r	Roadway and roadside improvements including buffered sidewalks and bicycle treatments (such as buffered and/or painted bike lanes, bike boxes, bike signals) to address speed inconsistency between bicyclists and vehicles, transit turnouts, left turn pockets, merge lanes and intersection improvements.	\$1,200	\$300	\$900
Porter Street Overlay: Capitola Limits to 288' N/O Soquel Dr	CO 70	Pavement maintenance, edge grinding, isolated section digout and asphalt replacement and 2" overlay on entire roadway.	\$341	\$341	\$0
Portola Ave (26th to 41st) Bike/Ped Enhancement	CO-P80	Install pedestrian buffer and provide pedestrian amenities such as benches. Install bike treatments (such as buffered and/or painted bike lanes, bike boxes, bike signals). Increase number of pedestrian crossings to closer to 300 ft and include pedestrian.	\$300	\$300	\$0
Portola Dr Cape Seal (E. Cliff to 24th Ave)	CO 76	Double fiberized slurry seal and restriping to rehabilitate the roadway surface.	\$230	\$230	\$0
Quail Hollow Rd Bridge Replacement Project	CO-P82	The project will consist of completely replacing the existing two lane structure and roadway approaches with a two lane clear span concrete bridge and standard bridge approaches.	\$2,352	\$2,352	\$0
Quail Hollow Rd Improvements (entire length- East Zayante to Glen Arbor Rd)	CO-P32f	Road rehab and maint. Roadside improvements--left lane pockets, sidewalks, bike lanes and transit turnouts.	\$800	\$0	\$800
Rancho Del Mar Shopping Center (Rail Line to State Park) bike/ped path	CO-P75	Separated bicycle/pedestrian facility through Rancho Del Mar Shopping Center to connect MBSST to goods and services in shopping center and State Park Drive.	\$300	\$300	\$0
Rancho Rio Ave @ Newell Creek Bridge Replacement Project	CO-P87	The project will consist of completely replacing the existing one lane structure and roadway approaches with a two lane clear span concrete slab bridge and standard bridge approaches.	\$1,676	\$1,676	\$0
Redwood Lodge Rd (Entire Length)	CO-P51	Roadway and roadside improvements including curb, gutter, sidewalk, bike lanes, left turn lanes, intersection improvements and roadway rehabilitation.	\$3,000	\$0	\$3,000
Redwood Lodge Rd PM 1.65 Storm Damage Repair	CO 63	Repair 80 ft. slipout/slump to reopen roadway to traffic.	\$1,000	\$1,000	\$0

Project Title	ID	Project Description/Scope	Est total cost	Constrained	Unconstrained
Redwood Rd Bridge Replacement Project	CO-P89	The project will consist of completely replacing the existing steel army treadway bridge crossing a tributary of Brown's Creek on Redwood Road with a reinforced concrete slab bridge and standard bridge approaches.	\$1,271	\$1,271	\$0
Rio Del Mar Blvd Improvements (Esplanade to Soquel Dr)	CO-P30n	Improvements of roadways and roadsides on various Major Arterials including addition of bike lanes, sidewalks, transit turnouts, left turn pockets, merge lanes and intersection improvements. Roadwork includes major rehabilitation and maintenance of the road and roadsides.	\$2,900	\$725	\$2,175
Robertson Street Improvements (Soquel Wharf Rd to Soquel Dr.)	CO-P16	Left turn pocket at Soquel Wharf Rd. Add bike lanes, transit turnout, sidewalks, and rehabilitation and maintenance, drainage improvements and traffic signal. Roadside: sidewalks, landscaping, and new transit facilities.	\$3,500	\$0	\$3,500
Rodeo Gulch Rd Improvements (So & North: Mt. View/Laurel Glen Rd to Hwy 1)	CO-P31i	Roadway and roadside improvements on various Major Collectors including bike lanes, transit turnouts, left turn pockets, merge lanes and intersection improvements.	\$1,700	\$0	\$1,700
Roland Dr Improvements (30th to 35th)	CO-P31j	Roadway and roadside improvements and implementation of greenway, which gives priority to bicycles and pedestrians on low volume, low speed streets including, pedestrian facilities, way finding and pavement markings, bicycle treatments to connect to new bike/ped connection to 41st.	\$850	\$0	\$850
San Lorenzo River Valley Trail	CO-P46	15 mile, paved multi-use path for bicyclists and pedestrians from Boulder Creek to Santa Cruz.	\$25,000	\$0	\$25,000
San Lorenzo Valley Trail: Hwy 9 - Downtown Felton Bike Lanes & Sidewalks	CO-P46a	Install sidewalks and bicycle lanes on Hwy 9 through downtown Felton.	\$2,200	\$2,200	\$0
San Lorenzo Valley Trail: Hwy 9 - North Felton Bike Lanes & Sidewalks	CO-P46b	Install sidewalk/pedestrian path on west side, shoulder widening to 5' for bicycle lanes from Felton-Empire/Graham Hill Rd to Glen Arbor Road, Ben Lomond, including frontage of SLV elementary, middle and high schools. Includes new and replacement bike/ped bridges.	\$7,400	\$7,400	\$0
San Lorenzo Way Bridge Replacement Project	CO-P83	The project will consist of completely replacing the existing one lane structure and roadway approaches with a two lane clear span bridge and standard bridge approaches.	\$3,088	\$3,088	\$0
Seacliff Dr Improvements (entire length)	CO-P27j	Roadway and roadside improvements on various Major Collectors including bike lanes, sidewalks, transit turnouts, left turn pockets, merge lanes and intersection improvement.	\$1,700	\$0	\$1,700
Seacliff Dr/North Avenue Bike/Ped Connection to MBSST	CO-P73	New bike/ped connection from North Street to Aptos Village Square and Soquel Drive across MBSST to connect neighborhood to State Park goods, services and transit.	\$300	\$0	\$300
Searidge Drive (Mar Vista to State Park) Bike Improvements	CO-P74	Install bike treatments (such as buffered and/or painted bike lanes, bike boxes, bike signals).	\$100	\$100	\$0
Seascape Blvd Improvements (Sumner Ave to San Andreas Rd)	CO-P26s	Roadway improvements and pavement rehabilitation.	\$600	\$150	\$450
Sims Road Improvements (Graham Hill Rd to La Madrona Dr)	CO-P17	Road rehab and maintenance, drainage, intersection improvements, landscaping, add bike, ped, and transit facilities.	\$1,700	\$425	\$1,275
Smith Grade Improvements (entire length-Empire Grade to Bonny Doon Rd)	CO-P32g	Road rehab and maint. Roadside improvements--left lane pockets, sidewalks, bike lanes and transit turnouts.	\$2,300	\$0	\$2,300
Soquel Ave Improvements (City of SC to Gross Rd)	CO-P18	Transit turnouts, two way left turn lanes from Chanticleer to Mattison, merge lanes, signalization and intersection improvements. Signals at Chanticleer and Gross Rd. Roadwork: major rehabilitation and maintenance, perhaps drainage improvements. Roadside: sidewalks, landscaping, and new transit facilities.	\$3,200	\$3,200	\$0

Project Title	ID	Project Description/Scope	Est total cost	Constrained	Unconstrained
Soquel Dr Improvements (Soquel Ave to Freedom Blvd)	CO-P19	Signals at Willowbrook, Aptos Creek Rd and Trout Gulch Rd. Major rehab, merge lanes, intersections improvements, signal coordination, transit turnouts, fill sidewalk and bike facility gaps, some landscaping.	\$7,300	\$1,825	\$5,475
Soquel Dr Road Improvements (Robertson St to Daubenbiss)	CO-P62	Roadway and roadside improvements including curb, gutter, sidewalk, bike treatments (such as buffered and/or painted bike lanes, bike boxes, bike signals), left turn lanes, intersection improvements and roadway rehabilitation.	\$400	\$400	\$0
Soquel Dr Traffic Signal and Left Turn Lane (Robertson St)	CO-P58	Install left turn lane at signalized intersection from Soquel Dr to Robertson St and associated roadside improvements	\$500	\$0	\$500
Soquel-San Jose Rd Improvements (Paper Mill Rd to Summit Rd)	CO-P36	Roadway and roadside improvements including bike lanes, sidewalks, transit turnouts, left turn pockets, merge lanes and intersection improvements.	\$2,500	\$625	\$1,875
Soquel-Wharf Rd Improvements (Robertson St to Porter St)	CO-P28g	Roadway and roadside improvements on various Minor Arterials including addition of bike treatments (such as buffered and/or painted bike lanes, bike boxes, bike signals), transit turnouts, left turn pockets, merge lanes and intersection improvements. Roadwork includes major rehabilitation and maintenance of the road.	\$1,000	\$500	\$500
Spreckels Dr Improvements (Soquel Dr to Aptos Beach Dr)	CO-P27k	Roadway and roadside improvements on various Major Collectors including bike lanes, transit turnouts, left turn pockets, merge lanes and intersection improvement.	\$1,200	\$300	\$900
Spreckels Dr/Treasure Island Dr Improvements	CO-P42	Addition of bike lanes, intersection improvements, major road rehabilitation, road maintenance, and possible drainage improvements.	\$600	\$0	\$600
State Park Drive Improvements Phase 2	CO-P20	Transit turnouts, two way left turn, merge lanes, intersection improvements, and fill gaps in bike and ped facilities including pedestrian crossing improvements, bike treatments (such as buffered and/or painted bike lanes, bike boxes, bike signals). Plus, major rehabilitation and maintenance, drainage improvements, landscaping.	\$1,300	\$325	\$975
Summit Rd Chip Seal (Soquel-San Jose Rd-Old SC Hwy)	CO 78	Asphalt Digout, Chip Seal, and restriping to rehabilitate the roadway surface.	\$516	\$516	\$0
Summit Rd Improvements	CO-P26u	Roadway and roadside improvements including bike lanes, sidewalks, transit turnouts, left turn pockets, merge lanes and intersection improvements.	\$5,400	\$1,350	\$4,050
Sumner Ave Improvements (entire length-Rio Del Mar Blvd to end [just past via Novella])	CO-P32h	Road rehab and maint. Roadside improvements--left lane pockets, sidewalks, bike lanes and transit turnouts.	\$1,400	\$0	\$1,400
Thompson Ave Improvements (entire length-Capitola Rd to end)	CO-P33h	Roadway and roadside improvements including major rehabilitation and maintenance of road and includes implementation of greenway, which gives priority to bicycles and pedestrians on low volume, low speed streets including, pedestrian facilities, way finding and pavement markings, bicycle treatments to connect to MBSST.	\$1,200	\$0	\$1,200
Thurber Ln Improvements (entire length)	CO-P28h	Roadway and roadside improvements on various Minor Arterials including addition of bike lanes, transit turnouts, left turn pockets, merge lanes and intersection improvements. Roadwork includes major rehabilitation and maintenance of the road.	\$1,700	\$425	\$1,275
Thurwachter Road Bike Lanes	CO-P68	Install bicycle lanes.	\$50	\$0	\$50
Trout Gulch Rd Improvements (Soquel Dr. to end)	CO-P30p	Improvements of roadways and roadsides on various Major Arterials including addition of bike lanes, transit turnouts, left turn pockets, merge lanes and intersection improvements. Roadwork includes major rehabilitation and maintenance of the road and roadsides.	\$2,900	\$0	\$2,900

Project Title	ID	Project Description/Scope	Est total cost	Constrained	Unconstrained
Twin Lakes Beachfront (5th Ave to 7th Ave)	TRL 9bCO	Segment 9B of MBSST. Includes partial reconstruction of two 12' car lanes, two 5' bike lanes, universal pedestrian walkways, circular stop sign controlled three-way intersection at lower harbor entrance, 3"AC over 9"AB slurry seal, parking. Part of larger Twin Lakes Beachfront project.	\$3,600	\$3,600	\$0
Valencia Rd Improvements (Trout Gulch Rd to Valencia School Rd)	CO-P32j	Road rehab and maint. Roadside improvements--left lane pockets, sidewalks, bike lanes and transit turnouts.	\$1,700	\$0	\$1,700
Varni Rd Improvements (Corralitos Rd to Amesti Rd)	CO-P28i	Roadway and roadside improvements on various Minor Arterials including addition of bike lanes, transit turnouts, left turn pockets, merge lanes and intersection improvements. Roadwork includes major rehabilitation and maintenance of the road.	\$1,200	\$300	\$900
Vine Hill Rd Improvements (Branciforte/Mt. View Rd to State Hwy 17)	CO-P30q	Improvements of roadways and roadsides on various Major Arterials including addition of bike lanes, transit turnouts, left turn pockets, merge lanes and intersection improvements. Roadwork includes major rehabilitation and maintenance of the road and roadsides.	\$1,400	\$0	\$1,400
Wallace Ave Improvements (entire length-Huntington Dr to end)	CO-P33i	Roadway and roadside improvements on various Minor Collectors including addition of bike lanes, transit turnouts, left turn pockets, merge lanes and intersection improvements. Roadwork includes major rehabilitation and maintenance of the road.	\$850	\$0	\$850
Webster St Improvements (Jose Ave to 16th St)	CO-P29h	Improvements of roadways and roadsides on various Minor Collectors including addition of bike lanes, transit turnouts, left turn pockets, merge lanes and intersection improvements. Roadwork includes major rehabilitation and maintenance of the road.	\$1,200	\$0	\$1,200
Winkle Ave Improvements (entire length from Soquel Dr)	CO-P27l	Roadway and roadside improvements on various Major Collectors including bike lanes, transit turnouts, left turn pockets, merge lanes and intersection improvement.	\$2,300	\$575	\$1,725
County of Santa Cruz Total			\$849,715	\$412,773	\$436,943
<i>Ecology Action</i>					
Bike To Work/School Program	RTC 26	Countywide education, promotion, and incentive program to actively encourage bicycle commuting and biking to school. Coordinates efforts with local businesses, schools, and community organizations to promote bicycling on a regular basis. Provides referrals to community resources. Avg annual cost: \$140K/yr-includes in-kind donations and staff time.	\$3,500	\$1,100	\$2,400
Ecology Action Transportation Employer Membership Program	RTC 17	Community organization that promotes alternative commute choices. Work with employers, incentives for travelers to get out of SOVs including: emergency ride home, interest-free bike loans, discounted bus passes. Avg cost: \$90K/yr. Coordinates with Bike to Work program.	\$2,250	\$1,100	\$1,150
Monterey Bay Electric Vehicle Alliance (MBEVA)	VAR-P22	Help facilitate this broad collaboration of PEV advocates, businesses, union labor, manufacturers and public agencies to assist the adoption of PEV's in the Monterey Bay region. MBEVA's main goals are to: • Create PEV infrastructure in this region • Educate the public on the benefits of PEV's • Educate gov't agencies on ways to streamline PEV policy, permitting, and implementation and • Help train workforce for PEV related jobs.	\$400	\$0	\$400
South County Youth Bike Safety Training	EA 01	School-based youth bicycle safety training at 8 PVUSD elementary and middle schools. Includes in classroom and on-the-bike training.	\$35	\$35	\$0
Ecology Action Total			\$6,185	\$2,235	\$3,950

Project Title	ID	Project Description/Scope	Est total cost	Constrained	Unconstrained
SCCRTC					
511 Travel Information System	RTC-P34	Centralized multi-modal traveler information system available via phone, computer, and mobile device. Provides timely transportation information about real-time roadway conditions, incidents, transit, carpools, biking, and emergency notices. Initial start-up cost est: \$200K; annual operations \$100k/year.	\$2,200	\$2,200	\$0
Bicycle Route Signage Countywide	RTC 32	Define routes, develop and install signs directing bicyclists to preferred routes to various destinations countywide.	\$500	\$500	\$0
Bike Parking Subsidy Program	RTC 16	Subsidies for bicycle racks and lockers for businesses, schools, government agencies, and non-profit organizations are all eligible. Recipients are responsible for installation and maintenance of the equipment. Avg annual cost: \$25K/yr.	\$700	\$700	\$0
Commute Solutions Rideshare Program	RTC 02	Transportation demand management outreach, education and incentives. Includes matching service for carpools, vanpools, and bicyclists. Provides services and information about availability and benefits of alternative transportation modes, including sharing rides, transit, walking, bicycling, telecommuting, alternative work schedules, alternative fuel vehicles, and park-n-ride lots. Avg annual cost: \$250k.	\$6,250	\$5,485	\$765
County-wide Bicycle, Pedestrian and Vehicle Occupancy Counts	RTC-P50	Conduct counts to assess mode split over time and assess impact of new facilities.	\$400	\$200	\$200
Freeway Service Patrol (FSP) on Hwy 1 and Hwy 17	RTC 01	Maintain and expand tow truck patrols on Highways 1 and 17. Work with the CHP to quickly clear collisions, remove debris from travel lanes, and provide assistance to motorists during commute hours to keep incident related congestion to a minimum and keep traffic moving. Avg need: \$200k/yr constrained; \$400k/yr total cost.	\$9,200	\$5,910	\$3,290
Monterey Bay Sanctuary Scenic Trail Network - Trail Management Program	RTC 27c	Coordinate trail implementation as it traverses multiple jurisdictions to ensure uniformity; serve as Project Manager for construction of some segments; handle environmental clearance; coordinate use in respect to other requirements (closures for ag spraying, etc); solicit ongoing funding and distribute funds to implementing entities through MOUs; coordinate with community initiatives; etc.	\$1,000	\$500	\$500
Monterey Bay Sanctuary Scenic Trail Network - Design, Environmental Clearance, and Construction	RTC 27a	Design, environmental clearance and construction of a 50+ mile network of bicycle and pedestrian facilities on or near the coast, with the rail trail as the spine and additional spur trails to connect to key destinations. (Funded segments listed individually.)	\$120,224	\$40,000	\$80,224
Monterey Bay Sanctuary Scenic Trail Network - Maintenance	RTC 27b	Maintenance of the Monterey Bay Sanctuary Scenic Trail Network - ongoing clean-up, trash/recycling removal, graffiti abatement, brush clearance, surface repairs (from drainage issues, tree root intrusion) etc.	\$4,000	\$2,000	\$2,000
Performance Monitoring	RTC-P51	Transportation data collection to monitor goals/targets and performance measure implementation. Includes travel surveys of commuters, Transportation Demand Management plan, a low-stress bicycle network plan and parking standards plan.	\$1,600	\$800	\$800
Planning, Programming & Monitoring (PPM) - SB45	RTC 04	Development and amendments to state and federally mandated planning and programming documents, monitoring of programmed projects. Avg annual cost: \$250k/yr.	\$4,600	\$4,600	\$0
Rail Line Management	RTC-P03	Operating expenses for rail line oversight. Avg annual cost:\$175K/yr.	\$3,500	\$3,500	\$0
Rail Line Planning	RTC-P55	Long and short range planning for the rail line. Includes public outreach and stakeholder involvement.	\$500	\$500	\$0

Project Title	ID	Project Description/Scope	Est total cost	Constrained	Unconstrained
Rail Line: Freight Service Upgrades	RTC-P41	Upgrade rail line to FRA Class 2 to a condition for reasonable ongoing maintenance into the future. Upgrade crossings, replace jointed rail with continuously welded rail, upgrade signals, and replace ties.	\$20,000	\$20,000	\$0
Rail Transit: Watsonville-Santa Cruz Corridor	RTC-P02	Design, construction, and operation of fixed guideway public transit between Santa Cruz and Watsonville. May be a joint project with the SCCRTC, SCMTD, and local jurisdictions. Annual op cost est: \$3M/yr; capital: \$2.5M/yr.	\$82,500	\$82,500	\$0
Real-Time Transit Info	RTC-P58	Develop and maintain distribution channel for disseminating real time transit arrival and departure information to Santa Cruz Metro users. To be developed in coordination with Santa Cruz Metro.	\$500	\$500	\$0
Recreational Rail Infrastructure	RTC 25	Seasonal passenger rail service on Santa Cruz Branch rail line. Infrastructure needed for the service is listed here (e.g. platforms, sidings, pedestrian & disabled access, rail vehicles). Unsubsidized operations will be provided by a private operator and operating costs are therefore not included here. All costs are estimated.	\$5,000	\$0	\$5,000
RTC Bikeway Map	RTC-P49	Update, print and distribute free SC County Bikeway Map and update GIS files as needed.	\$300	\$300	\$0
SAFE: Call Box System Along Hwys	RTC-P01	Motorist aid system of telephone call boxes along all highways plus maintenance and upgrades. Call boxes may be used to request assistance or report incidents. Avg annual cost: \$245/yr.	\$5,390	\$5,390	\$0
SCCRTC Administration (TDA)	RTC-P07	SCCRTC as Regional Transportation Planning Agency for Santa Cruz County distributes Transportation Development Act Local Transportation Funds and State Assistance Funds for planning, transit, bicycle facilities and programs, pedestrian facilities and programs and specialized transportation in accordance with state law and the unmet transit needs process. Average annual cost: \$700K/yr.	\$14,000	\$14,000	\$0
SCCRTC Planning	RTC-P08	SCCRTC Planning Tasks. Includes long and short range planning, interagency coordination. Avg annual cost: \$975/yr.	\$19,500	\$19,500	\$0
School-Based Mobility/TDM Programs	RTC-P54	Student transportation programs aimed at improving health and well being, transportation safety and sustainability and that facilitate mode shift from driving alone in a motor vehicle to active and group transportation.	\$2,500	\$2,500	\$0
Shared Parking Program	RTC-P57	Develop tools to allow adjacent property owners to develop and share parking facilities.	\$150	\$150	\$0
Transportation Demand Management Ordinance and User Guide	RTC-P56	Develop Model TDM Ordinance and User Guide to include provisions for both residential and non-residential projects and address program and facilities improvements in return for reductions in off-street parking requirements.	\$250	\$250	\$0
Vanpool Incentive Program	RTC 15	Assist in start up and retention of vanpools. Includes financial incentives: new rider subsidies, driver bonuses, and empty seat subsidies. Also may include installation of wifi on vans. Avg Annual Cost: \$25k/yr.	\$625	\$625	\$0
SCCRTC Total			\$305,389	\$212,610	\$92,779
SCCRTC/Caltrans					
1 - Hwy 1 Corridor Investment Program	RTC 24k	Tier 1 – program level design/environmental analysis to establish a Corridor Investment Program (CIP) to reduce congestion along the 9 mile section of Highway 1 between San Andreas/Larkin Valley Road (Aptos) and Morrissey Boulevard (Santa Cruz). [Projects identified below are increments of the Highway 1 CIP.]	\$0	\$0	\$0

Project Title	ID	Project Description/Scope	Est total cost	Constrained	Unconstrained
2 - Hwy 1: 41st to Soquel Av Auxiliary Lanes and Chanticleer Bike/Ped Bridge	RTC 24f	Construct auxiliary lanes and a bicycle/pedestrian overcrossing of Hwy 1 at Chanticleer Ave. [Project level design/environmental analysis is currently underway as part of combined Tier 1/Tier 2 environmental effort to establish a Highway 1 Corridor Investment Program (Tier 1) and take a first step toward implementation with this project (Tier 2) upon approval of the final environmental document.]	\$27,000	\$27,000	\$0
3 - Hwy 1: Park Avenue to Bay/Porter Auxiliary Lanes	RTC 24e	Construct auxiliary lanes and reconstruct Capitola Avenue overcrossing. [Part of Highway 1 CIP project (RTC 24k) but listed here as a standalone project. (EA 05-0L090)].	\$23,000	\$23,000	\$0
4 - Hwy 1: State Park Dr. to Park Ave. Auxiliary Lanes	RTC 24g	Construct auxiliary lanes. [Part of Highway 1 CIP project (RTC 24k), but listed as a standalone project.]	\$34,250	\$34,250	\$0
5 - Hwy 1: Reconstruct Morrissey Interchange	RTC 24h	Reconstruct Morrissey overcrossing with enhanced pedestrian and bicycle treatments (such as buffered or painted facilities) on both sides of the overcrossing, reconfigure ramps and local streets to accommodate the new interchange, and ramp metering. [Part of Highway 1 CIP project (RTC 24k), but listed here as standalone project.]	\$35,300	\$0	\$35,300
6 - Hwy 1: Reconstruct Soquel Avenue Interchange	RTC 24i	Reconstruct the overcrossing with enhanced pedestrian and bicycle facilities on both sides, reconfigure ramps and local streets to accommodate the new interchange, and ramp metering. [Part of Highway 1 CIP project (RTC 24k), but listed here as standalone project.]	\$63,300	\$0	\$63,300
7 - Hwy 1: Reconstruct Bay/Porter and 41st Avenue Interchange	RTC 24j	Reconstruct highway to operate as a single interchange. Includes construction of a frontage road that includes bike lanes and sidewalks connecting the Bay/Porter and 41st Ave intersections ; reconstruction of the Bay/Porter undercrossing and the 41st Avenue overcrossing with enhanced pedestrian and bicycle treatments on both sides, and reconfiguration of ramps and local streets to accommodate local traffic and ramp metering. [Part of the Highway 1 CIP project (RTC 24k), but is listed here as a standalone project.]	\$107,500	\$0	\$107,500
8 - Hwy 1: Reconstruct Remaining Interchanges, Auxiliary Lanes and Install Ramp Metering	RTC 24a	Auxiliary Lanes and interchange modifications not identified as separate projects (San Andreas/Larkin Valley, Freedom, Rio Del Mar, State Park and Park Avenue) , including reconfiguration of ramps and local streets for ramp meters, enhanced pedestrian and bike treatments (such as buffered or painted facilities) in each direction and sufficient width to allow addition of HOV lanes. Includes reconstruction of 2 railroad crossings in Aptos, bridge over Aptos Creek, and bike/ped overcrossing at Trevethan. [Part of the Highway 1 CIP project (RTC 24k), but is listed here as a standalone project.]	\$250,000	\$0	\$250,000
9 - Hwy 1: Construction of HOV Lanes from Morrissey to San Andreas Rd	RTC 24m	Construction of High Occupancy Vehicle (HOV or Carpool) Lanes on Highway 1 from San Andreas/Larkin Valley to Morrissey Boulevard. Cost excludes auxiliary lanes, reconstruction of interchanges for ramp metering, over and under crossings, new bike/ped crossing at Trevethan, and traffic operation system (TOS) elements on the corridor. [These costs are listed separately (RTC 24 a,e,f,g,h,i,j). Could be expensed under a complete Hwy 1 HOV Lane project (RTC 24, \$585,700) but currently expensed as a standalone project.]	\$60,000	\$0	\$60,000
91 - Hwy 1: HOV Lanes from Morrissey to San Andreas Rd	RTC 24	Construct HOV or Carpool lanes on Highway 1 from San Andreas/Larkin Valley to Morrissey Boulevard, including auxiliary lanes, reconstruction of interchanges with enhanced bike and pedestrian facilities, arterial and ramp modifications to allow ramp metering, a new bike/ped crossing at Trevethan, and traffic operation system (TOS) element. [Cost if built in entirety: \$585,700. See stand alone projects (RTC24f,e,g,h,i,j,a,m) for cost of incremental implementation.]	\$0	\$0	\$0

Project Title	ID	Project Description/Scope	Est total cost	Constrained	Unconstrained
92 - Hwy 1: TSM Project from Morrissey to San Andreas Rd.	RTC 24n	Construct the TSM project alternative as described in the Tier 1 environmental study to establish a Highway 1 Corridor Investment Program. Project includes auxiliary lanes, modifications of interchanges with enhanced bike and pedestrian treatment, arterial and ramp modifications to allow ramp metering, a new bike/ped crossing at Trevethan, and traffic operation system (TOS) element. [Cost if built in entirety, rather than incrementally: \$249,100. Assumes RTC 24f has been completed.]	\$0	\$0	\$0
Hwy 1 Bicycle/Ped Overcrossing at Mar Vista	RTC 30	Construct a bicycle/pedestrian overcrossing of Hwy 1 in vicinity of Mar Vista Drive, providing improved access to Seacliff and Aptos neighborhoods and schools.	\$7,550	\$7,550	\$0
Hwy 1 Ramp Metering: Southern Sections	CT-P01	Installation of ramp meters at interchanges from Mar Monte Ave to Hwy 129/Riverside Dr.	\$20,000	\$0	\$20,000
SCCRTC/Caltrans Total			\$627,900	\$91,800	\$536,100
SCMTD					
ADA Paratransit Bus Replacements	MTD 02	Replace vans for ADA paratransit fleet (including Accessible Taxi program). Avg cost: \$65k each for 34 vans every 5 years.	\$12,650	\$3,970	\$8,680
ADA Paratransit Service - Continuation of Existing Service	MTD-P10C	Operation & maintenance cost of existing Paratransit service. Avg Annual Cost: \$4.6M.	\$101,000	\$101,000	\$0
ADA Service Expansion	MTD-P11	Add capacity to meet increased trip demand thru 2035. Assumes 3% increase/year starting in 2010. Annual avg: \$140k.	\$3,500	\$1,750	\$1,750
Automatic Vehicle Locator and Automatic Passenger Counter Systems	MTD-P50	Automatic Vehicle Locator and Automatic Passenger Counter systems on all METRO buses. Real time bus arrival/departure displays at stops. Necessary IT upgrades.	\$2,350	\$0	\$2,350
Bike Station at Capitola Mall	MTD-P23	Establish bike station at Capitola Mall, especially to serve UCSC. Would be joint mall, UCSC, MTD project.	\$1,000	\$0	\$1,000
Bikes on Buses Expansion	MTD-P20	Add additional space for bikes on buses when/if new technology becomes available.	\$1,500	\$750	\$750
Bus Rapid Transit	MTD-P15	Construct park & ride lots, transit centers and grade-separation where feasible to operate bus rapid transit to reduce congestion on Highway 1.	\$25,920	\$23,328	\$2,592
Bus Rebuild and Maintenance	MTD-P31	Rebuild engines; Fleet maintenance equipment.	\$2,500	\$2,500	\$0
Bus Stop Upgrades	MTD-P09	Install, replace, repairs, and otherwise improve bus shelters and stops.	\$8,100	\$2,100	\$6,000
Commuter/Subscription Bus Program	MTD-P18	Capital and operating for subscription buses to areas not currently served by express buses (similar to large vanpool).	\$2,000	\$0	\$2,000
Deviated Fixed-Route Pilot Program	MTD-P43	Pilot project allowing buses to make minor route modifications to address needs of senior and disabled riders.	\$100	\$0	\$100
Disaster Response Mobile Command	MTD-P34	Field unit for Disaster Response Management.	\$500	\$0	\$500
Electric Non-Fleet Vehicles	MTD-P47	Replace 14 vehicles to EV.	\$560	\$560	\$0
EV Fast Charging Stations	MTD-P48	Install 5 electric vehicle charging stations at transit centers.	\$1,000	\$1,000	\$0
Hwy 1 Express Buses	MTD-P27	Hwy 1 express bus replacements - 6 Buses @ \$500k ea. Replace every 12 years.	\$6,000	\$1,980	\$4,020
Hwy 17 Express Service - Cont. of Existing Service Levels	MTD-P10B	Operation & maintenance cost of existing bus service. Avg annual cost: \$2.4M.	\$53,000	\$53,000	\$0

Project Title	ID	Project Description/Scope	Est total cost	Constrained	Unconstrained
Hwy 17 Express Service Expansion	MTD-P12	Add trips to extend service hours for Highway 17 express. Capital and Operating costs. Annual expansion cost: \$175K/yr.	\$4,500	\$2,250	\$2,250
Inter-County Paratransit Connection	MTD-P44	Establish paratransit connection location with Santa Clara County.	\$1,250	\$1,250	\$0
Local Transit - Continuation of Existing Service Levels 2010-2035	MTD-P10	Operation & maintenance cost of existing local fixed route bus service (Based on 2014budget-\$37M/year).	\$817,000	\$817,000	\$0
Local Transit Service Restoration and Expansion	MTD-P14	Restore local service to 2001 levels, then expand service 10% including expanded service within SLV, City of SC and Watsonville, express buses, improved service to industrial areas. \$6.7M/yr operating, \$9M capital costs (9 buses & onetime replacement).	\$177,000	\$7,080	\$169,920
Mainline Routes Runtime Recalibration	MTD 20	Data collection, analysis and recalibration of route runtimes to improve reliability of arrival and departure timepoints/schedule for major routes (69, 71, 91).	\$30	\$30	\$0
Metro Bus Replacements	MTD-P04	Replace fleet at the end of normal bus lifetime (every 12 years, ~\$500k each).	\$125,500	\$43,090	\$82,410
Metro facilities repair/upgrades	MTD-P36	Maintain and upgrade physical plant.	\$3,785	\$3,785	\$0
MetroBase Phase II	MTD-P38	Expansion to 150 bus fleet; purchase new property.	\$15,000	\$0	\$15,000
Non-Revenue Vehicles	MTD-P32	Replace support vehicles.	\$1,200	\$0	\$1,200
Pacific Station- Bike Station	MTD-P49	Establish bike station at Pacific Station.	\$400	\$400	\$0
ParaCruz Mobile Data Terminals; Radios	MTD-P30	Install mobile data terminals in vehicles	\$732	\$732	\$0
ParaCruz Operating Facility	MTD-P28	Design, Right-of-Way and construction for new ParaCruz Operating Facility.	\$12,000	\$0	\$12,000
ParaCruz Van Replacement 2014	MTD 21	4 replacement vehicles for ADA Complementary Paratransit Service. (2 light-duty CNG vans & 2 medium-duty gas fueled paratransit buses)	\$431	\$431	\$0
Parking Structure	MTD-P39	Joint venture w/City of Santa Cruz Tannery Arts Center.	\$4,000	\$0	\$4,000
Replacement Transit Fareboxes	MTD 18	Electronic registering fareboxes, includes prepaid card fare collection program. Future replacement needs from 2015-2035 unconstrained.	\$9,100	\$2,350	\$6,750
Santa Cruz Metro Center/Pacific Station Renovation	MTD 13	Renovate main transit center in downtown Santa Cruz to accommodate additional bus lanes, parking, new transit plaza, and mix of other land uses. Part of larger redevelopment project that includes housing and retail.	\$12,000	\$2,100	\$9,900
Senior/Disabled/Low-Income Fixed-Route Transit Incentives	MTD-P42	Incentives to encourage fixed-route bus ridership. May include free/reduced rates for seniors during off-peak hours, free bus passes to ADA eligible persons, bus pass subsidies for low income riders transportation to employment, collapsible shopping carts and other incentives to encourage use of fixed-route system.	\$3,125	\$2,500	\$625
Signal Priority/Pre-Emption for Buses	MTD-P21	Enable coach operators to actuate traffic signals to prolong green or change red lights to improve transit running time.	\$2,000	\$2,000	\$0
Small Bus Fleet	MTD-P24	Purchase smaller buses for travel through residential neighborhoods. Cost currently unknown.	\$0	\$0	\$0
Solar Panels for MetroBase	MTD-P29	Energy reduction through installation of solar panels on the new MetroBase Facilities.	\$6,000	\$0	\$6,000

Project Title	ID	Project Description/Scope	Est total cost	Constrained	Unconstrained
Transit Mobility Training Program Expansion	MTD-P19	Expand public outreach and training to encourage fixed route, rather than Paratransit, use. Outreach may also involve other partners (ex. DMV, doctors, senior centers, etc). Avg annual cost: \$80K/yr.	\$1,200	\$600	\$600
Transit Security and Surveillance Systems	MTD-P33	Enhance passenger safety and facilities security. Emergency response systems.	\$1,100	\$1,100	\$0
Transit System Technology Improvements	MTD-P35	Automated Data Processing software, telephones, portable computers, servers, Customer Information Kiosks, digital ID processing equipment. Maintain and upgrade office software and hardware, bandwidth, web site, phone network, to enhance productivity, customer service and maintain functionality.	\$5,310	\$980	\$4,330
Transit Technological Improvements	MTD-P06	IT software and hardware upgrades for scheduling, customer service, planning systems. Upgrades every 5 years.	\$5,000	\$1,838	\$3,163
Transit/Paratransit Driver Emergency Training	MTD-P45	Provide training equipment for drivers on new mobility devices (scooters, motorized wheelchairs) plus emergency training and biohazard container and clean-up kits for vehicles.	\$250	\$250	\$0
UCSC Bus Service Expansion	MTD-P13	Increase frequency on routes serving UCSC to eliminate standing loads: Capital and Operating costs.	\$14,000	\$7,000	\$7,000
Water Harvesting for River St.	MTD-P40	Water capture for bus wash facility.	\$1,500	\$0	\$1,500
Watsonville Transit Center Improvements	MTD-P46	Upgrades to Watsonville Transit Center.	\$1,000	\$1,000	\$0
SCMTD Total			\$1,446,093	\$1,089,704	\$356,390
Seniors Council					
Senior Employment Ride Reimbursement	RTC-P43	Reimburse low income seniors for transit expenses to/from employer sites.	\$1,600	\$1,600	\$0
Seniors Council Total			\$1,600	\$1,600	\$0
UCSC					
Alternative Fuel Fleet Vehicles	UC-P64	Purchase and upgrade fleet vehicles to alt. fueled vehicles (refuse trucks, street sweepers, fleet cars, etc.)	\$3,000	\$0	\$3,000
Alternative Fuel/Electric Shuttle Vehicles	UC-P22	Capital acquisition of vehicles.	\$10,000	\$0	\$10,000
Bike Shuttle Vehicle Acquisition	UC-P51	Acquire more alt fueled vehicles for bike shuttle (and possible expansion).	\$500	\$0	\$500
Bus Tracking and AVL Transit Programs	UC-P62	GPS bus tracking and Automatic Vehicle Locator programs inform travelling population of transit locations so they can make informed mode choices.	\$250	\$250	\$0
Coastal Marine Campus Bike Improvements	UC-P49b	Includes covered bike parking, racks, and showers.	\$300	\$300	\$0
Coastal Marine Campus Pedestrian Improvements	UC-P49c	Includes covered bike parking, racks, and showers.	\$2,000	\$2,000	\$0
Coastal Marine Campus Roadway and Transit Improvements	UC-P49a	New Central Roadway/transit shelters and amenities, parking.	\$7,000	\$4,000	\$3,000
College Nine/Communications Pedestrian Bridge	UC-P39	Construct pedestrian bridge.	\$1,000	\$0	\$1,000
College Nine/Crown College Pedestrian Bridge	UC-P37	Construct pedestrian bridge.	\$1,500	\$0	\$1,500

Project Title	ID	Project Description/Scope	Est total cost	Constrained	Unconstrained
Coolidge Overlook	UC-P42	Improve overlook for parking, benches and signage for Sanctuary.	\$600	\$0	\$600
Disability Van Service	UC-P75	Operate disability van service (\$240k/yr).	\$5,280	\$5,280	\$0
East Collector Transit Hub	UC-P46	New transit hub at East Collector (East Remote) lot.	\$5,000	\$0	\$5,000
Electric Vehicle Charging Stations	UC-P65	Add additional electrical infrastructure and install electric vehicle charging stations around campus.	\$300	\$300	\$0
Great Meadow Bike Path Safety Improvements	UC-P60	Bikeway safety and maintenance improvements; potential for separate pedestrian improvements to minimize conflicts.	\$3,000	\$900	\$2,100
Hagar/McLaughlin Intersection Improvements	UC-P10	Signal, pedestrian safety improvements(including new crosswalk) and roadway improvements.	\$500	\$0	\$500
Hagar/Steinhart Intersection Improvements	UC-P14	Signal, pedestrian safety improvements, roadway improvements.	\$1,000	\$0	\$1,000
Hagar-Coolidge Connector Road/Hagar/East Remote Intersection Improvements	UC-P47	New roadway connector, including bicycle lanes, between Hagar Drive and Coolidge, plus Hagar/East Remote Intersection Improvements: signal, pedestrian safety improvements and roadway improvements.	\$3,000	\$0	\$3,000
Heller Drive Bicycle Lanes (Empire Grade to Porter College)	UC-P56	Add Class II bicycle lanes in downhill direction as feasible.	\$800	\$0	\$800
Kerr/Porter Rd Pedestrian Bridge ADA Upgrades	UC-P72	Modify bridge to improve access.	\$3,000	\$0	\$3,000
Kresge/Core West Pedestrian Bridge: ADA Upgrades	UC-P57	Modify bridge to enhance ADA access.	\$3,000	\$0	\$3,000
McLaughlin Drive Bike Lanes/Pedestrian Enhancements	UC-P30	Install Class 2 bike lanes and enhance pedestrian circulation on University campus roadway.	\$2,500	\$0	\$2,500
Meyer Drive Extension/Jordan Gulch Bridges	UC-P04	Extension of Meyer Drive from existing Meyer Drive to Hagar Drive. Includes construction of two bridges, pedestrian, and bicycle facilities.	\$20,000	\$0	\$20,000
Northern Entrance	UC-P08	Construct new access road including Cave Gulch Bridge to Empire Grade and road and bicycle lanes to Northern Heller Dr. for access and fire safety.	\$10,000	\$0	\$10,000
Northern Loop Roadway	UC-P07	Construct new roadway, including bicycle lanes, on upper campus. Will be phased. Phase I: Chinquapin Extension to support Social Science 3.	\$18,000	\$0	\$18,000
Parking Management Technology Improvements	UC-P68	Updating existing parking management technologies to allow for more effective management, additional parking management at Coastal Marine Campus and 2300 Delaware site.	\$400	\$400	\$0
Pedestrian Directional Map/Wayfinding System	UC-P38	Develop and install signs throughout campus.	\$500	\$500	\$0
Porter/Performing Arts Pedestrian Bridge	UC-P36	Construct pedestrian bridge.	\$1,000	\$0	\$1,000
Science Hill/North Academic Core Pedestrian Bridge	UC-P40	Construct pedestrian bridge.	\$1,000	\$0	\$1,000
Sidewalk/Pedestrian Improvements	UC-P50	Widen sidewalks/improve ped access in areas of campus.	\$5,000	\$0	\$5,000
Solar PVs on Campus Parking Lots	UC-P71	Install new solar arrays on campus parking lots. Cost TBD.	\$0	\$0	\$0

Project Title	ID	Project Description/Scope	Est total cost	Constrained	Unconstrained
Spring Street Bikeway	UC-P34	Construct bikeway connecting Spring Street to Hagar Ct.	\$300	\$0	\$300
Steinhart Way Multimodal Improvements	UC-P03	Roadway improvements for shuttles, bikes and pedestrians.	\$500	\$0	\$500
Transit Pullouts and Shelters Enhancements	UC-P19	Construction and installation of transit pullouts and reconstruction of shelters throughout campus.	\$1,500	\$0	\$1,500
Transit Vehicles (ongoing)	UC-P23	Ongoing capital acquisition of transit vehicles for on-campus transit and University shuttles.	\$5,000	\$5,000	\$0
Transportation-Related Stormwater Management Projects	UC-P66	Retrofitting existing transportation facilities and developing new facilities with new stormwater management techniques.	\$1,000	\$1,000	\$0
Traveller Safety Education/Information Programs	UC-P61	Bike/pedestrian safety programs; light and helmet giveaways, safety classes, distracted driver programs, bus etiquette program.	\$100	\$100	\$0
UCSC - Metro Station Bus Rapid Transit Improvements	UC-P48	Bus Rapid Transit Improvements between Metro Station, Bay Street Corridor, and UCSC Roadways.	\$5,000	\$0	\$5,000
UCSC Bicycle Facilities	UC-P55	Add bicycle facilities on campus roadways and paths. Lump sum of projects, including but not limited to UCSC Bicycle Plan that are not listed individually elsewhere in the RTP.	\$1,000	\$0	\$1,000
UCSC Bicycle Parking Improvements	UC-P33	Install bicycle parking facilities to serve bicycle commuters to the University.	\$500	\$500	\$0
UCSC Bike Loan Program	UC-P52	Develop and implement a bike loan program for UC students.	\$1,000	\$0	\$1,000
UCSC Bike Showers/Storage Lockers	UC-P32	Install showers and storage facilities to serve bicycle commuters to the University.	\$600	\$0	\$600
UCSC Commute Counseling Program	UC-P69	Staffing program development to individually market to UCSC affiliates on more sustainable means of travel to campus.	\$3,000	\$3,000	\$0
UCSC Commuter Incentive Programs	UC-P70	Provide ongoing support and development of new programs to encourage travel to campus via sustainable modes of travel.	\$1,500	\$1,500	\$0
UCSC Lump Sum Roadway Maintenance	UC-P59	Repaving and rehabilitation of roadways on UCSC campus to maintain existing network.	\$10,000	\$3,000	\$7,000
UCSC Main Entrance Improvements	UC-P01	Realign roadway, transit pullout/shelter, relocate bike parking, construct pedestrian path, historic resource analysis. Work may be done in conjunction with City Roundabout project.	\$2,000	\$0	\$2,000
UCSC Parking Operations & Maintenance	UC-P73	Operate and administer the parking operations for UCSC including planning, TDM, marketing and debt service.	\$68,200	\$68,200	\$0
UCSC Pedestrian/Transit Zone	UC-P44	Pedestrian safety improvements including, colored/textured asphalt and signage at various locations on core campus roadways.	\$1,000	\$0	\$1,000
UCSC Traffic Control	UC-P58	Non-traditional traffic control/crossing guard program at key intersections on UCSC campus to improve pedestrian and vehicle safety, reduce conflicts, improve travel times.	\$2,500	\$2,500	\$0
UCSC Transit Service	UC-P74	Operate the on campus shuttle service and Night Owl (\$3.01m/year).	\$66,220	\$66,220	\$0
UCSC Vanpool Program	UC-P63	Maintain, operate and expand upon UCSC vanpool program.	\$8,400	\$8,400	\$0
West Gate Improvements	UC-P02	Improve kiosk and turnaround for redirected traffic on Heller/Empire Grade.	\$500	\$0	\$500
Zimride Emergency Preparedness Database	UC-P67	Creating a new database through Zimride to have emergency response evacuation of UCSC campus.	\$300	\$0	\$300
UCSC Total			\$289,550	\$173,350	\$116,200

Project Title	ID	Project Description/Scope	Est total cost	Constrained	Unconstrained
<i>Various Agencies</i>					
Active TransportationPlan	VAR-P39	Prepare Active Transportation Plans that address bicycle, pedestrian, safe routes to schools and complete streets facilities.	\$2,300	\$550	\$1,750
Bicycle Sharrows	VAR-P03	Install sharrows (shared roadway marking) designating areas where bicyclists should ride on streets, especially when bicycle lanes are not available. To be implemented by local jurisdictions.	\$500	\$250	\$250
Bicycle Treatments for intersection improvements (ADD)	VAR-P32	Add painted bike treatments (such as buffered and/or painted bike lanes, bike boxes, bike detection and signals), at major intersections.	\$4,000	\$4,000	\$0
Bike Share	VAR-P16	Establish and maintain an urban centered bike share program allowing county residents to access loaner bikes at key locations such as downtowns, transit centers, shopping districts, and tourist destinations.	\$5,000	\$0	\$5,000
Bike-Activated Traffic Signal Program	VAR-P05	Provide traffic signal equipment to ensure that the traffic signals will detect bicycles just as cars are detected and ensure that the appropriate traffic signal phase is activated by the bicycles.	\$1,000	\$1,000	\$0
Cabrillo College TDM Programs	RTC 33	Provide students and employees at all four Cabrillo College campuses with education, promotion, and incentives that support the use of sustainable transportation modes. Develop information, programs and services customized to meet the transportation needs of the Cabrillo College community. 'Provide Sustainable Transportation education, promotion, and Go Green program enrollment to Cabrillo College students and employees. Partner with Cabrillo staff and students to reduce SOV trips to the Aptos, Watsonville and Scotts Valley campuses. Provided targeted information and services to Cabrillo members.	\$1,515	\$795	\$720
Carsharing Program	VAR-P06	Program to assist people in sharing a vehicle for occasional use. Implementing Agency TBD, varies.	\$2,500	\$0	\$2,500
Climate Action Transportation Programs	RTC-P48	Projects that reduce greenhouse gas emissions through reducing vehicle trips and vehicle miles traveled, increasing fuel efficiency and expanding use of alternatively fueled vehicles. Includes comprehensive outreach and education campaigns, a countywide emergency ride home for those using alternatives, and TDM incentive programs: \$100k/year.	\$2,500	\$1,250	\$1,250
Complete Streets Implementation	VAR-P27	Additional projects for complete streets implementation that would fall under the Complete Streets Guidelines.	\$10,000	\$0	\$10,000
Coolidge Drive Reconstruction	VAR-P23	Reconstruction of roadway and bike lane.	\$3,000	\$0	\$3,000
Countywide Pedestrian Signal Upgrades	RTC-P26	Grant program to fund installation of audible and count-down intersection equipment to facilitate crossings by visually and mobility impaired persons.	\$2,000	\$1,000	\$1,000
Countywide Senior Driving Training	VAR-P24	Coordinate and enhance current programs that help maturing drivers maintain their driving skills and provides transitional info about driving alternatives. (Current programs are run by AARP and CHP.)	\$80	\$80	\$0
Eco-Tourism - Sustainable Transportation	VAR-P17	Provide sustainable transportation information, incentives and promotions to the estimated one million visitors to Santa Cruz County. Work with the Santa Cruz County Conference and Visitors Council, local lodgings, and tourist attractions.	\$1,000	\$500	\$500
Environmental Mitigation Program	VAR-P38	Allocate funds to protect, preserve, and restore native habitat that construction of transportation projects listed in SCCRTC's RTP could potentially impact. EMP funds will be for uses such as, but not limited to, purchasing land prior to project development to bank for future mitigation needs, funding habitat improvements in advance of project development to leverage and enhance investments by partner agencies.	\$5,500	\$0	\$5,500

Project Title	ID	Project Description/Scope	Est total cost	Constrained	Unconstrained
Hwy 1 Bike/Ped Bridge (Cabrillo-New Brighton)	CT-P07a	Construction of bike/ped bridge connecting New Brighton State Beach and Cabrillo College as part of larger Nisene SP to the Sea trail concept. Lead agency TBD.	\$8,000	\$0	\$8,000
Local Arterial ITS Infrastructure	VAR-P11	ITS (Intelligent Transportation Systems): advanced electronics and information technologies to increase the safety and efficiency of the surface transportation system, including vehicle detection devices along major arterials in urbanized areas to alert motorists of incidents.	\$600	\$0	\$600
Lump Sum Bridge Preservation	VAR-P14	Painting, Barrier Rail Replacement, Low Water Crossing, Rehab, and Replacement bridges for SHOPP and Highway Bridge Program (HBP).	\$45,934	\$45,934	\$0
Lump Sum Emergency Response Local Roads	VAR-P13	Lump sum for repair of local roads damaged in emergency. (Based on average ER/FEMA/CalEMA funds, storm damage, fire, etc. Costs of repairs assumed under lump sum maintenance and operations within local jurisdiction listings.)	\$0	\$0	\$0
Mission St/Hwy 1 Bike/Truck Safety Campaign	VAR-P18	Partnership with road safety shareholders including Caltrans, UCSC, City of Santa Cruz, Ecology Action, trucking companies and others to improve bike/truck safety along the Mission Street corridor. Provide safety presentations, videos, brochures, safety equipment, etc.	\$500	\$500	\$0
Mobility Management Center	VAR-P04	Centralized one-stop-shop for information and resources on specialized transportation options. May be combined with 511 or 211 efforts. Implementing agency TBD. Est. annual cost: \$100-300k/yr.	\$7,500	\$0	\$7,500
Neighborhood Greenways	VAR-P33	Implement greenways which gives priority to bicycles and pedestrians on low volume, low speed streets including, way finding and pavement markings, bicycle treatments in areas identified for more intensified development in Sustainable Communities Strategy.	\$5,000	\$0	\$5,000
Park and Ride Lot Development	VAR-P26	Upgrade and maintain existing park and ride lots for commuters countywide. Secure additional park and ride lot spaces for motorized vehicles and bicycles. Long range plan: identify, purchase land, construct Park & Ride lots.	\$8,000	\$2,000	\$6,000
Planning for Transit Oriented Development for Seniors	VAR-P25	Evaluate opportunities for Transit Oriented Development serving seniors.	\$75	\$75	\$0
Plugin Electric Vehicle Access, Education & Promotion	VAR-P21	Target motorist looking for a cleaner vehicle by providing access, education and promotion on ever evolving plugin electric vehicles (PEV). Provide PEV car share, rental and demo drives, educational workshops, online, and hard copy information. Promote through current EA groups, partners, media and other available sources.	\$800	\$0	\$800
Public Transit Marketing	VAR-P20	Initiatives that increase public transit ridership including discount passes, free fare days, commuter clubs, and promotional and marketing campaigns.	\$1,500	\$750	\$750
Public/Private Partnership Bicycle and Pedestrian Connection Plan	VAR-P29	Develop model for assisting local jurisdictions in working with private property owners to allow bicycle and pedestrian access through private property in areas identified for more intensified development in Sustainable Communities Strategy.	\$150	\$150	\$0
Public/Private Partnership Transit Stops and Pull Outs Plan	VAR-P30	Develop model for assisting local jurisdictions in working with businesses to install transit pullouts and shelters on property in areas identified as high quality transit corridors in Sustainable Communities Strategy.	\$150	\$150	\$0
Safe Paths of Travel	VAR-P08	Regional program to construct and/or repair pedestrian facilities adjacent to high frequency use origins and destinations, particularly near transit stops.	\$3,000	\$3,000	\$0
Safe Routes to Schools Studies	VAR-P10	Studies to assess pedestrian and bicycle safety near schools.	\$200	\$200	\$0
Safety Plan	VAR-P36	Develop a safety plan that addresses traffic related injuries and fatalities for all modes of transportation.	\$300	\$0	\$300

Project Title	ID	Project Description/Scope	Est total cost	Constrained	Unconstrained
School Complete Streets Projects	VAR-P35	Implement ped/bike programs and facilities near schools.	\$10,000	\$0	\$10,000
School Safety Programs	VAR-P19	Bicycle and walking safety education and encouragement programs targeting K-12 schools in Santa Cruz County including Ecology Action's Safe Routes to School and Bike Smart programs. Provide classroom and on the bike safety training in an age appropriate method. Provide a variety of bicycle, walking, busing and carpooling encouragement projects ranging from bike to school events, to incentive driven tracking, and educational support activities.	\$3,700	\$1,850	\$1,850
TDM Individualized Employer/Multiunit Housing Program	RTC-P53	Implement individualized employer and multiunit housing TDM programs with incentives for existing development.	\$4,500	\$2,250	\$2,250
Transit Oriented Development Grant Program	RTC-P25	Smart growth grant program to fund TODs that encourage land use and transportation system coordination. May include joint child care/PNR/transit centers.	\$5,000	\$2,500	\$2,500
Transit Priority	VAR-P34	Install transit queues at major intersections.	\$5,000	\$2,500	\$2,500
Transportation Demand Management Plan	VAR-P37	Collaborate with other organizations to develop a coordinated plan for transportation demand management program implementation for Santa Cruz County.	\$300	\$0	\$300
Transportation for Low Income Youth	VAR-P15	Safe, reliable transportation services for foster care children to/from school. Avg annual cost: \$100k/yr.	\$2,500	\$0	\$2,500
Transportation System Electrification	VAR-P07	Partnership with local gov't agencies, electric vehicle manufactures, businesses, and Ecology Action to establish electric vehicle charging stations for EV's, plug-in hybrids, NEV's, as well as ebikes and escooters. Work with manufacturers on developing advanced electric vehicles and educating the public regarding the ease of use and benefits of electric vehicles.	\$50,000	\$0	\$50,000
Uncontrolled Pedestrian Crossing Improvements	VAR-P31	Implement improvements to uncontrolled pedestrian crossing such as painted and/or raised crosswalks, flashing beacons and pedestrian islands.	\$5,000	\$2,500	\$2,500
Various Agencies Total			\$208,604	\$73,784	\$134,820
Volunteer Center					
Volunteer Center Transportation Program	VC-P1	Program providing specialized transportation for out of county trips. Constrained=existing TDA allocations.	\$3,750	\$1,540	\$2,210
Volunteer Center Total			\$3,750	\$1,540	\$2,210
Watsonville Airport					
Lump Sum Watsonville Airport Capital Projects	AIR-P01	Projects from the Watsonville Airport Capital Improvement Program. Includes new hangers, reconstruction of aviation apron, security features, and runway extensions.	\$26,500	\$12,188	\$14,312
Watsonville Airport Operations	AIR-P02	Ongoing operations/maintenance. Average \$2M/year.	\$44,000	\$44,000	\$0
Watsonville Airport Total			\$70,500	\$56,188	\$14,312
Total Within Projected Funds (Constrained)				\$2,825,476	
Minimum New Funds Needed (Unconstrained)				\$2,889,849	
*For some projects no cost estimate was available thus was not included in this total					