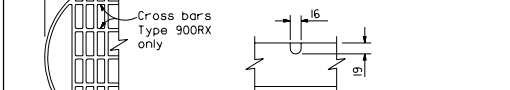
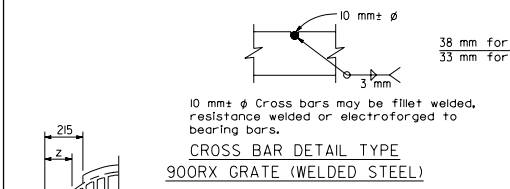


TYPE 900R AND 900RX GRATE DETAILS



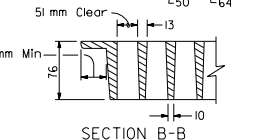
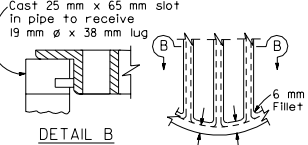
MODIFIED TYPE 900R AND 900RX GRATE FOR ODI INLET

NOTES

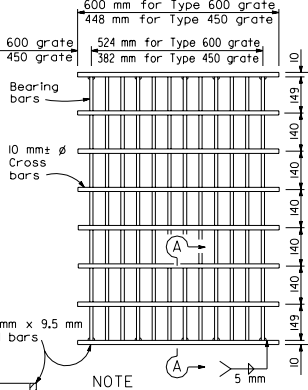
- When alternative grates are allowed - Final pay based on alternative with the lesser mass - Final pay based on alternative with the lesser mass.
- Seal welding at all surfaces not required when grates are galvanized.
- Use frame shown on Standard Plan D74A, D74B or D77A as appropriate.
- When type 600-10S, 600-12X or 600-13 grates are used with GDO inlets, a 6.4 mm x 89 mm x 10.4 mm steel bar shall be welded across the center of inlet frame to separate the individual grates.

GRATE BAR SPACING TABLE

TYPE	NO. OF BARS	CLEAR BAR SPACING	Y (mm)		Z (mm)
			100 mm SPACING	150 mm SPACING	
900R	13	51 mm	54	-	-
900RX (Steel)	15	51 mm	14	95	146
900RX (Cast)	13	51 mm	54	95	146
900R Mod	12	51 mm	54	-	127
900RX Mod (Steel)	13	51 mm	14	95	146
900RX Mod (Cast)	12	51 mm	54	95	146

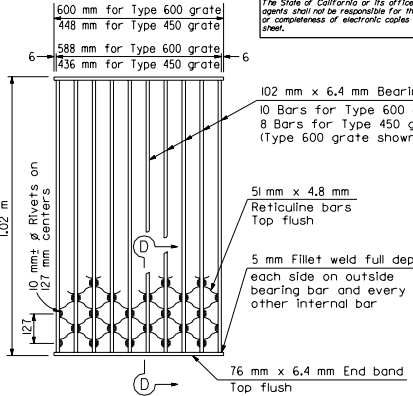


ALTERNATIVE CAST NODULAR IRON GRATE OR CAST STEEL GRATE TYPE 900R AND 900RX

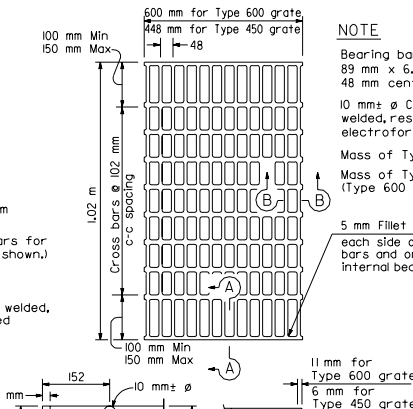


TYPE 450-9X AND 600-12X GRATE (Welded Steel)

INLET TYPE	GRATE TYPE	NO. OF GRATES	MASS (kg)
ODI	900RX (Mod)	1	89
GMP, GCP, GCPI	900RX	1	98
ODI	900R (Mod)	1	100
GMP, GCP, GCPI	900R	1	107



TYPE 450-8S AND 600-10S GRATE (Welded Steel) Reticuline type



TYPE 450-10 AND 600-13 GRATE (Welded Steel)

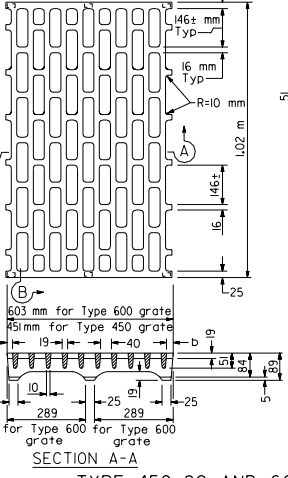
The State of California or its officers or agents shall not be responsible for the accuracy or completeness of electronic copies of this plan sheet.



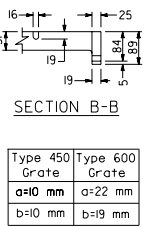
DIST	COUNTY	ROUTE	KILOMETER POST TOTAL	POST PROJECTIONS	SHEET NO.	TOTAL SHEETS

Clara DeCoy
REGISTERED CIVIL ENGINEER
No. C34547
Exp. 9-30-99
July 1, 1999
PLANS APPROVAL DATE

REGISTERED PROFESSIONAL SEAL
CLARA DECOY
CIVIL ENGINEER
STATE OF CALIFORNIA



TYPE 450-8C AND 600-10C GRATE (Cast nodular iron)



TYPE	NO. OF GRATES	MASS (kg)
600-10C	2	177
600-10S	2	207
600-12X	2	215
600-13	2	170
600-10C	1	92
600-10S	1	104
600-12X	1	108
600-13	1	85
450-8S	1	85
450-9X	1	85
450-10	1	68
450-8S	2	170
450-9X	2	170
450-10	2	135
600-10C	2	183
600-10S	2	208
600-12X	2	217
600-13	2	171

BASIS FOR MISC IRON & STEEL FINAL PAY MASSES FOR DRAINAGE INLETS

INLET TYPE	GRATE TYPE	NO. GRATES	MASS (kg)
600 (SEE NOTE 4)	600-10C	2	177
	600-10S	2	207
	600-12X	2	215
	600-13	2	170
G0,G0L,G0C2,G3,G4 (TYPE 600)	600-10C	1	92
	600-10S	1	104
	600-12X	1	108
	600-13	1	85
G4 (TYPE 450) G5,G6	450-8S	1	85
	450-9X	1	85
	450-10	1	68
GT-1,GT-2	450-8S	2	170
	450-9X	2	170
	450-10	2	135
GT-3,GT-4	600-10C	2	183
	600-10S	2	208
	600-12X	2	217
	600-13	2	171

BICYCLE PROOF GRATE DETAILS

NO SCALE
ALL DIMENSIONS ARE IN MILLIMETERS UNLESS OTHERWISE SHOWN