

SAFE ON 17

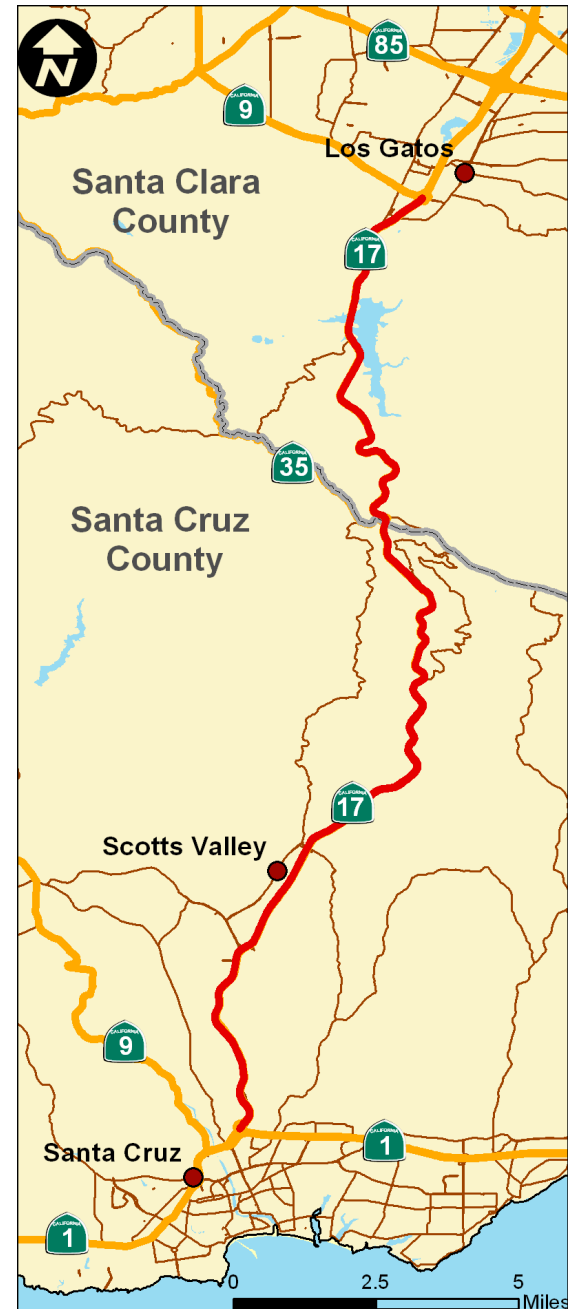
2015 Annual Report



Santa Cruz County Regional Transportation Commission

May 5, 2016

Highway 17 Safety Corridor



Collision Reduction Strategies

CHP Enforcement



Highway Improvements



Public Education

Role of RTC in Safe on 17



Fund CHP Extra Enforcement

SAFE ON 17
Highway 17 Safety Corridor

2015 Annual Report
January 1, 2015 to December 31, 2015

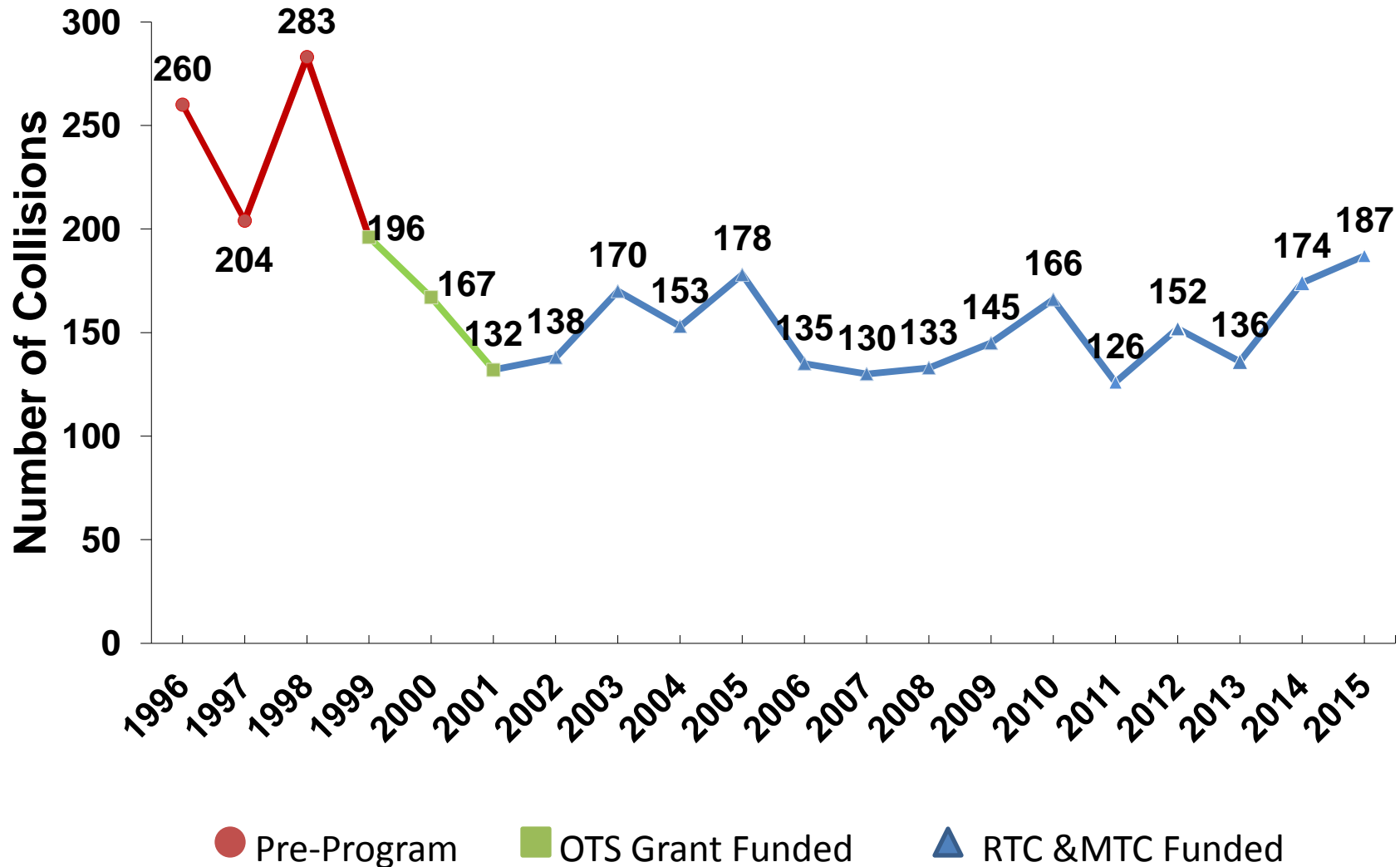


Annual Report

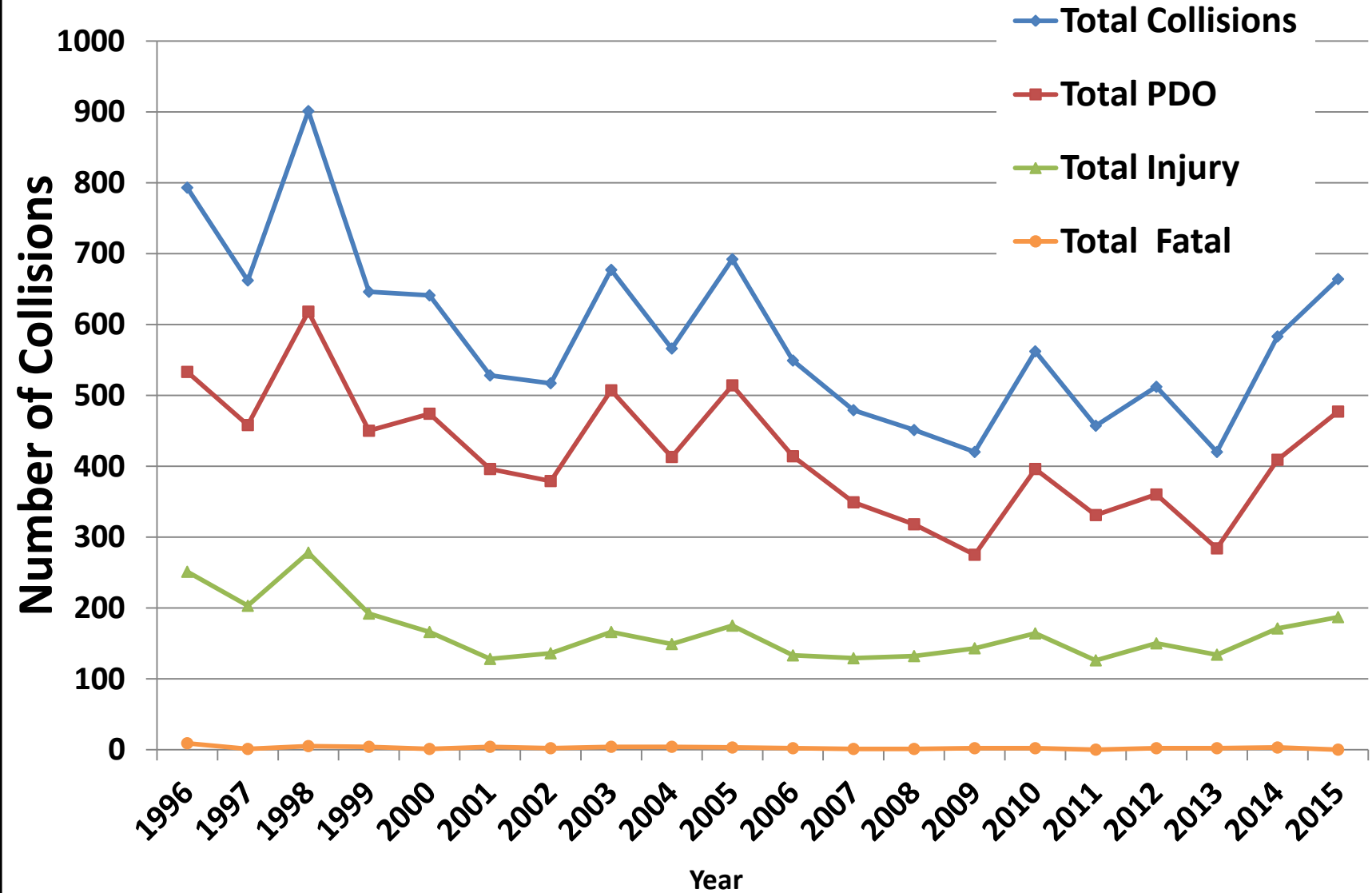


Facilitate Safe on 17 meetings

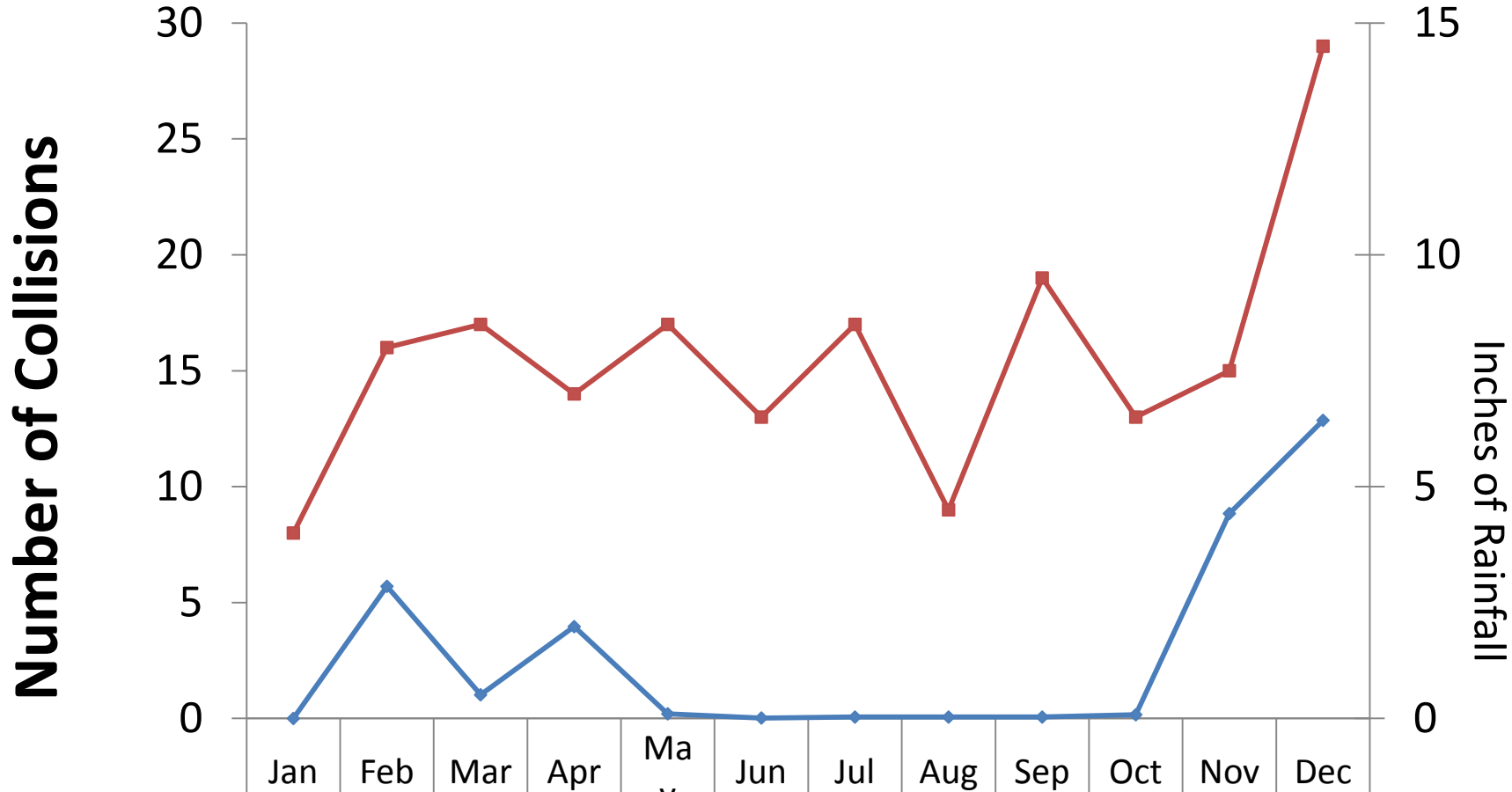
Annual Total Fatal & Injury Collisions Highway 17



Highway 17 Historical Collision Data



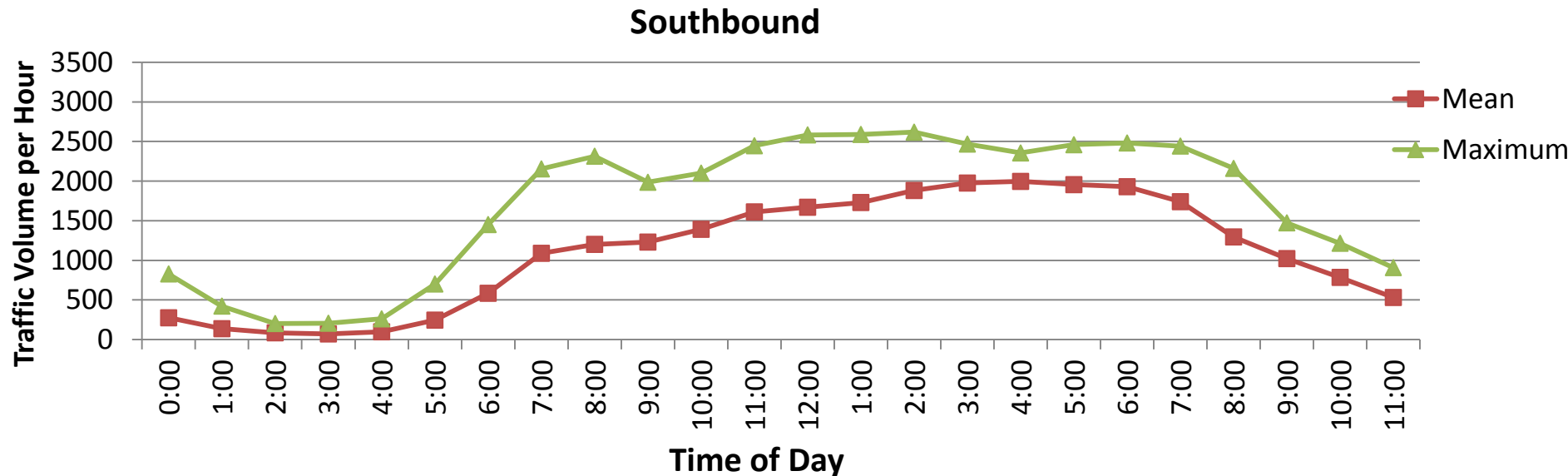
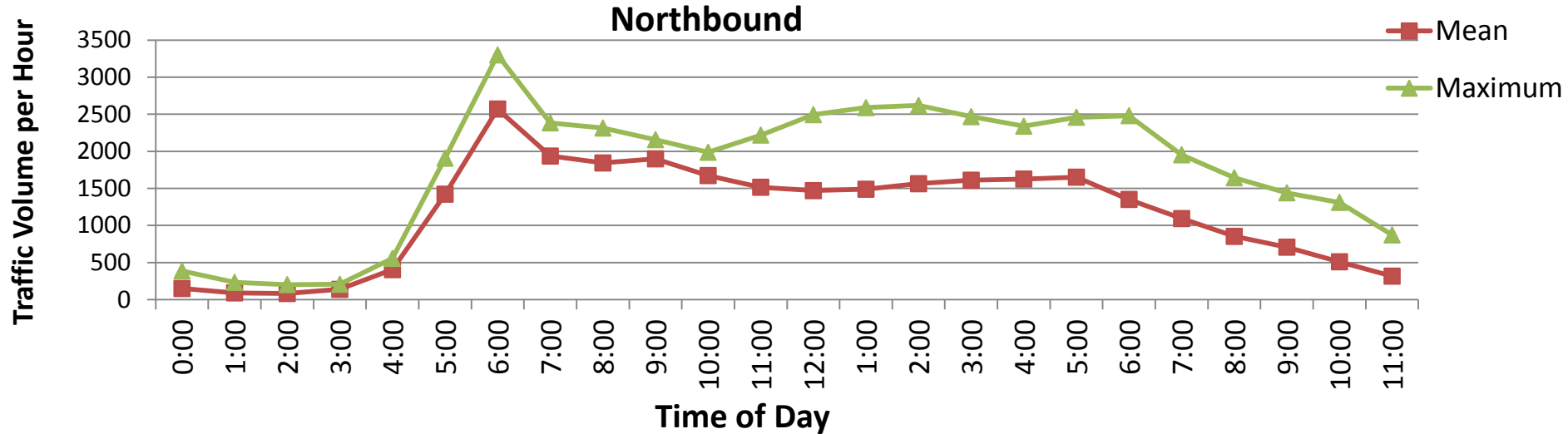
2015 Monthly Collision and Rainfall Data



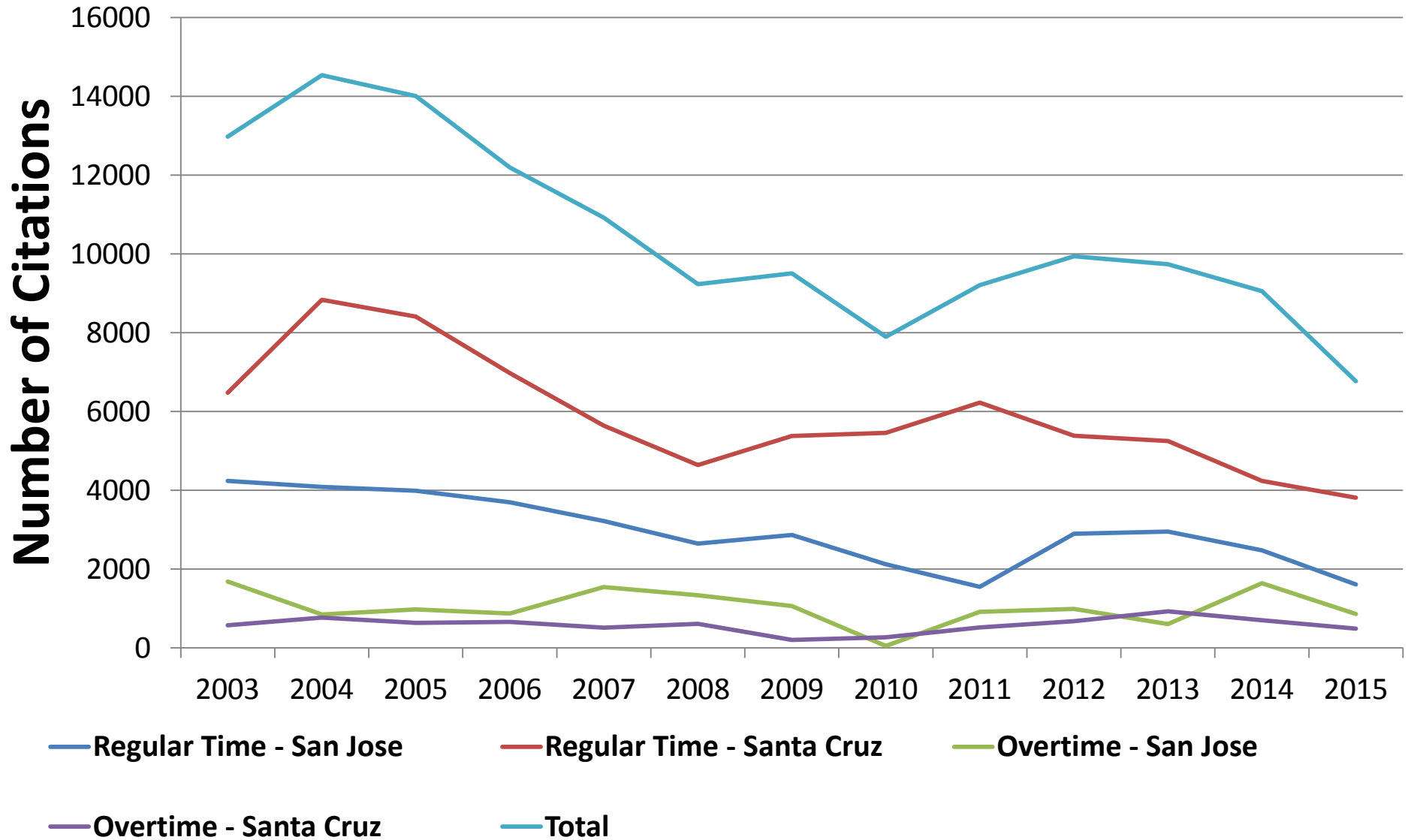
—■— Injury and Fatal	8	16	17	14	17	13	17	9	19	13	15	29
—◆— Rainfall	0	2.85	0.51	1.98	0.1	0.01	0.03	0.03	0.03	0.08	4.42	6.43

Hwy 17, Granite Creek – 2015

Average Weekday Traffic Volumes/Hour



Total Traffic Citations per Year



HOW MANY DISTRACTIONS ARE TOO MANY DISTRACTIONS?



DRINKING
COFFEE



USING A CELL
PHONE



TALKING WITH
PASSENGERS



READING A
NEWSPAPER



FINDING THE
RIGHT MUSIC



EATING



Verizon LTE 2:45 PM 19%

Messages Louise Freuh... Edit

Sure. I have to run a few errands but then id be up for some happy hour deals. Know of any new goods spots? Wanna invite the othes?

Aug 5, 2013, 2:45 PM Delivered:

What about Suie and Mike?

I think the Weren't th

T at of town g! Send

U I O P
C V
space

Highway 17 - Safe on 17 Task Force

