



APPENDIX F

Custom Crossing Treatments

Crossings are conceptual and subject to change based on landscape, topography, environmental constraints, design requirements, cost, etc.

CUSTOM CROSSING TREATMENTS

Twenty six (26) custom crossing treatments have been identified for the Coastal Rail Trail. Each custom treatment contains unique features not found in treatment types A-K in Section 5.3.2. Figures F-4 to F-30 represent the proposed custom treatments. Figures F-1 to F-3 illustrate the location of the crossings and the red dot symbols represent a custom crossing design.

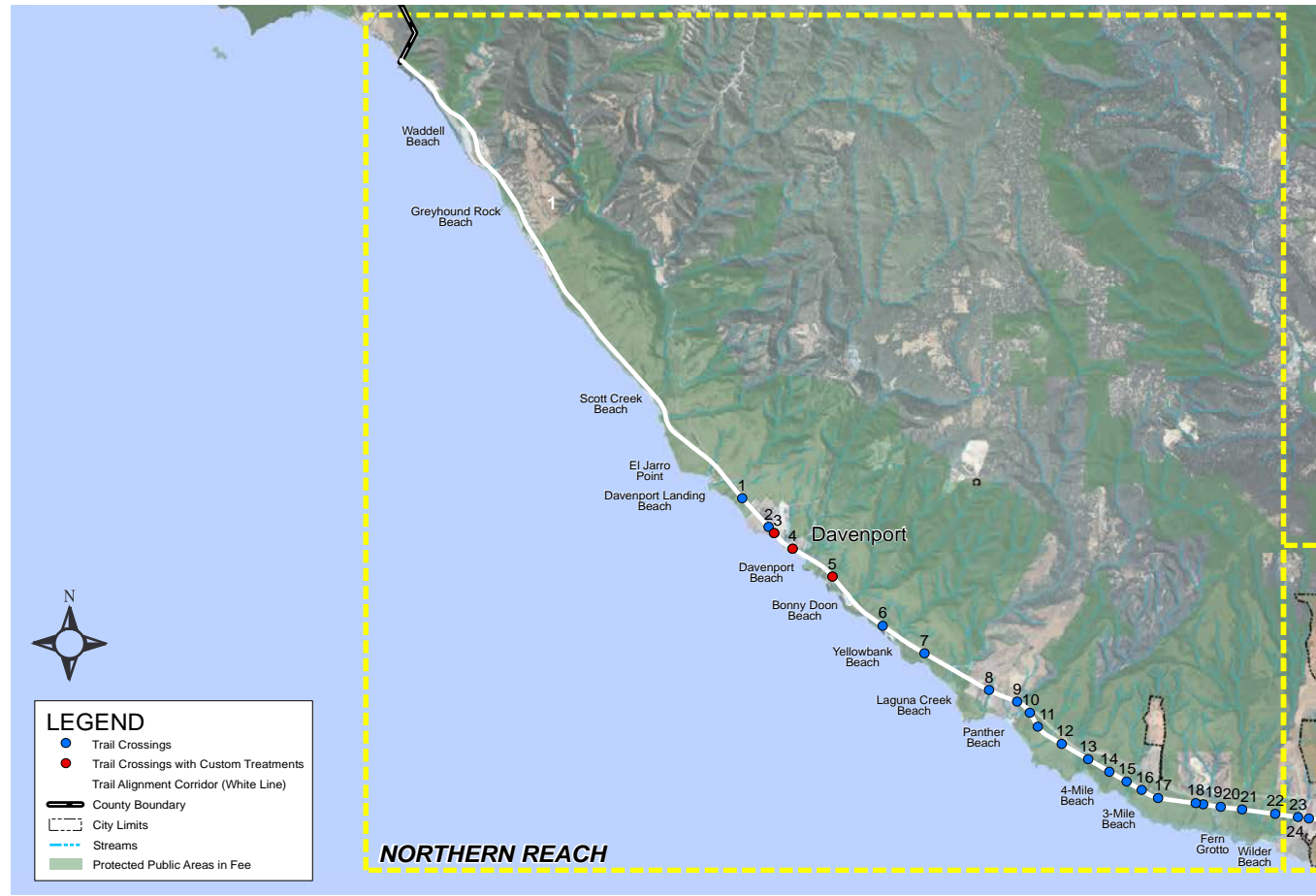


Figure F-1 Crossing treatments in the Northern Reach



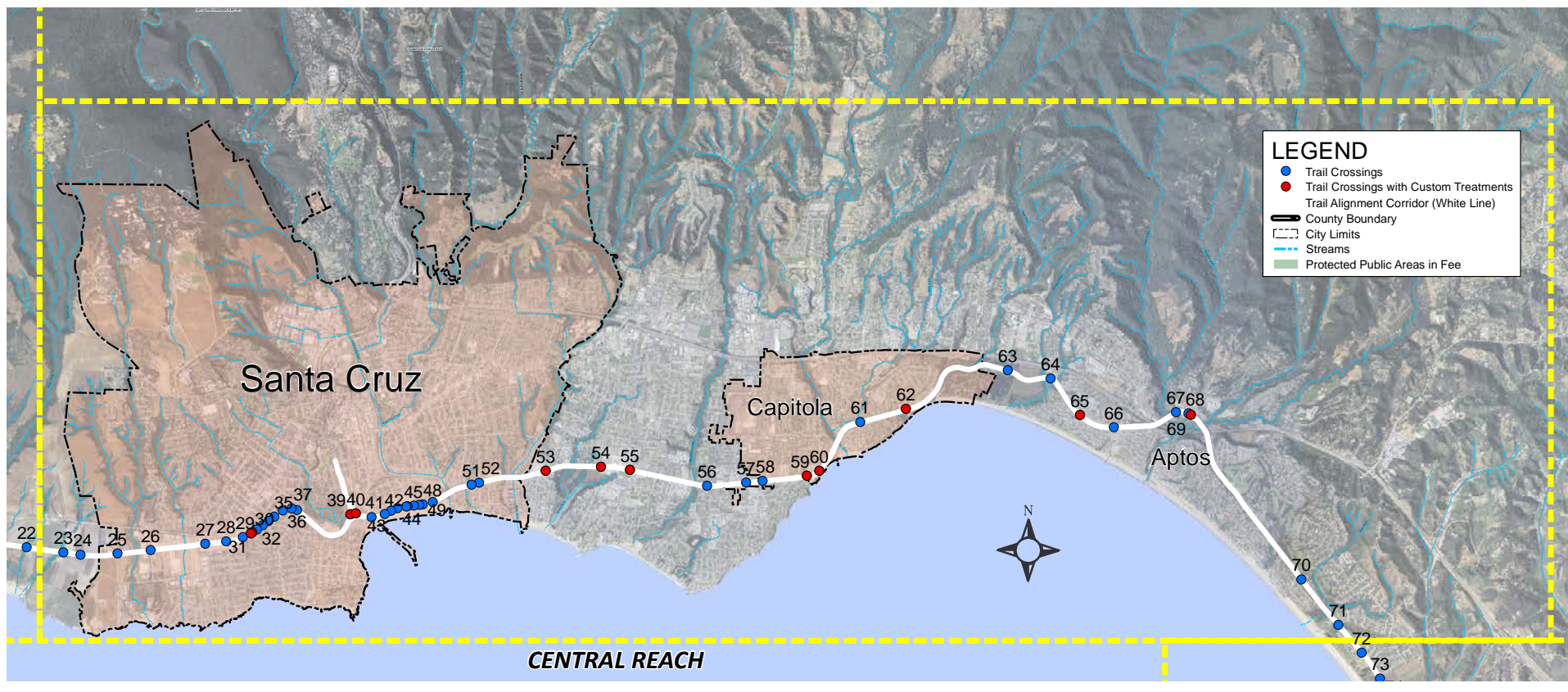


Figure F-2 Crossing Treatments in the Central Reach



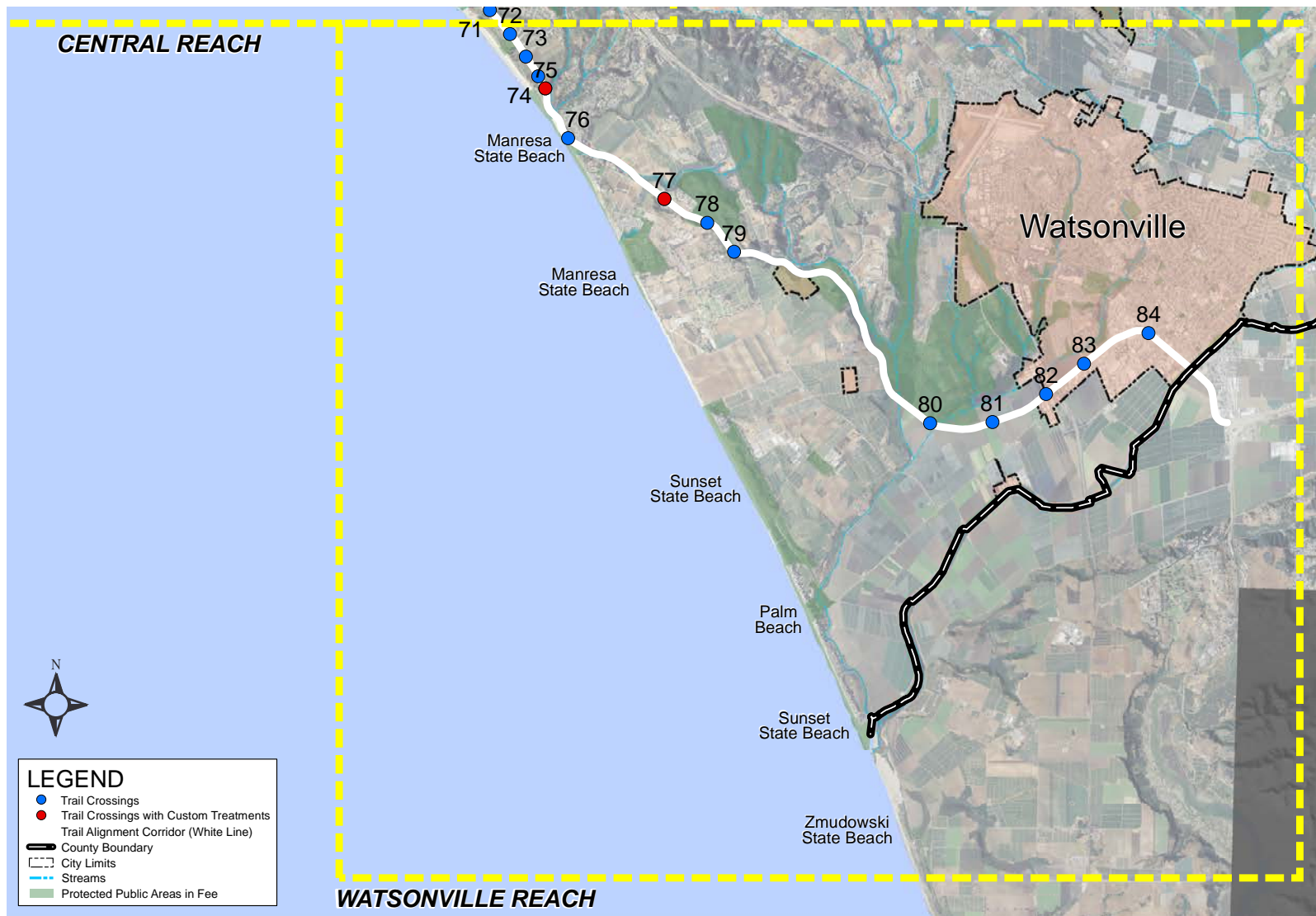


Figure F-3 Crossing treatments in the Watsonville Reach





Figure F-5 Crossing No. 4, Davenport Parking Lot

Figure prepared by W-Trans

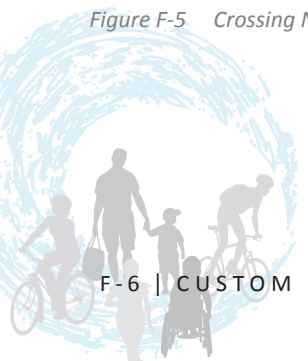




Figure F-6 Crossing No. 25, Shaffer Road

Figure prepared by W-Trans



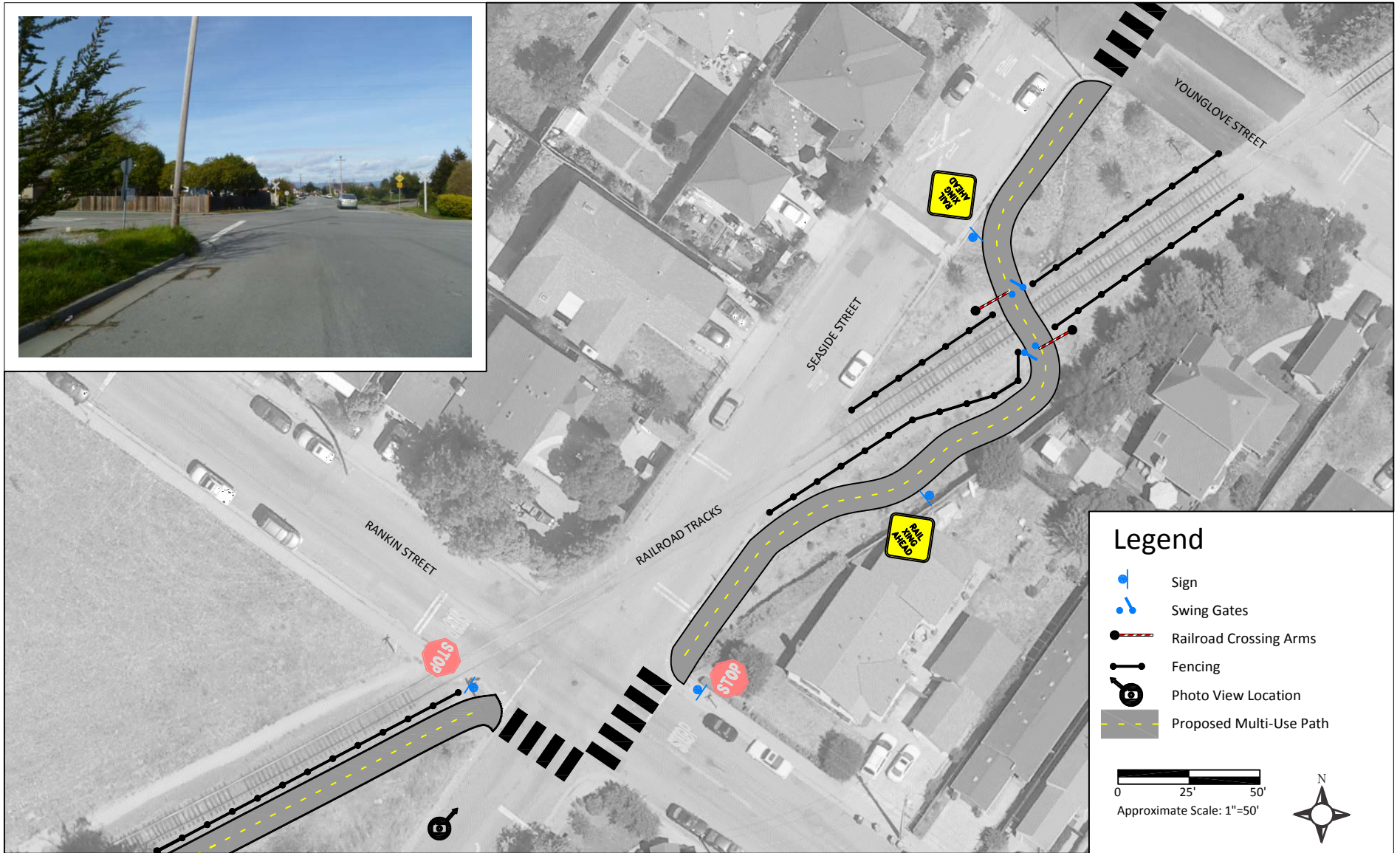


Figure F-7 Crossing No. 30-31, Seaside Street and Rankin Street

Figure prepared by W-Trans





Figure F-8 Crossing No. 32, Younglove Avenue

Figure prepared by W-Trans



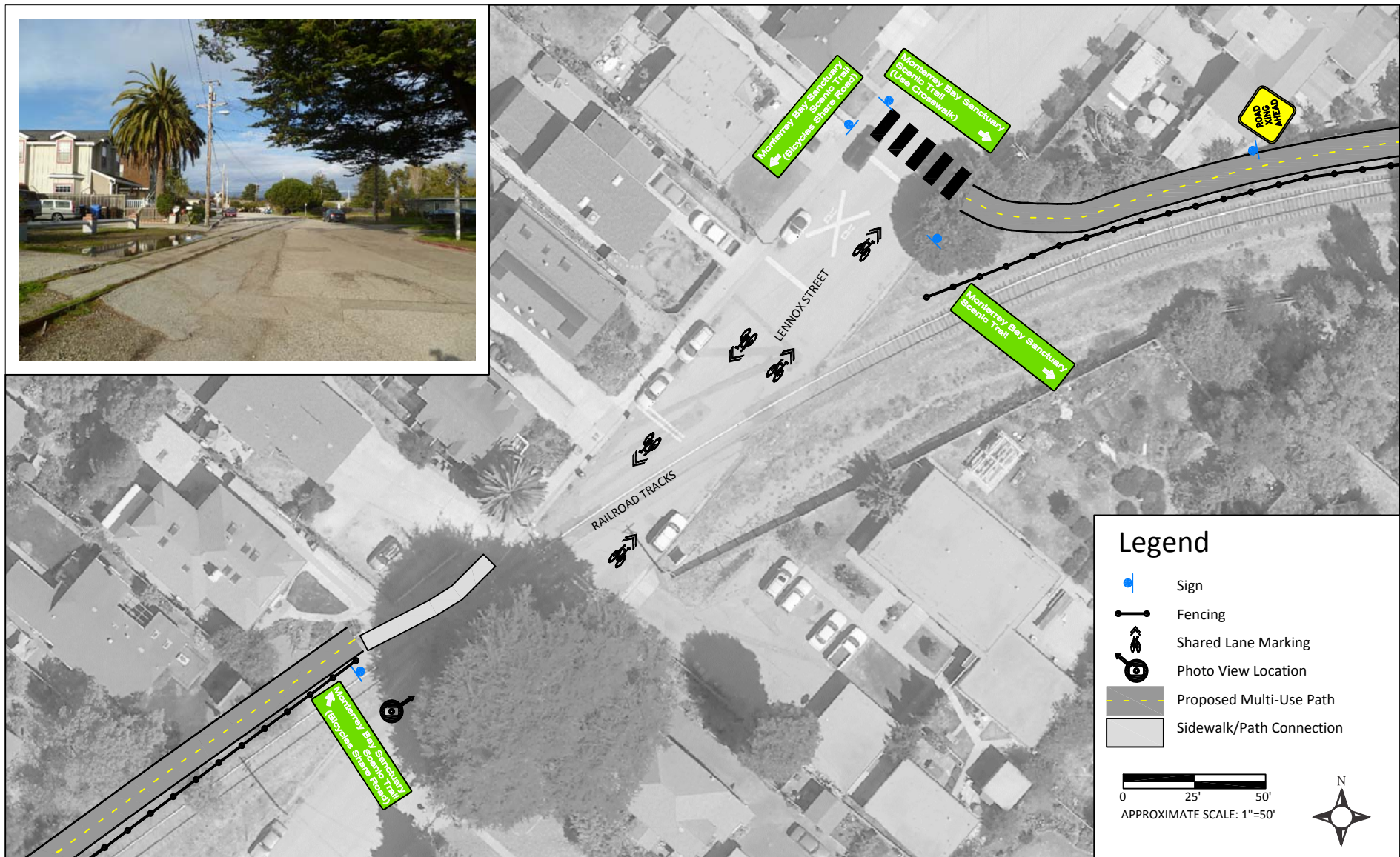


Figure F-9 Crossing No. 36, Lennox Street

Figure prepared by W-Trans



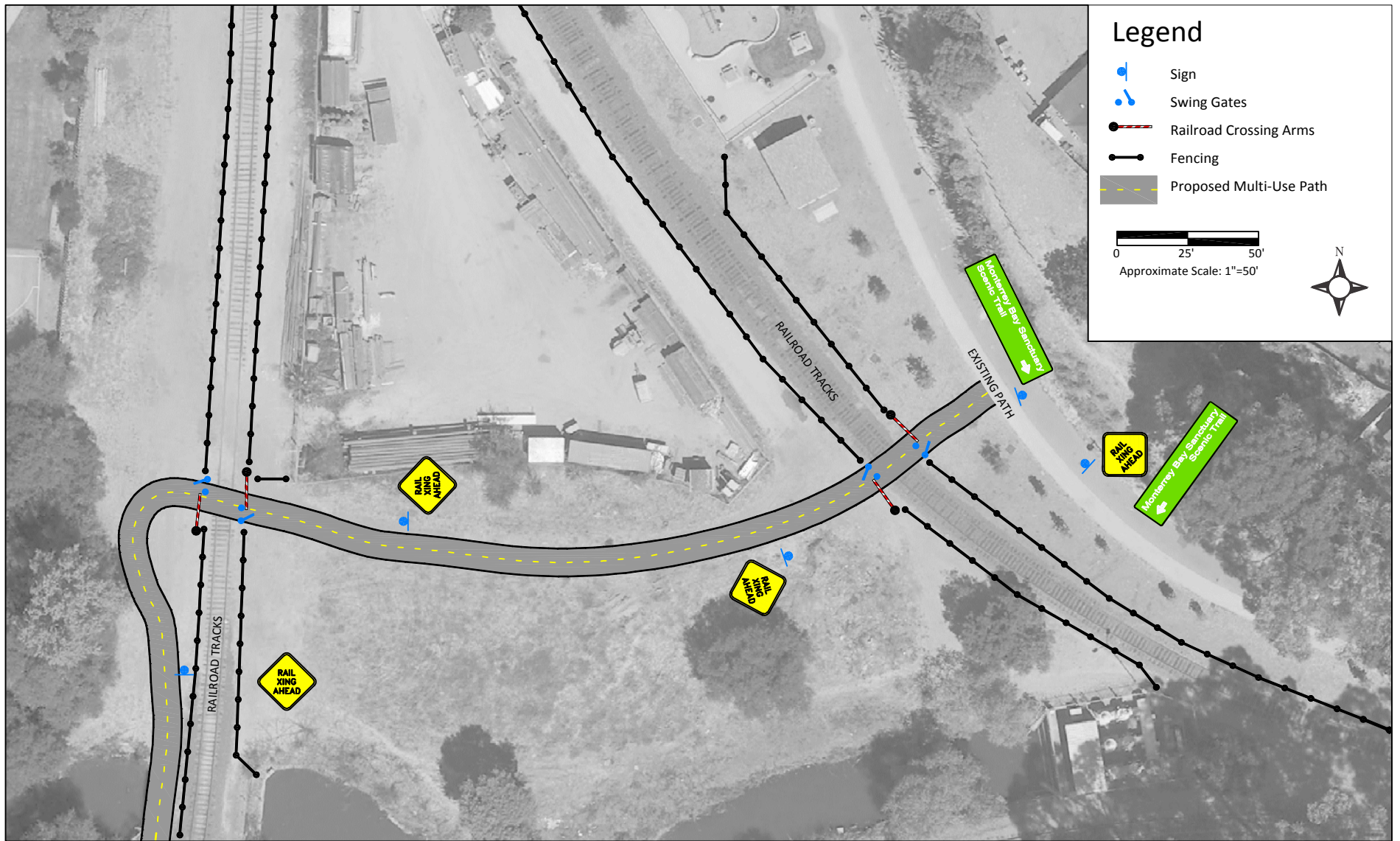
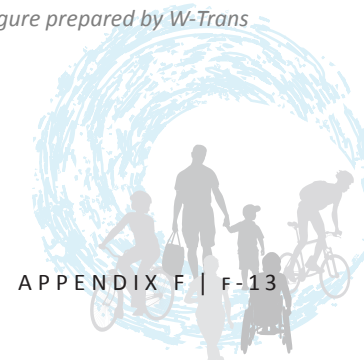


Figure F-12 Crossing No. 39-40, Neary Lagoon Park

Figure prepared by W-Trans



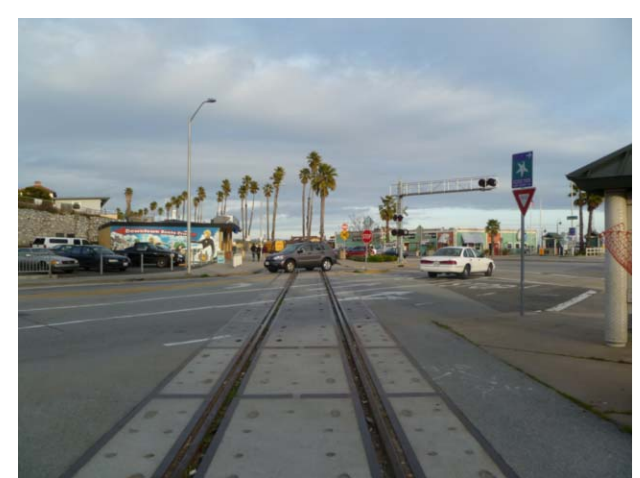
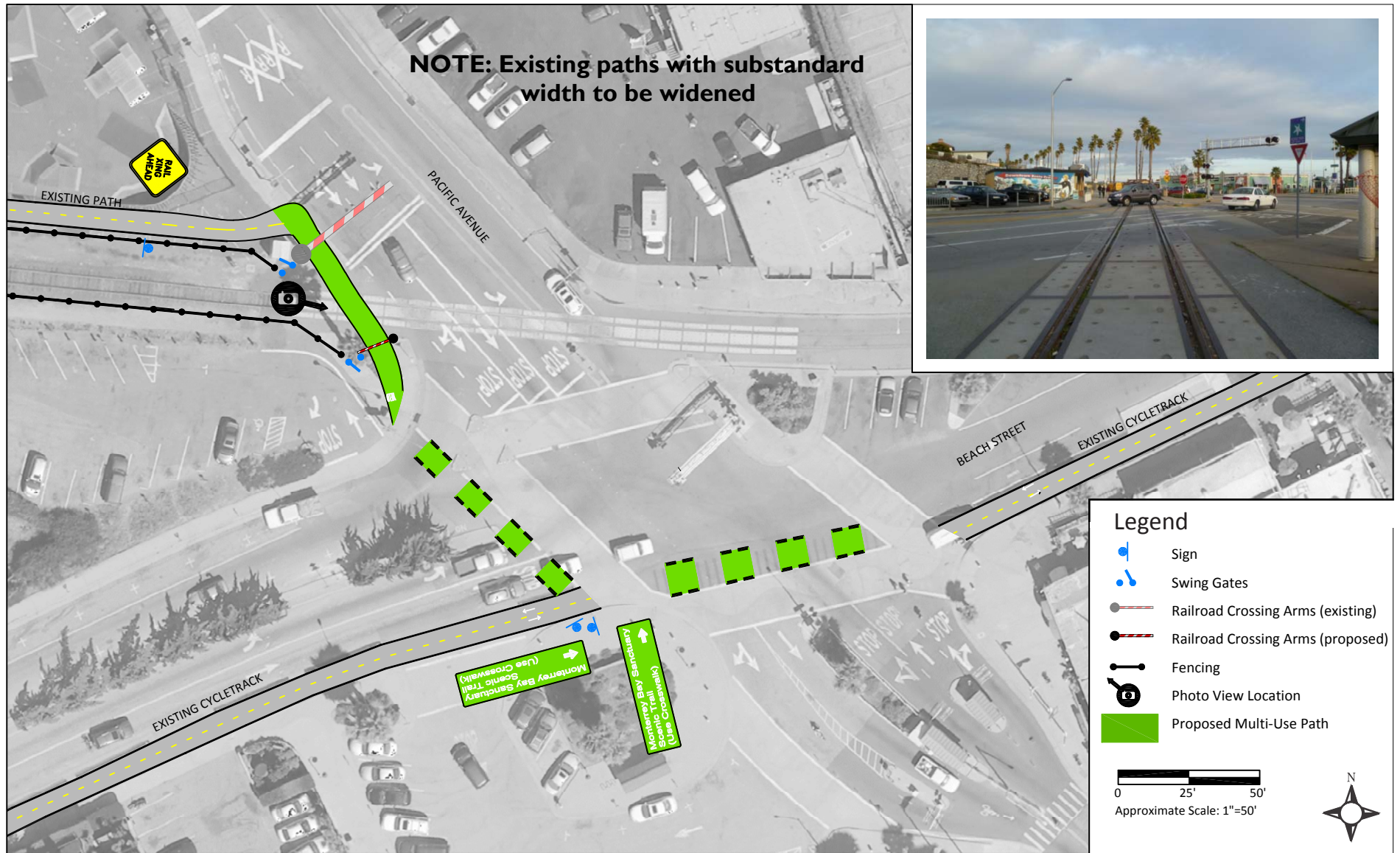


Figure F-13 Crossing No. 41, Pacific Avenue - No Roundabout Option

Figure prepared by W-Trans



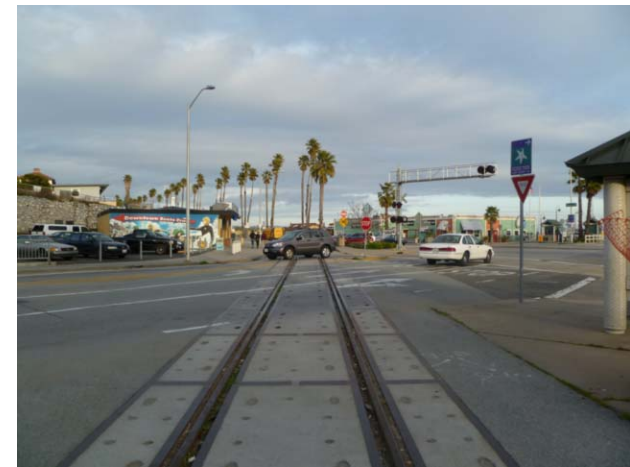
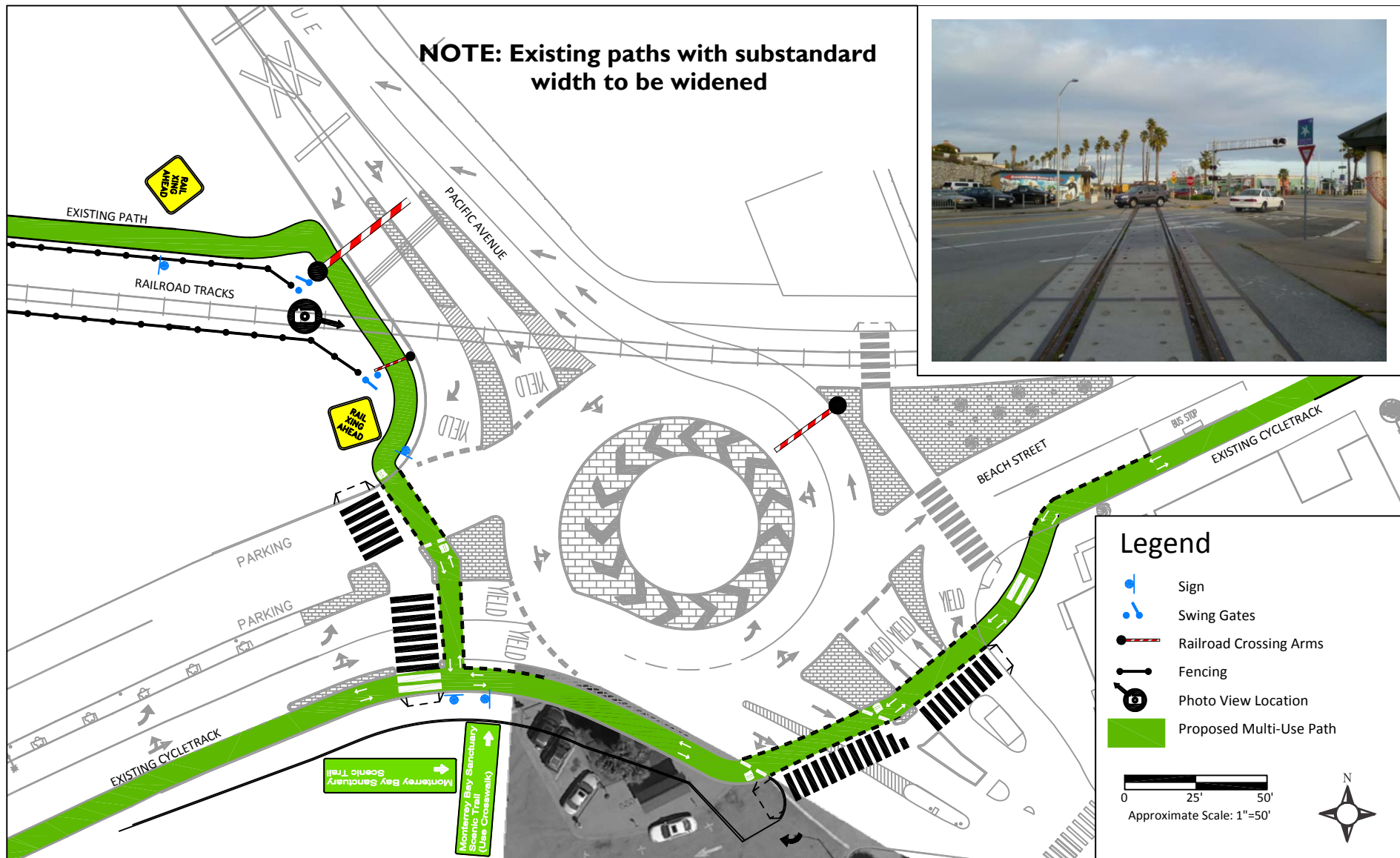


Figure F-14 Crossing No. 41, Pacific Avenue

Figure prepared by W-Trans

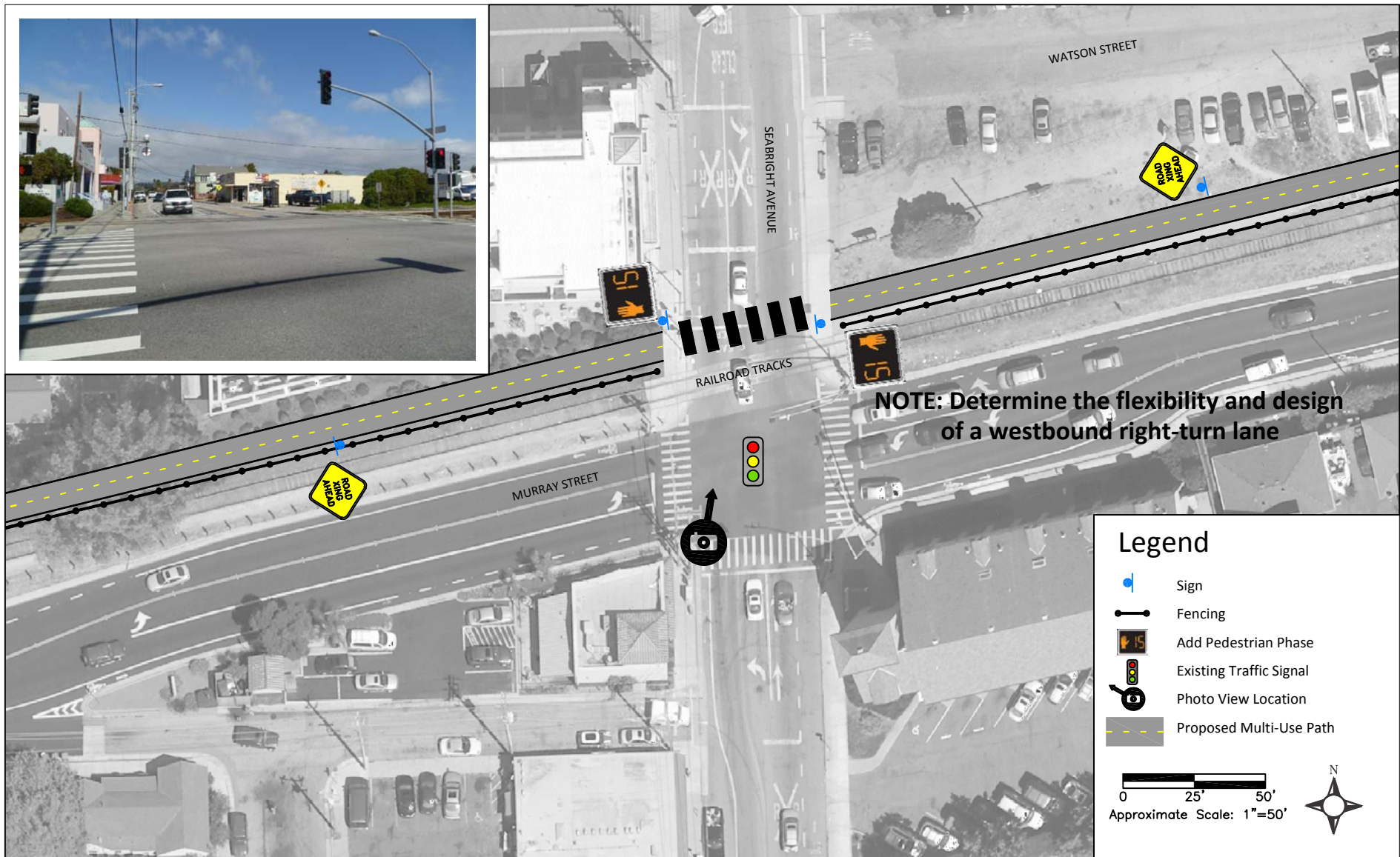


Figure F-15 Crossing No. 52, Seabright Avenue

Figure prepared by W-Trans





Figure F-16 Crossing No. 53, 7th Avenue

Figure prepared by W-Trans

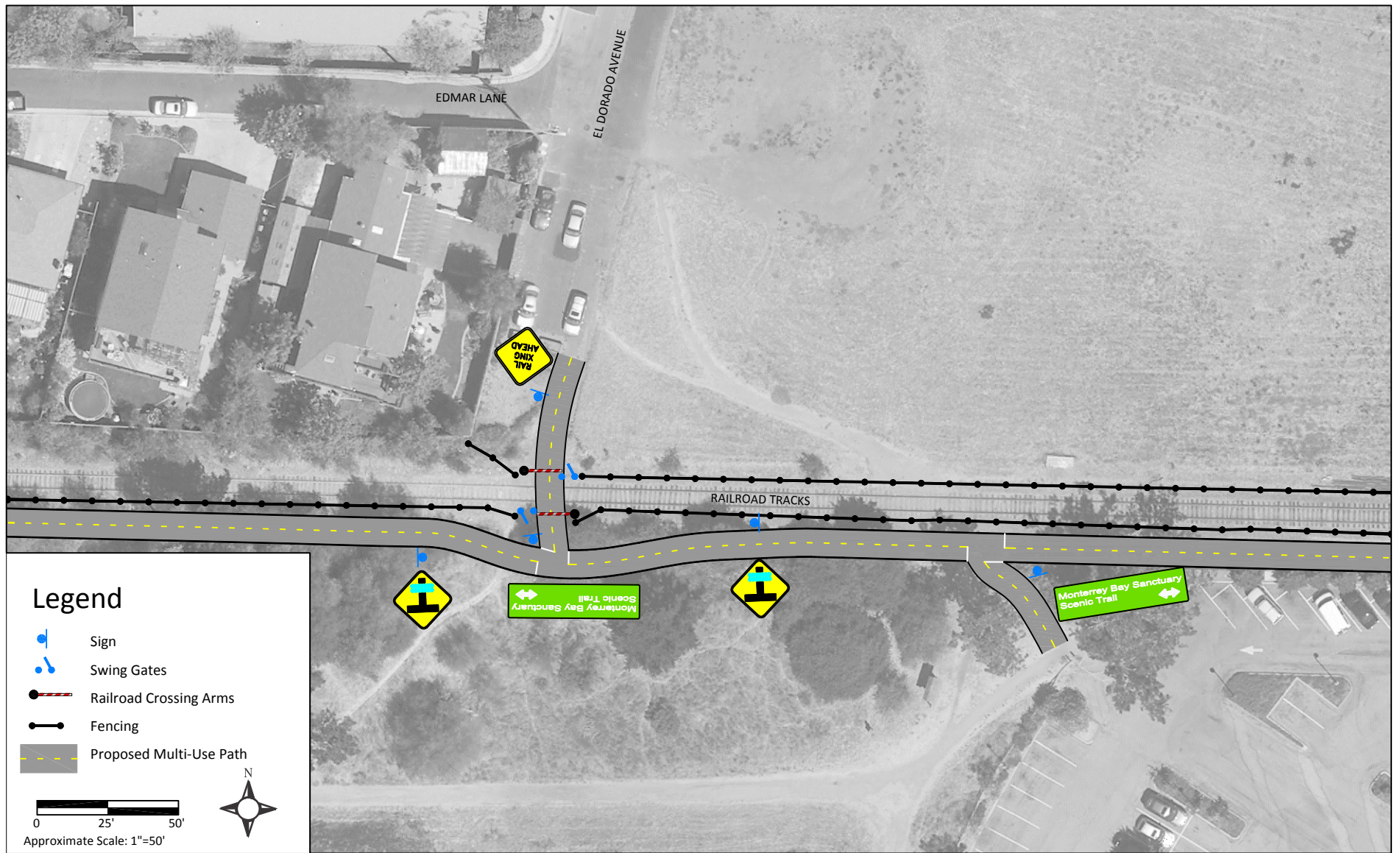


Figure F-17 Crossing No. 54, El Dorado Avenue/Simkins Swim Center

Figure prepared by W-Trans



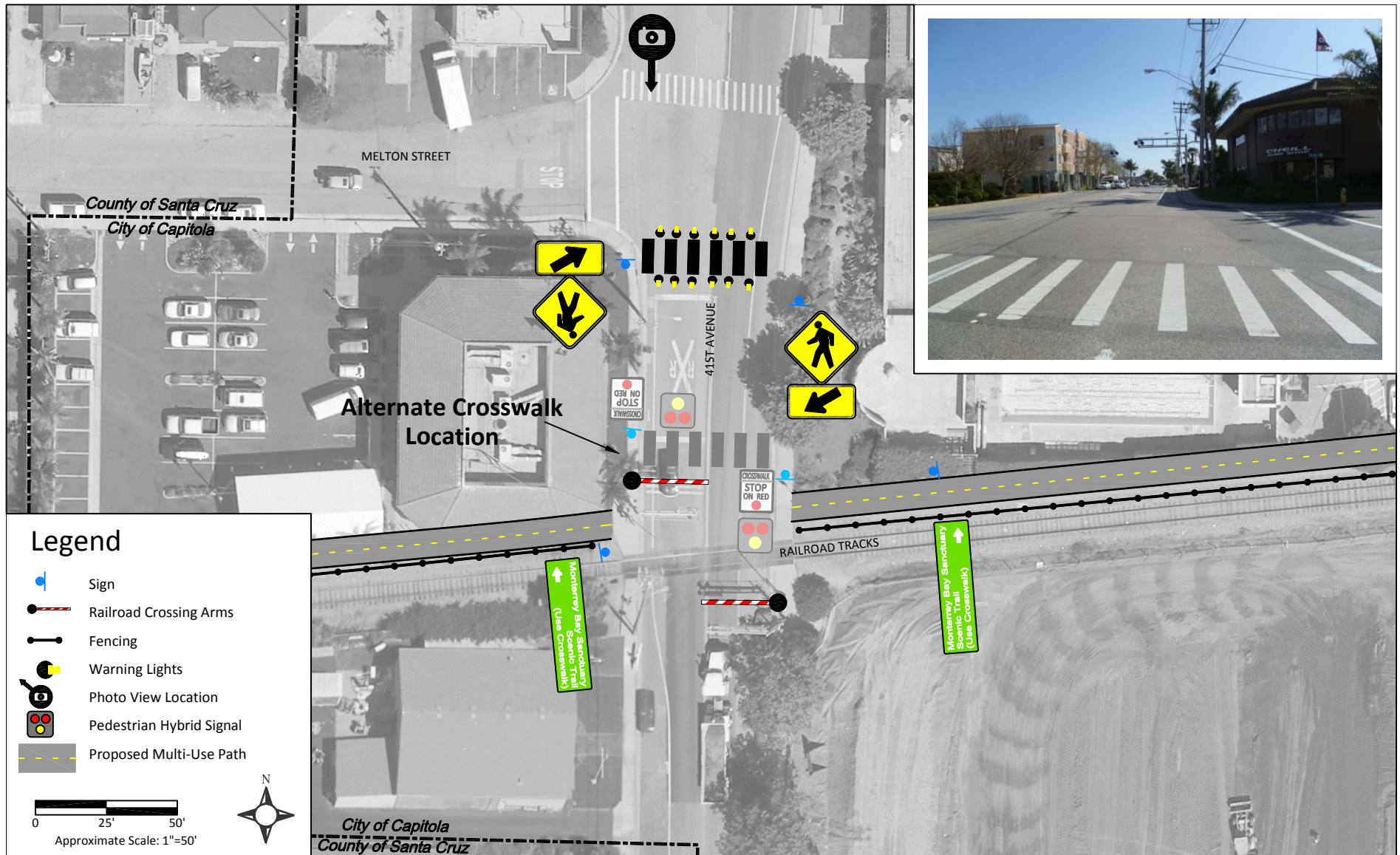


Figure F-19 Crossing No. 58, 41st Avenue

Figure prepared by W-Trans



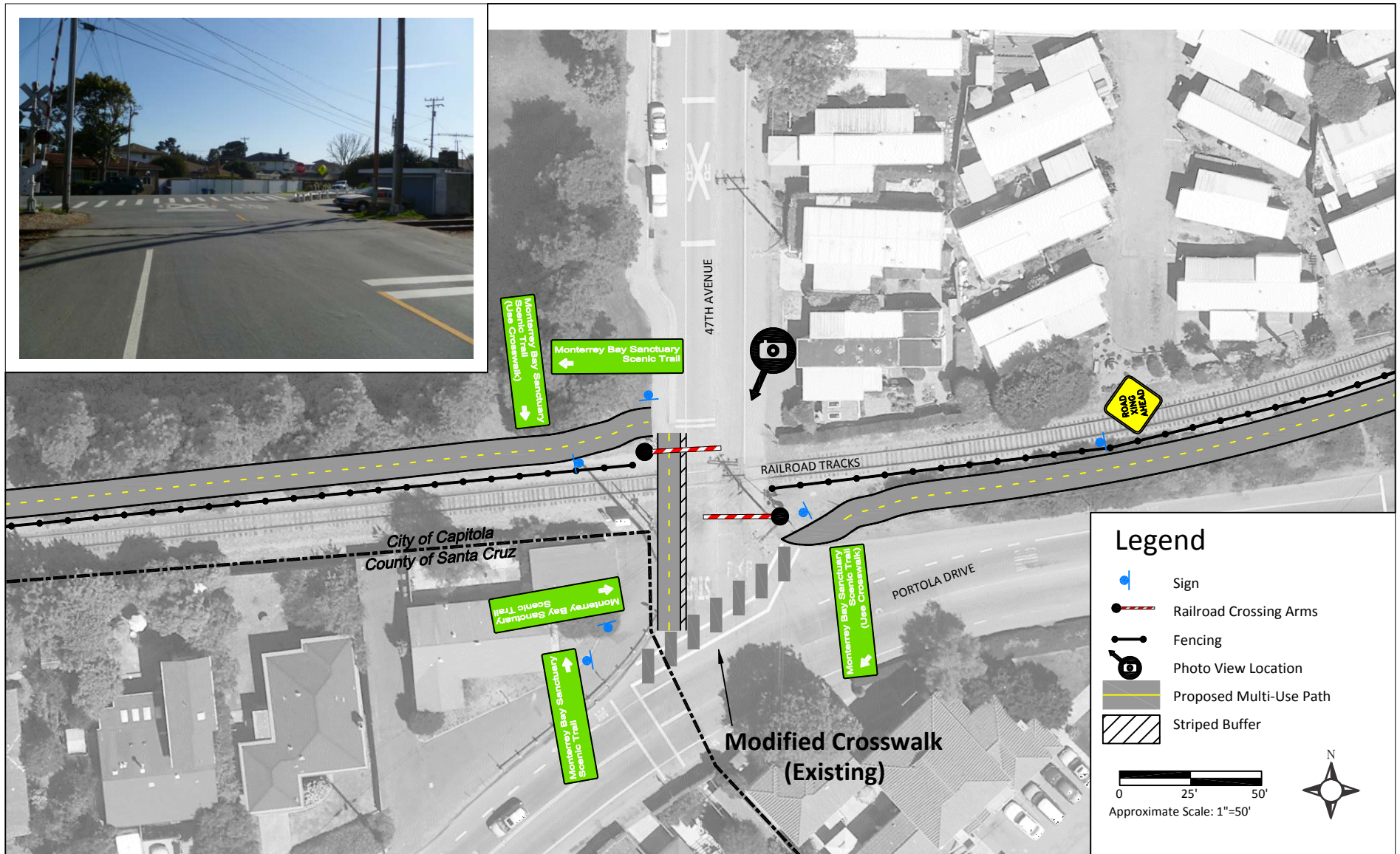
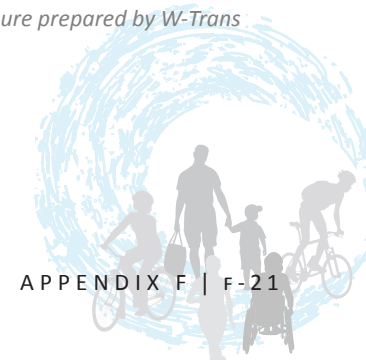


Figure F-20 Crossing No. 59, 47th Avenue

Figure prepared by W-Trans



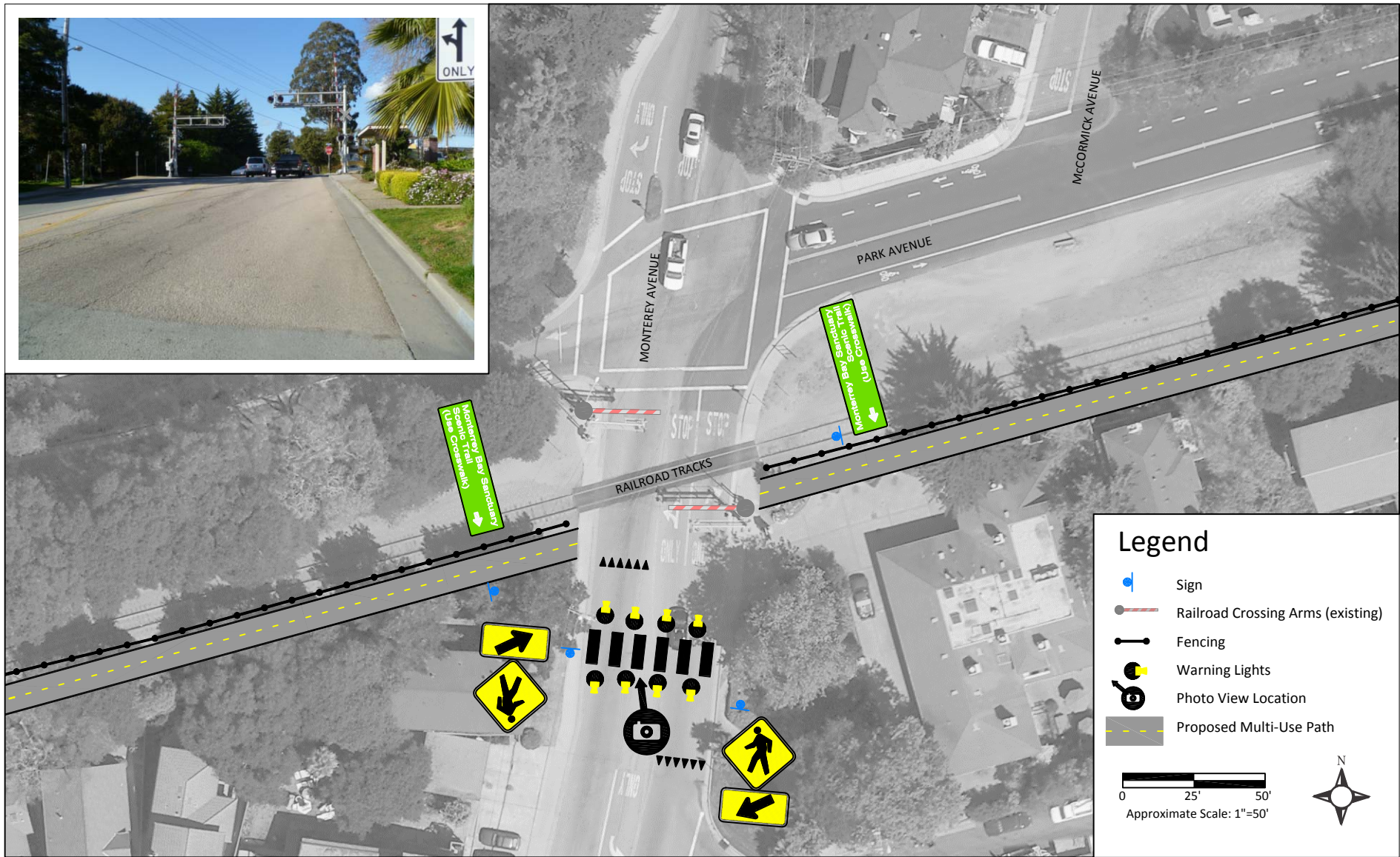


Figure F-22 Crossing No. 61, Monterey Avenue

Figure prepared by W-Trans

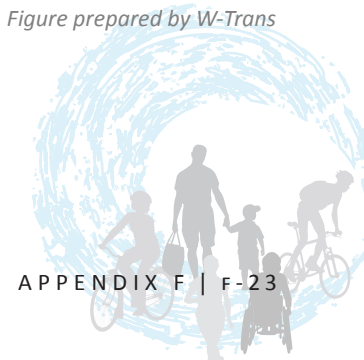




Figure F-23 Crossing No. 62, Grove Lane

Figure prepared by W-Trans



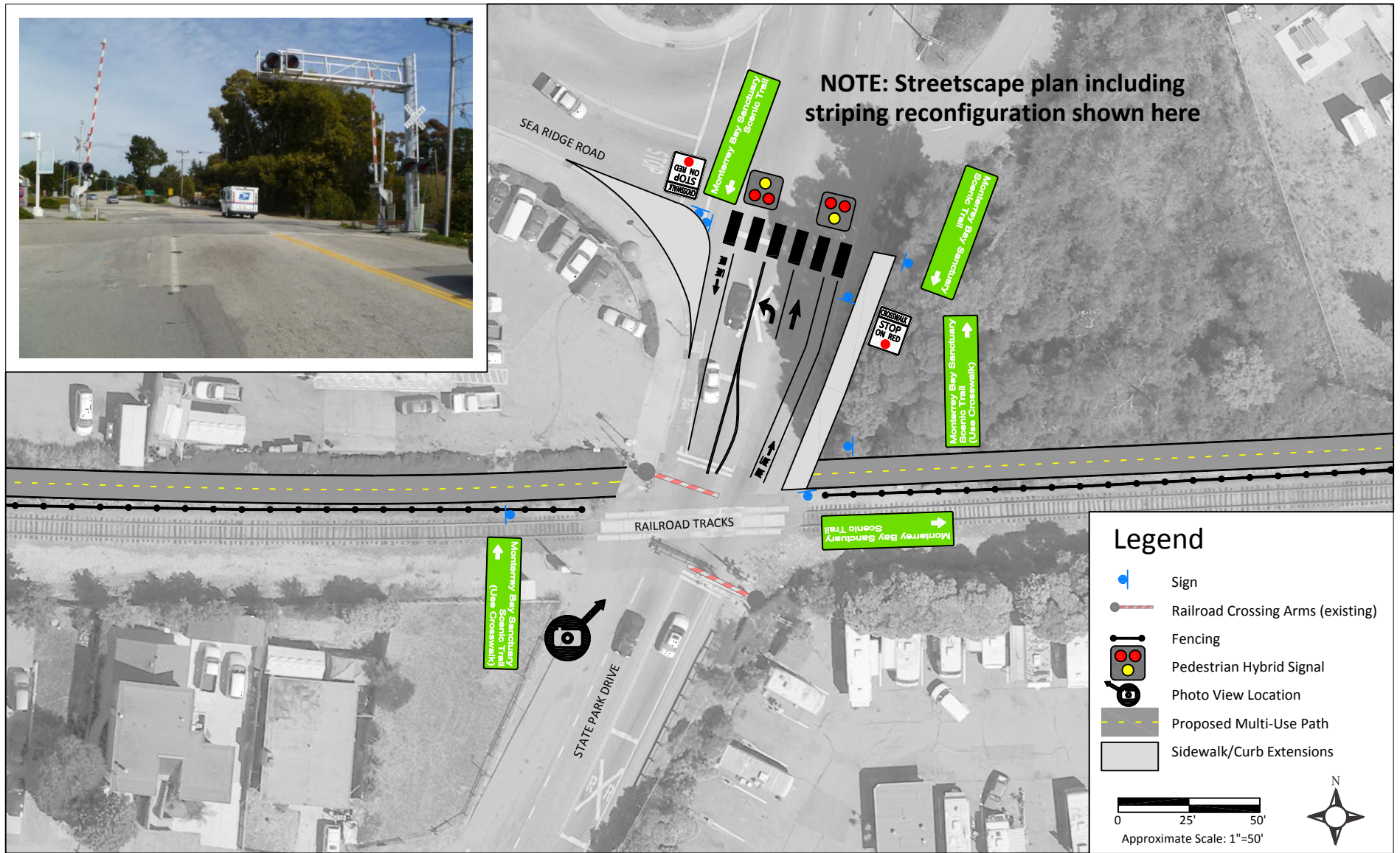


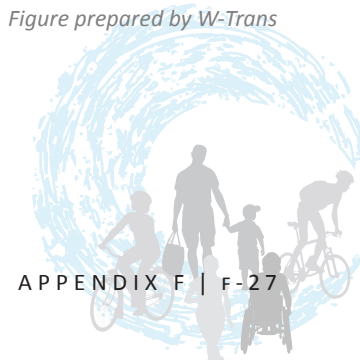
Figure F-25 Crossing No. 66, State Park Drive

Figure prepared by W-Trans



Figure F-26 Crossing No. 67, Aptos Creek Road

Figure prepared by W-Trans



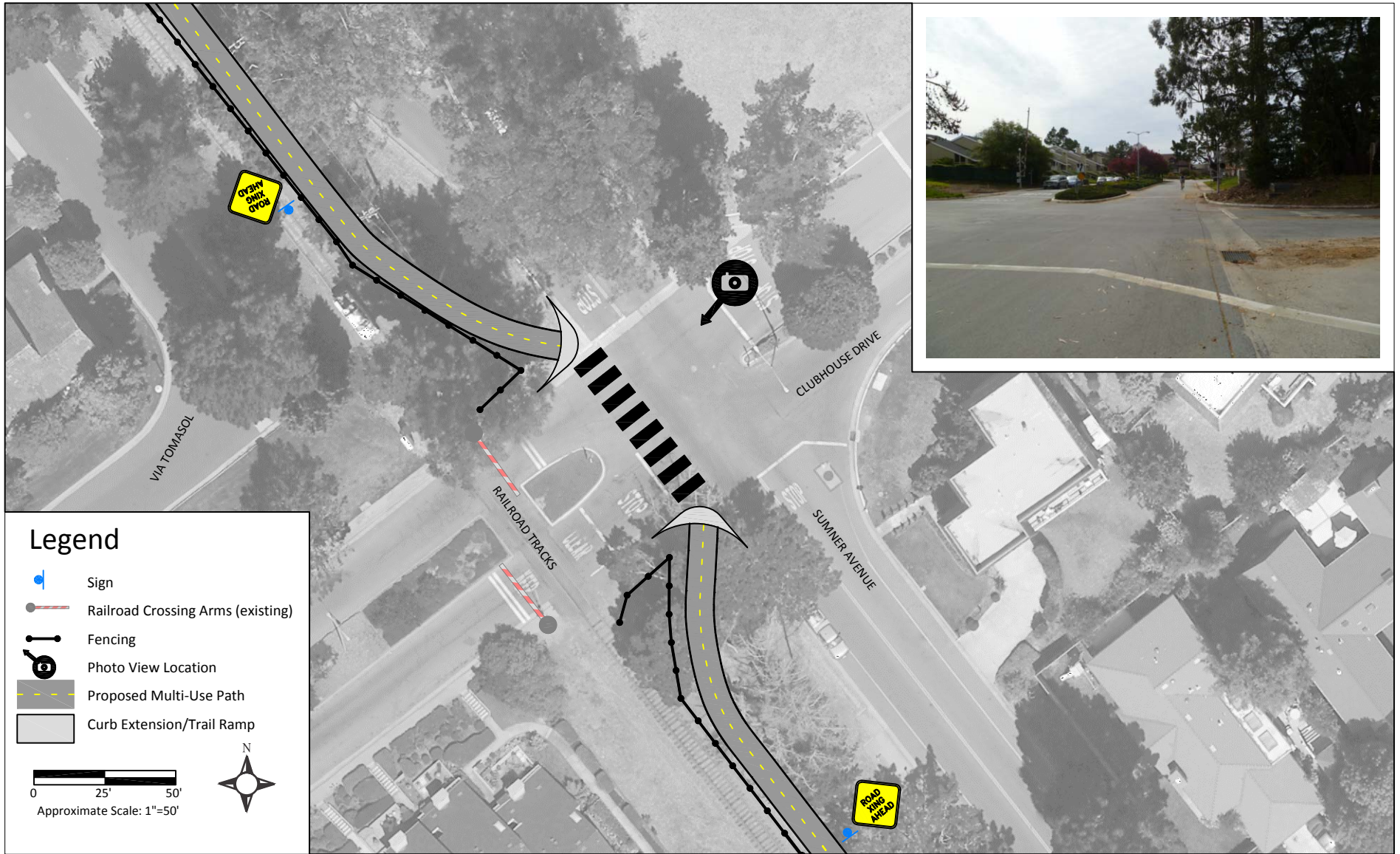
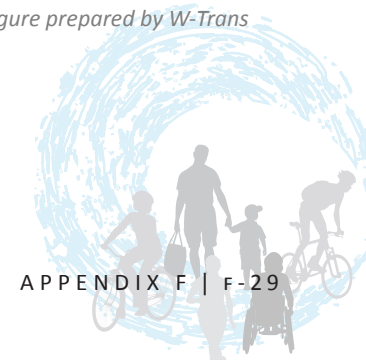


Figure F-28 Crossing No. 70, Clubhouse Drive

Figure prepared by W-Trans



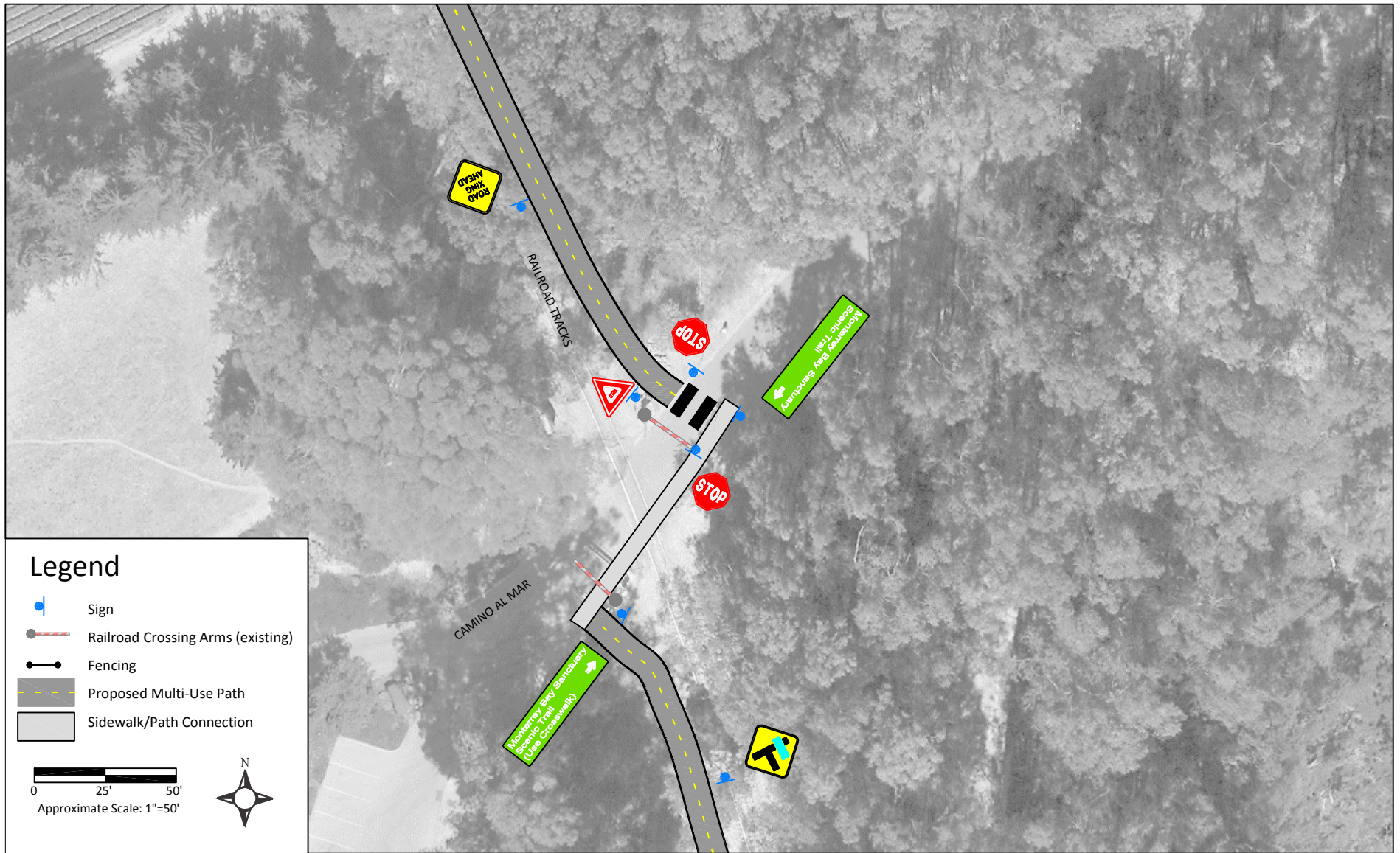


Figure F-29 Crossing No. 75, Camino Al Mar

Figure prepared by W-Trans



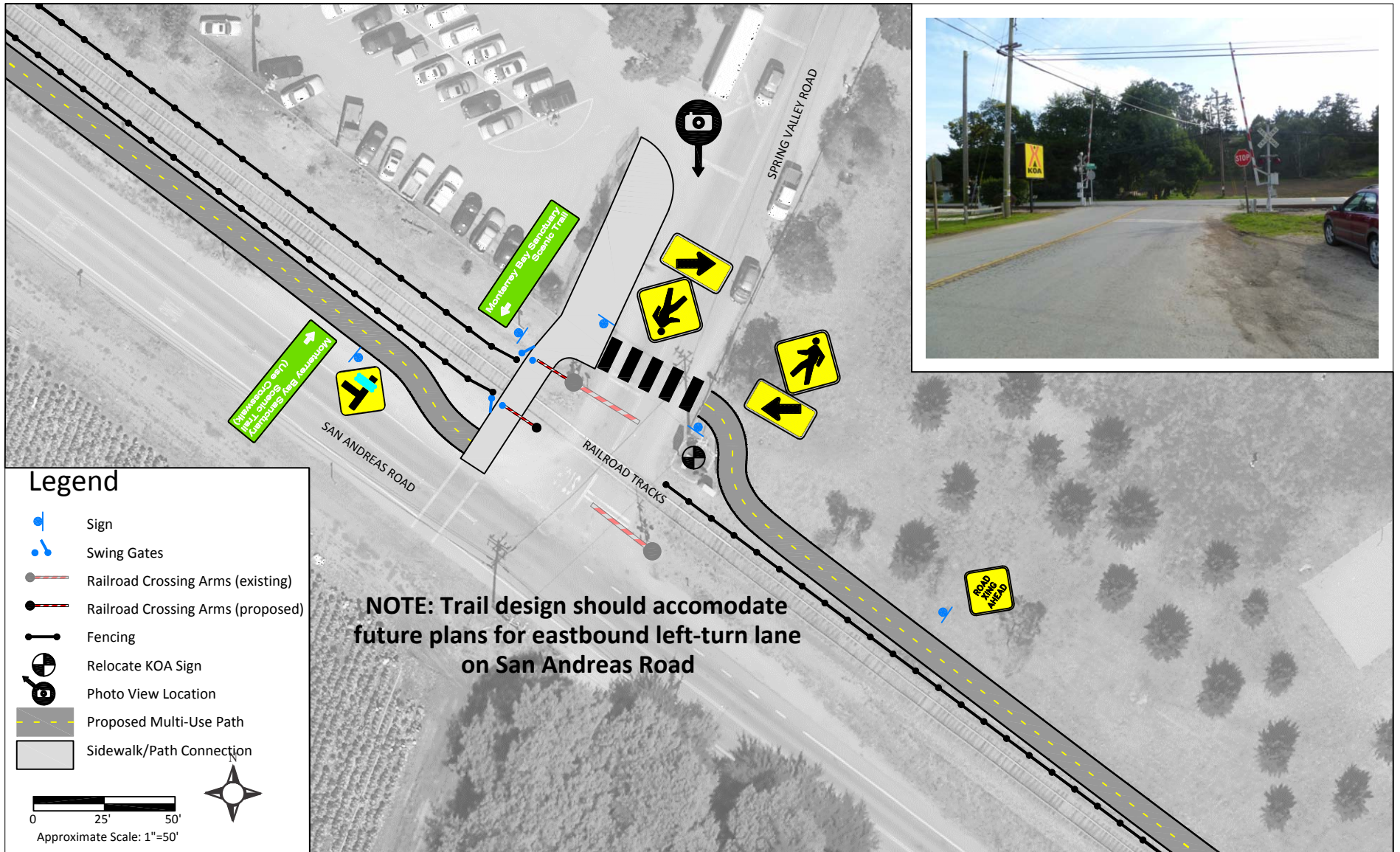
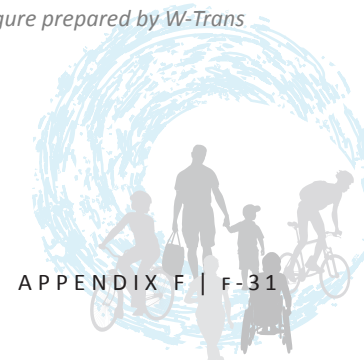


Figure F-30 Crossing No. 77, Spring Valley Road

Figure prepared by W-Trans





Natural Bridges State Beach

