

Appendix G

Santa Cruz Branch Line Track Charts

ROSEVILLE DIVISION SANTA CRUZ INDUSTRIAL LEAD

FILE PAGE
LAST REVISED
JANUARY 13, 2004
BRIDGES UPDATED
OCTOBER 8, 2003
ROAD XING UPDATED
MARCH 27, 2000

- YARD LIMIT
- ABSOLUTE SIG.
 - AEI DETECTOR
 - CRACKED WHEEL INDICATOR
 - DRAG, EOPT, DET.
 - HOT BOX DET.
 - HIGH WIDE
 - SHIFTED LOAD DET.
 - HIGH WATER DET.
 - IMPACT DETECTOR
 - INT. SIG. & NO.
 - TEMP-WIND GAGE
 - POWER SW.
 - SPRING SW.
 - DEPOT SYMBOL
 - HISTORICAL MARKER
 - TOPOGRAPHY
 - ELEV. TOP OF RAIL
 - AT STATION M.P.
 - CONTROL POINTS B
 - STATION NAMES
 - CIRCULAR 7 NUMBER
 - FILE FOR LOCATION
 - LGTH (CLEAR) OF SIDING

CONSTRUCTED BY COAST LINE RY - 1906
SOUTHERN PACIFIC RAILROAD ACQUIRED BY UNION PACIFIC
STB FINANCE DOC #32160 EFFECTIVE SEPTEMBER 11, 1996

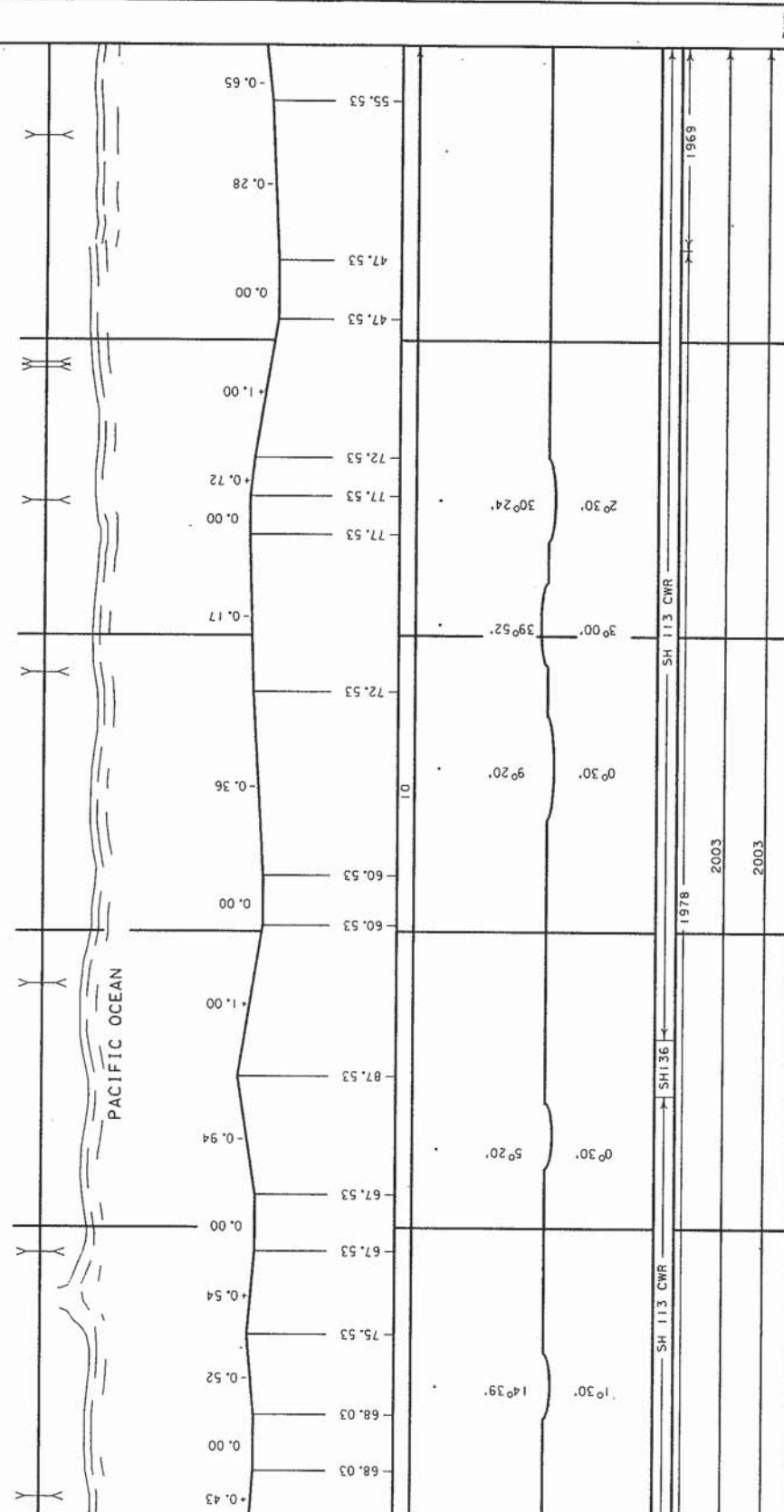
* CONSTRUCTED BY COAST LINE RY - 1905

303

DAVENPORT
DTC
BLOCK

25

25.31 I-SAC-11'X10'
26.08 I-SAC-9'X7'
26.09 I-TSTOD-9'
26.55 I-TSTOD-10'
27.13 I-SAC-15'X12'
28.18 I-SAC-12'X12'
29.09 I-SAC-9'X7'
29.91 I-CAC-6'X8'



GRADE XING DATA
ACBUCK
FLASHER
GATES
TRAFFIC SIGNAL
STOP SIGN
CANTILEVER

ROSEVILLE DIVISION SANTA CRUZ INDUSTRIAL LEAD

303A

CONSTRUCTED BY COAST LINE RY - 1905
SOUTHERN PACIFIC RAILROAD ACQUIRED BY UNION PACIFIC-STB FINANCE DOC #32760 EFFECTIVE SEPTEMBER 11, 1996

L.C.
1969

FILE PAGE
LAST REVISED
JANUARY 14, 2004
BRIDGES UPDATED
OCTOBER 8, 2003
ROAD KING UPDATED
MARCH 5, 2001

25

- YARD LIMIT
- ABSOLUTE SIG.
- AE1 DETECTOR
- CRACKED WHEEL INDICATOR
- DRAG. EOPT-DET.
- HOT BOX DET.
- HIGH WIDE
- SHIFTED LOAD DET.
- HIGH WATER DET.
- IMPACT DETECTOR
- INT. SIG. & NO.
- TEMP-WIND GAGE
- POWER-SW. SPRING-SW.
- DEPOT SYMBOL
- HISTORICAL MARKER

TOPOGRAPHY
ELEV. TOP OF RAIL
STATION M.P.
CONTROL POINTS &
STATION NAMES
CIRCULAR 7 NUMBER
MILE POST LOCATION
LCH (CLEAR) OF SIDING

MAX. GRADE PERCENT
(SUB GRADE)

SLIDE WARNING
EL. ABOVE SEA LEVEL
FIBER OPTICS
C.T.C.
A.B.S.
SPEED ALLOWANCE
AUTH. SUPER ELEV.

TOTAL ANGLE
ALIGNMENT &
FLANGE LUBRICATORS

DEGREE OF CURVE
RAIL SIDING

RAIL MAIN
SURFACING & LINING
SIDING
TIE GANG
STAGING
MAIN

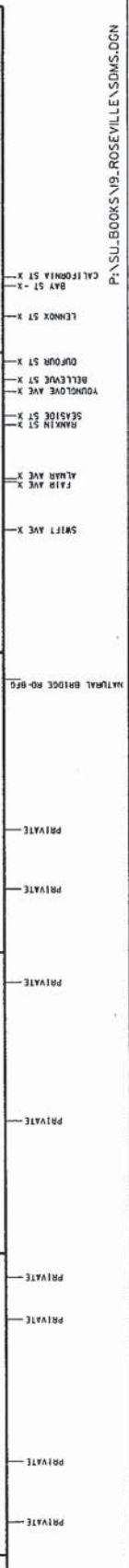
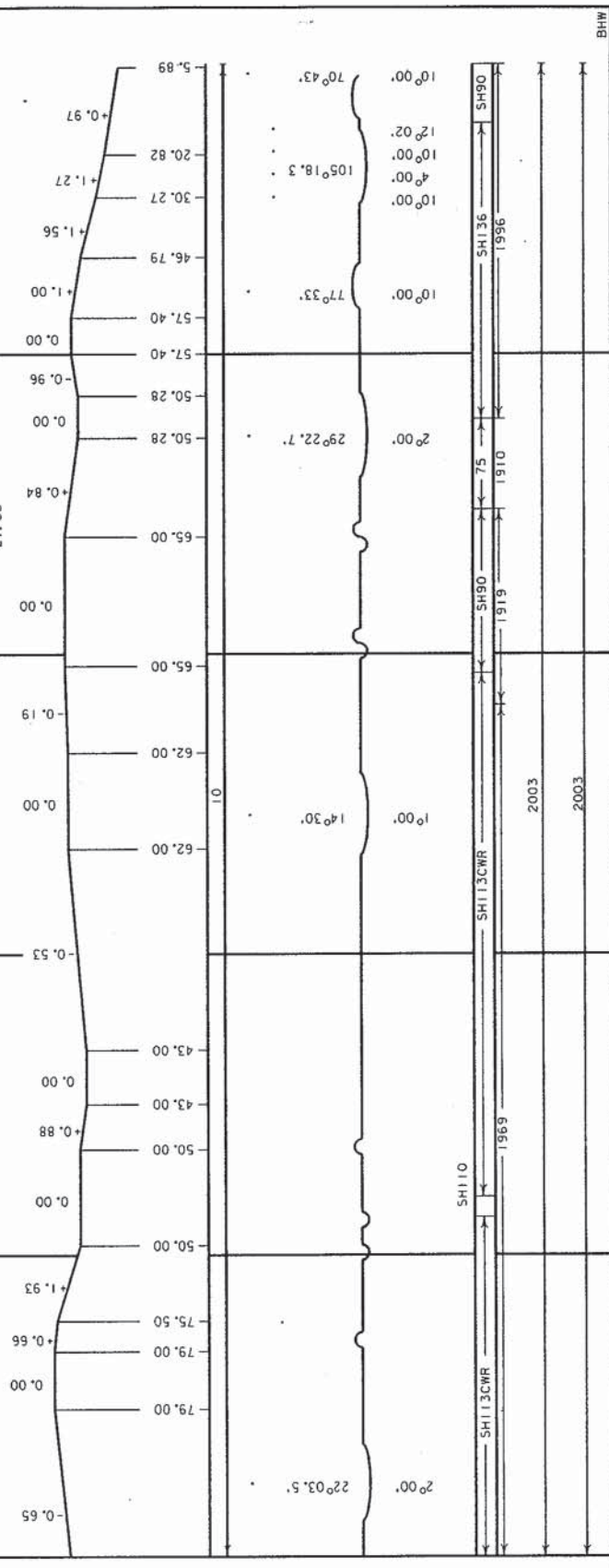
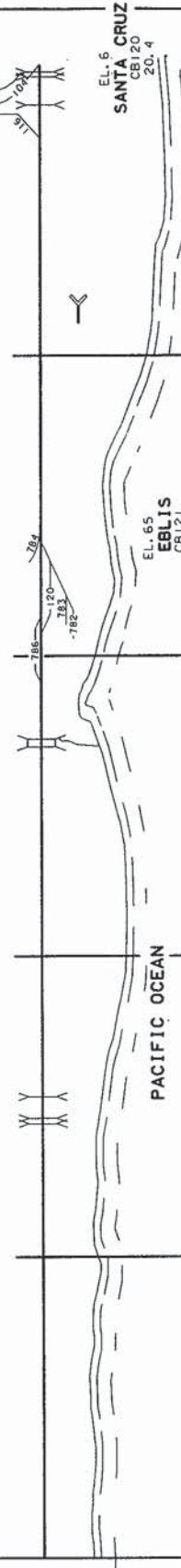
GRADE KING DATA
SIGNAL
STOP SIGN
CANTILEVER

20.32 2-CBC-5.5'X40'
20.22 1-CBC-4.3'X40'
20.04 PS#10 10
ROADING CAMP R.R.

20.69 YARD LIMIT

22.29 22-TSTOD-330'
"WRIGLEYS"

23.47 1-TSTOD-15'
23.54 1-TSTOD-16'
23.55 1-SAC-10'XB'



ROSEVILLE DIVISION SANTA CRUZ INDUSTRIAL LEAD

305

CONSTRUCTED BY SANTA CRUZ RR - 1876
SOUTHERN PACIFIC RAILROAD ACQUIRED BY UNION PACIFIC-STB FINANCE DOC #32760 EFFECTIVE SEPTEMBER 11, 1996

10

10

10

10

10

10

10

10

10

10

10

10

10

10

10

10

10

10

10

10

10

10

10

10

10

10

10

10

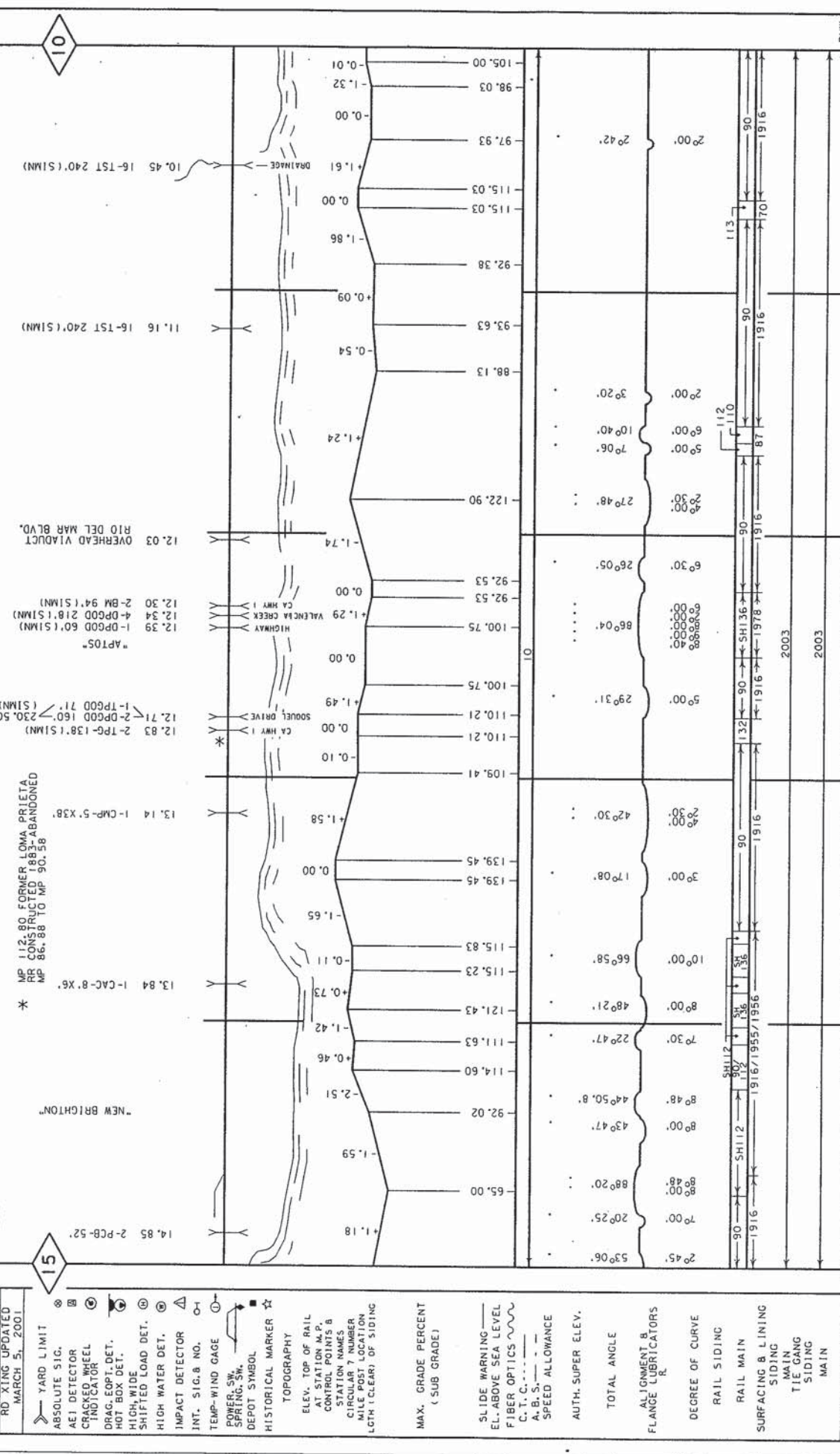
10

10

10

10

10



STATION	TRACK ELEVATION	GROUND ELEVATION	REMARKS
10	53.06	70.00	
20	53.06	70.00	
30	53.06	70.00	
40	53.06	70.00	
50	53.06	70.00	
60	53.06	70.00	
70	53.06	70.00	
80	53.06	70.00	
90	53.06	70.00	
100	53.06	70.00	
110	53.06	70.00	
120	53.06	70.00	
130	53.06	70.00	
140	53.06	70.00	
150	53.06	70.00	
160	53.06	70.00	
170	53.06	70.00	
180	53.06	70.00	
190	53.06	70.00	
200	53.06	70.00	
210	53.06	70.00	
220	53.06	70.00	
230	53.06	70.00	
240	53.06	70.00	
250	53.06	70.00	
260	53.06	70.00	
270	53.06	70.00	
280	53.06	70.00	
290	53.06	70.00	
300	53.06	70.00	
305	53.06	70.00	

FILE PAGE
LAST REVISED
JANUARY 13, 2004
BRIDGES UPDATED
OCTOBER 8, 2003
RD XING UPDATED
MARCH 5, 2001

YARD LIMIT
ABSOLUTE SIG.
AE1 DETECTOR
CRACKED WHEEL
INDICATOR
DRAG. EOPT. DET.
HOT BOX DET.
HIGH, WIDE
SHIFTED LOAD DET.
HIGH WATER DET.
IMPACT DETECTOR
INT. SIG. & NO.
TEMP. WIND GAGE
POWER, SW.
SPRING, SW.
DEPOT SYMBOL
HISTORICAL MARKER
TOPOGRAPHY
ELEV. TOP OF RAIL
STATION M.P.
STATION NAMES
CIRCULAR T NUMBER
MILE POST LOCATION
LCHM (CLEAR) OF SIDING

MAX. GRADE PERCENT
(SUB GRADE)
SLIDE WARNING
EL. ABOVE SEA LEVEL
FIBER OPTICS
C.T.C. ---
A.B.S. ---
SPEED ALLOWANCE
AUTH. SUPER ELEV.
TOTAL ANGLE
ALIGNMENT &
FLANGE LUBRICATORS
DEGREE OF CURVE
RAIL SIDING
RAIL MAIN
SURFACING & LINING
SIDING
TIE GANG
SIDING
MAIN

GRADE XING DATA
X-BUCK
X-FLASHER
X-PLASHER
X-SIGNAL
X-STOP SIGN
X-TRAFFIC SIGNAL
X-CANTILEVER

ROSEVILLE DIVISION SANTA CRUZ INDUSTRIAL LEAD

FILE PAGE
LAST REVISED
JANUARY 13, 2004
BRIDGES UPDATED
OCTOBER 8, 2003
RD XING UPDATED
MARCH 27, 2000

CONSTRUCTED BY SANTA CRUZ RR - 1877
SOUTHERN PACIFIC RAILROAD ACQUIRED BY UNION PACIFIC-STB FINANCE DOC #32760 EFFECTIVE SEPTEMBER 11, 1996

305A

YARD LIMIT

- ABSOLUTE SIG.
- AEI DETECTOR
- CRACKED WHEEL INDICATOR
- DRAG. EOPT. DET.
- HOT BOX DET.
- HIGH WIDE SHIFTED LOAD DET.
- HIGH WATER DET.
- IMPACT DETECTOR
- INT. SIG. & NO.
- TEMP-WIND GAGE
- POWER SW. SPRING SW.
- DEPOT SYMBOL
- HISTORICAL MARKER

TOPOGRAPHY
ELEV. TOP OF RAIL
STATION M.P.
CONTROL POINTS &
STATION NAMES
CIRCULAR 7 NUMBER
MILE POST LOCATION
LOTH (CLEAR) OF SIDING

MAX. GRADE PERCENT
(SUB GRADE)

SLIDE WARNING
EL. ABOVE SEA LEVEL
FIBER OPTICS
C. T. C. ---
A. B. S. ---
SPEED ALLOWANCE
AUTH. SUPER ELEV.

TOTAL ANGLE
ALIGNMENT & FLANGE LUBRICATORS

DEGREE OF CURVE

RAIL SIDING

RAIL MAIN

SURFACING & LINING

TELEPHONE

MAIN

SIDING

RAIL

8.17 15' PTOD

8.32 1-TST 15' (S1MN)

8.49 165' 00

8.64 1-TST 15' (S1MN)

8.64 1-TST 15' (S1MN)

8.64 1-TST 15' (S1MN)

8.64 1-TST 15' (S1MN)

8.64 1-TST 15' (S1MN)

8.64 1-TST 15' (S1MN)

8.64 1-TST 15' (S1MN)

8.64 1-TST 15' (S1MN)

8.64 1-TST 15' (S1MN)

8.64 1-TST 15' (S1MN)

8.64 1-TST 15' (S1MN)

8.64 1-TST 15' (S1MN)

8.64 1-TST 15' (S1MN)

8.64 1-TST 15' (S1MN)

8.64 1-TST 15' (S1MN)

8.64 1-TST 15' (S1MN)

8.64 1-TST 15' (S1MN)

8.64 1-TST 15' (S1MN)

8.64 1-TST 15' (S1MN)

8.64 1-TST 15' (S1MN)

8.64 1-TST 15' (S1MN)

8.64 1-TST 15' (S1MN)

8.64 1-TST 15' (S1MN)

5.05 1-CMP 4'

5.42 1-TST 15' (S1MN)

5.54 9-TST 135' (S1MN)

5.54 9-TST 135' (S1MN)

5.54 9-TST 135' (S1MN)

5.54 9-TST 135' (S1MN)

5.54 9-TST 135' (S1MN)

5.54 9-TST 135' (S1MN)

5.54 9-TST 135' (S1MN)

5.54 9-TST 135' (S1MN)

5.54 9-TST 135' (S1MN)

5.54 9-TST 135' (S1MN)

5.54 9-TST 135' (S1MN)

5.54 9-TST 135' (S1MN)

5.54 9-TST 135' (S1MN)

5.54 9-TST 135' (S1MN)

5.54 9-TST 135' (S1MN)

5.54 9-TST 135' (S1MN)

5.54 9-TST 135' (S1MN)

5.54 9-TST 135' (S1MN)

5.54 9-TST 135' (S1MN)

5.54 9-TST 135' (S1MN)

5.54 9-TST 135' (S1MN)

5.54 9-TST 135' (S1MN)

5.54 9-TST 135' (S1MN)

5.54 9-TST 135' (S1MN)

6.01 6-TST 90' (S1MN)

6.14 2-TST 30' (S1MN)

6.25 8-TST 120' (S1MN)

6.31 1-CMP 4' X 30'

6.31 1-CMP 4' X 30'

6.31 1-CMP 4' X 30'

6.31 1-CMP 4' X 30'

6.31 1-CMP 4' X 30'

6.31 1-CMP 4' X 30'

6.31 1-CMP 4' X 30'

6.31 1-CMP 4' X 30'

6.31 1-CMP 4' X 30'

6.31 1-CMP 4' X 30'

6.31 1-CMP 4' X 30'

6.31 1-CMP 4' X 30'

6.31 1-CMP 4' X 30'

6.31 1-CMP 4' X 30'

6.31 1-CMP 4' X 30'

6.31 1-CMP 4' X 30'

6.31 1-CMP 4' X 30'

6.31 1-CMP 4' X 30'

6.31 1-CMP 4' X 30'

6.31 1-CMP 4' X 30'

6.31 1-CMP 4' X 30'

6.31 1-CMP 4' X 30'

6.31 1-CMP 4' X 30'

6.01 6-TST 90' (S1MN)

6.14 2-TST 30' (S1MN)

6.25 8-TST 120' (S1MN)

6.31 1-CMP 4' X 30'

6.31 1-CMP 4' X 30'

6.31 1-CMP 4' X 30'

6.31 1-CMP 4' X 30'

6.31 1-CMP 4' X 30'

6.31 1-CMP 4' X 30'

6.31 1-CMP 4' X 30'

6.31 1-CMP 4' X 30'

6.31 1-CMP 4' X 30'

6.31 1-CMP 4' X 30'

6.31 1-CMP 4' X 30'

6.31 1-CMP 4' X 30'

6.31 1-CMP 4' X 30'

6.31 1-CMP 4' X 30'

6.31 1-CMP 4' X 30'

6.31 1-CMP 4' X 30'

6.31 1-CMP 4' X 30'

6.31 1-CMP 4' X 30'

6.31 1-CMP 4' X 30'

6.31 1-CMP 4' X 30'

6.31 1-CMP 4' X 30'

6.31 1-CMP 4' X 30'

6.31 1-CMP 4' X 30'

6.01 6-TST 90' (S1MN)

6.14 2-TST 30' (S1MN)

6.25 8-TST 120' (S1MN)

6.31 1-CMP 4' X 30'

6.31 1-CMP 4' X 30'

6.31 1-CMP 4' X 30'

6.31 1-CMP 4' X 30'

6.31 1-CMP 4' X 30'

6.31 1-CMP 4' X 30'

6.31 1-CMP 4' X 30'

6.31 1-CMP 4' X 30'

6.31 1-CMP 4' X 30'

6.31 1-CMP 4' X 30'

6.31 1-CMP 4' X 30'

6.31 1-CMP 4' X 30'

6.31 1-CMP 4' X 30'

6.31 1-CMP 4' X 30'

6.31 1-CMP 4' X 30'

6.31 1-CMP 4' X 30'

6.31 1-CMP 4' X 30'

6.31 1-CMP 4' X 30'

6.31 1-CMP 4' X 30'

6.31 1-CMP 4' X 30'

6.31 1-CMP 4' X 30'

6.31 1-CMP 4' X 30'

6.31 1-CMP 4' X 30'

6.01 6-TST 90' (S1MN)

6.14 2-TST 30' (S1MN)

6.25 8-TST 120' (S1MN)

6.31 1-CMP 4' X 30'

6.31 1-CMP 4' X 30'

6.31 1-CMP 4' X 30'

6.31 1-CMP 4' X 30'

6.31 1-CMP 4' X 30'

6.31 1-CMP 4' X 30'

6.31 1-CMP 4' X 30'

6.31 1-CMP 4' X 30'

6.31 1-CMP 4' X 30'

6.31 1-CMP 4' X 30'

6.31 1-CMP 4' X 30'

6.31 1-CMP 4' X 30'

6.31 1-CMP 4' X 30'

6.31 1-CMP 4' X 30'

6.31 1-CMP 4' X 30'

6.31 1-CMP 4' X 30'

6.31 1-CMP 4' X 30'

6.31 1-CMP 4' X 30'

6.31 1-CMP 4' X 30'

6.31 1-CMP 4' X 30'

6.31 1-CMP 4' X 30'

6.31 1-CMP 4' X 30'

6.31 1-CMP 4' X 30'

6.01 6-TST 90' (S1MN)

6.14 2-TST 30' (S1MN)

6.25 8-TST 120' (S1MN)

6.31 1-CMP 4' X 30'

6.31 1-CMP 4' X 30'

6.31 1-CMP 4' X 30'

6.31 1-CMP 4' X 30'

6.31 1-CMP 4' X 30'

6.31 1-CMP 4' X 30'

6.31 1-CMP 4' X 30'

6.31 1-CMP 4' X 30'

6.31 1-CMP 4' X 30'

6.31 1-CMP 4' X 30'

6.31 1-CMP 4' X 30'

6.31 1-CMP 4' X 30'

6.31 1-CMP 4' X 30'

6.31 1-CMP 4' X 30'

6.31 1-CMP 4' X 30'

6.31 1-CMP 4' X 30'

6.31 1-CMP 4' X 30'

6.31 1-CMP 4' X 30'

6.31 1-CMP 4' X 30'

6.31 1-CMP 4' X 30'

6.31 1-CMP 4' X 30'

6.31 1-CMP 4' X 30'

6.31 1-CMP 4' X 30'

6.01 6-TST 90' (S1MN)

6.14 2-TST 30' (S1MN)

6.25 8-TST 120' (S1MN)

6.31 1-CMP 4' X 30'

6.31 1-CMP 4' X 30'

6.31 1-CMP 4' X 30'

6.31 1-CMP 4' X 30'

6.31 1-CMP 4' X 30'

6.31 1-CMP 4' X 30'

6.31 1-CMP 4' X 30'

6.31 1-CMP 4' X 30'

6.31 1-CMP 4' X 30'

6.31 1-CMP 4' X 30'

6.31 1-CMP 4' X 30'

6.31 1-CMP 4' X 30'

6.31 1-CMP 4' X 30'

6.31 1-CMP 4' X 30'

6.31 1-CMP 4' X 30'

6.31 1-CMP 4' X 30'

6.31 1-CMP 4' X 30'

6.31 1-CMP 4' X 30'

6.31 1-CMP 4' X 30'

6.31 1-CMP 4' X 30'

6.31 1-CMP 4' X 30'

6.31 1-CMP 4' X 30'

6.31 1-CMP 4' X 30'

6.01 6-TST 90' (S1MN)

6.14 2-TST 30' (S1MN)

6.25 8-TST 120' (S1MN)

6.31 1-CMP 4' X 30'

6.31 1-CMP 4' X 30'

6.31 1-CMP 4' X 30'

6.31 1-CMP

LEAD 305B

SOUTHERN PACIFIC RAILROAD ACQUIRED BY UNION PACIFIC-STB FINANCE DOC #32760 EFFECTIVE SEPTEMBER 11, 1996

FILE PAGE	
LAST REVISED	
JANUARY 13, 2004	

SLIMS JANUARY 8, 2003

RD XING UPDATED NOVEMBER 26, 2001	344 (187)
--------------------------------------	-----------

[illegible][illegible][illegible]

0.01	0.45	0.87	0.88	0.89	0.90	0.91	0.92	0.93	0.94	0.95	0.96	0.97	0.98	0.99	1.00
3.0	3.3	3.6	3.9	4.2	4.5	4.8	5.1	5.4	5.7	6.0	6.3	6.6	6.9	7.2	7.5
19	20	21	22	23	24	25	26	27	28	29	30	31	32	33	34
0.06	0.07	0.08	0.09	0.10	0.11	0.12	0.13	0.14	0.15	0.16	0.17	0.18	0.19	0.20	0.21

☆ ☆ HISTORICAL MARKER
 1901-1902
 AGE AGE
 FOODS
 1901-1902
 JARROVER
 MADE

RAININ
TOPOGRAPHY
ELEV. TOP OF BATT.
MAR
PRODUCT
A HWY
750

D		C 730	WATSONVILLE JCT COOS BAY
D		Pd	WATSONVILLE CALIFORNIA
D			STATION M.P. CONTROL POINTS B.

[illegible]

1.42
3.4
6
SANTANA
2
5
3
4
8
1

Days of Rain (x)	Days of Sunshine (y)
0	10
1	9
2	8
3	7
4	6
5	5
6	4
7	3
8	2
9	1
10	0

[illegible][illegible]

SLIDE WARNING ... ABOVE SEA LEVEL	43.61	95.81	9.2	5.73	5.73	5.23	3.33	0.22	1.50	2.64	3.83	9.71	9.22	0.12	7.46	0.05	0.18	4.96	8.59
--------------------------------------	-------	-------	-----	------	------	------	------	------	------	------	------	------	------	------	------	------	------	------	------

[illegible]

.....
AUTH. SUPER ELEV.

[illegible][illegible][illegible][illegible]

RAIL SIDING

[illegible][illegible]

WANG		
TING		
GANG		
SIDJING		

MAIN	2003	2003
------	------	------

GRADE	READING DATA	READING	DATE	BY
1	1	1	1	1
2	2	2	2	2
3	3	3	3	3
4	4	4	4	4
5	5	5	5	5
6	6	6	6	6
7	7	7	7	7
8	8	8	8	8
9	9	9	9	9
10	10	10	10	10
11	11	11	11	11
12	12	12	12	12
13	13	13	13	13
14	14	14	14	14
15	15	15	15	15
16	16	16	16	16
17	17	17	17	17
18	18	18	18	18
19	19	19	19	19
20	20	20	20	20
21	21	21	21	21
22	22	22	22	22
23	23	23	23	23
24	24	24	24	24
25	25	25	25	25
26	26	26	26	26
27	27	27	27	27
28	28	28	28	28
29	29	29	29	29
30	30	30	30	30
31	31	31	31	31
32	32	32	32	32
33	33	33	33	33
34	34	34	34	34
35	35	35	35	35
36	36	36	36	36
37	37	37	37	37
38	38	38	38	38
39	39	39	39	39
40	40	40	40	40
41	41	41	41	41
42	42	42	42	42
43	43	43	43	43
44	44	44	44	44
45	45	45	45	45
46	46	46	46	46
47	47	47	47	47
48	48	48	48	48
49	49	49	49	49
50	50	50	50	50
51	51	51	51	51
52	52	52	52	52
53	53	53	53	53
54	54	54	54	54
55	55	55	55	55
56	56	56	56	56
57	57	57	57	57
58	58	58	58	58
59	59	59	59	59
60	60	60	60	60
61	61	61	61	61
62	62	62	62	62
63	63	63	63	63
64	64	64	64	64
65	65	65	65	65
66	66	66	66	66
67	67	67	67	67
68	68	68	68	68
69	69	69	69	69
70	70	70	70	70
71	71	71	71	71
72	72	72	72	72
73	73	73	73	73
74	74	74	74	74
75	75	75	75	75
76	76	76	76	76
77	77	77	77	77
78	78	78	78	78
79	79	79	79	79
80	80	80	80	80
81	81	81	81	81
82	82	82	82	82
83	83	83	83	83
84	84	84	84	84
85	85	85	85	85
86	86	86	86	86
87	87	87	87	87</

[illegible][illegible]

CHM	BE3	PA SU BOOKS \ 19 ROSEVILLE \ SDMS.DGN
-----	-----	---------------------------------------