



**Santa Cruz County
Regional Transportation Commission
Transportation Policy Workshop**

AGENDA

**Thursday, March 19, 2020
9:00 a.m.**

**NOTE LOCATION THIS MONTH
RTC Office
1523 Pacific Ave
Santa Cruz, CA**

**NOTE: Teleconference
Dial-in number (US): (515) 604-9928
Access code: 631038#**

Join the online meeting to see presentations:
<https://www.freeconferencecall.com/wall/santacruzrtc>
Online meeting ID: santacruzrtc

**ADA Accessible location for the public to provide input:
RTC Conference Room, 1523 Pacific Avenue, Santa Cruz, CA**

Due to precautions associated with COVID-19 (coronavirus), we are adapting our meeting format consistent with Governor Newsom's Executive Order which allows local or state legislative bodies to hold Brown Act meetings via teleconference and make meetings accessible electronically. The full executive order can be found [here](#). The RTC is committed to facilitating coordination among agencies and encourages members and interested parties to participate by calling into the number listed above and joining the online meeting. Please do not come to the RTC office if you feel ill.

**If the meeting is subsequently canceled,
the cancellation notice will be posted by 4pm on 3/18/20 on the Commission
webpage:**

<https://scrtc.org/meetings/commission/agendas/>

NOTE

See the last page for details about access for people with disabilities, translation services, and meeting broadcasts.

En Español

Para información sobre servicios de traducción al español, diríjase a la última página.

AGENDAS ONLINE

To receive email notification when the RTC meeting agenda packet is posted on our website, please call (831) 460-3200 or visit scrtc.org/about/esubscriptions/

COMMISSION MEMBERSHIP

| | |
|--|---------------------|
| Caltrans (ex-officio) | Tim Gubbins |
| City of Capitola | Jacques Bertrand |
| City of Santa Cruz | Sandy Brown |
| City of Scotts Valley | Randy Johnson |
| City of Watsonville | Trina Coffman-Gomez |
| County of Santa Cruz | Greg Caput |
| County of Santa Cruz | Ryan Coonerty |
| County of Santa Cruz | Zach Friend |
| County of Santa Cruz | John Leopold |
| County of Santa Cruz | Bruce McPherson |
| Santa Cruz Metropolitan Transit District | Ed Bottorff |
| Santa Cruz Metropolitan Transit District | Aurelio Gonzalez |
| Santa Cruz Metropolitan Transit District | Mike Rotkin |

The majority of the Commission constitutes a quorum for the transaction of business.

1. Roll call

2. Oral communications

Any member of the public may address the Commission on any item within the jurisdiction of the Commission that is not already on the agenda. The Commission will listen to all communication, but in compliance with State law, and may not take action on items that are not on the agenda.

Speakers are requested to sign the sign-in sheet and state their name clearly so that their names can be accurately recorded in the minutes of the meeting.

3. Additions or deletions to consent and regular agendas

CONSENT AGENDA

All items appearing on the consent agenda are considered to be minor or non-controversial and will be acted upon in one motion if no member of the RTC or public wishes an item be removed and discussed on the regular agenda. Members of the Commission may raise questions, seek clarification or add directions to consent agenda items without removing the item from the consent agenda as long as no other Commissioner objects to the change.

4. Approve a resolution proclaiming the existence or threatened existence of an emergency and confirming the RTC Executive Director the RTC's Director of Emergency Services. (**Resolution**)(Resolution will be provided on line by Monday noon 3-16-2020)

5. Approve authorizing the Executive Director to amend the professional engineering services agreement with Bowman and Williams for Site 2 of the 2017 Storm Damage Repairs along the Santa Cruz Branch Rail Line Corridor (**Resolution**)
6. Approve authorizing the Executive Director to amend the professional services agreement with Associated Right of Way Services, Inc. (**Resolution**)

REGULAR AGENDA

7. Emergency Bridge Repair – Ballast Deck Timber Trestle at MP 4.87
(Sarah Christensen, Sr. Transportation Engineer)
 - a. Staff report
8. Review of items to be discussed in closed session

CLOSED SESSION

CONFERENCE WITH LEGAL COUNSEL – ANTICIPATED LITIGATION, initiation of litigation pursuant to Government Code 54956.9 (d)(4): One Case

9. Report on closed session items
10. Next meetings

The next RTC meeting is scheduled for Thursday, April 2, 2020 at 9:00 a.m. at the County of Santa Cruz Supervisor Chambers, 701 Ocean Street, Santa Cruz, CA.

The next Transportation Policy Workshop meeting is scheduled for Thursday, April 16, 2020, at 9:00 a.m. at the RTC Offices, 1523 Pacific Ave, Santa Cruz, CA.

HOW TO REACH US

Santa Cruz County Regional Transportation Commission
1523 Pacific Avenue, Santa Cruz, CA 95060
phone: (831) 460-3200 / fax: (831) 460-3215

COMMENTS FROM THE PUBLIC

Written comments for items on this agenda that are received at the RTC office in Santa Cruz by noon on the day before this meeting will be distributed to Commissioners at the meeting.

HOW TO STAY INFORMED ABOUT RTC MEETINGS, AGENDAS & NEWS

Broadcasts: Many of the meetings are broadcast live. Meetings are cablecast by Community Television of Santa Cruz. Community TV's channels and schedule can be found online (www.communitytv.org) or by calling (831) 425-8848.

Agenda packets: Complete agenda packets are available at the RTC office, on the RTC website (www.sccrtc.org), and at all Santa Cruz County public libraries.

For information regarding library locations and hours, please check online at www.santacruzpl.org or www.cityofwatsonville.org/public-library

On-line viewing: The SCCRTC encourages the reduction of paper waste and therefore makes meeting materials available online. Agendas are typically posted 5 days prior to each meeting. To receive email notification when complete agenda packet materials are posted to our website please visit sccrtc.org/about/esubscriptions/

Newsletters: To sign up for E-News updates on specific SCCRTC projects, go to sccrtc.org/about/esubscriptions/

HOW TO REQUEST

ACCOMMODATIONS FOR PEOPLE WITH DISABILITIES

The Santa Cruz County Regional Transportation Commission does not discriminate on the basis of disability and no person shall, by reason of a disability, be denied the benefits of its services, programs, or activities. This meeting location is an accessible facility. If you wish to attend this meeting and require special assistance in order to participate, please contact RTC staff at 460-3200 (CRS 800/735-2929) at least three working days in advance of this meeting to make arrangements. People with disabilities may request a copy of the agenda in an alternative format. As a courtesy to those person affected, please attend the meeting smoke and scent-free.

SERVICIOS DE TRADUCCIÓN/ TRANSLATION SERVICES

Si gusta estar presente o participar en esta junta de la Comisión Regional de Transporte del Condado de Santa Cruz y necesita información o servicios de traducción al español por favor llame por lo menos con tres días laborables de anticipo al (831) 460-3200 para hacer los arreglos necesarios. (Spanish language translation is available on an as needed basis.) Please make advance arrangements (at least three days in advance) by calling (831) 460-3200.

TITLE VI NOTICE TO BENEFICIARIES

The RTC operates its programs and services without regard to race, color and national origin in accordance with Title VI of the Civil Rights Act. Any person believing to have been aggrieved by the RTC under Title VI may file a complaint with RTC by contacting the RTC at (831) 460-3212 or 1523 Pacific Avenue, Santa Cruz, CA 95060 or online at www.sccrtc.org. A complaint may also be filed directly with the Federal Transit Administration to the Office of Civil Rights, Attention: Title VI Program Coordinator, East Building, 5th Floor-TCR, 1200 New Jersey Ave., SE, Washington, DC 20590.

AVISO A BENEFICIARIOS SOBRE EL TITULO VI

La RTC conduce sus programas y otorga sus servicios sin considerar raza, color u origen nacional de acuerdo al Titulo VI del Acta Sobre los Derechos Civiles. Cualquier persona que cree haber sido ofendida por la RTC bajo el Titulo VI puede entregar queja con la RTC comunicándose al (831) 460-3212 o 1523 Pacific Avenue, Santa Cruz, CA 95060 o en línea al www.sccrtc.org. También se puede quejar directamente con la Administración Federal de

Transporte en la Oficina de Derechos Civiles, Atención: Coordinador del Programa Titulo VI, East Building, 5th Floor-TCR, 1200 New Jersey Avenue, SE, Washington, DC 20590.

TO: Regional Transportation Commission

FROM: Yesenia Parra, Administrative Services Officer

RE: Declaration of Local Health Emergency Regarding Novel Coronavirus (COVID-19) (FD)

RECOMMENDATIONS

Staff recommends that the Regional Transportation Commission (RTC) adopt a resolution ([Attachment 1](#)) proclaiming the existence or threatened existence of an emergency and confirming the RTC Executive Director as the RTC's Director of Emergency Services and direct the proposed newly appointed RTC Director of Emergency Services to take all actions necessary to keep all RTC staff, Commissioners and community members safe.

BACKGROUND

The Centers for Disease Control and Prevention (CDC) continues to closely monitor an outbreak of 2019 novel coronavirus (2019-nCoV) in Wuhan City, Hubei Province, China that began in December 2019. The CDC has established an Incident Management System to coordinate a domestic and international public health response.

Novel coronavirus is causing an outbreak of respiratory illness (COVID-19) in China. Illness with this virus has ranged from mild to severe. Signs and symptoms of infection include fever, cough, and difficulty breathing. Sore throat also has been reported in some patients. Some patients also have reported diarrhea without other symptoms. This new coronavirus has caused severe disease and death in patients who developed pneumonia. Risk factors for severe illness are not yet clear, although older adults and those with chronic medical conditions may be at higher risk for severe illness.

Novel coronavirus has now spread to the United States, including Santa Cruz County. The County of Santa Cruz Health Services Agency has declared a Local Health Emergency regarding COVID-19 authorized by County Health Officer, Dr. Gail Newel.

DISCUSSION

The Santa Cruz Regional Transportation Commission (RTC) should consider proclaiming a local emergency for the RTC and the appointment of an RTC Director of Emergency Services. The purpose of declaring a local health emergency will generally allow a Director of Emergency Services to:

- More effectively respond to COVID-19,
- Seek and utilize mutual aid,
- Potentially obtain reimbursement, and
- Ensure that the RTC staff have all the necessary tools and powers at their disposal to slow the spread of the Coronavirus (COVID-19) outbreak in our area.

Declaring a local emergency disaster is a preventative measure to protect the health and safety of our community.

The RTC is working on developing an internal continuity of operations plan to respond to the Coronavirus outbreak and ensure that continuity of critical functions of the RTC's operations. Plans are also being developed to both protect our employees and members of the public from potentially contracting and spreading the virus in the course of participating in RTC activities.

FISCAL IMPACT

Cal OES and FEMA disaster recovery assistance has not been approved at this stage in the disaster. If approved, the RTC will track all cost relating to the response and preventative measures taken to slow the spread of the Coronavirus outbreak within the jurisdiction of the RTC.

SUMMARY

Staff recommends adopting a resolution (Attachment 1) declaring a local emergency disaster as a preventative measure to protect the health and safety of our community and appointing the RTC Executive Director as the RTC's Director of Emergency Services and to direct the Director of Emergency Services take all actions necessary to keep all RTC staff, Commissioners and community members safe.

Attachments:

Attachment 1: Resolution

TO: Regional Transportation Commission

FROM: Sarah Christensen, P.E., Senior Transportation Engineer

RE: Bowman & Williams Contract Amendment for Site 2 of the 2017 Storm Damage Repairs along the Santa Cruz Branch Rail Corridor

RECOMMENDATIONS

Staff recommends that the Regional Transportation Commission (RTC) approve the attached resolution ([Attachment 1](#)) authorizing the Executive Director to amend the professional engineering services agreement for Site 2 of the 2017 Storm Damage Repairs.

BACKGROUND

In 2017 historic rain and flooding resulted in fallen trees, landslides, erosion, and other damages along the Santa Cruz Branch Rail Line (SCBRL). In February of 2017, the Federal Emergency Management Agency (FEMA) announced that federal disaster assistance had been made available for emergency repair of facilities damaged by the severe 2017 winter storms to eligible local government agencies across California. The RTC submitted a Request for Public Assistance for storm damage repair work along the SCBRL, which was approved by FEMA.

Between November 2017 and January 2018, RTC and FEMA Public Assistance Program staff inspected the damages incurred along the SCBRL. FEMA then issued the Damage Description and Dimensions (DDD) and Scope of Work (SOW) for seven (7) storm damage repair distinct sites (Site).

RTC awarded a total of six (6) contracts to a professional engineering consultant, Bowman & Williams, Inc. (Bowman & Williams), to prepare the construction documents for repairs of Sites 1, 2, 4, 5, 6, and 7. The geotechnical testing, topographic surveys, and final design have been completed, and environmental permitting of the repairs is near complete for Sites 1 and 2. The RTC adopted the plans, specifications, and details for the storm damage repairs Sites 1 and 2 on March 5, 2020.

DISCUSSION

Storm damage sites 1 and 2 are located adjacent to Harkins Slough and Gallighan Slough near mileposts 5.0 to 5.1, which put the Santa Cruz Branch Rail Corridor out of service north of milepost 5. The repair work for Site 1 includes replacement of an

existing 36-inch cross culvert with a new 24 foot long culvert 48 inches in diameter, construction of a new headwall and wingwalls, grading to reestablish ditch flowline, and repair of the embankment and railroad ballast. The repair work for Site 2 includes construction of a 32 foot long double box culvert, each box being 4 feet in height and 6 feet in width, wingwalls, grading and drainage improvements to reestablish the drainage pattern, installation of rock slope protection, and repair of the embankment and railroad ballast, ties, and rails.

The RTC submitted permit applications to the United States Army Corps of Engineers (USACE), the Regional Water Quality Control Board (RWQCB), and the California Department of Fish and Wildlife (CDFW) in 2018. A Biological Assessment (BA) was prepared for the repair project and submitted for formal Section 7 consultation with US Fish and Wildlife Services (USFWS), which was determined in April of 2019 to be covered under the USACE programmatic Biological Opinion (BO). Staff is working with our consultants and regulatory agencies to incorporate revisions to the construction documents in order to obtain the final permits, and anticipates receiving the 404 permit from USACE, 401 permit from RWQCB, and 1602 permit from CDFW within the next 2 weeks.

Recent comments from the RWQCB require revisions to the plans and specifications as part of the permit application and mitigation plan for Sites 1 and 2. Additional revisions were required by the streambed alteration agreement received from CDFW on March 10, 2020. Staff has reallocated existing budget from the design support during bidding and construction task in order to continue progress on the construction documents. Staff has determined that it is justified to continue to sole source this work to Bowman and Williams, as they are already working on the project and procuring a different consultant would result to higher costs and project delays.

Staff recommends the RTC approve the attached resolution (Attachment 1) authorizing the Executive Director to amend the contract with Bowman & Williams with a value of \$17,000 for site 2, bringing the total contract value to \$112,056.

FISCAL IMPACT

It is expected that there will be no new permanent fiscal impacts associated with the contract amendment. This contract is initially funded by Measure D Rail Corridor funds, and RTC will seek reimbursement of disaster relief funds from FEMA and the California Office of Emergency Services (CalOES) for this work. The RTC has programmed a total of \$550,000 for the 2017 Storm Damage Repairs and Cleanup over FY 18/19 and FY 19/20. Sufficient programming capacity exists in FY 19/20 to amend this contract. The FY 19/20 budget for the Santa Cruz Branch Rail Line includes \$269,750 for professional and special services, by which this professional engineering contract is funded. Sufficient budget remains in FY 19/20 to fund the contract amendment.

SUMMARY

Staff is working diligently to obtain permits from regulatory agencies which has required revisions to the plans and specifications as part of the permit application and mitigation plan for Sites 1 and 2. Additional revisions were required by the streambed alteration agreement received from CDFW on March 10, 2020. Staff recommends the RTC authorize the Executive Director to amend the contract with Bowman & Williams for site 2 with a value of \$17,000. Staff plans to advertise the project for construction bids within 2 weeks, assuming permits are issued.

Attachments:

1. Resolution

RESOLUTION NO.

Adopted by the Santa Cruz County Regional Transportation Commission
on the date of March 19, 2020
on the motion of Commissioner
duly seconded by Commissioner

A RESOLUTION AUTHORIZING THE EXECUTIVE DIRECTOR TO AMEND THE CONTRACT
WITH BOWMAN & WILLIAMS TO ADD SCOPE AND COMPENSATION FOR CIVIL
ENGINEERING SERVICES IN ASSOCIATION TO THE 2017 STORM DAMAGE REPAIRS ON
THE SANTA CRUZ BRANCH RAIL LINE – SITE 2: SLOPE EMBANKMENT NEAR BUENA
VISTA CROSSING, CONTRACT NO. TP11716-05

WHEREAS, the Santa Cruz County Regional Transportation Commission (RTC)
purchased the Santa Cruz Branch Rail Line (SCBRL) in October 2012; and

WHEREAS, in early 2017, the SCBRL was damaged due to historic rain storms that
hit Santa Cruz County and other parts of the state; and

WHEREAS, the heavy rain storms of 2017 were declared state and national
disasters and the RTC submitted a Request for Public Assistance to the Federal
Emergency Management Agency (FEMA), which was approved; and

WHEREAS, in late 2017, FEMA inspected the storm damage incurred along the
SCBRL and issued the Damage Description and Dimensions and Scope of Work for seven
(7) distinct storm damage repair sites; and

WHEREAS, civil engineering services are required to produce plans, specifications,
and cost estimates for the permanent storm damage repairs and to help ensure that
FEMA, the California Governor's Office of Emergency Services (CalOES), and Regulatory
Agencies requirements are met; and

WHEREAS, on January 18, 2018, the RTC authorized the Executive Director to
execute a sole source contract with Bowman & Williams, Inc. for up to \$150,000 for civil
engineering services associated with the 2017 Storm Damage Repairs on the SCBRL; and

WHEREAS, on March 13, 2018, a contract (numbered TP11716-05) with Bowman &
Williams, Inc. for \$45,700 for civil engineering services associated with storm damage
Site 2: Slope Embankment near Buena Vista Crossing (Site 2) was executed with term
set to expire on December 31, 2019; and

WHEREAS, on January 17, 2019, the Commission authorized the Executive Director
to execute amendments to Bowman and Williams Contract TP11716-05, provided
amendments are consistent with RTC's approved budget and work plan; and

WHEREAS, on January 17, 2019, the Executive Director executed Amendment 1 to
Contract TP11716-05 with Bowman & Williams, Inc. to increase compensation to an
amount not-to exceed \$58,400; and

WHEREAS, on July 19, 2019, the Executive Director executed Amendment 2 to
Contract TP11716-05 with Bowman & Williams, Inc. to increase compensation to an

amount not-to exceed \$95,056; and,

WHEAREAS, ON November 7, 2019 the Commission authorized the Executive Director to extend the term of the contract through December 31, 2021 for civil engineering services associated with 2017 Storm Damage Site 2, and

WHEREAS, revisions were required by regulatory agencies in order to obtain permits necessary to construct the project, which added scope to the engineering efforts,

THEREFORE, BE IT RESOLVED BY THE SANTA CRUZ COUNTY REGIONAL TRANSPORTATION COMMISSION THAT:

1. The Executive Director is authorized to amend Contract TP11716-05 with Bowman & Williams, Inc. to add compensation for additional scope for civil engineering services associated with 2017 Storm Damage Site 2.
2. The Executive Director is authorized to issue amendments to the professional engineering services agreement for term and/or for compensation of up to \$25,000 in total amendment value, provided there is enough budget capacity for proposed current year’s work and enough programming capacity for future year’s work.
3. The Chair is authorized to authorize the Executive Director to issue additional amendments to the professional engineering services agreement for compensation for up to \$60,000 in total amendment value, provided there is enough approved budget capacity for proposed current year’s work and enough programming capacity for future year’s work.

AYES: COMMISSIONERS

NOES: COMMISSIONERS

ABSTAIN: COMMISSIONERS

ABSENT: COMMISSIONERS

Aurelio Gonzalez, Vice Chair

ATTEST:

Guy Preston, Secretary

Exhibits:

1 – Amendment 4 to Contract No. TP11716-05

Distribution: RTC Fiscal, RTC Project Manager

TO: Regional Transportation Commission

FROM: Brianna Goodman, Transportation Planner

RE: Associated Right of Way Services, Inc. Contract Amendment and Corresponding Budget Amendment

RECOMMENDATIONS

Staff recommends that the Regional Transportation Commission (RTC) approve the attached resolution ([Attachment 1](#)) authorizing the Executive Director to amend the professional services agreement with Associated Right of Way Services, Inc. to clarify scope regarding appraisals for the Highway 1 Chanticleer Bicycle and Pedestrian Overcrossing, and to adjust the contract budget accordingly.

BACKGROUND

After acquiring the Santa Cruz Branch Rail Line right-of-way (ROW) in 2012, the RTC entered into an agreement with the Santa Cruz County Public Works Real Property Division of the Public Works Department for right-of-way services associated with the rail line ROW. Due to workload, the County Public Works real property division could no longer provide the services needed by the RTC. Therefore, the RTC conducted a public procurement and in August 2019, secured the services of Associated Right-of-Way Services, Inc. (AR/WS) primarily to provide real property services associated with ownership of the rail line ROW. The procurement for AR/WS and the resulting contract also included other ROW services, as needed, for projects on the rail line ROW and other projects elsewhere.

DISCUSSION

In addition to the defined *Tasks* and *Ongoing Services* on the Branch Rail Line specified in the AR/WS contract, *Conducting Appraisals and Acquisitions for other Needs as Directed by the RTC* is included in the contract scope of work under *Other Support Services as Needed*.

Staff initially proposed to have the County perform right-of-way support services for the Highway 1 Auxiliary Lanes project between 41st Avenue and Soquel Drive using \$79,000 in State Transportation Improvement Program (STIP) funds. As the project was being developed, the project team determined that the right-of-way support services needed to deliver the project was more extensive than initially anticipated. In addition to services needed to appraise and acquire real property

for the Chanticleer Overcrossing, the team deemed construction easements and utility relocations will also be necessary.

To relieve the burden on County staffing resources, the County requested and the RTC agreed to use its recently procured right-of-way consultant to perform the right-of-way mapping and appraisals for this project, as permitted and outlined in Exhibit A of the proposed contract Amendment 1 (Attachment 2). The cost mapping and appraisal work for the Highway 1 project is estimated to cost \$35,000. It was determined that the full \$79,000 in programmed STIP funds would be needed to fund County right-of-way services and RTC staff time.

Staff determined there is enough budget capacity to commence the right-of-way services work within the existing contract and RTC budget and authorized AR/WS to start work. Staff has determined that it is prudent to now replenish the contract budget and amend the RTC budget to properly account for this added work and ensure that there is enough funding in the contract all relevant budget categories to complete other anticipated work.

Staff recommends the RTC approve the attached resolution (Attachment 1) authorizing the Executive Director to amend the contract with Associated Right of Way Services Inc. (AR/WS) to add \$35,000, bringing the total contract value to \$305,000, and to amend the RTC budget accordingly.

FISCAL IMPACT

It is proposed to fund the AR/WS work on the Highway 1 project with Measure D – Highway Corridor funds. There are enough Measure D funds already programmed in the Measure D Five-Year Program of Projects within the Highway Investment Corridor, which are permitted for this work. A budget amendment is necessary to include additional programmed funds to the FY 2019-20 budget. There are no other fiscal impacts associated with this proposed contract amendment.

SUMMARY

Staff and the County of Santa Cruz would like to utilize the services of AR/WS for *Conducting Appraisals and Acquisitions for other Needs as Directed by the RTC* as currently allowed in the AR/WS contract, and would like to amend the contract to clarify the specific tasks to be completed, as well as the resulting need for additional budget. Staff recommends that the RTC authorize the Executive Director to amend the contract with Associated Right of Way Services, Inc. (AR/WS) to add \$35,000 and add defined scope and to amend the RTC budget accordingly.

Attachments:

1. Resolution
2. Amendment 1, Scope of Services and Fee Estimate

RESOLUTION NO. _____

Adopted by the Santa Cruz County Regional Transportation Commission

on the date of March 19, 2020
on the motion of Commissioner _____
duly seconded by Commissioner _____

A RESOLUTION AUTHORIZING THE EXECUTIVE DIRECTOR TO AMEND THE AGREEMENT WITH ASSOCIATED RIGHT OF WAY SERVICES, INC. FOR REAL PROPERTY SERVICES ASSOCIATED WITH THE BRANCH LINE ROW AND OTHER REAL PROPERTY SERVICES

WHEREAS, the Santa Cruz County Regional Transportation Commission (RTC) acquired the Santa Cruz Branch Rail Line right-of-way in October 2012 and inherited responsibilities as owner of such a property; and

WHEREAS, RTC entered into a contract for professional services with Associated Right of Way Services (AR/WS), Inc., who has demonstrated the experience and expertise for real property services required by the RTC; and

WHEREAS, the County of Santa Cruz and RTC staff would like to utilize the services of AR/WS to assist in real property needs for the Highway 1 - 41st Avenue to Soquel Drive Auxiliary Lane project; and

WHEREAS, this work requires additional budget beyond that originally defined in the contract;

THEREFORE, BE IT RESOLVED BY THE SANTA CRUZ COUNTY REGIONAL TRANSPORTATION COMMISSION:

1. The Executive Director is authorized to amend the agreement with AR/WS to increase the budget by \$35,000 for a maximum amount of \$305,000 for real property services associated with the Santa Cruz Branch Rail Line ROW and other real property services as needed, subject to the review of legal counsel; and
2. The Executive Director is authorized to add defined scope to the agreement for work already included in the contract under *Other Support Services as Needed: Conducting Appraisals and Acquisitions for other Needs as Directed by RTC.*
3. The Executive Director is authorized to amend the FY 2019-20 RTC budget accordingly to implement Items 1 and 2 immediately above.

AYES: COMMISSIONERS:

NOES: COMMISSIONERS:

ABSTAIN: COMMISSIONERS

ATTEST:

Aurelio Gonzalez, Chair

Guy Preston, Secretary

AMENDMENT 1

TO AGREEMENT BETWEEN
ASSOCIATED RIGHT OF WAY SERVICES, INC. AND
THE SANTA CRUZ COUNTY REGIONAL TRANSPORTATION COMMISSION

The parties hereto agree to amend effective this _____ day of _____, 2020 that certain agreement No. TP2047-01 and dated August 22, 2019 between the SANTA CRUZ COUNTY REGIONAL TRANSPORTATION COMMISSION and ASSOCIATED RIGHT OF WAY SERVICES, INC. ("CONTRACTOR") as follows:

ARTICLE 2 - COMPENSATION: Increase the amount of this contract by \$35,000 for a total not to exceed amount of \$305,000.

ATTACHMENT A - SCOPE OF SERVICES: Add defined scope as Task 4 (Exhibit A to this amendment) for work already included in the contract under *Other Support Services as Needed: Conducting Appraisals and Acquisitions for other Needs as Directed by RTC.*

All other provisions of said agreement shall remain the same.

1. CONTRACTOR

2. SANTA CRUZ COUNTY REGIONAL
TRANSPORTATION COMMISSION

Date: _____

Date: _____

By: _____
Larry Castellanos,
Vice President
Associated Right of Way
Services, Inc.

By: _____
Guy Preston,
Executive Director

3. APPROVED AS TO INSURANCE

4. APPROVED AS TO FORM

By: _____
Yesenia Parra,
Administrative Services
Officer

By: _____
Steven Mattis
RTC Legal Counsel

Distribution: RTC Staff, Contractor, Fiscal

EXHIBIT A*Task 4 – Highway 1 41st/Soquel Auxiliary Lanes and Chanticleer Bike/Ped Overcrossing Appraisals*

Working under supervision of RTC and the County of Santa Cruz Department of Public Works, consultant shall prepare draft Notices of Decision to Appraise for RTC review, and prepare summary appraisal reports to determine the fair market value of the rights to be acquired from each subject property in accordance to professional standards, California Eminent Domain Law, California Government Code Section 7260 et seq. Uniform Standards of Professional Appraisal Practice (USPAP) requirements, 49 CFR Part 24, and the Caltrans Right-of-Way Manual and all applicable laws and regulations. Reports shall be prepared by the consultant in an Appraisal Report format in accordance with USPAP Standard Rule 2-2. The definition of "Fair Market Value" shall be used in accordance with California Code of Civil Procedure, Section 1263.320. Each subject property appraisal will be separately bound and prepared in a "stand-alone" format suitable for furnishing to the associated property owners per Caltrans' requirements. The comparable sales analysis shall be in chart format with accompanying analysis in narrative form, comparable data shall be verified with parties to the transaction. All Task 4 deliverables shall be submitted as three hard copies, plus one digital copy.

Deliverables:

Draft Notice of Decision to Appraise for approval
Appraisal Report

TO: Regional Transportation Commission
FROM: Sarah Christensen, P.E., Senior Transportation Engineer
RE: Emergency Bridge Repair – Ballast Deck Timber Trestle at MP 4.87

RECOMMENDATIONS

Staff recommends that the Regional Transportation Commission (RTC) receive an update regarding the response to a potential emergency repair of the bridge at Milepost (MP) 4.87 and take appropriate action to enter into contract(s) and/or increase budget authorization based on information which is expected to be available at the time of the Transportation Policy Workshop (TPW) meeting.

BACKGROUND

In 2017 historic rain and flooding resulted in fallen trees, landslides, erosion, and other damages along the Santa Cruz Branch Rail Line (SCBRL). In February of 2017, the Federal Emergency Management Agency (FEMA) announced that federal disaster assistance had been made available for emergency repair of facilities damaged by the severe 2017 winter storms to eligible local government agencies across California. The RTC submitted a Request for Public Assistance for storm damage repair work along the SCBRL, which was approved by FEMA.

Between November 2017 and January 2018, RTC and FEMA Public Assistance Program staff inspected the damages incurred along the SCBRL. FEMA then issued the Damage Description and Dimensions (DDD) and Scope of Work (SOW) for seven (7) storm damage repair distinct sites (Site).

RTC staff awarded a total of six (6) contracts to a professional engineering consultant, Bowman & Williams, Inc. (Bowman & Williams), to prepare the construction documents for repairs of Sites 1, 2, 4, 5, 6, and 7.

In July 2018, the RTC entered into an Administration, Coordination and Licensing (ACL) Agreement with St. Paul and Pacific Railroad (SPPR) a company of Progressive Rail which designates SPPR as the new railroad operator. Section 5 of the ACL agreement with SPPR requires that the Commission fund and complete initial repairs to the freight easement property. Initial repairs include repair of storm damage, maintenance of drainage facilities (such as culverts and drainage ditches), bridge repairs, at-grade roadway crossing maintenance, track and ballast repairs, and vegetation control.

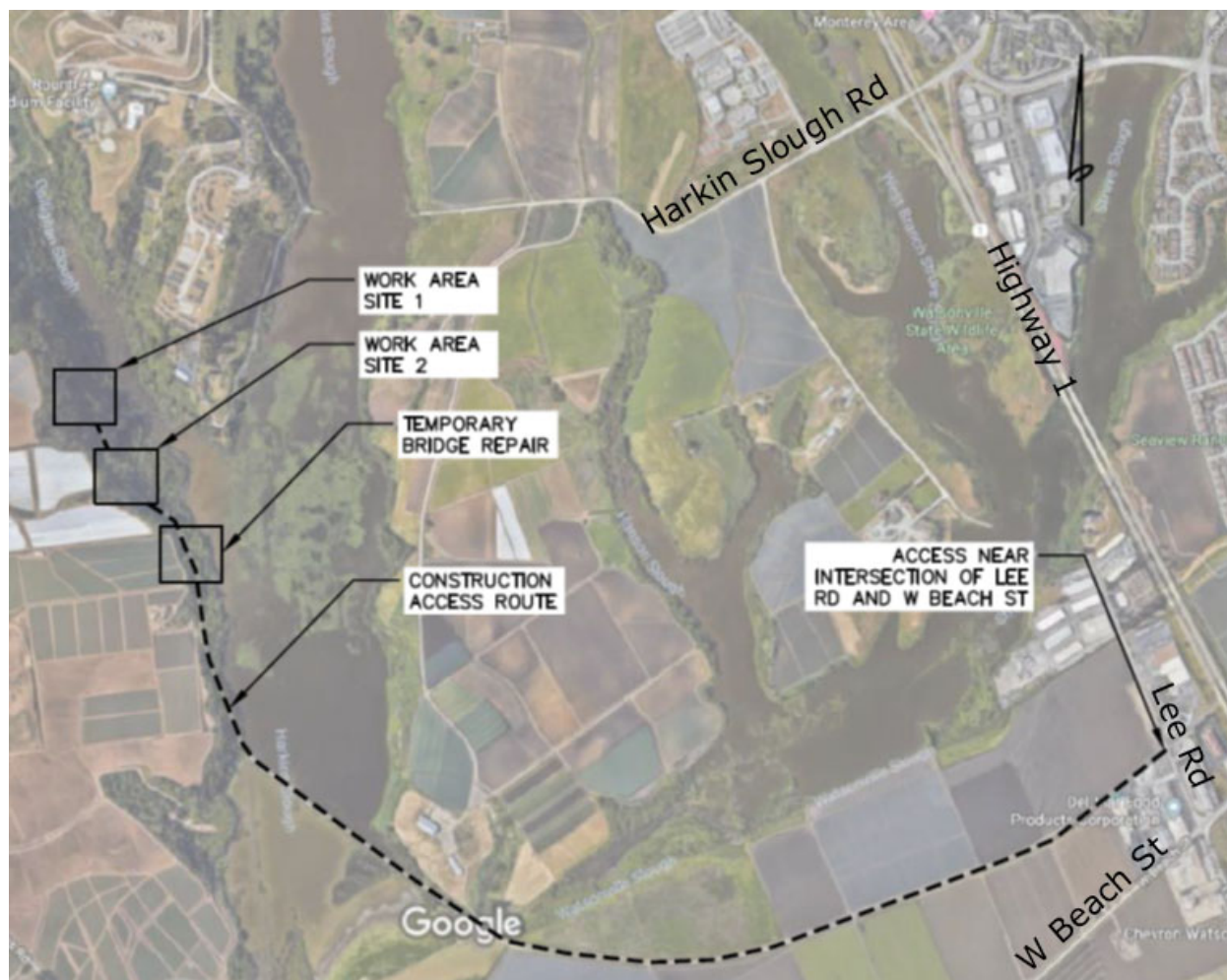
In 2018, RTC staff released a Request for Qualifications (RFQ) for engineering services and established a list of qualified on-call engineering consultants for civil engineering, structural engineering/inspections, and construction management services for infrastructure projects along the Santa Cruz Branch Rail corridor. The Commission authorized contracts with on-call engineering consultants on the approved on-call list for the first set of task orders including inspections, analysis and recommendation of repair and rehabilitation work for bridges, culverts, and other infrastructure on the Santa Cruz Branch Rail Line right-of-way. The 29 bridges along the Santa Cruz Branch Rail corridor were inspected in 2018 and draft inspection reports were developed by on-call engineering consultant RailPros, Inc.

In December of 2019, the RTC awarded a professional engineering services agreement to STV, Inc. who was the top ranked firm from the on-call list of structural engineering firms, for engineering services for phase 1 of the bridge repairs, which included the railroad bridge at MP 4.87.

DISCUSSION

The railroad bridge at MP 4.87 is a ballast deck timber trestle over a seasonal drainage. This bridge has 13 spans with a total length of 180 feet. The inspection of the bridge conducted in December 2018 by RailPros put the bridge out of service due to scour damage to 3 foundation piles at bridge Bent 3. Scour damage is defined as erosion of supporting soil material surrounding structural elements, caused by high amounts of storm runoff, seepage from irrigation, or natural groundwater.

The bridge is located adjacent to Harkin Slough west of Watsonville and south of the storm damage repair Sites 1 & 2. Due to the remote location of storm damage repair Sites 1 & 2, construction access was assumed to be required by rail which will entail the construction contractor to haul in and out construction equipment and materials using track-mounted equipment and/or flatbed rail cars. Because the bridge is located between the next southernmost grade crossing in the City of Watsonville and the storm damage Sites 1 and 2, the bridge must be able to carry construction loads in order to make the repair. A map showing the access location, temporary bridge repair location, and storm damage repair Sites 1 & 2 is shown below:



Following the RailPros 2018 inspection, design work was added to the Sites 1 and 2 storm damage repair projects to include a temporary shoring detail in order to install bracing of the existing bridge as a first order of work on the construction contract. The temporary shoring was deemed necessary to allow freight-level loads to travel over the bridge and access Sites 1 and 2. The temporary shoring would allow the storm damage repair project to be completed in advance of a permanent repair. The cost of the temporary shoring repair was included in an amendment to the Bowman and Williams contract, which was authorized by the Commission in January 2019.

Staff provided for the permanent repair for this bridge under a separate contract with STV Inc., as part of the Phase 1 Bridge Repairs, which was authorized by the RTC in December 2019.

In early January of 2020, the RTC was notified that a landslide had occurred at an adjacent agricultural field located upslope and west of the Santa Cruz Branch Rail Line, adjacent to the bridge at MP 4.87. The landslide was caused by agricultural and storm runoff and a failed drainage pipe. Staff contacted the owner of the adjacent property notifying them of the damage caused to the branch line and

called a field meeting to assess the damage. On February 3, 2020, staff met on site with the property owner to assess the landslide. At that meeting, staff also inspected the bridge at MP 4.87 and observed new severe scour damage at Bent 2 of the bridge. The damage appeared to be caused by the re-routed drainage course due to the recent storms and upslope failure.

Staff requested a scope of services and fee estimate from Bowman & Williams to include an additional temporary shoring detail in the plans to address the new scour at Bent 2. Bowman & Williams' bridge design subconsultant is also RailPros. Based on photographs provided, RailPros notified staff that the bridge is in extremely vulnerable condition and could be subject to sudden critical collapse due to the scour damage now occurring at multiple bents. Staff has since authorized an on-site inspection of the bridge with RailPros, which is expected to occur prior to this TPW meeting. The inspection is needed to better assess the condition and locations of scour, which may warrant an emergency repair of this bridge as a separate contract in advance of the planned storm damage repairs at Sites 1 and 2.

If following the inspection an emergency repair is warranted, the Executive Director might issue emergency sole-source contracts for the following:

- Professional Engineering Services, to prepare plans, details, and specifications for the emergency bridge repair.
- Environmental Services, to assist with emergency environmental permits as required.
- Construction, to construct the emergency repair which may be temporary or permanent in nature depending on the availability of materials needed to complete the repair. Priority will be given to construction contractors who are immediately available.
- Construction Management Services, to administer the construction contract, perform inspections, coordinate responses to Requests for Information (RFI's) and issue Contract Change Orders (CCO's) as necessary.

The Executive Director has the authority to issue emergency contracts as permitted by the RTC procurement policies under emergency circumstances as described in section 5.1 Authority and Approvals of the Fiscal Policy, sub-section B which reads:

In the event of an emergency or urgent need, the Executive Director is authorized to take all necessary actions to prevent significant unnecessary loss to RTC, a shutdown of public services, or to address a situation threatening the health or safety of persons or property, including authorization to contract with a contractor or consultant on a sole source basis, consistent with applicable state or federal law without prior approval from the Board of Directors. In the event such an emergency or urgent need occurs, the Executive Director will consult with the Chair of the Board and submit a report to the Commission at its next regular meeting to obtain ratification for those actions.

If contract(s) are issued prior to the meeting, details of contract(s) will be provided as soon as possible but no later than this scheduled meeting. Additional authority to enter into contract(s) and/or amend the FY 19/20 budget may be requested as necessary.

FISCAL IMPACT

The RTC's budget for the Santa Cruz Branch Rail Line provides funds to maintain and repair the railroad infrastructure for preservation as needed. RTC's approved Measure D Five-Year Program of Projects includes a total of \$2.2 Million for Railroad Bridge rehabilitation, with approximately \$1.7 Million of funding capacity remaining for this work. If emergency contract(s) are issued prior to this scheduled meeting, the Executive Director will limit the value as to not exceed this current fiscal year's budget capacity. Additional budget capacity may be requested at this TPW meeting, if additional funding is needed to fund the full scope of work, as determined by inspections.

SUMMARY

An emergency repair of the ballast deck timber trestle may be needed at the bridge at MP 4.87, with an inspection to take place as soon as possible. Staff will provide additional information about necessary steps and authorizations needed prior to or at this scheduled TPW meeting.

