

Handouts Item #17, November 5, 2020

Attachment 4, Exhibit C page 17-69

Attachment 5 Exhibit D, page 17-124

Attachment 5, Exhibit E, page 17-126

Attachment 5 Exhibit F, page 17-128

EXHIBIT A

That portion of the land described in a Grant Deed to Ocean Shore Railway Company recorded October 19, 1918 in Volume 285 at Page 68 of Official Records in the County Recorder's Office, County of Santa Cruz, State of California, lying **northeasterly** of the line described as follows:

Commencing from Point 'B', being a found 2.5" aluminum disk stamped "HPGN 04 02" as shown on the map filed Volume 122 of Maps at Page 35 in the said County Recorder's Office, said point being North 44°35'02" West, a distance of 25,321.60 feet from Point 'A', being a found 3.5" Corps of Engineers brass disk stamped "MAJOR TPC 1971" as shown on the map filed Volume 122 of Maps at Page 35 in the said County Recorder's Office; thence,

South 50°59'20" East, a distance of 28,396.26 feet to the Point of Beginning, said point being the beginning of a curve concaved to the southwest having a radius of 1,886.08 feet, the radial bearing to said point being North 25°43'40" East; thence,

North 25°43'40" East, a distance of 50.00 feet to a curve concaved to the southwest having a radius of 1,936.08 feet, radial bearing to said point being North 25°43'40" East; thence,

Southeasterly along said curve through a central angle of 35°37'23", an arc distance of 1,203.73 feet; thence,

South 28°38'58" East, a distance of 932.20 feet to a curve concaved to the northeast having a radius of 2,266.01 feet; thence,

Southeasterly along said curve through a central angle of 30°22'00", an arc distance of 1,200.98 feet; thence,

South 59°00'58" East, a distance of 569.67 feet; thence,

South 30°59'02" West, a distance of 15.00 feet; thence,

South 59°00'58" East, a distance of 571.92 feet; thence,

North 30°59'02" East, a distance of 20.00 feet; thence,

South 59°00'58" East, a distance of 74.33 feet; thence,

South 30°59'02" West, a distance of 20.00 feet; thence,

South 59°00'58" East, a distance of 344.56 feet; thence,

North 30°59'02" East, a distance of 5.00 feet; thence,

South 59°00'58" East, a distance of 975.24 feet; thence,

North 30°59'02" East, a distance of 10.00 feet; thence,

South 59°00'58" East, a distance of 759.17 feet

Excepting that portion lying within the land described in a Grant Deed to Southern Pacific Railroad Company recorded November 6, 1918 in Volume 281 at Page 164 of Official Records in the County Recorder's Office, County of Santa Cruz, State of California.

The land described contains 14,041 square feet more or less and graphically shown on Exhibit B herein.



EXHIBIT B

CONTROL NOTES

COORDINATES HEREON AND THE BASIS OF BEARINGS ARE DERIVED FROM GPS OBSERVATIONS. LOCAL GPS SURVEY CONTROL COORDINATES ARE AS FOLLOWS:

HPGN CA 04 02 MAJORS TPC 1971
PID HT3666 PID GU4087

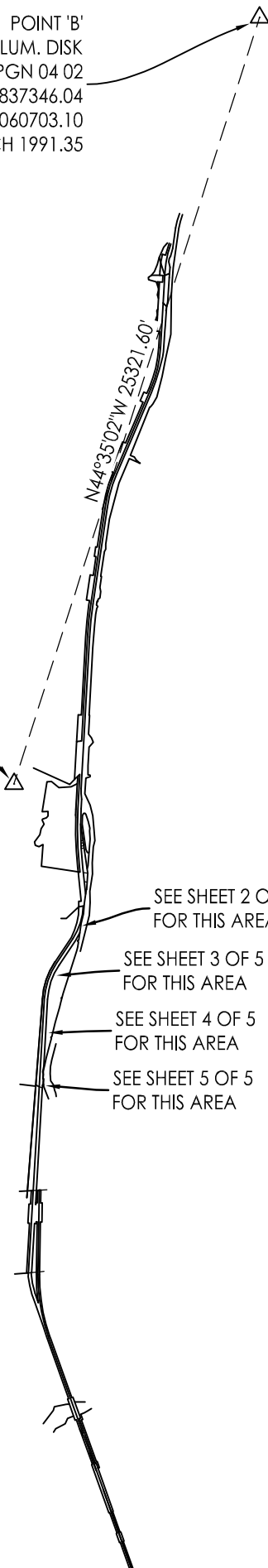
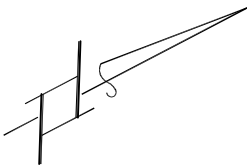
N. 1837346.04 N. 1819311.40
E. 6060703.10E. 6078477.67

BASIS OF BEARINGS

THE BASIS OF BEARINGS FOR THIS SURVEY IS BASED ON STATE PLANE COORDINATES BETWEEN POINT "A" AND POINT "B" HAVING A GRID BEARING OF S44°35'02"E AS SHOWN ON 122 MAPS 35.

POINT 'B'
FOUND 2.5" ALUM. DISK
STAMPED HPGN 04 02
N. 1837346.04
E. 6060703.10
NAD83, ZONE 3, EPOCH 1991.35

POINT 'A'
FOUND 3.5" CORPS OF ENGINEERS BRASS
DISK STAMPED "MAJORS TPC 1971"
N. 1819311.40
E. 6078477.67
NAD83, ZONE 3, EPOCH 1991.35



SEE SHEET 2 OF 5
FOR THIS AREA

SEE SHEET 3 OF 5
FOR THIS AREA

SEE SHEET 4 OF 5
FOR THIS AREA

SEE SHEET 5 OF 5
FOR THIS AREA



3765 S. Higuera St., Ste. 102 • San Luis Obispo, CA 93401
p: (805) 543-1794 • f: (805) 543-4609

www.rrmdesign.com

EXHIBIT B

POC
POINT "B"
FOUND 2.5" ALUM. DISK
STAMPED HPGN 04 02
N. 1837346.04
E. 6060703.10
NAD83, ZONE 3, EPOCH 1991.35

CALIFORNIA STATE
DEPARTMENT OF
PARKS & RECREATION

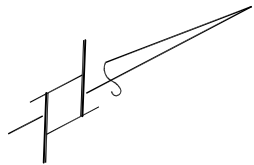
POB

N25°43'40"E 50.00'

S50°59'20"E 28396.26'



Steven B. Webster



SCALE: 1" = 200'

rrm design group

3765 S. Higuera St., Ste. 102 • San Luis Obispo, CA 93401
p: (805) 543-1794 • f: (805) 543-4609

www.rrmdesign.com

CALIFORNIA STATE
DEPARTMENT OF
PARKS & RECREATION

285 DEEDS 68

HIGHWAY 1/
CABRILLO HIGHWAY

Δ=35°37'23" R=1936.08' L=1203.73'

SANTA CRUZ COUNTY REGIONAL
TRANSPORTATION COMMISSION
281 DEEDS 164

S28°38'58"E 932.20'

SEE SHEET 3

SHEET 2 OF 5

EXHIBIT B

SEE SHEET 2

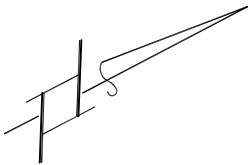
RICHARD ALDERSON

CALIFORNIA STATE
DEPARTMENT OF
PARKS & RECREATION

CALIFORNIA STATE
DEPARTMENT OF
PARKS & RECREATION



Steven B. Webster



SCALE: 1" = 200'

rrm design group

3765 S. Higuera St., Ste. 102 • San Luis Obispo, CA 93401
p: (805) 543-1794 • f: (805) 543-4609

www.rrmdesign.com

SEE SHEET 4

S59°00'58"E 569.67'

$\Delta=30^{\circ}22'00''$ R=2266.01' L=1200.98'

SANTA CRUZ COUNTY REGIONAL TRANSPORTATION COMMISSION
285 DEEDS 68
281 DEEDS 164

S28°38'58"E 932.20'

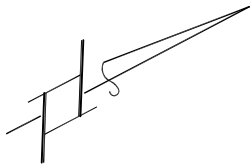
EXHIBIT B

SEE SHEET 3

LINE DATA		
LINE	DIRECTION	LENGTH
L1	S30°59'02"W	15.00'
L2	N30°59'02"E	20.00'
L3	S59°00'58"E	74.33'
L4	S30°59'02"W	20.00'
L5	N30°59'02"E	5.00'



Steven B. Webster



SCALE: 1" = 200'

rrm design group

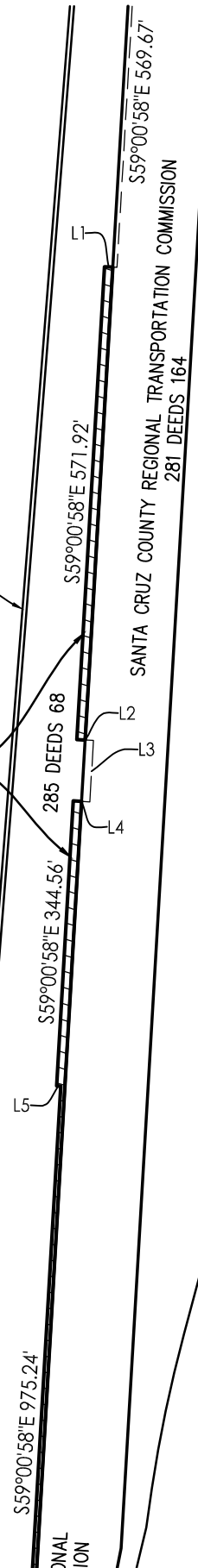
3765 S. Higuera St., Ste. 102 • San Luis Obispo, CA 93401
 p: (805) 543-1794 • f: (805) 543-4609

www.rrmdesign.com

RICHARD ALDERSON

PARCEL
 14041± S.F. (0.32± AC.)

CALIFORNIA STATE
 DEPARTMENT OF
 PARKS & RECREATION



CALIFORNIA STATE
 DEPARTMENT OF
 PARKS & RECREATION

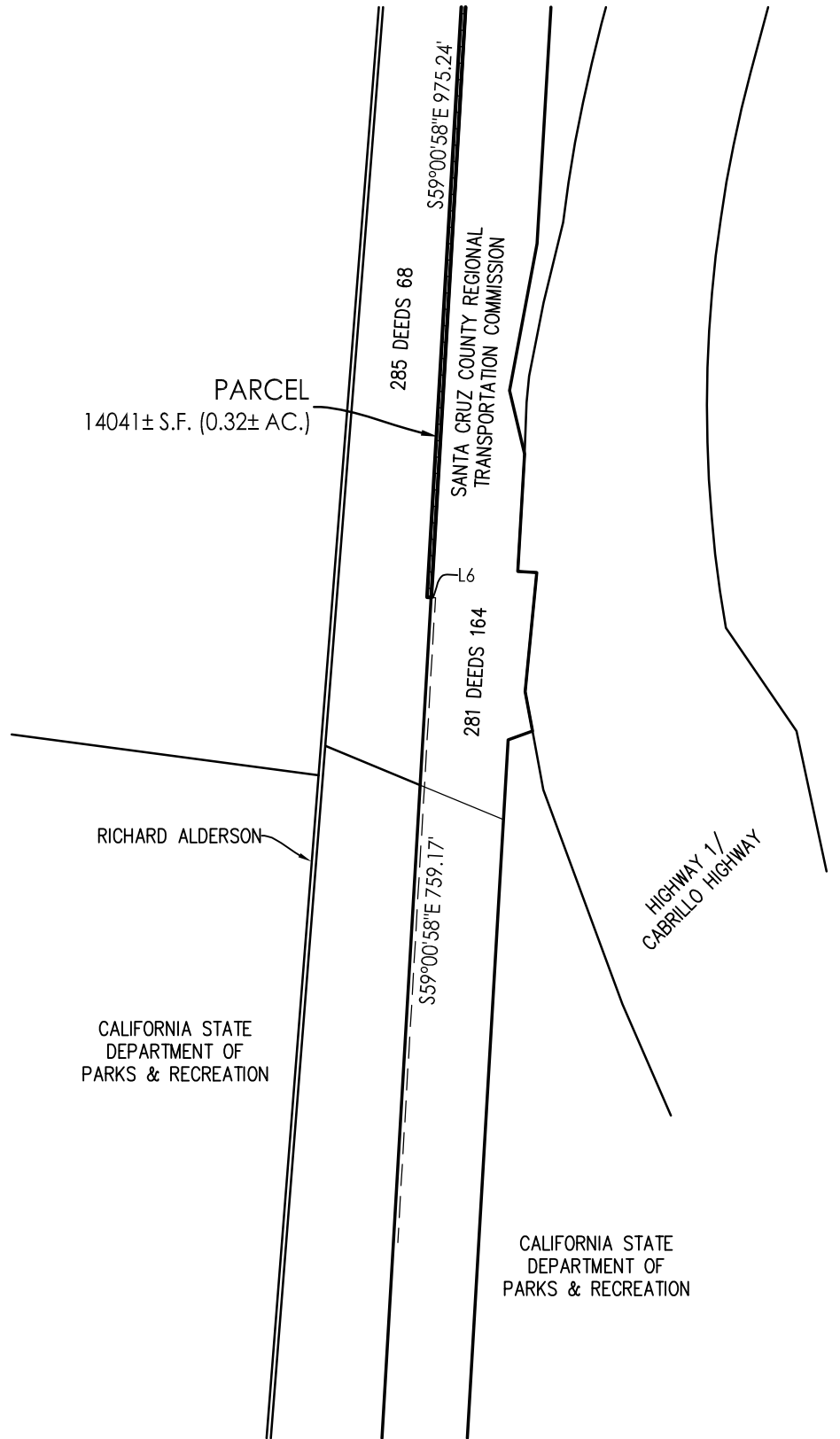
HIGHWAY 1/
 CABRILLO HIGHWAY

SEE SHEET 5

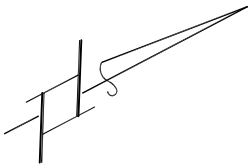
EXHIBIT B

LINE DATA		
LINE	DIRECTION	LENGTH
L6	N30°59'02"E	10.00'

SEE SHEET 5



Steven B. Webster



SCALE: 1" = 200'



3765 S. Higuera St., Ste. 102 • San Luis Obispo, CA 93401
 p: (805) 543-1794 • f: (805) 543-4609

www.rrmdesign.com

Item #17 Handout Attachment 5 Exhibit D Page 17-124

EXHIBIT A

That portion of the land described in a Grant Deed to Ocean Shore Railway Company recorded January 29, 1906 in Volume 183 at Page 104 of Official Records in the County Recorder's Office, County of Santa Cruz, State of California, lying **southwesterly**, **westerly** and **northwesterly** the line described as follows:

Commencing from Point 'B', being a found 2.5" aluminum disk stamped "HPGN 04 02" as shown on the map filed Volume 122 of Maps at Page 35 in the said County Recorder's Office, said point being North 44°35'02" West, a distance of 25,321.60 feet from Point 'A', being a found 3.5" Corps of Engineers brass disk stamped "MAJOR TPC 1971" as shown on the map filed Volume 122 of Maps at Page 35 in the said County Recorder's Office; thence,

South 42°08'39" East, a distance of 8,613.33 feet to the Point of Beginning; thence,

South 30°58'50" West, a distance of 43.51 feet; thence,

South 58°59'58" East, a distance of 486.31 feet; thence,

South 31°00'02" West, a distance of 25.00 feet; thence,

South 58°59'58" East, a distance of 73.98 feet; thence,

North 31°00'02" East, a distance of 25.00 feet; thence,

South 58°59'58" East, a distance of 260.97 feet; thence,

South 30°45'46" West, a distance of 5.00 feet; thence,

South 58°59'58" East, a distance of 84.51 feet; thence,

South 29°36'08" West, a distance of 74.36 feet; thence,

South 59°01'55" East, a distance of 226.67 feet; thence,

North 31°51'31" East, a distance of 83.18 feet; thence,

South 59°01'20" East, a distance of 788.09 feet; thence,

South 30°58'40" West, a distance of 25.00 feet to the southwesterly line of said Grant Deed to Ocean Shore Railway Company.

Excepting that portion lying northeasterly of the southwesterly line of State Highway 1.

The land described contains 331,666 square feet more or less and graphically shown on Exhibit B herein.



EXHIBIT B

CONTROL NOTES

COORDINATES HEREON AND THE BASIS OF BEARINGS ARE DERIVED FROM GPS OBSERVATIONS. LOCAL GPS SURVEY CONTROL COORDINATES ARE AS FOLLOWS:

HPGN CA 04 02 MAJORS TPC 1971
PID HT3666 PID GU4087

N. 1837346.04 N. 1819311.40
E. 6060703.10E. 6078477.67

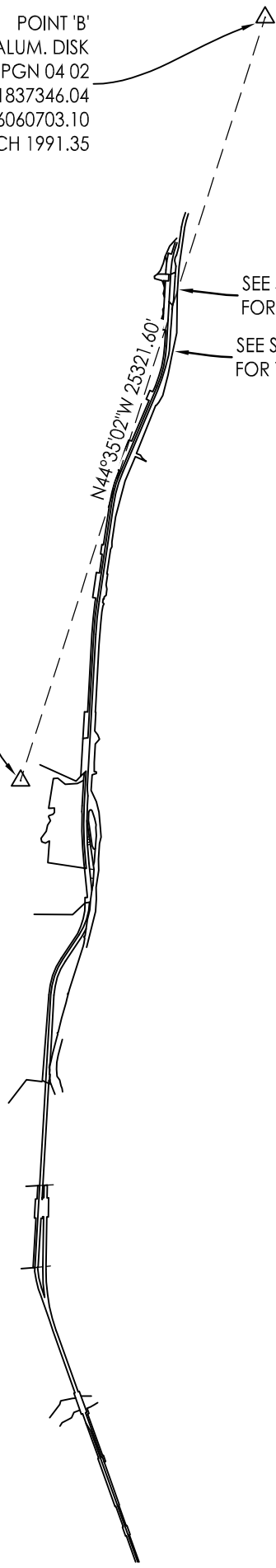
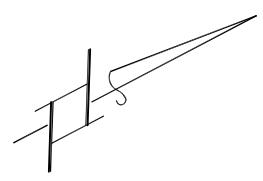
BASIS OF BEARINGS

THE BASIS OF BEARINGS FOR THIS SURVEY IS BASED ON STATE PLANE COORDINATES BETWEEN POINT "A" AND POINT "B" HAVING A GRID BEARING OF $S44^{\circ}35'02''E$ AS SHOWN ON 122 MAPS 35.

POINT 'B'
FOUND 2.5" ALUM. DISK
STAMPED HPGN 04 02
N. 1837346.04
E. 6060703.10
NAD83, ZONE 3, EPOCH 1991.35

SEE SHEET 2 OF 3
FOR THIS AREA
SEE SHEET 3 OF 3
FOR THIS AREA

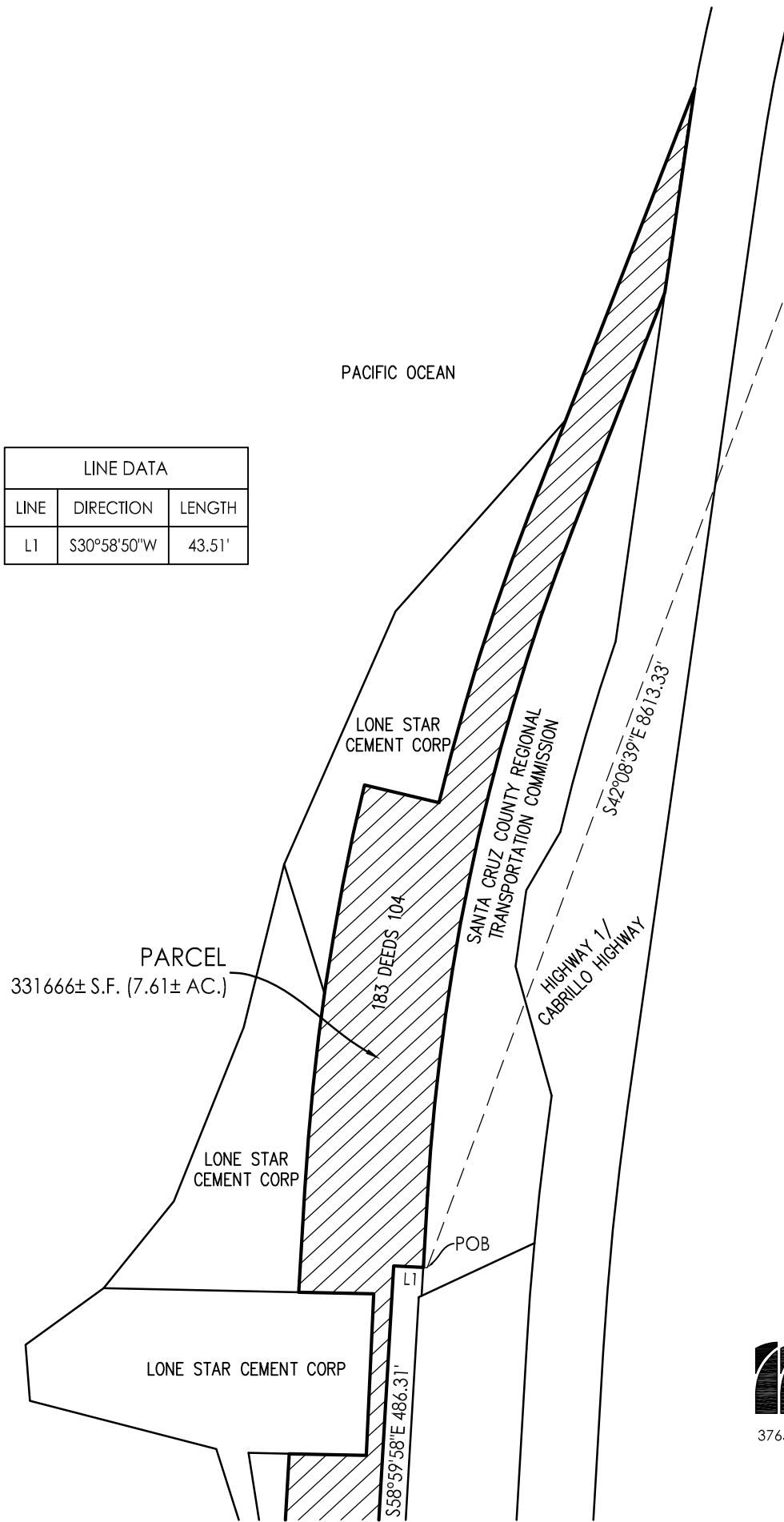
POINT 'A'
FOUND 3.5" CORPS OF ENGINEERS BRASS
DISK STAMPED "MAJORS TPC 1971"
N. 1819311.40
E. 6078477.67
NAD83, ZONE 3, EPOCH 1991.35



3765 S. Higuera St., Ste. 102 • San Luis Obispo, CA 93401
p: (805) 543-1794 • f: (805) 543-4609
www.rrmdesign.com

EXHIBIT B

LINE DATA		
LINE	DIRECTION	LENGTH
L1	S30°58'50"W	43.51'

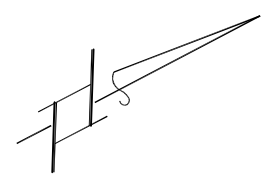


PARCEL
331666± S.F. (7.61± AC.)

POC
POINT "B"
FOUND 2.5" ALUM. DISK
STAMPED HPGN 04 02
N. 1837346.04
E. 6060703.10
NAD83, ZONE 3, EPOCH 1991.35



Steven B. Webster



SCALE: 1" = 200'

rrm design group

3765 S. Higuera St., Ste. 102 • San Luis Obispo, CA 93401
p: (805) 543-1794 • f: (805) 543-4609
www.rrmdesign.com

SEE SHEET 3

SHEET 2 OF 3

EXHIBIT B

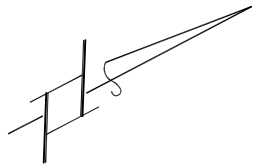
SEE SHEET 2

LINE DATA		
LINE	DIRECTION	LENGTH
L2	S31°00'02"W	25.00'
L3	S58°59'58"E	73.98'
L4	N31°00'02"E	25.00'
L5	S30°45'46"W	5.00'
L6	S58°59'58"E	84.51'
L7	S29°36'08"W	74.36'
L8	S59°01'55"E	226.67'
L9	N31°51'31"E	83.18'
L10	S30°58'40"W	25.00'

PARCEL
331666± S.F. (7.61± AC.)



Steven B. Webster

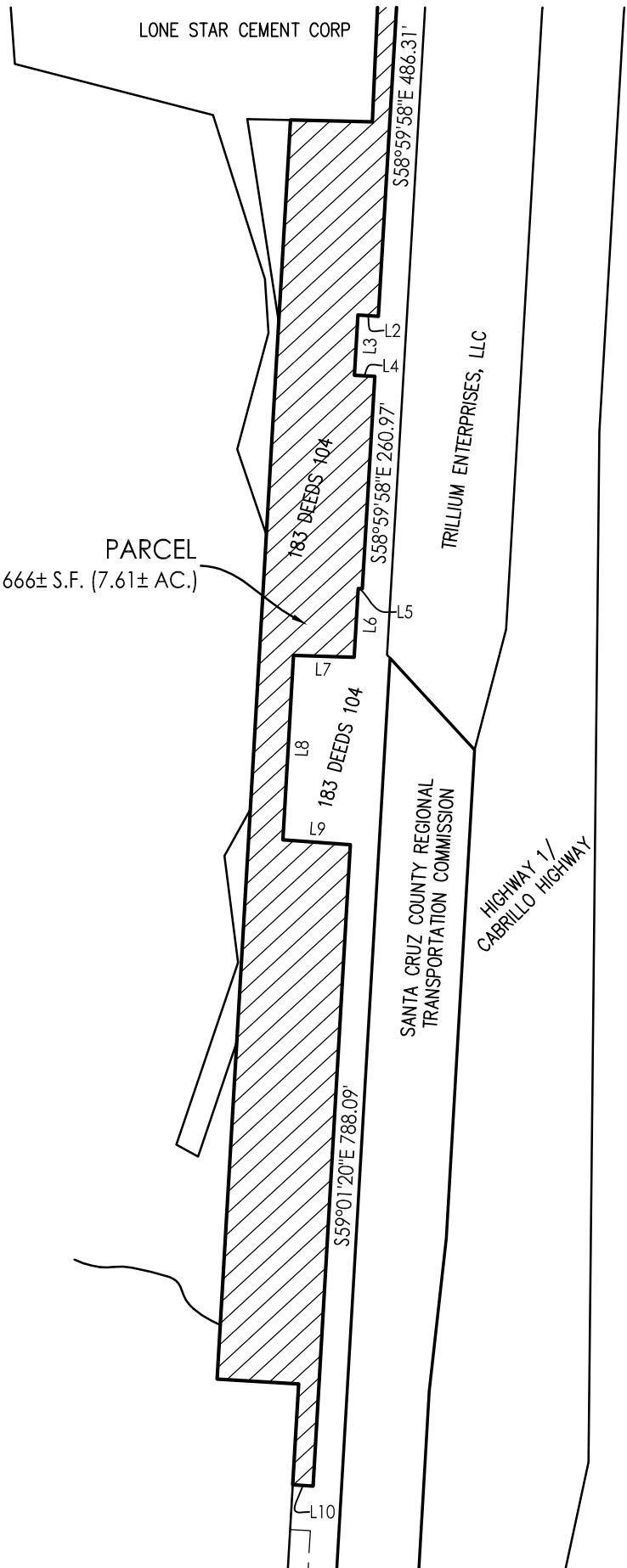


SCALE: 1" = 200'



3765 S. Higuera St., Ste. 102 • San Luis Obispo, CA 93401
p: (805) 543-1794 • f: (805) 543-4609

www.rrmdesign.com



Item #17 Handout - Attachment 5-Exhibit E page 17-126

EXHIBIT A

That portion of the land described in a Grant Deed to Ocean Shore Railway Company recorded January 29, 1906 in Volume 183 at Page 104 of Official Records in the County Recorder's Office, County of Santa Cruz, State of California, lying **northeasterly** of the line described as follows:

Commencing from Point 'B', being a found 2.5" aluminum disk stamped "HPGN 04 02" as shown on the map filed Volume 122 of Maps at Page 35 in the said County Recorder's Office, said point being North 44°35'02" West, a distance of 25,321.60 feet from Point 'A', being a found 3.5" Corps of Engineers brass disk stamped "MAJOR TPC 1971" as shown on the map filed Volume 122 of Maps at Page 35 in the said County Recorder's Office; thence,

South 42°08'39" East, a distance of 8,613.33 feet to the Point of Beginning; thence,

South 59°44'12" East, a distance of 115.54 feet; thence,

South 58°59'58" East, a distance of 794.45 feet; thence,

South 75°01'41" West, a distance of 1.56 feet; thence,

South 59°01'20" East, a distance of 1,135.00 feet; thence,

North 30°58'40" East, a distance of 5.00 feet; thence,

South 59°01'20" East, a distance of 52.61 feet; thence,

South 30°58'40" West, a distance of 5.00 feet; thence,

South 59°01'20" East, a distance of 210.79 feet to a curve concaved to the southwest having a radius of 3,845.83 feet; thence,

Southeasterly along said curve through a central angle of 19°46'00", an arc distance of 1,326.79 feet; thence,

South 39°15'20" East, a distance of 161.89 feet; thence,

North 50°44'40" East, a distance of 5.00 feet; thence,

South 39°15'20" East, a distance of 137.89 feet; thence,

South 50°44'40" West, a distance of 5.00 feet; thence,

South 39°15'20" East, a distance of 321.11 feet; thence,

South 50°44'40" West, a distance of 30.00 feet; thence,

South 39°15'20" East, a distance of 99.34 feet; thence,

South 50°44'40" West, a distance of 10.00 feet; thence,

South 39°15'20" East, a distance of 126.22 feet; thence,

South 50°44'40" West, a distance of 10.00 feet; thence,

South 39°15'20" East, a distance of 481.62 feet; thence,

North 50°44'40" East, a distance of 5.00 feet; thence,

South 39°15'20" East, a distance of 354.38 feet; thence,

North 50°44'40" East, a distance of 10.00 feet; thence,

South 39°15'20" East, a distance of 187.28 feet; thence,

North 50°44'40" East, a distance of 18.29 feet; thence,
South 39°15'20" East, a distance of 81.73 feet; thence,
North 50°44'40" East, a distance of 15.00 feet; thence,
South 39°15'20" East, a distance of 82.59 feet; thence,
North 50°44'40" East, a distance of 10.00 feet; thence,
South 39°15'20" East, a distance of 27.49 feet; thence,
South 50°44'40" West, a distance of 10.00 feet; thence,
South 39°15'20" East, a distance of 118.63 feet; thence,
North 50°44'40" East, a distance of 57.66 feet; thence,
South 39°15'45" East, a distance of 114.57 feet; thence,
South 50°44'40" West, a distance of 30.96 feet; thence,
North 39°15'20" West, a distance of 39.20 feet; thence,
South 50°44'40" West, a distance of 25.00 feet; thence,
South 39°15'20" East, a distance of 99.89 feet; thence,
North 50°44'40" East, a distance of 5.00 feet; thence,
South 39°15'20" East, a distance of 478.52 feet; thence,
North 50°44'40" East, a distance of 5.00 feet; thence,
South 39°15'20" East, a distance of 182.63 feet; thence,
South 50°44'40" West, a distance of 20.00 feet to a curve concaved to the northeast
having a radius of 3,492.02 feet, the radial bearing to said point being South 50°44'40"
West; thence,
Southeasterly along said curve through a central angle of 1°36'21", an arc distance of
97.87 feet; thence,
South 49°03'12" West, a distance of 21.57 feet to a curve concaved to the northeast
having a radius of 3,502.02 feet, the radial bearing to said point being South 49°03'12"
West; thence,
Southeasterly along said curve through a central angle of 3°00'53", an arc distance of
184.27 feet; thence,
South 46°02'19" West, a distance of 10.00 feet to a curve concaved to the northeast
having a radius of 3,512.02 feet, the radial bearing to said point being South 46°02'19"
West; thence,
Southeasterly along said curve through a central angle of 9°57'31", an arc distance of
610.42 feet; thence,
South 53°55'12" East, a distance of 1,083.30 feet; thence,
North 36°04'48" East, a distance of 10.00 feet; thence,
South 53°55'12" East, a distance of 218.50 feet; thence,
North 36°04'48" East, a distance of 35.10 feet; thence,
South 53°55'12" East, a distance of 358.63 feet; thence,

South 36°04'48" West, a distance of 25.16 feet; thence,
South 53°54'50" East, a distance of 49.60 feet; thence,
South 36°05'10" West, a distance of 20.00 feet; thence,
South 53°54'50" East, a distance of 115.13 feet; thence,
South 36°05'10" West, a distance of 20.00 feet; thence,
South 53°54'50" East, a distance of 54.92 feet; thence,
South 36°05'10" West, a distance of 20.00 feet; thence,
South 53°54'50" East, a distance of 48.83 feet; thence,
South 36°05'10" West, a distance of 15.11 feet; thence,
South 53°54'50" East, a distance of 72.79 feet; thence,
South 36°05'10" West, a distance of 20.00 feet; thence,
South 53°54'50" East, a distance of 41.92 feet; thence,
South 36°05'10" West, a distance of 5.00 feet; thence,
South 53°54'50" East, a distance of 193.63 feet; thence,
North 36°05'10" East, a distance of 15.00 feet; thence,
South 53°54'50" East, a distance of 53.29 feet; thence,
North 36°05'10" East, a distance of 30.00 feet; thence,
South 53°54'50" East, a distance of 62.42 feet; thence,
North 36°04'48" East, a distance of 35.24 feet; thence,
South 53°55'12" East, a distance of 43.26 feet; thence,
North 36°04'48" East, a distance of 45.10 feet; thence,
South 53°55'12" East, a distance of 565.65 feet; thence,
North 36°04'48" East, a distance of 51.89 feet; thence,
South 53°53'45" East, a distance of 210.38 feet to a curve concaved to the northeast
having a radius of 11,405.67 feet; thence,
Southeasterly along said curve through a central angle of 2°23'54", an arc distance of
477.42 feet; thence,
North 33°39'55" East, a distance of 37.14 feet; thence,
South 57°01'12" East, a distance of 161.66 feet; thence,
South 57°34'20" East, a distance of 67.53 feet; thence,
South 57°44'03" East, a distance of 185.75 feet; thence,
South 59°13'01" East, a distance of 158.15 feet; thence,
South 59°55'44" East, a distance of 317.19 feet; thence,
South 30°49'20" West, a distance of 43.14 feet; thence,
South 30°49'31" West, a distance of 57.25 feet; thence,
South 59°10'29" East, a distance of 473.28 feet; thence,

North 30°49'31" East, a distance of 5.00 feet; thence,
South 59°10'29" East, a distance of 627.81 feet; thence,
South 30°49'31" West, a distance of 5.00 feet; thence,
South 59°10'29" East, a distance of 2,042.48 feet.

Excepting that portion lying within the land described in a Quitclaim Deed to Trillium enterprises, LLC recorded June 4, 2015 in Document No. 2015-0021991 of Official Records in the County Recorder's Office, County of Santa Cruz, State of California.

The land described contains 158,330 square feet more or less and graphically shown on Exhibit B herein.



EXHIBIT B

CONTROL NOTES

COORDINATES HEREON AND THE BASIS OF BEARINGS ARE DERIVED FROM GPS OBSERVATIONS. LOCAL GPS SURVEY CONTROL COORDINATES ARE AS FOLLOWS:

HPGN CA 04 02 MAJORS TPC 1971
 PID HT3666 PID GU4087

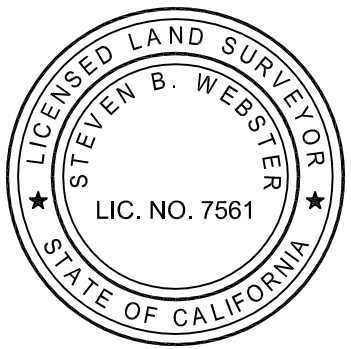
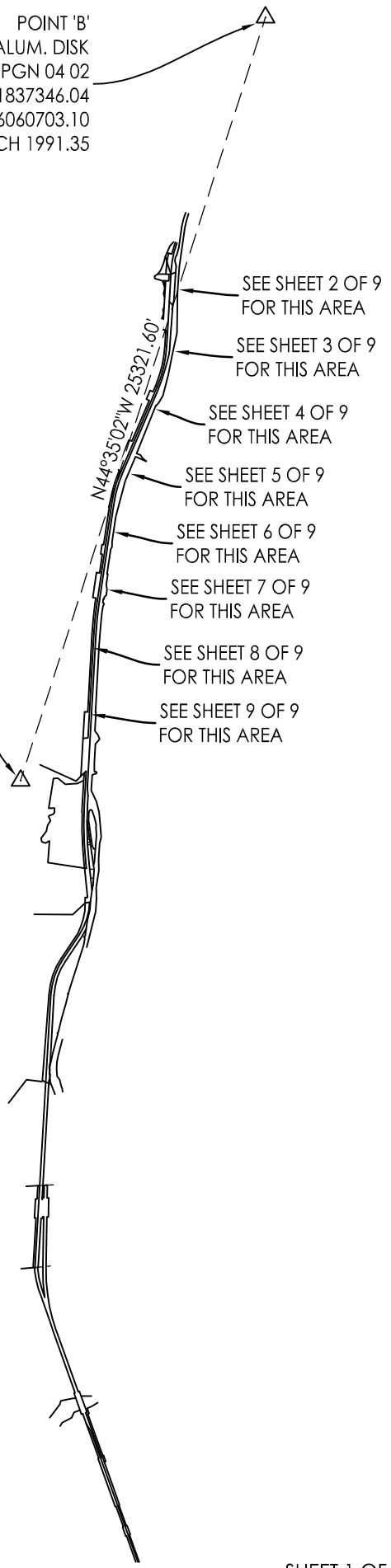
N. 1837346.04 N. 1819311.40
 E. 6060703.10E. 6078477.67

BASIS OF BEARINGS

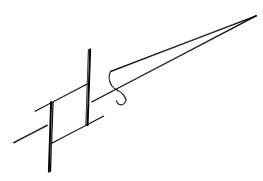
THE BASIS OF BEARINGS FOR THIS SURVEY IS BASED ON STATE PLANE COORDINATES BETWEEN POINT "A" AND POINT "B" HAVING A GRID BEARING OF S44°35'02"E AS SHOWN ON 122 MAPS 35.

POINT 'B'
 FOUND 2.5" ALUM. DISK
 STAMPED HPGN 04 02
 N. 1837346.04
 E. 6060703.10
 NAD83, ZONE 3, EPOCH 1991.35

POINT 'A'
 FOUND 3.5" CORPS OF ENGINEERS BRASS
 DISK STAMPED "MAJORS TPC 1971"
 N. 1819311.40
 E. 6078477.67
 NAD83, ZONE 3, EPOCH 1991.35



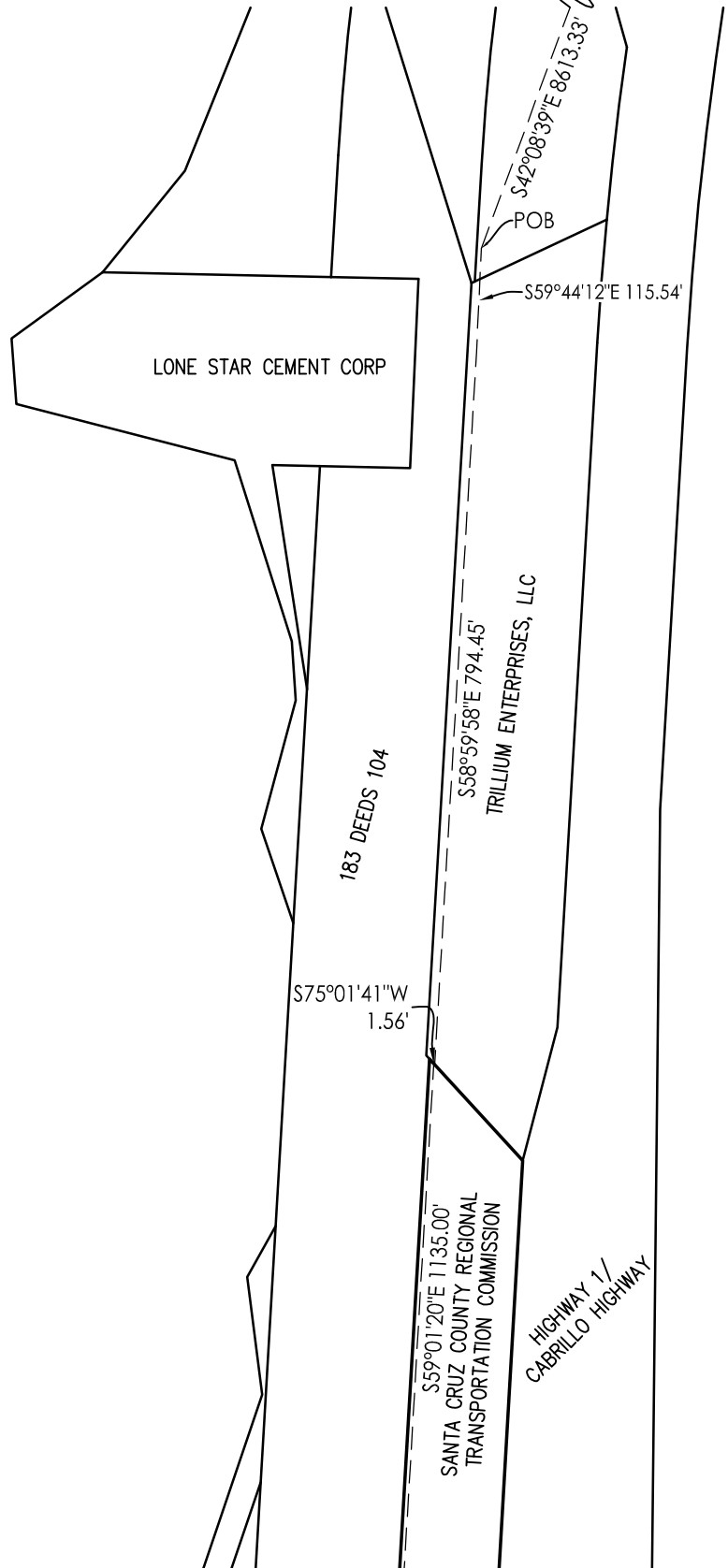
Steven B. Webster



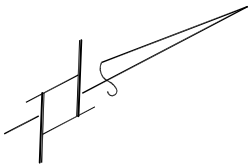
3765 S. Higuera St., Ste. 102 • San Luis Obispo, CA 93401
 p: (805) 543-1794 • f: (805) 543-4609
www.rrmdesign.com

EXHIBIT B

POC
POINT "B"
FOUND 2.5" ALUM. DISK
STAMPED HPGN 04 02
N. 1837346.04
E. 6060703.10
NAD83, ZONE 3, EPOCH 1991.35



Steven B. Webster



SCALE: 1" = 200'



3765 S. Higuera St., Ste. 102 • San Luis Obispo, CA 93401
p: (805) 543-1794 • f: (805) 543-4609

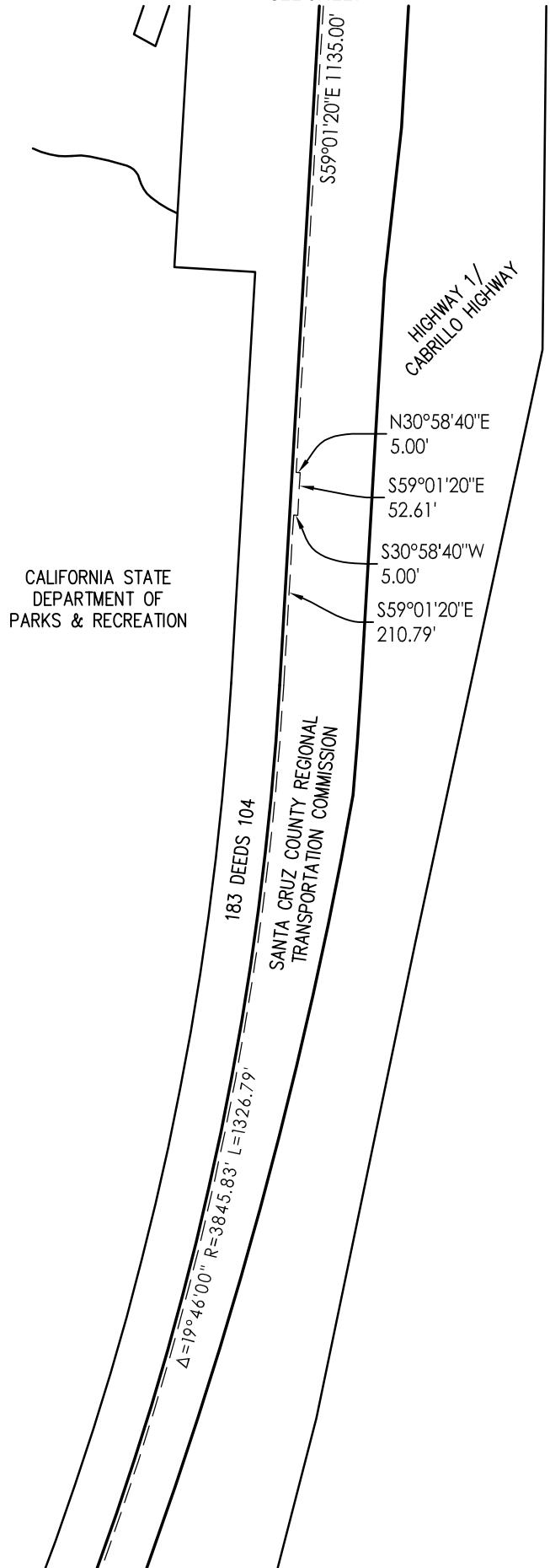
www.rrmdesign.com

SEE SHEET 3

SHEET 2 OF 9

EXHIBIT B

SEE SHEET 2



CALIFORNIA STATE
DEPARTMENT OF
PARKS & RECREATION

HIGHWAY 1/
CABRILLO HIGHWAY

N30°58'40"E
5.00'

S59°01'20"E
52.61'

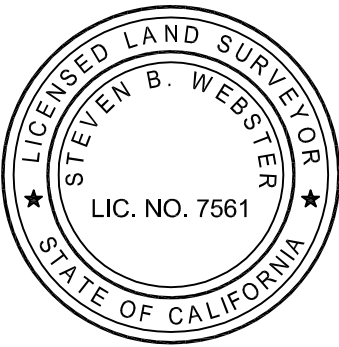
S30°58'40"W
5.00'

S59°01'20"E
210.79'

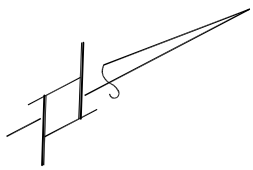
183 DEEDS 104

SANTA CRUZ COUNTY REGIONAL
TRANSPORTATION COMMISSION

$\Delta=19^{\circ}46'00''$ $R=3845.83'$ $L=1326.79'$



Steven B. Webster



SCALE: 1" = 200'

SEE SHEET 4

rrm design group

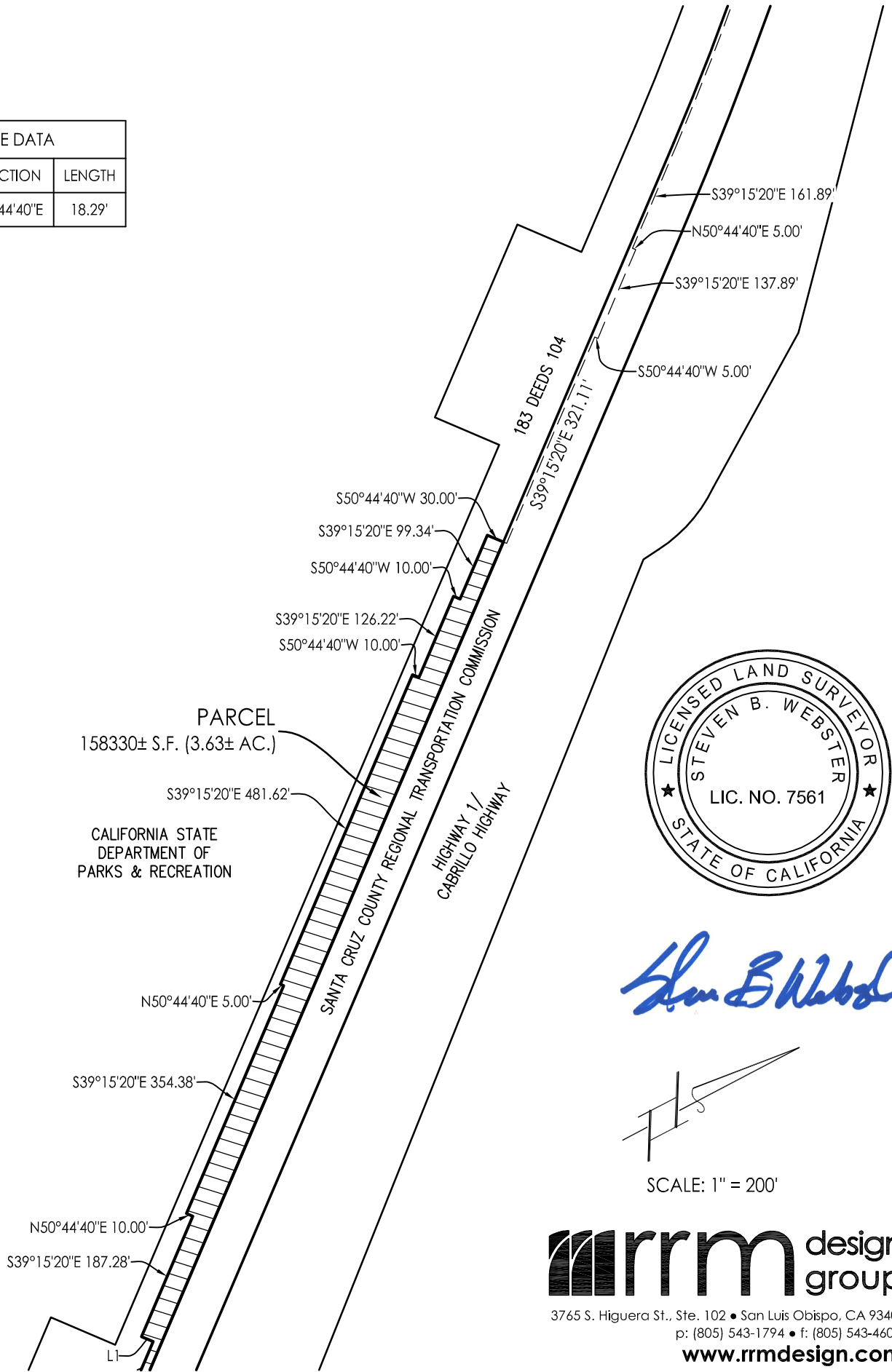
3765 S. Higuera St., Ste. 102 • San Luis Obispo, CA 93401
p: (805) 543-1794 • f: (805) 543-4609

www.rrmdesign.com

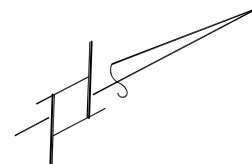
EXHIBIT B

SEE SHEET 3

LINE DATA		
LINE	DIRECTION	LENGTH
L1	N50°44'40"E	18.29'



Steven B. Webster



SCALE: 1" = 200'



3765 S. Higuera St., Ste. 102 • San Luis Obispo, CA 93401
p: (805) 543-1794 • f: (805) 543-4609

www.rrmdesign.com

SEE SHEET 5

EXHIBIT B

LINE DATA		
LINE	DIRECTION	LENGTH
L1	N50°44'40"E	18.29'
L2	S39°15'20"E	81.73'
L3	N50°44'40"E	15.00'
L4	S39°15'20"E	82.59'
L5	N50°44'40"E	10.00'
L6	S39°15'20"E	27.49'
L7	S50°44'40"W	10.00'
L8	S39°15'20"E	118.63'
L9	N50°44'40"E	57.66'
L10	S39°15'45"E	114.57'
L11	S50°44'40"W	30.96'
L12	N39°15'20"W	39.20'
L13	S50°44'40"W	25.00'
L14	S39°15'20"E	99.89'
L15	N50°44'40"E	5.00'
L16	N50°44'40"E	5.00'
L17	S39°15'20"E	182.63'
L18	S50°44'40"W	20.00'

SEE SHEET 4

CALIFORNIA STATE
DEPARTMENT OF
PARKS & RECREATION

183 DEEDS 104

HIGHWAY 1/
CABRILLO HIGHWAY

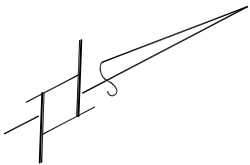
$\Delta=1^{\circ}36'21''$
 $R=3492.02' L=97.87'$
S49°03'12"W 21.57'

$\Delta=3^{\circ}00'53''$
 $R=3502.02' L=184.27'$
S46°02'19"W 10.00'

PARCEL
158330± S.F. (3.63± AC.)

$\Delta=9^{\circ}57'31''$
 $R=3512.02' L=610.42'$

SANTA CRUZ COUNTY REGIONAL TRANSPORTATION COMMISSION



SCALE: 1" = 200'



Steven B. Webster



3765 S. Higuera St., Ste. 102 • San Luis Obispo, CA 93401
p: (805) 543-1794 • f: (805) 543-4609

www.rrmdesign.com

SEE SHEET 6

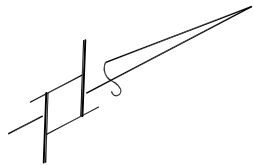
SHEET 5 OF 9

EXHIBIT B

LINE DATA		
LINE	DIRECTION	LENGTH
L19	S36°04'48"W	25.16'
L20	S53°54'50"E	49.60'
L21	S36°05'10"W	20.00'
L22	S53°54'50"E	115.13'
L23	S36°05'10"W	20.00'
L24	S53°54'50"E	54.92'
L25	S36°05'10"W	20.00'
L26	S53°54'50"E	48.83'
L27	S36°05'10"W	15.11'
L28	S53°54'50"E	72.79'



Steven B. Webster



SCALE: 1" = 200'



3765 S. Higuera St., Ste. 102 • San Luis Obispo, CA 93401
 p: (805) 543-1794 • f: (805) 543-4609

www.rrmdesign.com

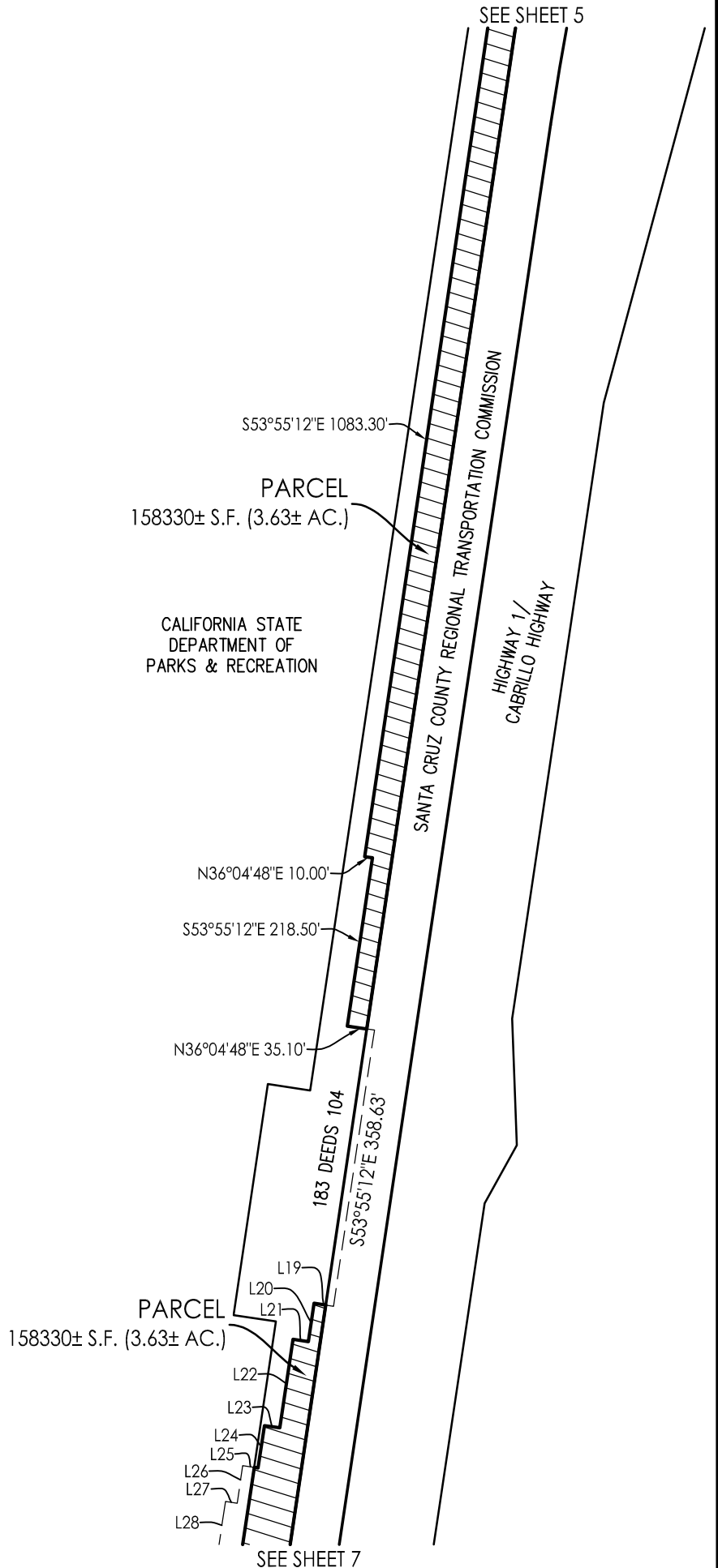
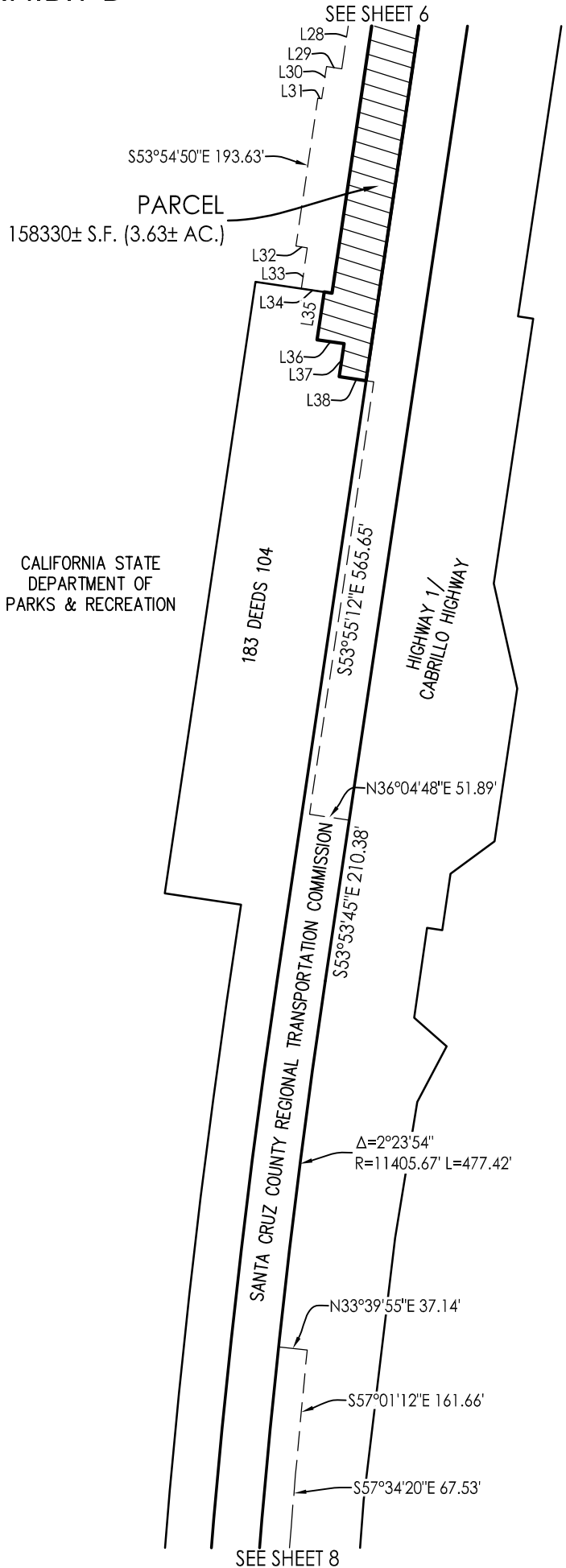


EXHIBIT B

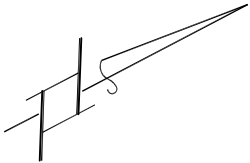
LINE DATA		
LINE	DIRECTION	LENGTH
L28	S53°54'50"E	72.79'
L29	S36°05'10"W	20.00'
L30	S53°54'50"E	41.92'
L31	S36°05'10"W	5.00'
L32	N36°05'10"E	15.00'
L33	S53°54'50"E	53.29'
L34	N36°05'10"E	30.00'
L35	S53°54'50"E	62.42'
L36	N36°04'48"E	35.24'
L37	S53°55'12"E	43.26'
L38	N36°04'48"E	45.10'



CALIFORNIA STATE
DEPARTMENT OF
PARKS & RECREATION



Steven B. Webster



SCALE: 1" = 200'

rrm design group

3765 S. Higuera St., Ste. 102 • San Luis Obispo, CA 93401
p: (805) 543-1794 • f: (805) 543-4609

www.rrmdesign.com

SEE SHEET 8

SHEET 7 OF 9

EXHIBIT B

SEE SHEET 7

S57°44'03"E 185.75'

S59°13'01"E 158.15'

S30°49'31"W 57.25'

S30°49'20"W 43.14'

CALIFORNIA STATE
DEPARTMENT OF
PARKS & RECREATION

183 DEEDS 104

S59°10'29"E 473.28'

N30°49'31"E 5.00'

HIGHWAY 1/
CABRILLO HIGHWAY

S59°10'29"E 627.81'

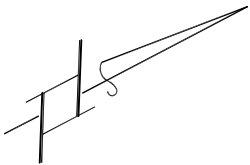
S59°10'29"E 2042.48'

S30°49'31"W 5.00'

SEE SHEET 9



Steven B. Webster



SCALE: 1" = 200'



3765 S. Higuera St., Ste. 102 • San Luis Obispo, CA 93401
p: (805) 543-1794 • f: (805) 543-4609

www.rrmdesign.com

EXHIBIT B

SEE SHEET 8

CALIFORNIA STATE
DEPARTMENT OF
PARKS & RECREATION

183 DEEDS 104

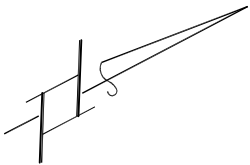
SANTA CRUZ COUNTY REGIONAL
TRANSPORTATION COMMISSION

S59°10'29"E 2042.48'

HIGHWAY 1/
CABRILLO HIGHWAY



Steven B. Webster



SCALE: 1" = 200'



3765 S. Higuera St., Ste. 102 • San Luis Obispo, CA 93401
p: (805) 543-1794 • f: (805) 543-4609

www.rrmdesign.com

EXHIBIT A

That portion of the land described in a Grant Deed to Ocean Shore Railway Company recorded January 2, 1906 in Volume 183 at Page 33 of Official Records in the County Recorder's Office, County of Santa Cruz, State of California, lying **northeasterly** of the line described as follows:

Commencing from Point 'B', being a found 2.5" aluminum disk stamped "HPGN 04 02" as shown on the map filed Volume 122 of Maps at Page 35 in the said County Recorder's Office, said point being North 44°35'02" West, a distance of 25,321.60 feet from Point 'A', being a found 3.5" Corps of Engineers brass disk stamped "MAJOR TPC 1971" as shown on the map filed Volume 122 of Maps at Page 35 in the said County Recorder's Office; thence,

South 51°19'41" East, a distance of 37,563.34 feet to the Point of Beginning; thence,

North 30°59'02" East, a distance of 55.00 feet; thence,

South 59°00'58" East, a distance of 425.80 feet; thence,

North 30°59'02" East, a distance of 15.00 feet; thence,

South 59°00'58" East, a distance of 47.15 feet; thence,

South 30°59'02" West, a distance of 15.00 feet; thence,

South 59°00'58" East, a distance of 63.21 feet; thence,

North 30°59'02" East, a distance of 15.00 feet; thence,

South 59°00'58" East, a distance of 1,993.55 feet; thence,

South 68°44'22" East, a distance of 27.13 feet; thence,

North 23°55'13" East, a distance of 21.14 feet; thence,

South 66°04'47" East, a distance of 65.70 feet; thence,

South 23°55'13" West, a distance of 16.51 feet; thence,

South 70°42'16" East, a distance of 106.81 feet.

The land described contains 4,666 square feet more or less and graphically shown on Exhibit B herein.



EXHIBIT B

CONTROL NOTES

COORDINATES HEREON AND THE BASIS OF BEARINGS ARE DERIVED FROM GPS OBSERVATIONS. LOCAL GPS SURVEY CONTROL COORDINATES ARE AS FOLLOWS:

HPGN CA 04 02 MAJORS TPC 1971
PID HT3666 PID GU4087

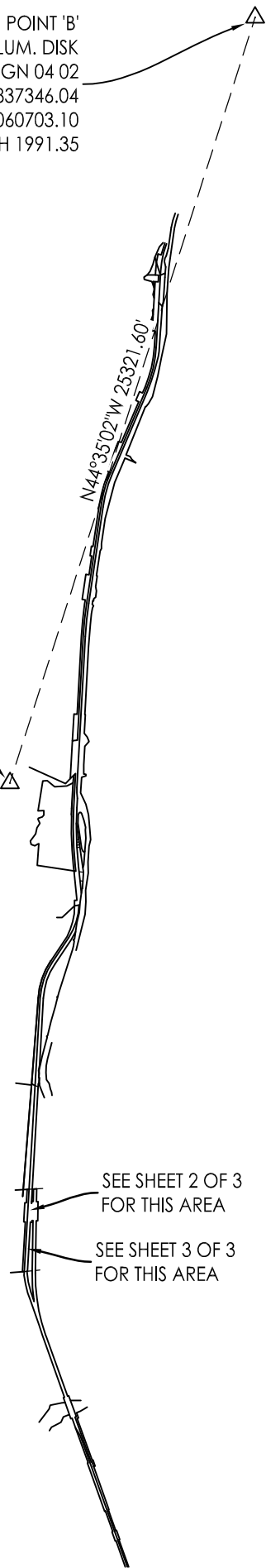
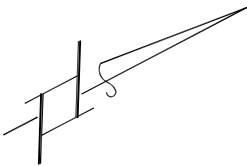
N. 1837346.04 N. 1819311.40
E. 6060703.10E. 6078477.67

BASIS OF BEARINGS

THE BASIS OF BEARINGS FOR THIS SURVEY IS BASED ON STATE PLANE COORDINATES BETWEEN POINT "A" AND POINT "B" HAVING A GRID BEARING OF $S44^{\circ}35'02''E$ AS SHOWN ON 122 MAPS 35.

POINT 'B'
FOUND 2.5" ALUM. DISK
STAMPED HPGN 04 02
N. 1837346.04
E. 6060703.10
NAD83, ZONE 3, EPOCH 1991.35

POINT 'A'
FOUND 3.5" CORPS OF ENGINEERS BRASS
DISK STAMPED "MAJORS TPC 1971"
N. 1819311.40
E. 6078477.67
NAD83, ZONE 3, EPOCH 1991.35



SEE SHEET 2 OF 3
FOR THIS AREA

SEE SHEET 3 OF 3
FOR THIS AREA



3765 S. Higuera St., Ste. 102 • San Luis Obispo, CA 93401
p: (805) 543-1794 • f: (805) 543-4609

www.rrmdesign.com

EXHIBIT B

LINE DATA		
LINE	DIRECTION	LENGTH
L1	N30°59'02"E	55.00'
L2	N30°59'02"E	15.00'
L3	S59°00'58"E	47.15'
L4	S30°59'02"W	15.00'
L5	S59°00'58"E	63.21'
L6	N30°59'02"E	15.00'

POC
POINT "B"
FOUND 2.5" ALUM. DISK
STAMPED HPGN 04 02
N. 1837346.04
E. 6060703.10
NAD83, ZONE 3, EPOCH 1991.35

CALIFORNIA STATE
DEPARTMENT OF
PARKS & RECREATION

POB L1

PARCEL
4666± S.F. (0.11± AC.)

CALIFORNIA STATE
DEPARTMENT OF
PARKS & RECREATION

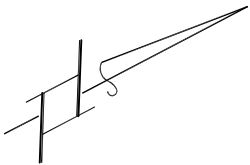
183 DEEDS 33

SANTA CRUZ COUNTY REGIONAL TRANSPORTATION COMMISSION

CALIFORNIA STATE
DEPARTMENT OF
PARKS & RECREATION



Steven B. Webster



SCALE: 1" = 200'

rrm design group

3765 S. Higuera St., Ste. 102 • San Luis Obispo, CA 93401
p: (805) 543-1794 • f: (805) 543-4609

www.rrmdesign.com

SEE SHEET 3

EXHIBIT B

SEE SHEET 2

LINE DATA		
LINE	DIRECTION	LENGTH
L7	S68°44'22"E	27.13'
L8	N23°55'13"E	21.14'
L9	S66°04'47"E	65.70'
L10	S23°55'13"W	16.51'
L11	S70°42'16"E	106.81'

CALIFORNIA STATE
DEPARTMENT OF
PARKS & RECREATION

183 DEEDS 33

S59°00'58"E 1993.55'

SANTA CRUZ COUNTY REGIONAL TRANSPORTATION COMMISSION

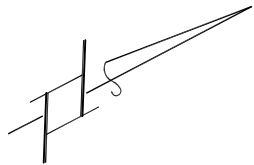
CALIFORNIA
STATE
DEPARTMENT OF
PARKS & RECREATION

SANTA CRUZ COUNTY REGIONAL TRANSPORTATION COMMISSION

CALIFORNIA STATE
DEPARTMENT OF
PARKS & RECREATION



Steven B. Webster



SCALE: 1" = 200'



3765 S. Higuera St., Ste. 102 • San Luis Obispo, CA 93401
p: (805) 543-1794 • f: (805) 543-4609

www.rrmdesign.com