

SLV SCHOOLS COMPLEX  
▶▶▶ ACCESS STUDY



# Draft Concepts for the SLV Schools Access Study

## Community Workshop

Thursday, November 3, 2022

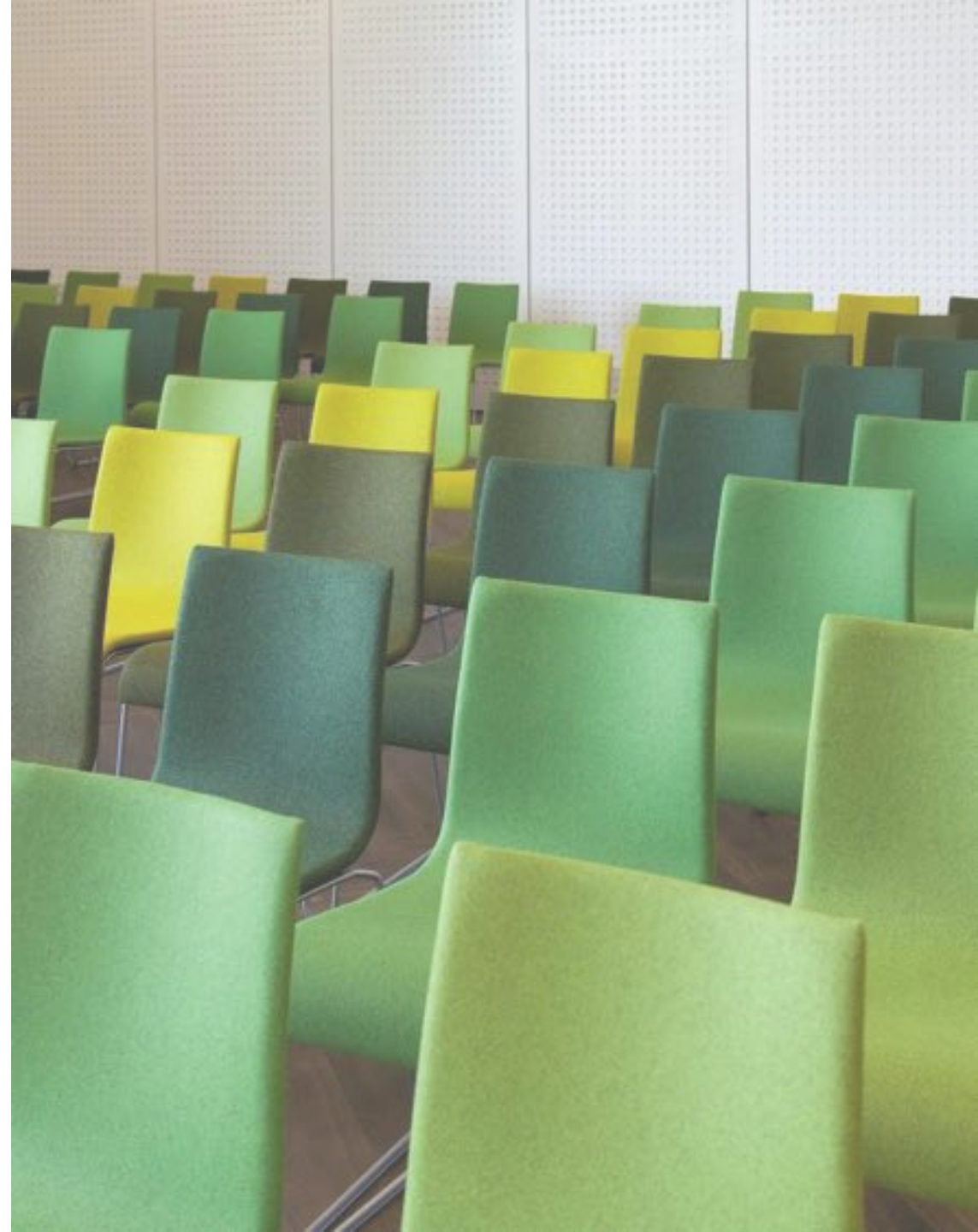
6:00 – 7:30 PM





# Agenda

- Project Background
- Public Engagement
- Engineering Concepts
- Phasing Plan
- Collaboration
- Next Steps and Action Items



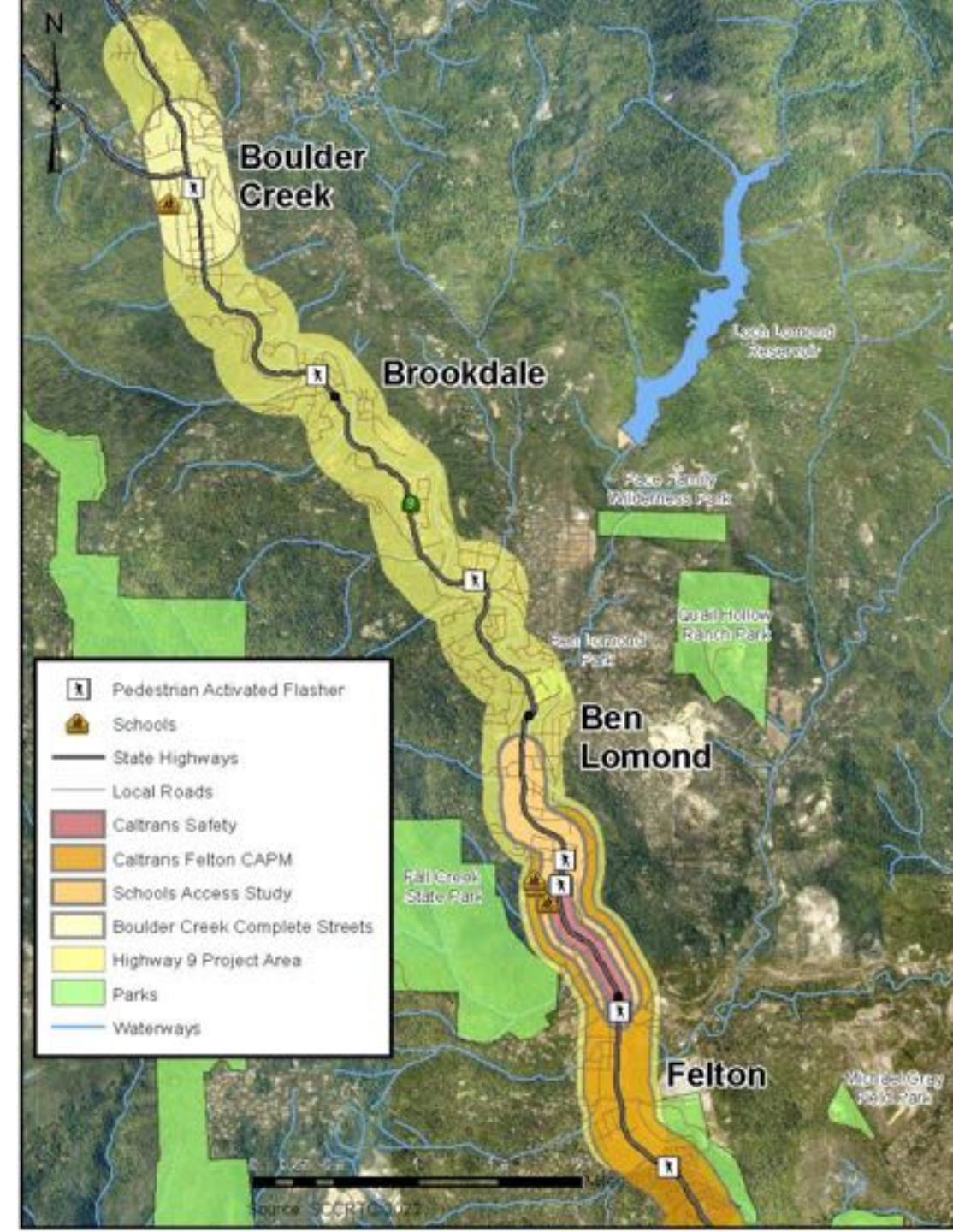
# Project Background and Goals – 2019 Plan

The 2019 Highway 9/San Lorenzo Valley Complete Streets Corridor Plan (SLV Plan) goals included:

- Enhance safety for all users along Highway 9 and connecting county roads
- Improve bike and pedestrian access to and within town centers and schools
- Improve multimodal transit access

The SLV Plan included extensive input between 2017 & 2019 including:

- Surveys
- Focus group meetings
- Public meetings





# Project Background and Goals – School Study

The SLV Schools Access Study will:

- Build upon projects 9, 10, 11, and 12 in the SLV Plan
- Review traffic operations at 3 schools:
  - SLV High School
  - SLV Middle School
  - SLV Elementary School
- Identify improvements for school access by walking, bicycling, transit, and car between the southern intersection of Glen Arbor and Graham Hill Road.
- Evaluate potential improvements to school circulation and parking.
- Improve traffic flow along Highway 9 for non-school traffic.





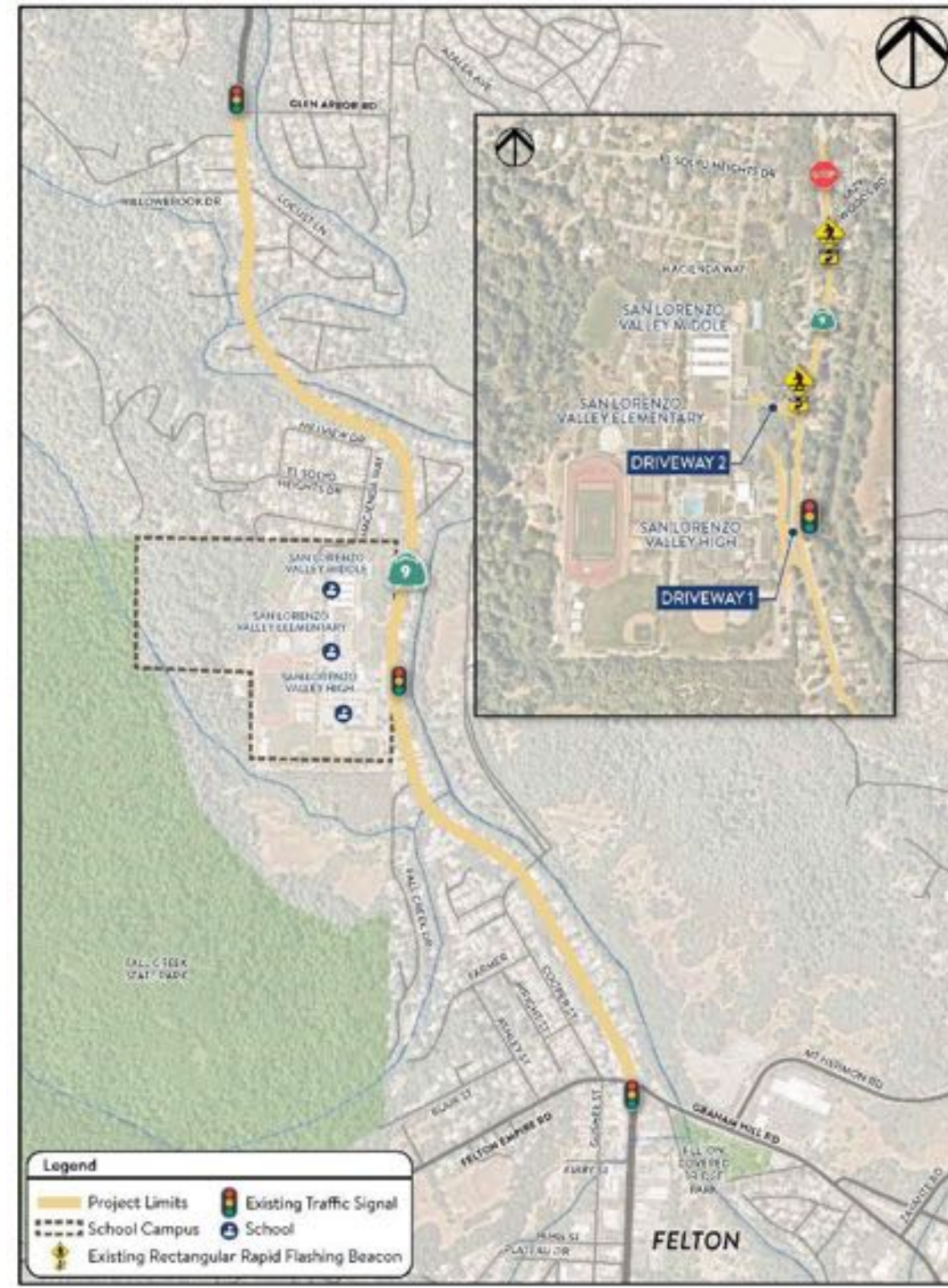
# Project Background and Goals

The SLV Schools Access Study area includes:

- Highway 9 between the south intersection with Glen Arbor Road and Graham Hill Road (Caltrans Post Mile (PM) 6.46 to 8.11)
- Site access and circulation at the three SLV schools.

The SLV Schools Access Study will:

- Collaborate with Caltrans staff
- Account for Caltrans plans for west side sidewalk between schools and Felton (05-1M400 Safety Project)
- Coordinate potential improvements at the Schools Complex with Caltrans projects



# Recent Public Engagement Activities

- Elementary School Input
  - May 23, 2022
  - 113 Student Participants
- Middle/High School Survey
  - May 17 to June 1, 2022
  - 105 Student/Parent Participants
- School Staff Survey
  - May 25 to June 5, 2022
  - 21 Staff Participants
- Public Survey
  - May 25 to June 30, 2022
  - 201 Participants

1

Did you participate in the 2017-2019 community engagement activities associated with development of the SLV Plan?

9

Highway 9  
San Lorenzo Valley  
Complete Streets  
Corridor Plan





☐ Yes

☐ No

☐ Unsure

## Challenges

Please tell us about challenges you have observed; such as compliance with rules, bottlenecks, safety hazards, etc.

2. What are the challenges related to school circulation and access for **personal cars**?

Enter your answer

3. What are the challenges related to school circulation and access for **bicycles**?

Enter your answer



# Recent Engagement Feedback

- Response concerns received:
  1. Need improved access between Highway 9 and SLV school campuses;
  2. Lack of walking and bicycling facilities;
  3. Congestion during student pick-up and drop-off.
- Some favored policies and solutions:
  1. Sidewalks on Highway 9 from the South (Felton);
  2. Right-turn pockets on Highway 9 into school entrances;
  3. Shoulder improvements for bicycling on Highway 9 from the South (Felton).





# Recent Engagement Feedback

- SLV parents support additional bus service and enhancing stop amenities.
- Students are interested in enhancing walking and bicycling near campus.
- Staff are interested in separation between bus/transit vehicles and passenger vehicles.
- Dedicated space for walking and bicycling is highly favored.



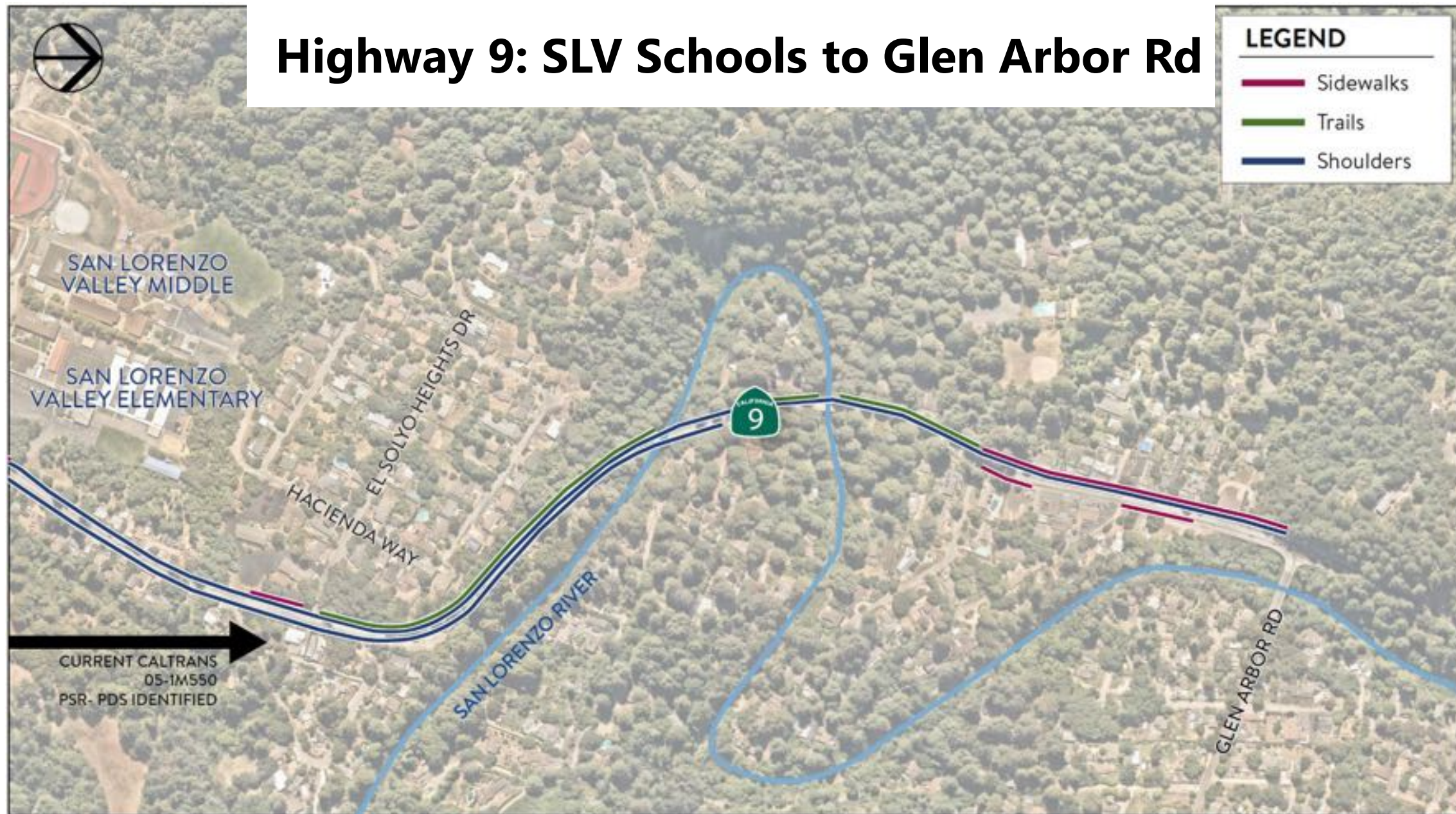


# Highway 9: Graham Hill Rd to SLV Schools





# Highway 9: SLV Schools to Glen Arbor Rd





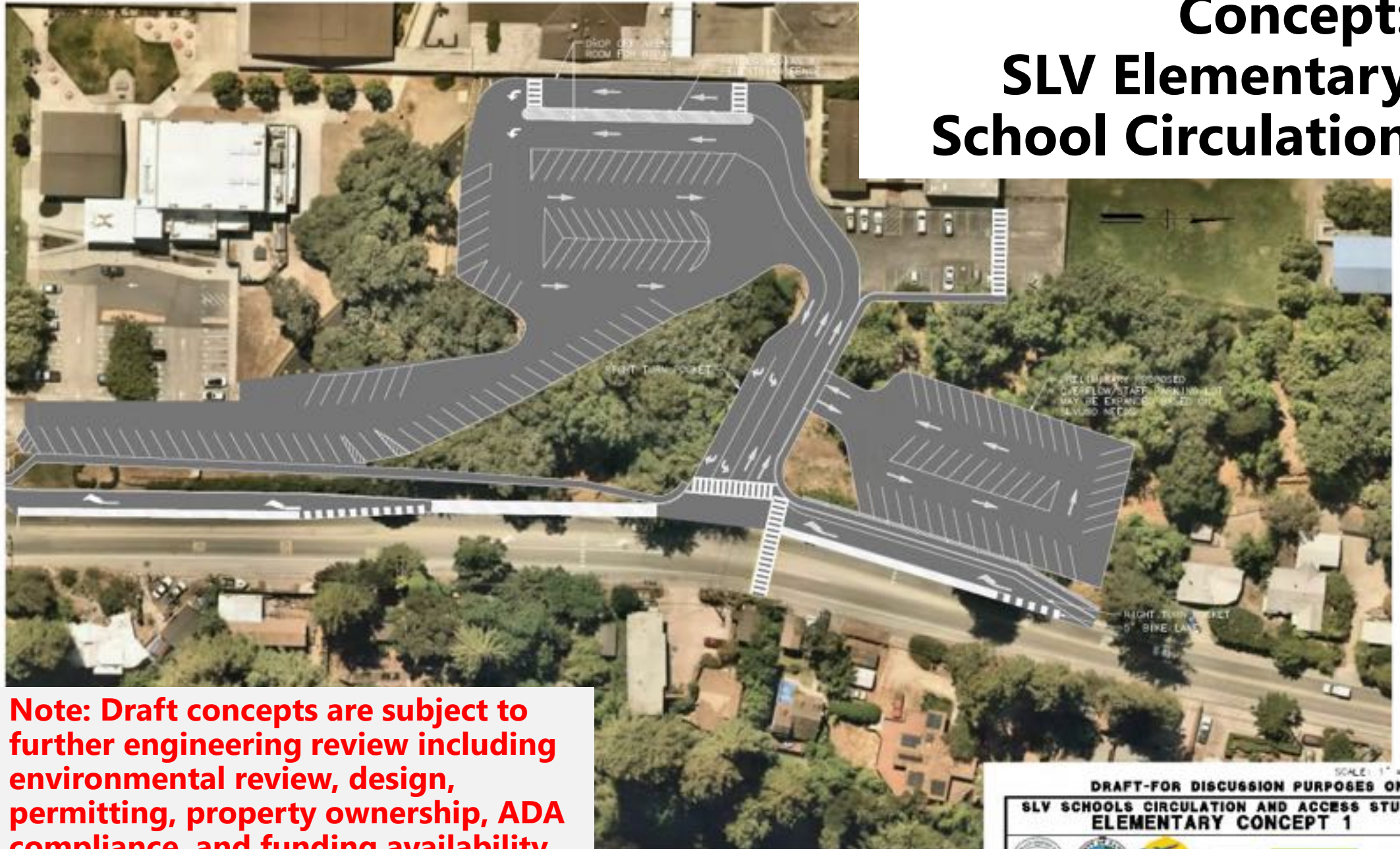
## Concept: SLV Middle School Circulation

**Note: Draft concepts are subject to further engineering review including environmental review, design, permitting, property ownership, ADA compliance, and funding availability.**





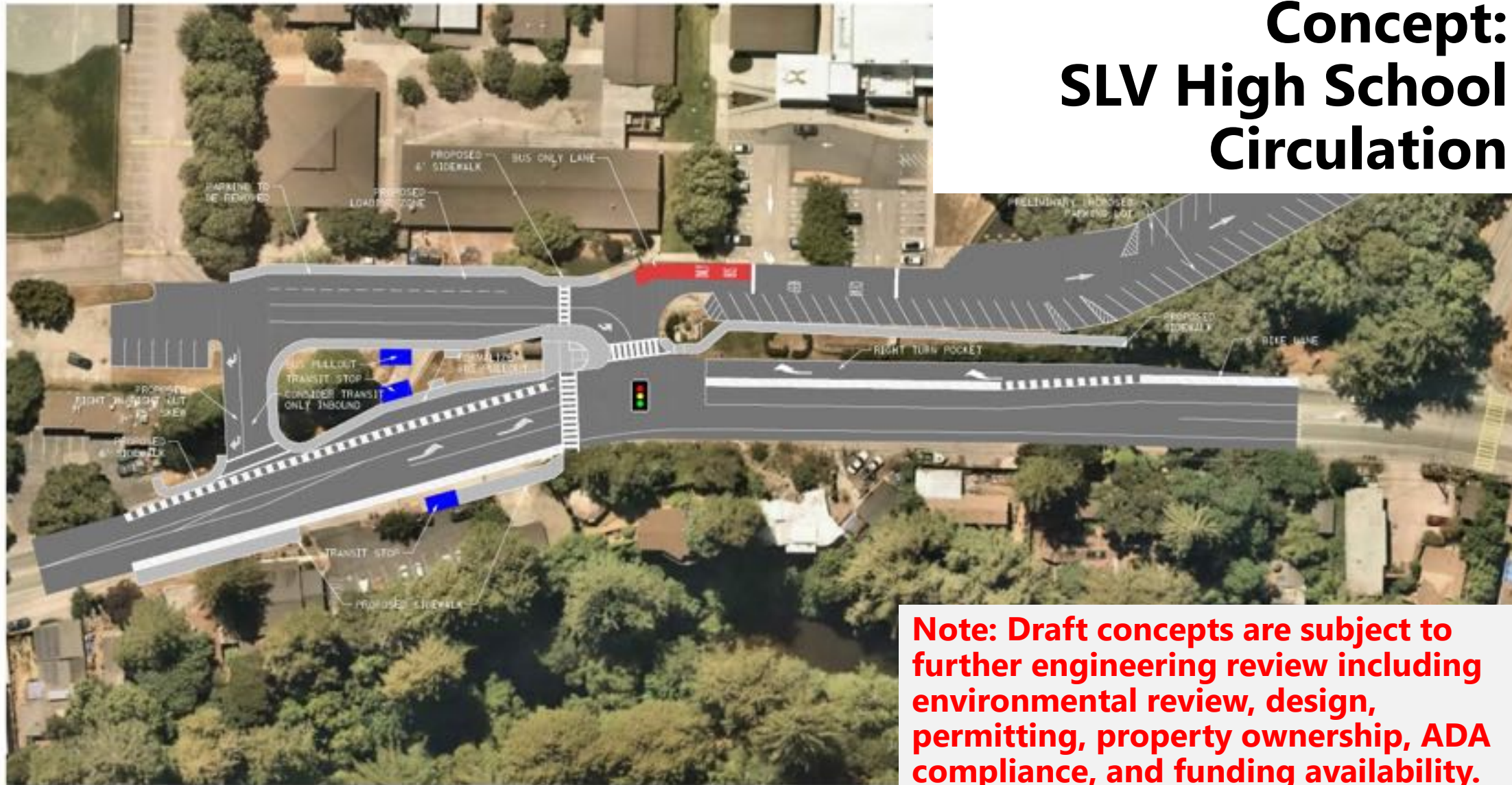
# Concept: SLV Elementary School Circulation



**Note: Draft concepts are subject to further engineering review including environmental review, design, permitting, property ownership, ADA compliance, and funding availability.**



# Concept: SLV High School Circulation



**Note: Draft concepts are subject to further engineering review including environmental review, design, permitting, property ownership, ADA compliance, and funding availability.**

SCALE: 1" = 30'

**DRAFT-FOR DISCUSSION PURPOSES ONLY**

**SLV SCHOOLS CIRCULATION AND ACCESS STUDY  
HIGH SCHOOL CONCEPT 1C**





# Challenges to Implementation

- All concepts shown are graphic in nature and do not represent approved project or commitment of funds
- Implementation requires additional engineering work including:
  - Environmental Review
  - Permitting
  - Right-of-Way and Property Ownership
  - Preliminary & Final Design
  - ADA Compliance
- Implementation requires availability of yet to be identified grant or local funding





# Key Design Features: Universal Accessibility

- Mobility recommendations focused on serving people of all ages and abilities.
  - Youth and Older Adults
  - People with Disabilities
  - People with Strollers
- Recommended Design Features
  - ADA Ramps
  - Connection to Transit Stops
  - Uninterrupted Routes





# Schedule and Phasing Plan

- Draft Schedule to Advance Concepts
  - Near Term,
  - Medium Term, or
  - Long Term.
- Identify lead agency/organization
- Identify opportunities where engineering solutions can be bundled with existing roadwork programming.

## *Phasing Plan Elements:*

Schedule

Estimated Total Project Costs

Cost by Project Phase

Cost by Year

Potential Funding Sources



# Collaborative Funding Pursuits

- Partner agency & public collaboration positions for competitive grant pursuits.
- Joint participation between multiple agencies increases likelihood of funding award through demonstration of:
  - Agency collaboration,
  - Diverse community support,
  - Pooled match funding.

## *Project Partner Agencies/Stakeholders:*

**Santa Cruz  
Regional  
Transportation  
Commission**

RTC



**San Lorenzo  
Valley Unified  
School District**

SLVUSD



**County of  
Santa Cruz**

DWP



**Santa Cruz  
Metropolitan  
Transportation  
District**

METRO



**California  
Department of  
Transportation**

Caltrans



**San Lorenzo  
Valley  
Community**

Public





# Next Steps and Action Items

1. Advance Engineering Concepts
2. Refine Concepts with Project Partners
3. Continue Stakeholder Presentations
4. Solicit Input from School/Community Stakeholders
5. Prepare Schedule and Phasing Plan
6. Finalize Summary Report
7. Pursue Grant Funding



# Questions?

SCCRTC Contact: Brianna Goodman  
[slvprogram@sccrtc.org](mailto:slvprogram@sccrtc.org)

Mark Thomas Contact: Paul Martin

