



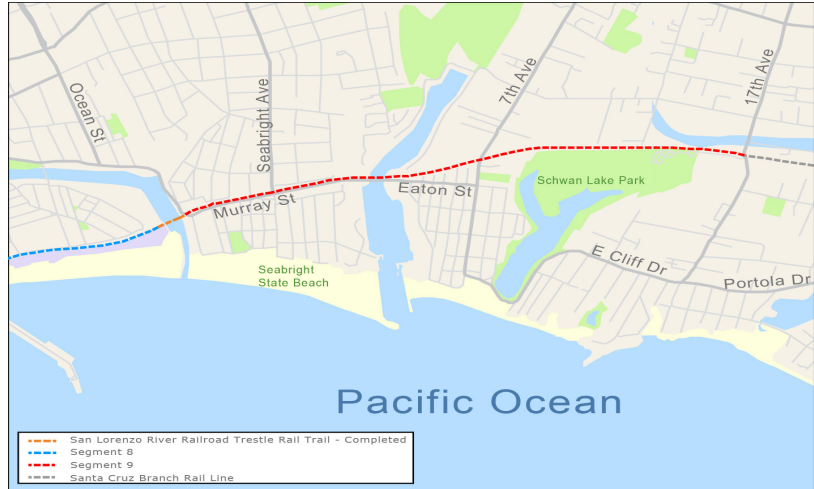
# Active Transportation: Coastal Rail Trail Segments 8 & 9

## Project Description

The Coastal Rail Trail Segments 8 and 9 project (as defined in the Monterey Bay Sanctuary Scenic Trail {MBSST} Network Master Plan) includes 2.2 miles of the MBSST's rail trail spine between Pacific Street in the City of Santa Cruz and 17th Avenue in the unincorporated area of Santa Cruz County along the publicly-owned railroad right-of-way.

The goals of this project are to increase the numbers of people biking and walking, improve safety and mobility of non-motorized users, and provide high-quality connections to schools, parks, and community facilities. When constructed, this project will be part of a planned 32-mile rail trail network that traverses the entire coastline of Santa Cruz County. A part of the Segment 8 project, the San Lorenzo River Railroad Trestle trail widening, was accelerated ahead of the rest of the segment and was completed in 2019.

Segments 8 and 9 are particularly challenging due to three new bridges and four at-grade crossings.



## Project Highlights

- ▶ Provides a dedicated bike/ped trail, improving safety and connectivity to schools and employment centers
- ▶ Connects to the Beach Street bikeway and Segment 7, connecting the west and east sides of Santa Cruz
- ▶ Includes a new bike/ped bridge at Rodeo Gulch
- ▶ Includes either a separate multi-use bike/ped structure or a 10' multi-use path across the Santa Cruz Harbor, cantilevered off the Harbor rail bridge
- ▶ Connects to downtown Santa Cruz via the San Lorenzo River levee trails
- ▶ Provides a 10' multi-use path across the San Lorenzo River (completed in 2019)
- ▶ Extends through the Seabright neighborhood to Live Oak
- ▶ 48,000 residents live within 1 mile of the corridor, where 15 schools and 37 parks are located

## Project Delivery Strategy

The City of Santa Cruz is advancing the environmental and design phases of the project. The City advanced construction of the multi-use path across the San Lorenzo River with an innovative approach, cantilevering off the existing rail trestle with a system that used lightweight decking. The project is fully funded through a combination of Measure D-Regional Active Transportation Funds, State Active Transportation Program funds, and funding from the Land Trust of Santa Cruz County.



# Active Transportation: Coastal Rail Trail Segments 8 & 9

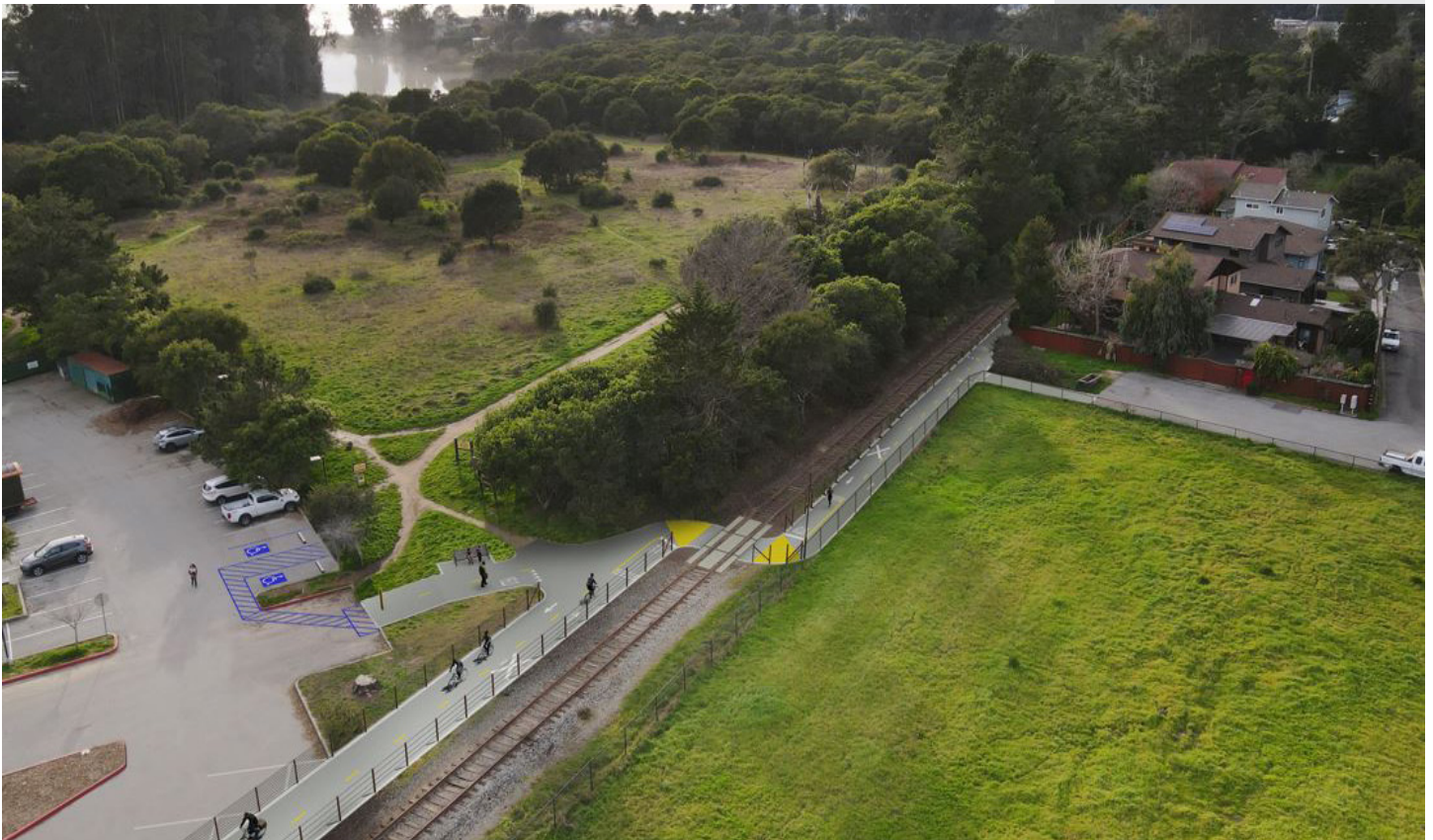
## Total Programming

Funding Sources	
Measure D (Active Transportation)	\$2.9M
Measure D (Local Neighborhood)	\$4.2M
State Active Transportation Program	\$35.7M
Other Secured*	\$5.4M
Need	\$0
<b>Total Funding</b>	<b>\$48.2M</b>

\*Includes TDA, ATP, and Land Trust funds.

## Project Schedule

The multi-use path cantilevered off the San Lorenzo River Railroad Trestle was completed in 2019. Preliminary engineering and environmental review will be complete in 2023. Final design is scheduled for completion in 2024 and the project is scheduled to go to construction in 2025.



Preliminary project rendering