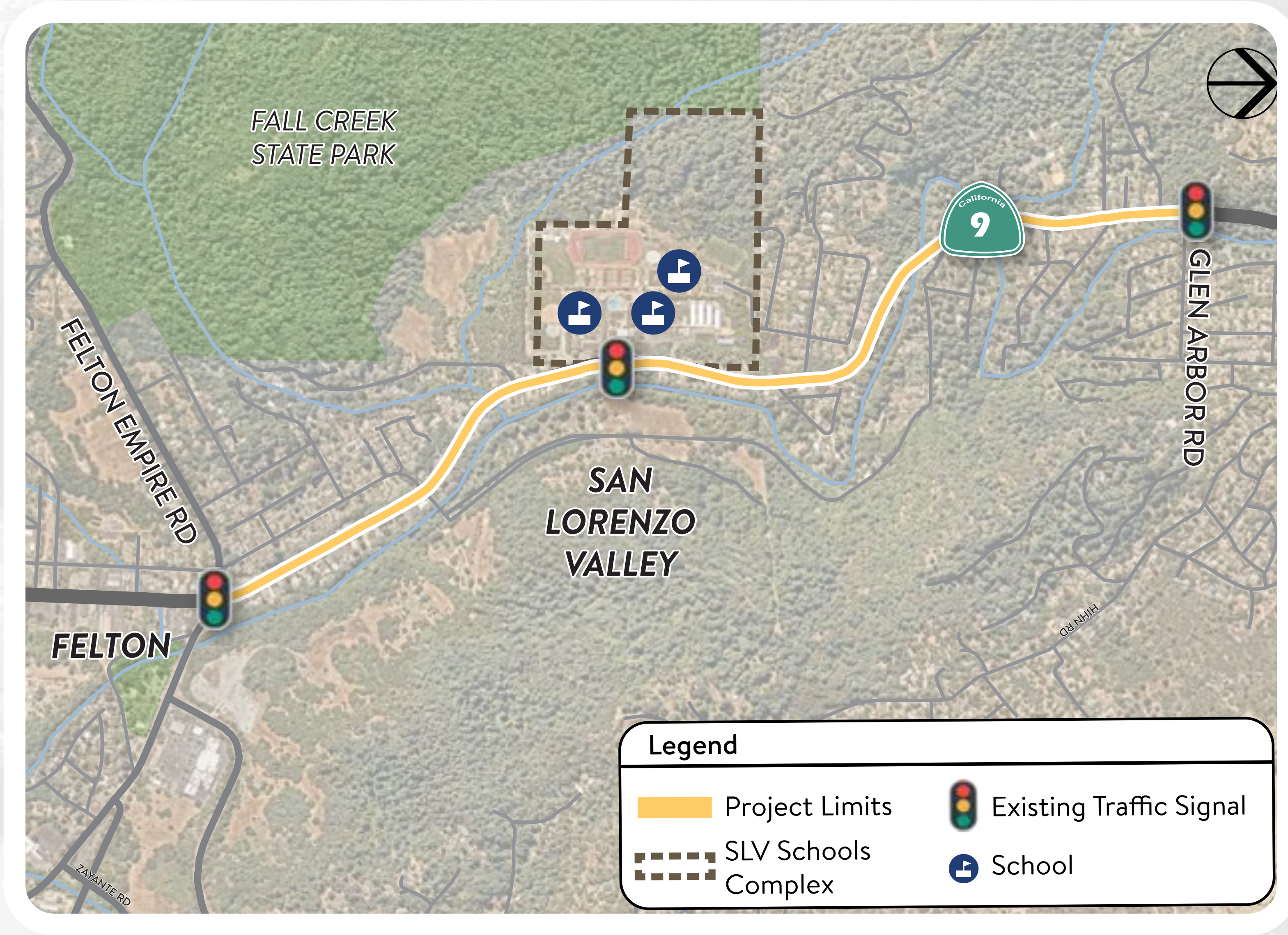


WELCOME



**MARK
THOMAS**

PROJECT OVERVIEW



PROJECT LIMITS

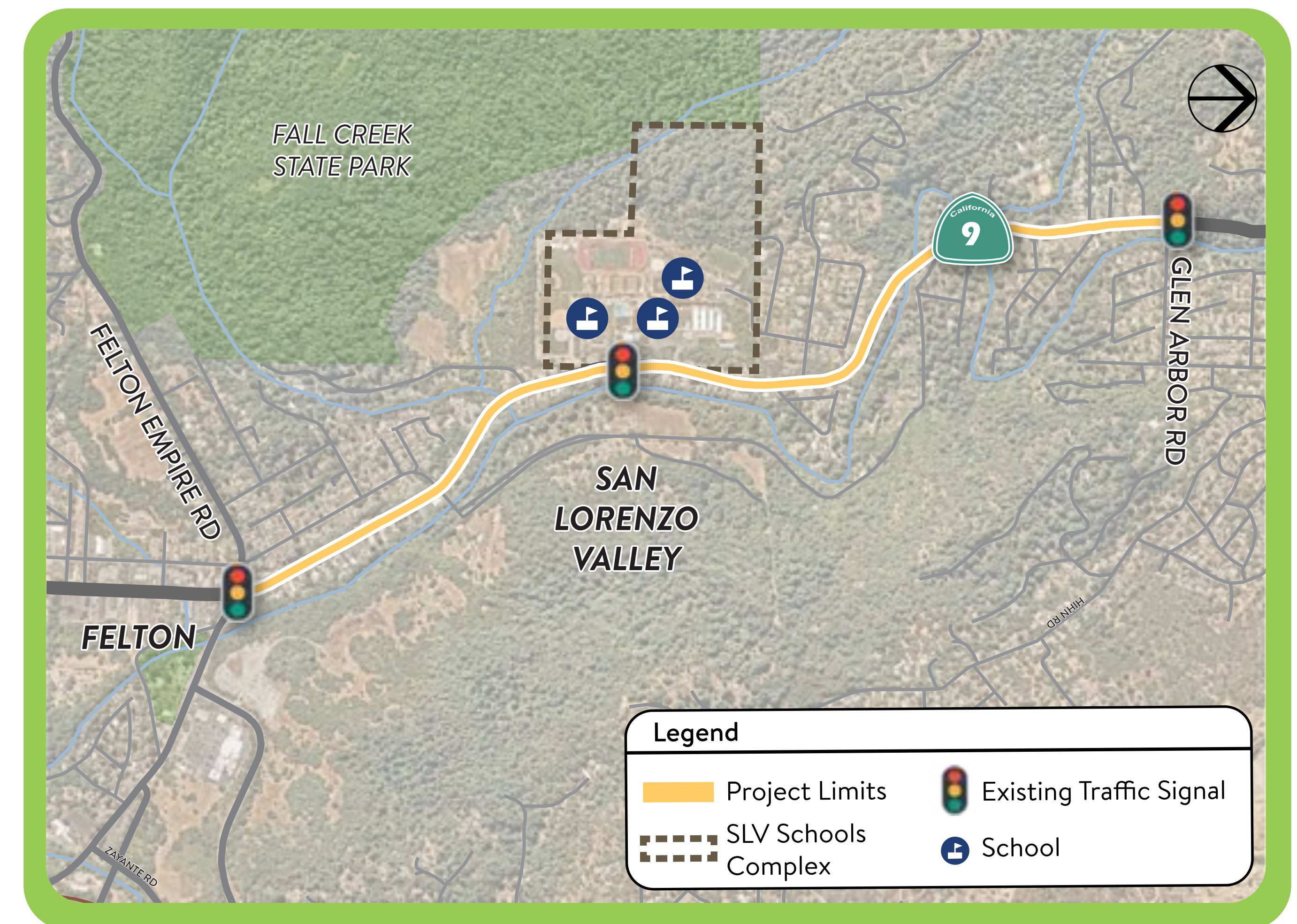
The SLV Schools Access Project includes Highway 9 between Glen Arbor and Graham Hill Road, and access to/from SLV Elementary, Middle, and High Schools (SLV Schools)

PROJECT DESCRIPTION

The project will build upon the 2019 Highway 9/San Lorenzo Valley Complete Streets Corridor Plan, and aims to improve access by walking, bicycling, transit, and car. In addition to improving circulation into and within the SLV Schools, the project will look to improve traffic flow along Highway 9 for non-school traffic.

PROJECT BENEFITS

Project benefits may include, but are not limited to: safety improvements, reduced traffic congestion, and enhanced travel for transit riders, pedestrians, bicyclists, wheelchairs, and other mobility devices, expanding universal access for Americans with disabilities.

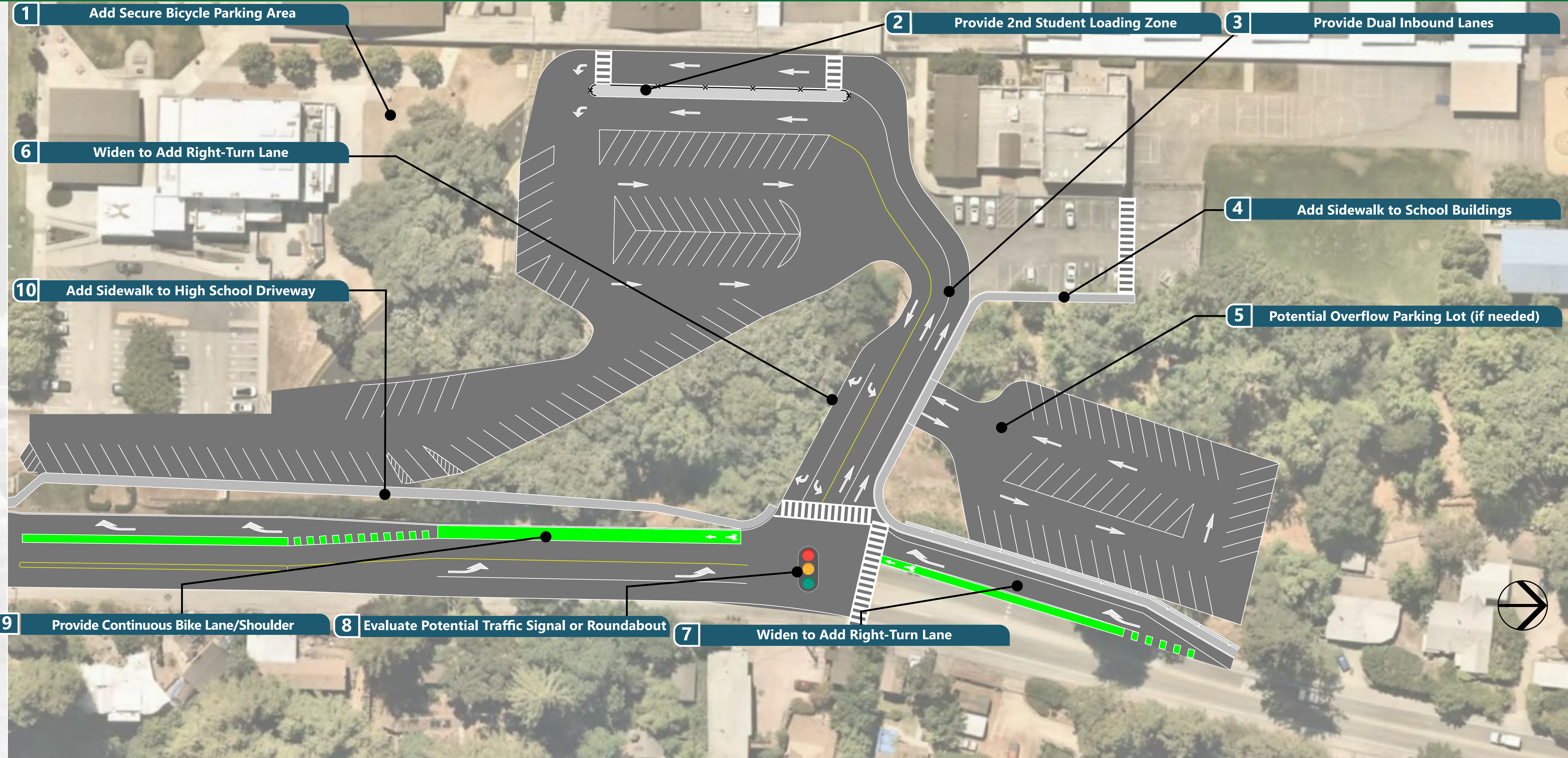


PHASE	2022			2023
	SPRING	SUMMER	FALL	WINTER
Public Engagement				
Existing Conditions				
Needs Analysis				
Engineering Concepts				
Next Steps				
Summary Report				



**MARK
THOMAS**

SLV ELEMENTARY SCHOOL

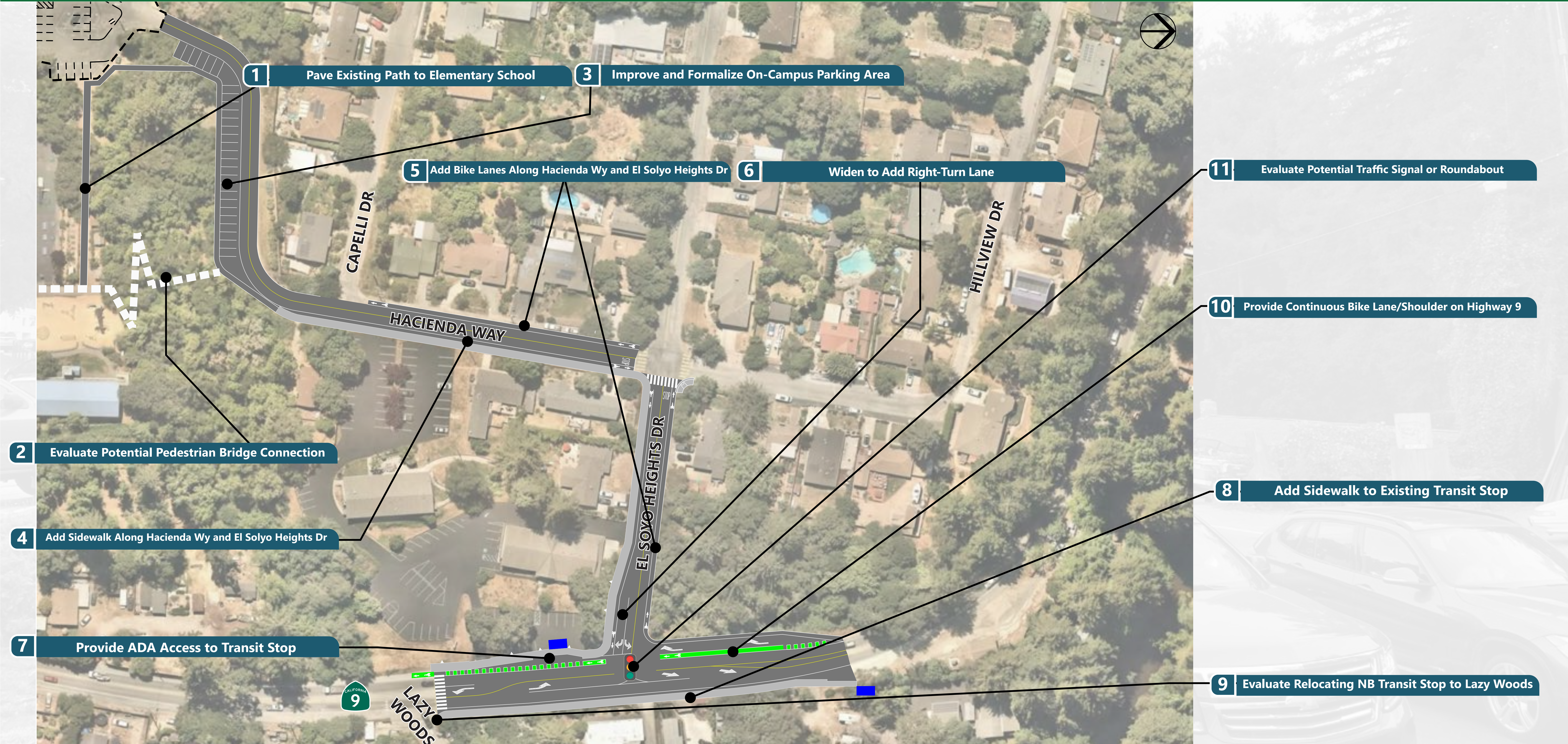


Draft concepts are subject to change based on subsequent environmental review, engineering design, permitting, property ownership review, and funding availability. Potential traffic signal or roundabout subject to traffic study in future design phase per Caltrans requirements.



**MARK
THOMAS**

SLV MIDDLE SCHOOL

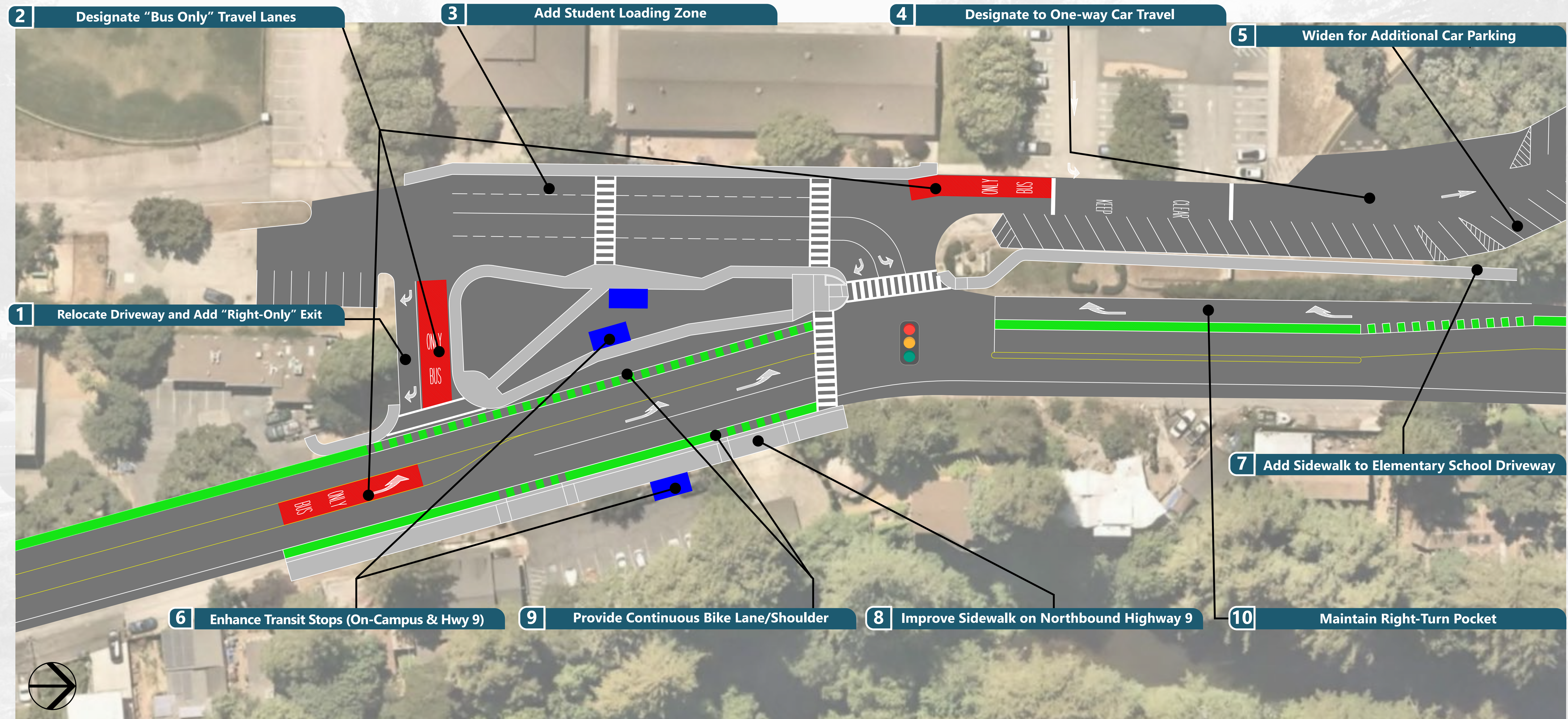


Draft concepts are subject to change based on subsequent environmental review, engineering design, permitting, property ownership review, and funding availability. Potential traffic signal or roundabout subject to traffic study in future design phase per Caltrans requirements.



**MARK
THOMAS**

SLV HIGH SCHOOL

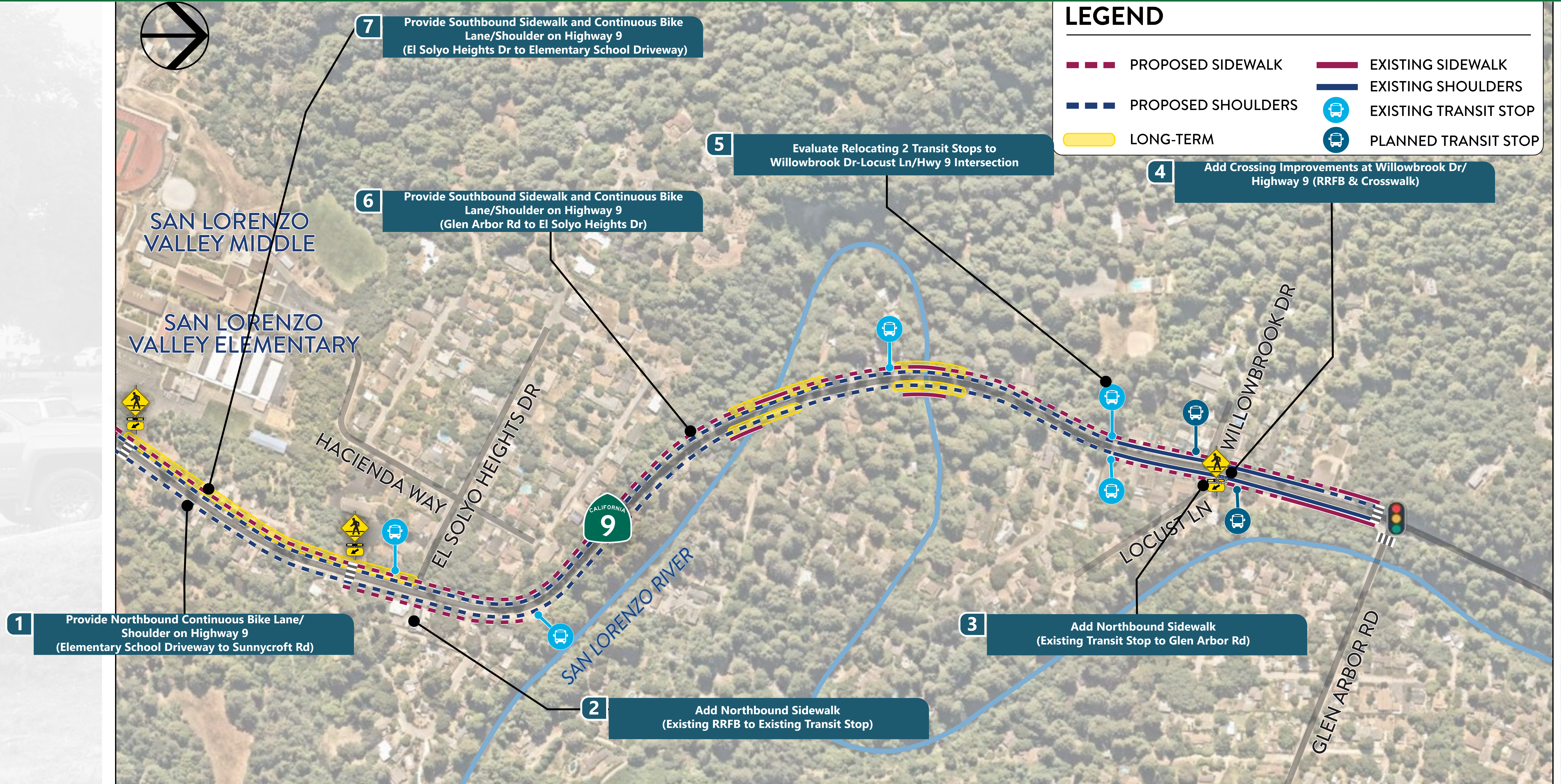


Draft concepts are subject to change based on subsequent environmental review, engineering design, permitting, property ownership review, and funding availability. Potential traffic signal or roundabout subject to traffic study in future design phase per Caltrans requirements.



**MARK
THOMAS**

HIGHWAY 9 NORTH

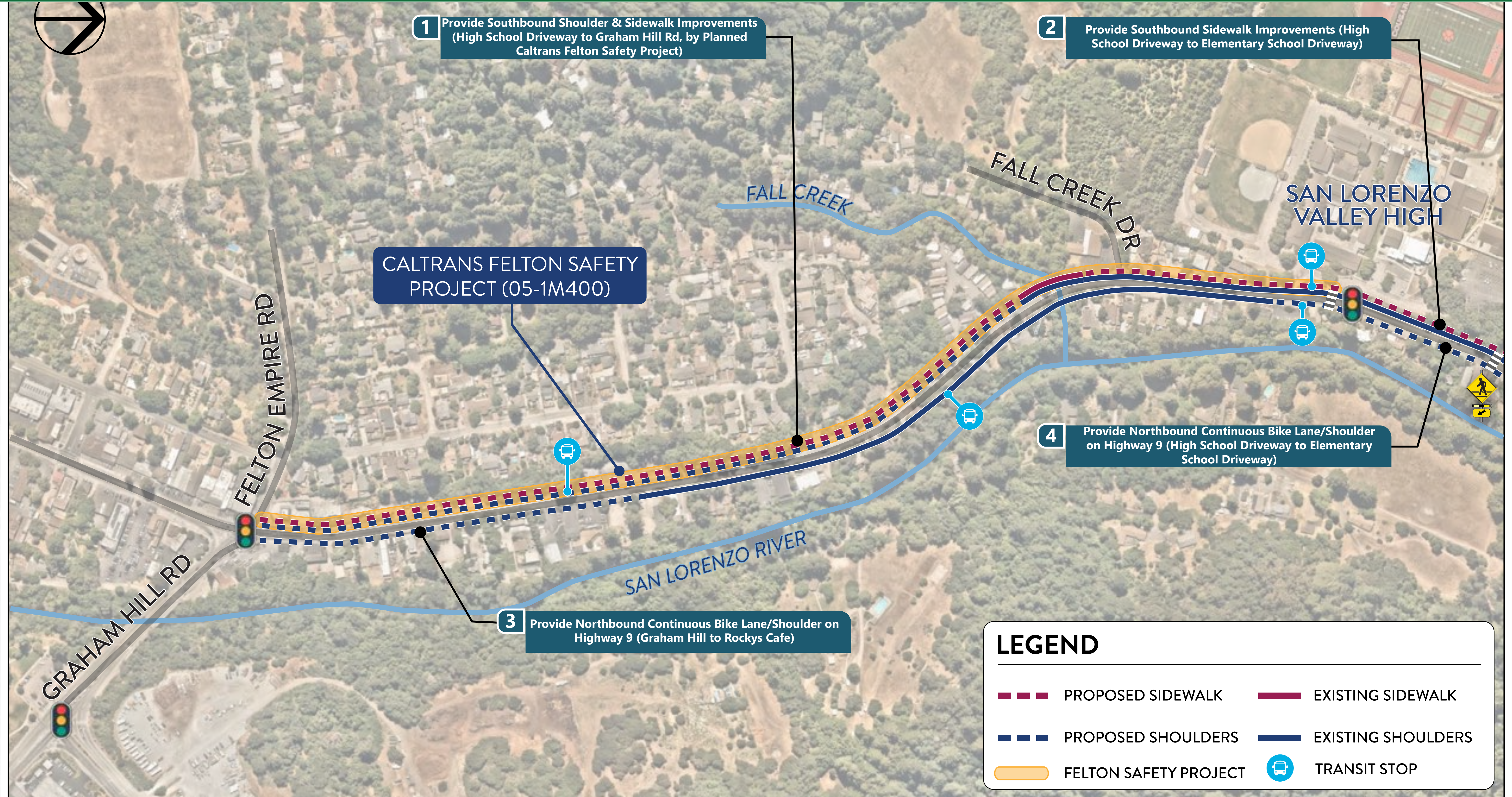


Draft concepts are subject to change based on subsequent environmental review, engineering design, permitting, property ownership review, and funding availability. Potential traffic signal or roundabout subject to traffic study in future design phase per Caltrans requirements.



MARK THOMAS

HIGHWAY 9 SOUTH



Draft concepts are subject to change based on subsequent environmental review, engineering design, permitting, property ownership review, and funding availability. Potential traffic signal or roundabout subject to traffic study in future design phase per Caltrans requirements.



STEPS TO FUTURE IMPLEMENTATION

NEXT STEPS AND ACTION ITEMS

1. Advance Engineering Concepts
2. Refine Concepts with Project Partners
3. Continue Stakeholder Presentations
4. Solicit Additional Community Input
5. Prepare Schedule and Phasing Plan
6. Finalize Summary Report
7. Pursue Grant Funding

CHALLENGES TO IMPLEMENTATION

- All Concepts shown are graphic in nature and do not represent approved project or commitment of funds.
- Implimentation requires additional engineering work including:
 - Environmental Review
 - Permitting
 - Right-of-Way and Property Ownership
 - Preliminary & Final Design
 - ADA Compliance

PHASING PLAN ELEMENTS

- Schedule
- Estimated Total Project Costs
- Cost by Project Phase
- Costs by Year
- Potential Funding Sources

PROJECT PARTNER AGENCIES/STAKEHOLDERS

- Santa Cruz County Regional Transportation Commission (SCCRTC)
- San Lorenzo Unified School District (SLVUSD)
- County of Santa Cruz (DWP)
- Santa Cruz Metropolitan Transit District (METRO)
- California Department of Transportation (Caltrans)
- San Lorenzo Valley Community (Public)

