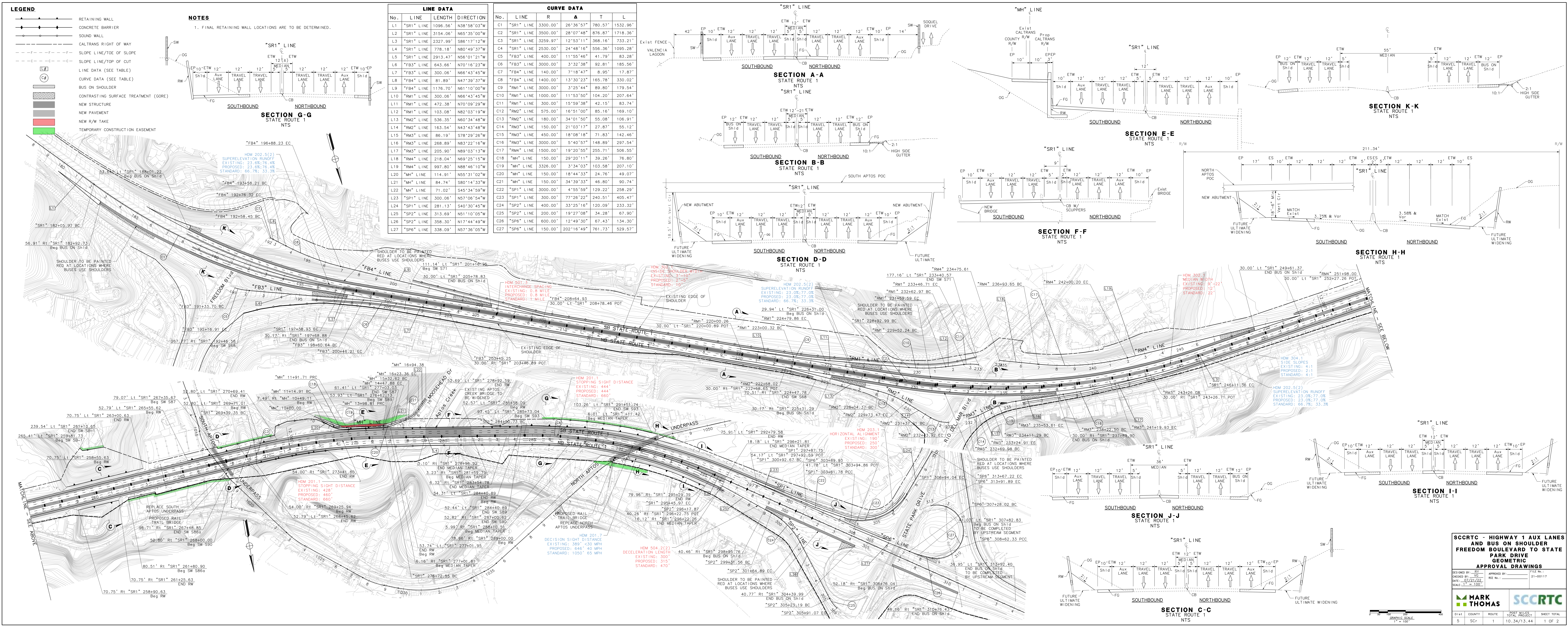


Appendix G

Geometric Approval Drawings



LEGEND

- RETAINING WALL
- CONCRETE BARRIER
- SOUND WALL
- CALTRANS RIGHT OF WAY
- SLOPE LINE/TOE OF SLOPE
- SLOPE LINE/TOP OF CUT
- LINE DATA (SEE TABLE)
- CURVE DATA (SEE TABLE)
- BUS ON SHOULDER
- CONTRASTING SURFACE TREATMENT (GORE)
- NEW STRUCTURE
- NEW PAVEMENT
- NEW R/W TAKE
- TEMPORARY CONSTRUCTION EASEMENT

NOTES

1. FINAL RETAINING WALL LOCATIONS ARE TO BE DETERMINED.

SECTION G-G
STATE ROUTE 1
NTS

LINE DATA				
No.	LINE	LENGTH	DIRECTION	
L1	"SR1" LINE	1096.56'	N38°58'03"W	
L2	"SR1" LINE	3154.06'	N65°35'00"W	
L3	"SR1" LINE	2327.99'	S86°17'12"W	
L4	"SR1" LINE	778.18'	N80°49'37"W	
L5	"SR1" LINE	2913.47'	N56°01'21"W	
L6	"FB3" LINE	643.66'	N70°16'23"W	
L7	"FB3" LINE	300.06'	N86°43'45"W	
L8	"FB4" LINE	81.89'	N47°39'37"W	
L9	"FB4" LINE	1176.70'	N61°10'00"W	
L10	"RM1" LINE	300.06'	N66°43'45"W	
L11	"RM1" LINE	472.38'	N70°09'29"W	
L12	"RM1" LINE	103.08'	N82°03'19"W	
L13	"RM2" LINE	536.35'	N60°34'48"W	
L14	"RM2" LINE	163.54'	N43°43'48"W	
L15	"RM3" LINE	86.19'	S78°29'26"W	
L16	"RM3" LINE	268.89'	N83°22'16"W	
L17	"RM3" LINE	205.90'	N89°03'13"W	
L18	"RM4" LINE	218.04'	N69°25'15"W	
L19	"RM4" LINE	997.80'	N88°46'10"W	
L20	"MH" LINE	114.91'	N55°31'02"W	
L21	"MH" LINE	84.74'	S80°14'33"W	
L22	"MH" LINE	71.02'	S45°34'59"W	
L23	"SP1" LINE	300.06'	N57°06'54"W	
L24	"SP1" LINE	281.13'	S40°30'45"W	
L25	"SP2" LINE	313.69'	N51°10'05"W	
L26	"SP2" LINE	358.30'	N17°44'49"W	
L27	"SP6" LINE	338.09'	N57°36'05"W	

CURVE DATA				
No.	LINE	R	Δ	T
C1	"SR1" LINE	3300.00'	28°36'57"	780.57'
C2	"SR1" LINE	3500.00'	28°07'48"	878.87'
C3	"SR1" LINE	3259.97'	12°53'11"	733.21'
C4	"SR1" LINE	2530.00'	24°48'16"	556.36'
C5	"FB3" LINE	400.00'	11°55'46"	41.79'
C6	"FB3" LINE	3000.00'	3°32'38"	92.81'
C7	"FB4" LINE	140.00'	7°18'47"	8.95'
C8	"FB4" LINE	1400.00'	13°30'23"	165.78'
C9	"RM1" LINE	3000.00'	3°25'44"	89.80'
C10	"RM1" LINE	1000.00'	11°53'50"	104.20'
C11	"RM1" LINE	300.00'	15°59'38"	42.15'
C12	"RM2" LINE	575.00'	16°51'00"	85.16'
C13	"RM2" LINE	180.00'	34°01'50"	55.08'
C14	"RM3" LINE	150.00'	21°03'17"	27.87'
C15	"RM3" LINE	450.00'	18°08'18"	71.83'
C16	"RM3" LINE	3000.00'	5°40'57"	148.89'
C17	"RM4" LINE	1500.00'	19°20'55"	255.71'
C18	"MH" LINE	150.00'	29°20'11"	39.26'
C19	"MH" LINE	3326.00'	3°34'03"	103.58'
C20	"MH" LINE	150.00'	18°44'33"	24.76'
C21	"MH" LINE	150.00'	34°39'33"	46.80'
C22	"SP1" LINE	3000.00'	4°55'59"	129.22'
C23	"SP1" LINE	300.00'	77°26'22"	240.51'
C24	"SP2" LINE	400.00'	33°25'16"	120.09'
C25	"SP2" LINE	200.00'	19°27'08"	34.28'
C26	"SP6" LINE	600.00'	12°49'30"	67.43'
C27	"SP6" LINE	150.00'	202°16'49"	761.73'

SECTION A-A
STATE ROUTE 1
NTS

SECTION B-B
STATE ROUTE 1
NTS

SECTION D-D
STATE ROUTE 1
NTS

SECTION E-E
STATE ROUTE 1
NTS

SECTION F-F
STATE ROUTE 1
NTS

SECTION H-H
STATE ROUTE 1
NTS

SECTION I-I
STATE ROUTE 1
NTS

SECTION J-J
STATE ROUTE 1
NTS

SECTION K-K
STATE ROUTE 1
NTS

SECTION C-C
STATE ROUTE 1
NTS

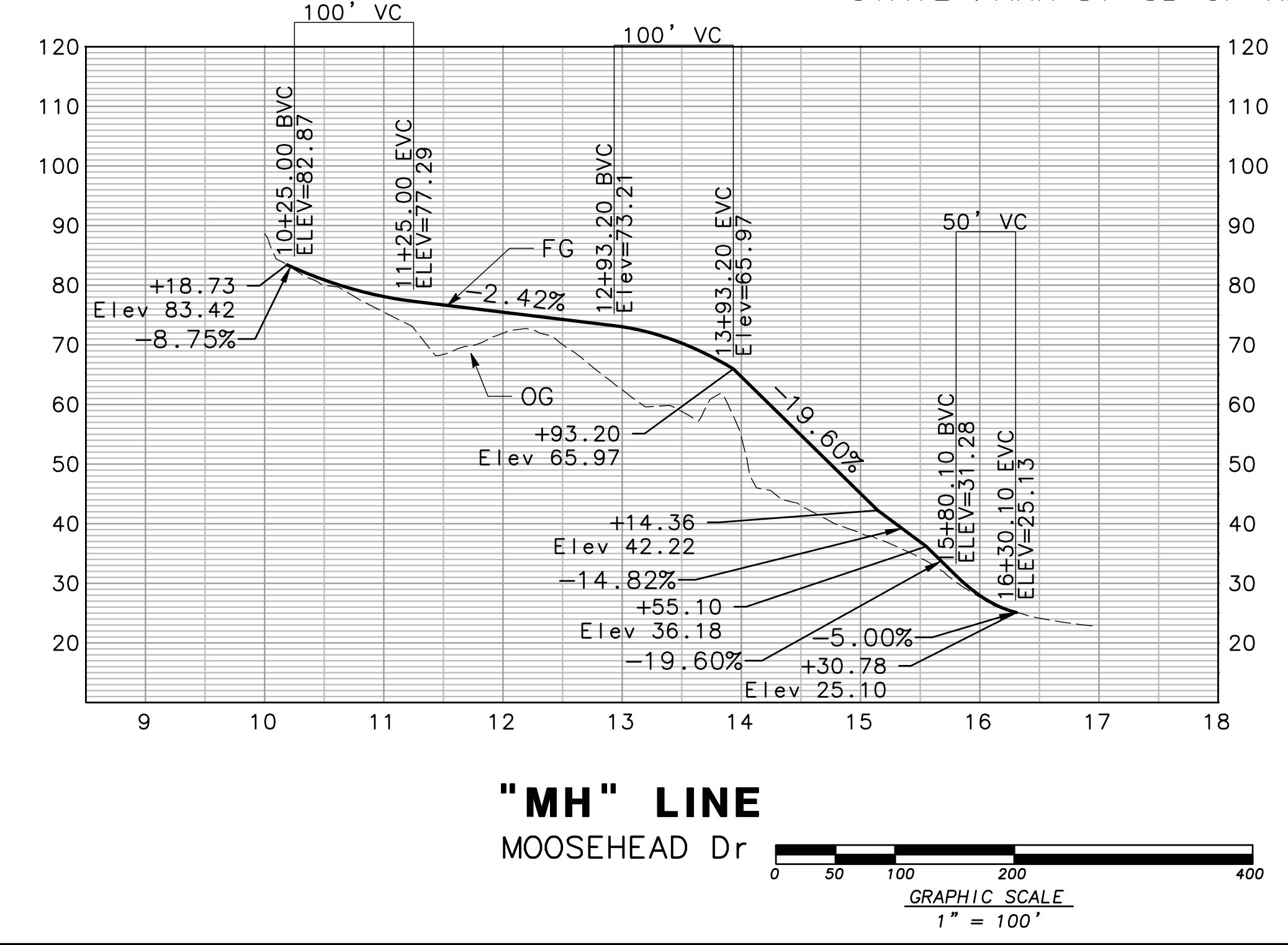
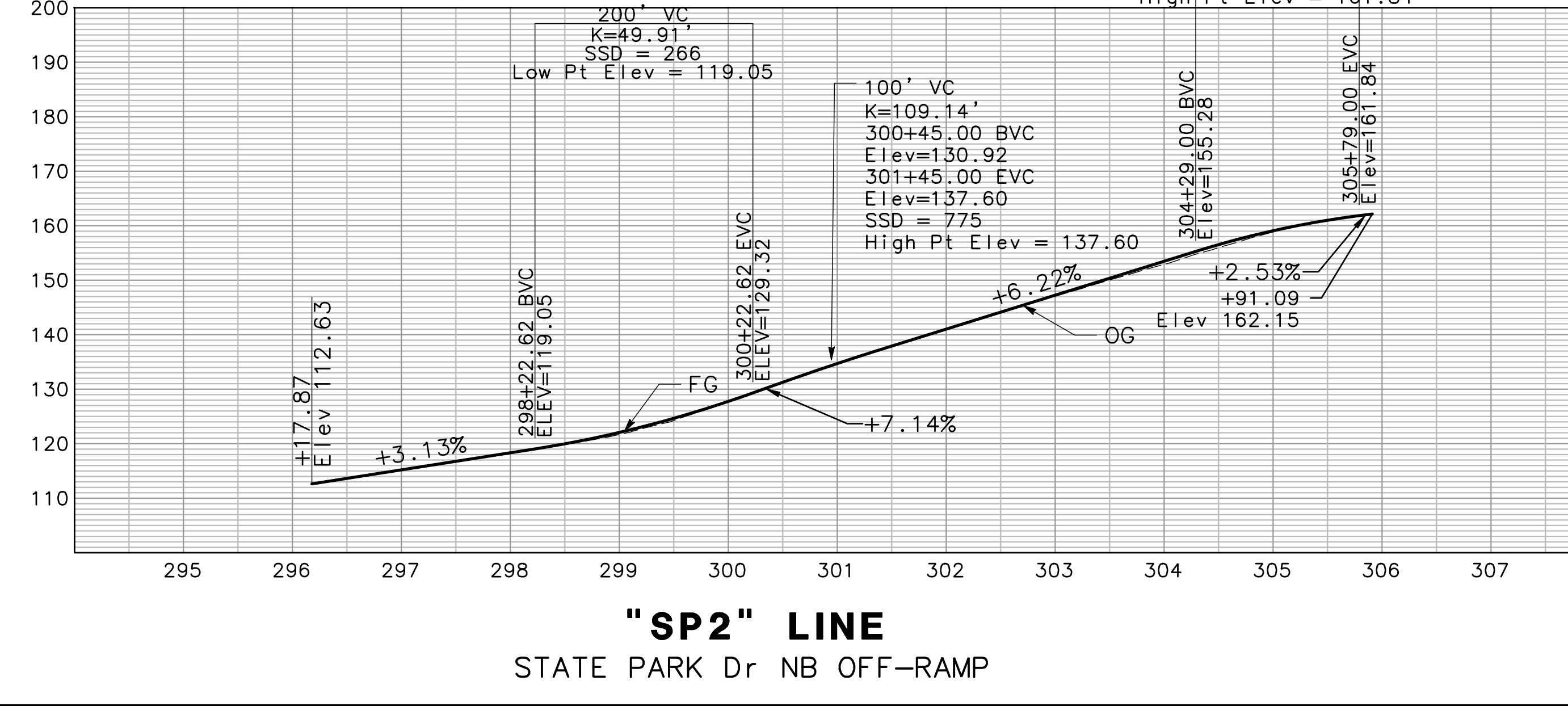
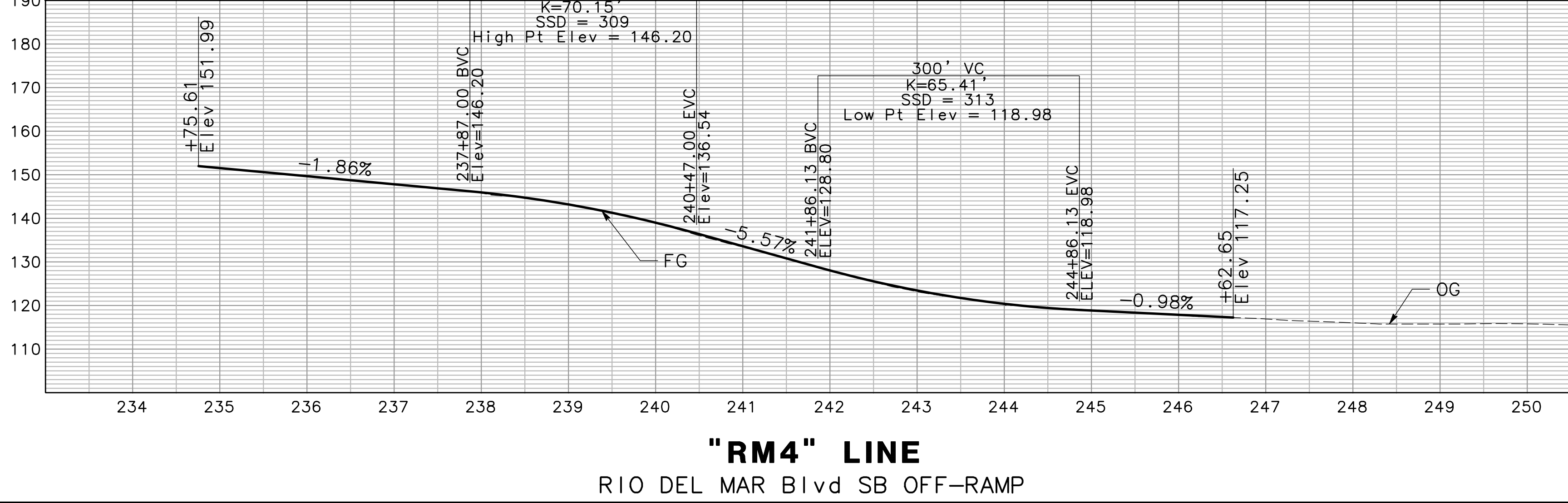
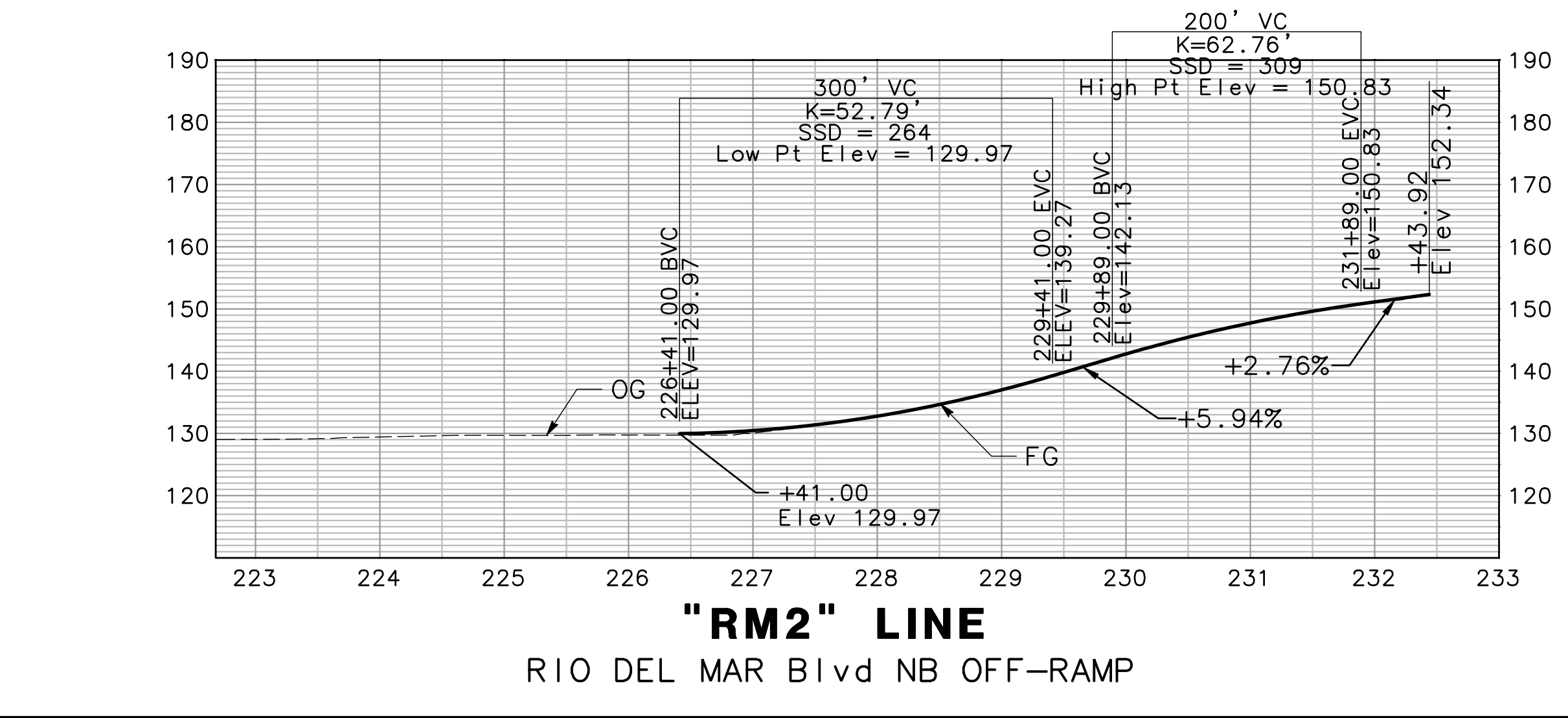
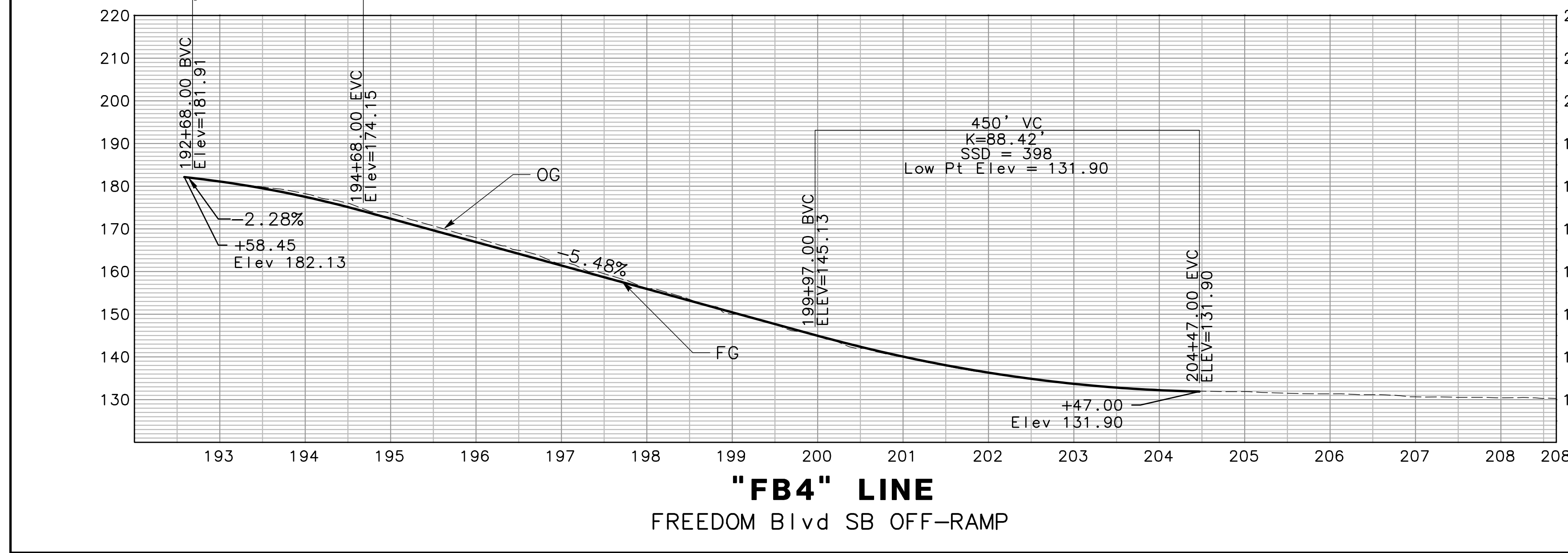
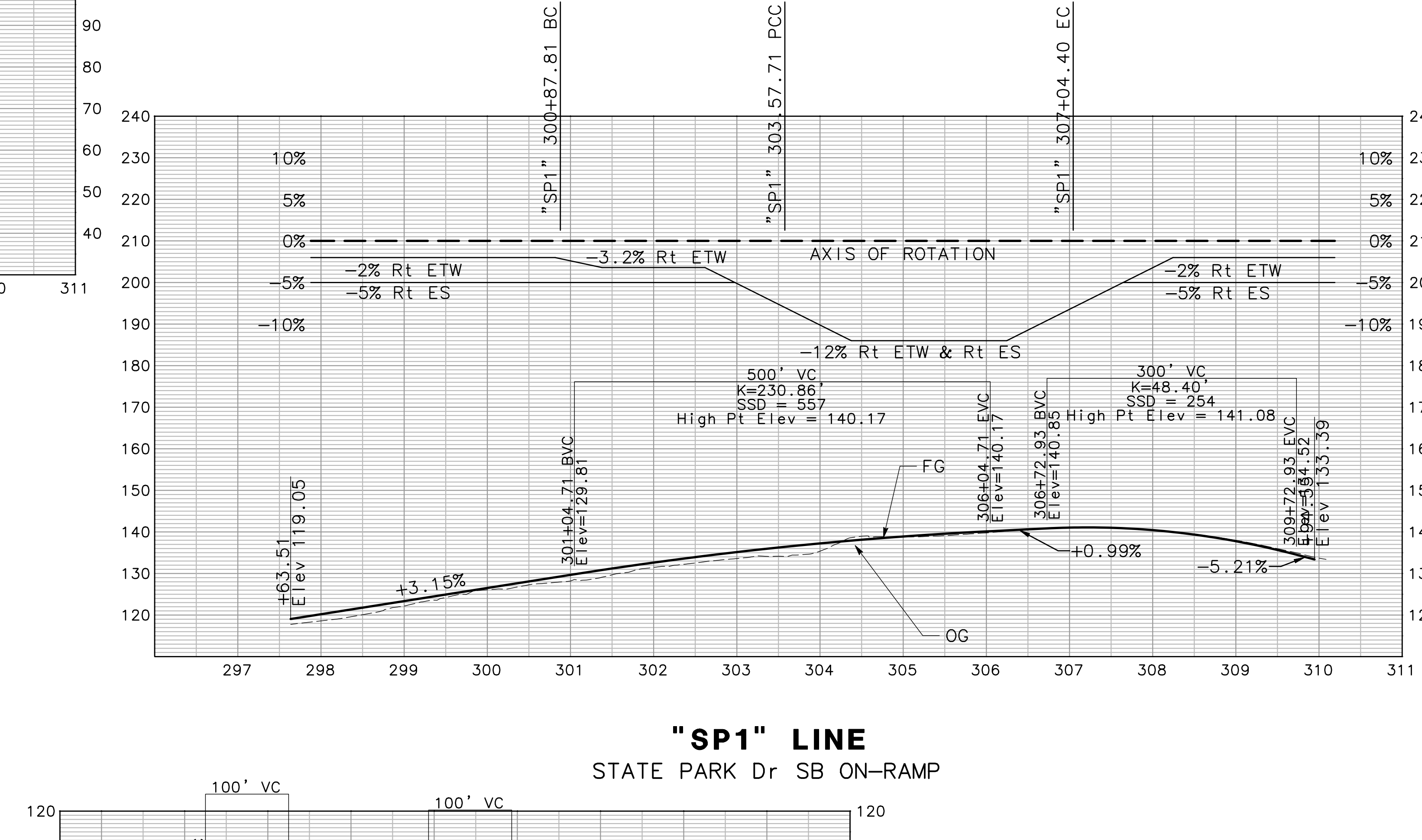
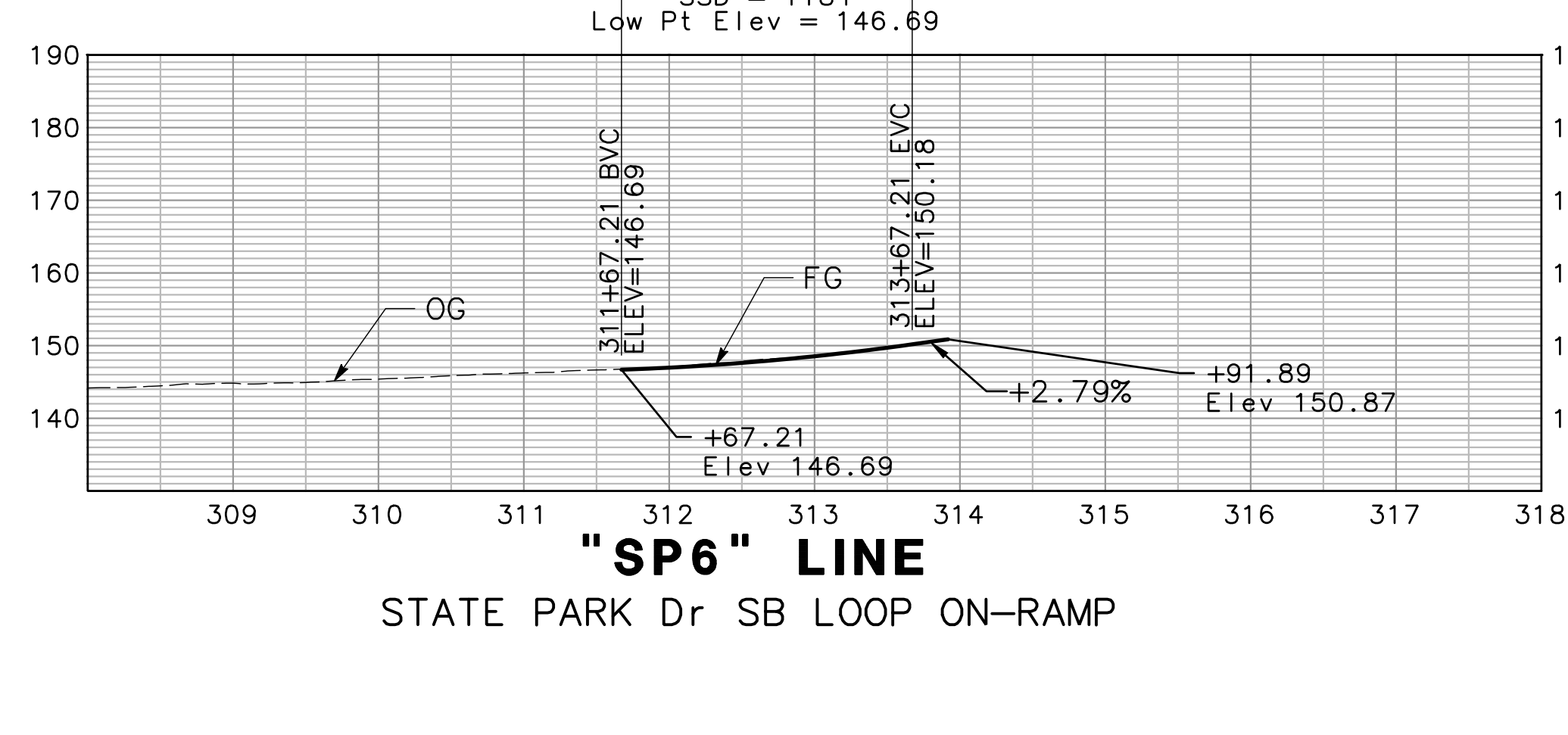
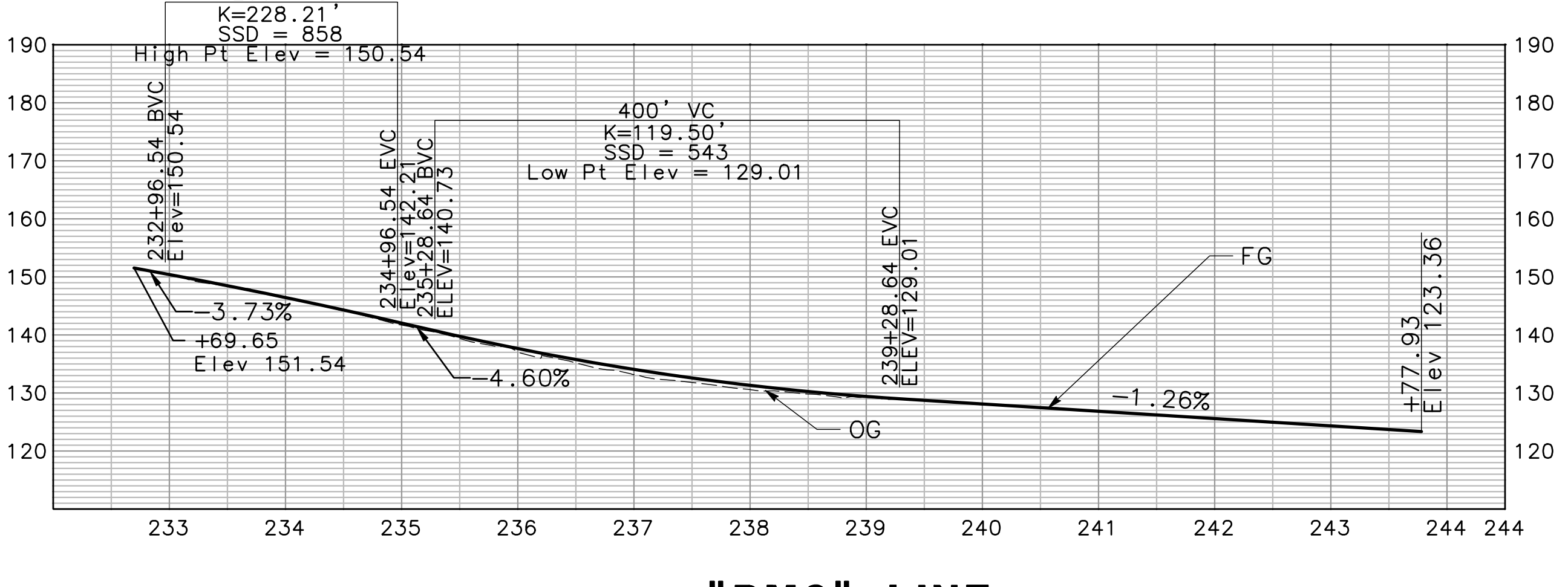
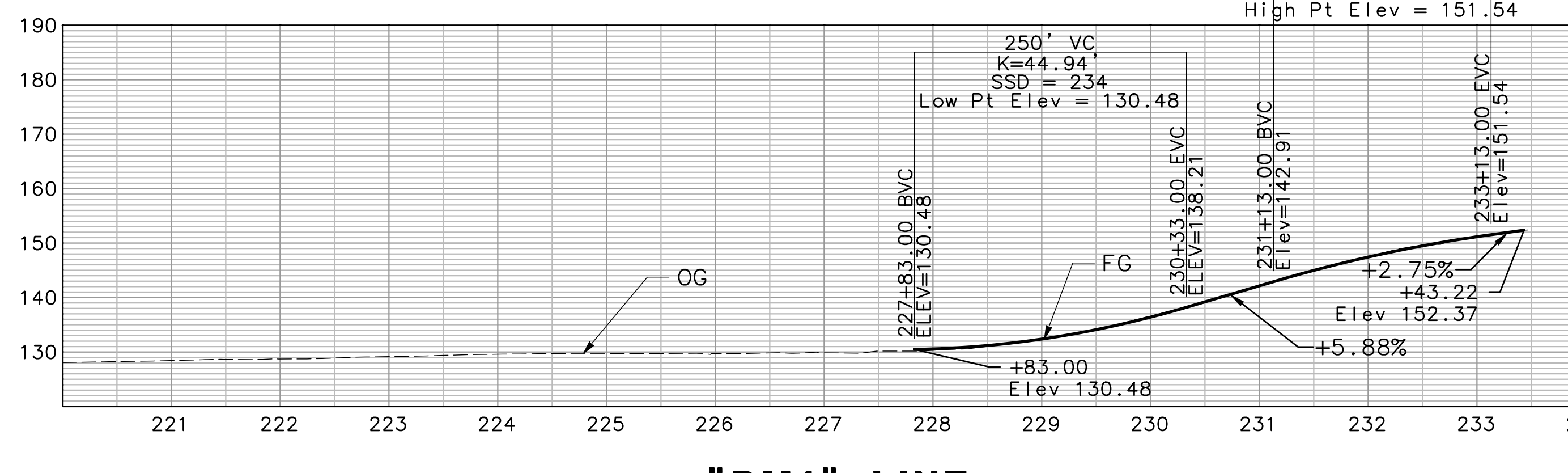
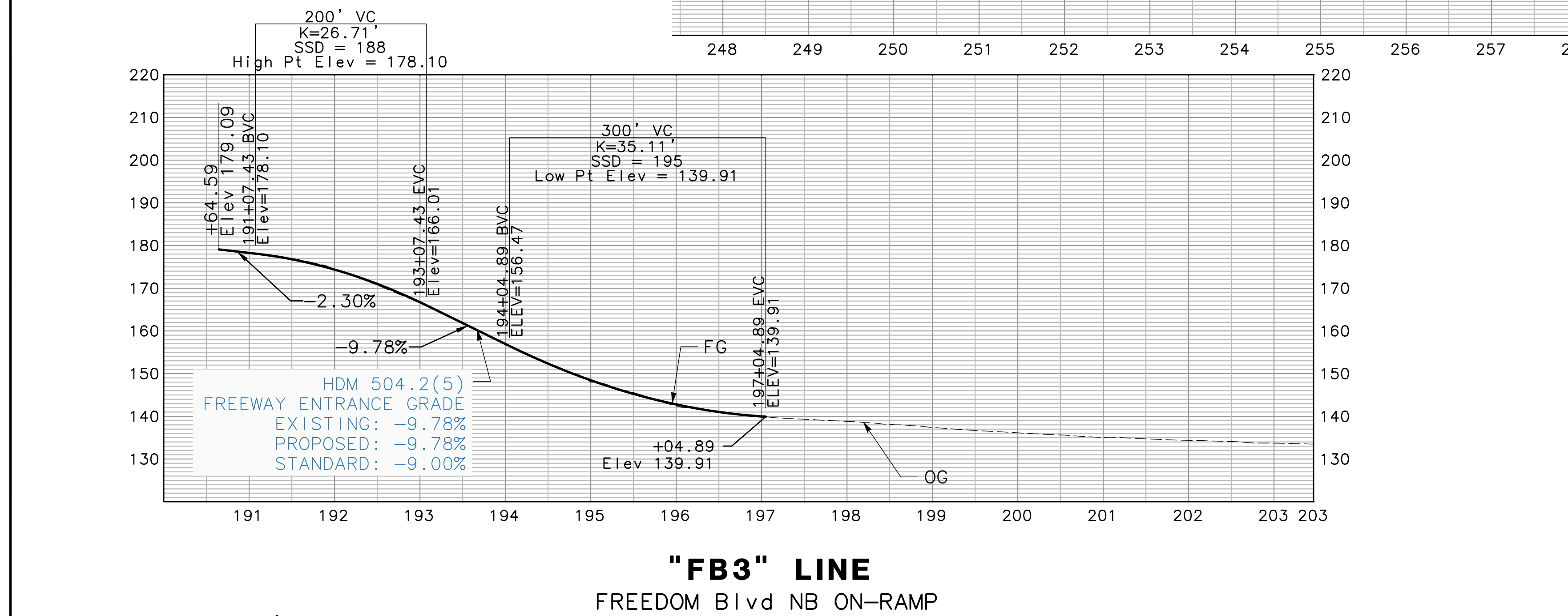
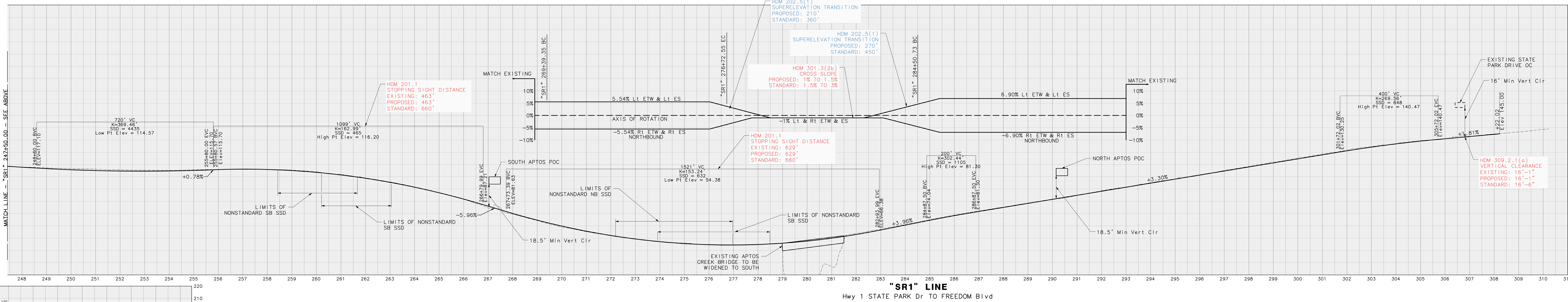
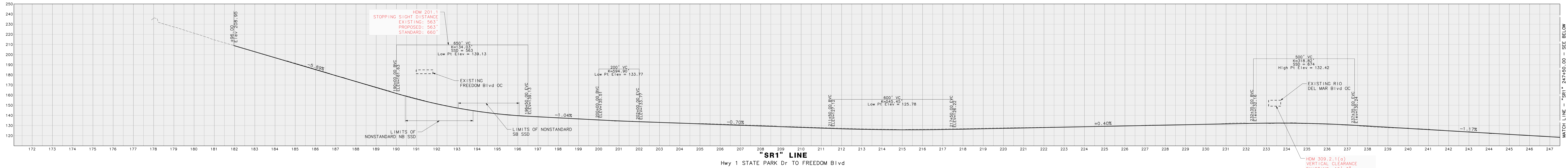
SCCRTC - HIGHWAY 1 AUX LANES AND BUS ON SHOULDER
FREEDOM BOULEVARD TO STATE PARK DRIVE
GEOMETRIC APPROVAL DRAWINGS

DESIGNED BY: RY
CHECKED BY: VC
DATE: 07/23/22
SCALE: 1" = 100'

APPROVED BY: RCE No.:
FILE No.: 21-00117

MARK THOMAS **SCCRTC**

DIST: COUNTY: ROUTE: POST MILES: SHEET TOTAL:
5 SCr 1 10.34/13.44 1 OF 2



SCCRTC - HIGHWAY 1 AUX LANES
AND BUS ON SHOULDER
FREEDOM BOULEVARD TO STATE
PARK DRIVE
GEOMETRIC
APPROVAL DRAWINGS

DESIGNED BY: JRY
CHECKED BY: JVC
DATE: 05/28/22
H 1"=100'
SCALE: V 1"=20'

APPROVED BY: _____
RCE No.: _____
FILE No.: 21-00117

MARK THOMAS
SCCRTC

Dist	COUNTY	ROUTE	POST MILES	SHEET TOTAL
5	SCR	1	10.34/13.44	2 OF 2

LEGEND

- — — — — RETAINING WALL
- - - - - SLOPE LINE/TOE OF SLOPE
- - - - - SLOPE LINE/TOP OF CUT
- (L) LINE DATA (SEE TABLE)
- (C) CURVE DATA (SEE TABLE)
- [] PROPOSED BRIDGE
- [] PROPOSED BRIDGE DECK CONVERSION

NOTES

- FINAL RETAINING WALL LOCATIONS ARE TO BE DETERMINED.

COASTAL RAIL-TRAIL SEGMENT 12 ULTIMATE IMPROVEMENTS

No.	LINE	LENGTH	DIRECTION
L1	"RT-U" LINE	24.77'	S57°44'43"W
L2	"RT-U" LINE	741.07'	N9°48'26"W
L3	"RT-U" LINE	192.67'	N26°50'36"W
L4	"RT-U" LINE	437.31'	N36°36'29"W
L5	"RT-U" LINE	229.39'	N51°23'20"W
L6	"RT-U" LINE	99.14'	N50°54'10"W
L7	"RT-U" LINE	80.68'	N69°15'08"W
L8	"RT-U" LINE	82.37'	S73°32'23"W
L9	"RT-U" LINE	766.79'	S57°52'10"W
L10	"RT-U" LINE	305.81'	S74°08'33"W
L11	"RT-U" LINE	1485.32'	S87°14'37"W

No.	LINE	R	Δ	T	L
C1	"RT-U" LINE	11.00'	90°06'54"	11.02'	17.30'
C2	"RT-U" LINE	2500.00'	4°57'57"	108.41'	216.68'
C3	"RT-U" LINE	1600.00'	17°21'59"	244.36'	484.96'
C4	"RT-U" LINE	506.00'	9°38'54"	42.70'	85.21'
C5	"RT-U" LINE	244.00'	26°41'06"	57.87'	113.64'
C6	"RT-U" LINE	95.35'	9°45'51"	8.14'	16.25'
C7	"RT-U" LINE	500.00'	14°46'51"	64.85'	128.99'
C8	"RT-U" LINE	5000.00'	0°29'11"	21.22'	42.44'
C9	"RT-U" LINE	400.00'	18°20'58"	64.61'	128.10'
C10	"RT-U" LINE	650.00'	37°12'29"	218.80'	422.11'
C11	"RT-U" LINE	300.00'	15°40'14"	41.28'	82.05'
C12	"RT-U" LINE	399.13'	16°16'23"	57.06'	113.36'
C13	"RT-U" LINE	250.00'	13°06'04"	28.71'	57.16'
C14	"RT-U" LINE	16.00'	114°24'00"	24.83'	31.95'

SECTION A-A
NTS

SECTION B-B
NTS

SECTION C-C
NTS

SECTION E-E
NTS

SECTION F-F
NTS

SECTION D-D
NTS

SCRTC - HIGHWAY 1 AUX LANES AND BUS ON SHOULDER PARK DRIVE FREEDOM BOULEVARD TO STATE PARK DRIVE

DRAFT GEOMETRIC APPROVAL DRAWINGS

DESIGNED BY: JTW	APPROVED BY:	FILE NO.: 21-00117
CHECKED BY: JTW	DATE: 3/23/22	SCALE: 1" = 50'

MARK THOMAS **SCRTC**

DIST	COUNTY	ROUTE	POST MILES TOTAL PROJECT	SHEET TOTAL
3	SCR	1	10.34/13.44	1 OF 2

CURVE DATA				
No.	LINE	R	Δ	L
C1	"RT-U" LINE	11.00'	90°06'54"	11.02', 17.30'
C2	"RT-U" LINE	2500.00'	4°57'57"	108.41', 216.68'
C3	"RT-U" LINE	1600.00'	17°21'59"	244.36', 484.96'
C4	"RT-U" LINE	506.00'	9°38'54"	42.70', 85.21'
C5	"RT-U" LINE	244.00'	26°41'06"	57.87', 113.64'
C6	"RT-U" LINE	95.35'	9°45'51"	8.14', 16.25'
C7	"RT-U" LINE	500.00'	14°46'51"	64.85', 128.99'
C8	"RT-U" LINE	5000.00'	0°29'11"	21.22', 42.44'
C9	"RT-U" LINE	400.00'	18°20'58"	61.66', 128.10'
C10	"RT-U" LINE	650.00'	37°12'29"	218.80', 422.11'
C11	"RT-U" LINE	300.00'	15°40'14"	41.28', 82.05'
C12	"RT-U" LINE	399.13'	16°16'23"	57.06', 113.36'
C13	"RT-U" LINE	250.00'	13°06'04"	28.71', 57.16'
C14	"RT-U" LINE	16.00'	114°24'00"	24.83', 31.95'

LEGEND

	RETAINING WALL
	SLOPE LINE/TOE OF SLOPE
	SLOPE LINE/TOP OF CUT
	LINE DATA (SEE TABLE)
	CURVE DATA (SEE TABLE)
	PROPOSED BRIDGE
	PROPOSED BRIDGE DECK CONVERSION

NOTES

1. FINAL RETAINING WALL LOCATIONS ARE TO BE DETERMINED.

COASTAL TRAIL SEGMENT 12 INTERIM IMPROVEMENTS

LINE DATA				
No.	LINE	LENGTH	DIRECTION	
L1	"RT" LINE	42.48'	S57°44'43"W	
L2	"RT" LINE	890.00'	N10°11'59"W	
L3	"RT" LINE	194.92'	N26°50'38"W	
L4	"RT" LINE	359.14'	N36°18'43"W	
L5	"RT" LINE	78.81'	N51°36'40"W	
L6	"RT" LINE	571.58'	S57°45'32"W	
L7	"RT" LINE	310.20'	S74°08'33"W	
L8	"RT" LINE	1008.60'	S87°11'40"W	
L9	"RT" LINE	60.00'	N21°38'36"E	

CURVE DATA				
No.	LINE	R	Δ	L
C1	"RT" LINE	5.00'	90°06'53"	5.01'
C2	"RT" LINE	2512.00'	4°45'45"	104.46'
C3	"RT" LINE	1575.00'	17°14'49"	238.85'
C4	"RT" LINE	250.00'	16°38'40"	36.57'
C5	"RT" LINE	250.00'	9°28'05"	20.70'
C6	"RT" LINE	1025.00'	15°17'57"	137.67'
C7	"RT" LINE	2300.00'	6°20'21"	127.36'
C8	"RT" LINE	645.00'	61°53'42"	386.75'
C9	"RT" LINE	2625.00'	2°23'46"	54.89'
C10	"RT" LINE	1228.22'	6°33'15"	70.33'
C11	"RT" LINE	250.00'	10°04'35"	22.04'
C12	"RT" LINE	350.00'	13°03'07"	40.04'
C13	"RT" LINE	10.00'	114°15'56"	15.48'

