

Measure D Annual Report Cover Sheet - Fiscal Year 2021/22
Investment Category:
San Lorenzo Valley (SLV)/Highway 9 Corridor
Lead Agencies: RTC, Caltrans, County of Santa Cruz

Dear Measure D Taxpayer Oversight Committee: The Santa Cruz County Regional Transportation Commission (RTC) is pleased to present the following information demonstrating compliance with the voter-approved Measure D Ordinance, Strategic Implementation Plan (SIP), agreements and guidelines. Collectively they make up the Measure D annual report for San Lorenzo Valley/Hwy 9 Corridor Improvements.

As noted in the Measure D Expenditure Plan, the Neighborhood Projects investment category includes **\$10 million in Measure revenues over 30 years for transportation projects improving travel for residents of San Lorenzo Valley.**

Measure D Financial Information	
FY21/22 Formula Allocation	\$333,333
April 2017 Formula funds reflected in the FY21/22 audit	\$13,889
Unspent Prior Year Allocations	\$1,299,285
Interest earned in FY21/22 (including on Unspent Prior Allocations)	6,159
Total Measure D Funding Available in <u>FY21/22</u>	\$1,666,555
Total Measure D Funds Spent in <u>FY21/22</u>	\$214,296
Total Measure D Rollover to <u>FY22/23</u>	\$1,452,259
Maintenance of Effort	
FY21/22 LOCAL funds spent on transportation projects, operations, and/or services <i>(excludes grants & Measure D funds)</i>	100%
Maintenance of Effort Baseline <i>(average amount of local funds spent on transportation projects in 3-5 fiscal years prior to 2017)</i>	NA- all RTC funds spent on transportation
Measure D Compliance Documents	
Document	Attached (check)
1. FY21/22 Annual Report Cover Sheet <i>(this document)</i>	x
2. FY21/22 Audited Financials for Measure D funds	X – For all regional projects
3. FY21/22 Expenditure Report Spreadsheet <i>(shows what Measure D formula funds were spent on)</i>	x
3a. Grouped projects supplemental information <i>(specific locations, summary of work done, and schedule)</i> <ul style="list-style-type: none"> • Caltrans Complete Street Project Initiation Document covers Highway 9 from Felton to Boulder Creek, divided into six independent projects meeting environmental requirements of independent utility and logical termini • SLV/SR9 Corridor Tech Assistance focused on planning for SLV Schools Complex in Felton 	Hwy 9 – Felton-Boulder Creek. See Expenditure Report for additional information
3b. Leveraged Funds - Measure D has been used to leverage funds for the following:	

<ul style="list-style-type: none"> • Boulder Creek Complete Streets: \$1.5 million earmark (from Congresswomen Eshoo Congressionally Directed Spending approved 12/22) • SLV Schools Complex Study: \$105k RSTPX (secured 12/21), \$90,000 SLVUSD 	
4. Map: See Hwy 9/SLV Complete Streets Plan for maps www.sccrtc.org/slv and last page of this document.	See Hwy 9/SLV Corridor Plan
5. FY21/22 Performance Measures Report - <i>only applies to direct recipients (cities, county and transit agencies)</i>	NA
6. Maintenance of Effort Compliance Spreadsheet:	NA
a. If FY21/22 Local funds expended were lower than Baseline amount, explain why: NA	NA
7. Indirect cost allocation plan: Does your agency have an indirect cost allocation plan (ICAP)? <ul style="list-style-type: none"> a. Date of FY21/22 ICAP: <u>10/5/21</u> b. ICAP Rate: <u>125%</u> 	Yes
8. 5-Year Program of Projects (5-Year Plan): <i>List showing planned use Measure D formula funds in the next 5 years.</i>	attached
a. Evidence that the 5-year program of projects was approved through a public process. <ul style="list-style-type: none"> i. Public hearings at RTC meetings: <ul style="list-style-type: none"> • 10/7/21: FY21/22-25/26 5-year plans <ul style="list-style-type: none"> ○ News Release: https://sccrtc.org/notice-of-public-hearing-measure-d-five-year-plan-adoption/ • <u>11/3/22</u>: FY22/23-26/27 5-year plan updates (Staff Report and 5-year plans) ii. Advisory Committee Review of draft plans: August 2021 and October 2022 <ul style="list-style-type: none"> • Bicycle Committee • Elderly and Disabled Transportation Advisory Committee (E&D TAC) • Interagency Technical Advisory Committee (ITAC) 	X See RTC website for staff reports
b. Date of 5-Year Plan Public Hearing soliciting input on 5-Year Plan	10/7/21, 11/3/22
c. Date annual 5-year Plan approved by Governing Board <i>Interim amendments also made during RTC public meetings</i>	10/7/21, 11/3/22
9. Complete Streets Compliance (<i>Cities/County only</i>)	NA
10. Annual Report Narrative (<i>may be included in Management & Admin section of audit</i>)	
a. Fund Balances, Carryover Projects, and Description of planned, longer-term and future uses of Measure D revenues, if known. <ul style="list-style-type: none"> • \$10 million of Measure D revenues over the 30-year measure are designated for projects in San Lorenzo Valley (SLV). • In 2019 a major community-based plan was developed to prioritize improvements in the corridor with a combination of Measure D and Caltrans Planning Grant funds. Building off the community-based Highway 9/San Lorenzo Valley (SLV) Complete 	x

<p>Streets Corridor Plan, Caltrans and RTC used Measure D funds in FY2021/22 to scope and identify priority projects for implementation along the corridor through preparation of a Project Initiation Document (PID). The PID was completed in 2022 and Measure D revenues are being used to leverage other funds and initiate future phases of priority projects to get them construction-ready.</p> <ul style="list-style-type: none"> • One high-priority project is improving access to and circulation past the SLV elementary, middle and high schools north of Felton, for all modes of transportation. In Spring 2022, RTC worked with SLV Unified School District (SLVUSD) and Caltrans to initiate the SLV Schools Access Study. Measure D was used to leverage grants and other funds for this work. With robust input from the public, as well as collaboration within the 5-agency project management team (RTC, SLVUSD, Santa Cruz County public works, Caltrans, and METRO), draft circulation concepts are under development that, when finalized, will enable RTC and partners to seek funding for environmental review, final design, and construction phases. • Balances will be used to leverage state funds and grants to implement community-identified priorities. 	
<p>b. Future Liabilities: Since only 1/30th of the \$10 million in Measure D funds designated for this project are allocated each year (approx. \$333k/year over 30 years) and the Complete Streets Corridor Plan identified over \$100 million in priorities, the RTC, County of Santa Cruz and Caltrans will utilize Measure D funds to leverage other funds. This includes looking at opportunities to integrate bike and pedestrian facilities into Caltrans SHOPP and County of Santa Cruz maintenance, operational and safety projects.</p>	
<p>c. Compliance with Applicable Laws: <i>Confirm projects were implemented in compliance with applicable laws, regulations, requirements, standards of practice, guidelines, etc.</i></p>	<p>Yes – projects will be implemented following Caltrans, state, and local regulations</p>
<p>Public Outreach/Notification of Use of Measure D Funds</p>	
<p>11. Public Outreach/Process:</p> <ul style="list-style-type: none"> • Caltrans and the SCCRTC conducted meetings with stakeholders, including SLV schools during FY21/22. • The SLV Schools Access project team conducted outreach including: <ul style="list-style-type: none"> • June 2022: Surveys of community members, including students, teachers, parents, and school staff, on concerns and ideas in the project area. Virtual public workshop on June 9th. • November 2022: Virtual (Nov 2) and in-person (Nov 3) community workshops to review and provide feedback on draft improvement concepts. 	<p>X</p>
<p>12. Sample(s) of public outreach on Measure D-funded projects 7/1/20-6/30/21</p>	
<p>a. Websites with Measure D information</p> <ul style="list-style-type: none"> • www.sccrtc.org/move • https://sccrtc.org/funding-planning/measured/regional-projects/ • www.sccrtc.org/slv 	<p>x</p>

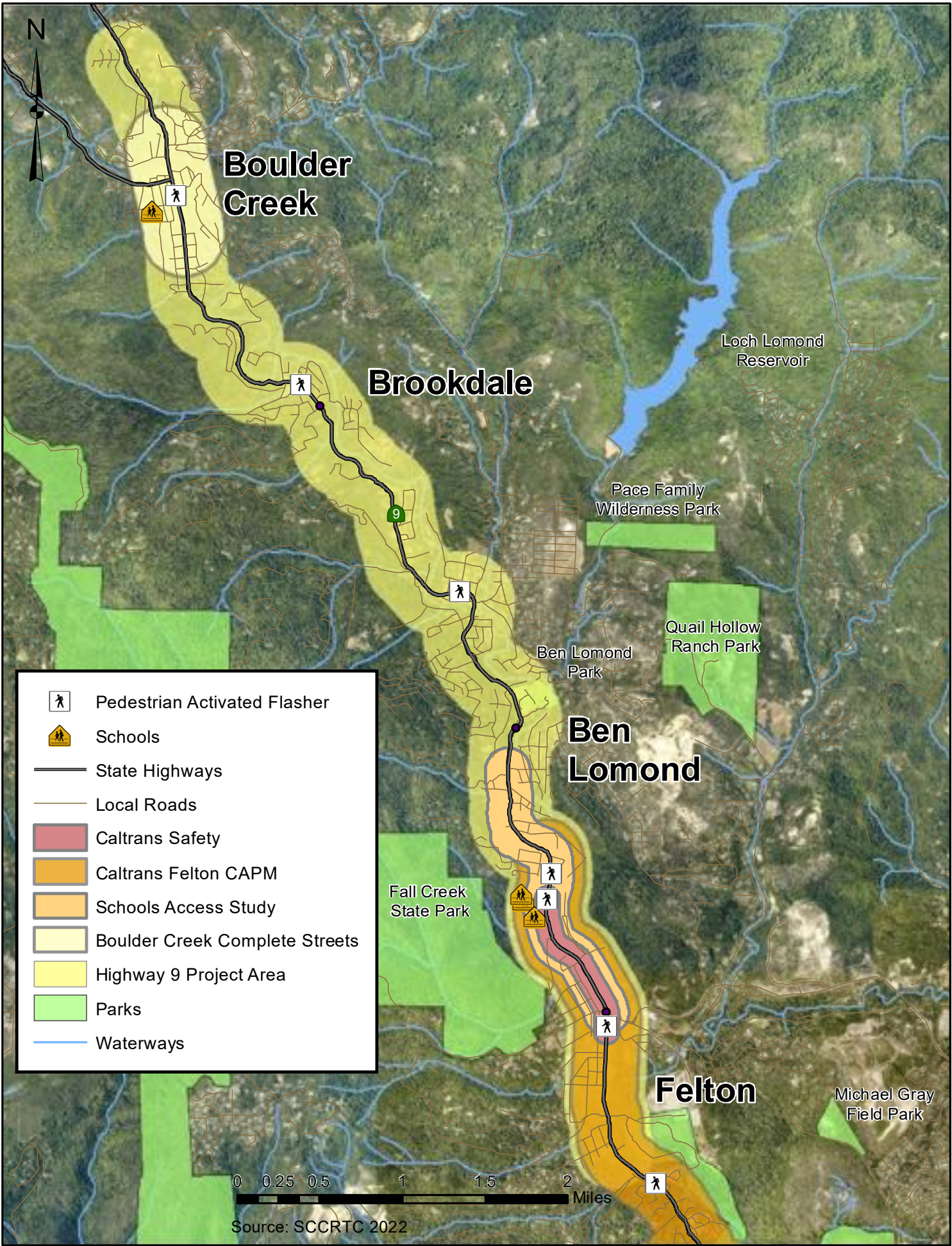
b. News Articles and News Releases: <ul style="list-style-type: none"> • Local Agencies Team up to Improve Access to SLV Schools Complex (5/20/22) • SLV Schools Access Study Public Workshop Recording (6/9/22) • https://pressbanner.com/slvusd-receives-update-on-traffic-plan/ 	x
c. Signage: The Measure D logo informing the community of projects funded by Measure D, was included on project fact sheet and the RTC website.	X
13. Photos: NA – no capital projects funded by Measure D were implemented in FY21/22	
14. Fact Sheets: Attached	x

Contacts

Designated staff available to report on or answer any and all inquiries in regard to Recipient Agency’s audit, projects and expenditures, and/or compliance with Measure D before the RTC and/or the Measure D Taxpayer Oversight Committee or RTC advisory committees, as applicable.

Name	Title	Email
Tracy New	Director of Budget and Finance	tnew@sccrtc.org
Shannon Munz	Communications Specialist	smunz@sccrtc.org
Brianna Goodman	Transportation Planner	bgoodman@sccrtc.org

s:\measured\fiscal\expenditurereports\fy2021expenditurereports\rtc\measure d- annual-cover sheet-slvhwy9-2021.docx



MEASURE D EXPENDITURE REPORT

Reporting Year **FY21/22**

Recipient Agency/Investment Category **SCCRTC- SR9/SLV Corridor**

Project Description/Location						
#	Project Name	Project Description <i>(may include additional project components, ex. complete streets, traffic calming, crossing improvements, drainage upgrades, etc.)</i>	Location/Limits (if grouped project, list each location/limit)	Work Done in FY21/22	Construction or Implementation schedule	FY21/22 Measure D Expenditures
1	Preliminary scope and engineering documents for near term projects	Develop engineers estimates, prelim. designs, initial screening and implementation documents needed to secure funds for priority projects; may include engineering needed to integrate complete streets components into SHOPP and local projects. Includes \$150k to Caltrans for complete streets Project Initiation Document (PID) for the corridor.	SLV Plan Corridor - South of Felton to north of Boulder Creek	Continued work with Caltrans on inclusion of Highway 9 complete streets components in existing projects, incorporation into both existing Caltrans funded and Measure D funded PID documents for potential improvements in the San Lorenzo Valley schools area, Felton, and the rest of the SLV Highway 9 corridor.	PID to be completed in 2022	\$ 98,100.08
2	San Lorenzo Valley (SLV) Safe Routes to Schools -Preconstruction & grant match	SLV Schools Complex Circulation and Access Study and funding designated for potential match of future grant opportunities.	Felton - around tri-schools complex	Initiate work with schools	Schools Access Study began in FY21/22	\$ 83,092.72
3	SLV/SR9 Corridor technical assistance, oversight, and community outreach	Includes legal, engineering review, grant preparation, funding agreements, RTC staff coordination with Caltrans, County, schools, and other stakeholders, public outreach, other other planning activities.	SLV Plan Corridor - South of Felton to north of Boulder Creek	Evaluated and shared information on local road and highway projects with the community, project sponsors and state entities, including funding shortfalls and opportunities, as they relate to local, state and federal transportation funding proposals.	Ongoing	\$ 37,828.49
Past/Future Expenditures						
4	Completed: Hwy 9/SLV Corridor Plan	Community-based comprehensive corridor plan, identifying priority transportation projects.			Completed 6/19	
5	Hwy 9 Pedestrian Crosswalks and Enhancements	Stripe new crosswalks and add RRFBs, ladder striping, etc to several existing crosswalks	Various	NA		
6	Completed: Farmer St. Road Repair (alternate ped/bike route to Hwy 9)	Resurfacing Farmer Street, a pedestrian bypass to access SLV Schools Campus			Completed Fall 2019	
TOTAL						\$ 219,021.29

MEASURE D EXPENDITURE REPORT

#	Project Name	Prior Year Measure D Expenditures			Measure D TOTAL SPENT <i>through reporting year</i>	<i>(Est) Future Year(s) Measure D Expenditures</i>	Leveraged Funds, if any		Total Project Cost	Project in approved 5-year plan?
		FY18/19 Measure D Expenditures	FY19/20 Measure D Expenditures	FY20/21 Measure D Expenditures			Leveraged Fund Amounts <i>(grants & other funds where Meas. D used as match)</i>	Leveraged Fund Source(s) Name(s)		
1	Preliminary scope and engineering documents for near term projects		\$ 25,152.04	\$ 56,747.88	\$ 180,000.00	TBD	TBD	SHOPP	TBD	yes
2	San Lorenzo Valley (SLV) Safe Routes to Schools -Preconstruction & grant match		\$ -	\$ -	\$ 83,092.72	\$1M	SLVUSD \$99k, RSTPX \$105k	TBD	TBD	yes
3	SLV/SR9 Corridor technical assistance, oversight, and community outreach		\$ 775.00	\$ 305.84	\$ 38,909.33	Ongoing TBD	TBD	TBD	TBD	yes
Past/Future Expenditures										
4	Completed: Hwy 9/SLV Corridor Plan	\$ 35,000.00			\$ 35,000.00					
5	Hwy 9 Pedestrian Crosswalks and Enhancements		\$ 11,588.68	\$ 9,071.16	\$ 20,659.84					
6	Completed: Farmer St. Road Repair (alternate ped/bike route to Hwy 9)		\$ 15,000.00		\$ 15,000.00					
		\$ 35,000.00	\$ 52,515.72	\$ 66,124.88	\$ 372,661.89					

MEASURE D EXPENDITURE REPORT

#	Project Name	CEQA compliance (List type of doc & certification date - e.x. CE, 5/1/18)	Completion Date (actual or estimate)	Measure D use			Other
				FY21/22 Measure D-funded Capital Costs	FY21/22 Measure D-funded Non-capital (non-infrastructure, outreach, admin)	FY21/22 Measure D-funded Indirect costs (and overhead)	Other Notes or Information (optional)
1	Preliminary scope and engineering documents for near term projects	NA	Est Spring 2022		\$ 98,100.08		Payment to Caltrans
2	San Lorenzo Valley (SLV) Safe Routes to Schools -Preconstruction & grant match				\$ 65,184.36	\$ 17,908.36	Consultant and staff
3	SLV/SR9 Corridor technical assistance, oversight, and community outreach	NA	ongoing		\$ 17,194.24	\$ 20,634.25	Staff time
Past/Future Expenditures							
4	Completed: Hwy 9/SLV Corridor Plan						
5	Hwy 9 Pedestrian Crosswalks and Enhancements						
6	Completed: Farmer St. Road Repair (alternate ped/bike route to Hwy 9)						

Measure D: 5-Year Program of Projects (FY22/23-FY26/27)

Approved 11/3/22

Previously updated 6/6/19, 11/7/19, 9/3/20, 10/7/21, 3/17/22.

Category: Neighborhood Projects: San Lorenzo Valley (SLV)/Highway 9 Corridor (\$333,333/year; \$10 million over 30 years)

	Name/Road/Limits	Description	Schedule	Prior Years	FY21/22 - estimated actuals ²	Planned ¹					Total Measure D	Fall 2022 Updates
						FY22/23	FY23/24	FY24/25	FY25/26	FY26/27		
1	San Lorenzo Valley (SLV) Safe Routes to Schools -Preconstruction & grant match	Funding designated for potential match of future grant opportunities. Includes \$99k for SLV Schools Complex Circulation and Access Study.	Schools Access Study began in FY21/22	\$0	\$50,858	\$949,142	\$0	\$0	\$0	\$0	\$1,000,000	No change to total. \$5,858 shifted from FY22/23 to FY21/22 to reflect expenditures on SLV Schools Access study.
2	Preliminary scope and engineering documents for near term projects	Develop engineers estimates, prelim. designs, initial screening and implementation documents needed to secure funds for priority projects; may include engineering needed to integrate complete streets components into SHOPP and local projects. Includes \$180k to Caltrans for complete streets Project Initiation Document (PID) for the corridor.	Ongoing. Complete Streets PID complete 2022.	\$81,900	\$98,100	\$30,000	\$30,000	\$0	\$0	\$0	\$240,000	Prev. \$210k. FY21/22 and FY22/23 updated to reflect estimated actuals and add \$30k in FY23/24.
3	SLV/SR9 Corridor technical assistance, oversight, and community outreach	Includes legal, engineering review, grant preparation, funding agreements, RTC staff coordination with Caltrans, County, schools, and other stakeholders, public outreach, other planning activities.	Ongoing	\$1,081	\$60,613	\$58,307	\$0	\$0	\$0	\$0	\$120,000	Add \$20k for grant application prep and public outreach in FY22/23. Some funds previously programmed in FY22/23 advanced to FY21/22. Oversight of Hwy 9 Ped Crosswalks & RRFBs HSIP project shown under completed.
4	<u>Match for Future Grant Opportunities</u>	<u>Remaining 5 segments of Complete Streets Projects along Highway 9. Complete streets and safety improvements include new sidewalks, crosswalks, bike lanes, improved access to transit, and measures to reduce speeding, improve sight lines, and reduce conflicts for motorists.</u>	Begin pre-construction Spring 2023, pending grant award	\$0	\$0	\$125,000	\$225,000	\$390,000	\$400,000	\$1,260,000	\$2,400,000	<u>NEW: Program funds to serve as the local match for competitive grants.</u>
COMPLETED PROJECTS												
5	Hwy 9 Pedestrian Crosswalks and Enhancements	Stripe new crosswalks and add RRFBs, ladder striping, etc to several existing crosswalks	Completed Spring 2021	\$20,660	\$4,726	\$0					\$25,385	Primarily funded by an HSIP grant. Previous estimate \$30k. Balance to be used on other projects.
6	Hwy 9/SLV Complete Streets Corridor Plan	Community-based comprehensive corridor plan, identifying priority transportation projects.	Completed 6/19	\$35,000							\$35,000	No change. Completed
7	Farmer St. Road Repair (alternate ped/bike route to Hwy 9)	Resurfacing Farmer Street, a pedestrian bypass to access SLV Schools Campus	Completed Fall 2019	\$15,000							\$15,000	No change. Completed
Estimated 5-Year Measure D Expenditures				\$153,641	\$214,296	\$1,162,449	\$255,000	\$390,000	\$400,000	\$1,260,000	\$3,835,385	

1- Funds may be shifted between years based on actual expenditures/use rates when sufficient cash capacity exists.

2- Prior Year actuals and carryover to current fiscal year to be adjusted based on audited actuals. Shown here are preliminary estimates