



CAMBRIDGE
SYSTEMATICS

Think  Forward

California Central Coast Sustainable Freight Study

Project Update Meeting

presented to

*Santa Cruz County Regional Transportation
Commission*

Interagency Technical Advisory Committee

January 18, 2024

presented by

Cambridge Systematics, Inc.

with Fehr & Peers

Agenda

- Study Overview
- Draft Insights from the Existing Conditions and Performance Summary
- Public Engagement
- Next Steps

Study Overview

Study Overview

- The Central Coast's economic vitality and quality of life depend in great part on how well the region's freight transportation network moves goods
- Much has changed since the completion of the 2016 U.S. 101 Central Coast California Freight Strategy, requiring the region to revisit current and future freight demand, logistics patterns, and other factors that impact its long-range freight investment strategy
- The California Central Coast Sustainable Freight Study (CCCSFS) will serve as the blueprint for long-term freight planning and investments in the Central Coast region.



Key Technical Tasks



Project Management

Vision and Goals



**Existing Conditions and
Performance Summary**

**Analyze Freight Performance, Identify
Potential Projects & Strategies**



Engagement

**Draft, Revised Draft, and
Final Report**



Draft Insights from the Existing Conditions and Performance Summary

Existing Conditions and Performance Summary

Freight Modal Profiles

- Summary and inventory of the region's multimodal freight assets

Freight Demand

- Analysis of freight demand as indicated by current and future commodity flows

Safety Performance

- Safety analysis on the locations, rates, and severity of crashes on the region's highway and rail network

Freight Land Uses

- Summary of the freight-generating land uses in the Central Coast

Economic Development and Market Assessment

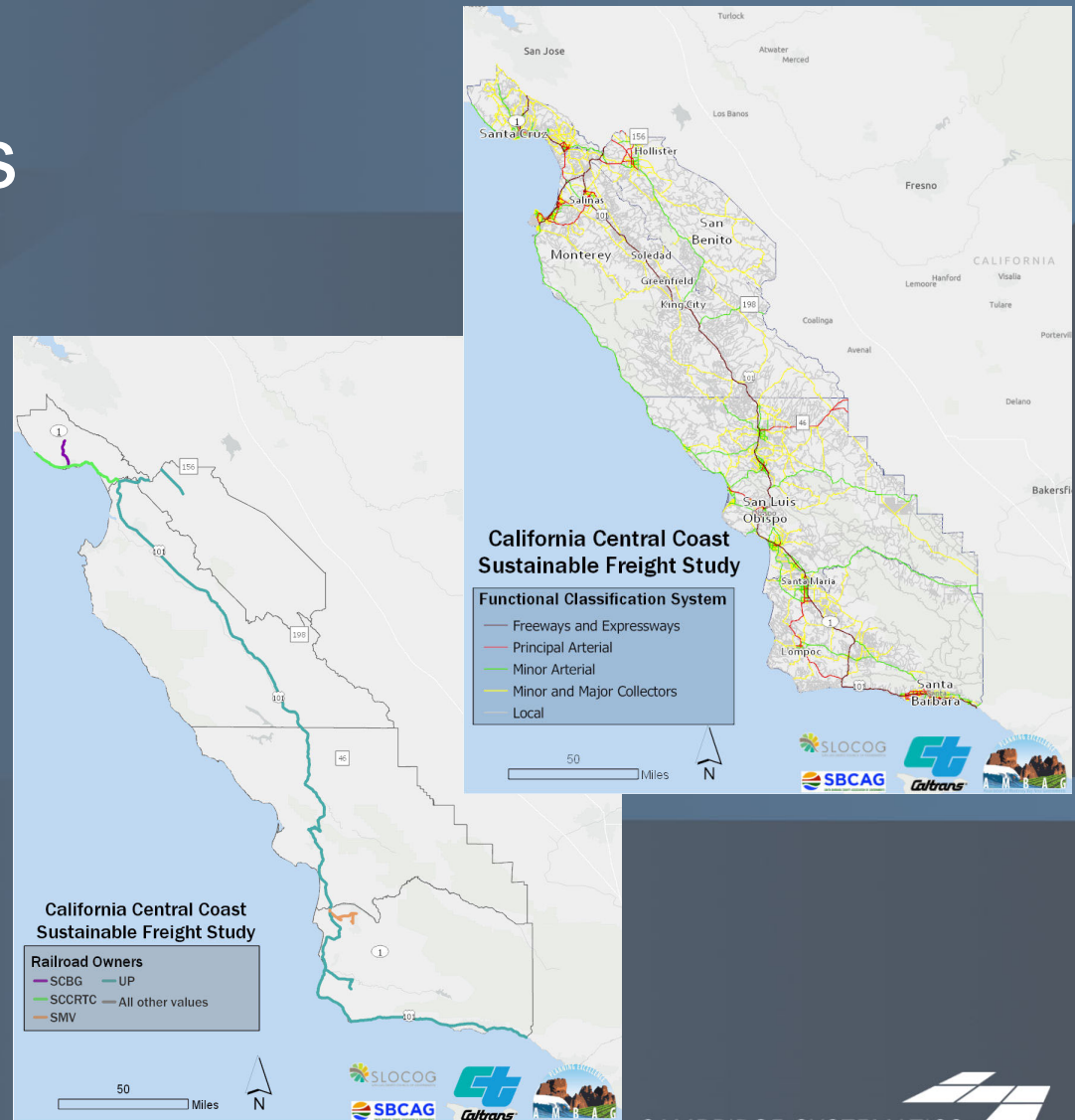
- Analysis of regional sociodemographic trends and trends in employment in freight-dependent industries

Supply Chains and Freight Activity Patterns

- Overview of a selection of key industry supply chains and truck activity patterns using GPS data

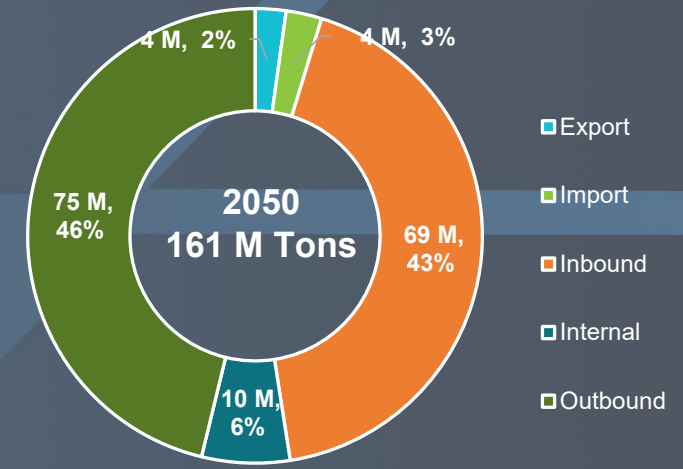
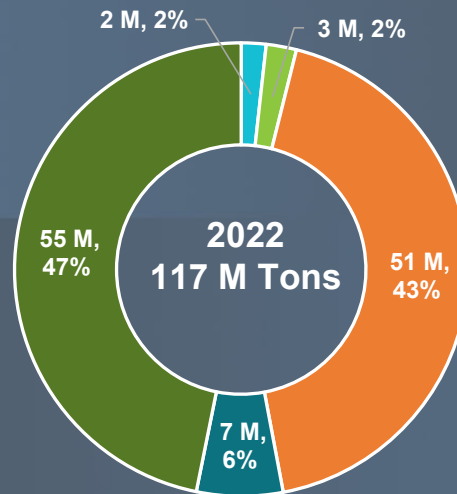
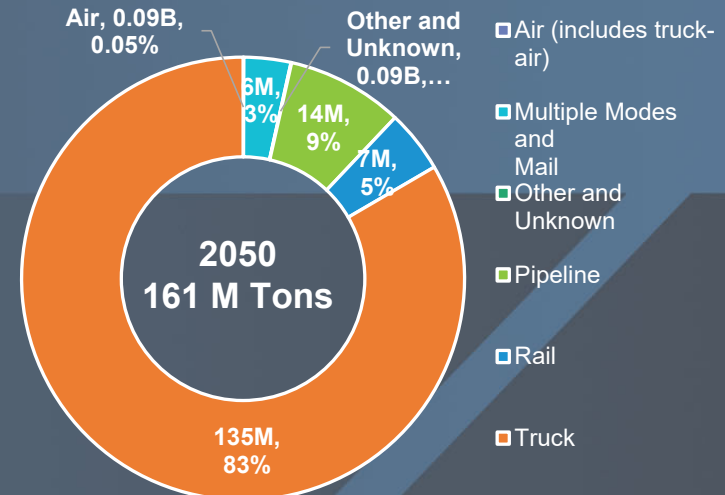
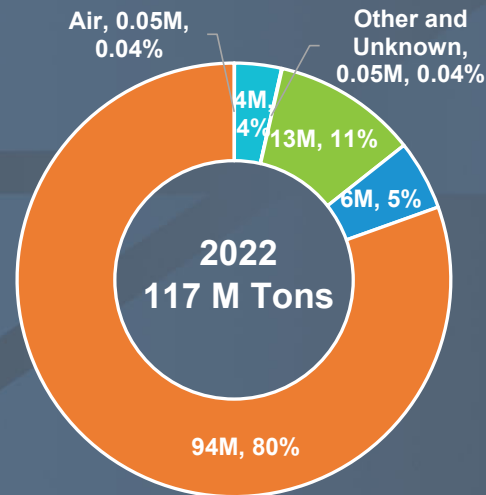
Freight Modal Profiles

- **Highways**
 - » Nearly 28,000 miles of roadways
 - » 1,343 bridges
 - » 545 intelligent transportation system (ITS) devices
 - Changeable Message Signs, Closed-Circuit Television Cameras, and traffic collection devices
 - » 11 truck parking facilities providing 334 spaces
- **Rail**
 - » 488 track miles of rail primarily owned by Union Pacific
- **Air Cargo**
 - » 4 commercial airports, but none providing cargo service



Freight Demand 2022 and 2050

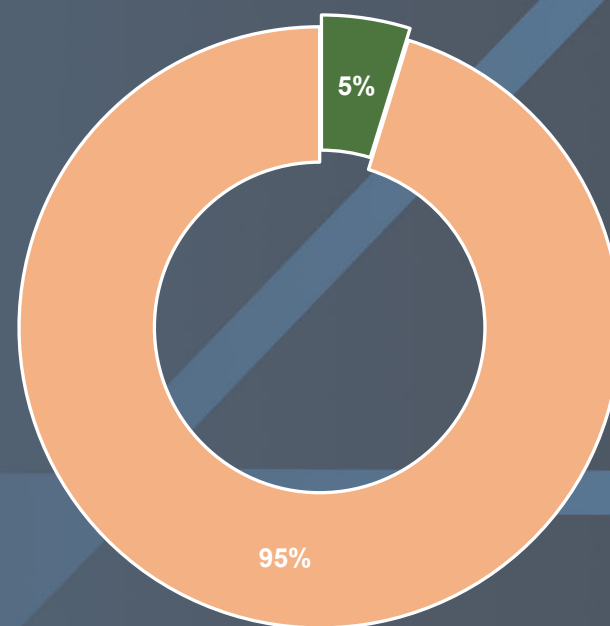
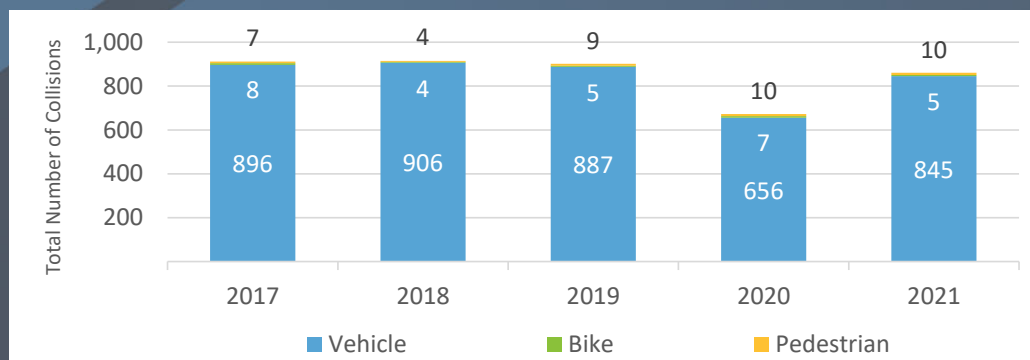
- In 2022, 117 million tons of goods worth \$146 billion were transported to, from, and within the region.
- By 2050, freight activity will reach 161 million tons valued at \$239 billion – an increase of 38% by weight and 64% by value.
- Trucks carry 80% of freight through the region.
- About 47% of freight travels domestic outbound from the region versus 43% domestic inbound.



Roadway Safety

- 4,259 truck-involved collisions occurred between 2017-2021.
 - » Less than 2% involved bikes or pedestrians
 - » 203 truck-involved collisions resulted in victims being Killed or Severely Injured (KSI)
 - » On average, 13 people are killed each year in truck-involved collisions.

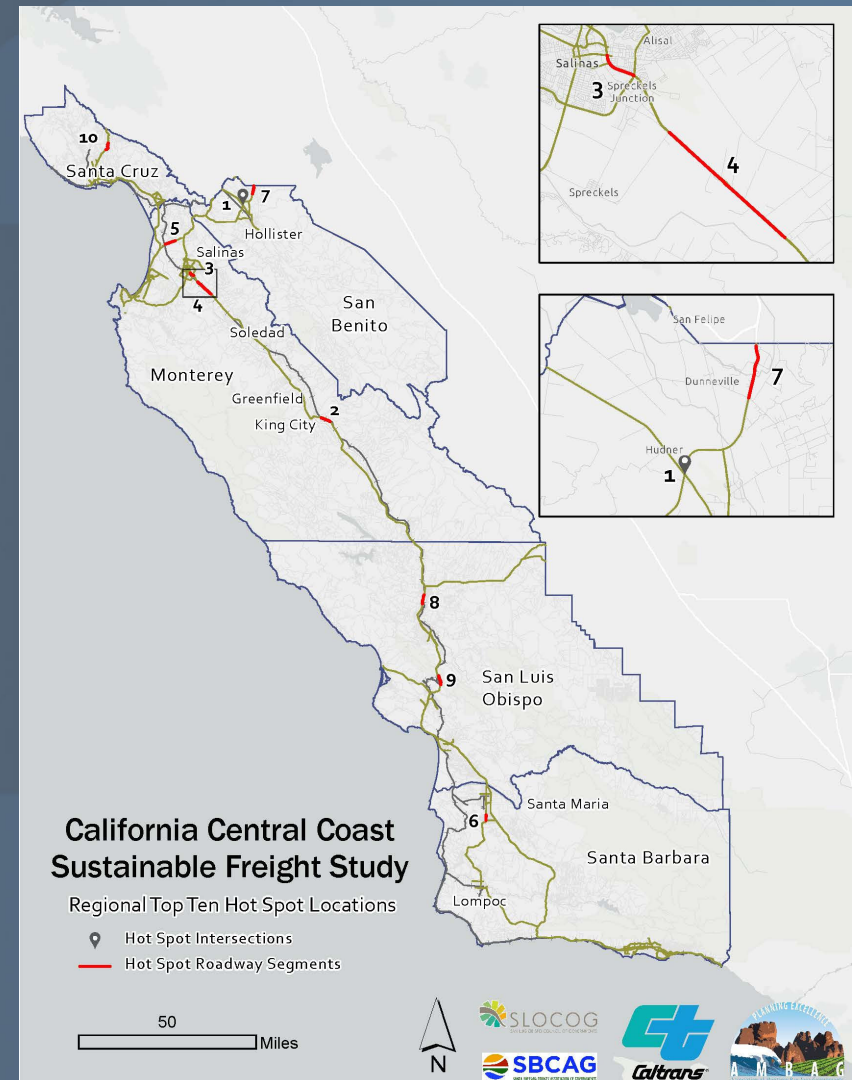
Truck-Involved Collisions by Year, 2017-2021



■ KSI Collisions ■ Non-KSI Collisions

Truck-Involved Crash Hot Spots, 2017-2021

Top 10 Rank	Collision Hot Spot Locations	Length (mi.)	Collisions		Disadvantaged Community
			Total	KSI	
Santa Cruz County					
10	SR 17 between Vine Hill Road and Eagle Crest Drive	1.8	4	2	-
-	SR 129 between SR 1 and Lakeview Road	3.7	6	3	State & Federal
-	SR 1 and Main Street between San Andreas Road and Green Valley Road	6.4	10	3	-
Monterey County					
2	U.S. 101 between King City and Welby	2.3	6	5	-
3	U.S. 101 between Alisal Street and Sanborn Road	1.2	7	2	State & Federal
4	U.S. 101 between Harris Road and Potter Road	5.1	33	8	-
5	SR 156 between Castroville Boulevard and Oak Hills Drive	2.9	11	4	Federal
San Benito County					
1	Signalized Intersection of SR-156 & SR-25	-	17	4	Federal
7	SR-156 between Fairview Road and Barnheisel Road	2.3	5	3	Federal
-	U.S. 101/SR 156 between Chittenden Road and Rocks Road	3.2	10	3	-
San Luis Obispo County					
8	U.S. 101 between Niblick Road and Volpi Ysabei Road	2.6	11	3	-
9	U.S. 101 between West Cuesta Ridge Trailhead and Old Stage Coach Road	2.6	9	3	-
-	SR-46 between Davis Road and Antelope Road	4.7	8	5	-
Santa Barbara County					
6	SR-135 between Foster Road and Clark Avenue	3.0	11	3	Federal
-	U.S. 101 between Micheltorena St and Milpas Street	1.6	5	2	-
-	U.S. 101 between Los Carneros Road and San Marcos Pass Road	6.2	16	2	State



Public Engagement

Public Engagement To-Date

➤ Industry Discussions

- » One from each county, three from Monterey County

➤ Online Survey and Map

- » Identify where challenges are located on the network
- » Provide feedback on the region's most pressing challenges

Key Messages To-Date

Congestion

- Impacts viability of produce
- New distribution centers face access and congestion issues moving goods in from the ports
- US 101 – delays and safety risks due to congestion and lack of grade separations

Policy Challenges

- Jan. 1, 2024 electronic logging device rule for agriculture will exacerbate delays with moving time-sensitive crops
- Zero Emissions mandate – subsidies and increased weight limits needed

Supply Chains

- Lack of transload facilities
- Shortage of truck parking
- Labor shortage for truckers and train crews

Infrastructure Conditions

- Poor bridge and pavement conditions

<https://storymaps.arcgis.com/stories/930e6cb3513e493dbf5bcf239292bd82>

Next Steps

Next Steps

- Public Engagement
 - » Freight Industry Interviews
 - » Online Survey and Comment Map
- Analyze Freight Performance, Identify Potential Projects and Strategies
 - » Freight Performance Measures
 - » Truck Bottlenecks and Highway Capacity Needs
 - » Land Use and Environment + Analysis of Centers of Activity
 - » Identification and Prioritization of Projects and Strategies + Alternatives Evaluation + Long Term Implementation Plan