

Highway 1/Seg 12 Update

Sarah Christensen P.E., RTC Staff
Feb 1, 2024



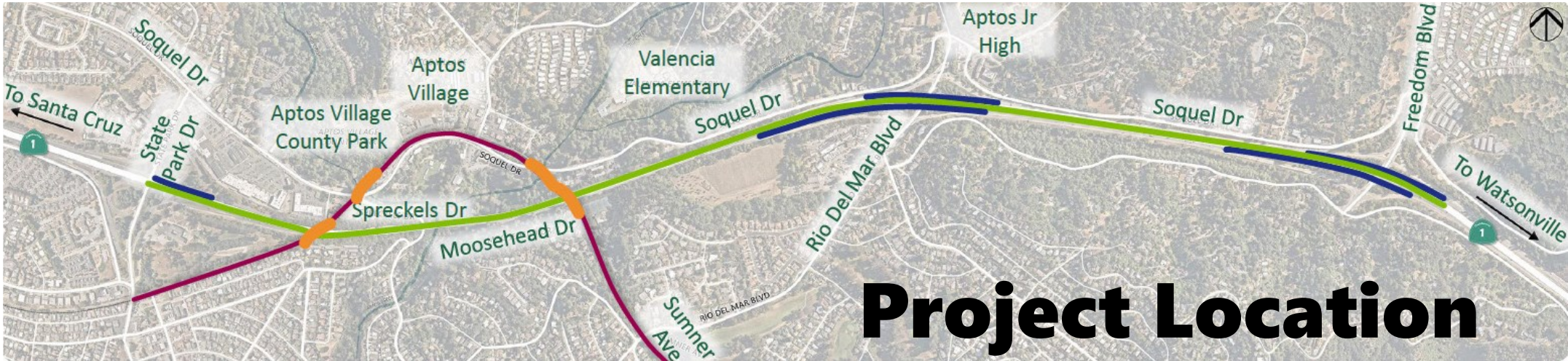


Today's Presentation

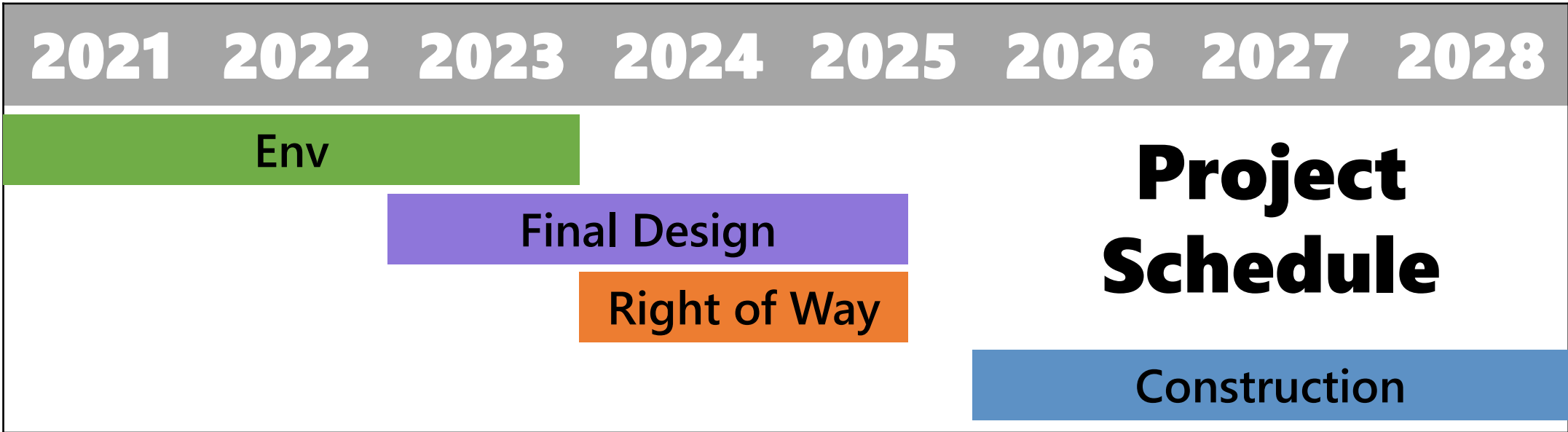
- **Receive an update on the project**
- **Review proposed changes**
 - Aptos Creek Bridge Type & Community Survey
- **Staff Recommendation**
- **Questions/Discussion**



Project Update



Project Location



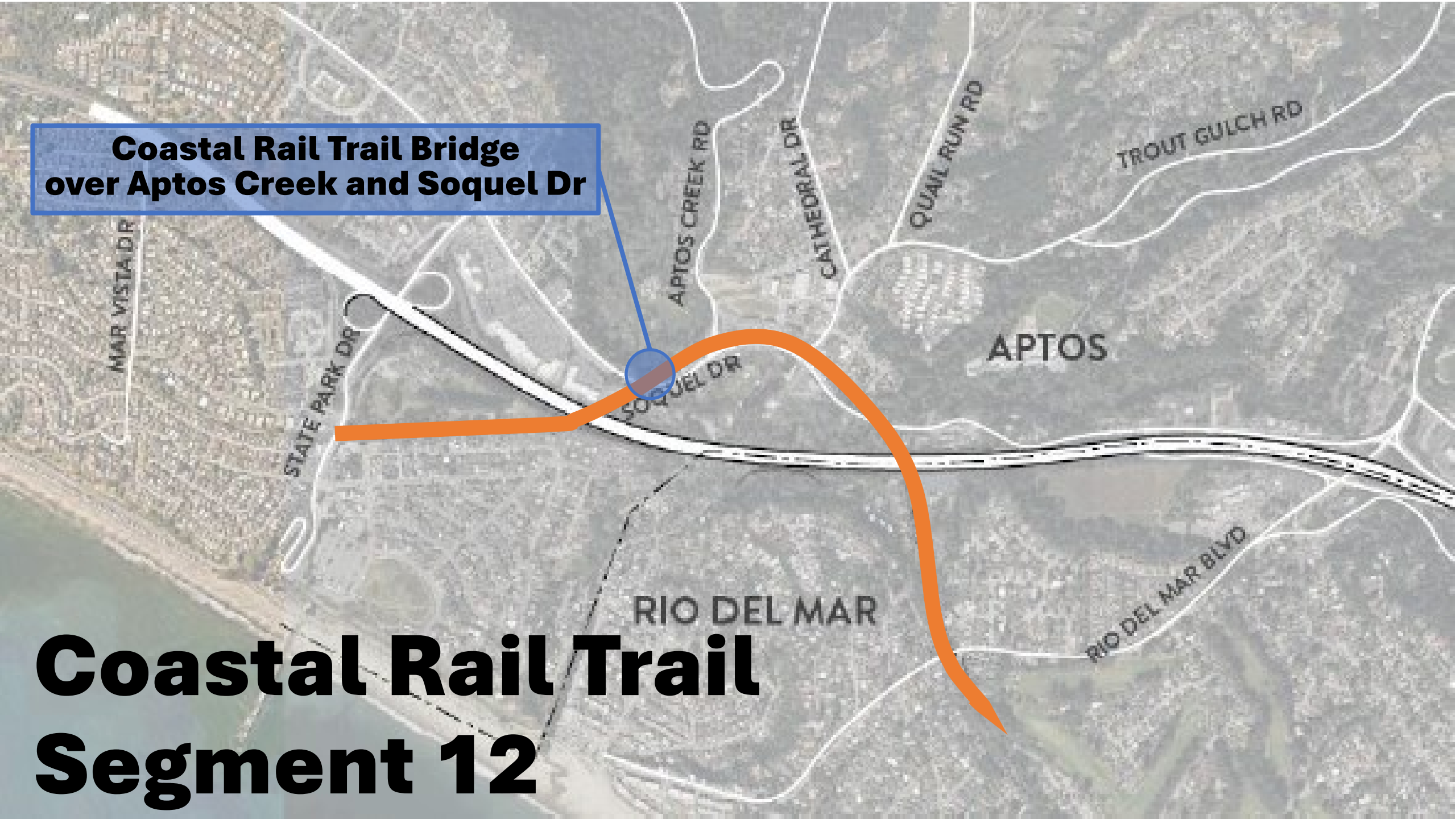


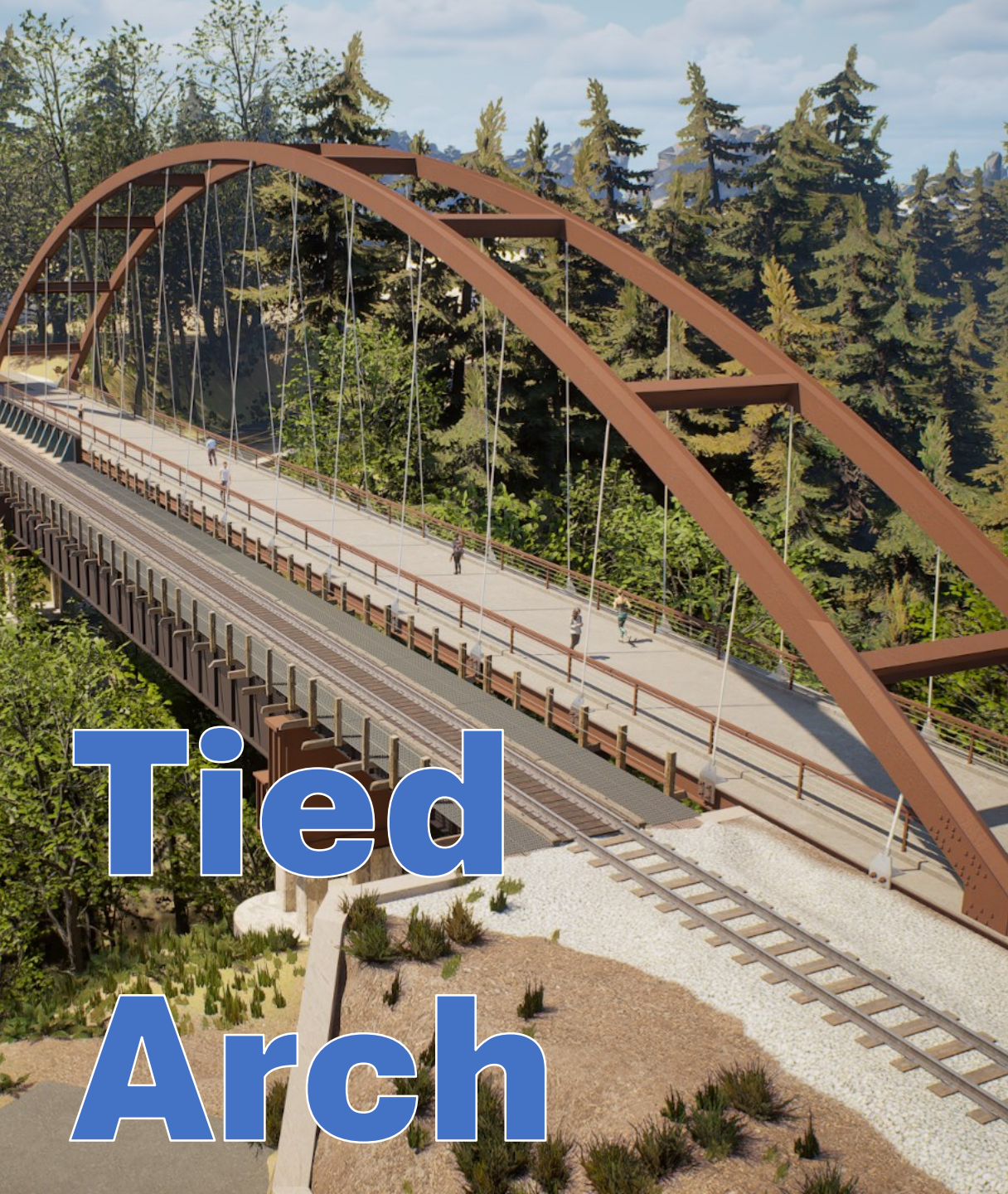
Changes to Project Scope

- **Structure-related analysis and design**
 - Single-span structure - Aptos Creek/Soquel Dr
 - Tsunami analysis - Hwy 1 bridge over Aptos Creek
 - Coordination of Public Art in response to aesthetic outreach for structures
- **Grant application support**
- **Bus on Shoulder Extension**

**Coastal Rail Trail Bridge
over Aptos Creek and Soquel Dr**

Coastal Rail Trail Segment 12





**Tied
Arch**



**Stress
Ribbon**



Tied Arch





Stress Ribbon







Which bridge type do you like?



Scan the QR code or visit

www.surveymonkey.com/r/B58LRY2

and take the survey

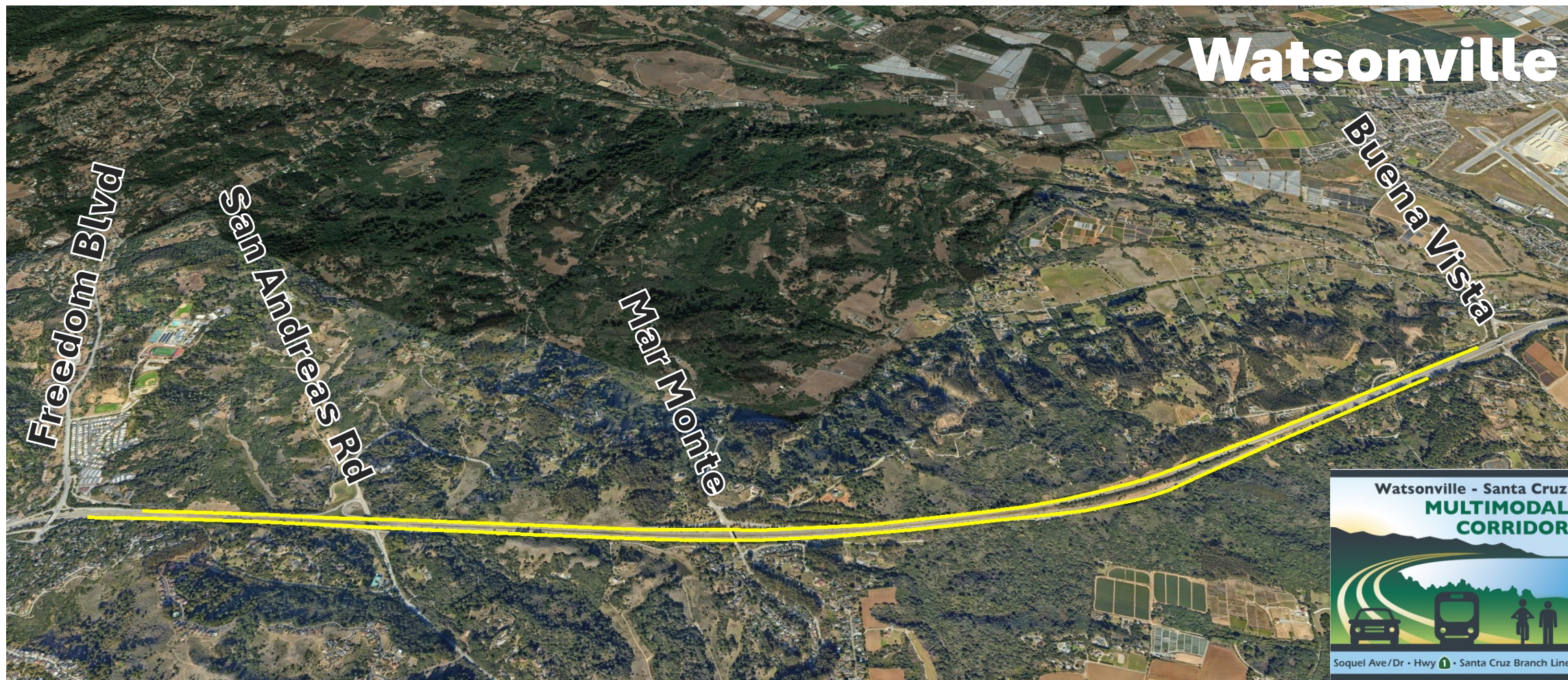
Please provide your input by February 9th, 2024



Bus on Shoulder Extension



Bus on Shoulder Extension





Bus on Shoulder Extension

- Extends the 8-mile facility an additional 3 miles to the south toward Watsonville
- A “true” bus on shoulder configuration
- Requires an update to the Concept of Operations
- Improves travel time and reliability for Metro’s cross-county bus service



Staff Recommendation

Staff recommends the RTC authorize amendment 4 to contract TP2122 in the amount of \$1,299,972 for a not to exceed contract value of \$13,728,717 for the Highway 1 and Coastal Rail Trail Segment 12 Project

An aerial, high-angle view of a multi-lane highway with traffic. The road is flanked by dense green trees on both sides. In the distance, some white buildings are visible. The text "Questions/Discussion" is overlaid in the center in a large, white, bold font.

Questions/Discussion