



SANTA CRUZ COUNTY TRAFFIC OPERATIONS OVERSIGHT COMMITTEE & SAFE ON 17 TASK FORCE MEETING AGENDA

Date: Wed. March 20, 2024	Dial-In Option: (669) 900-9128
Start Time: 10:00am	Meeting ID: 844 7518 2886
Location: Online via Zoom	Passcode: 217329

1) Call to Order

- a) Introductions

2) Oral Communications

- a) *Any member of the public may address the committee OR speak about something that is not already on the agenda. Speakers are requested to state their name clearly so that their names can be accurately recorded in the minutes of the meeting.*

3) Additions or Deletions to the Agenda

4) Information Items

- a) New extra enforcement contract with CHP
- b) 2023 Safe on 17 Annual Report Update
- c) Freeway Service Patrol Update
- d) Major Incidents (News Articles)
- e) Public Comments

5) California Highway Patrol – Safe on 17 Updates

- a) Review collision, citation, and extra enforcement hours.
 - i) CHP Santa Cruz
 - ii) CHP San Jose
- b) Upcoming Highway 17 Extra CHP Enforcement Hours
- c) Upcoming Public Information Activities

6) Caltrans District 5 Highway 17 Project Updates

- a) SR-17 Resiliency and Adaptation Plan
- b) Construction Projects
- c) Maintenance Projects/Updates



7) Caltrans District 4 Highway 17 Project Updates

- a) Construction Projects
- b) Maintenance Projects/Updates

8) Traffic Operations Systems Updates

- a) Transportation Management Center
- b) Communications Center
- c) Hwy 1 and 17 TOS Equipment
- d) QuickMap
- e) Closed Circuit TVs
- f) Traffic Detection Equipment

9) Discussion

10) Next Meeting Date

- a) Wednesday, September 18, 2024, at 10:00 am via Zoom.



**Highway 1 Bridge Demolition Project
24-Hour Full Closure of Highway 1
Between Bay/Porter and Park Avenue in
Capitola
Saturday, March 23 at 7 PM Through Sunday,
March 24 at 7 PM**

Caltrans is scheduled to close both directions of Highway 1 for 24 hours for crews to demolish the Capitola Avenue overcrossing. This work is weather dependent.

Northbound Highway 1 Detour: Motorists traveling northbound on Highway 1 will be directed off at the Park Avenue exit, will travel north on Soquel Drive, and return to northbound Highway 1 at the Bay/Porter onramp.

Southbound Highway 1 Detour: Motorists traveling southbound on Highway 1 will be directed off at the Bay/Porter exit, will travel south on Soquel Drive, and return to southbound Highway 1 at the Park Avenue onramp.

Regional travelers from the Bay Area, Central Valley, Salinas River Valley, and the greater Highway 1 coast are advised that there may be significant delays associated with this closure. US 101 remains a viable alternative route for travel during this closure.

This closure is associated with an ongoing project to construct north and southbound auxiliary lanes and bus-on-shoulder improvements on Highway 1 between the Bay Avenue/Porter Street and State Park Drive interchanges. This project will also construct a bicycle/pedestrian overcrossing at Mar Vista Drive and replace the existing Capitola Avenue overcrossing at Highway 1.

Updated project information for the improvements on Highway 1 between the Bay Avenue/Porter Street and State Park Drive interchanges can be found on the Santa Cruz County Regional Transportation Commission's website at: <https://sccrtc.org/projects/streets-highways/hwy1/bayporter-statepark/>

About the Santa Cruz County Regional Transportation Commission:
The Santa Cruz County Regional Transportation Commission (RTC) delivers transportation solutions for a vibrant, sustainable, and equitable community. To receive regular information about RTC projects, please sign up here: <http://scrtc.org/about/esubscriptions/>.

Highway 1 24-Hour Closure Detour Map



En Español

PROYECTO DE DEMOLICIÓN DEL PUENTE DE LA RUTA ESTATAL 1

CIERRE TOTAL 24 HORAS DE LA AUTOPISTA 1 ENTRE BAY/PORTER Y PARK AVENUE EN CAPITOLA DEL SÁBADO 23 DE MARZO A LAS 7 P.M. AL DOMINGO 24 DE MARZO A LAS 7 P.M.

Caltrans está programado para cerrar ambas direcciones de la Ruta Estatal 1 durante 24 horas para que las cuadrillas demuelan el paso elevado de Capitola Ave. Este trabajo depende del clima.

Desvío de la autopista 1 en dirección norte: Los automovilistas que viajen hacia el norte por la Ruta Estatal 1 serán dirigidos a la salida de Park Ave., viajarán hacia el norte por Soquel Dr. y regresarán a la Ruta Estatal 1 en dirección norte en la rampa de entrada Bay/Porter.

Desvío de la autopista 1 en dirección sur: Los automovilistas que viajen en dirección sur por la Ruta Estatal 1 serán dirigidos a la salida Bay/Porter, viajarán hacia el sur por Soquel Dr. y regresarán a la Ruta Estatal 1 en dirección sur en la rampa de entrada de Park Ave.

Se informa a los viajeros regionales del Área de la Bahía, el Valle Central, el Valle del Río Salinas y la costa de la Ruta Estatal 1 que puede haber retrasos significativos asociados con este cierre. La US 101 sigue siendo una ruta alternativa viable para viajar durante este cierre.

Este cierre está asociado con un proyecto en curso para construir carriles auxiliares en dirección norte y sur y mejoras para autobuses en el arcén en la Ruta Estatal 1 entre los intercambios de Bay Ave./Porter St. y State Park Drive. Este proyecto también construirá un paso elevado para bicicletas y peatones en Mar Vista Dr. y reemplazará el cruce elevado existente de Capitola Ave. en la autopista 1.

La información actualizada del proyecto para las mejoras en la Ruta Estatal 1 entre los intercambios de Bay Ave./Porter St. y State Park Drive se puede encontrar en el sitio web de la Comisión Regional de Transporte del Condado de Santa Cruz en: <https://sccrtc.org/projects/streets-highways/hwy1/bayporter-statepark/>.

Acerca de la Comisión de Transporte Regional del Condado de Santa Cruz: *Acerca de la Comisión Regional de Transporte del Condado de Santa Cruz: La Comisión Regional de Transporte (RTC) del Condado de Santa Cruz ofrece soluciones de transporte para una comunidad vibrante, sostenible y equitativa. Para recibir información periódica sobre los proyectos de RTC, regístrese aquí: <http://sccrtc.org/about/esubscriptions/>.*

www.sccrtc.org

[Website](#) [Funding & Planning](#) [Projects](#) [Services](#) [About the RTC](#)



SCCRTC | 1101 Pacific Avenue, Suite 250, Santa Cruz, CA 95060 www.sccrtc.org

[Unsubscribe anaranjo@sccrtc.org](mailto:anaranjo@sccrtc.org)

[Update Profile](#) | [Constant Contact Data Notice](#)

Sent by info@sccrtc.ccsend.com powered by



Ben Lomond man killed in Highway 17 crash

 santacruzsentinel.com/2023/01/09/ben-lomond-man-killed-in-highway-17-crash/

SANTA CRUZ — A 61-year-old Ben Lomond man was killed Sunday while driving on Highway 17 when he crashed into a metal pole, according to the California Highway Patrol.

The CHP said Thomas Jacobson was traveling northbound on Highway 17 approaching El Rancho Road shortly before 9 a.m. in a 1991 Honda sedan when he veered off the road for an unknown reason.

Jacobson was treated for major injuries and pronounced dead at the scene, according to the CHP.

CHP investigators continued to investigate the cause of the crash Monday and had not yet determined if drugs and/or alcohol were considered factors.

Woman killed in Highway 17 crash near Santa Cruz

 santacruzsentinel.com/2023/03/21/at-least-one-dead-after-highway-17-crash-near-santa-cruz/

SANTA CRUZ — A 73-year-old Watsonville woman died Tuesday morning after a traffic collision on northbound Highway 17 between Santa Cruz and Scotts Valley, according to the California Highway Patrol.

During heavy rainfall shortly before 6 a.m., officers responded to the solo-vehicle crash, just south of El Rancho Drive. The driver was traveling northbound at an unknown rate of speed on the highway when her 2003 Acura RSX sport coupe veered off the roadway for an unknown reason, according to the CHP. The Acura crashed into a metal pole and overturned in a gulley near the off-ramp, authorities said.

Despite life-saving efforts by emergency responders, the woman was pronounced dead at the scene, according to the CHP.

The collision forced closures of the off-ramp at El Rancho Drive and the northbound right lane, but they were reopened around 9 a.m., according to Caltrans.

It was not immediately known if alcohol, drugs or weather were factors in the crash.

Santa Cruz Sentinel reporter Jessica A. York contributed to this report.

Two people struck and killed after exiting vehicle on Highway 17 near Campbell

 santacruzsentinel.com/2023/05/27/deadly-highway-17-crash-leaves-lanes-blocked-near-downtown-campbell-2/

By [Austin Turner](#) | aturner@bayareanewsgroup.com | Bay Area News Group

PUBLISHED: May 27, 2023 at 11:45 a.m. | UPDATED: May 27, 2023 at 11:47 a.m.

CAMPBELL — A crash on Highway 17 near downtown Campbell early Friday killed two people after they exited their vehicle on highway lanes in the early-morning darkness, according to the California Highway Patrol.

The collision was reported around 4:12 a.m. near the Hamilton Avenue exit in the southbound direction, according to the CHP. According to a news release, the two people who were struck and killed had been in a 2000 Mercedes, but the vehicle came to a stop in the right lanes for unknown reasons.

The two people in the Mercedes exited the vehicle; a 2015 Fiat, also traveling southbound, swerved to avoid the Mercedes and struck the two people.

One of the people struck, a man, was pronounced dead at the scene at 6:12 a.m., according to the CHP. The other person, a woman, was taken to a hospital and pronounced dead a short time later. Their identities will be released pending confirmation and notification of their next of kin.

The driver of the Fiat, a 22-year-old San Jose man, suffered minor injuries. The crash remains under investigation; authorities said it was not clear if excessive speed or alcohol or drug use were factors.

Authorities have repeatedly cautioned drivers and passengers to stay inside disabled vehicles until help arrives. Three people were killed earlier this week when they exited their vehicles and were struck by other cars after a crash on Highway 101 in Sunnyvale.

All lanes were temporarily closed on southbound Highway 17, but were reopened for traffic by about 7 a.m.

Monterey man killed in solo Santa Cruz crash

 santacruzsentinel.com/2023/08/21/monterey-man-killed-in-solo-santa-cruz-crash/

SANTA CRUZ — A 77-year-old Monterey man died early Monday after he was involved a solo crash between northbound Highway 1 and Highway 17.

The California Highway Patrol was called around 4:30 a.m. to the Highway 17 transition ramp, where a silver 2004 Crown Victoria had struck a tree. The man, whose identity was not immediately released pending notification of next of kin, suffered major injuries and was pronounced dead at the scene, despite lifesaving efforts, according to the CHP.

The CHP did not have an immediate cause of the crash and was unable to say how fast the man was driving. Officials said it was unknown if alcohol and/or drugs were factors in the crash.

Santa Cruz CHP Collision Summary for SR-17

		1998	1999	2000	2001	2002	2003	2004	2005	2006	2007	2008	2009	2010	2011	2012	2013	2014	2015	2016	2017	2018	2019	2020	2021	2022	2023	2024
JANUARY	PDO	40	28	17	14	18	26	21	32	34	19	22	16	24	11	11	11	9	10	56	46	49	44	11	21	10	12	11
	INJURY	27	10	8	5	9	12	6	6	10	9	6	9	13	9	10	3	3	4	14	20	22	21	9	7	2	7	9
	FATAL	1	1	0	0	0	1	0	0	0	0	0	1	1	0	0	0	1	0	0	0	0	0	0	0	0	1	0
	TOTAL	68	39	25	19	27	39	27	38	44	28	28	26	38	20	21	14	13	14	70	66	71	65	20	28	12	20	20
FEBRUARY	PDO	36	19	43	14	17	35	41	45	25	28	31	16	20	15	23	8	32	36	17	23	17	46	17	7	13	15	19
	INJURY	6	9	9	5	4	9	16	17	4	10	9	15	4	7	10	5	14	7	5	11	11	21	11	5	5	10	9
	FATAL	0	1	0	0	0	0	1	0	0	0	0	0	0	0	0	0	0	0	0	0	1	1	0	0	0	0	0
	TOTAL	42	29	52	19	21	44	58	62	29	38	40	31	24	22	33	13	46	43	22	34	29	68	28	12	18	25	28
MARCH	PDO	21	25	26	22	29	23	11	38	35	18	17	13	26	26	30	16	20	17	55	25	56	41	18	10	12	22	
	INJURY	11	12	6	5	11	9	7	16	14	2	6	13	7	14	20	6	13	8	22	11	30	18	2	6	8	4	
	FATAL	0	0	0	0	0	0	0	0	0	0	0	0	0	1	0	0	0	0	0	0	0	0	0	1	1	0	
	TOTAL	32	37	32	27	40	32	18	54	49	20	23	26	33	40	51	22	33	25	77	36	86	59	20	16	21	27	0
APRIL	PDO	39	27	13	24	22	59	16	45	41	22	20	18	28	18	15	13	19	18	31	48	20	25	7	10	14	12	
	INJURY	14	8	9	5	7	16	4	11	11	7	10	12	6	4	9	10	8	7	9	16	7	11	3	2	5	7	
	FATAL	1	0	0	0	0	0	0	0	0	0	0	0	0	0	0	0	0	0	0	0	0	0	0	0	0	0	
	TOTAL	54	35	22	29	29	75	20	56	52	29	30	30	34	22	24	23	27	25	40	64	27	36	10	12	19	19	0
MAY	PDO	43	13	25	19	13	24	15	39	16	24	10	12	26	18	11	11	16	23	29	16	12	26	13	10	8	15	
	INJURY	25	9	15	13	7	11	5	13	8	9	5	16	8	7	6	8	9	7	10	10	11	5	1	4	8	9	
	FATAL	1	1	0	1	0	0	0	0	1	0	0	0	0	0	0	0	0	0	0	0	0	0	0	0	0	0	
	TOTAL	69	23	40	33	20	35	20	52	25	33	15	28	34	25	17	19	25	30	39	26	23	31	14	14	16	24	0
JUNE	PDO	23	12	15	14	11	23	6	24	13	15	10	13	11	9	14	11	11	14	18	20	10	22	15	7	3	12	
	INJURY	11	5	3	2	6	4	2	3	6	1	6	6	4	9	10	9	6	4	10	13	10	10	4	5	3	8	
	FATAL	1	0	0	1	0	1	0	0	0	0	0	0	0	0	0	1	0	0	0	0	0	0	1	0	1	0	
	TOTAL	35	17	18	17	17	28	8	27	19	16	16	19	15	18	24	21	17	18	28	33	20	32	19	13	6	21	0
JULY	PDO	19	8	15	14	20	18	14	9	16	18	14	10	11	19	24	9	12	15	15	22	11	19	12	10	13	5	
	INJURY	5	7	7	8	5	4	5	5	4	4	6	6	9	5	9	10	9	7	8	9	9	9	6	10	11	7	
	FATAL	0	1	0	0	0	1	0	1	0	1	0	0	0	0	0	0	0	0	0	0	0	0	0	0	1	0	
	TOTAL	24	16	22	22	25	23	19	15	20	23	20	16	20	24	33	19	21	22	23	31	20	28	18	20	25	12	0
AUGUST	PDO	14	11	22	10	5	17	20	6	16	11	15	8	11	11	9	8	12	14	28	13	13	13	11	11	10	9	
	INJURY	10	2	7	7	4	7	7	4	5	4	4	1	5	2	4	4	5	4	7	3	8	3	7	6	8	7	
	FATAL	0	0	0	0	0	0	0	0	0	0	0	0	0	0	0	0	0	0	0	0	0	0	0	0	0	0	
	TOTAL	24	13	29	17	9	24	27	10	21	15	19	9	16	13	13	12	17	18	35	16	21	16	18	17	18	16	0
SEPTEMBER	PDO	24	16	20	16	12	12	13	4	13	9	5	8	11	7	14	14	22	14	24	22	11	15	8	11	17	10	
	INJURY	13	4	8	4	8	1	6	6	4	3	9	7	7	7	4	5	9	11	8	11	9	4	2	9	4	5	
	FATAL	1	0	0	0	1	0	0	0	0	0	0	0	0	0	0	0	0	0	0	0	0	0	0	0	0	0	
	TOTAL	38	20	28	20	21	13	19	10	17	12	14	15	18	14	18	19	31	25	32	33	20	19	10	20	21	15	0
OCTOBER	PDO	17	15	13	20	16	17	44	27	13	21	13	9	12	25	15	17	19	15	89	26	21	19	19	25	6	20	
	INJURY	4	11	8	2	5	9	6	12	3	9	3	5	13	8	10	4	14	7	20	9	8	9	6	8	3	2	
	FATAL	0	0	0	0	0	0	0	0	0	0	0	0	0	0	0	0	0	0	0	0	0	0	0	0	0	0	
	TOTAL	21	26	21	22	21	26	50	39	16	30	16	14	25	33	25	21	33	22	109	35	29	28	25	33	9	22	0
NOVEMBER	PDO	31	29	16	26	23	28	21	47	36	11	19	13	27	16	29	20	39	15	48	30	36	20	18	8	19	16	
	INJURY	10	10	8	13	10	9	8	13	12	8	5	7	11	6	8	3	10	6	13	12	8	9	4	8	2	3	
	FATAL	0	0	0	0	1	1	0	0	0	0	0	0	0	0	0	0	0	0	0	0	0	0	0	1	0	0	
	TOTAL	41	39	24	39	34	38	29	60	48	19	24	20	38	22	37	23	49	21	61	42	44	29	22	16	22	19	0
DECEMBER	PDO	5	13	9	28	48	60	43	43	21	34	21	16	45	7	30	13	20	49	52	16	22	19	17	18	18	15	
	INJURY	13	4	4	11	15	22	10	17	3	19	5	10	16	6	8	2	9	21	19	5	10	9	2	11	12	12	
	FATAL	0	0	0	0	0	0	0	2	0	0	0	1	0	0	0	0	0	0	0	0	0	0	0	0	0	0	
	TOTAL	18	17	13	39	63	82	53	62	24	53	26	27	61	13	38	15	29	70	71	21	32	28	19	29	30	27	0
TOTAL PDO:		312	216	234	221	234	342	265	359	279	230	197	152	252	182	225	151	231	240	462	3							

San Jose Area CHP Collision Summary for SR-17

		1998	1999	2000	2001	2002	2003	2004	2005	2006	2007	2008	2009	2010	2011	2012	2013	2014	2015	2016	2017	2018	2019	2020	2021	2022	2023
JANUARY	PDO	53	25	24	13	9	12	18	11	19	11	8	5	9	17	6	8	14	15	18	24	39	35	17	16	9	21
	INJURY	17	15	8	2	2	5	8	3	2	6	5	4	4	3	3	0	3	4	7	13	19	24	5	13	5	14
	FATAL	0	0	0	0	0	0	1	0	0	0	0	0	0	0	0	0	1	0	0	0	0	1	0	0	0	0
	TOTAL	70	40	32	15	11	17	27	14	21	17	13	9	13	20	9	8	18	19	25	37	58	60	22	29	14	35
FEBRUARY	PDO	31	23	32	7	11	8	11	10	7	14	14	12	6	11	8	15	16	10	13	35	19	21	9	12	7	27
	INJURY	6	14	10	2	5	2	7	5	4	6	6	6	5	2	3	6	7	9	7	9	8	13	5	4	8	7
	FATAL	0	0	0	0	0	0	0	0	0	0	0	0	0	0	0	0	0	0	0	0	0	1	0	0	0	0
	TOTAL	37	37	42	9	16	10	18	15	11	20	20	18	11	13	11	21	23	19	20	44	27	35	14	16	15	34
MARCH	PDO	29	18	20	20	5	17	10	19	13	11	5	14	11	17	12	14	12	22	45	29	41	32	15	22	14	47
	INJURY	18	9	7	5	5	5	9	3	3	3	3	2	5	4	1	8	7	9	14	16	22	21	15	13	5	21
	FATAL	0	0	1	0	0	0	0	0	0	0	0	0	0	0	0	0	0	0	1	0	0	0	1	0	0	1
	TOTAL	47	27	28	25	10	22	19	22	16	14	8	16	16	21	13	22	19	31	60	45	63	53	31	35	19	69
APRIL	PDO	24	15	23	12	16	16	9	11	15	5	8	10	9	10	16	10	14	26	24	33	23	17	1	14	20	17
	INJURY	11	7	3	3	4	7	5	4	7	7	3	5	6	3	5	9	8	7	9	21	9	6	3	4	10	9
	FATAL	0	0	0	0	0	0	0	0	1	0	1	0	0	0	1	0	0	0	1	0	0	0	1	0	0	0
	TOTAL	35	22	26	15	20	23	14	15	23	12	12	15	15	13	22	19	22	33	34	54	32	23	5	18	30	26
MAY	PDO	40	16	27	16	9	5	13	13	10	5	5	16	11	10	11	2	14	25	16	25	7	19	10	11	12	13
	INJURY	14	3	10	5	3	2	6	6	7	0	7	5	4	4	2	5	5	10	10	9	8	12	10	6	7	8
	FATAL	0	0	0	0	0	0	1	0	0	0	0	0	0	0	0	0	0	0	0	0	0	0	0	0	0	0
	TOTAL	54	19	37	21	12	7	20	19	17	5	12	21	15	14	13	7	19	35	26	34	15	32	20	17	19	21
JUNE	PDO	19	16	17	12	17	10	6	9	13	9	3	13	15	16	20	12	8	19	18	17	22	9	5	12	13	16
	INJURY	13	7	4	3	4	3	4	3	2	3	4	2	3	4	4	5	4	9	7	4	8	4	5	6	4	6
	FATAL	0	0	0	0	0	0	0	0	0	0	0	0	0	0	0	0	0	0	0	0	0	0	0	1	0	0
	TOTAL	32	23	21	15	21	13	10	12	15	12	7	15	18	20	24	17	12	28	25	21	30	13	10	19	17	22
JULY	PDO	10	16	18	12	15	13	17	15	10	9	8	7	16	14	5	12	14	15	16	12	11	13	11	12	11	11
	INJURY	10	7	5	4	4	4	6	1	5	3	6	2	7	5	8	6	6	10	11	8	4	5	5	7	8	6
	FATAL	0	0	0	1	0	0	0	0	0	0	0	0	1	0	0	0	1	0	0	0	0	0	0	0	0	0
	TOTAL	20	23	23	17	19	17	23	16	15	12	14	9	24	19	13	18	21	25	27	20	15	18	16	19	19	17
AUGUST	PDO	19	23	14	13	15	12	9	13	9	13	10	9	8	14	10	15	11	18	13	6	12	9	10	8	10	14
	INJURY	4	7	5	7	3	6	4	2	1	2	7	2	8	6	4	6	3	5	6	0	8	6	5	4	4	4
	FATAL	0	0	0	1	0	0	1	0	0	0	0	0	0	0	0	0	0	0	0	0	0	0	0	0	0	0
	TOTAL	23	30	19	21	18	18	14	15	10	15	17	11	16	20	14	21	14	23	19	6	20	15	15	12	14	18
SEPTEMBER	PDO	21	12	20	21	3	11	10	6	5	8	10	7	10	9	13	18	17	20	15	18	18	12	6	17	17	19
	INJURY	6	6	10	4	4	5	4	3	0	1	2	0	4	1	4	5	3	8	5	6	6	6	4	8	7	7
	FATAL	0	0	0	0	0	0	0	0	0	0	0	0	0	0	0	0	0	0	0	0	0	0	0	0	0	0
	TOTAL	27	18	30	25	7	16	14	9	5	9	12	7	14	10	17	23	20	28	20	24	24	18	10	25	24	26
OCTOBER	PDO	12	27	14	18	12	19	17	21	13	14	10	8	30	14	12	6	26	25	29	11	20	16	11	16	14	15
	INJURY	11	4	2	7	2	2	5	8	5	6	3	3	2	5	3	5	4	6	18	5	7	6	10	19	6	9
	FATAL	0	0	0	0	0	0	0	0	0	0	0	0	0	0	0	0	0	0	0	1	0	0	1	0	0	0
	TOTAL	23	31	16	25	14	21	22	29	18	20	13	11	32	19	15	11	30	31	47	17	27	22	22	35	20	24
NOVEMBER	PDO	38	31	16	16	10	22	12	11	11	7	20	11	12	9	12	14	17	18	27	42	19	32	17	19	18	28
	INJURY	12	15	4	1	4	6	3	8	6	3	9	1	6	4	4	7	7	9	6	10	13	12	10	6	12	8
	FATAL	0	0	0	0	0	0	0	0	0	0	0	0	0	0	0	0	0	0	0	0	1	0	0	0	1	1
	TOTAL	50	46	20	17	14	28	15	19	17	10	29	12	18	13	16	21	24	27	33	52	33	44	27	25	31	37
DECEMBER	PDO	10	12	15	15	23	20	16	16	10	13	20	11	7	8	10	7	15	24	25	15	21	36	17	24	32	43
	INJURY	7	7	6	5	5	6	6	6	7	4	3	4	7	1	1	3	5	8	21	4	14	31	5	13	11	17
	FATAL	0	0	0	0	0	0	0	0	0	0	0	0	0	0	0	1	0	0	0	0	0	0	1	0	1	0
	TOTAL	17	19	21	20	28	26	22	22	17	17	23	15	14	9	11	11	20	32	46	19	35	67	23	37	44	60
Total PDO:		306	234	240	175	145	165	148	155	135	119	121	123	144	149	135	133	178	237	259	267	252	251	129	183	177	271
Total Injury:		129	101	74	48	45	53	67	52	49	44	58	36	61	42	42	65	62	94	121	105	126	146	82	103	87	116
Total Fatalities:		0	0	1	2	0	0	3	0	1	0	1	0	1	0	1	1	2	0	2	1	1	3	4	1	2	2
Total Collisions:		435	335	315	225	190	218	218	207	185	163	180	159	206	191	178	199	242	331	382	373	379	400	215	287	266	389

Santa Cruz Area CHP SR-17 Citation Summary

Regular Citations

		2004	2005	2006	2007	2008	2009	2010	2011	2012	2013	2014	2015	2016	2017	2018	2019	2020	2021	2022	2023
JANUARY	PCF	637	537	557	275	129	261	287	396	401	368	413	354	201	89	112	259	133	146	281	61
	Other	235	120	192	148	106	92	68	84	68	69	43	26	15	12	12	128	1	0	2	0
	Mechanical	29	58	18	9	3	21	16	30	21	17	73	44	41	15	37	-	48	37	67	17
	Total	901	715	767	432	238	374	371	510	490	454	529	424	257	116	161	387	182	183	350	78
FEBRUARY	PCF	526	392	550	359	166	271	303	420	478	309	325	253	286	78	92	414	248	180	194	116
	Other	183	137	213	102	52	59	65	70	68	63	22	18	68	5	4	150	1	0	3	1
	Mechanical	7	69	9	32	29	7	10	19	19	23	38	51	37	5	9	-	40	39	40	25
	Total	716	598	772	493	247	337	378	509	565	395	385	322	391	88	105	564	289	219	237	142
MARCH	PCF	671	595	501	451	252	262	322	351	422	354	273	341	286	60	113	225	150	196	144	103
	Other	252	173	202	117	66	73	44	42	86	111	29	33	46	13	19	0	0	3	2	1
	Mechanical	20	58	75	42	32	19	21	29	11	20	40	38	27	7	19	10	27	22	43	35
	Total	943	826	778	610	350	354	387	422	519	485	342	412	359	80	151	235	177	221	189	139
APRIL	PCF	510	479	428	285	191	312	324	431	283	365	346	290	278	100	187	184	44	130	163	149
	Other	228	154	229	76	56	63	86	49	88	29	22	22	72	10	57	0	2	12	2	0
	Mechanical	13	46	64	14	24	11	36	23	15	16	36	30	20	10	36	4	7	6	25	12
	Total	751	679	721	375	271	386	446	503	386	410	404	375	370	120	280	188	53	148	190	161
MAY	PCF	568	448	345	369	233	454	429	505	455	444	375	310	296	280	199	247	54	87	165	122
	Other	242	168	63	154	78	85	46	82	77	27	22	32	54	20	22	0	1	7	2	2
	Mechanical	10	53	55	26	47	22	69	14	25	45	22	33	34	12	23	4	31	21	40	25
	Total	820	669	463	549	358	561	544	601	557	516	419	375	384	312	244	251	86	115	207	149
JUNE	PCF	398	640	470	365	271	483	523	391	291	339	303	154	152	102	302	248	47	143	153	95
	Other	215	225	131	152	88	73	42	68	58	29	33	21	54	20	49	0	2	0	2	1
	Mechanical	8	62	10	38	39	9	68	3	13	65	24	55	46	20	66	2	25	3	26	6
	Total	621	927	611	555	398	565	633	462	362	433	360	230	252	142	417	250	74	146	181	102
JULY	PCF	468	359	303	302	266	396	446	378	288	331	220	245	159	232	191	242	76	165	120	86
	Other	255	177	199	110	74	82	38	67	69	35	21	31	62	46	13	0	0	2	1	1
	Mechanical	6	61	13	44	59	7	82	4	8	74	34	50	33	44	29	4	25	5	43	10
	Total	729	597	515	456	399	485	566	449	365	440	275	326	254	322	233	246	101	172	164	97
AUGUST	PCF	447	427	244	346	266	470	498	585	317	477	317	289	106	135	117	179	131	109	176	114
	Other	240	198	206	167	47	89	84	35	78	32	56	27	41	54	40	0	0	5	1	1
	Mechanical	16	68	11	75	27	17	24	18	25	34	55	23	21	24	30	4	37	10	31	11
	Total	703	693	461	588	340	576	606	638	420	543	428	339	168	213	187	183	168	124	208	126
SEPTEMBER	PCF	487	494	359	402	265	424	389	472	334	338	240	284	99	147	370		83	131	121	158
	Other	219	142	148	182	24	105	95	37	58	31	43	31	7	10	163		1	4	0	0
	Mechanical	10	57	12	5	43	18	32	18	19	31	45	36	19	12	-		6	56	17	24
	Total	716	693	519	589	332	547	516	527	411	400	328	351	125	169	533	0	90	191	138	182
OCTOBER	PCF	378	314	328	194	337	322	307	540	457	381	224	229	88	82	400		158	93	156	135
	Other	233	152	155	93	30	79	47	47	57	24	31	33	9	3	350		0	3	4	1
	Mechanical	20	47	8	34	43	9	10	14	15	41	32	36	10	16	-		16	81	29	1
	Total	631	513	491	321	410	410	364	601	529	446	287	298	107	101	750	0	174	177	189	137
NOVEMBER	PCF	512	557	274	209	590	270	267	449	327	319	238	199	123	295	396		226	148	136	100
	Other	217	165	143	65	48	53	80	25	53	31	24	6	16	9	180		0	2	2	0
	Mechanical	18	59	13	47	75	10	15	18	17	47	28	2	16	20	-		7	68	45	11
	Total	747	781	430	321	713	333	362	492	397	397	290	207	155	324	576	0	233	218	183	111
DECEMBER	PCF	383	524	268	215	454	373	209	454	297	264	170	137	75	320	480		99	112	101	45
	Other	140	153	167	100	45	64	65	43	75	24	4	13	24	17	173		2	2	0	0
	Mechanical	23	38	10	39	84	15	11	16	14	42	16	2	9	30	-		7	58	35	40

Santa Cruz Area CHP SR-17 Citation Summary

Regular Citations

	2004	2005	2006	2007	2008	2009	2010	2011	2012	2013	2014	2015	2016	2017	2018	2019	2020	2021	2022	2023
Total	546	715	445	354	583	452	285	513	386	330	190	152	108	367	653	0	108	172	136	85
ANNUAL TOTAL	8,824	8,406	6,973	5,643	4,639	5,380	5,458	6,227	5,387	5,249	4,237	3,811	2,930	2,354	4,290	2,304	1,735	2,086	2,372	1,509

Overtime Citations

		2004	2005	2006	2007	2008	2009	2010	2011	2012	2013	2014	2015	2016	2017	2018	2019	2020	2021	2022	2023
JANUARY	PCF	20	18	45	2	0	0	32	0	49	6	56	0	51	0	31	43	0	102	64	25
	Other	12	8	18	3	0	0	5	0	6	0	5	0	2	0	4	1	0	1	0	0
	Mechanical	0	1	1	0	0	0	0	0	0	0	12	0	3	0	8	16	0	13	7	10
	Total	32	27	64	5	0	0	37	0	55	6	73	0	56	0	43	60	0	116	71	35
FEBRUARY	PCF	41	22	30	63	40	0	24	0	43	52	55	74	62	0	2	4	60	151	38	52
	Other	29	8	5	17	2	1	5	0	7	2	1	2	10	0	0	1	0	0	1	0
	Mechanical	0	5	0	13	1	0	0	0	1	5	2	3	2	0	0	0	7	7	4	12
	Total	70	35	35	93	43	1	29	0	51	59	58	79	74	0	2	5	67	158	43	64
MARCH	PCF	27	25	67	64	33	0	16	14	46	57	50	51	44	0	42	38	48	78	68	54
	Other	6	8	15	9	7	0	3	0	4	4	4	2	5	0	3	0	0	0	0	0
	Mechanical	1	3	0	4	5	0	1	0	5	11	11	2	3	0	13	0	1	7	6	8
	Total	34	36	82	77	45	0	20	14	55	72	65	54	52	0	58	38	49	85	74	62
APRIL	PCF	28	28	47	32	31	39	38	56	40	112	61	75	70	17	30	64	72	111	72	55
	Other	14	7	33	8	8	7	3	6	7	1	4	2	2	1	7	0	0	3	0	0
	Mechanical	1	9	2	1	7	2	0	0	0	2	10	6	2	2	12	1	0	4	4	11
	Total	43	44	82	41	46	48	41	62	47	115	75	83	74	20	49	65	72	118	76	66
MAY	PCF	44	28	13	48	35	31	24	64	84	112	50	32	34	43	36	62	138	0	66	75
	Other	20	9	7	8	10	3	12	4	9	8	1	3	0	1	2	0	0	0	0	0
	Mechanical	0	4	0	3	4	1	2	0	5	16	2	3	2	4	8	1	3	0	9	8
	Total	64	41	20	59	49	35	38	68	98	136	53	38	36	48	46	63	141	0	75	83
JUNE	PCF	13	78	71	42	38	25	31	36	47	85	51	0	26	24	122	46	27	0	0	70
	Other	19	20	33	13	3	2	6	8	5	6	5	0	2	3	10	0	0	0	0	0
	Mechanical	1	9	0	2	6	0	2	0	1	14	7	0	4	2	35	0	0	0	0	14
	Total	33	107	104	57	47	27	39	44	53	105	63	0	32	29	167	46	27	0	0	84
JULY	PCF	18	43	46	43	7	26	27	49	0	64	38	75	62	0	0	38	145	0	0	61
	Other	13	17	32	16	1	1	2	8	0	4	4	5	3	0	0	0	0	0	0	0
	Mechanical	0	13	2	6	2	0	1	0	0	24	10	2	14	0	0	3	2	0	0	15
	Total	31	73	80	65	10	27	30	57	0	92	52	82	79	0	0	0	0	0	0	76
AUGUST	PCF	27	62	22	25	18	4	15	51	7	107	61	30	26	24	0	32	37	0	79	52
	Other	9	21	13	10	2	0	3	5	4	4	8	1	1	7	0	0	0	0	0	0
	Mechanical	0	10	1	5	3	0	0	2	0	6	7	0	1	2	0	1	1	0	15	12
	Total	36	93	36	40	23	4	18	58	11	117	76	31	28	33	0	33	38	0	94	64
SEPTEMBER	PCF	22	35	47	31	22	5	14	46	74	83	47	55	14	0	31	77	98	33	71	43
	Other	11	5	16	8	2	3	1	5	14	0	4	3	3	0	3	0	0	0	0	0
	Mechanical	0	2	0	0	1	0	0	1	5	1	6	0	0	0	10	10	2	1	6	4
	Total	33	42	63	39	25	8	15	52	93	84	57	58	17	0	44	87	100	34	77	47
OCTOBER	PCF	13	16	20	4	30	19	0	44	87	63	30	58	13	0	0	0	163	31	84	63
	Other	19	3	10	0	2	3	0	11	10	4	4	3	2	0	0	0	0	1	0	0
	Mechanical	1	0	0	0	3	0	0	2	2	2	2	3	2	0	0	0	5	3	14	2
	Total	33	19	30	4	35	22	0	57	99	69	36	64	17	0	0	0	168	35	98	65
NOVEMBER	PCF	34	29	6	11	134	11	0	49	63	61	59	0	14	30	15	0	47	41	56	35
	Other	27	9	6	4	7	3	0	4	3	7	5	0	6	7	2	0	0	0	1	0
	Mechanical	2	6	0	0	15	1	0	5	0	7	5	0	5	4	11	0	1	4	8	1
	Total	63	44	12	15	156	15	0	58	66	75	69	0	20	41	28	0	48	45	65	36

Overtime Citations

	2004	2005	2006	2007	2008	2009	2010	2011	2012	2013	2014	2015	2016	2017	2018	2019	2020	2021	2022	2023
DECEMBER PCF	58	78	34	13	119	11	0	43	37	0	25	0	9	47	29	0	181	51	43	40
Other	39	16	13	7	4	1	0	1	9	0	1	0	0	9	3	0	0	0	0	0
Mechanical	2	4	1	0	11	0	0	4	0	0	0	0	2	1	8	0	11	13	5	5
Total	99	98	48	20	134	12	0	48	46	0	26	0	11	57	40	0	192	64	48	45
ANNUAL TOTAL	571	659	656	515	613	199	267	518	674	930	703	489	496	228	477	397	902	655	721	727

San Jose Area CHP SR-17 Citation Summary

Regular Citations

		2004	2005	2006	2007	2008	2009	2010	2011	2012	2013	2014	2015	2016	2017	2018	2019	2020	2021	2022	2023
JANUARY	PCF	173	178	258	174	172	102	126	96	150	279	158	69	58	109	n/a	n/a	22	29	48	64
	Other	49	67	36	45	37	26	20	32	40	25	14	21	12	55	n/a	n/a	16	15	148	28
	Mechanical	9	7	15	6	8	5	2	3	13	13	42	34	10	41	n/a	n/a	17	1	2	13
	Total	231	252	309	225	217	133	148	131	203	317	214	124	80	205	0	0	55	45	198	105
FEBRUARY	PCF	182	224	258	131	95	78	109	94	211	284	59	138	80	84	n/a	n/a	29	80	19	70
	Other	30	89	38	31	26	34	23	7	14	7	13	12	6	9	n/a	n/a	10	123	132	42
	Mechanical	23	1	6	7	6	1	4	2	26	48	20	33	32	12	n/a	n/a	18	1	2	6
	Total	235	314	302	169	127	113	136	103	251	339	92	183	118	105	0	0	57	204	153	118
MARCH	PCF	399	274	197	302	158	115	114	101	154	276	220	137	103	218	97	n/a	18	133	66	80
	Other	167	71	75	20	29	32	6	15	19	13	32	11	10	59	8	n/a	12	196	57	53
	Mechanical	4	2	18	1	12	6	1	10	38	42	30	19	26	38	13	n/a	11	1	27	11
	Total	570	347	290	323	199	153	121	126	211	331	282	167	139	315	118	0	41	330	150	144
APRIL	PCF	259	303	216	108	154	121	110	199	114	223	240	114	122	376	141	n/a	5	60	49	112
	Other	84	104	69	15	31	40	28	9	20	11	30	14	16	39	21	n/a	2	95	37	120
	Mechanical	7	2	4	4	1	4	2	42	49	43	26	25	20	42	27	n/a	0	1	14	24
	Total	350	409	289	127	186	165	140	250	183	277	296	153	158	457	189	0	7	156	100	256
MAY	PCF	289	206	306	325	176	252	242	154	165	324	201	152	91	587	134	n/a	7	55	130	125
	Other	174	77	72	17	36	88	30	36	32	13	16	14	12	60	34	n/a	5	160	33	151
	Mechanical	5	7	2	2	3	13	6	33	32	35	42	28	25	43	24	n/a	6	1	14	34
	Total	468	290	380	344	215	353	278	223	229	372	259	194	128	690	192	0	18	216	177	310
JUNE	PCF	343	304	307	346	90	153	267	91	267	197	233	114	70	483	75	n/a	7	49	68	100
	Other	100	120	62	33	32	29	42	12	40	23	15	8	15	50	12	n/a	1	61	62	88
	Mechanical	7	7	7	1	1	10	6	11	57	58	29	38	30	34	25	n/a	5	0	16	32
	Total	450	431	376	380	123	192	315	114	364	278	277	160	115	567	112	0	13	110	146	220
JULY	PCF	222	161	233	223	201	169	174	87	135	155	73	48	85	102	10	n/a	37	75	92	180
	Other	149	108	63	25	24	32	46	18	14	10	21	6	20	20	12	n/a	14	51	71	89
	Mechanical	11	5	3	2	3	2	6	7	16	25	34	25	32	32	24	n/a	32	0	23	27
	Total	382	274	299	250	228	203	226	112	165	190	128	79	137	154	46	0	83	126	186	296
AUGUST	PCF	187	388	180	178	249	248	124	76	178	154	200	57	145	n/a	n/a	n/a	33	39	86	157
	Other	113	125	45	12	35	36	32	21	9	10	21	9	23	n/a	n/a	n/a	15	64	41	59
	Mechanical	6	6	3	1	6	2	8	18	21	18	31	26	41	n/a	n/a	n/a	17	0	10	11
	Total	306	519	228	191	290	286	164	115	208	182	252	92	209	0	0	0	65	103	137	227
SEPTEMBER	PCF	258	292	252	188	80	300	125	37	194	193	146	115	226	n/a	n/a	n/a	41	45	34	109
	Other	113	86	52	19	28	58	42	13	14	11	13	5	34	n/a	n/a	n/a	18	62	44	48
	Mechanical	3	1	8	0	2	12	7	21	35	18	30	20	33	n/a	n/a	n/a	29	2	13	4
	Total	374	379	312	207	110	370	174	71	243	222	189	140	293	0	0	0	88	109	91	161
OCTOBER	PCF	220	214	230	232	105	223	115	101	175	98	167	70	159	n/a	n/a	n/a	77	46	82	35
	Other	59	30	98	21	26	45	27	17	17	24	23	8	28	n/a	n/a	n/a	24	76	68	73
	Mechanical	5	2	3	3	2	10	7	11	55	18	28	10	39	n/a	n/a	n/a	34	1	17	7
	Total	284	246	331	256	133	278	149	129	247	140	218	88	226	0	0	0	135	123	167	115
NOVEMBER	PCF	170	282	322	372	63	371	79	56	277	116	116	93	320	n/a	n/a	n/a	31	17	26	54
	Other	101	28	81	31	40	69	17	2	16	20	17	10	34	n/a	n/a	n/a	12	55	24	46
	Mechanical	9	6	14	1	2	13	1	5	34	26	20	25	38	n/a	n/a	n/a	23	1	13	12
	Total	280	316	417	404	105	453	97	63	327	162	153	128	392	0	0	0	66	73	63	112
DECEMBER	PCF	107	169	116	292	626	150	121	90	198	117	97	86	148	n/a	n/a	n/a	22	7	68	45
	Other	47	37	36	38	62	13	49	10	5	6	8	5	30	n/a	n/a	n/a	8	62	23	47
	Mechanical	3	3	2	16	23	4	4	12	61	20	11	10	35	n/a	n/a	n/a	18	3	7	3
	Total	157	209	154	346	711	167	174	112	264	143	116	101	213	0	0	0	48	72	98	95
ANNUAL TOTAL		4,087	3,986	3,687	3,222	2,644	2,866	2,122	1,549	2,895	2,953	2,476	1,609	2,208	2,493	657	-	676	1,667	1,666	2,159

Overtime Citations

		2004	2005	2006	2007	2008	2009	2010	2011	2012	2013	2014	2015	2016	2017	2018	2019	2020	2021	2022	2023
JANUARY	PCF	129	0	0	0	129	0	0	0	33	1	0	46	20	20	39	2	0	1	2	0
	Other	27	0	0	0	29	0	0	0	7	49	0	1	2	2	3	34	0	37	90	19
	Mechanical	0	0	0	0	11	0	0	0	21	19	0	8	11	5	14	5	0	9	4	2
	Total	156	0	0	0	169	0	0	0	0	61	69	0	55	33	27	56	41	0	47	96
FEBRUARY	PCF	51	0	0	0	0	0	0	0	43	75	0	62	55	0	37	10	3	0	2	0
	Other	11	0	0	0	0	0	0	0	16	3	0	1	1	0	7	79	26	16	105	0
	Mechanical	1	0	0	0	0	0	0	0	20	17	0	19	20	0	23	3	41	4	5	0
	Total	63	0	0	0	0	0	0	0	79	95	0	82	76	0	67	92	70	20	112	0
MARCH	PCF	33	5	0	75	80	0	0	85	38	58	159	60	70	0	0	0	0	0	0	0
	Other	3	6	0	3	3	0	0	20	7	1	4	1	2	0	36	132	2	22	2	26
	Mechanical	4	1	0	5	14	0	0	14	13	13	21	5	28	0	6	88	1	1	0	0
	Total	40	12	0	83	97	0	0	119	58	72	184	66	100	0	42	220	3	23	2	26
APRIL	PCF	98	46	0	0	0	0	0	185	59	82	102	62	94	88	4	0	0	0	0	0
	Other	26	14	0	0	0	0	0	31	7	11	14	4	3	18	33	133	0	82	0	23
	Mechanical	0	0	0	0	0	0	0	11	25	30	14	9	13	10	12	47	0	4	0	0
	Total	124	60	0	0	0	0	0	227	91	123	130	75	110	116	49	180	0	86	0	23
MAY	PCF	69	41	0	185	0	0	0	119	89	93	74	71	40	131	0	5	0	0	0	0
	Other	1	16	0	15	0	0	0	1	17	13	6	5	1	8	23	68	26	121	0	25
	Mechanical	1	1	0	14	0	0	0	21	14	21	16	18	8	13	6	10	0	3	0	0
	Total	71	58	0	214	0	0	0	141	120	127	96	94	49	152	29	83	26	124	0	25
JUNE	PCF	0	47	91	192	0	0	50	33	177	78	691	107	32	38	0	0	0	0	1	0
	Other	0	3	6	5	0	0	0	0	19	6	78	6	2	6	18	9	0	0	28	0
	Mechanical	0	1	5	3	0	0	0	5	47	33	145	30	15	10	10	1	0	0	1	0
	Total	0	51	102	200	0	0	50	38	243	117	914	143	49	54	28	10	0	0	30	0
JULY	PCF	36	78	0	70	129	153	0	39	0	0	0	43	0	0	0	0	0	0	0	0
	Other	11	18	0	3	1	2	0	3	0	0	0	2	0	0	0	0	0	0	0	0
	Mechanical	2	0	0	7	1	5	0	12	0	0	0	7	0	0	0	0	0	0	0	0
	Total	49	96	0	80	131	160	0	54	0	0	0	52	0	0	0	0	0	0	0	0
AUGUST	PCF	26	90	0	116	204	0	0	42	0	0	74	30	56	48	0	0	0	0	5	0
	Other	0	12	0	6	1	0	0	4	0	0	4	1	3	7	0	0	0	0	44	0
	Mechanical	2	0	0	8	8	0	0	8	0	0	13	10	10	12	0	0	0	0	11	0
	Total	28	102	0	130	213	0	0	54	0	0	91	41	69	67	0	0	0	0	60	0
SEPTEMBER	PCF	69	176	12	40	0	285	0	68	49	0	47	82	56	82	0	0	2	1	0	0
	Other	27	36	0	5	0	8	0	12	4	0	10	0	6	9	0	0	5	32	6	0
	Mechanical	1	1	1	15	0	69	0	19	36	0	13	10	5	13	0	0	1	3	1	0
	Total	97	213	13	60	0	362	0	99	89	0	70	92	67	104	0	0	8	36	7	0
OCTOBER	PCF	64	90	246	0	0	52	0	49	45	0	49	61	68	57	0	6	12	0	6	0
	Other	11	31	13	0	0	2	0	2	48	0	2	3	5	4	0	35	29	36	29	0
	Mechanical	0	1	30	0	0	30	0	15	2	0	9	2	4	21	0	42	16	3	1	0
	Total	75	122	289	0	0	84	0	66	95	0	60	66	77	82	0	83	57	39	36	0
NOVEMBER	PCF	85	103	199	352	18	347	0	45	45	0	34	53	46	105	0	2	0	0	0	0
	Other	13	40	11	19	0	9	0	11	5	0	1	0	6	3	0	23	0	15	0	0
	Mechanical	0	11	19	34	0	98	0	16	13	0	11	10	5	27	0	15	0	2	0	0
	Total	98	154	229	405	18	454	0	72	63	0	46	63	57	135	0	40	0	17	0	0
DECEMBER	PCF	46	93	222	330	621	0	0	7	62	0	43	20	58	45	7	4	0	1	2	0
	Other	3	16	5	5	19	0	0	10	6	0	3	2	5	2	61	26	0	30	44	0
	Mechanical	0	1	11	36	66	0	0	27	19	0	4	11	4	14	7	67	0	0	8	0
	Total	49	110	238	371	706	0	0	44	87	0	50	33	67	61	75	97	0	31	54	0
ANNUAL TOTAL		850	978	871	1,543	1,334	1,060	50	914	986	603	1,641	862	754	798	346	846	164	423	397	95

Extra California Highway Patrol Hours Worked on Highway 17

San Jose Area

Month	2007	2008	2009	2010	2011	2012	2013	2014	2015	2016	2017	2018	2019	2020	2021	2022	2023
January	-	84	-	-	-	36	40	-	16	28	20	42	19	-	64	92	63
February	8	20	-	-	-	44	56	-	29	36	28	27	73	70	19	105	-
March	44	44	-	-	152	36	44	88	43	36	-	41	113	112	21	3	22
April	-	-	-	-	232	48	68	84	36	60	115	12	107	-	72	-	19
May	116	-	-	-	180	68	68	56	68	76	129	28	58	73	104	-	15
June	121	-	-	22	48	132	64	380	49	16	45	28	8	8	-	25	-
July	52	56	-	-	28	-	-	-	20	28	22	-	-	-	-	-	-
August	76	104	131	-	32	-	-	42	28	4	20	-	-	-	-	61	-
September	40	8	204	-	52	56	-	96	48	36	77	-	-	11	29	6	45
October	4	-	36	-	32	60	-	36	28	32	16	-	65	70	51	39	-
November	248	8	220	-	40	48	-	32	24	54	74	-	36	-	20	-	-
December	200	382	-	-	32	48	-	24	48	39	95	112	67	-	35	72	-
Total	909	706	591	22	828	576	340	838	437	445	640	289	545	343	414	402	164

Santa Cruz Area

Month	2007	2008	2009	2010	2011	2012	2013	2014	2015	2016	2017	2018	2019	2020	2021	2022	2023
January	6	-	31	32	-	48	9	48	22	106	30	60	79	-	163	54	79
February	90	28	-	24	-	71	36	72	18	6	54	50	60	52	151	31	74
March	71	39	-	28	18	66	61	60	37	-	-	-	62	48	106	60	72
April	42	20	36	28	88	59	118	64	45	61	30	74	83	95	82	82	72
May	43	3	66	43	87	60	104	44	83	112	36	23	75	126	-	79	79
June	46	50	28	44	64	66	76	39	-	54	24	-	73	30	-	-	73
July	56	34	52	33	81	-	87	32	42	67	12	-	54	144	-	-	72
August	36	38	20	51	107	6	109	71	36	60	8	-	54	43	-	93	57
September	29	34	34	26	85	79	97	64	38	24	24	54	102	89	30	74	45
October	26	55	54	-	57	70	42	45	30	34	-	-	-	194	36	84	54
November	50	198	28	-	60	76	75	70	48	58	6	46	-	91	36	70	24
December	72	239	51	-	54	81	-	56	-	54	42	64	-	180	54	84	60
Total	565	737	399	308	700	681	812	665	399	635	266	371	641	1,091	657	710	759

Combined	1,474	1,443	989	330	1,528	1,257	1,152	1,503	836	1,080	906	660	1,186	1,434	1,071	1,113	923
-----------------	--------------	--------------	------------	------------	--------------	--------------	--------------	--------------	------------	--------------	------------	------------	--------------	--------------	--------------	--------------	------------



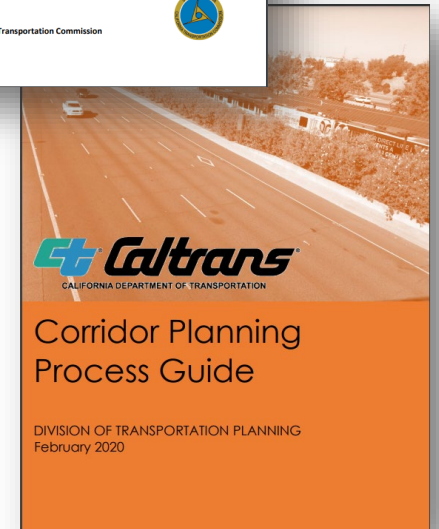
SAFE ON 17 TASK FORCE MEETING

Update on State Route 17 Resiliency and Adaptation Plan

Matt Welker, Caltrans District 5

What is a Caltrans Comprehensive Multimodal Corridor Plan (CMCP)?

- Caltrans Commitment to Corridor Plans
- Replacement of Transportation Concept Reports (TCR)
- The purpose of the Caltrans Corridor Planning Process Guide and the role it plays in Comprehensive Multimodal Corridor Planning.



What is the Caltrans State Route 17 Resiliency and Adaptation Plan?

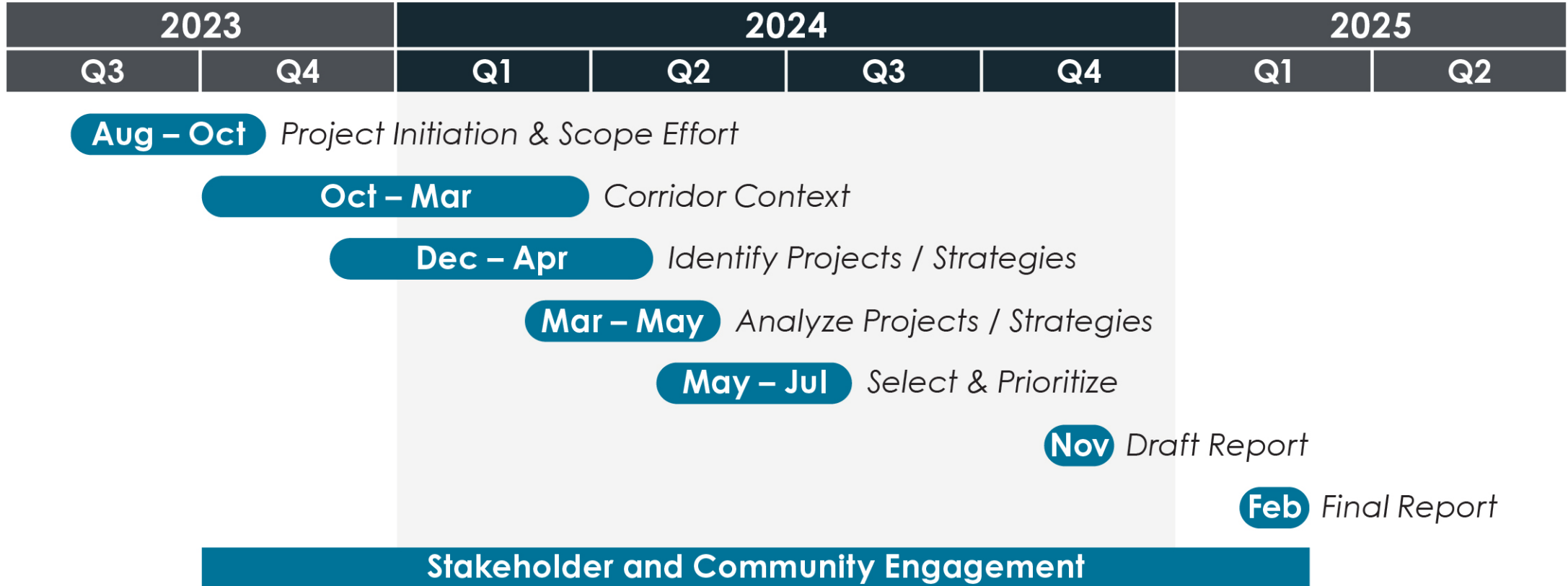
- **Advances goals** of the California Transportation Plan 2050 and Climate Action Plan for Transportation Infrastructure
- Collaborates with the public to **establish a collective vision**
- **Prioritizes project** opportunities that align with assessing physical climate risk and safety improvements that reduce fatalities and severe injuries
- Functions as a CMCP, with **goals and objectives** in alignment with the California Transportation Commission's (CTC) CMCP guidelines

Objectives of the Plan

- Establish resiliency-based corridor **vision, goals, objectives**, associated **performance measures**
- Define and document corridor **resilience challenges** and **emergency evacuation/access needs**
- Propose, evaluate, and prioritize **adaptation strategies** that help **advance corridor goals**



SR 17 Plan Timeline



Virtual Community Meeting



Join Us!

Wednesday, April 3, 2024

6–7:30 p.m.

Virtual Via Zoom

- Learn more about the Plan development
- Provide input on proposed corridor goals, objectives and performance measures
- Ask questions

Stay Engaged



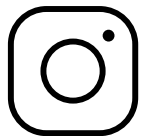
EMAIL

StateRoute17RA@dot.ca.gov



WEBSITE

dot.ca.gov/dist05



INSTAGRAM

@caltrans_d5



FACEBOOK

@caltransdistrict5



PROJECT UPDATE REPORT – SANTA CRUZ COUNTY

Prepared for the Santa Cruz County Regional Transportation Commission's Board Meeting on:
March 07, 2024

The projects below are listed in order of State Route, then by beginning post mile, with all projects covering multiple State Routes listed first. There are three tables of projects displayed: 1. "Projects in Construction" (Milestone range: Construction Contract Approval to Construction Contract Acceptance); 2. "Projects in Development" (project phases "Project Initiation Document" (PID), "Project Approval & Environmental Documents" (PA&ED), "Plans, Specifications, & Estimates" (PS&E), and "Right of Way" (RW)); 3. Highway Maintenance (HM) Program Pavement Projects. The Right of Way phase often overlaps with the Plans, Specifications, & Estimates phase. Please see a list of Caltrans resources available to the public at the end of this document. Oversight Projects are included below when Caltrans is the Lead Agency for a given phase. Generally, updates since the last publication of the project update list are in **bold** type.

Projects in CONSTRUCTION

	Project Name / EA ID	State Route / Post Mile (PM)	Description	Construction Timeline	Construction Capital Cost, Total Project Cost, Fund Source	Project Manager	Contractor	Comments & Updates to Commissioners
C1	Santa Cruz & San Benito Rumble Strip & Striping Safety Project 1M330	State Route: Various: 1, 9, 17, 129 PM: Various	Install centerline and edge line rumble strips; Restripe some locations with enhanced wet night thermoplastic striping material	June 2022 - July 2024	C Cap: \$3.3 million Total: \$4.8 million 010 Safety Funds	Terry Thompson	Central Striping Service, Inc.	Project is in construction.
C2	Auxiliary Lanes & BOS from State Park Dr to Bay/Porter 0C733	State Route: 1 PM: 10.4 – 13.3	Construct auxiliary lanes between State Park Dr & Bay/Porter interchanges. Construct Bus-on-shoulder elements. Reconstruct the Capitola Ave overcrossing.	July 2023 – September 2028	C Cap: \$82.3 million Total: \$94.1 million SCCRTC Project-Caltrans Lead for Construction	Madilyn Jacobsen	Granite Construction Company	Regular project updates are being published as News Releases through Caltrans' Public Information Office and SCCRTC's constant contact list. Both publications use identical information.



PROJECT UPDATE REPORT – SANTA CRUZ COUNTY

Prepared for the Santa Cruz County Regional Transportation Commission's Board Meeting on:
March 07, 2024

Projects in CONSTRUCTION

Project Name / EA ID	State Route / Post Mile (PM)	Description	Construction Timeline	Construction Capital Cost, Total Project Cost, Fund Source	Project Manager	Contractor	Comments & Updates to Commissioners
C8 SR-17 High Friction Surface Treatment (HFST) 1M730	State Route: 17 PM: 3.2 to 11.27 At various locations from 0.2 miles south of Scotts Valley overcrossing to 1.6 miles south of the Summit Rd separation	Safety Construction includes HFST between the left/right edges of the travel way and cold plane removal of Open Grade Asphalt Concrete (OGAC) and replacement with Hot Mix Asphalt	September 2023 – October 2024	C Cap: \$6.9 million Total: \$8.6 million 010 Safety Fund	Chad Stoehr	Graniterock Construction	The construction contract with Graniterock Construction was approved on 9/07/2023. Please watch for construction updates published through Caltrans social media outlets and official News Releases.
C9 Jarvis Slide Rock Fence 1K070	State Route: 17 PM: 8.2 Near Scotts Valley, 0.5 miles south of Sugarloaf Rd	Construct rock fence/barrier at Jarvis Slide to stabilize the slope	December 2022 – February 2024	C Cap: \$4.3 million Total: \$7.4 million SHOPP- Major Damage	Chad Stoehr	Gordon N. Ball, INC	Completion anticipated end of February 2024.



PROJECT UPDATE REPORT – SANTA CRUZ COUNTY

Prepared for the Santa Cruz County Regional Transportation Commission's Board Meeting on:
March 07, 2024

Projects in CONSTRUCTION

Project Name / EA ID	State Route / Post Mile (PM)	Description	Construction Timeline	Construction Capital Cost, Total Project Cost, Fund Source	Project Manager	Contractor	Comments & Updates to Commissioners
C10 Wildlife Habitat Crossing 1G260	State Route: 17 PM: 9.4 to 9.6 From 0.6 miles south of Laurel Rd to 0.25 miles north of Laurel Rd	Construct wildlife undercrossing	September 2021 - January 2024	C Cap: \$6.2 million Total: \$12 million SHOPP- for project development Local Contributions- for project construction	Chad Stoehr	Graniterock Construction	Construction has been completed. This project is now in Close Out.
C11 Holohan Rd Intersection Improvement 0T770	State Route: 152 PM: 1.85 to 2.15	Intersection improvements including: intersection widening to incorporate sidewalks, curbs, gutters, bike lanes and enhanced lane configuration; traffic signal replacement; 4 new crosswalks; modified drainage.	August 2023 – June 2024	County of Santa Cruz encroachment permit project Caltrans contribution through Minor A funds	Madilyn Jacobsen	Precision Grade, Inc.	Project construction is expected to begin in early May 2024 .



PROJECT UPDATE REPORT – SANTA CRUZ COUNTY

Prepared for the Santa Cruz County Regional Transportation Commission's Board Meeting on:
March 07, 2024

Projects in DEVELOPMENT

	Project Name / EA ID	State Route / Post Mile (PM)	Description	Construction Target (Contract Approval to Contract Acceptance)	Construction Capital Cost, Total Project Cost, Fund Source	Project Manager	Phase (PID, PA&ED, PS&E, RW, Construction)	Comments & Updates to Commissioners
D1	Broadband Middle-Mile Network 1Q020	State Route: 1 & 17 PM: From SR-1 at Mission St to SR-17 at the Santa Clara County Line	Install broadband middle-mile fiber lines into the shoulder and/or outside lane when the shoulder is unable to fully accommodate the work. Construct a fiber hub location.	Summer 2024 – Fall 2025	California Department of Technology project & funds Caltrans assistance with implementation	Genaro Diaz	PS&E/RW	Much of this project is still fluid as it is based on directive and funds from the Office of the Governor. This project is planned to install conduit & fiber lines in the roadway shoulder or outer lanes along Highway 17. Once Construction begins, please keep aware of any Caltrans News Releases describing related lane closures during the installation process.
D2	Pajaro Flood Management Bridges 1Q980	State Routes: 129 & 152 PMs: 1.841 & 2.028	Raise levees along the Pajaro River and Salsipuedes Creek and raise & replace the SR-152 (36-0001) and SR-129 (36-0034) bridges over Salsipuedes Creek.	Winter 2027-28 – Winter 2029-30	Federal Funds Oversight Project: Pajaro Regional Flood Management Agency	Madilyn Jacobsen	PID	The local agency is developing a Draft Project Initiation Document (PID) with a final document anticipated to be complete in Fall/Winter 2024.



PROJECT UPDATE REPORT – SANTA CRUZ COUNTY

Prepared for the Santa Cruz County Regional Transportation Commission's Board Meeting on:
March 07, 2024

Projects in DEVELOPMENT

	Project Name / EA ID	State Route / Post Mile (PM)	Description	Construction Target (Contract Approval to Contract Acceptance)	Construction Capital Cost, Total Project Cost, Fund Source	Project Manager	Phase (PID, PA&ED, PS&E, RW, Construction)	Comments & Updates to Commissioners
D15	SR-9 North CAPM 1K900	State Route: 9 PM: 18.89 to 27.09 From 0.4 miles south of Saratoga Toll Rd to the Santa Cruz/San Mateo County Line	Pavement preservation strategies including but not limited to dig-outs, profile grinding, overlay, placing shoulder backing and dike. Reconstruct guardrail, rehabilitate or replace 6 culvert and replace 67 sign panels	Summer 2026 – Summer 2028	C Cap: \$7.5 million Total: \$12.8 million SHOPP-Pavement	Doug Hessing	PA&ED	PA&ED phase continues. Survey and environmental studies are ongoing.
D16	SR-17 Drainage Improvements 1K670	State Route: 17 PM: 0 to 12.5 At various locations within the project limits	Stormwater mitigation by replacing and restoring culverts and drainage systems	Summer 2027 – Summer 2028	C Cap: \$4.6 million Total: \$9.5 million SHOPP-Sustainability / Climate Change	Madilyn Jacobsen	PA&ED	Circulation of the Draft Environmental Document ended on November 13, 2023. The environmental phase was completed in January 2024. The design phase (PS&E) will begin in March 2024.



PROJECT UPDATE REPORT – SANTA CRUZ COUNTY

Prepared for the Santa Cruz County Regional Transportation Commission's Board Meeting on:
March 07, 2024

Projects in DEVELOPMENT

	Project Name / EA ID	State Route / Post Mile (PM)	Description	Construction Target (Contract Approval to Contract Acceptance)	Construction Capital Cost, Total Project Cost, Fund Source	Project Manager	Phase (PID, PA&ED, PS&E, RW, Construction)	Comments & Updates to Commissioners
D17	SR-17 Pavement Maintenance Treatment 1R450	State Route: 17 PM: 0.15 to 0.55	Install Non-Rubberized Open Grade Friction Coarse pavement for enhanced vehicle to roadway grip	Fall 2026 – Fall 2027	C Cap: \$895,000 Total: \$1.8 million Minor A Program	Chad Stoehr	PA&ED	This project recently kicked off its Project Approval & Environmental Document (PA&ED) phase.
D18	SR-17 Replace Culverts 1R980	State Route: 17 PM: 7.31 & 11.96	Replace 2 drainage systems currently in poor condition.	Fall 2027 – Spring 2028	C Cap: \$1.25 million Minor A Program	Aaron Wolfram	PA&ED	The Project is on schedule for approved Project Report and Environmental Document in March 2026.
D19	Replace Damaged Bridge Girder 1P280	State Route: 17 PM: 17.02 SR-17 northbound at the interchange bridge of SR-1 over SR-17.	Replace damaged bridge girder	Spring 2024 – Summer 2024	C Cap: \$1.25 million Total: \$3.8 million Minor A Program-Bridge Health	Chad Stoehr	PS&E/RW	Construction work may affect one or more lanes of traffic on both Hwy. 17 and on Hwy 1. This project has achieved the milestone "Ready to List" on September 22, 2023 and is anticipated to have a construction contract approved by March 2024.



PROJECT UPDATE REPORT – SANTA CRUZ COUNTY

Prepared for the Santa Cruz County Regional Transportation Commission's Board Meeting on:
March 07, 2024

ACRONYMS USED IN THIS REPORT:

ADA	Americans with Disabilities Act
CC	Coastal Commission
CCA	Construction Contract Acceptance
CEQA	California Environmental Quality Act
CMAQ	Congestion Mitigation Air Quality
CMIA	Corridor Mobility Improvement Account
CTC	California Transportation Commission
ED	Environmental Document
EIR	Environmental Impact Report
HFST	High Friction Surface Treatment
PM	Postmile
RTL	Ready to List

SB1	Senate Bill 1, the Road Repair and Accountability Act of 2017
SCL	Santa Clara (County)
SCR	Santa Cruz (City or County)
SHOPP	State Highway Operation and Protection Program
SR	State Route
STIP	State Transportation Improvement Program
TMS	Traffic Management System

Project Phases

PID	Project Initiation Document
PA&ED	Project Approval and Environmental Document
PS&E	Plans, Specifications, and Estimates
RW	Right of Way
CON	Construction, as a phase title



PROJECT UPDATE REPORT – SANTA CRUZ COUNTY

Prepared for the Santa Cruz County Regional Transportation Commission's Board Meeting on:
March 07, 2024

-Resources-

Communication:

For General Caltrans' Inquiries, or to be added to the Santa Cruz County News Release Distribution List:

Kevin Drabinski, Public Information Officer
Kevin.Drabinski@dot.ca.gov

For Region Specific Questions:

Paul Guirguis, Regional Planning Liaison – Santa Cruz County
Paul.Guirguis@dot.ca.gov

For Project Specific Questions or Partnering Opportunities:

Please reach out to the Project Manager listed, or to the Regional Planner above.

Requests:

To notify Caltrans of specific concerns regarding current roadway or facility conditions, please submit a customer service request through the following online portal: <https://csr.dot.ca.gov/>

Examples of Customer Service Requests:

Any of the following on the State's highway system:

- Streetlight issues
- Plant over-growth
- Damaged roadway
- Fallen trees on the roadway
- Other maintenance issues

For less specific concerns, please reach out to the Public Information Officer to be directed to the appropriate respondent



PROJECT UPDATE REPORT – SANTA CRUZ COUNTY

Prepared for the Santa Cruz County Regional Transportation Commission's Board Meeting on:
March 07, 2024

Online Resources:

Caltrans CCTV Camera Map: <https://cwwp2.dot.ca.gov/vm/iframeemap.htm>

- Allows the public to see current conditions along the State Highway System

Caltrans Active Transportation Plans & Webmaps: <https://dot.ca.gov/programs/transportation-planning/division-of-transportation-planning/active-transportation-and-complete-streets/caltrans-active-transportation-plans/>

- We are District 5
- Shows existing conditions of bicycle and pedestrian facilities along the State Highway System
- Includes prioritized segments and locations of bicycle and pedestrian needs

The Caltrans District 5 Office of Local Assistance: <https://dot.ca.gov/programs/local-assistance/>

- Includes links to many Federal and State funding opportunities
- Can help guide interested folks through the above-mentioned program requirements

The Official Caltrans District 5 Webpage: <https://dot.ca.gov/caltrans-near-me/district-5>

Mobile App/Caltrans Website: "Caltrans QuickMap"

- Available for free in the Apple App Store and Google Play Store
- Provides realtime conditions for the State Highway System
- Desktop Format: <https://quickmap.dot.ca.gov/>

Caltrans Lane Closures Reporting System: <https://lcswebreports.dot.ca.gov/>

- Provides a 7-day look-ahead for planned lane closures
- Does not include unanticipated emergency closures (see Quickmaps for in-the-moment roadway conditions)



PROJECT UPDATE REPORT – SANTA CRUZ COUNTY

Prepared for the Santa Cruz County Regional Transportation Commission's Board Meeting on:
March 07, 2024

A graphic with a background image of a coastal landscape. At the top, a white speech bubble contains the Caltrans logo and the text "FOLLOW US" in large bold letters, with a horizontal line underneath, and "& let's connect" below it. Below the speech bubble are three teal horizontal bars, each with a social media icon on the left and text on the right: a Facebook icon followed by "Caltrans Central Coast (District 5)", a Twitter icon followed by "@CaltransD5", and an Instagram icon followed by "@caltrans_d5". At the bottom is a teal rectangular box containing contact information for Public Affairs. The background image shows a coastline with mountains, a bay, and a highway with palm trees.

Caltrans
FOLLOW US
& let's connect

f Caltrans Central Coast (District 5)

t @CaltransD5

i @caltrans_d5

Public Affairs Contact

Jim Shivers
PIO Chief
805-748-1170, Jim.Shivers@dot.ca.gov

Alexa Bertola
San Luis Obispo and Santa Barbara Counties
805-549-3237, Alexa.Bertola@dot.ca.gov

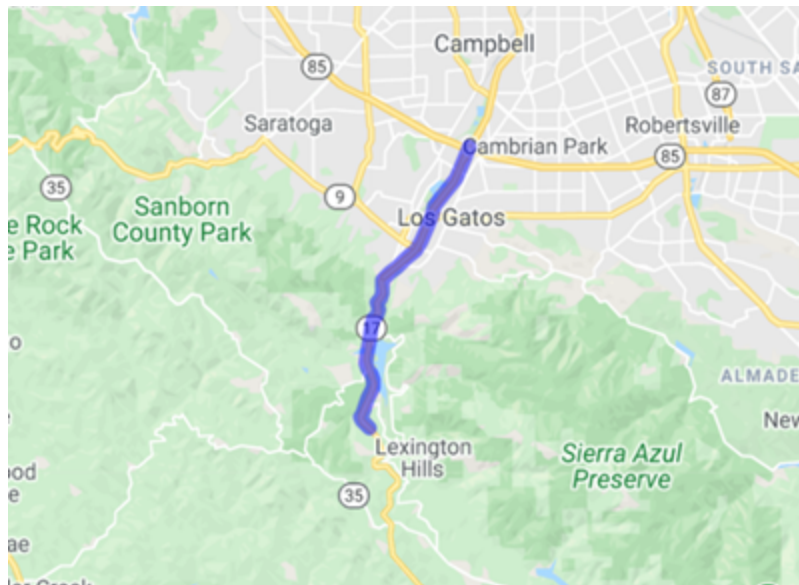
Heidi Crawford
San Benito County
805-835-6500, Heidi.Crawford@dot.ca.gov

Kevin Drabinski
Santa Cruz and Monterey Counties
805-549-3138, Kevin.Drabinski@dot.ca.gov

Made with PosterMyWall.com

Highway 17 Roadway Improvement Project

dot.ca.gov/caltrans-near-me/district-4/d4-projects/d4-santa-clara-17-roadway-improvement



Description:

In and near Los Gatos, Campbell and San Jose, from Hebard Way to Route 280. Pavement rehabilitation.

One Southbound lane and one northbound lane will be closed overnight, Monday through Friday, 9:00 PM to 6:00 AM, until July 2023.

Purpose & Need:

The purpose of this project is to preserve and extend the service life of the existing pavement and improve ride quality.

The need of this project is to grind and pave State Route 17 pavement and improve the roadside facilities with the underground drainage systems.

Project Scope:

The project includes the following work.

1. Guard Rail and crash cushion upgrades
2. New or improved curb ramps at intersections
3. AC (Asphalt Concrete) paving
4. Concrete pavement
5. Drainage system improvements

6. Striping and Rumble strips
7. Shoulder slip out repair at PM 4.35
8. Road signs
9. Electrical loop detector installations
10. Concrete barrier transition at the end of bridge rails

Current Status:

Project is currently in Construction Phase.

Schedule:

- Environmental Documents Fall 2018 (Actual)
- Design Complete Summer 2020 (Actual)
- Begin Construction Summer 2021 (Actual)
- End Construction Winter 2023 (Tentative)



FACT SHEET: Highways

SR 17 Corridor Congestion Relief Project

Overview

The Santa Clara Valley Transportation Authority (VTA), in cooperation with the Town of Los Gatos and the California Department of Transportation (Caltrans), proposes to construct improvements on State Route (SR) 17 and upgrade the SR 17/SR 9 interchange in the Town of Los Gatos.

Objectives

The objectives of the project are to:

- Improve mainline traffic operations and reduce congestion on SR 17;
- Reduce cut-through traffic in the Town of Los Gatos;
- Improve SR 17/SR 9 interchange operations; and
- Improve active transportation (bicycle and pedestrian) mobility and connectivity in the Town of Los Gatos across SR 17.

Project Features

The proposed improvements may include, but are not limited to, the following:

- Modify the SR 17/SR 9 interchange’s on- and off-ramps
- Widen SR 17 mainline and shoulder to eliminate lane-drop and bottlenecks from Lark Avenue to SR 17/SR 9 interchange
- Implement advance transportation technology
- Install traffic signals control system and ramp meters.

Project Schedule

Alternatives Analysis and Preliminary Engineering:	2020 - 2021 (completed)
Environmental Approval:	2021 - 2024
Design Completion*:	2024 - 2025
Project Construction*:	2026 - 2028

* Full funding for these phases of the project has not yet been finalized.



SR17-050222

Capital Cost

The project cost is estimated to be between \$102 million and \$111 million, contingent on the final determination of improvements. The project is to be funded by a combination of VTA 2016 Measure B, local funds and other funds as available.

Funding Partners



How to Reach Us

VTA’s Community Outreach
 (408) 321-7575, (408) 321-2330 TTY
www.vta.org, community.outreach@vta.org

Project Location

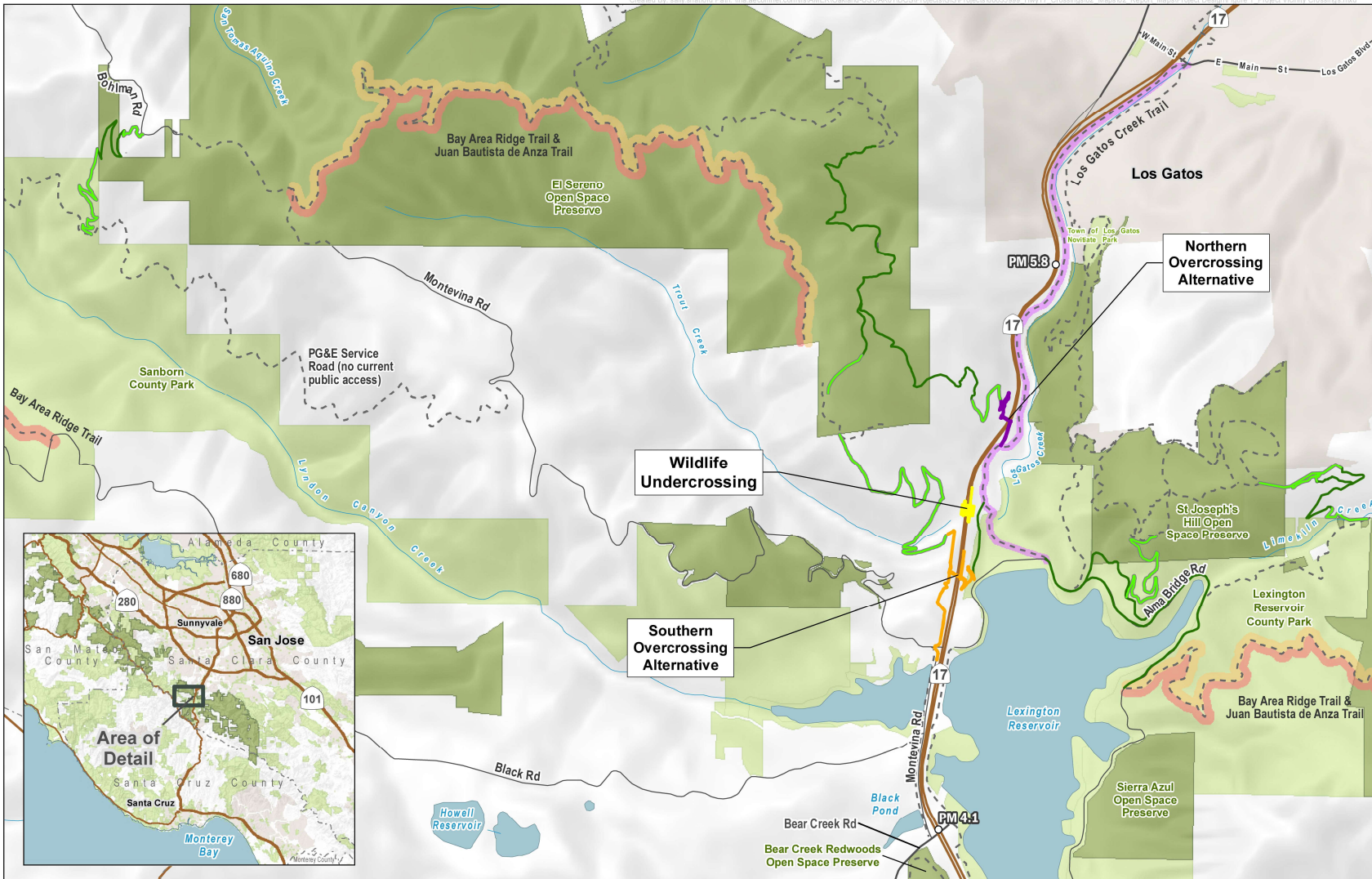


Figure 1.1-1: Project Vicinity

- | | | | |
|------------------------|-------------------------------------|--|--|
| ○ Project Post Mile | Proposed Crossings | Trails | — Bay Area Ridge Trail |
| — River/Stream | — Southern Overcrossing Alternative | — Proposed Trail | — Bay Area Ridge Trail & Juan Bautista de Anza Trail |
| — Midpen Open Space | — Northern Overcrossing Alternative | — Existing Trail - Proposed Improvements | — Los Gatos Creek Trail |
| — Other Protected Land | — Wildlife Undercrossing | --- Existing Road or Trail | |

Note: Not all proposed trails will be built

Midpeninsula Regional
Open Space District
(Midpen)
5/11/2023



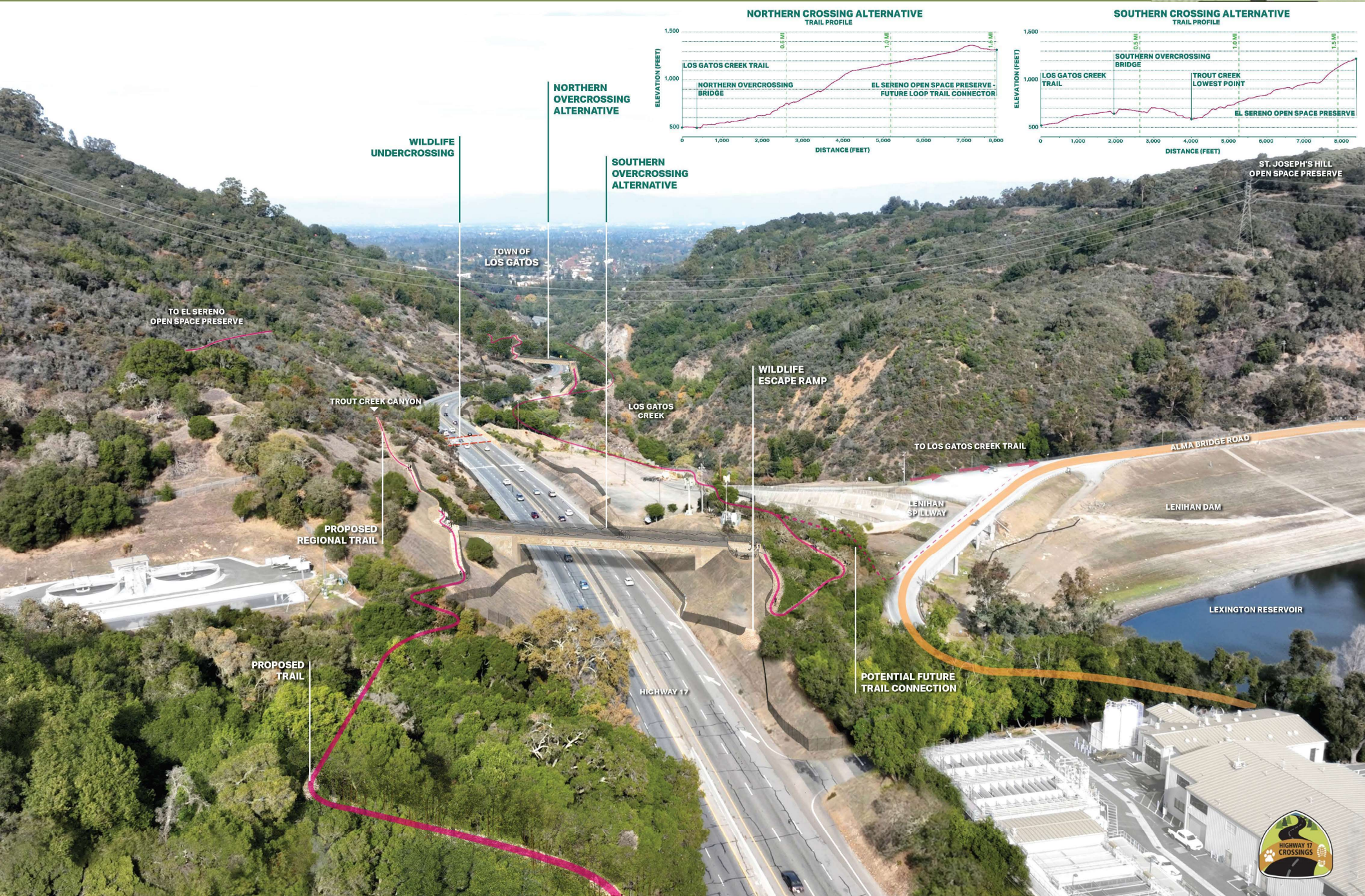
PRESERVE
PROTECT
RESTORE
EDUCATE
ENJOY



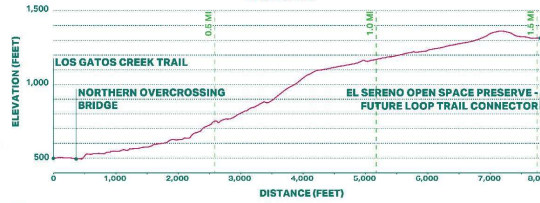
openspace.org

While the District strives to use the best available digital data, these data do not represent a legal survey and are merely a graphic illustration of geographic features.

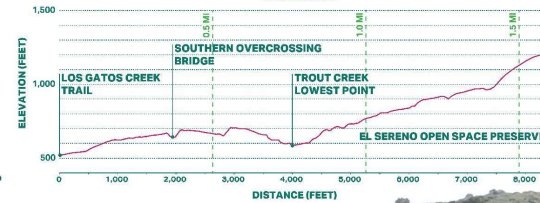
PROJECT COMPONENTS



NORTHERN CROSSING ALTERNATIVE
TRAIL PROFILE



SOUTHERN CROSSING ALTERNATIVE
TRAIL PROFILE



ST. JOSEPH'S HILL
OPEN SPACE PRESERVE



Project Components

- ❁ Wildlife Undercrossing with wildlife directional fencing and escape ramps, electrified mats, and sound walls
- ❁ Regional Trail Overcrossing – one alternative to be selected (Northern OR Southern)
- ❁ New or improved existing trail connections
- ❁ Mitigation Credit Agreement



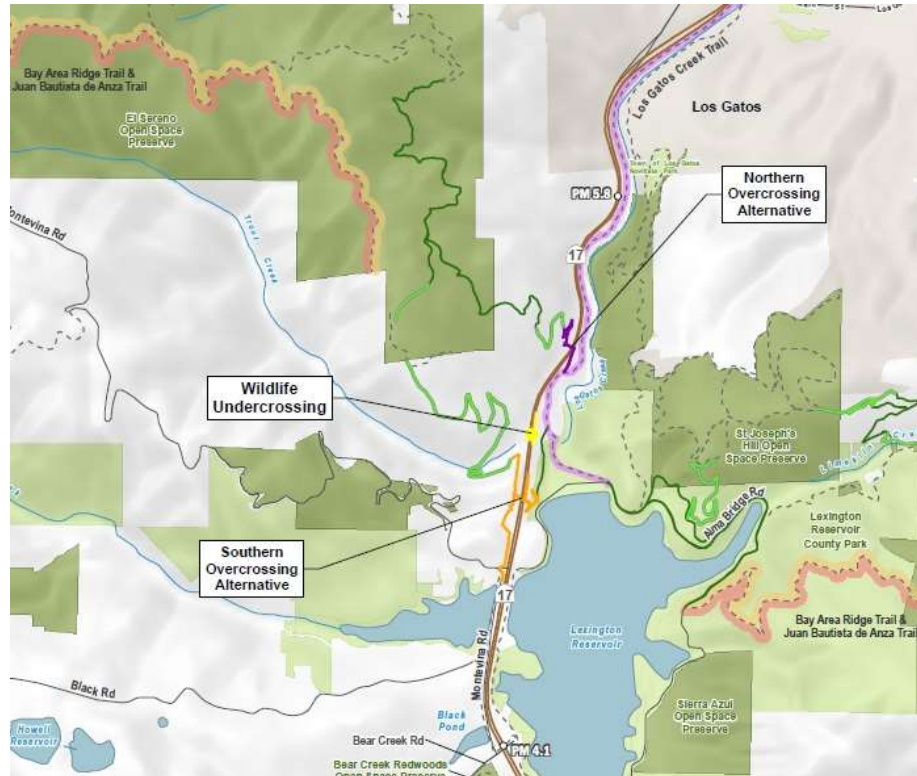
PRESERVE
PROTECT
RESTORE
EDUCATE
ENJOY



Trail Overcrossing Alternatives

Two Alternatives (only ONE will be constructed):

- Southern Alternative
- Northern Alternative



PRESERVE
PROTECT
RESTORE
EDUCATE
ENJOY



openspace.org

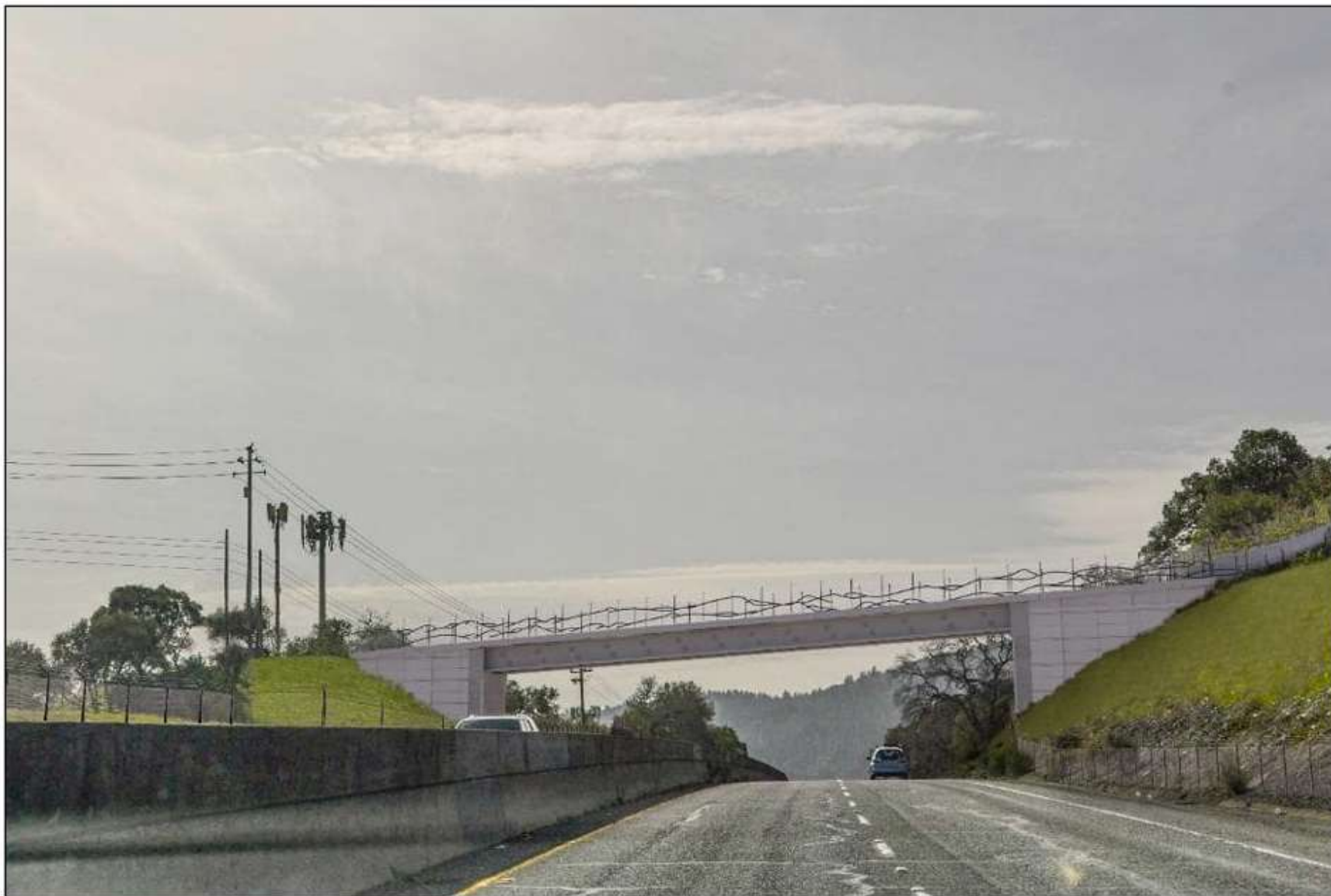
Northern Overcrossing Alternative



- PRESERVE**
- PROTECT**
- RESTORE**
- EDUCATE**
- ENJOY**



Southern Overcrossing Alternative



PRESERVE

PROTECT

RESTORE

EDUCATE

ENJOY



openspace.org