



Highway 9 - San Lorenzo Valley Corridor Transportation Plan

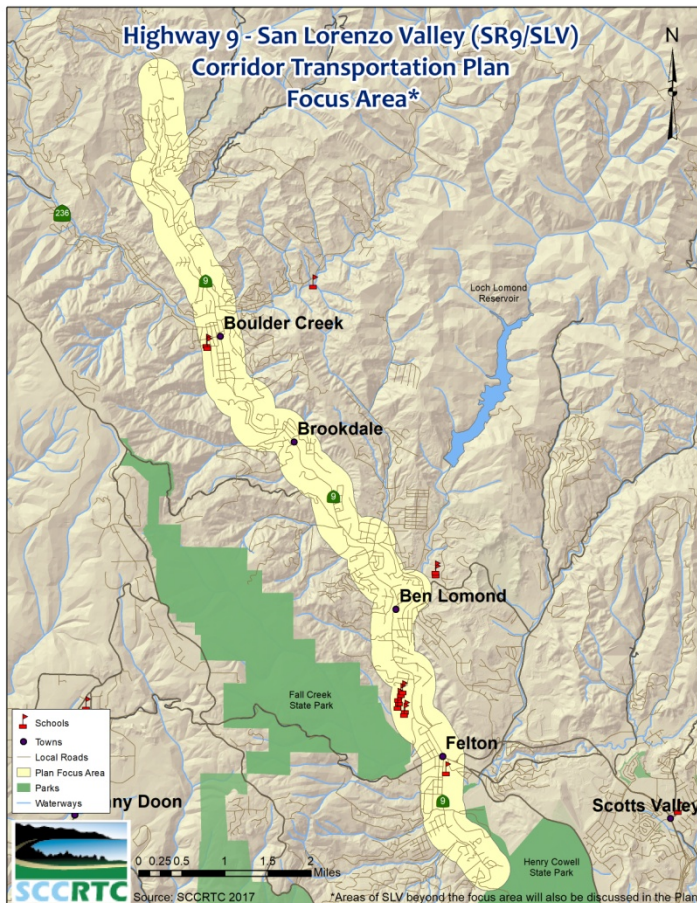
Project Summary

A complete streets plan for a ten mile section of Highway 9 through San Lorenzo Valley (SLV) that identifies, prioritizes, and enables implementation of the most critical and cost effective transportation projects. This mountainous roadway serves as the “Main Street” and economic center for the towns of Felton, Ben Lomond, Brookdale, and Boulder Creek and as an interregional arterial connecting Silicon Valley and Santa Cruz. This plan will focus on safety for pedestrians, bicyclists and motorists; access to schools, businesses, and bus stops; traffic operations, pavement conditions, drainage and other needs in this important travel corridor.



Why is this plan needed?

A comprehensive multimodal transportation needs assessment and evaluation of a range of options to address transportation challenges is needed to identify and prioritize transportation investments for this important corridor, especially since state, federal, and local revenues are severely constrained. This comprehensive plan for Highway 9 through San Lorenzo Valley will:



- build on past public input and planning activities,
- document existing conditions,
- identify infrastructure gaps,
- answer questions about what can be done within Caltrans’ right-of-way,
- provide data, evaluation, analysis, and public deliberation to make informed decisions,
- identify priorities for voter-approved [Measure D](#) funds designated for the corridor.

This effort will help prioritize transportation projects that can be implemented in the short and mid-term to address transportation challenges on the corridor.

This corridor-specific plan will be a stepping stone to securing funding for priority investments and provide a framework for partnering with Caltrans to implement investments that promote complete streets, implement sustainable communities strategies,

and improve multi-modal access, connectivity, safety, security, system preservation, economic vitality and environmental quality. The plan should also advance other local, regional, state and federal transportation planning goals and objectives. The completed plan will include conceptual complete street designs and be used to facilitate subsequent design, environmental review and construction of improvements.

Public Outreach

San Lorenzo Valley residents, businesses, community groups, parents and school administrators regularly express concerns about Highway 9. Meetings held since 2013 have accentuated the need for a comprehensive plan. Building upon past public outreach efforts, the project team will gather input from community members, including organizations who serve low-income individuals and families, monolingual Spanish speakers, seniors, persons with disabilities, and youth throughout development of the plan using a range of collaborative activities, including surveys, Town Hall meetings, and grassroots outreach.

- The community can sign up for the Highway 9 E-news List by emailing info@sccrtc.org, calling 831-460-3200 or signing up on the RTC website: <http://sccrtc.org/about/esubscriptions/>
- Comments can be sent to SCCRTC: info@sccrtc.org or 1523 Pacific Avenue, Santa Cruz, CA 95060.

Major Milestones

- Define Goals, Objectives and Evaluation Criteria: Early on, the public will help establish common goals and objectives for the corridor. Evaluation criteria, based on goals and objectives identified by the community, will be used to analyze and prioritize a range of investment options to address deficiencies and goals for the corridor.
- Corridor Travel Analysis and Needs Assessment: Includes review of existing and projected future conditions, identification of multimodal projects (investment options) that would advance goals and objectives, including improve access, mobility, safety, and operations.
- Evaluation and Prioritization of Investment Options: Includes identification of potential funding sources, metrics to evaluate the degree to which different projects address issues and advance goals for the corridor, and development of a prioritized list of short-term and mid-term projects that are reasonable to implement in consideration of financial realities.
- Corridor Plan: The final plan is expected to reflect community consensus on investment priorities. *The draft plan is expected to be available for public review in the fall of 2017.*

Project Team

The Santa Cruz County Regional Transportation Commission (SCCRTC) is the lead agency for this project, to be implemented in partnership with Caltrans, the County of Santa Cruz, Santa Cruz Metropolitan Transit District (METRO), residents, businesses, schools, and other stakeholders. A consultant team will help prepare the plan.



This planning effort is funded through a \$249,000 Caltrans' Sustainable Communities Transportation Planning Grant (FTA 5304) and local funds.



Santa Cruz County Regional Transportation Commission
1523 Pacific Ave, Santa Cruz, CA 95060
831-460-3200
info@sccrtc.org
www.sccrtc.org/slv