



Freeway Service Patrol

Program Description

The Santa Cruz County Regional Transportation Commission (RTC) operates the Freeway Service Patrol (FSP) program in Santa Cruz County in conjunction with the Department of Transportation (Caltrans) and the California Highway Patrol (CHP). This program consists of two tow trucks patrolling Highway 1 from Highway 9 to State Park Drive and Highway 17 from Mount Herman Road to the Santa Clara County Line.

FSP tow trucks remove disabled vehicles from the highway at no cost to motorists. They reduce congestion on the highway by quickly clearing accidents, debris, and other incidents, and allowing traffic to return to normal conditions. They commonly perform tasks such as changing a flat tire, jump-starting a vehicle, or providing gas. Service is available during weekday commute hours and on a limited schedule on weekends.

The FSP program is designed to reduce congestion, improve safety, and reduce fuel consumption and auto emissions by minimizing the congestion associated with collisions and other incidents. The benefit/cost ratio for the Santa Cruz County FSP program is 4:1.



Program Highlights

- ▶ Reduces the number of traffic jams by quickly clearing accidents, debris, and other incidents
- ▶ Lessens the chain of further accidents and bottlenecks caused by passing drivers
- ▶ Saves fuel and cuts air-pollution emissions by reducing stop-and-go traffic
- ▶ Helps stranded motorists

Service Schedule

	WEEKDAYS		WEEKENDS	
	AM	PM	Saturday	Sunday
Hwy 1	6:00-9:00 a.m.	3:30-6:30 p.m.	No regular weekend service*	
Hwy 17	6:30-9:30 a.m.	3:30-6:30 p.m.	None	1:00-7:00 p.m.

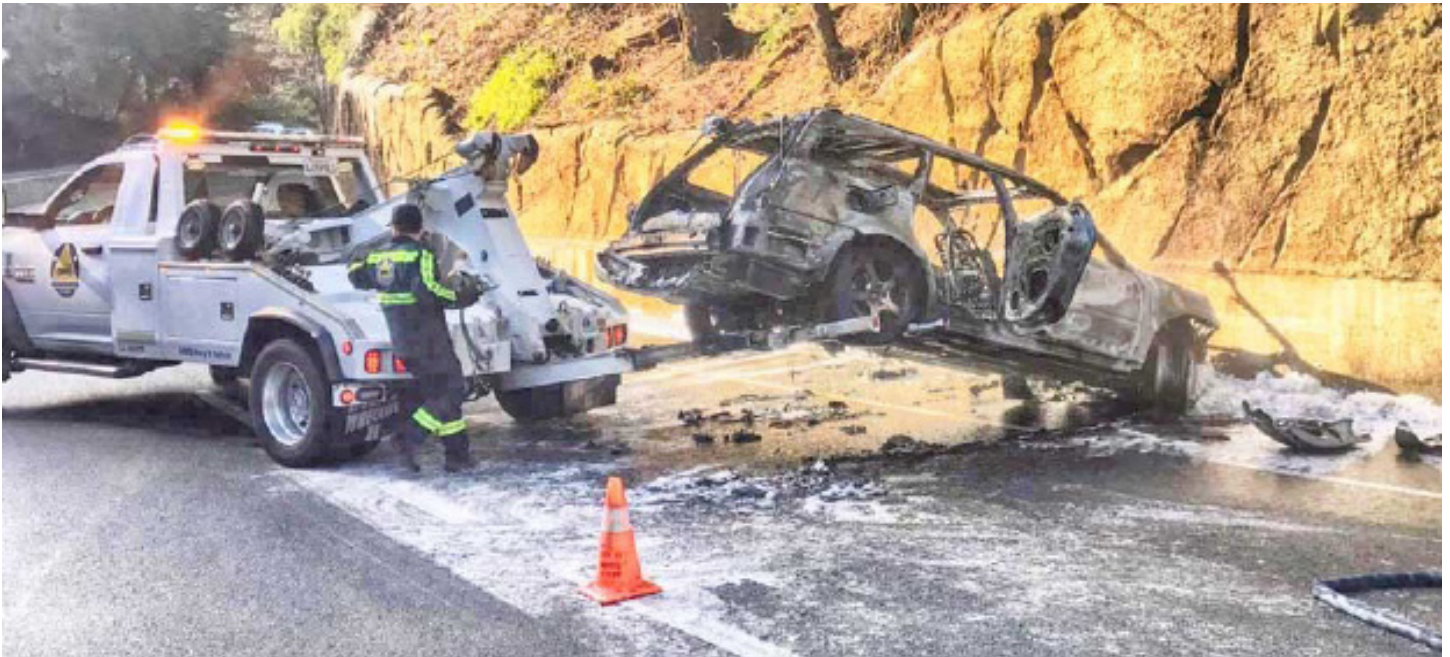
*Special weekend service is provided during Spring Break and Summer.



Freeway Service Patrol

Program Costs and Funding

Estimated Program Cost	\$ 7,112,000
Funding Sources	
Measure D (Highway)	\$ 1,350,000
Other Secured	\$ 5,762,000



FSP Partners

