



Highway 9 - San Lorenzo Valley Complete Streets Corridor Plan

www.sccrtc.org/slvplan

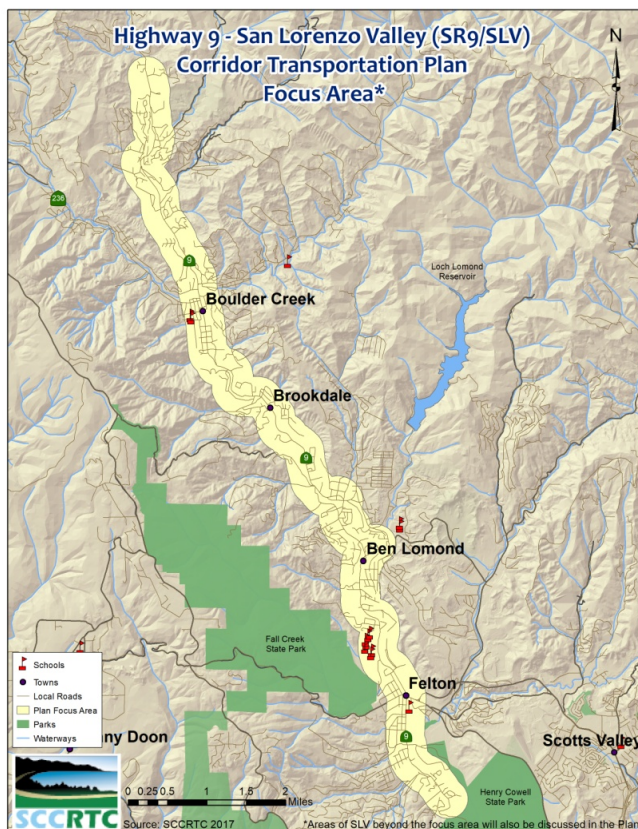
Project Summary

A complete streets corridor plan is being prepared for Highway 9 and connecting county roads through the San Lorenzo Valley (SLV) that identifies, prioritizes, and enables implementation of the most critical and cost effective transportation projects. This mountainous roadway serves as the “Main Street” and economic center for the towns of Felton, Ben Lomond, Brookdale, and Boulder Creek and as an interregional arterial connecting Silicon Valley and Santa Cruz. This plan focuses on safety for pedestrians, bicyclists and motorists; access to schools, businesses, and bus stops; traffic operations, pavement conditions, drainage and other needs in this travel corridor.



Why is this plan needed?

A comprehensive multimodal transportation plan is needed to evaluate and prioritize transportation projects that can be implemented in the short and mid-term to address challenges on the corridor, especially since state, federal, and local revenues are severely constrained.



This comprehensive plan for Highway 9 through San Lorenzo Valley:

- Builds on past public input and planning activities
- Documents existing conditions
- Identifies infrastructure gaps
- Identifies potential modifications to village cores to reduce speeding, increase parking, and create safer pedestrian walking and crossing facilities
- Defines preferred roadway designs that include sidewalks, bike lanes, etc. for a variety of location types to expand safe pedestrian and bicycle access on the entire corridor
- Answers questions about what can be done within Caltrans’ right-of-way
- Provides data, evaluation, and public deliberation to make informed decisions
- Identifies priorities, including for voter-approved [Measure D](#) funds designated for the corridor.



This corridor-specific plan will be a stepping stone to securing funding for priority investments and provide a framework for partnering with Caltrans to implement investments that address community concerns, improve multi-modal safety, access, connectivity, economic vitality and environmental quality, and improve the condition of existing infrastructure (e.g. fill potholes). The plan includes conceptual complete street designs to provide transportation facilities for all users, including pedestrians, bicyclists, and transit users, and will be used to facilitate subsequent design, environmental review and construction of improvements.

Public Outreach

San Lorenzo Valley residents, businesses, community groups, parents and school administrators regularly express concerns about Highway 9. Meetings held since 2013 have accentuated the need for a comprehensive plan. Building upon past public outreach efforts, community meetings were held in October 2016 and May 2017 and an online survey solicited input during summer 2017. Focus groups of stakeholders for each village and the schools campus were held in Spring 2018. The community is encouraged to now provide input on the draft plan, available online at: www.sccrtc.org/slvplan.

Major Milestones

- Corridor Travel Analysis and Needs Assessment: Included review of existing and projected future conditions and identification of potential projects (investment options) that improve access, mobility, safety, and operations.
- Community members provided input on the Draft Phase 1 Report, identified specific challenge areas, and provided input on some of the specific ideas previously prioritized by the community.
- Evaluation and Prioritization of Investment Options. Evaluation criteria were used to analyze the degree to which different projects/investments would address challenges and advance goals for the corridor. This analysis resulted in an implementation plan that prioritizes short-term and longer-term projects and concepts.
- Corridor Plan: The final plan is expected to reflect community consensus on investment priorities. *The draft plan is available for public review online at www.sccrtc.org/slvplan.*
 - Let us know what you think! Send comments to SCCRTC: slvplan@sccrtc.org or 1523 Pacific Avenue, Santa Cruz, CA 95060 by February 15, 2019 for consideration in the final plan. Or share your input during an open house or other meetings (dates and locations online).

Project Team

The Santa Cruz County Regional Transportation Commission (RTC) is the lead agency for this project, implemented in partnership with Caltrans, the County of Santa Cruz, Santa Cruz Metropolitan Transit District (METRO), residents, businesses, schools, and other stakeholders. The consultant team of Kimley-Horn and TrailPeople assisted in preparation of the plan.



This planning effort is funded through a \$249,000 Caltrans' Sustainable Communities Transportation Planning Grant (FTA 5304) and local funds.



Sign up for the Highway 9 E-news list or submit comments on the corridor by contacting:
Santa Cruz County Regional Transportation Commission (SCCRTC)
1523 Pacific Ave, Santa Cruz, CA 95060
831-460-3200 slvplan@sccrtc.org
www.sccrtc.org/slvplan