



# Active Transportation: Coastal Rail Trail Segments 10 & 11

## Project Description

The Coastal Rail Trail Segments 10 and 11 project (as defined in the Monterey Bay Sanctuary Scenic Trail {MBSST} Network Master Plan) proposes to construct 4.7 miles of the MBSST’s rail spine between 17th Avenue in the unincorporated area of Santa Cruz County known as Live Oak through Jade Street Park in the City of Capitola, then down the coast to State Park Drive.

The goals of this project are to increase the proportion of trips accomplished by biking and walking, improve safety and mobility of non-motorized users, and to provide high-quality connections to schools, parks, and community facilities. When constructed, this project will be a part of a proposed 32-mile Coastal Rail Trail network that parallels the entire coastline of Santa Cruz County.

Segment 10 is particularly challenging due to right-of-way constraints requiring realignment of sections of the railroad track bed. The project includes a 200-foot span pre-engineered bicycle and pedestrian bridge over Rodeo Gulch Creek on the inland side of the rail trestle bridge.

Segment 11 is particularly challenging due to extreme topography, including bridge structures at Soquel Creek, New Brighton State Beach, and Borregas Creek.



## Project Highlights

- ▶ Provides a dedicated bicycle and pedestrian trail, improving safety and connectivity to schools and commercial centers
- ▶ Includes three new bicycle and pedestrian bridges
- ▶ Over 49,000 residents live within one mile of the corridor
- ▶ 14 schools, 26 parks, and New Brighton and Seacliff State Beaches are within one mile of the corridor
- ▶ Enhances mobility and transportation for disadvantaged communities

## Project Delivery Strategy

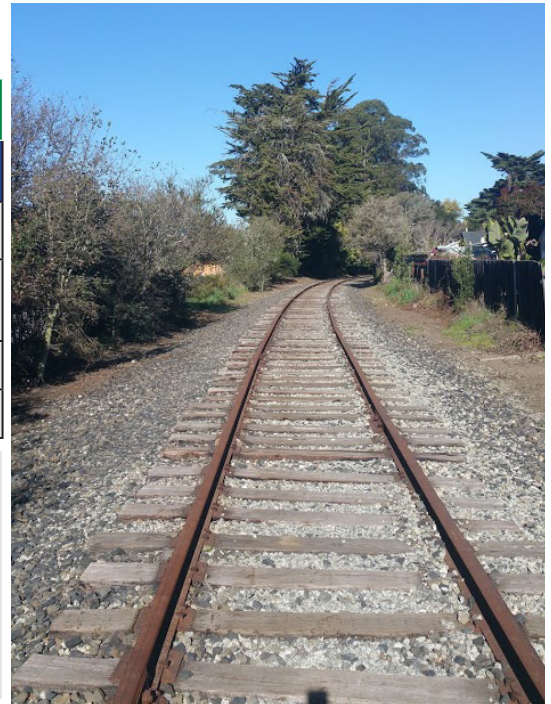
The County is advancing the environmental and design phases of the project. The project is funded through a combination of Measure D-Regional Active Transportation Funds and State Active Transportation Program funds, with the exception of the stretch of trail that crosses Soquel Creek. The section of trail over Soquel Creek and involving the Capitola Trestle, as described in the Ultimate Trail Configuration, is being developed as part of RTC’s Electric Rail Transit Project.



# Active Transportation: Coastal Rail Trail Segments 10 & 11

## Total Programming

<b>Estimated Total Project Cost</b>	<b>\$111.7M</b>
<b>Funding Sources</b>	
Measure D (Active Transportation)	\$17.4M
State Active Transportation Program	\$67.6M
Total Funding	\$85M
Need	\$27M



## Project Schedule

The project's environmental phase began in 2021, and was completed in Spring 2024. The final design phase is expected to be completed in 2025. The project is scheduled to go to construction in 2026.



Preliminary project rendering